



Southeast LRT Information Session

www.edmonton.ca/LRTProjects

Welcome

Whyte Avenue to Mill Woods

November 25, 2010

CH2MHILL

THE CITY OF
Edmonton



Tonight's Meeting Purpose

www.edmonton.ca/LRTProjects

- Present Recommended Concept Plan
 - alignment
 - station locations
 - neighborhood access
 - noise study results
- Build on what we heard in September
- Recommendation is going forward for Committee of Council (TPW) consideration at non-statutory public hearing on December 8



Proposed Agenda

www.edmonton.ca/LRTProjects

- Welcome and Introductions
- Project Background
- Overall Southeast LRT Recommended Alignment
- Segment walkthrough of alignment, stations, and neighborhood access
- Noise Study Results
- Question and Answer



Southeast LRT Information Session
Whyte Avenue to Mill Woods

www.edmonton.ca/LRTProjects

Project Background

CH2MHILL

THE CITY OF
Edmonton

Council Approvals

www.edmonton.ca/LRTProjects

Council Approvals to Date

- LRT Network Plan *(June, 2009)*
- Southeast and West LRT Corridor *(December, 2009)*
- Downtown Corridor *(June, 2010)*

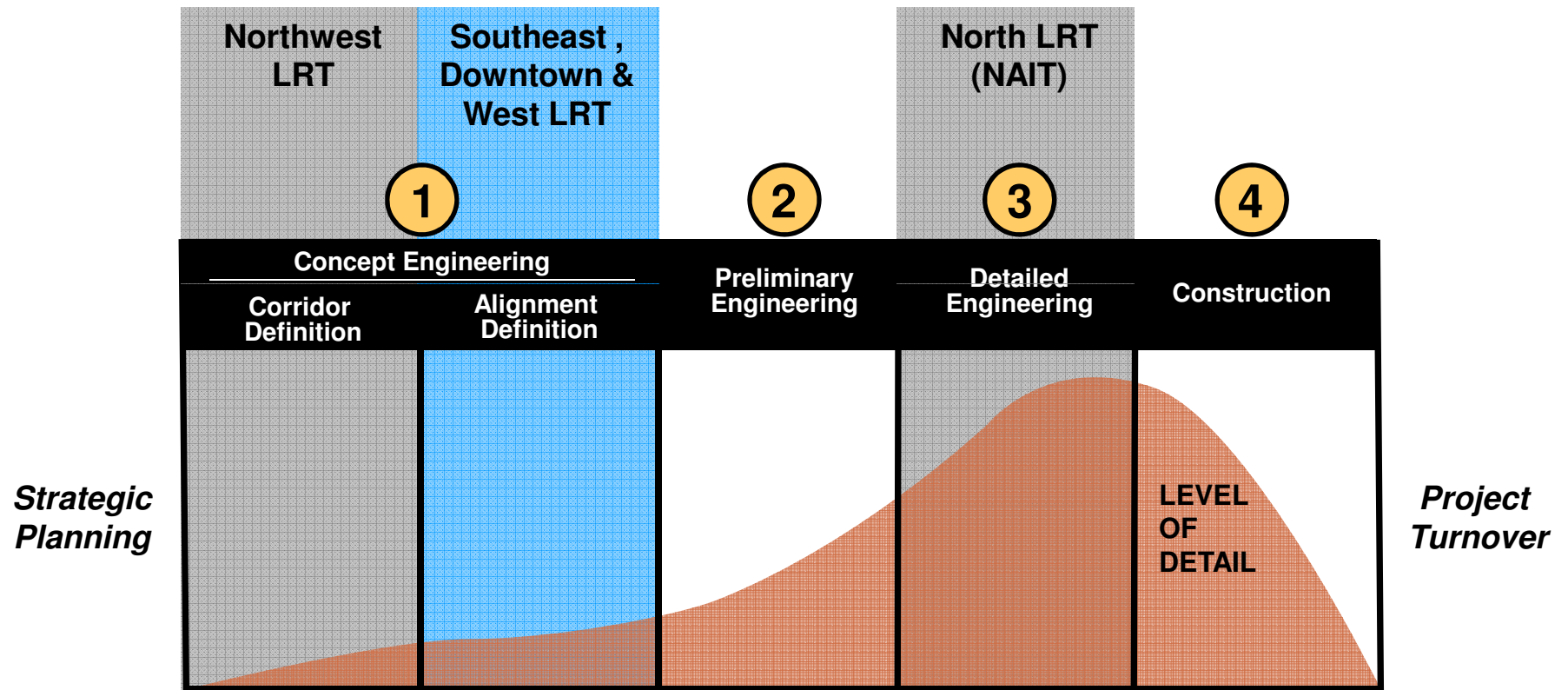


Upcoming Council Considerations

- Concept Plan Review *(December 8, 2010)*
- Council Concept Plan Consideration *(January 19, 2011)*

LRT Development

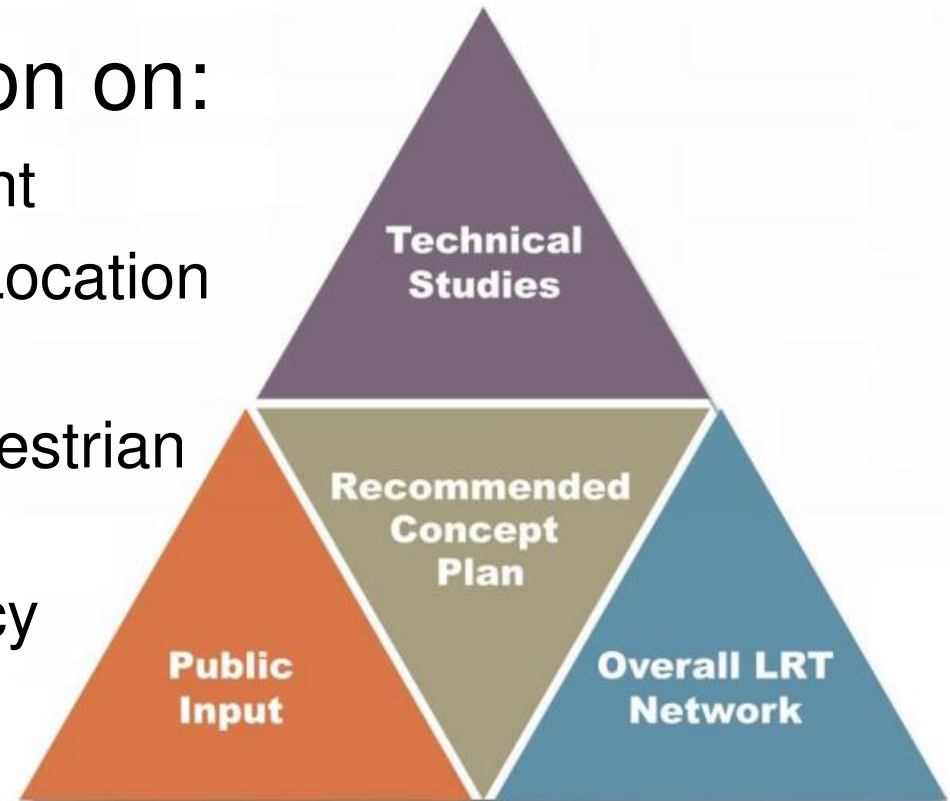
www.edmonton.ca/LRTProjects



Where we are in the process today

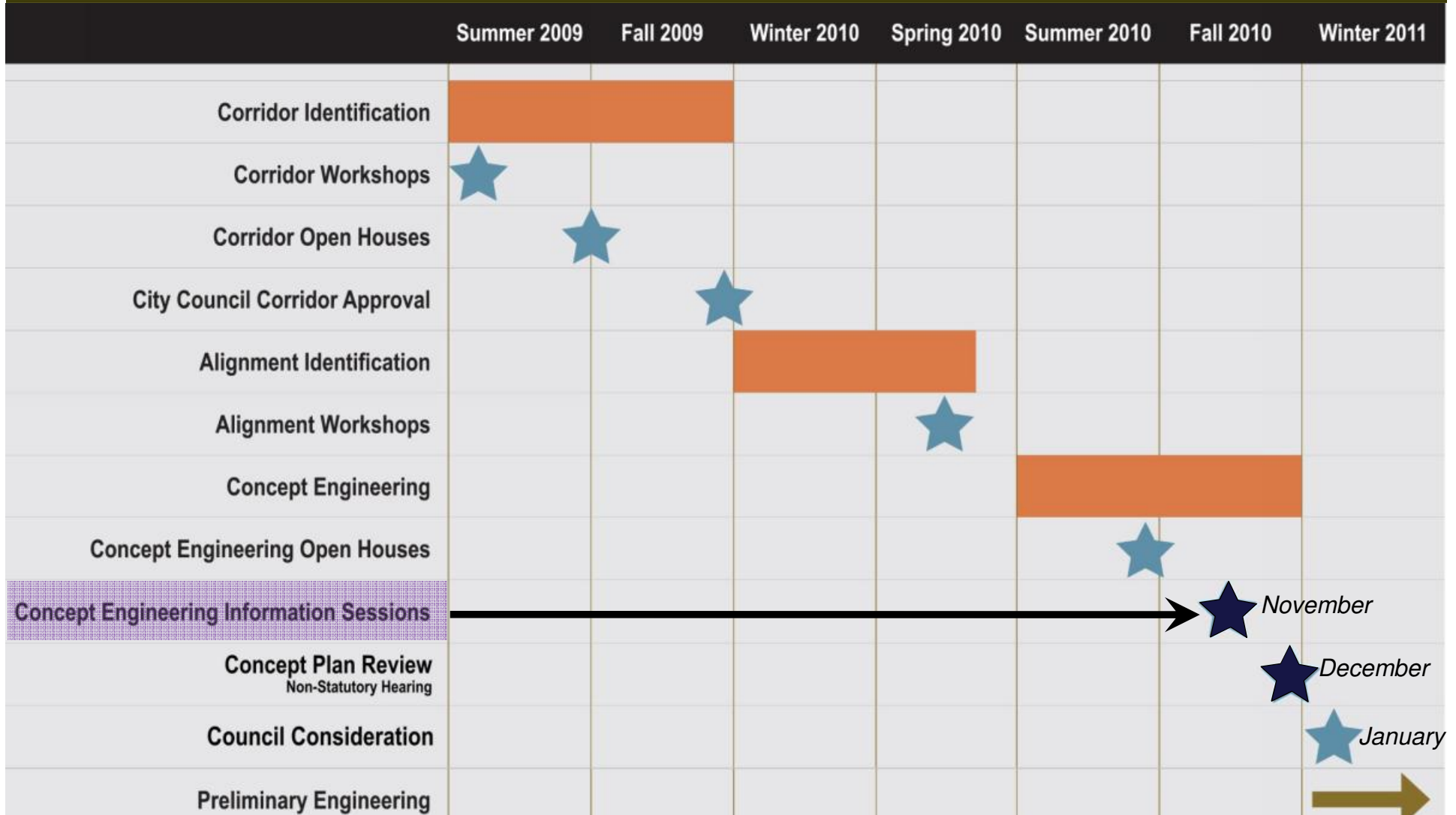
www.edmonton.ca/LRTProjects

- Presenting information on:
 - Recommended Alignment
 - Recommended Station Location and Configuration
 - Neighbourhood and Pedestrian Access
 - Urban Traffic Noise Policy and Noise Study Results



Where We Are Going

www.edmonton.ca/LRTProjects



LRT Network

www.edmonton.ca/LRTProjects



Urban Style LRT

www.edmonton.ca/LRTProjects



Charlotte, North Carolina
Willamor Media flicker



San Jose, CA
© 2005 Peter Ehrlich



New Jersey, NY
Paul David Gerber



Croydon, UK
Andrew Grantham, FLicker

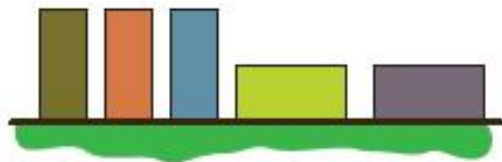


Station Typologies

www.edmonton.ca/LRTProjects



Mixed Use / Town Centre Stations



Employment Centre Stations

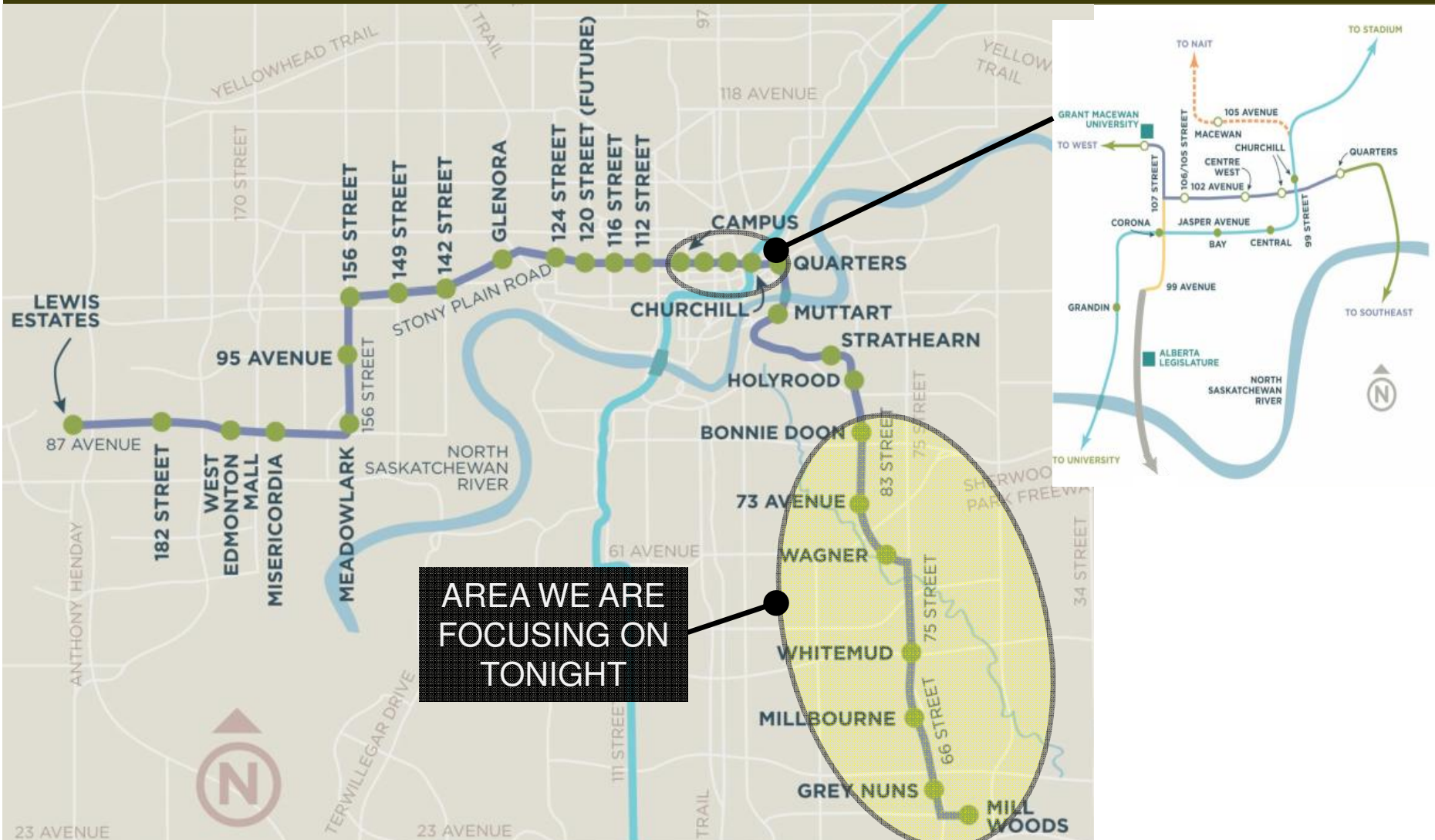


Residential Centre Stations



Southeast and West LRT Corridors

www.edmonton.ca/LRTProjects





Southeast LRT Information Session
Whyte Avenue to Mill Woods

www.edmonton.ca/LRTProjects

Public Involvement Process & Update

CH2MHILL

THE CITY OF
Edmonton



Process

www.edmonton.ca/LRTProjects

Review and Evaluate Options

- Community/neighbourhood-based workshops
- Stakeholder meetings and presentations

May/June 2010

Present Draft Concept Plan for Feedback

- Open Houses with questionnaire

September 2010

Info Sessions with Recommended Plan

November 2010

Public Hearing/Council

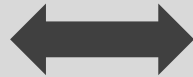
December 2010

What We Heard

www.edmonton.ca/LRTProjects

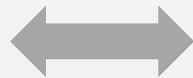
Competing Themes:

ensure easy
access into
neighborhoods



reducing
travel lanes

station location



intersection
operations

pedestrian access
across the
roadways



vehicle
travel times

neighborhood
access



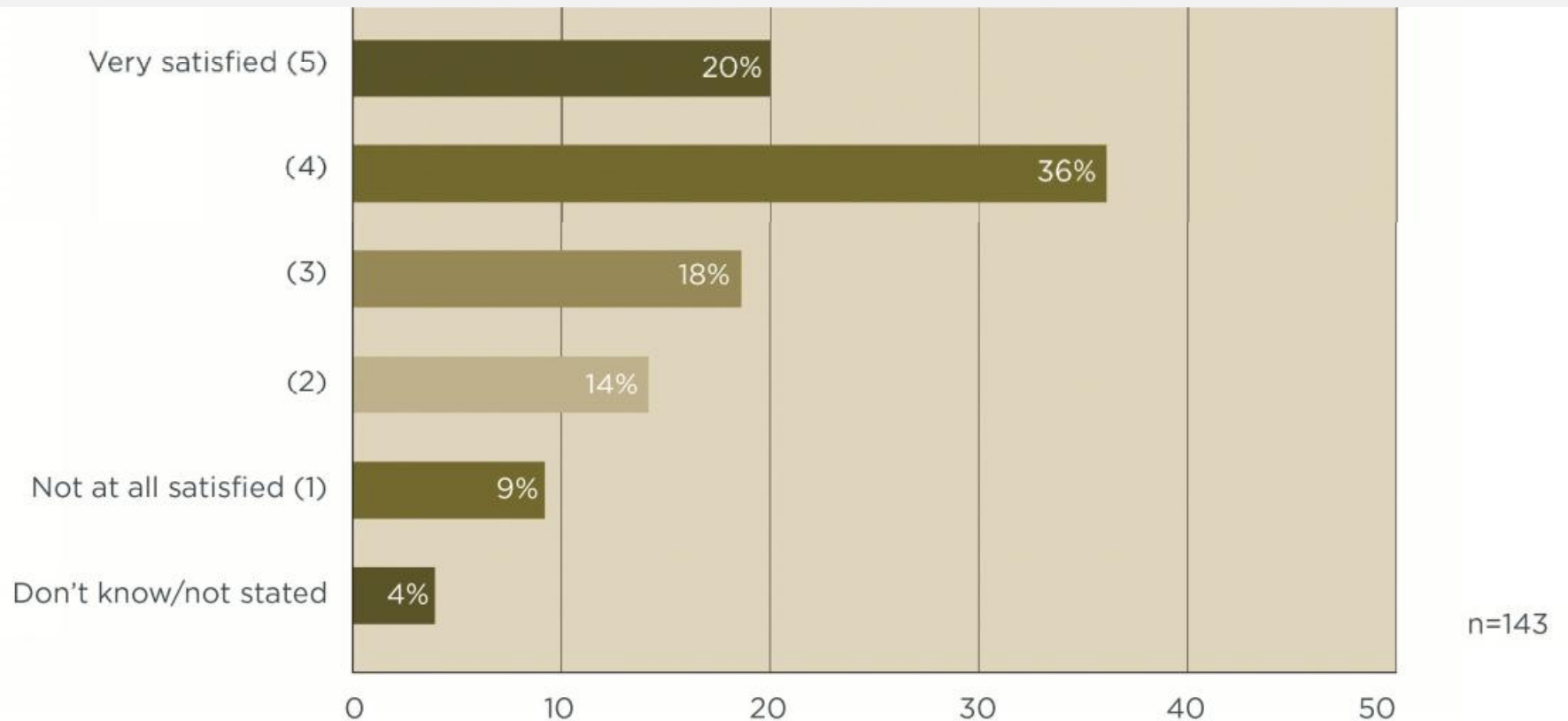
neighborhood
short-cutting



Concept Plan Satisfaction

www.edmonton.ca/LRTProjects

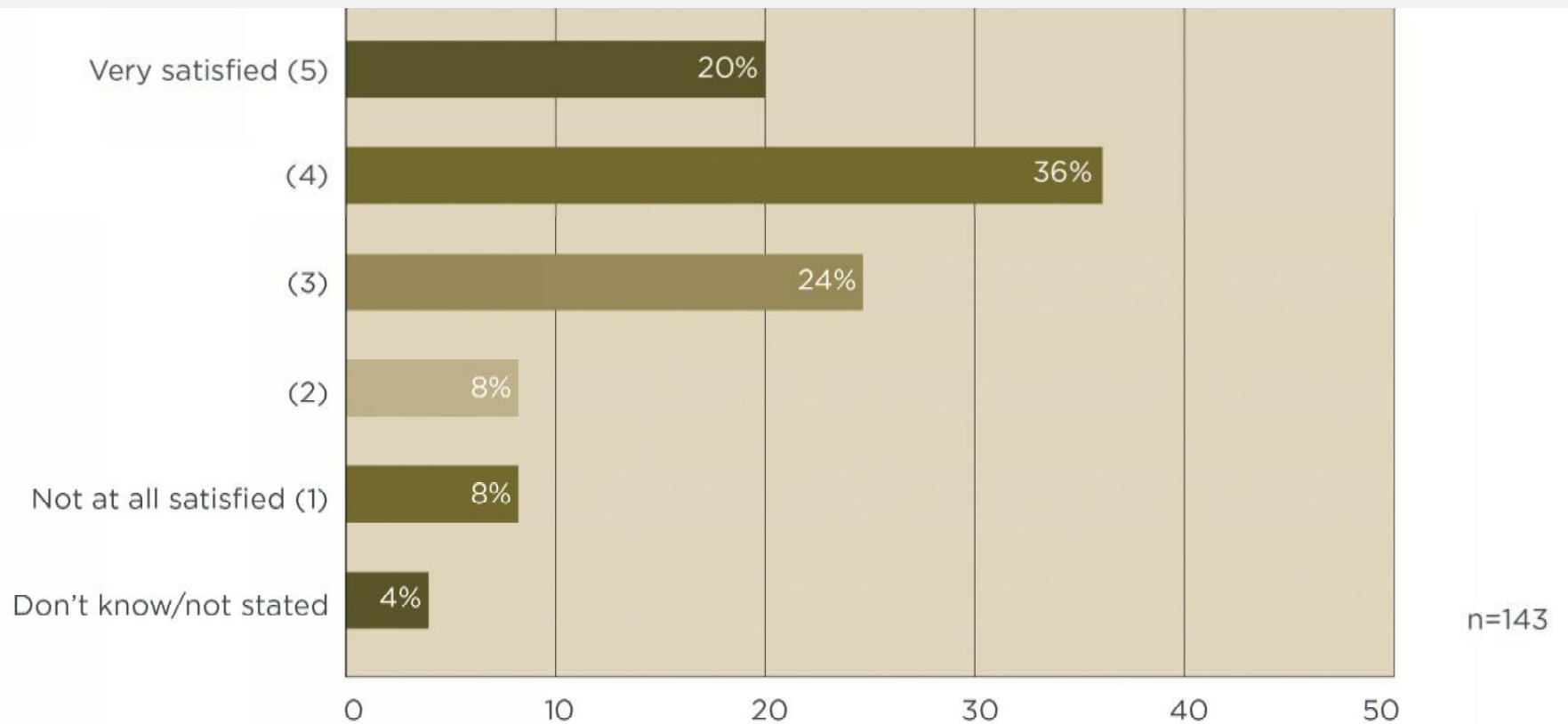
How satisfied were you with the Draft LRT Concept Plan?



LRT Alignment

www.edmonton.ca/LRTProjects

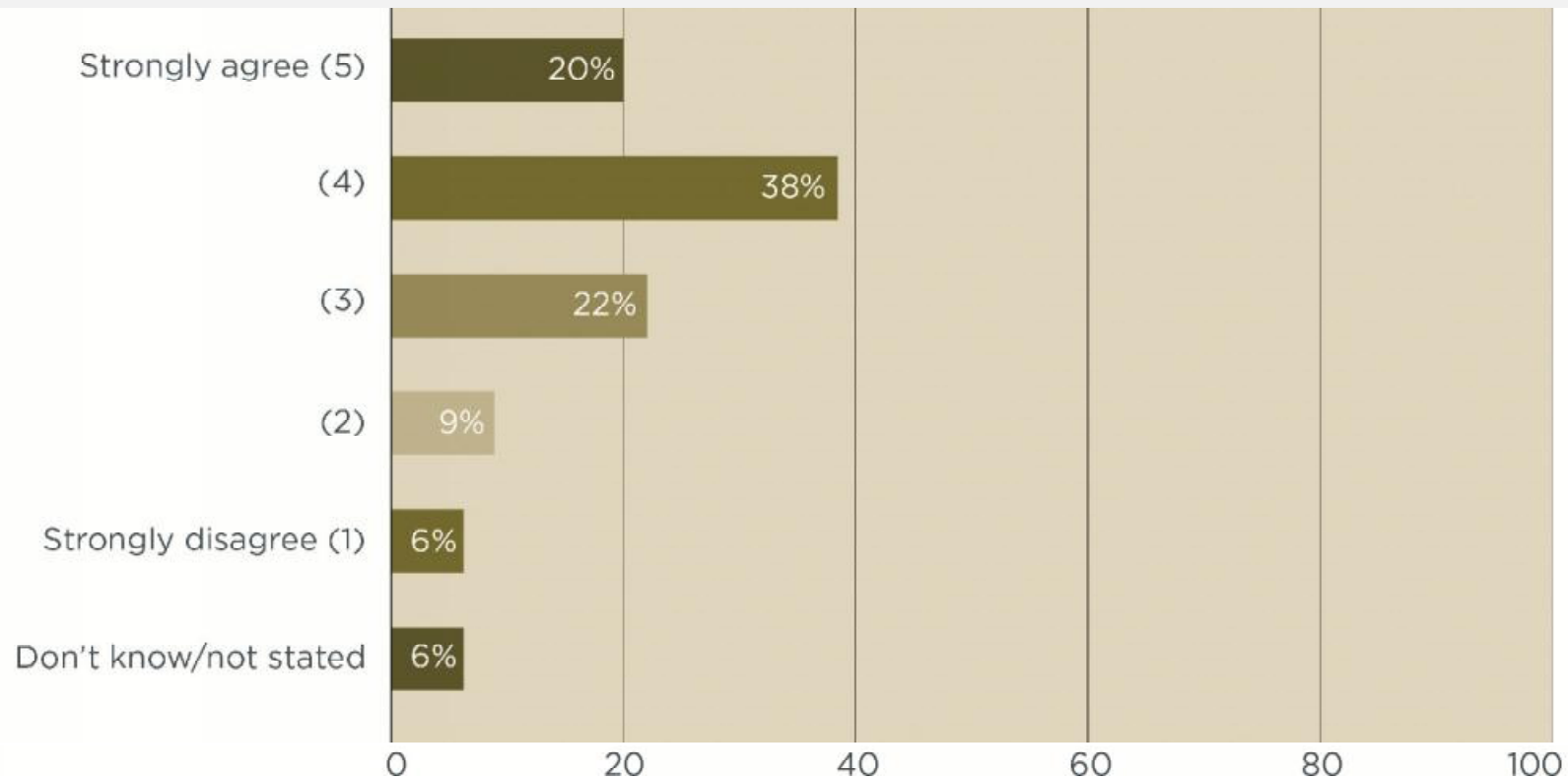
How satisfied are you with the proposed track location within the LRT Corridor?



Station Locations

www.edmonton.ca/LRTProjects

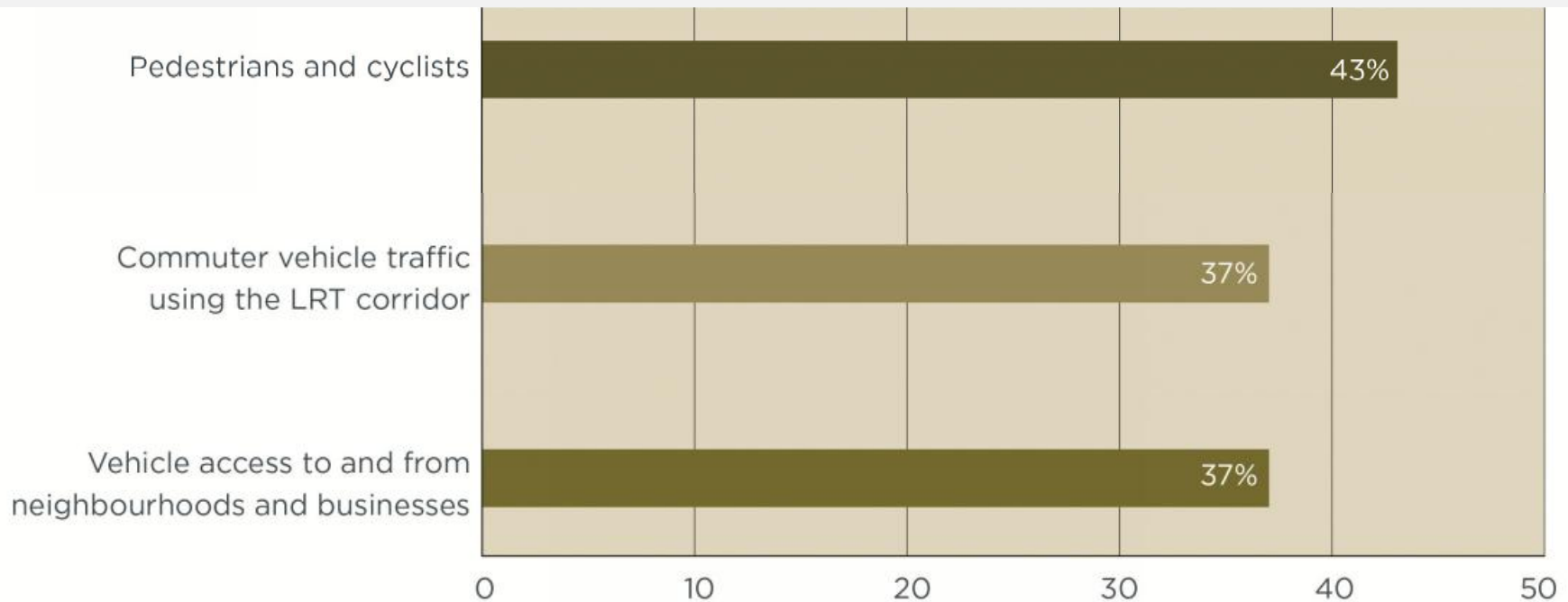
Agreement that the proposed LRT station locations will provide convenient access to important destinations?



Access

www.edmonton.ca/LRTProjects

Satisfaction with efforts to accommodate the following user groups





Southeast LRT Information Session

Whyte Avenue to Mill Woods

www.edmonton.ca/LRTProjects

Recommended Alignment





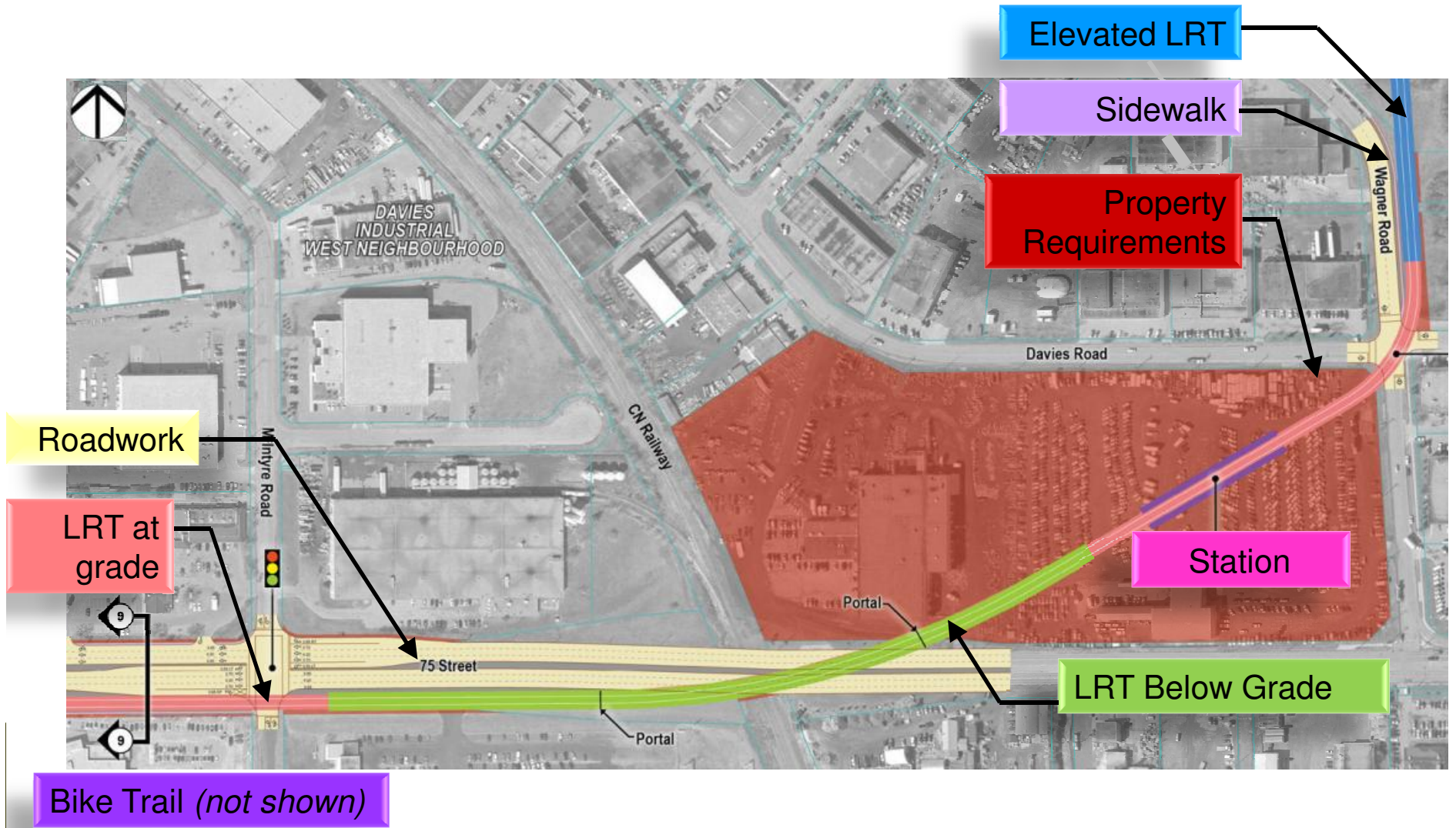
Highlighted Changes Since September

www.edmonton.ca/LRTProjects

- The Jasper Avenue/95 Street intersection reconfigured as 4 legged intersection
- Right in - right out access at 88 Street/95 Avenue intersection
- New connection for the emergency service building to intersection at Bonnie Doon traffic circle
- Reduced property requirements around 69A Avenue
- Wagner Road alignment
- Bus access ramps to future transit centre at Whitemud Drive
- New signalized intersection on 66 Street, north of 28 Avenue
- Mill Woods LRT Station and Transit Centre location

Legend / Key

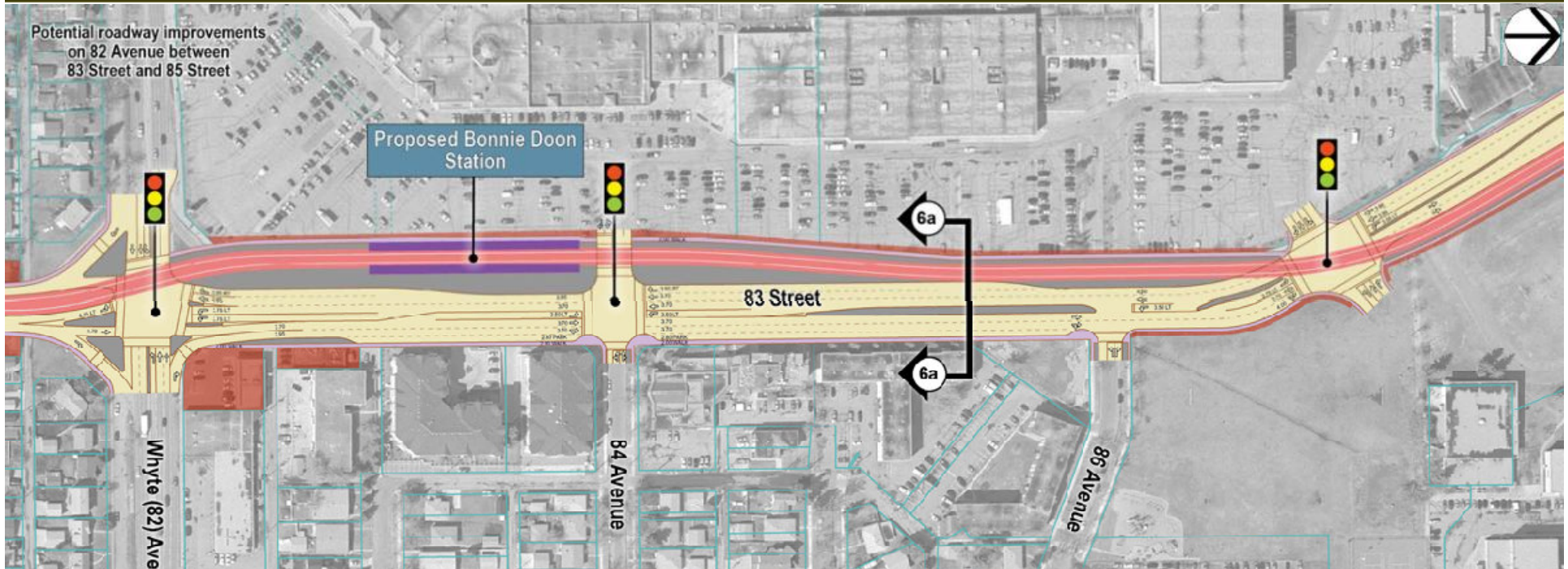
www.edmonton.ca/LRTProjects



Alignment / Stations – Bonnie Doon

www.edmonton.ca/LRTProjects

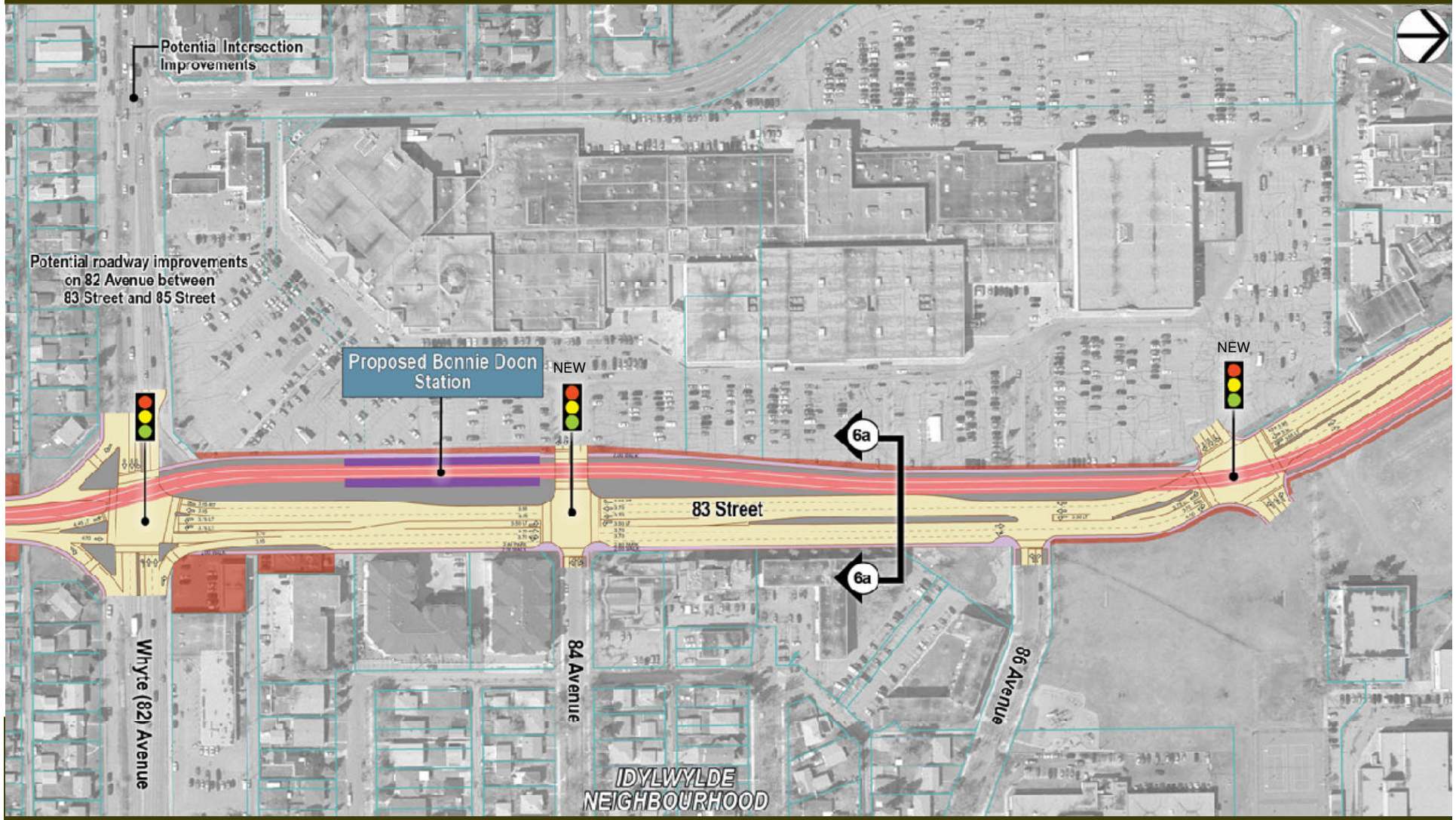
subject to change



Access – Bonnie Doon

www.edmonton.ca/LRTProjects

subject to change



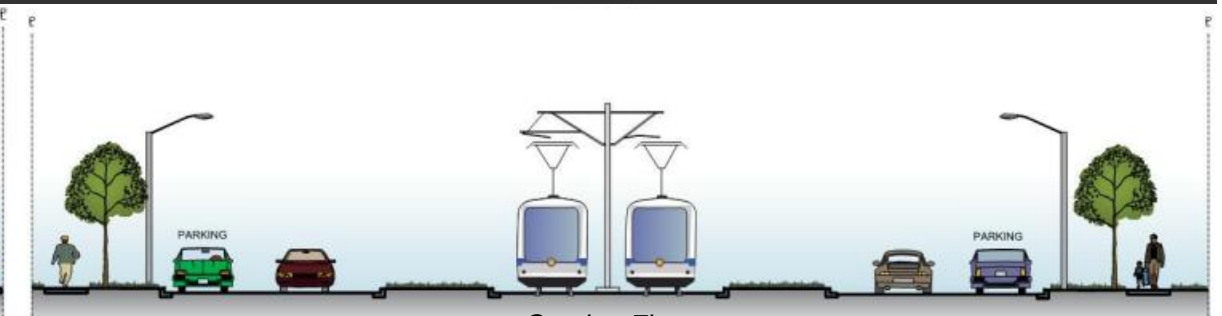
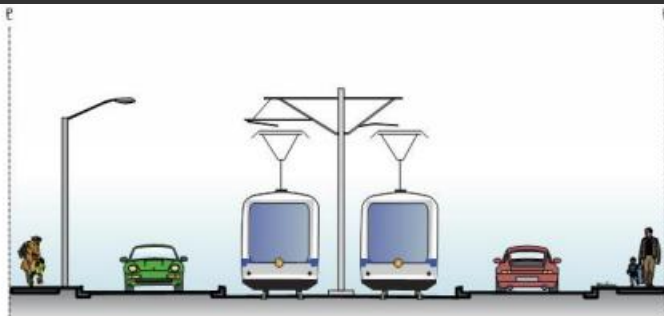
Alignment / Stations – Avonmore / King Edward Park

www.edmonton.ca/LRTProjects

subject to change



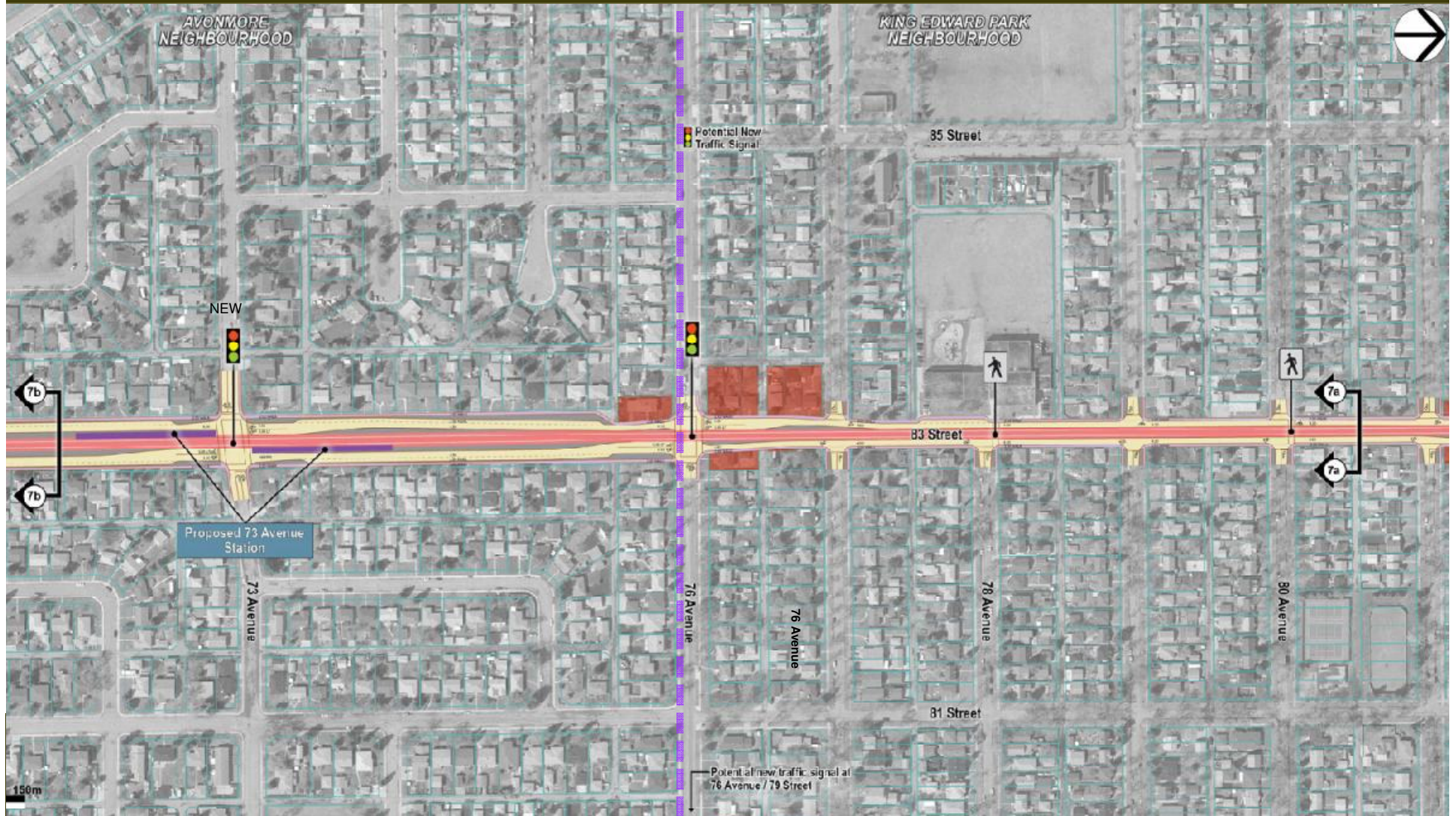
Centre Running LRT



Access – Avonmore / King Edward Park

www.edmonton.ca/LRTProjects

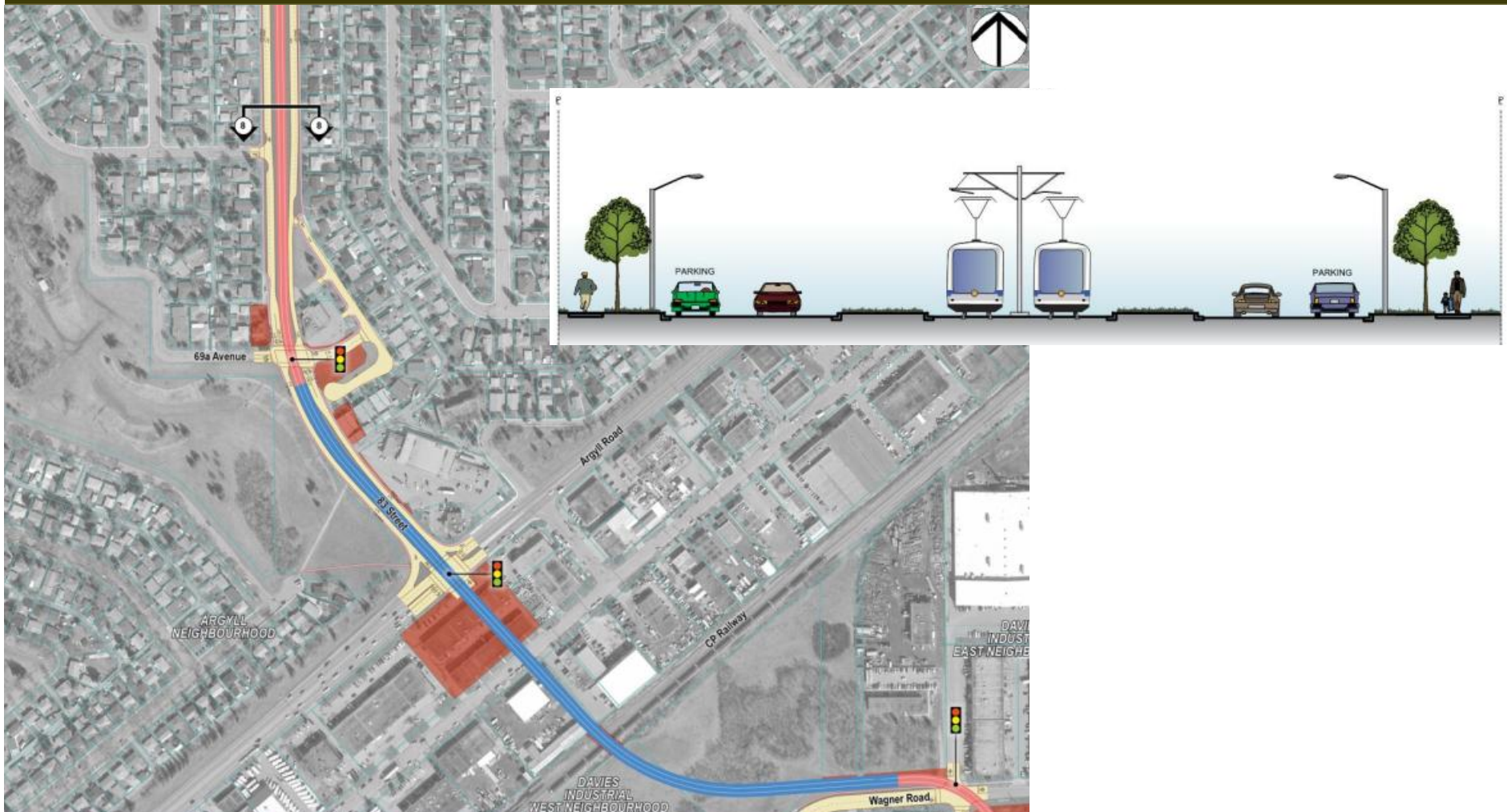
subject to change



Alignment / Stations – Argyll

www.edmonton.ca/LRTProjects

subject to change



Centre Running LRT



Elevated LRT

www.edmonton.ca/LRTProjects



Access – Argyll

www.edmonton.ca/LRTProjects

subject to change



Alignment / Stations – Wagner

www.edmonton.ca/LRTProjects

subject to change



LRT Below Grade

Access – Wagner

www.edmonton.ca/LRTProjects

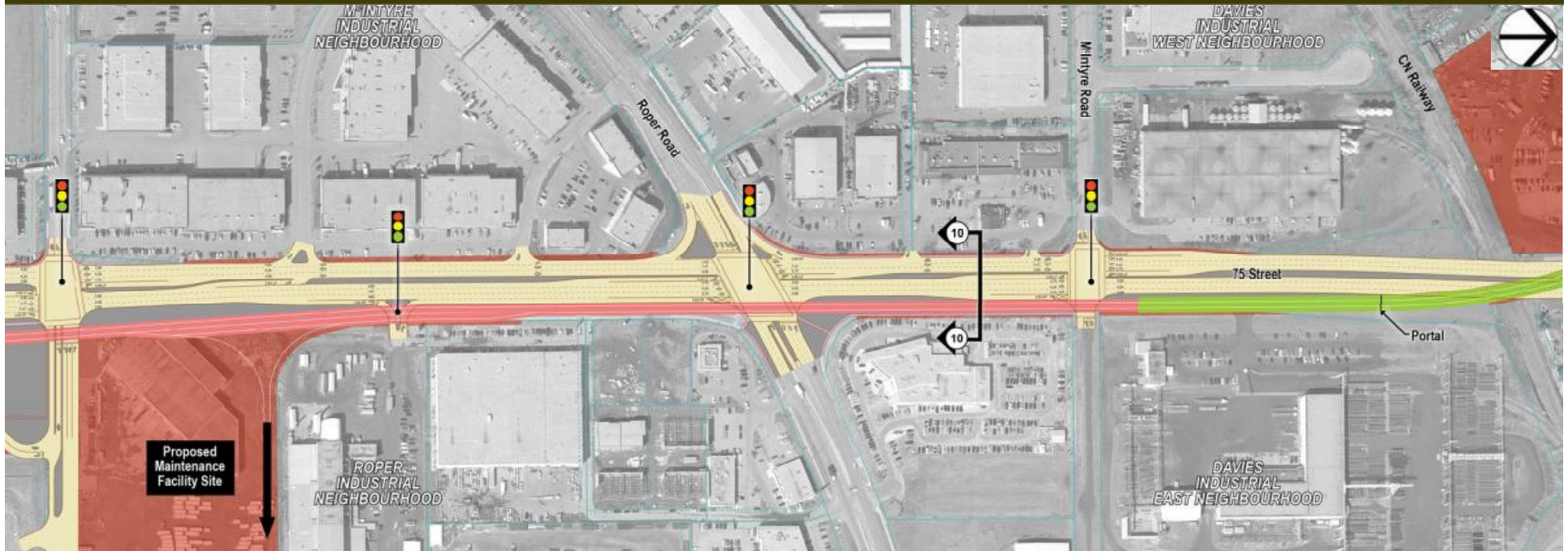
subject to change



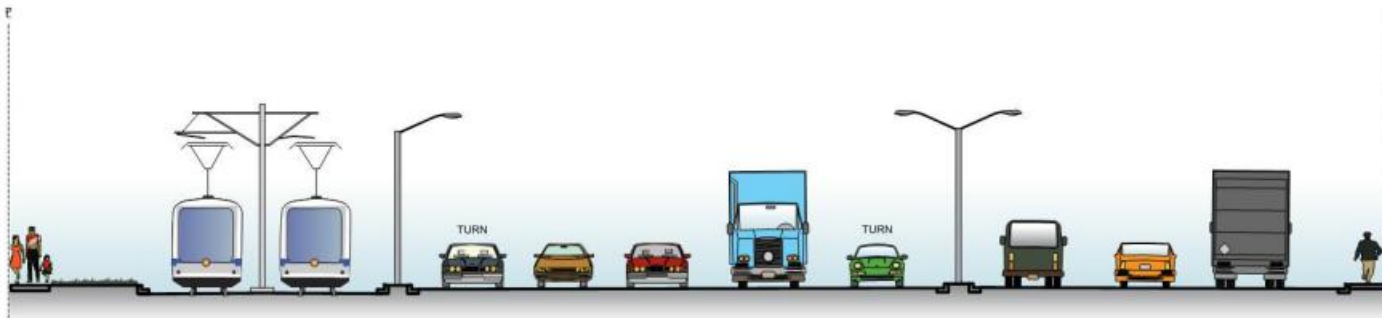
Alignment / Stations – 75 Street

www.edmonton.ca/LRTProjects

subject to change



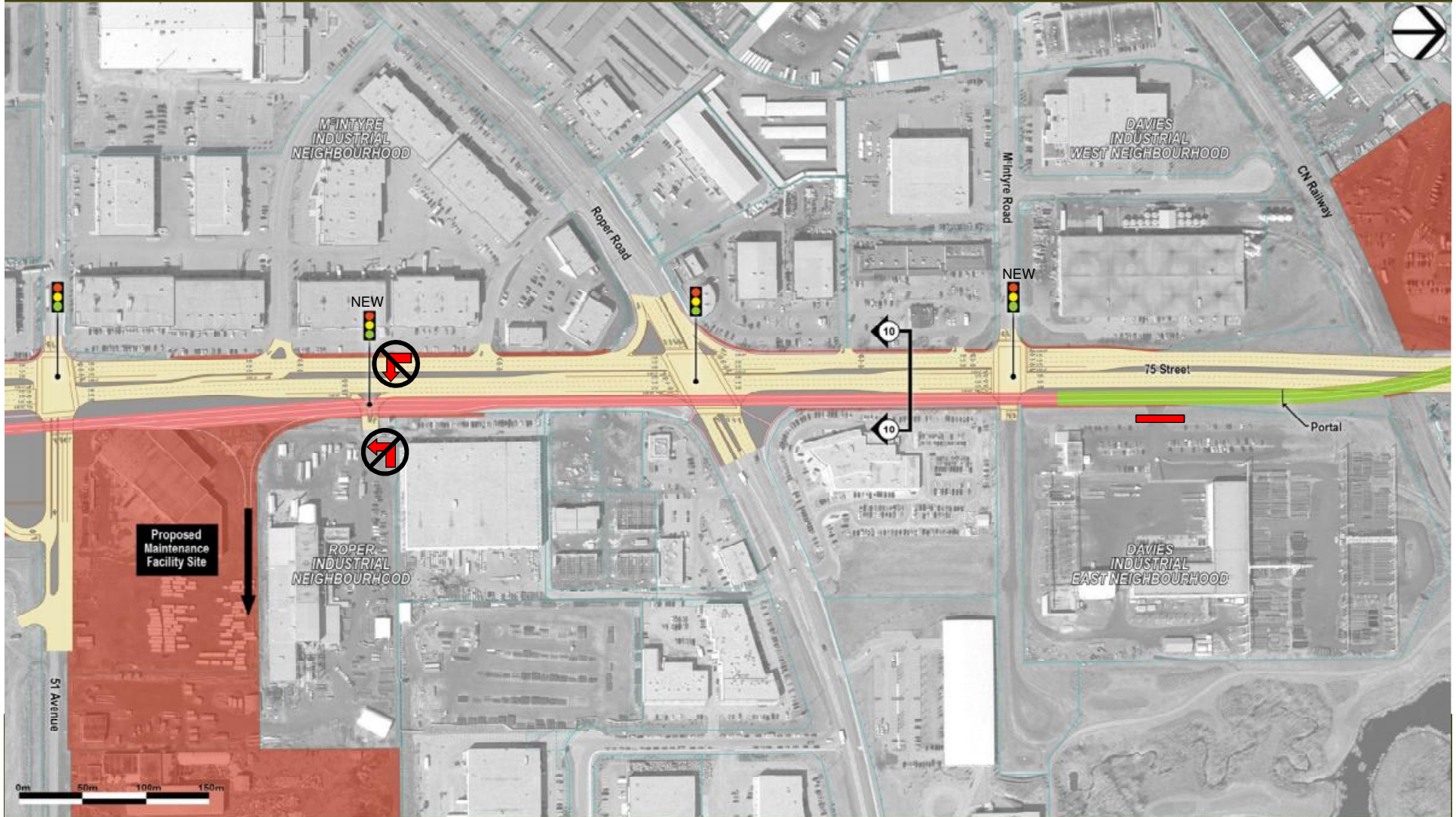
East Running LRT



Access – 75 Street

www.edmonton.ca/LRTProjects

subject to change



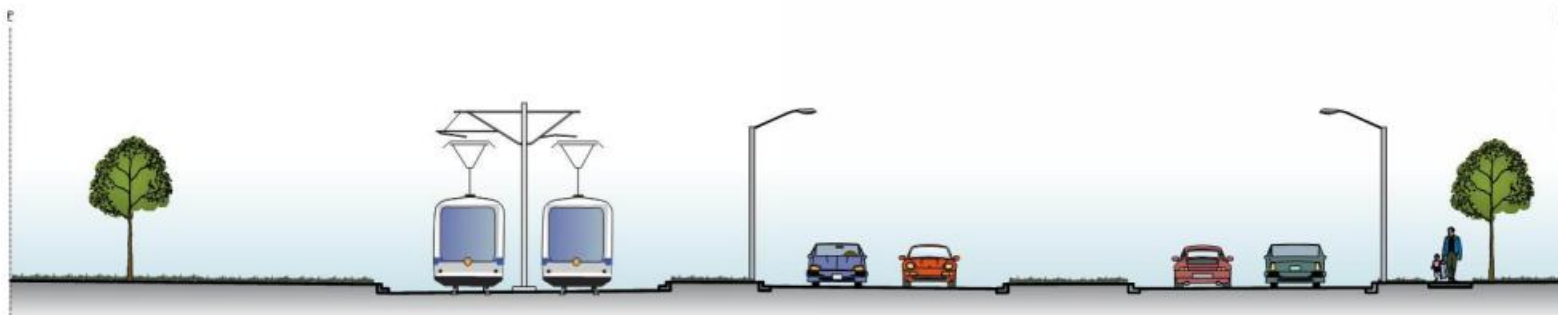
Alignment / Stations – Whitemud

www.edmonton.ca/LRTProjects

subject to change



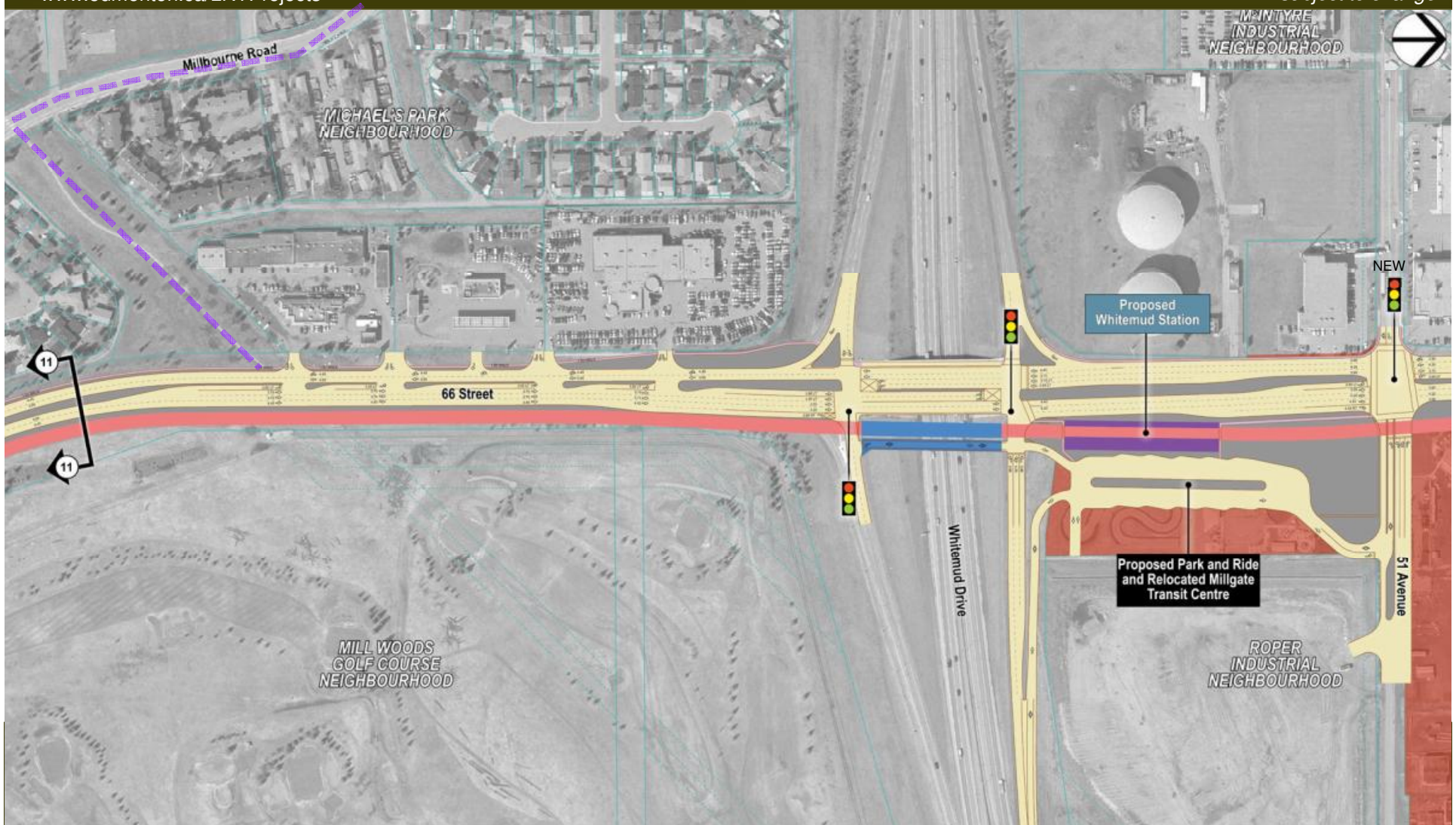
East Running LRT



Access – Whitemud

www.edmonton.ca/LRTProjects

subject to change



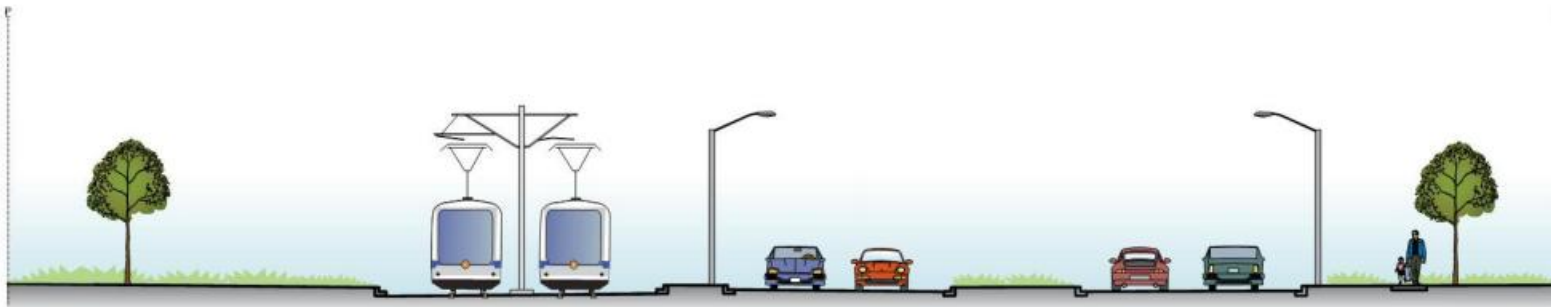
Alignment / Stations – 66 Street

www.edmonton.ca/LRTProjects

subject to change



East Running LRT



Access – 66 Street

www.edmonton.ca/LRTProjects

subject to change



Alignment / Stations – Grey Nuns

www.edmonton.ca/LRTProjects

subject to change



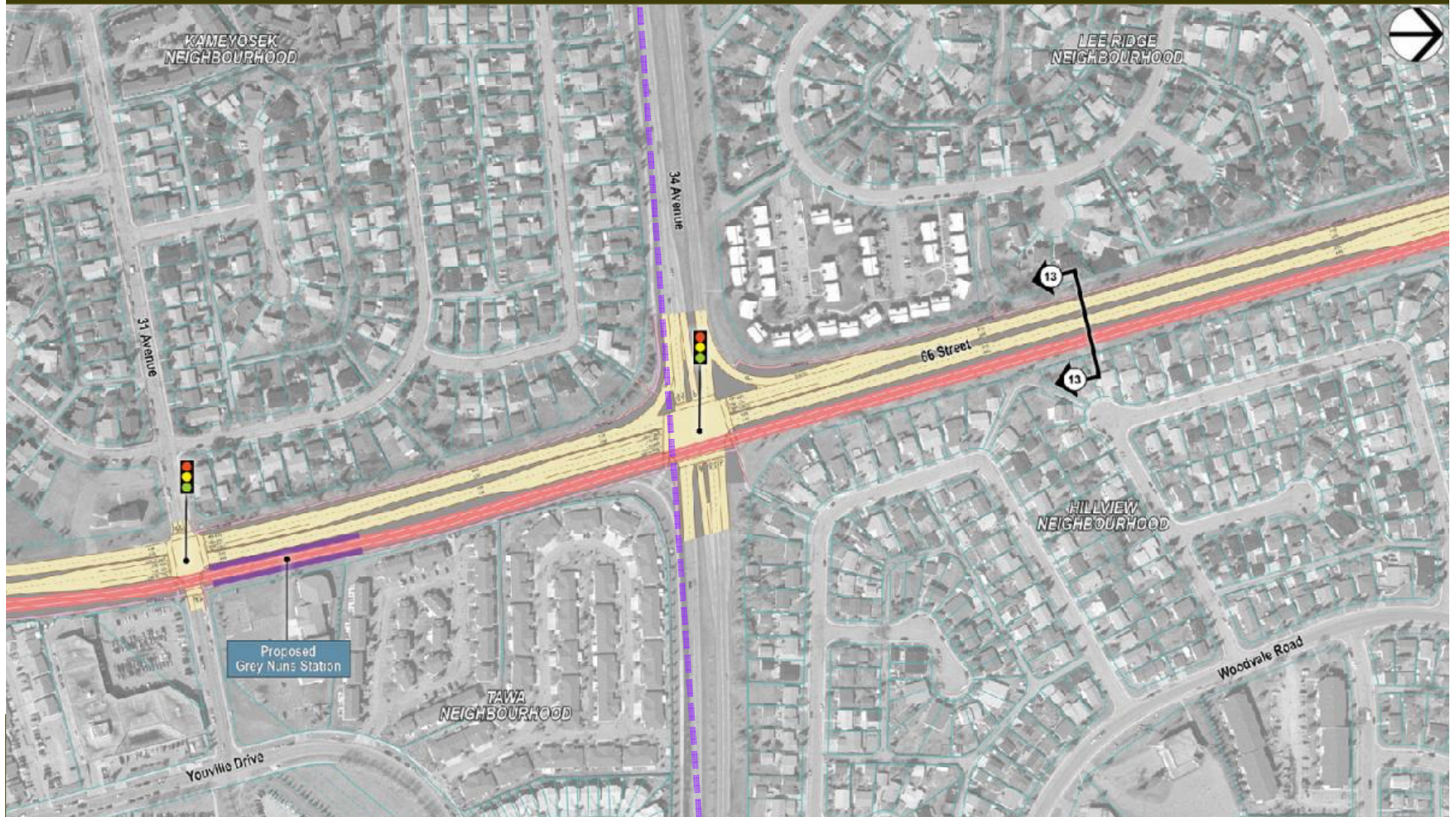
East Running LRT



Access – Grey Nuns

www.edmonton.ca/LRTProjects

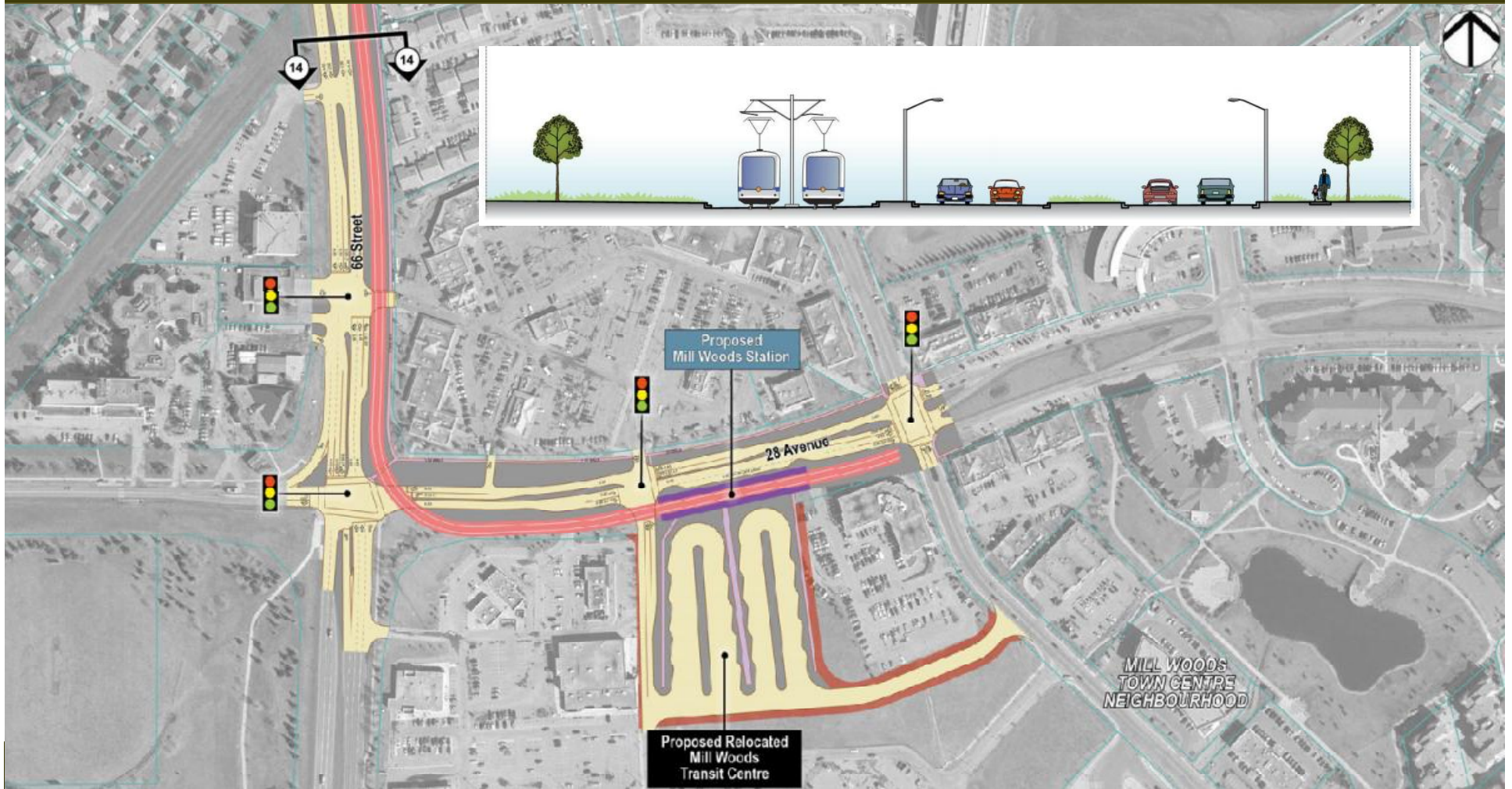
subject to change



Alignment / Stations – Mill Woods

www.edmonton.ca/LRTProjects

subject to change

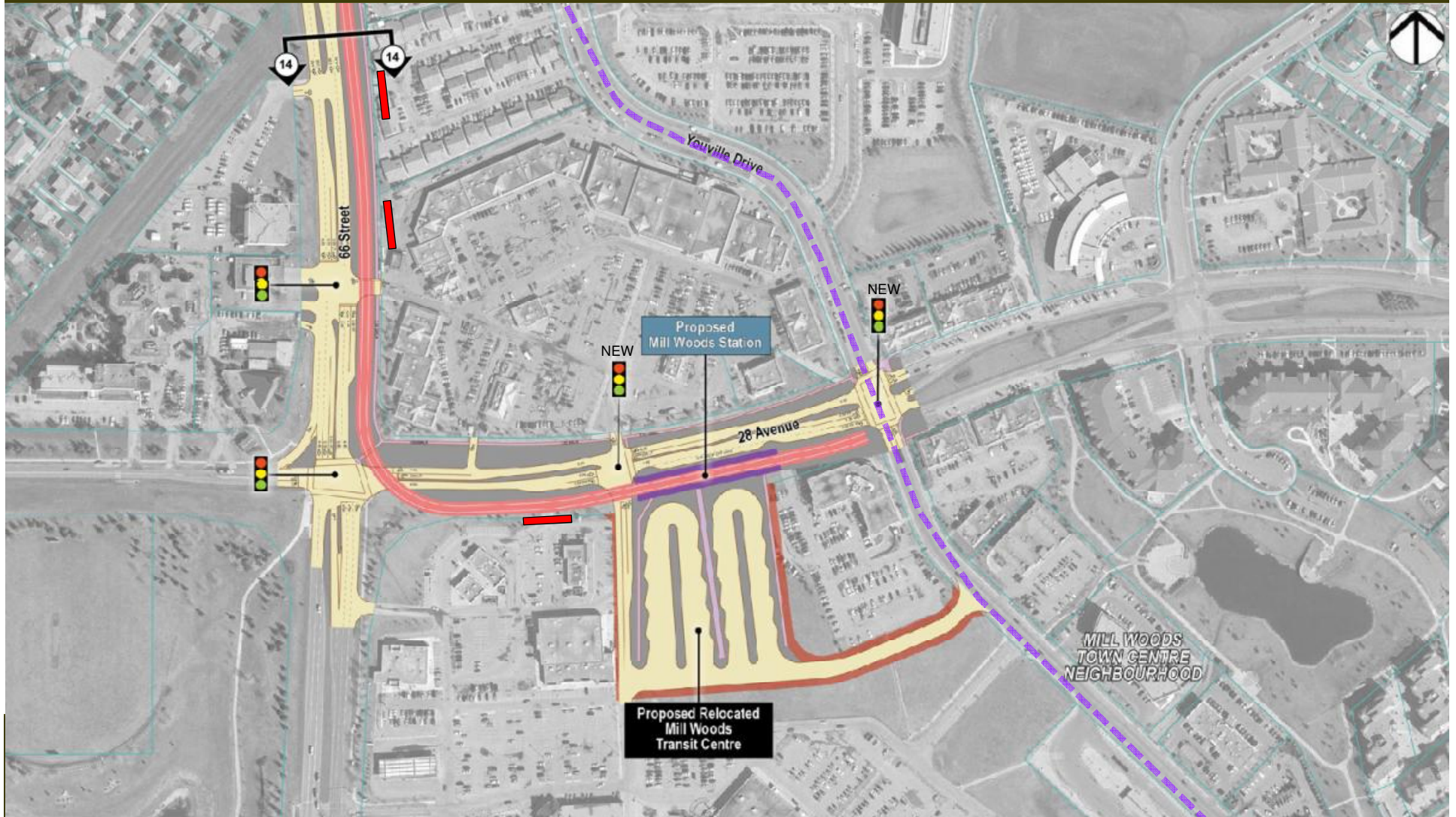


Side Running LRT

Access – Mill Woods

www.edmonton.ca/LRTProjects

subject to change





Southeast LRT Information Session
Whyte Avenue to Mill Woods

www.edmonton.ca/LRTProjects

Urban Traffic Noise Policy and Study Results

CH2MHILL

THE CITY OF
Edmonton



Urban Traffic Noise Policy (C506)

www.edmonton.ca/LRTProjects

- City policy determines if noise attenuation is to be built with LRT
- A noise model is built to project future traffic noise with LRT and future traffic growth (20+ years)
- Future traffic noise levels must exceed 65 dBA _{Leq24} to be considered for attenuation
- Noise attenuation needs through Capital or Retrofit projects

Urban Traffic Noise Policy (C506)

www.edmonton.ca/LRTProjects

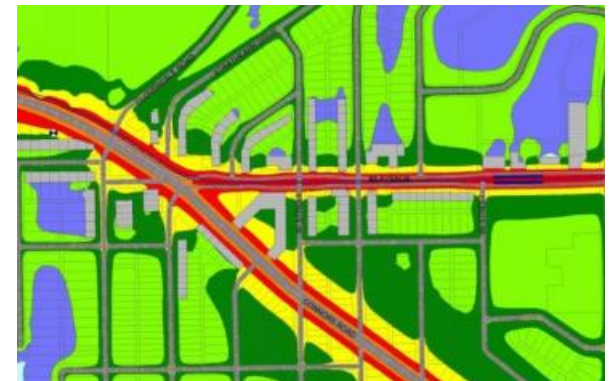
- Applies to backyard of adjacent properties (centre of backyard)
- Minimum 60% support by adjacent property owners
- Stakeholders are involved in the determining the appearance of the proposed treatment
- Noise attenuation must be technically, administratively and economically practical



How is Noise Modeling Done

www.edmonton.ca/LRTProjects

- Measure existing noise levels along corridor and develop model
- Projected 2041 volumes, proposed lane configuration and the addition of LRT
- Assess the projected noise levels against the UTNP





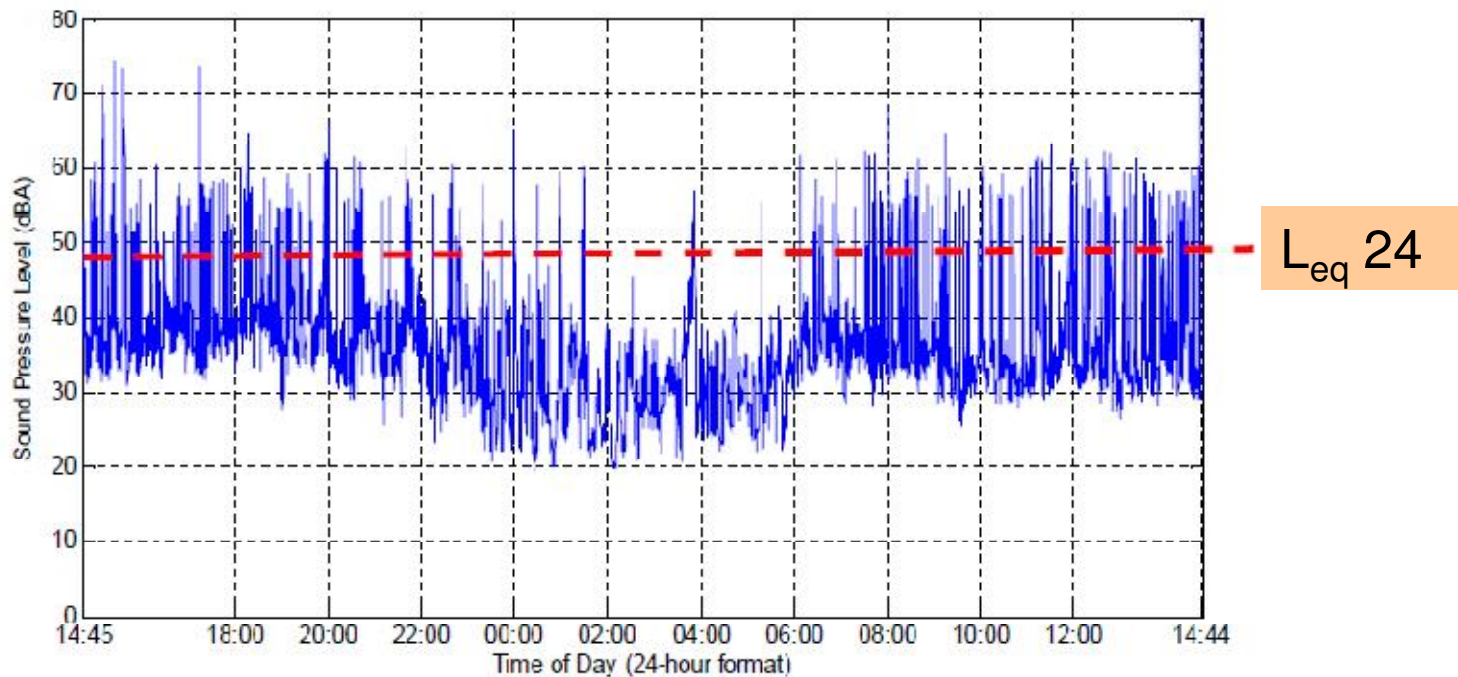
Energy Equivalent Level (L_{eq})

www.edmonton.ca/LRTProjects

- Accounts for the fluctuating levels
- Is sensitive to the peak sounds
- Is NOT the average sound level
- Is used in the majority of sound regulations (City of Edmonton UTNP)

Energy Equivalent Level (L_{eq})

www.edmonton.ca/LRTProjects





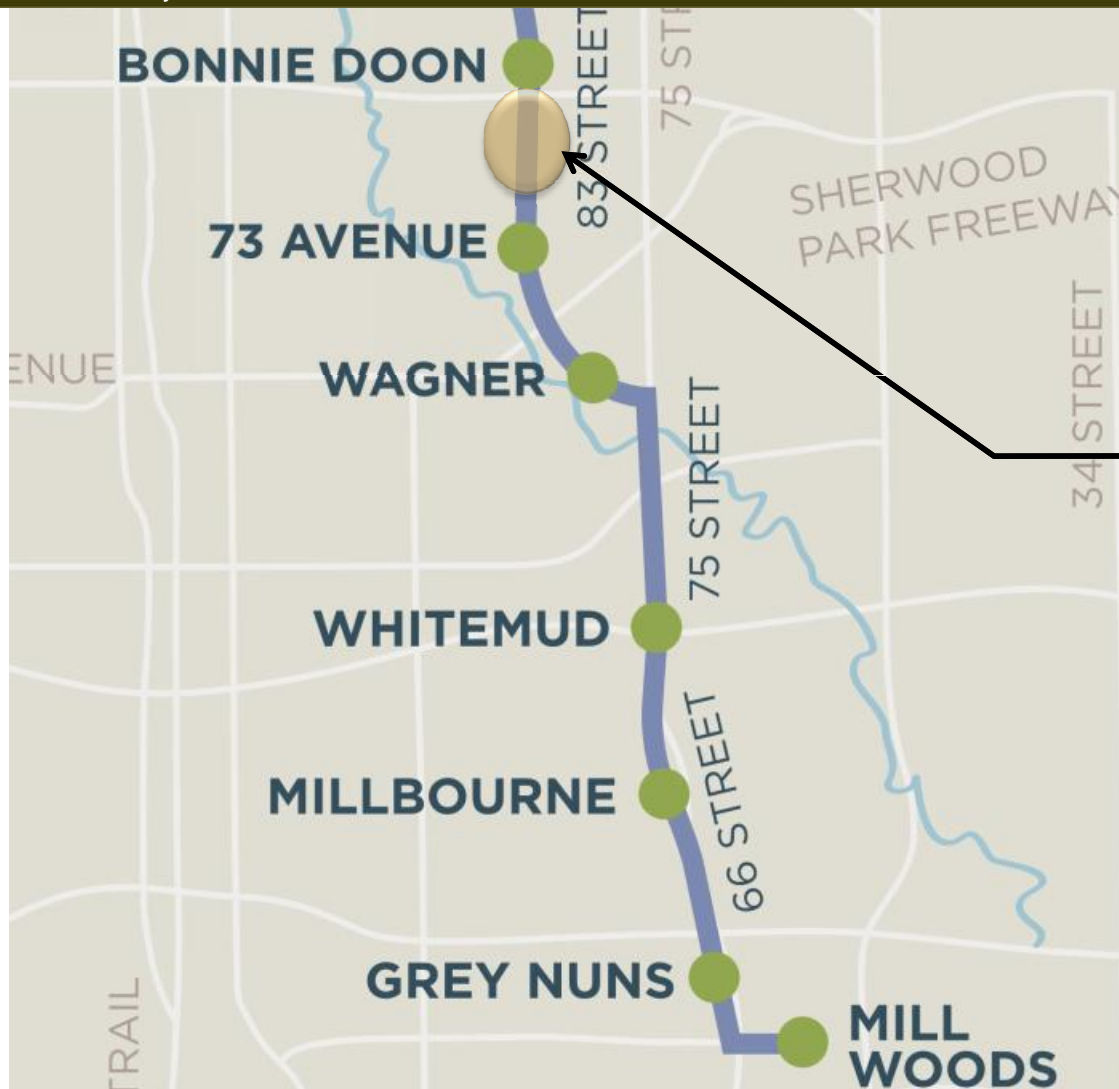
Noise Study Results

www.edmonton.ca/LRTProjects

- Sound levels ranging from 51.3 to above 65.0 dBA L_{eq24} (as measured in the rear outdoor amenity area)
- Noise climate was dominated by either local traffic on the main or adjacent roads
- Noise climate was generally broadband in nature, with no tonal components and no dominant stationary sources

Noise Study Results

www.edmonton.ca/LRTProjects



Area
exceeds
65 dBa_{Leq 24}
threshold
under the
UTNP



Southeast LRT Information Session

Whyte Avenue to Mill Woods

www.edmonton.ca/LRTProjects

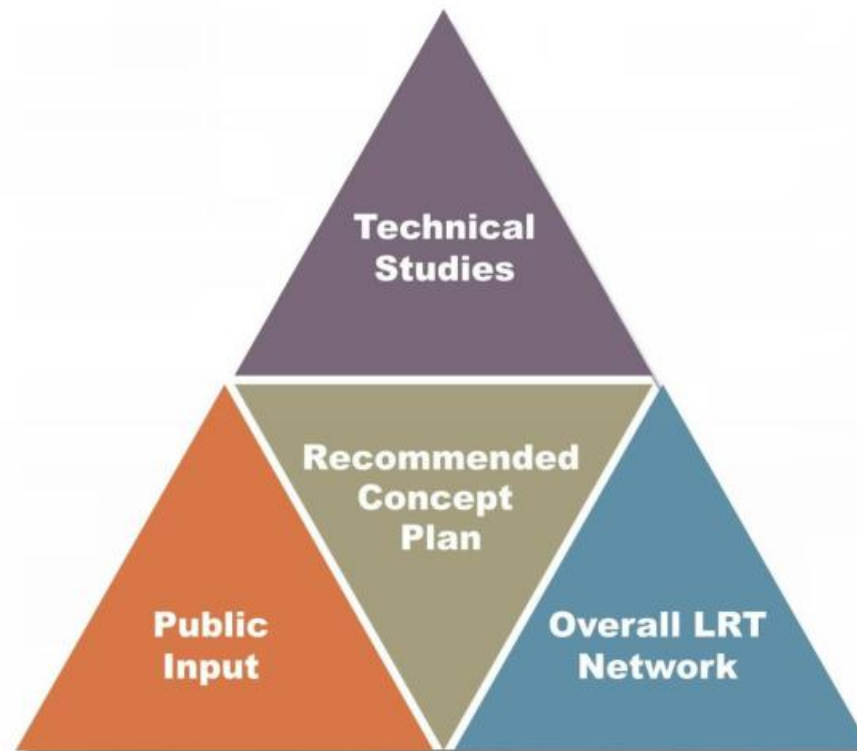
Next Steps

CH2MHILL

THE CITY OF
Edmonton

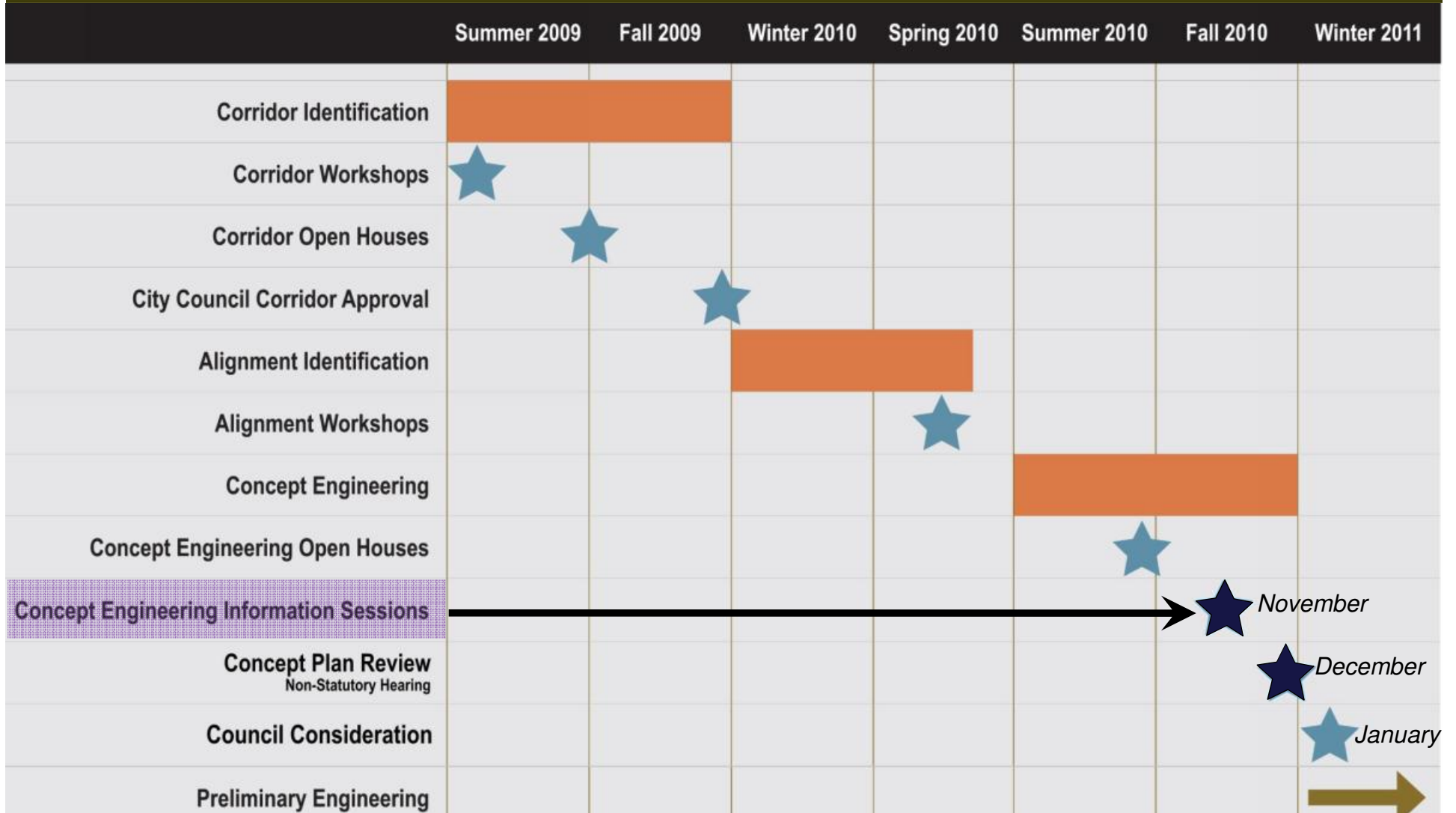
Overall Process

www.edmonton.ca/LRTProjects



Next Steps

www.edmonton.ca/LRTProjects



Ongoing Considerations

www.edmonton.ca/LRTProjects



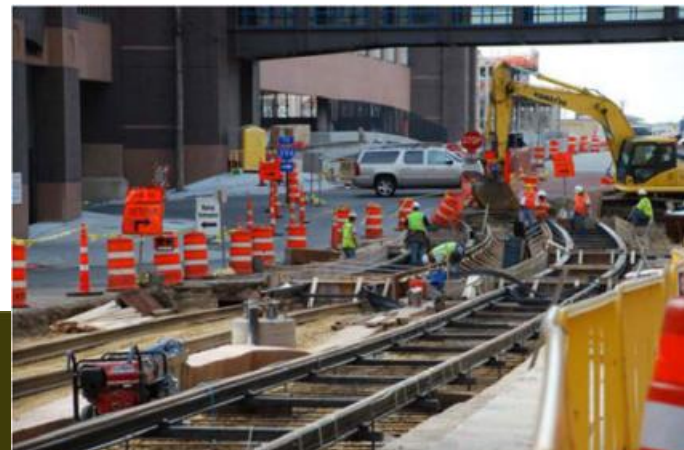
- Available parking programs
 - Commercial
(Bylaw 5590 signs, Private Parking Agency Enforcement)
 - Residential
(Residential Parking Programs, localized parking restrictions)
 - Additional engineering and study is required
- Safety/Security
- Traffic circulation within neighbourhoods
- Station Area Planning

Ongoing Considerations

www.edmonton.ca/LRTProjects



- Funding
- Traffic accommodation during construction
- Geotechnical / Environmental / Utilities
- Community/business impacts



CH2MHILL



Southeast LRT Information Session
Whyte Avenue to Mill Woods

www.edmonton.ca/LRTProjects

Question and Answer

Question and Answer Session “Ground Rules”

www.edmonton.ca/LRTProjects


- 2 minutes for each participant to ask a question or make a comment
- One follow-up question (1 minute)
- Will recognize 3 people for each round of questions; persons with microphones will go to those participants to ask their questions
- 3 rounds of questions
- Additional questions from same person not recognized until no new participants are wanting to ask questions
- Questions and responses will be recorded; please use microphones



Conclusion

www.edmonton.ca/LRTProjects

Presentation
available on
website:



The screenshot shows the City of Edmonton website interface. At the top, there is a search bar and navigation links. Below the header is a main navigation menu with categories like 'TRANSPORTATION'. The breadcrumb trail reads: Home > Transportation > Edmonton Transit System (ETS) > LRT (Light Rail Transit) > Future LRT > Southeast LRT to Mill Woods >. The main content area is titled 'Southeast LRT to Mill Woods' and features an illustration of a light rail train. To the left is a sidebar menu with categories: 'Transportation', 'Edmonton Transit System (ETS)', and 'LRT (Light Rail Transit)'. To the right are sections for 'Related Documents' and 'Related Links'. Below the 'What's New' section is a table of information sessions.

| Date and Community | Location | Time |
|--|---|-------|
| Wednesday, Nov 24 Downtown to Argyll | Four Points Sheraton 7230 Argyll road | 4-9pm |
| Thursday, Nov 25 Whyte Avenue to Mill Woods | MacEwan South Campus, Galleria 7319 29 Avenue | 4-9pm |

www.edmonton.ca/LRTProjects



Conclusion

www.edmonton.ca/LRTProjects

- Register to speak at Public Hearing

WEDNESDAY, DECEMBER 8, 2010

AT TRANSPORTATION AND PUBLIC WORKS COMMITTEE

- Register to speak on www.edmonton.ca/meetings or call the City Clerk's office at **780-496-8178**.
- Following the non-statutory public hearing, the LRT Concept Plan recommendation will be forwarded to City Council for review and consideration in January 2011



LRT Information Session Schedule

www.edmonton.ca/LRTProjects

Southeast LRT

| | |
|-------------------|--|
| November 24, 2010 | Downtown to Argyll Road |
| November 25, 2010 | Whyte Avenue to Mill Woods Town Centre |

West LRT

| | |
|-------------------|--|
| November 29, 2010 | Lewis Estates to Stony Plain Road/149 Street |
| November 30, 2010 | Stony Plain Road/149 Street to Downtown |

www.edmonton.ca/LRTProjects



Southeast LRT Information Sessions
Downtown to Argyll

www.edmonton.ca/LRTProjects

Thank you!

CH2MHILL

THE CITY OF
Edmonton