



DOWNTOWN ARENA PILE TESTING BULLETIN - JULY 29, 2013

OVERVIEW

Starting Wednesday, July 31, pile load testing will commence on the site for the downtown arena. These pile load tests will involve excavating two sites, inserting concrete piles, and then putting a load (in this case a steel beam) on the piles to test the pile's performance. This testing will help the design team determine how many piles are needed for the arena building. These tests will be completed by mid-October.

CONSTRUCTION ACTIVITY

There will be two excavations on the site (see map on reverse). The dirt will be stockpiled on site to minimize truck traffic in and out of the site. The pile will be covered with tarps to minimize dust. A piling rig will then be brought on site to install the concrete piles, and at that time concrete trucks will bring material to the site.

When testing is complete, the dirt will be backfilled back into the excavated areas, and fencing will be removed, returning the site to its original state.

There will be times, particularly when the pile testing is underway, that there will be limited activity on site.

TRAFFIC

There will be no restrictions to traffic flow during the testing period. Trucks will access the site from 104 Avenue.

SCHEDULE

July 30 - 31	Temporary fences installed on site
August 1 - 19	Excavations
August 12 - 23	Installation of concrete piles
August 19 to September 30	Pile testing
September 30 to mid-October	Backfill excavations and exit site

SAFETY

The pile testing area will be fenced and closed to the public. Signage will be placed in the area to advise the public about the construction activities.

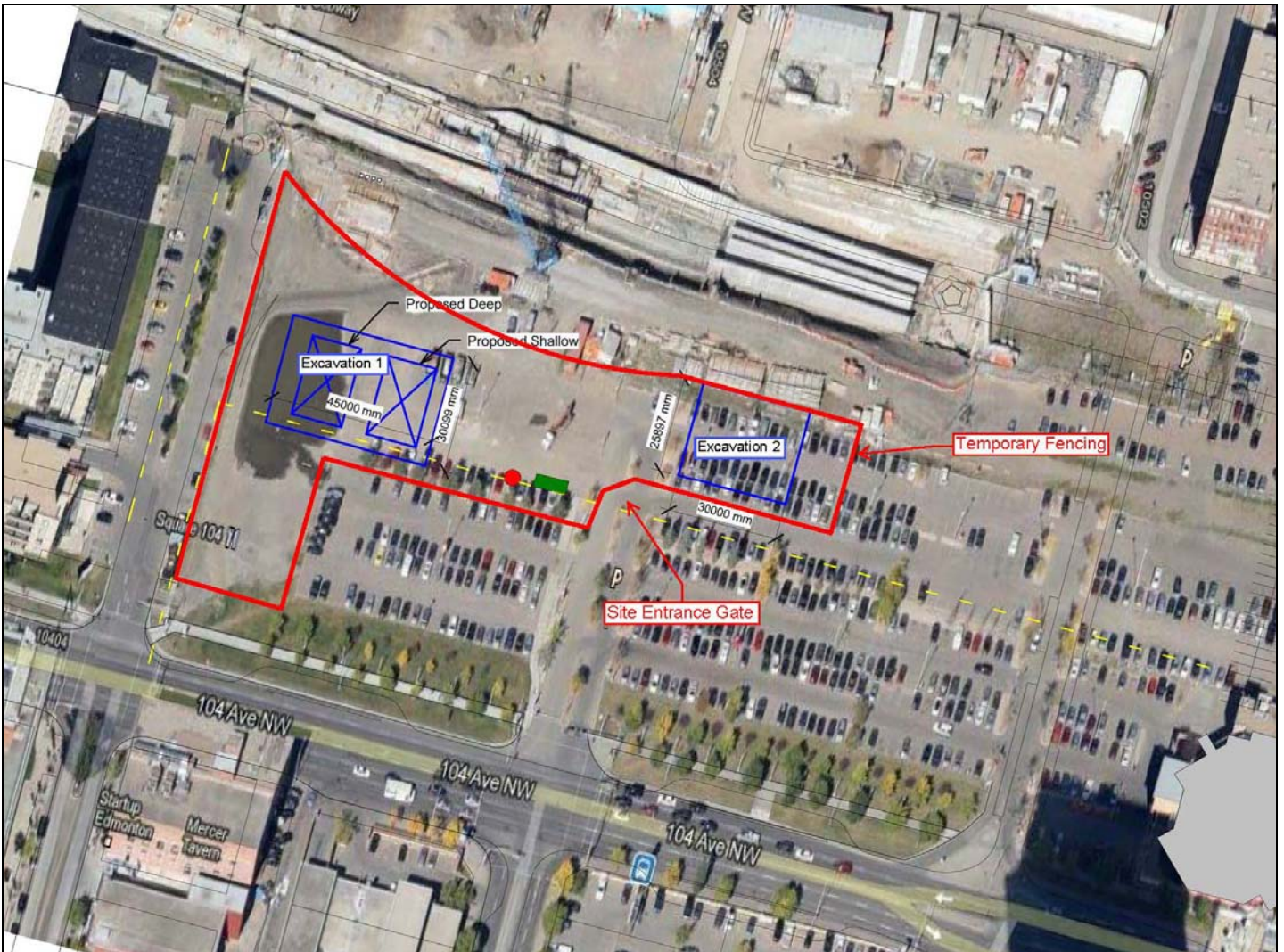
FOR MORE INFORMATION

The information in this bulletin is current to July 29, 2013. All dates are approximate and weather dependent. We thank you for your patience during the pile testing. For more information please contact:

*Eugene Gyorfi
Project Manager, City of Edmonton
(780) 944-7494*



PROPOSED SITE LAYOUT



This is the proposed site layout. Exact locations of fencing and excavation sites may be adjusted.