

BUILDING GREAT NEIGHBOURHOODS

Garneau Neighbourhood Newsletter – October 2020

Edmonton

Garneau's Final Design is ready for you to review!

Garneau's Neighbourhood Renewal kicked off in November 2018 and since then, the Project Team has been busy walking your sidewalks and standing on street corners to observe how you live and move through the area. They held community walks and workshops with you and your neighbours, and met regularly with the Garneau Public Engagement and Communications Committee made up of local residents. Many of you have been along for the entire journey and some of you have just recently tuned in. Either way, we are pleased you have joined us and are eager to share with you the Final Design for Garneau.

The neighbourhood design focuses on making your streets and public spaces safe and accessible in all seasons for all ages, genders, and mobility levels. This newsletter highlights some of changes you will experience as you walk, bike, drive and play in Garneau.

What's Inside:

Project Schedule.....	2
Community Feedback on Final Design.....	2
Public Engagement in Garneau.....	3
How We Engaged.....	4
What We Heard.....	5
How Design Decisions are Made.....	7
Vision and Guiding Principles.....	7
What's in the Final Design for:.....	8
+ Biking.....	8
+ Driving and Traffic.....	9
+ Walking.....	10
+ Playing.....	11
Local Improvements.....	12
Next Steps.....	12

Stay engaged and informed

Final Design Detailed Guide Book

View the entire design online now!

Live Online Event (Registration required)

Thursday, November 5, 2020 6:30 – 7:30 p.m.

Tell us what you think!

Survey open now until November 12, 2020.

Please visit us online at edmonton.ca/BuildingGarneau





Garneau Project Design schedule

**NOVEMBER 2018–
APRIL 2019**

Building a Project
Vision Together

**MAY–SEPTEMBER
2019**

Exploring Opportunities

**OCTOBER–
DECEMBER 2019**

Exploring Options
and Trade-offs

**JANUARY–SEPTEMBER
2020**

Community Feedback
on Draft Design

**WE ARE
HERE**

OCTOBER–DECEMBER 2020

Community Feedback
on Final Design

FEBRUARY 2021

Preparing for Construction and
Local Improvement Decisions

**SPRING 2021–
FALL 2022**

Construction on Your Streets

FALL 2022

Celebrate with Us!

Community feedback on Final Design

Stay engaged and informed

While in-person public events are still on pause and physical distancing remains a priority, we are committed to providing information and input opportunities to you in multiple ways. Please see below for how you can get information and stay engaged.



Final Design Detailed Guide Booklet – Online

This digital booklet will guide you through all of the walking, biking, driving and playing changes and improvements included in Garneau's neighbourhood renewal. See what changed from the Draft Design to the Final Design.



Live event – Online

Join us live online as the City's project team walks you through the Final Design details, answers your questions, and hears your comments.

Thursday, November 5, 2020 from 6:30 – 7:30 p.m.

Please register in advance online.



Survey – Online

Tell us what you think about the Final Design and provide input on parking bays, seating and sidewalk paving treatments.

Survey open until November 12, 2020.



No access to online resources? – No Problem!

For your convenience, paper copies of the Final Design and survey are available at three Community Information board locations:

1. 110 Street (east side) between 83 and 84 Avenue
2. Braithwaite Park – 112 Street at 81 Avenue
3. 86 Avenue, west of 107 Street just south of the Granite Curling Club

Thank you to everyone who has contributed knowledge and experiences to help shape the future of your neighbourhood. Only minor refinements will be considered as we prepare for construction to start in Spring 2021.



Public engagement in Garneau

In November 2018, the Project Team began reaching out to the residents of Garneau to gather local knowledge and experiences to help guide neighbourhood renewal decision making. We received thousands of comments and questions over these last two years and, while the following does not capture each and every individual concern or request, it does highlight some themes we heard consistently.

People have told us:

- + They support the addition of safe, consistent bike infrastructure that takes them to key destinations and connects to other routes.
- + They want the City to consider preserving trees, the need for resident on-street public parking and the accessibility needs of residents located near biking routes.
- + There is a desire for improvements to the condition of the residential roads, a reduction in traffic volumes and speeding, and improvements to roads and intersections where congestion or user confusion frequently occurs.
- + Safety could be improved at some pedestrian crossings.
- + Maintaining and improving the pedestrian experience is a priority.
- + Some community members feel the resident-built unpaved pathways should be preserved.
- + Missing sidewalk connections make it difficult for wheelchairs, strollers, and people with mobility challenges.
- + Parks, and green and open spaces require enhancements and the addition of any new gathering spaces would be welcomed.
- + There is a desire for a fenced off-leash dog park in Braithwaite Park and for improvements to pedestrian connections to parks and green spaces.





How we engaged – Draft Design – June to September

This summer, we reached out to share the Draft Design. It was a first glimpse at how all public input, technical studies and direction from City policies and programs were brought together to create a design for walking, biking, driving and playing.

Just Bikes



Online Engagement

632 page visits



Live Online Event

33 attendees

Draft Design



Online Engagement

833 page visits



Live Online Event

61 attendees



Draft Design Survey

91 respondents



Stakeholder Meetings

MCE Mosque, City Arts Centre, Bader Assisted Living, Abby Road Housing Coop, 108A Street Housing Coop, Garneau Hall, Granite Curling Club, City Arts Centre, University of Alberta

The City also considered feedback received from other communication means such as emails, petitions, and phone calls to the Project Manager.

The Draft Design was also circulated to City departments and utility companies for collaborative discussions about how the design will operate and impact other areas.



What we heard – Draft Design

The following highlights some of the common themes we heard about the Draft Design.

Most respondents support the changes proposed in the Draft Design, agreeing they were going in the right direction to improve walking, biking and driving and playing in Garneau for area residents and other users.

Driving and Traffic

Survey said: 57% agree or somewhat agree the traffic and driving changes will meet the needs of area residents and other users with or without tweaks to the plan and 33% disagree or somewhat disagree and would like to see changes incorporated.

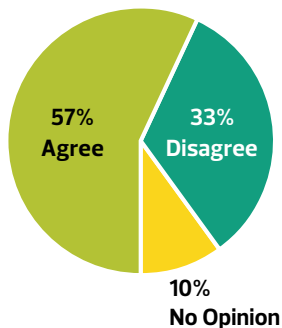
59% think the plan aligns with the Vision and Guiding Principles.

We heard people believe adding measures like curb extensions and shared streets will help reduce speeding and that the one-way roads will help prevent shortcutting.

Some common concerns or suggestions for improvements we heard include:

- + Traffic calming measures are also important along 110 Street, 85 Avenue and the alley parallel to 109 Street from 84 Avenue to 86 Avenue.
- + The measures presented may not be enough to directly reduce shortcutting.

Driving Design Changes



Biking

Survey said: 52% agree or somewhat agree the Draft Design biking changes will meet the needs of area residents and other users with or without tweaks to the plan and 43% disagree or somewhat disagree and would like to see changes incorporated.

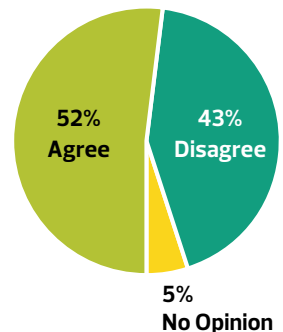
59% think the plan aligns with the Vision and Guiding Principles.

Supporters appreciate the addition of bike lanes and the increased connectivity the plan provides those who bike.

Some common concerns or suggestions for improvements we heard include:

- + Residents living near bike lanes do not want on-street public parking removed near their homes.
- + The 84 Avenue protected on-street bike lane with the raised median will make access to nearby buildings difficult.
- + A bike crossing light would be important at the 109 Street / 81 Avenue intersection.

Biking Design Changes



“ Implement measures which actually discourage shortcutting such as closing streets, creating forced turns, etc.”

“ I am concerned that the 110 Street bike lane will be given traffic flow priority which will result in vehicles on 110 street going fast if they don't have to stop at every intersection.”

“ Recognizes the active transportation needs of the neighbourhood without making car transport impossible.”

“ I do NOT want to lose the street parking directly in front of my house. I do not have a garage or suitable back area for winter parking.”

“ I think you've done a good job providing both north/south and east/west bicycle routes for the neighbourhood.”

You can view all the details at edmonton.ca/BuildingGarneau

Walking

Survey said: 59% agree or somewhat agree the walking changes will meet the needs of area residents and other users with or without tweaks to the plan and 31% disagree or somewhat disagree and would like to see changes incorporated.

59% think the walking plan aligns with the Vision and Guiding Principles.

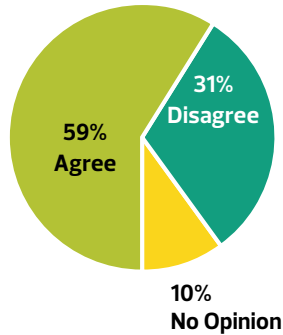
People told us adding enhanced and raised crosswalks, missing sidewalk connections and widening some prime walking routes will improve the pedestrian experience.

Some common concerns or suggestions for improvements we heard included:

- + Unpaved paths are a feature desired by some area residents.
- + Wider sidewalks may create conflicts between pedestrians and e-scooters/bikes.

- “ *This area has long had a series of unpaved paths. To lose these to concrete would be a travesty.* ”
- “ *Mixed-use paths increase vulnerability of pedestrians to e-bikes, scooters, bikes.* ”
- “ *The unpaved paths are aesthetically pleasing but accessibility is important so understand this decision.* ”

Walking Design Changes



Playing

Survey said: 67% agree or somewhat agree the Parks and Open Spaces changes will meet the needs of area residents and other users with or without tweaks to the plan and 22% disagree or somewhat disagree and would like to see changes incorporated.

74% think the parks plan aligns with the Vision and Guiding Principles.

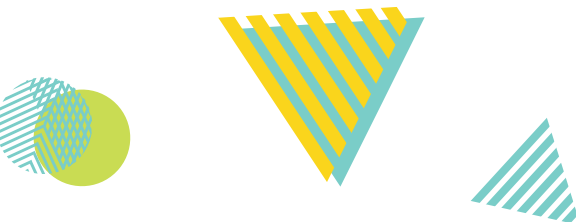
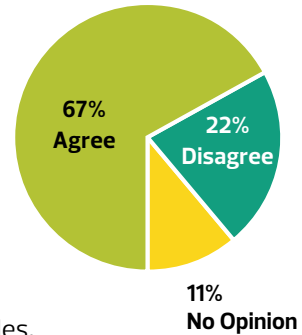
People generally support the improvements proposed for Garneau's parks. Amenities such as the Braithwaite off-leash dog park are thought to increase usage.

Some common concerns or suggestions for improvements we heard included:

- + City Arts Park: The 84 Avenue parking lot entrance may increase shortcutting in the neighbourhood.
- + City Arts Park: Consider switching the parking lot with the park space to move the recreation area away from the busy road and allow entrance to the parking lot off of 109 Street.
- + Park east of 109 Street: Concerns about noise from the proposed multi-use surface area (basketball).
- + Consider adding more benches and seating not just in parks but along walking routes.

- “ *Super excited to have a walkable dog park! Braithwaite is heavily used by people with dogs, so this is a great location.* ”
- “ *I am pleased to see the development of the green space to the north of the curling club! The existing grassy green space has been deteriorating into a muddy parking lot over the last few years. Awesome, thank you.* ”

Playing Design Changes



How design decisions are made

City policies and programs such as the Complete Streets Design and Construction Standards, Vision Zero Edmonton, and Winter City Strategy provide the overall direction for neighbourhood renewal designs. As each neighbourhood is unique, the Project Team asks for input from residents who live, work and play in the neighbourhood and considers technical aspects such as roadway widths, and conflicts with utilities and trees to determine what will fit in the neighbourhood.

Over 9,000 residents live in Garneau, each with needs and opinions on how they envision its future. Over the last two years resident feedback has been collected in a number of ways—surveys, workshops, walking tours, public events, emails/phone calls to the Project Manager, stakeholder discussions and question and answer opportunities. Early public input was used to develop the project Vision and Guiding Principles that, along with ongoing public engagement, continue to guide the Project Team when prioritizing design and budget decisions.



Garneau's Community Vision

Garneau is a unique urban village—a welcoming neighbourhood where a diversity of people live, work, learn, shop, and play, promoting friendly interactions and a high quality of life.

Pedestrian focused, the neighbourhood is safe, inclusive, and accessible for all who walk, bike, drive, and use transit, with inviting public spaces and parks that strengthen its sense of community.

Garneau embraces and enhances its beauty, and builds on its rich historic charm and distinct character.

Guiding Principles



To provide a safe and enjoyable pedestrian experience that encourages walking.



To design safe, user-friendly roadways and intersections that reduce vehicle speeds and discourage shortcutting.



To provide safe connections to neighbourhood amenities and destinations for all modes of travel.



To provide infrastructure, street crossings, and public spaces that are accessible and safe for all ages, genders, and mobility levels, and in all seasons.



To establish new, and enhance existing, public spaces and parks that provide opportunities for community gathering and recreation.



To incorporate urban design that reflects and enhances the neighbourhood's history, beauty, and natural elements.



To prioritize on-street parking for residents and their visitors within a reasonable distance from their homes.

You can view all the details at edmonton.ca/BuildingGarneau

What's in the Final Design for: Biking

The Garneau portion of the South Side Bike Network will provide a consistent bike connection north-south along 110 Street from the 76 Avenue bike lane to the Saskatchewan Drive shared-use path, and provide east-west connections to and from 109 Street. It will also connect the 83 Avenue bike lane to 112 Street.

Location	Final design includes:
80 Avenue: 109 to 110 Street	Painted westbound, shared-use roadway eastbound
84 Avenue: 111 to 112 Street	Protected raised, two-way
85 Avenue: 110 to 112 Street	Painted westbound, shared-use roadway eastbound
86 Avenue: 109 to 110 Street north side	Shared-use path
88 Avenue: 109 to 110 Street	Protected raised, two-way
90 Avenue: east of 110 Street	Shared-use roadway and shared-use path
110 Street: 76 Avenue to Saskatchewan Drive	Protected on-street two-way
111 Street: 83 to 84 Avenue	Protected on-street two-way
111 Street: 82 to 83 Avenue	Painted northbound, shared-use roadway southbound
Rail Trail (south side of rail corridor 107-109 Street)	Shared-use path, shared-use roadway through alley

Bike Connections in Garneau



Bike Facility Types Garneau

On-street Protected: — Shared-use Path: —
 Raised Protected: — Painted Bike Lane / Shared-use Road: —

Definitions:

Shared-use path:

A space off the road where people who bike and walk share the same space.

Shared-use roadway:

A road where people who bike and drive share the same space. These roads are designed to encourage lower speeds.



Input opportunities:

- + Tell us what you think! What are you excited about? What are you most concerned about?
- + 110 Street – Identify locations for parking bays / loading zones and mid-block pedestrian crossings
- + 88 Avenue – Identify locations for parking bays / loading zones

What's in the Final Design for: Driving and Traffic

The Final Design for driving and traffic includes the addition of traffic calming measures such as curb extensions and raised crosswalks, intersection enhancements such as coloured or textured pavement treatment or squaring to decrease confusion, and some traffic flow changes. All residential road surfaces will be replaced.

Location/Topic	Final design includes:
Residential roads	Reconstructed and resurfaced
Traffic signage and direction	Stop, yield signs, direction changes
Parking	Locations and restrictions
80 Avenue: 109 to 110 Street	One-way eastbound traffic, bike lane, median at 109 and 110 Streets
81 Avenue / 110 Street	Squared intersection, bike lane
81 Avenue / 111 Street	Squared intersection, curb extension
84 Avenue: 109 to 112 Street	Chicanes between 109 and 111 Street, raised bike lane between 111 and 112 Street
85 Avenue	Parking both sides 109-110 Streets, painted bike lane 110-112 Street
86 Avenue: 109 to 110 Street	Parking / bus bay, mid-block pedestrian crossing
86 Avenue: 111 to 112 Street	Two-way traffic, curb extensions, raised crosswalks
89 Avenue	Narrowed road from north of 88 Avenue to 89 Avenue (north/south section)
90 Avenue / 110 Street / Saskatchewan Drive	Traffic island, enhanced pavement treatment, pedestrian crossings, curb extensions, shared-use roadway
111 Street	82-83 Avenue - painted bike lane, 83-84 Avenue - on-street protected bike lane, 84-86 Avenue - parking both sides, 86-87 Avenue - parking west side
112 Street	Medians added at ends of painted bike lanes
University Avenue / 110 Street intersection	Bollards to replace median

Traffic signage and direction




Traffic Network Garneau

New Signage:  

Proposed Bike Signal: 

New Traffic Direction: 

Existing Signal: 

Existing Traffic Direction: 

Existing Signage:  

Existing Signage Removed: 



Input opportunities:

- + Tell us what you think! What are you excited about? What are you most concerned about?
- + Comment on parking restrictions



You can view all the details at edmonton.ca/BuildingGarneau

What's in the Final Design for: **Walking**

The design for walking improvements in Garneau includes replacement of all existing sidewalks and, when possible, adding missing sidewalk links. Primary walking routes identified on 110 Street and 84 Avenue will have wider sidewalks, where possible. Several pedestrian crossing locations will be improved with curb extensions and enhanced crosswalks. Tactile warning indicators will be placed along key walking routes to support the visually impaired.

Residential Sidewalk

- + New sidewalks to be installed where missing:
 - 110 Street, 111 Street, 86 Avenue east of 109 Street, Braithwaite Park
- + Existing sidewalks will be replaced at their current width with the following exceptions:
 - 110 Street: Identified as primary walking route:
 - East side will be replaced with wider, where possible
 - 84 Avenue: Identified as primary walking route:
 - North and south sides replaced with wider, where possible
 - 86 Avenue between 109 and 110 Streets:
 - North side replaced with shared-use path
 - 90 Avenue east of 110 Street:
 - South side replaced with shared-use path
- + Sidewalks could not be added to the north side of 90 Avenue east of 110 Street due to the constraints of the river valley slope, trees, and power poles

Rail Trail Shared-use Path Connection

- + The Rail Trail will connect 106 Street to 109 Street:
 - 106 to 108A Street - south side of rail corridor
 - 108A to 109 Street - shared-use road treatment in the alley
 - 109 Street to Saskatchewan Drive - sidewalk widening

Pedestrian Crossings

Curb extensions to be added at:

- + 81 Avenue / 111 Street - northwest, northeast, southeast corners
- + 86 Avenue / 111 Street - southeast corner
- + 90 Avenue / 110 Street - northeast corner
- + Concrete island to be added at: 90 Avenue / 110 Street

Crosswalks to be enhanced at:

- + Near alley west of 109 Street on 83, 84, 85, 86 and 88 avenues
- + 111 Street / 86 Avenue

Visually Impaired Indicators

Tactile warning indicators will be added to intersections along primary walking corridors (84 Avenue, 110 Street) and along 111 Street (83, 85 and 86 avenues)



Input opportunities:

- + Tell us what you think! What are you excited about? What are you most concerned about?
- + Comment on seating locations
- + Choose a bench style
- + Share your preference for sidewalk pavement treatment in Special Character Area

What's in the Final Design for: Playing

The park spaces throughout Garneau are designed with different levels of enhancement to improve usage, beauty and safety. These changes will offer new and different uses of the parks and improve how pedestrians travel through them.

The construction of the park designs is subject to further funding and approvals.

Location/Topic	Final design includes
Braithwaite Park	<ul style="list-style-type: none"> + Dog park enclosed with plantings and fencing + Open area recreation space + New pathways + New tree plantings + Monument relocation + Boulevard sidewalks on 112 Street, 82 Avenue and north side of University Avenue
Adair Park	<ul style="list-style-type: none"> + Plaza with seating + Pedestrian connection
City Arts Centre / Bus Turnaround	<ul style="list-style-type: none"> + Continuous north-south green space / park + Boulevard trees planted along 109 Street + Pedestrian path through park
Park Space at 107 Street / 86 Avenue	<ul style="list-style-type: none"> + Open space for seasonal multi-use programming + Increased green space, trees and greenery + Improved access to existing playground + Playground seating
Trees	<ul style="list-style-type: none"> + New tree plantings throughout community



Adair Park



Input opportunities:

- + Tell us what you think! What are you excited about? What are you most concerned about?
- + Name the park! Suggest a park name for the park space at 107 Street / 86 Avenue.

Local Improvement: Property owner cost sharing opportunities

Decorative street lights and sidewalk reconstruction are **Local Improvements** that are cost-shared by the City and property owners in the neighbourhood.

Standard street lights will be replaced as part of the Neighbourhood Renewal process. However, property owners in each neighbourhood undergoing renewal have the opportunity to upgrade to their community's choice of decorative street lights through a community-initiated local improvement process.

Sidewalk replacement is also a cost-shared improvement. Residents have the opportunity to decide if this improvement proceeds or not. Sidewalks installed where they are currently missing are 100% City funded.

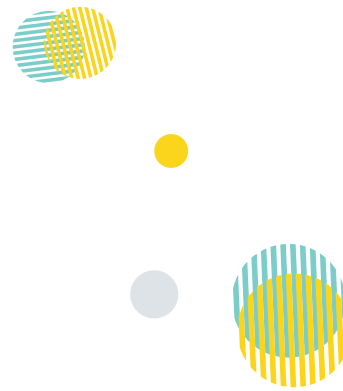
For more information on Local Improvements and the decision process, please visit edmonton.ca/Localimprovements

Reminder to send in your decorative street light choice!

Community volunteers chose several street light options for the Garneau neighbourhood as well as the Special Character Area within Garneau as defined by the Area Redevelopment Plan. The expression of interest for the decorative street lights in the general Garneau area has been mailed out to all property owners in Garneau. Please remember to return your notice – in support OR not in support by November 15, 2020.



Note: The Special Character Area (highlighted in blue on the map) expression of interest for decorative streetlights is now complete. This area will be moving forward with special character lighting.



Next steps

Pre-construction and Local Improvement Information –
February / March 2021

Construction on your streets –
Spring 2021 – Fall 2022

Stay informed

For more information, and to sign up for project updates, go to edmonton.ca/BuildingGarneau

For more information:

Web: edmonton.ca/BuildingGarneau

Email: buildinggreatneighbourhoods@edmonton.ca

Call: 311

