

BOYLE STREET AND MCCAULEY NEIGHBOURHOOD RENEWAL

Sidewalks and Street Crossings



What We Heard

We heard that Boyle Street and McCauley are highly used pedestrian oriented neighbourhoods and there are several locations that could benefit from wider sidewalks, others where there are missing sidewalk connections and intersections where pedestrians have concerns when crossing a street.

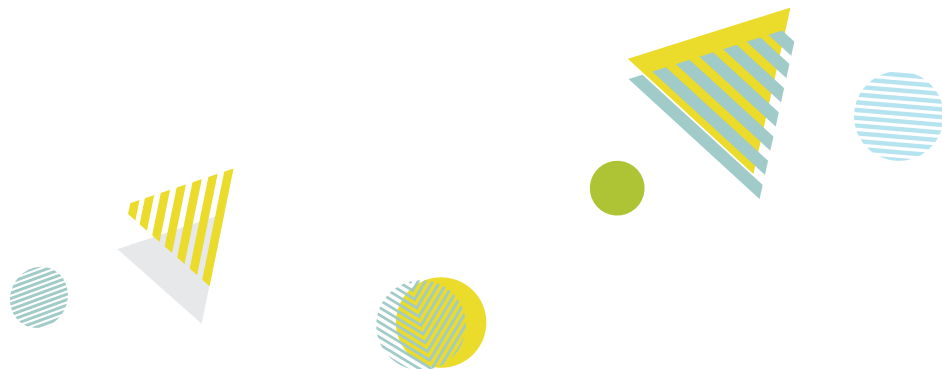
Pedestrian: References to Pedestrians within this document include the following uses:

- + walking
- + manual / motorized wheelchairs or scooters
- + pushing bicycles
- + running
- + canes or walkers
- + various other low-speed forms of human locomotion
- + standing
- + pushing strollers or carts

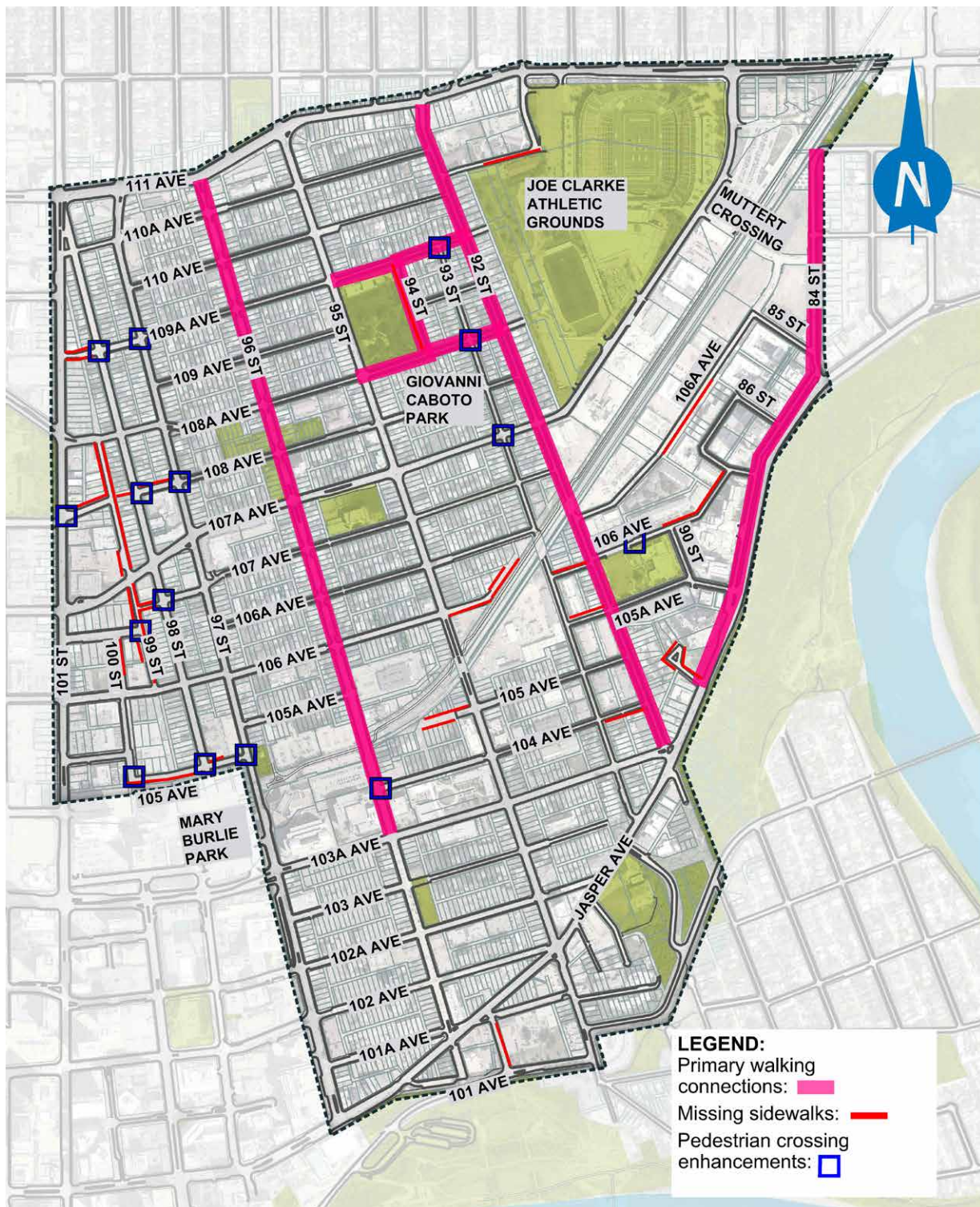
Please review the proposed improvements for sidewalks and street crossings in Boyle Street and McCauley and tell us what we should consider in our plans.

TOPIC	PROPOSED CHANGE / DESIGN
<p>Primary Walking Routes</p>	<p>Wider sidewalks along primary walking routes and surrounding schools and major parks including:</p> <ul style="list-style-type: none"> + 96 Street – Jasper Avenue to 111 Avenue + 92 Street – Jasper Avenue to 111 Avenue + 108a Avenue – 92 Street to 95 Street + 109a Avenue – 92 Street to 95 Street + Giovanni Caboto Park + St. Theresa School
<p>Missing Sidewalks</p>	<ul style="list-style-type: none"> + Sidewalks added where missing
<p>Pedestrian Crossings</p>	<ul style="list-style-type: none"> + Enhanced crossings (curb extensions, mid-block crossings) + Pedestrian crossing signal at 97 Street and 105 Avenue

Out of scope: We heard other routes along arterials such as 95 Street, 97 Street, 107A Avenue, 103A Avenue and Jasper Avenue are popular pedestrian routes, but these locations are out of scope for this project.



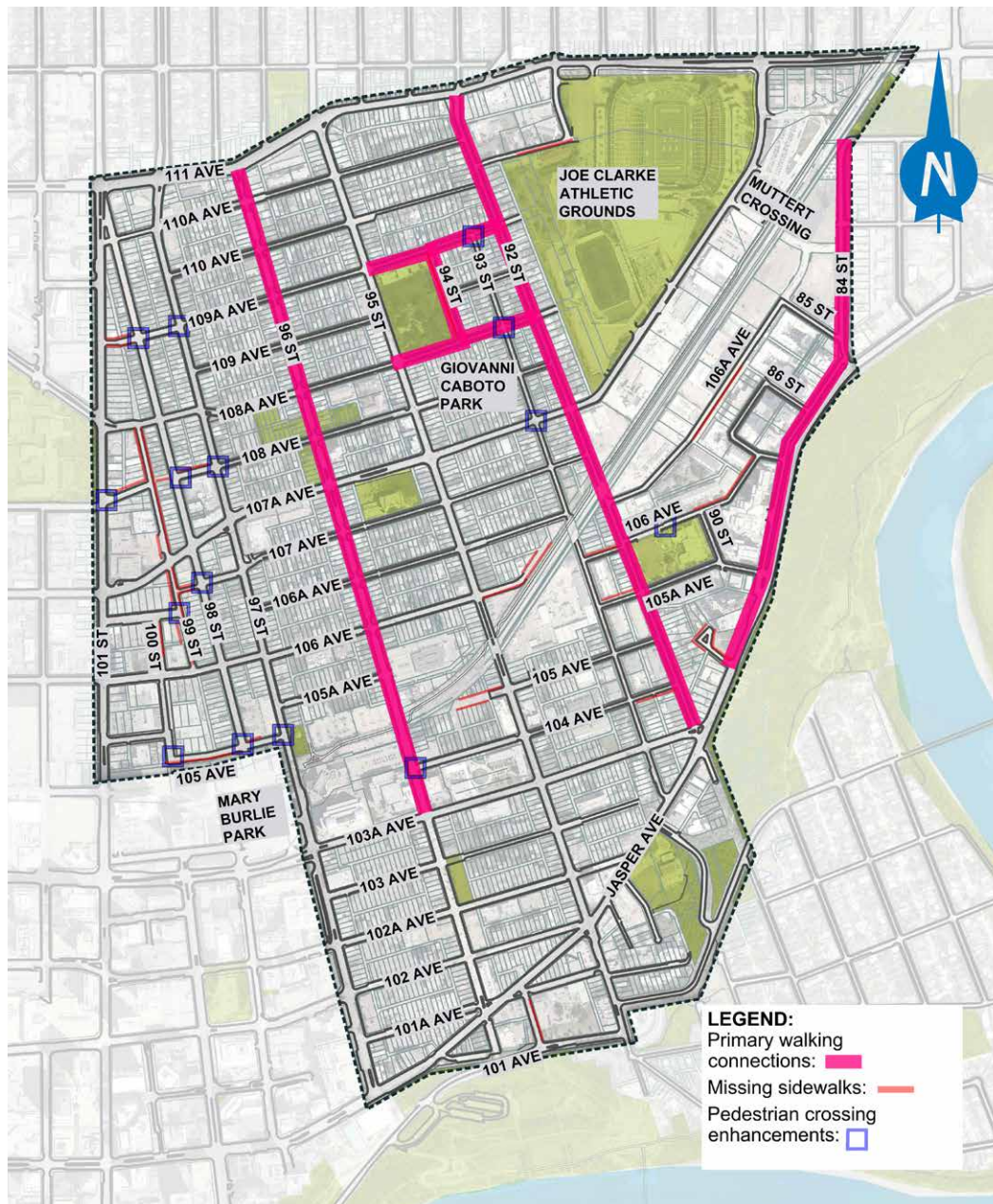
Sidewalk and Street Crossing Proposed Design



Primary Walking Routes

We heard that Boyle Street and McCauley are both high pedestrian neighbourhoods and there are several locations that could benefit from wider sidewalks to accommodate users.

WIDER SIDEWALK LOCATIONS



Based on public input showing where people walk most often, the design is considering the following locations for wider sidewalks:

- + 96 Street – Jasper Avenue to 111 Avenue
- + 92 Street – Jasper Avenue to 111 Avenue
- + 108a Avenue – 92 Street to 95 Street
- + 109a Avenue – 92 Street to 95 Street

The design also considers adding wider sidewalks around park spaces and schools including:

- + Giovanni Caboto Park
- + St. Theresa School



Input Opportunity:

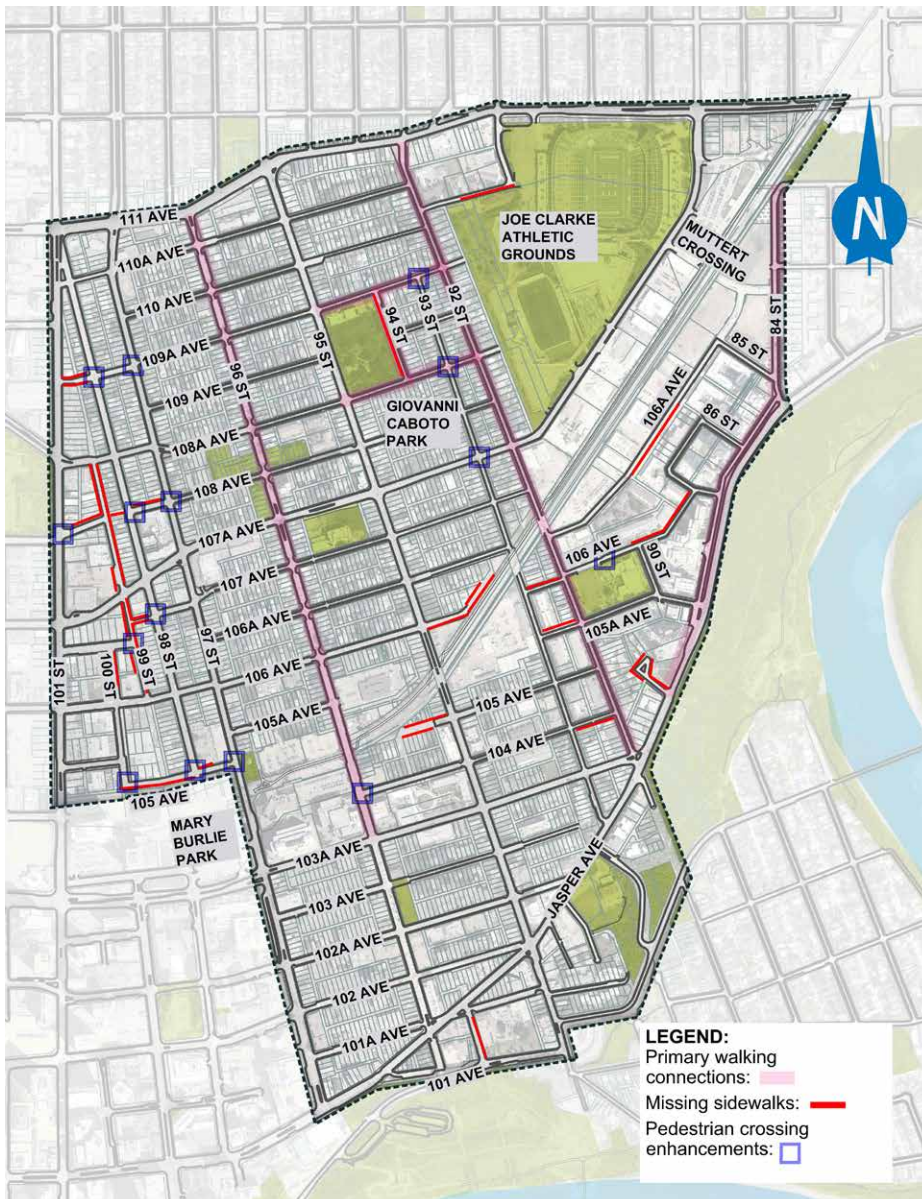
Are there other locations that we should consider for wider sidewalk treatments?

Missing Sidewalks

We heard that there are several locations where pedestrians encounter missing sidewalk connections throughout the neighbourhoods.

Please review the locations where we are considering adding in new sidewalks.

MISSING SIDEWALK LOCATIONS



Input Opportunity:
Are there other missing sidewalk connections that we should consider adding?

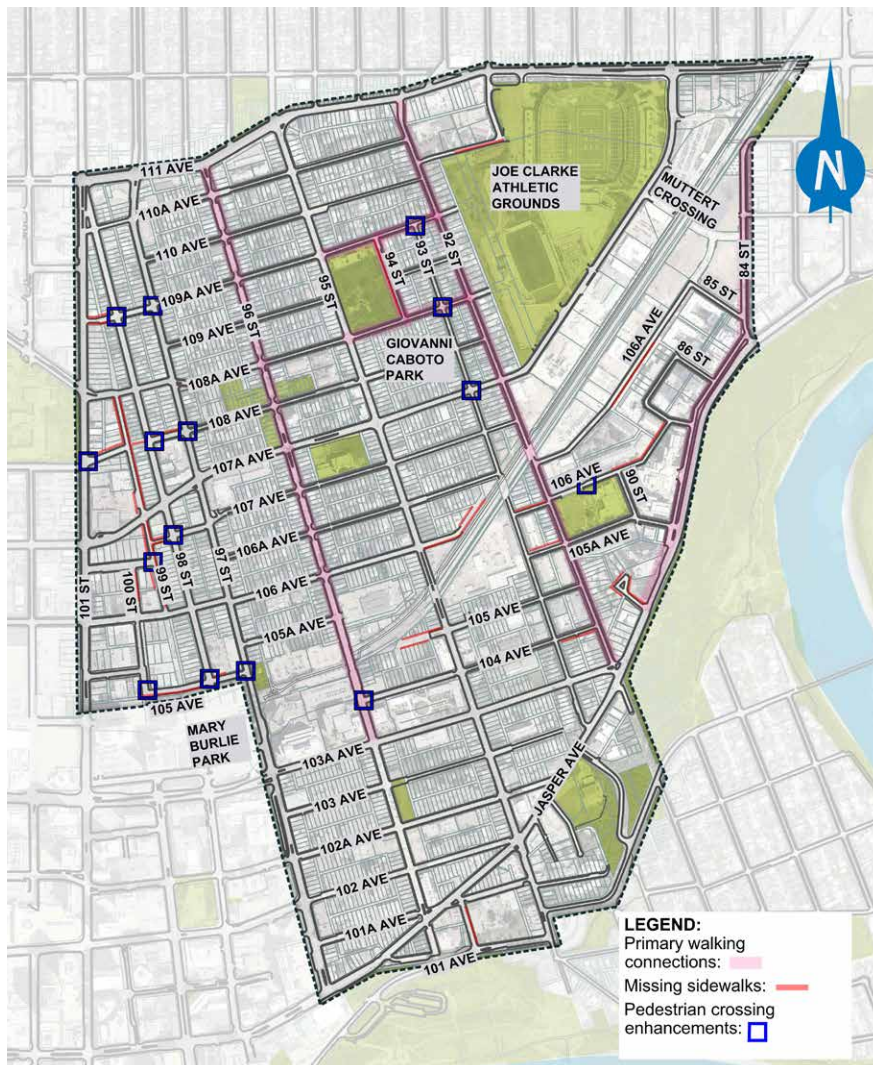
Pedestrian Crossings

We heard there are several locations throughout Boyle Street and McCauley where pedestrians have concerns when crossing a street.

The design identifies several locations where we heard crossing a street feels unsafe, visibility is low or that an improved crossing would be convenient.

Each location identified will be considered for an improved crossing treatment such as curb extensions, raised crosswalks or, pedestrian signals or markings.

LOCATIONS FOR PROPOSED IMPROVED CROSSINGS



Improved Pedestrian Crossing Examples

PEDESTRIAN FLASHER



FULL SIGNAL



CURB EXTENSION



MARKED CROSSWALK



RAISED CROSSWALK



Input Opportunity:

Are there any other locations in Boyle Street and McCauley where we could consider improved pedestrian crossings?