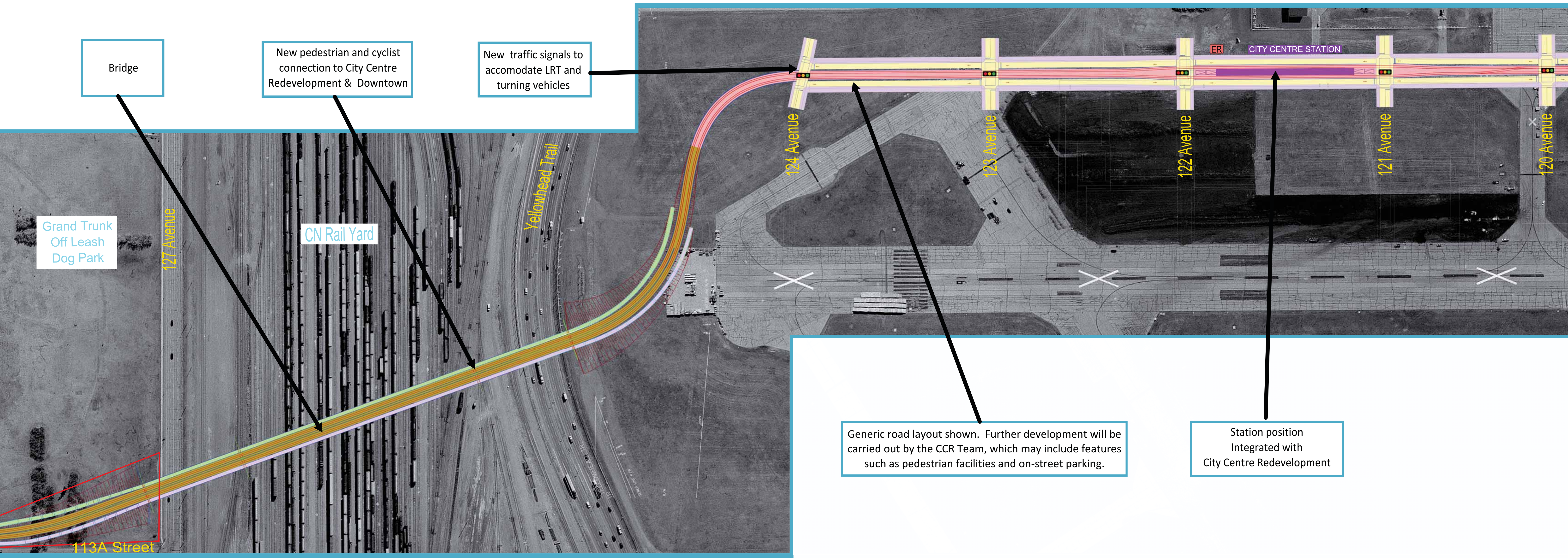
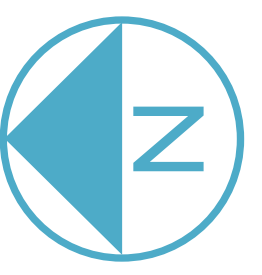


NORTHWEST LRT - CITY CENTRE REDEVELOPMENT



Bridge

New pedestrian and cyclist connection to City Centre Redevelopment & Downtown

New traffic signals to accommodate LRT and turning vehicles

Grand Trunk Off Leash Dog Park

CN Rail Yard

Yellowhead Trail

124 Avenue

123 Avenue

122 Avenue

121 Avenue

120 Avenue

CITY CENTRE STATION

Generic road layout shown. Further development will be carried out by the CCR Team, which may include features such as pedestrian facilities and on-street parking.

Station position Integrated with City Centre Redevelopment

TRANSIT ORIENTED DEVELOPMENT (TOD)

At station locations, City policy supports transit oriented development, as specified in the TOD Guidelines or determined through a station area planning process.

LEGEND

- | | | |
|-------------------|--------------------------------|---------------------|
| LRT at Grade | Existing Bus Stop | Pedestrian Crossing |
| Underground LRT | Directional Arrows | LRT Equipment Room |
| Elevated LRT | Pavement Markings | Trees / Planting |
| LRT Station | Fence | Bicycle Parking |
| Roadworks | Signal Intersection | Signal Bungalow |
| Shared Use Path | Signalised Pedestrian Crossing | Access Closed |
| Sidewalk | | |
| On-Street Parking | | |
| Property Required | | |