

NORTHWEST LRT - DRAFT CONCEPT PLAN

SEPTEMBER 2012

We're moving forward. Get involved.

On July 7, 2010, City Council approved the Northwest LRT Corridor that will run from NAIT to the Northwest City Limits to serve the communities in northwest Edmonton.

Since then, the project team initiated work to define:

- Track and station locations
- Pedestrian and cyclist connections
- Road and vehicle access changes

At public consultation in June 2012, options were presented to obtain feedback and comments. The project team has evaluated the options and refined the design to create a draft concept plan.

Highlights:

Length 11 km (NAIT to NW City Limits)

Stations Potentially 9 stations

LRT Vehicles Existing Edmonton style high-floor vehicles

Anticipated Journey Time

- 30 minutes: Campbell Road to Downtown
- 40 minutes: Campbell Road to University

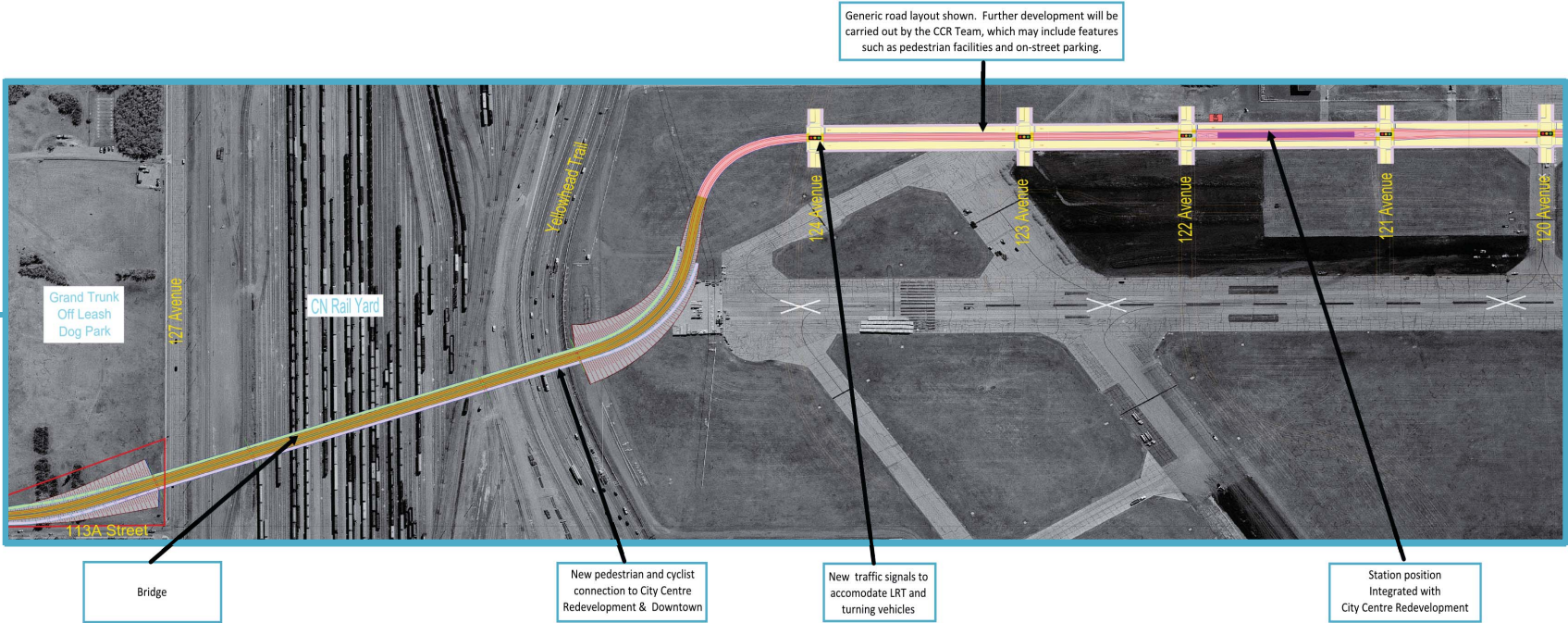
Urban Style

- Designed to fit within urban environment
- Integration of LRT into communities served
- Smaller scale stations
- Reduced property requirements
- Fewer barriers
- Use of landscaping, streetscaping and architectural features
- Direct transit, pedestrian and cycle connections

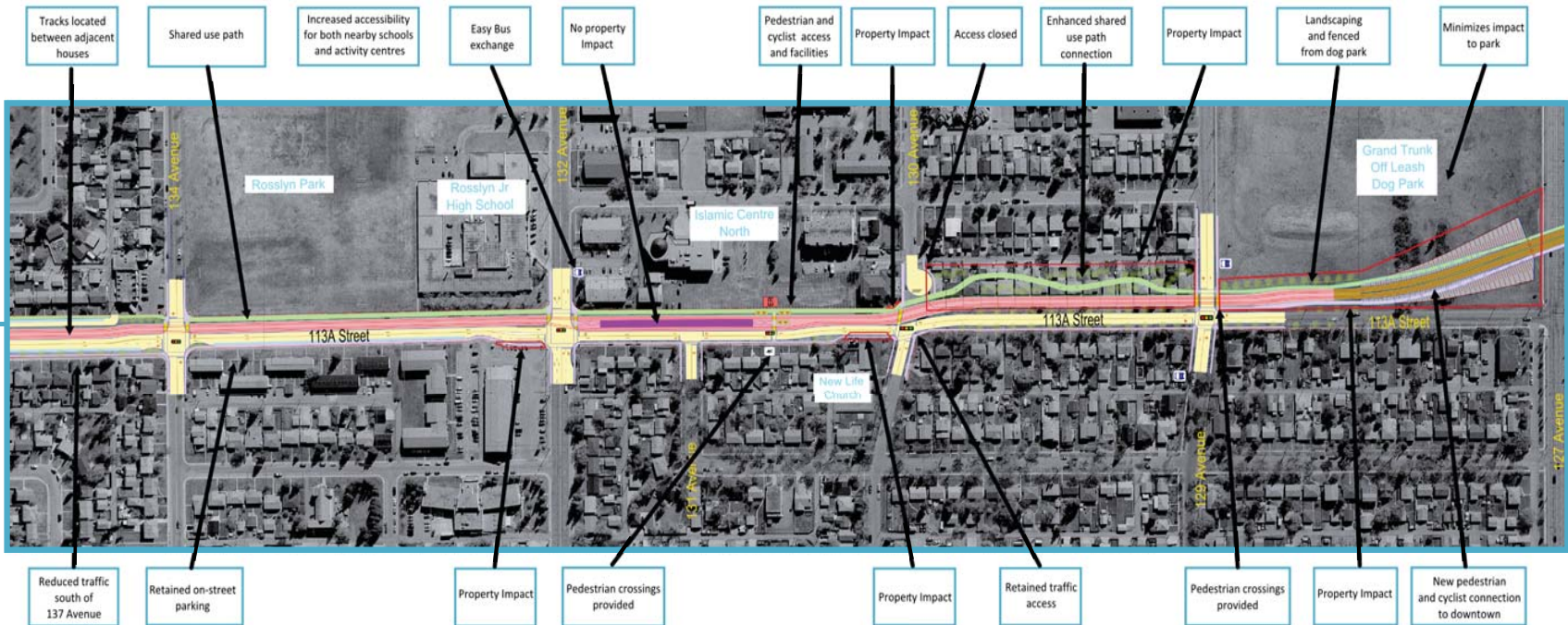


NORTHWEST LRT - STATIONS & ALIGNMENT

CITY CENTRE REDEVELOPMENT

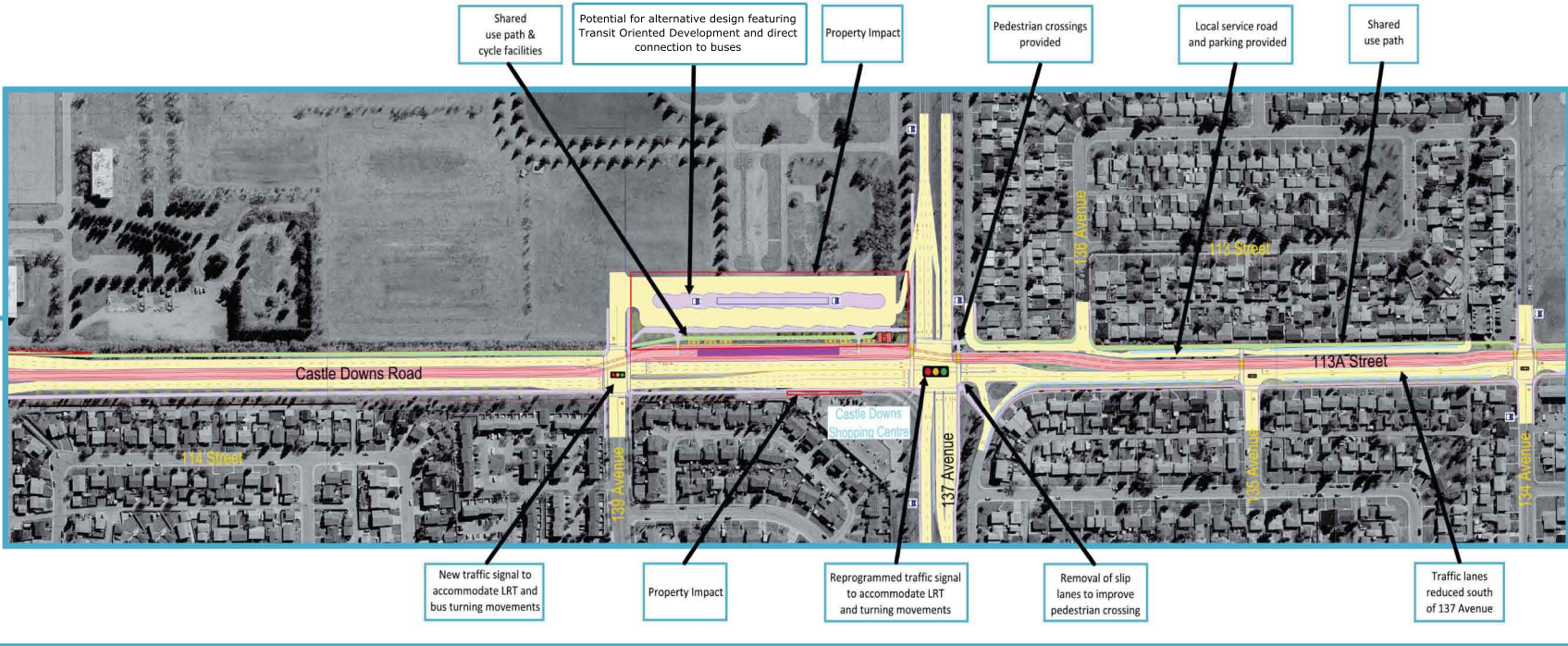


132 AVENUE STATION

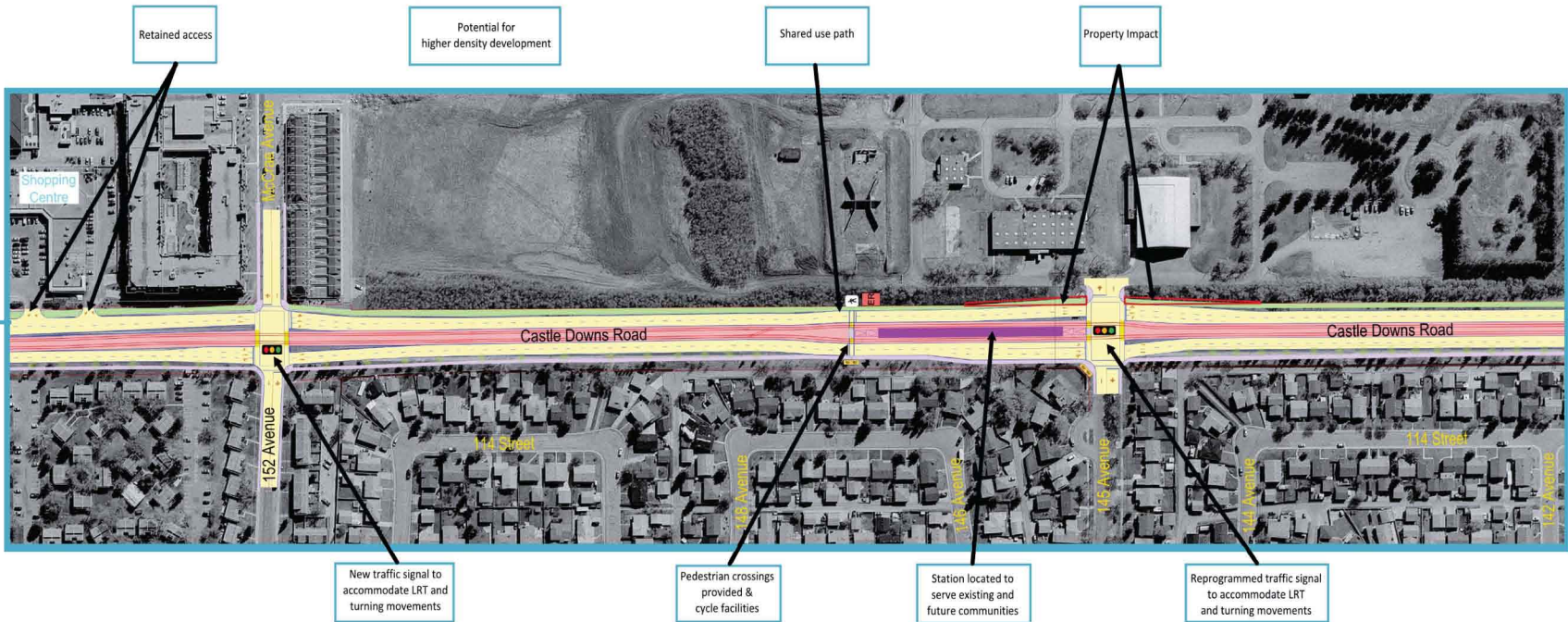


NORTHWEST LRT - STATIONS & ALIGNMENT

137 AVENUE STATION

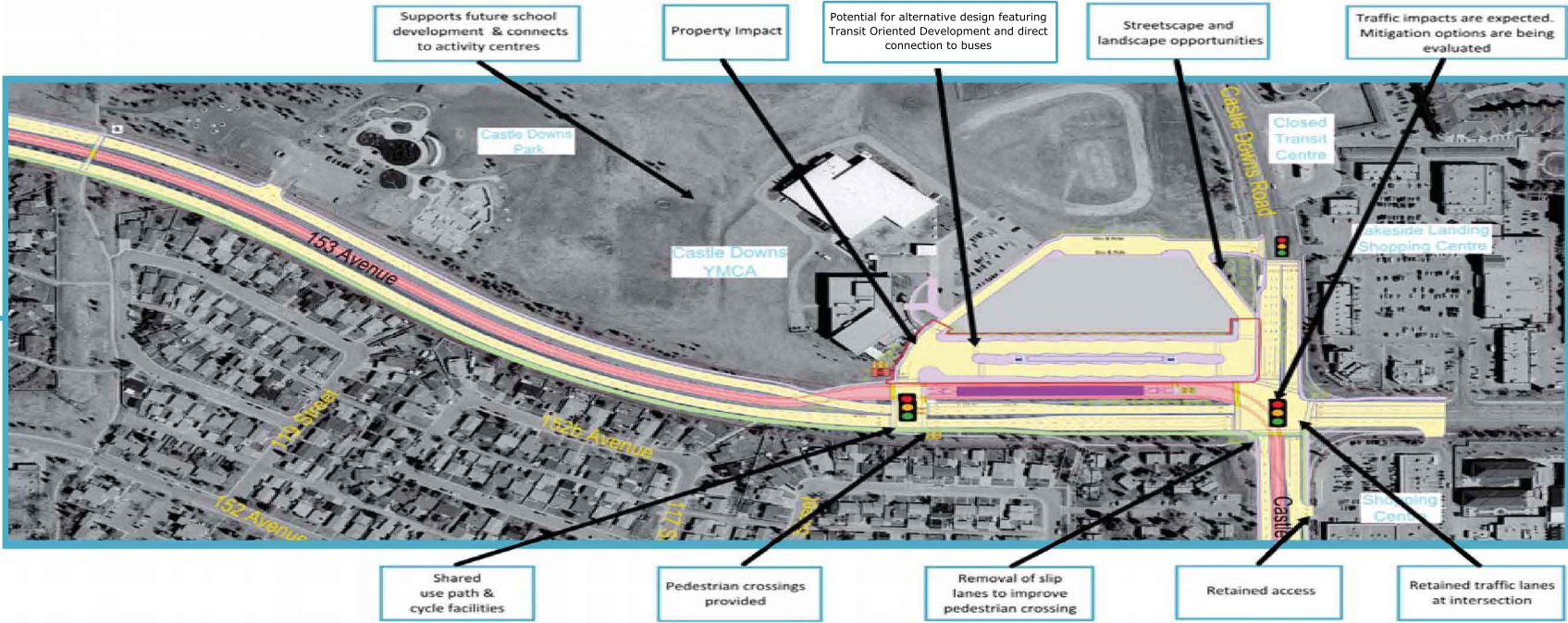


145 AVENUE STATION

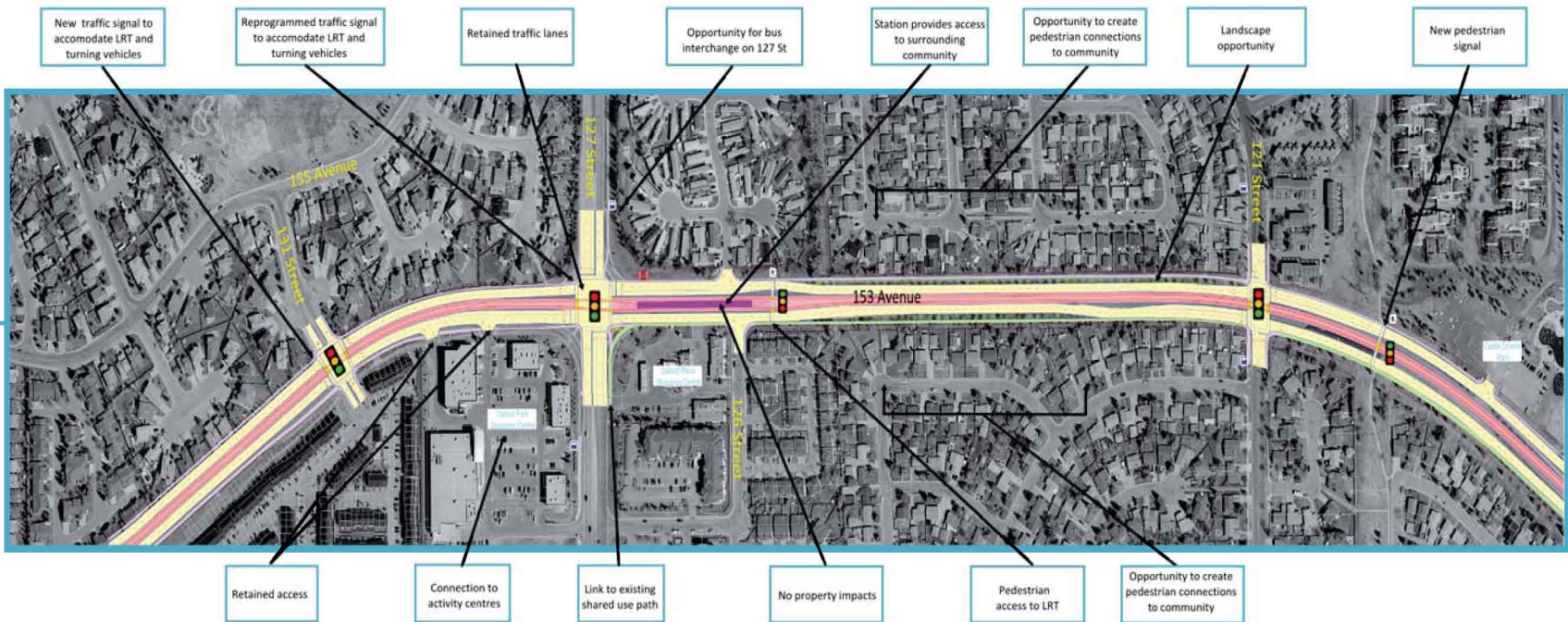


NORTHWEST LRT - STATIONS & ALIGNMENT

CASTLE DOWNS STATION



127 STREET STATION



NORTHWEST LRT - STATIONS & ALIGNMENT

137 STREET STATION



CAMPBELL ROAD STATION

