

## PERFORMANCE

*This dashboard provides an overview of progress and performance of the Valley Line West LRT Project and a summary of work completed by Marigold Infrastructure Partners (MIP) and the City.*

### CUMULATIVE PERFORMANCE

### NOTES

#### COST PERFORMANCE

*Measures the cost efficiency of the project*

Current cost performance is good. The project remains on budget.

#### SCHEDULE PROGRESS

*Measures the schedule status of the project*

Current schedule performance is moderate; however, no key dates have shifted as per latest schedule.

#### SCOPE PERFORMANCE

*Measures the current status of scope changes compared to the baseline scope*

There have been no significant changes to either Marigold Infrastructure Partners (MIP) scope of work or other City-contracted scope of work.

#### PUBLIC COMMUNICATIONS

*Most common public inquiries for the period*

The most common public inquiries for the period are related to questions about traffic issues, construction impacts, damage claims, access closures, pedestrians and parking.

## RECENT PROGRESS

*A summary of construction progress along the alignment. Several examples are showcased in pictures.*

### Marigold Infrastructure Partners (MIP) work in Q3:

Work continued on the retaining wall at Lewis Farms (Figure A) as well as piling for the Lewis Farms Storage Facility Building. Grading and lighting installation at the Park 'n' Ride was also underway. MIP continued work on the Elevated Guideway along 87 Avenue in Area 6, including drilling piles (Figure B). Fabrication of the Elevated Guideway girder precast segments commenced during the period. Drainage work (including sewer installation and soil cell installation) and both temporary and permanent roadways construction work proceeded (Figures C and D). Utility construction along Meadowlark Road was ongoing. Earthworks/grading continued at Gerry Wright Operations and Maintenance Facility Parcel B (Figure E).

### Hyundai-Rotem Company (HRC) work in Q3:

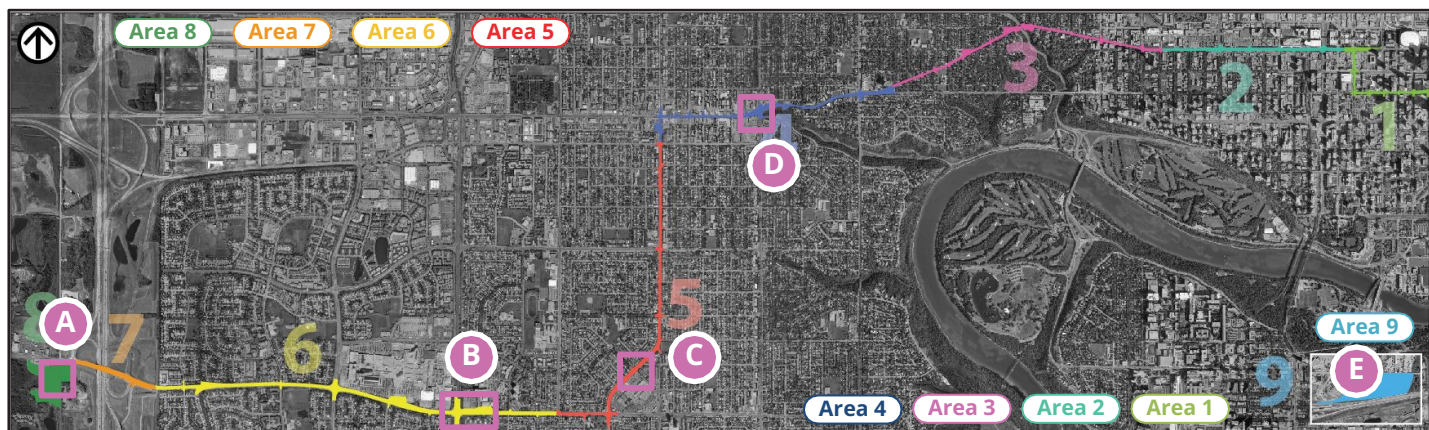
During Q3, HRC continued to advance Preliminary Design of the LRVs, fleshing out the design and functionality of vehicle systems. Members of the project team visited HRC offices in Korea through the end of August to early September to participate in technical discussion workshops.



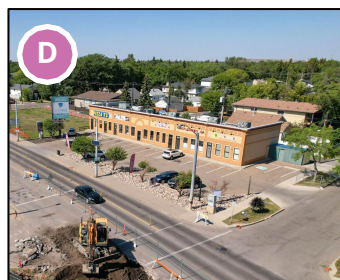
Area 8 - Retaining wall construction at Lewis Farms



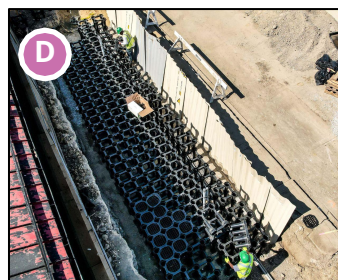
Area 6 - Drilling for piles at WEM Station



Area 5 - Drainage installation on Meadowlark Road



Area 4 - Median Removals on Stony Plain Road and 147 Street



Area 4 - Soil Cell Work on Stony Plain Road



Area 9 - Earthworks continuing at OMF - Parcel B

## MILESTONES

AREA	COMPLETED MILESTONES	COMPLETION DATE
6	Completed 61 out of 66 piles on Elevated Guideway along 87 Avenue	Q3 2022
6	First Elevated Guideway girder segment cast	September 2022
8	Retaining wall construction complete	Q3 2022
AREA	UPCOMING MILESTONES	FORECASTED DATE
6	Piling work along Elevated Guideway completed	October 2022
8	Lewis Farms Storage Facility Building piles completed	Q4 2022
9	Pembina pipeline tie-in to be completed	Q4 2022
LRV	Preliminary Design Review workshops with HRC in South Korea	December 2022

## KEY ACTIVITY 3-MONTH LOOK-AHEAD

The highlights correspond to the areas of the alignment on the map above.

**Area 3:** Preparations for Stony Plain Road bridge demolition are planned for end of 2022.

**Area 4:** Surface drainage work will occur through November along Stony Plain Road.

**Area 5:** Drainage work will occur through November. Top soil removal is also planned.

**Area 6:** The fabrication of the Elevated Guideway girder pre-cast segments will continue. Pier construction work will also continue along 87 Avenue. Piling for the guideway's approach ramp and abutment will continue towards the end of Q4 2022.

Structural columns and beams construction for the WEM and Misericordia Stations is planned to occur in Q4 2022.

**Area 7:** Work on the Anthony Henday Drive Bridge West approach ramp will be underway.

**Area 8:** Lewis Farms retaining wall construction will continue into October. Continuation of Lewis Farms Storage Facility Building foundations. Park 'n' Ride paving is ongoing, with some stalls to open this year.

**Area 9:** Gerry Wright OMF site drainage and piling work of the OMF Building B to commence in Q4 2022. Pembina pipeline tie-in to be completed in October.

**Light Rail Vehicles (LRVs):** HRC to visit Edmonton in mid-October for technical discussions. City team to visit South Korea in December 2022. Preliminary Design Review phase to continue in Q4.