

## PERFORMANCE

*This dashboard provides an overview of progress and performance of the Valley Line West LRT Project and a summary of work completed by Marigold Infrastructure Partners and the City of Edmonton.*

### CUMULATIVE PERFORMANCE

### NOTES

#### COST PERFORMANCE

*Measures the cost efficiency of the project*

Current cost performance is good. The project remains on budget.

#### SCHEDULE PERFORMANCE

*Measures the schedule status of the project*

As of Q1, construction progress as measured by the independent certifier is 6.0%.

#### SCOPE PERFORMANCE

*Measures the current status of scope changes compared to the baseline scope*

There have been no significant changes to either Marigold Infrastructure Partners scope of work or other City-contracted scope of work.

#### PUBLIC COMMUNICATIONS

*Most common public inquiries for the period*

The most common public inquiries for the period are related to questions about traffic, construction impacts and timelines.

## RECENT PROGRESS - SUMMARY

### Marigold Infrastructure Partners (MIP) work in Q1:

During the first quarter of 2023, construction activities were underway in several locations along the Valley Line West LRT corridor. MIP continued with construction of the train storage facility at Lewis Farms, which included erecting structural steel for the building (Photo A). MIP also started driving steel piles for the LRT bridge over Anthony Henday Drive (Photo B). A major activity throughout Q1 was the erection of Y-piers for the elevated guideway along 87 Avenue. Photo C shows Y-piers and the gantry crane, which will hoist precast concrete segments that will form the elevated guideway superstructure. In Q1, 78 segments were cast. Drainage and temporary roadworks have been underway throughout Areas 4, 5 and 6 in preparation for construction this summer (Photo D). Following the demolition of the Stony Plain Road Bridge at the end of 2022, piling work for the new bridge commenced during this quarter (Photo E). Work at Gerry Wright OMF-B continued, with Continuous Flight Auger (CFA) piling for the building currently underway (Photo F). Finally, MIP completed the majority of tree removals along the LRT corridor by the end of Q1 2023.

### Hyundai-Rotem Company work in Q1:

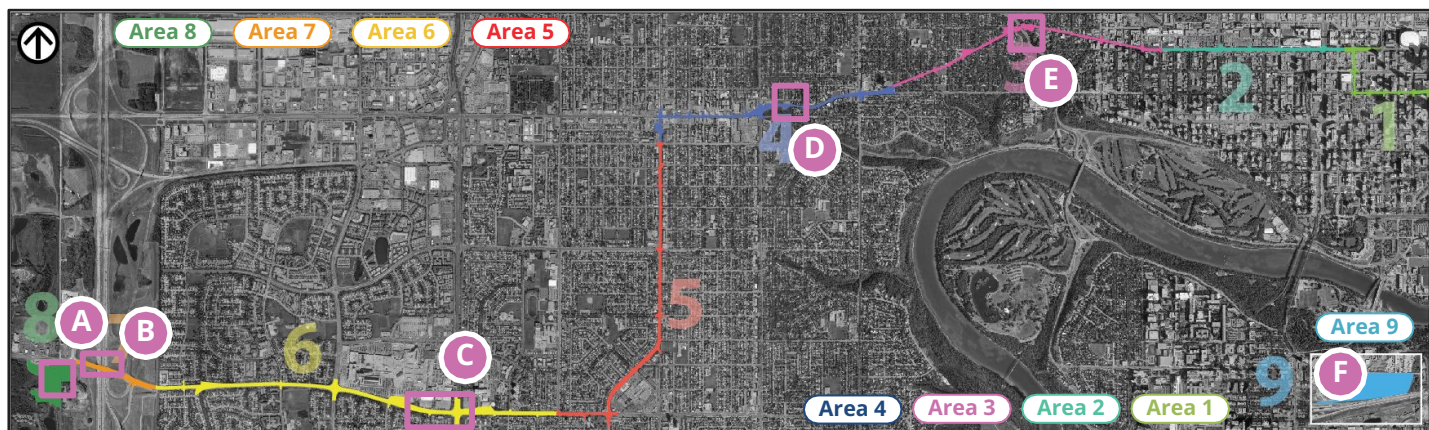
During Q1, reviews for the preliminary light-rail vehicle (LRV) design submittals were ongoing. In March, a major milestone occurred when a full-scale model of a portion of the future LRV arrived in Edmonton. This model will be used by the City to evaluate and improve various technical, driver-facing and user-facing elements of the train.



Area 8 - Structural steel construction for the storage facility at Lewis Farms



Area 7 - Steel piles for the Anthony Henday Drive LRT bridge



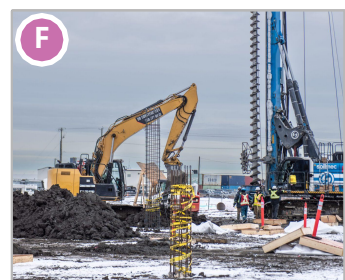
Area 6 - Piers and gantry crane for the elevated guideway along 87 Ave



Area 4 - Drainage work along Stony Plain Road



Area 3 - Piling work for Stony Plain Road Bridge



Area 9 - CFA pile installation at Gerry Wright OMF-B

## MILESTONES

AREA	COMPLETED MILESTONES	COMPLETION DATE
3	Completion of Stony Plain Road Bridge removal	January 2023
3	Start of piling for Stony Plain Road Bridge	March 2023
7	Start of piling for LRT Bridge over Anthony Henday Drive, west approach	January 2023
8	Structural steel erection commenced at Lewis Farms storage facility	February 2023
LRV	Delivery of the partial, full-scale LRV model from South Korea	March 2023

AREA	UPCOMING MILESTONES	FORECASTED DATE
3	Stony Plain Road closure between 131 Street and 139 Street Girder erection for Stony Plain Road Bridge	Q2 2023 Q3 2023
6	Start of precast concrete segment erection for 87 Avenue Elevated Guideway	Q2 2023
7	Girder erection for LRT Bridge over Anthony Henday Drive	Q3 2023
9	Start of structural steel erection at Gerry Wright OMF-B	Q2/Q3 2023
LRV	Completion of preliminary design review process	April 2023

## KEY ACTIVITY 3-MONTH LOOK-AHEAD

The highlights correspond to the areas of the alignment on the map above.

**Area 3:** Stony Plain Road Bridge piling to continue. Abutment construction to commence.

**Area 4:** Drainage work to continue.

**Area 5:** Drainage work to continue.

**Area 6:** Concrete segment fabrication, Y-piers, columns, for the elevated guideway to continue. Misericordia Station columns and straddle bents to commence.

**Area 7:** Piling on the Anthony Henday Drive LRT Bridge west approach to continue as well as pouring pile caps, abutment caps and piers.

**Area 8:** Metal decking, roofing and steel erection for the train storage facility at Lewis Farms to continue.

**Area 9:** OMF Building B piling to complete, grade beams to continue and steel erection to begin.

**LRVs:** Final design review will be underway throughout Q2. The user testing of the partial, full-scale LRV model to be conducted in April.