

## PERFORMANCE

*This dashboard provides an overview of progress and performance of the Valley Line West (VLW) LRT Project and a summary of work completed by Marigold Infrastructure Partners (MIP) and the City of Edmonton (City).*

CUMULATIVE PERFORMANCE	NOTES
<b>COST PERFORMANCE</b> <i>Measures the cost efficiency of the project</i>	Current cost performance is good. The project remains on budget.
<b>SCHEDULE PERFORMANCE</b> <i>Measures the schedule status of the project</i>	As of the end of Q4, construction progress as measured by the independent certifier is 14.7%.
<b>SCOPE PERFORMANCE</b> <i>Measures the current status of scope changes compared to the baseline scope</i>	There have been no significant changes to either MIP's scope of work or other City-contracted scopes of work.
<b>PUBLIC COMMUNICATIONS</b> <i>Most common public inquiries for the period</i>	The most common public inquiries for the period are related to traffic, pedestrian and construction impacts and access closures.

## RECENT PROGRESS - SUMMARY

### MIP work in Q4:

During Q4 2023, design and construction activities were underway at the following locations along the VLW LRT alignment. In **Area 8**, MIP continued Lewis Farms Storage Facility construction (Photo A), which included roofing, wall panels, site drainage, vaults and duct banks. In **Area 7**, Anthony Henday Drive (AHD) Bridge work continued on the east approach on the permanent retaining wall (Photo B). In **Area 6**, MIP continued work on the elevated guideway, Misericordia Station, and West Edmonton Mall Station. A total of 335 elevated guideway precast girder segments were cast as of December. Work on the Grovenor Stop continued in **Area 4** (Photo C). In **Area 3**, concrete pouring continued on the Stony Plain Road Bridge (Photo D). Civil drainage and temporary roadworks continue throughout **Areas 2, 3, 4, 5, 6** and **7** in preparation for upcoming construction (Photo E - **Area 2**). In **Area 9**, building foundation and structural steel continued and piling for installing OCS overhead catenary system (OCS) poles started at the Gerry Wright Operations & Maintenance Facility (Photo F).

### Hyundai Rotem Company (HRC) work in Q4:

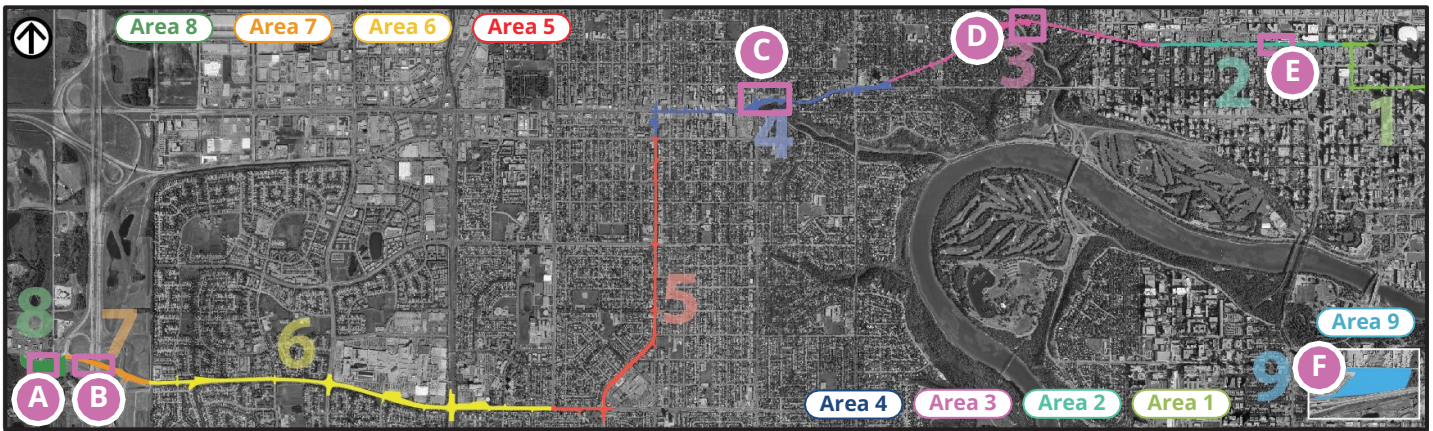
Final design review for the Stage 2 light-rail vehicle (LRV) continued throughout Q4. Review will continue into 2024.



Area 8 - Lewis Farms Storage Facility



Area 7 - Anthony Henday Drive Bridge Construction



Area 4 - Grovenor Stop  
Construction Progress



Area 3 - Stony Plain Road Bridge  
Concrete Pour



Area 2 - 104 Avenue Civil Drainage  
Installation and Abandonments



Area 9 - Gerry Wright OMF  
Construction

## MILESTONES

AREA	COMPLETED MILESTONES	COMPLETION DATE
4, 5	Commenced piling for stops, utility complexes and overhead catenary system (OCS) foundations	October 2023
8	Lewis Farms Storage Facility building structural steel installation complete	November 2023
AREA	UPCOMING MILESTONES	FORECASTED DATE
7	Girder erection for Anthony Henday Drive (AHD) Bridge	Q1 2024
6	Commence Misericordia Station girder erection	Q1 2024
9	Install grade beam and pile caps for Gerry Wright OMF	Q1 2024

## KEY ACTIVITY 3-MONTH LOOK-AHEAD

The highlights correspond to the areas of the alignment on the map above.

**Area 1:** Start drainage work. Continue utility relocations.

**Area 2:** Continue drainage, roadworks and utility complex site grading.

**Area 3:** Continue drainage, roadworks, Glenora Stop construction, Stony Plain Road Bridge deck and support work. Start OCS foundations.

**Area 4:** Complete drainage related to first stage of roadway construction. Continue roadworks, utility complex mobilization piling and caps pour, Grovenor Stop construction.

**Area 5:** Continue various drainage and roadworks.

**Area 6:** Continue roadworks and drainage, elevated guideway segment fabrication and erection, shafts, pile caps, piers, columns, east/west supports and ramps, OCS foundations, Misericordia Station substructure. Utility complex site grading. West Edmonton Mall Station column pour. Start Aldergrove Stop construction.

**Area 7:** Install concrete girders for AHD bridge.

Complete east approach pier columns, pier caps and bearings. Continue east abutment construction. Continue concrete retaining wall, MSE (mechanically stabilized earth) wall, west approach ramp and support and pile caps.

**Area 8:** Continue roofing and insulated metal wall panels for Lewis Farms Storage Facility.

**Area 9:** Continue grade beams, structural steel installation, wall panels and roof decking, pipeline crossing bridge piles, yard drainage activities, foundation beams for AVIS (Automatic Vehicle Inspection System) building. OCS foundations.

**LRVs:** Final Design Review continues.