

PERFORMANCE

This dashboard provides an overview of progress and performance of the Valley Line West (VLW) LRT Project and a summary of work completed by Marigold Infrastructure Partners (MIP) and the City of Edmonton (City).

CUMULATIVE PERFORMANCE	NOTES
COST PERFORMANCE <i>Measures the cost efficiency of the project</i>	Current cost performance is good. The project remains on budget.
SCHEDULE PERFORMANCE <i>Measures the schedule status of the project</i>	As of the end of Q3, construction progress as measured by the independent certifier is 28.6%.
SCOPE PERFORMANCE <i>Measures the current status of scope changes compared to the baseline scope</i>	There have been no significant changes to either MIP's scope of work or other City-contracted scopes of work.
PUBLIC COMMUNICATIONS <i>Most common public inquiries for the period</i>	The most common public inquiries for the period are related to construction, traffic and access impacts.

RECENT PROGRESS - SUMMARY

MIP Work in Q3:

During Q3 2024, design and construction activities progressed across the VLW LRT alignment. Roadworks and drainage installations were ongoing in **Areas 1-6** and **8**. In **Area 8**, trackwork continued at the Lewis Farms Storage Facility (Photo A) along with clerestory glazing, elevator shaft installation and completion of exterior cladding on the north face. In **Area 7**, work on the Anthony Henday Drive (AHD) LRT bridge included west and east approach pile completion, approach slabs, piers, girders and retaining walls. In **Area 6**, MIP continued work on the elevated guideway (EG) (Photo C) with rebar installation ongoing on both approach ramps. Utility complex piling was also underway in the area (Photo B). Roadwork, including sidewalk construction continued in **Area 5** (Photo D). In **Area 3**, Stony Plain Road (SPR) bridge (Photo E) east approach moment slabs rebar and formwork were ongoing, west approach slab driving lanes were poured, traffic barrier rebar was underway. In **Area 9**, MIP continued construction on the Gerry Wright Operations & Maintenance Facility (OMF-B), including TPO roofing (Photo F), clerestory window glazing, subgrade shaping, IMP panel installation and OMF-A tie in work.

Hyundai Rotem Company (HRC) work in Q3:

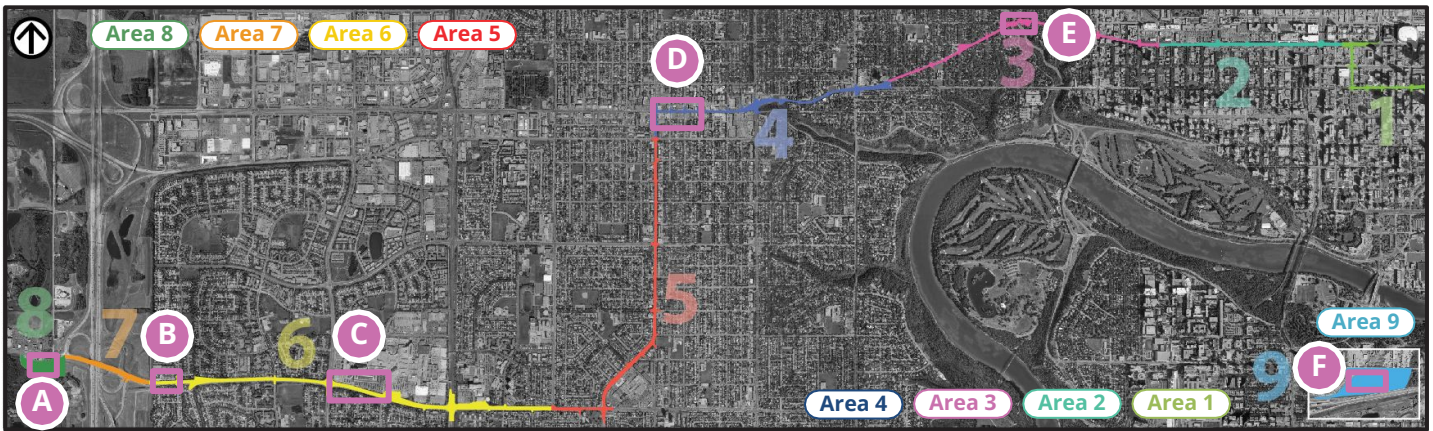
Final Design Review (FDR) for the light rail vehicle (LRV) continued throughout Q3. First Article Inspections continued on several components in Q3 and manufacturing continued.



Area 8 - Lewis Farms Storage Facility Trackwork



Area 6 - 87 Ave/189 St Utility Complex Piling



Area 6 - Elevated Guideway Progress



Area 4 - West Jasper Place Sidewalk Construction



Area 3 - Stony Plain Road Bridge Rebar & Formwork



Area 9 - Gerry Wright OMF-B Roof & Wall Insulation

MILESTONES

AREA	COMPLETED MILESTONES	COMPLETION DATE
All	Piling on all Utility Complexes (UC) completed	July 2024
3 & 6	Track slab first pour completed	September 2024
7	East & west approach pile caps completed	September 2024
8	Exterior cladding on Lewis Farms Storage Facility north face completed	September 2024
AREA	UPCOMING MILESTONES	FORECASTED DATE
3, 4 & 6	Install the first Traction Power Substations (TPSS) at a Utility Complexes	Q4 2024
9	Commence concrete floor slab in OMF Building B LRV Storage Area	Q4 2024
LRV	First Article Inspection (FAI) on 1st LRV Build Complete (prior to testing)	Dec 2024

KEY ACTIVITY 3-MONTH LOOK-AHEAD

The highlights correspond to the areas of the alignment on the map above.

Areas 1- 6: Continue roadworks, drainage installations, Utility Complex (UC) construction.

Area 1: Overhead Catenary System (OCS) foundation works starts. Catchbasin relocation works and manhole abandonment continues.

Area 3: Continue Glenora and 124 Street Stops construction. SPR bridge abutments, track slab works.

Area 4: Continue Grovenor/142 Street Stop construction.

Area 5: Continue Meadowlark and Glenwood/Sherwood Stops construction.

Area 6: Continue OCS foundations, EG segment fabrication and erection. West Edmonton Mall (WEM) Station work including straddle beams, girders and superstructure. EG east and west approach ramp construction. Misericordia Station girders and superstructure.

Area 7: Start AHD bridge east approach CIP girder & diaphragm, sidewalk & railing, walkway & curbs. East approach abutment construction & slab pour. West approach track slab rebar abutment & slab pour. Main span deck pours/cure, MSE wall construction, OCS foundations.

Area 8: Continue installing Lewis Farms Storage Facility insulated metal panels, slab rough-ins and pour concrete for LRV area and office area, roofing construction. Duct bank work. Continue Lewis Farms Stop and Park & Ride construction, track work and OCS foundations.

Area 9: At OMF-B continue grade beam upstands, roofing, steel erection, wall cladding, metal decking, AVIS building, bridge works, 2nd and 3rd floor construction and slab pours, OCS foundations, elevator shafts and stairwells.

LRVs: Final Design Review #2 milestone is expected in Q4. First Article Inspections will occur throughout the period.