

PERFORMANCE

This dashboard provides an overview of progress and performance of the Valley Line West (VLW) LRT Project and a summary of work completed by Marigold Infrastructure Partners (MIP) and the City of Edmonton (City).

CUMULATIVE PERFORMANCE

NOTES

COST PERFORMANCE

Measures the cost efficiency of the project

Current cost performance is good. The project remains on budget.

SCHEDULE PERFORMANCE

Measures the schedule status of the project

As of the end of Q2, construction progress as measured by the independent certifier is 20.8%.

SCOPE PERFORMANCE

Measures the current status of scope changes compared to the baseline scope

There have been no significant changes to either MIP's scope of work or other City-contracted scopes of work.

PUBLIC COMMUNICATIONS

Most common public inquiries for the period

The most common public inquiries for the period are related to construction, traffic and access impacts.

RECENT PROGRESS - SUMMARY

MIP work in Q2:

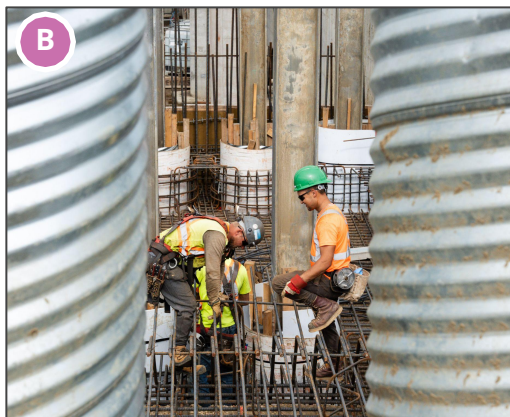
During Q2 2024, design and construction activities progressed across the VLW LRT alignment. Drainage and roadworks were ongoing in Areas 1-6. In **Area 8**, work continued on the Lewis Farms Storage Facility (Photo A) including concrete block work, wall panel installation and grade beam formwork. In **Area 7**, work on the Anthony Henday Drive (AHD) bridge (Photo B) included slab rebar installation on the east approach. In **Area 6**, MIP continued work on the elevated guideway (Photo C) with rebar installation on both approach ramps nearing completion. As of June, 44 of 46 elevated guideway Y-piers have been completed, with the last two forecast to be completed mid-July. Roadwork, including subgrade preparation, concrete formwork and pouring, and paving continued in **Area 5** (Photo D). In **Area 3**, backfilling and compaction work at both approaches to the Stony Plain Road (SPR) bridge was ongoing (Photo E). In **Area 9**, MIP continued construction on the Gerry Wright Operations & Maintenance Facility (OMF-B) (Photo F), including roofing, under-slab preparation work, duct banks and fill work at the pipeline crossings.

Hyundai Rotem Company (HRC) work in Q2:

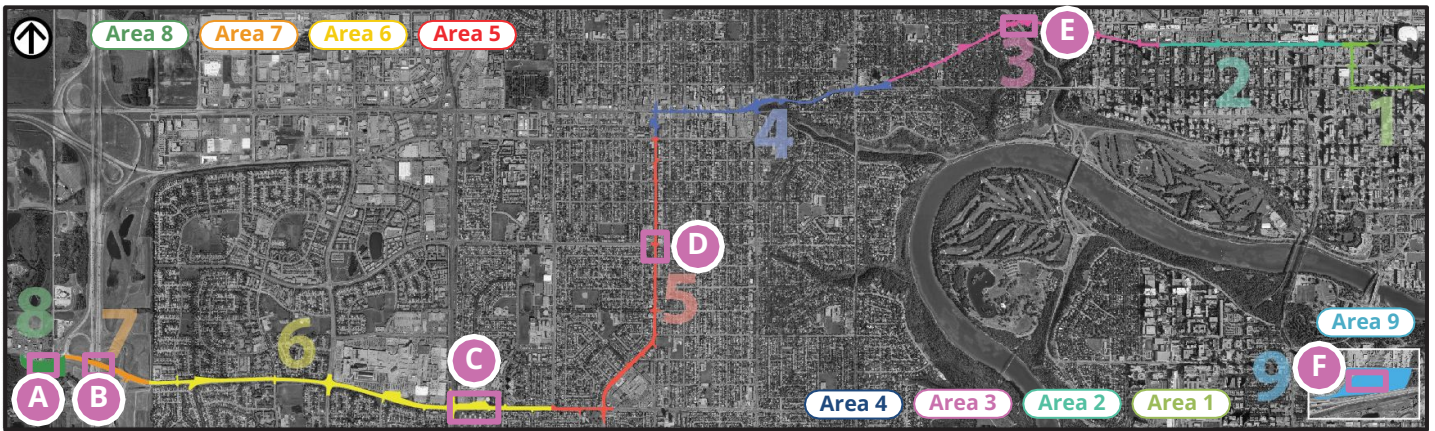
Final Design Review (FDR) for the Stage 2 light rail vehicle (LRV) continued throughout Q2. FDR #1 Milestones were complete in Q2. First Article Inspections started on several components in Q2 and manufacturing continued.



Area 8 - Lewis Farms Storage Facility



Area 7 - Anthony Henday Drive Bridge base slab rebar installation



Area 6 - Elevated Guideway Ramps



Area 5 - 156 Street Roadworks



Area 3 - Stony Plain Road Bridge



Area 9 - Gerry Wright OMF-B

MILESTONES

AREA	COMPLETED MILESTONES	COMPLETION DATE
3	Glenora Stop traffic barrier poured, asphalt paved	June 2024
9	Gerry Wright OMF-B: All primary steel erection complete	May 2024
LRV	First Article Inspections of LRV components started	April 2024
LRV	LRV FDR #1 Milestones complete	May 2024
AREA	UPCOMING MILESTONES	FORECASTED DATE
All	Piling complete on all Utility Complexes (UC)	Q3 2024
6	All elevated guideway Y-piers constructed	Q3 2024
4	First embedded track slab constructed	Q3 2024

KEY ACTIVITY 3-MONTH LOOK-AHEAD

The highlights correspond to the areas of the alignment on the map above.

All Areas: Drainage and roadworks continued.

Area 1: Overhead catenary system (OCS) foundation, Norquest Stop, utility complex (UC) work.

Area 2: Start subgrade for Wihkwêntôwin ᐃᐱᐱᐱᐱᐱᐱ/116 Street and MacEwan Arts/112 Street Stops.

Area 3: Continue Glenora and 124 Street Stops construction. Start track slab construction.

Area 4: Continue Grovenor/142 Street Stop, UC works, and start OCS foundations.

Area 5: Start UC piling and drainage. Continue Meadowlark and Glenwood/Sherwood Stops.

Area 6: Continue elevated guideway segment fabrication and erection, piers, columns, abutments and ramps, OCS foundations, Misericordia Station substructure, WEM Station straddle beams. Continue Aldergrove Stop

construction and UC work. Start track slab construction.

Area 7: Complete AHD bridge east approach caps, pier columns, bearings. Continue east abutment slab pour, concrete retaining wall, west approach ramp, abutment, pile caps, and track slab.

Area 8: At Lewis Farms Storage Facility continue roofing, exterior doors and windows installation, insulated metal panels, slab rough-ins. Continue OCS foundations, work at Lewis Farms Stop, work on the parking lot and installation of duct banks. Start track slab construction.

Area 9: For the OMF continue grade beam upstands, grade beams, slab work, metal decking, roofing, yard drainage activities, AVIS building works, yard bridge works, 2nd and 3rd floor slab pours, OCS foundations, duct bank install, cladding, elevator shafts, and stairwells.

LRVs: FDR for FDR #2 Milestone continues. First Article Inspections will be occurring throughout the period.