

2024 NEIGHBOURHOOD STUDY AREAS

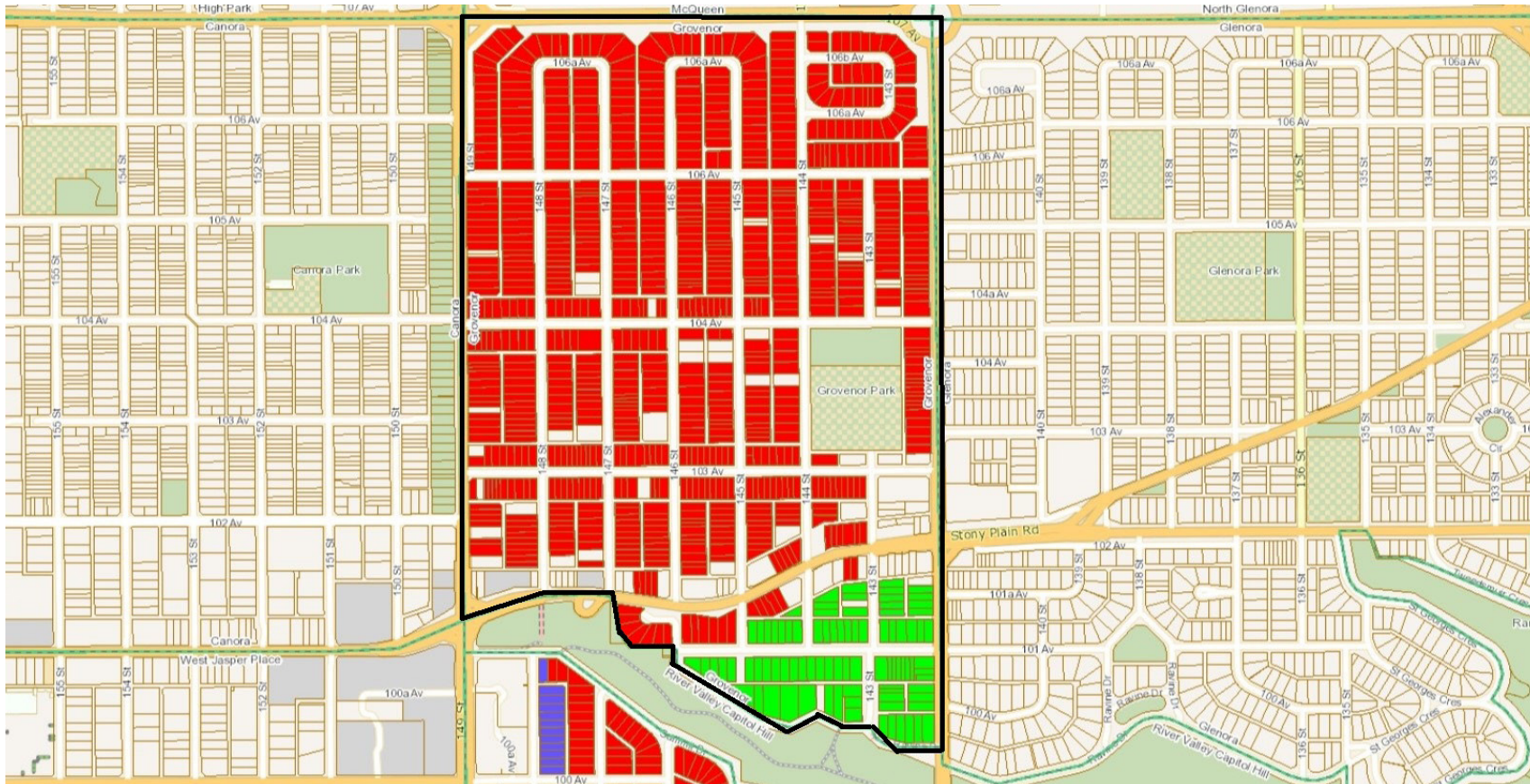
RESIDENTIAL

INDEX

| Study Area No. | Neighbourhood | Page No. |
|-----------------------|--|-----------------|
| 2101 | Grovenor, Crestwood, Parkview, Laurier Heights | 3–6 |
| 2102 | Grovenor, Crestwood, Parkview, Laurier Heights | 3–6 |
| 2103 | Athlone | 7 |
| 2104 | Terwillegar Towne | 8 |
| 2107 | Summerside | 9 |
| 2108 | Summerside | 9 |
| 2109 | Summerside | 9 |
| 2110 | Summerside | 9 |
| 2112 | Donsdale | 10 |
| 2129 | Aspen Gardens, Westbrook Estates | 11 |
| 2130 | Westbrook Estates | 11 |
| 2210 | Mactaggart | 13 |
| 2500 | Belgravia | 14 |
| 3004 | Glenora | 15 |
| 3014 | Glenora | 15 |
| 3019 | Terwillegar Towne, South Terwillegar | 8 |
| 3023 | Glenora | 15 |
| 3040 | Westmount | 16 |
| 3090 | Rundle Heights | 17 |
| 3101 | Strathcona | 18 |
| 3200 | Wedgewood Heights | 10 |
| 3201 | Wedgewood Heights, Cameron Heights | 10 |
| 3203 | Highlands, Capilano, Gold Bar | 19 |
| 3204 | Ambleside | 20 |
| 3205 | Windsor Park | 21 |
| 3206 | Ramsay Heights | 22 |
| 3208 | Bellevue, Highlands, Beverly Heights | 23–25 |
| 3209 | Windermere | 26–28 |
| 3212 | Rhatigan Ridge | 29–30 |
| 3213 | South Terwillegar | 13 |

| | | |
|------|----------------------------------|-------|
| 3217 | Rio Terrace and Quesnell Heights | 31 |
| 3220 | Windermere | 26–27 |
| 3221 | Windermere | 27 |
| 3222 | Windermere | 31 |
| 3223 | Belgravia | 14 |
| 3224 | Brookside | 32 |
| 3225 | Rhatigan Ridge | 29–30 |
| 3226 | Henderson Estates | 29–30 |
| 3227 | Rio Terrace | 33 |
| 3228 | Oleskiw | 34 |
| 3229 | Oleskiw | 34 |
| 3230 | Cameron Heights | 35 |
| 3231 | Forest Heights | 36 |
| 3232 | Ottewell | 37 |
| 3233 | McKernan | 38 |
| 3234 | Suder Greens | 39 |
| 3235 | Eastwood | 40 |
| 3236 | Magrath Heights | 41 |
| 3237 | The Hamptons | 42 |
| 3238 | Belle Rive, Eaux Claires | 43 |
| 3239 | King Edward Park | 44 |
| 3242 | Kernohan | 45 |
| 3243 | Pleasantview | 46 |
| 3244 | Westridge | 47 |
| 3246 | Homesteader, Overlanders | 48 |
| 3247 | Laurel | 49 |
| 3250 | Crestwood, Parkview | 4–5 |
| 3251 | Prince Rupert | 50 |
| 3252 | Bearspaw | 51 |
| 3253 | Tompkins Park | 8 |
| 3254 | Summerside | 9 |
| 3255 | Mactaggart | 13 |
| 3256 | Strathcona | 18 |
| 3257 | Strathcona | 18 |
| 4001 | Magrath Heights | 41 |

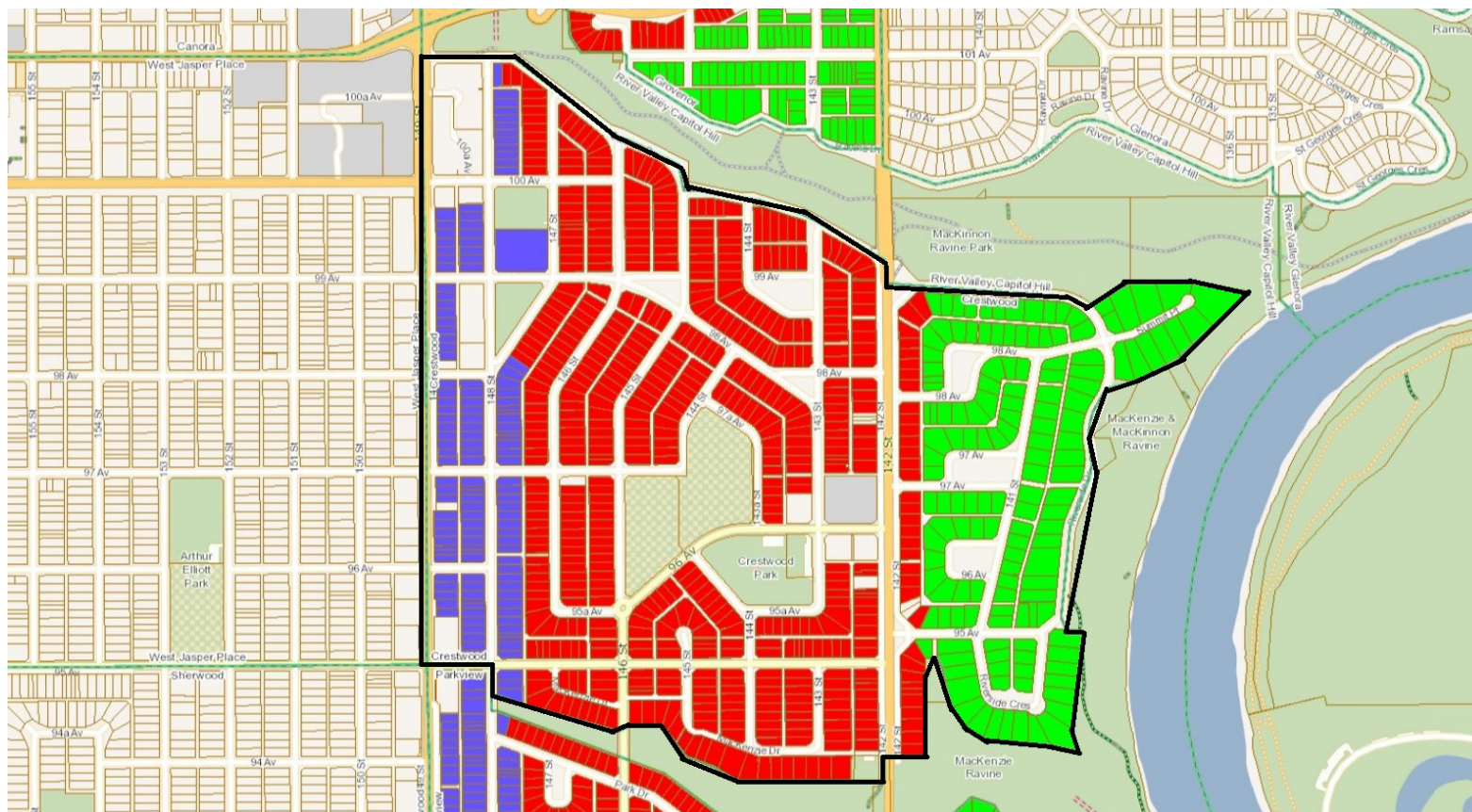
Study Area 2101/2102: Grovenor, Crestwood, Parkview and Laurier Heights






- Grovenor North (2101)
- Grovenor South (2102)
- 149 Street East (3250)

The information provided by this map is for reference purpose only. The City of Edmonton disclaims any liability for the use of this map. This map may not be published, broadcast, redrawn or redistributed in whole or in part without the express written permission of the City of Edmonton, Financial and Corporate Services Department. All rights reserved. Copyright © 2021 The City of Edmonton

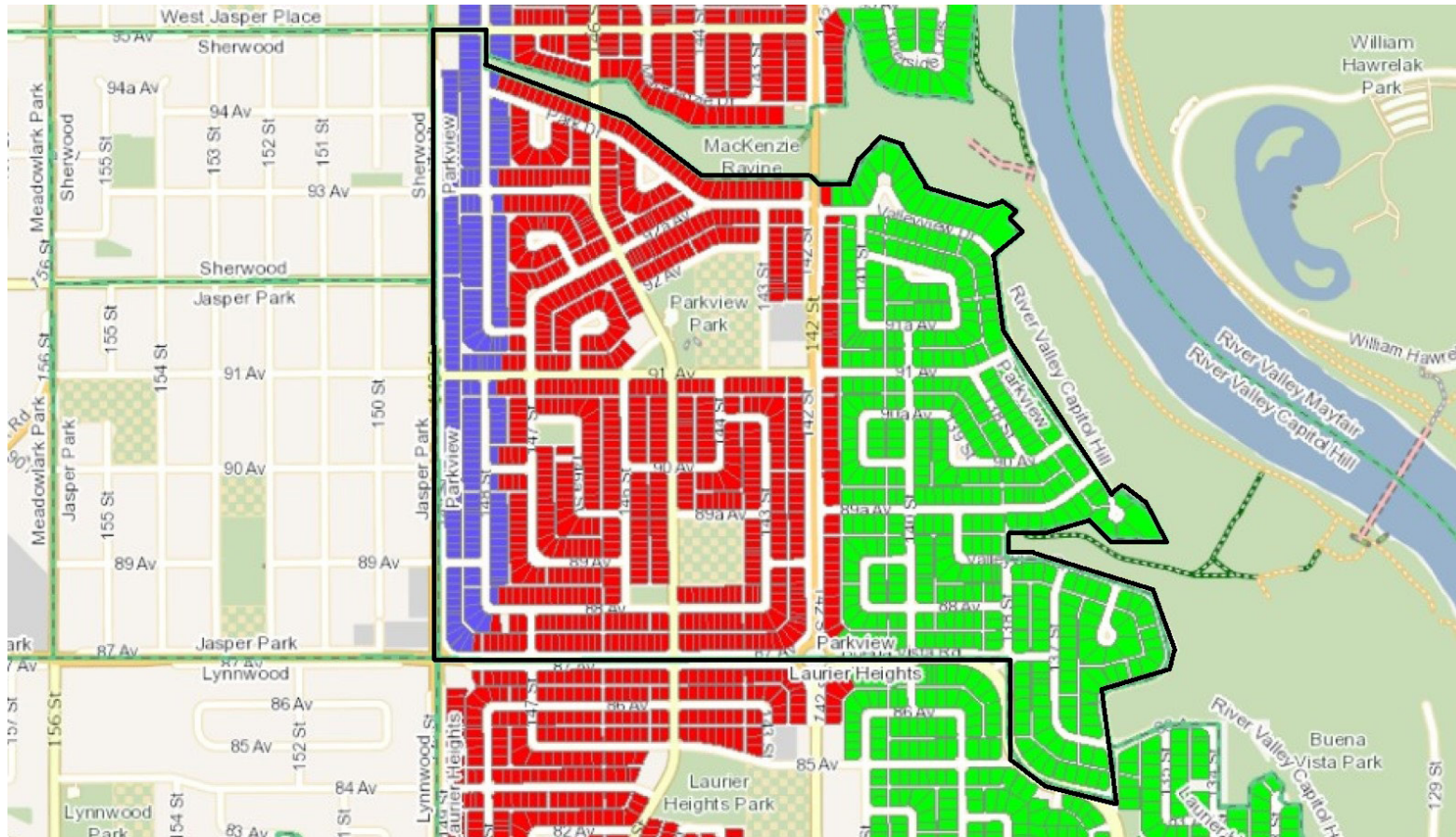
Study Area 2101/2102/3250: Grovenor, Crestwood, Parkview and Laurier Heights

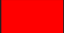




-  Crestwood West (2101)
-  Crestwood East (2102)
-  149 Street East (3250)

The information provided by this map is for reference purpose only. The City of Edmonton disclaims any liability for the use of this map. This map may not be published, broadcast, redrawn or redistributed in whole or in part without the express written permission of the City of Edmonton, Financial and Corporate Services Department. All rights reserved. Copyright © 2021 The City of Edmonton

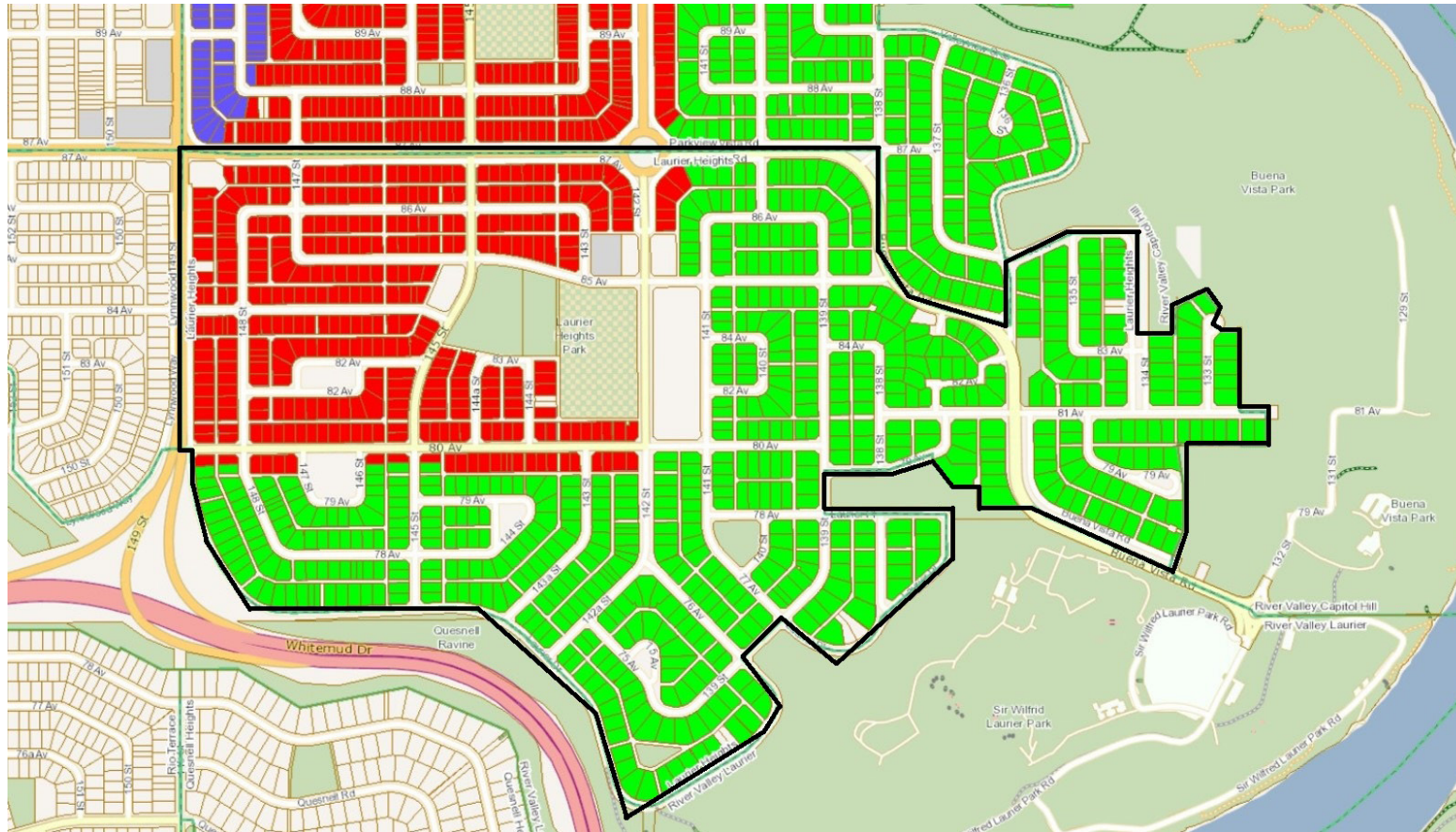
Study Area 2101/2102/3250: Grovenor, Crestwood, Parkview and Laurier Heights






-  Parkview West (2101)
-  Parkview East (2102)
-  149 Street East (3250)

The information provided by this map is for reference purpose only. The City of Edmonton disclaims any liability for the use of this map. This map may not be published, broadcast, redrawn or redistributed in whole or in part without the express written permission of the City of Edmonton, Financial and Corporate Services Department. All rights reserved. Copyright © 2021 The City of Edmonton

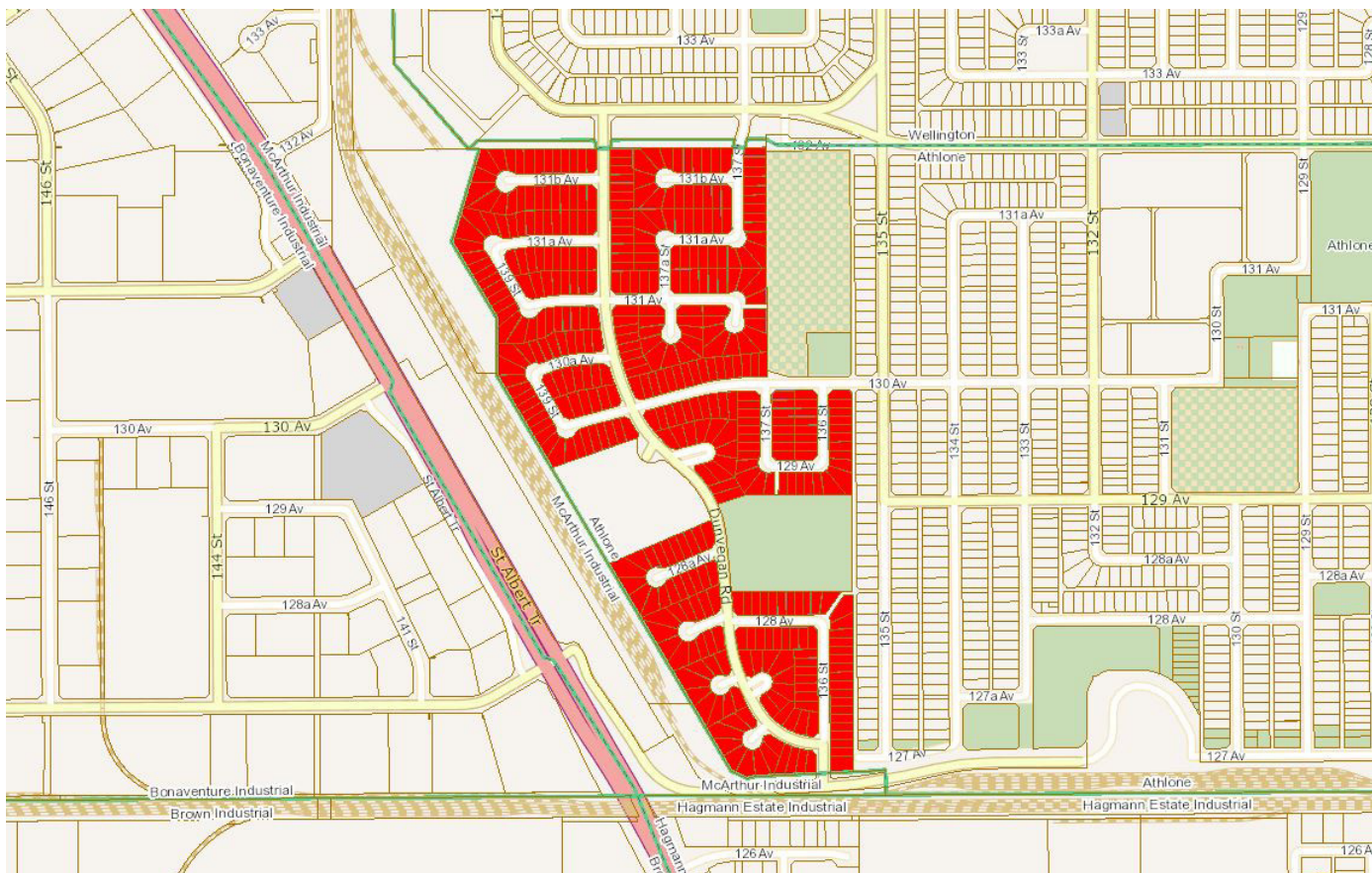
Study Area 2101/2102: Grovenor, Crestwood, Parkview and Laurier Heights



-  Laurier Heights North/West (2101)
-  Laurier Heights South/East (2102)
-  149 Street East (3250)

The information provided by this map is for reference purpose only. The City of Edmonton disclaims any liability for the use of this map. This map may not be published, broadcast, redrawn or redistributed in whole or in part without the express written permission of the City of Edmonton, Financial and Corporate Services Department. All rights reserved. Copyright © 2021 The City of Edmonton

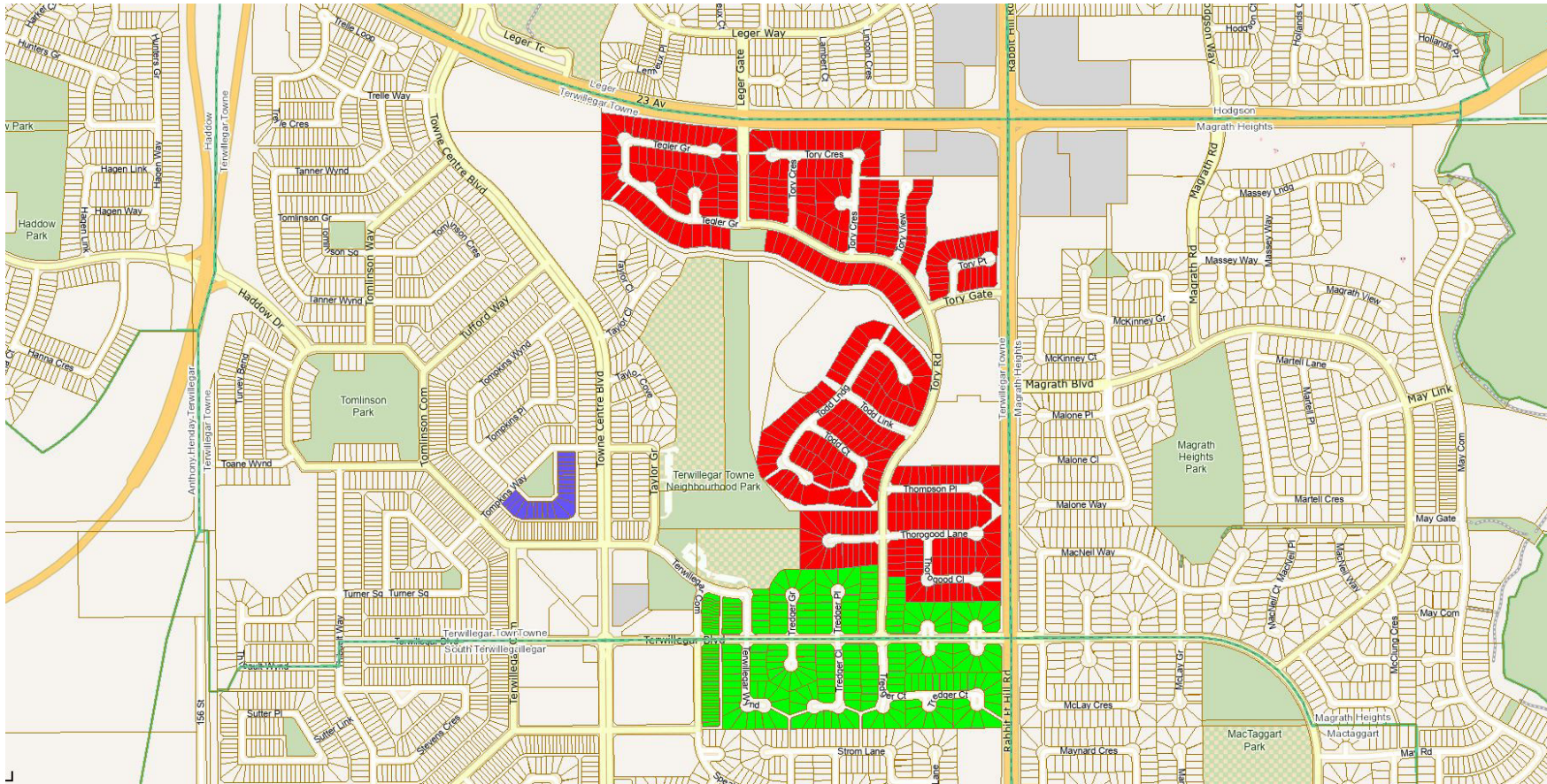
Study Area 2103: Athlone



 Athlone West (2103)

The information provided by this map is for reference purpose only. The City of Edmonton disclaims any liability for the use of this map. This map may not be published, broadcast, redrawn or redistributed in whole or in part without the express written permission of the City of Edmonton, Financial and Corporate Services Department. All rights reserved. Copyright © 2021 The City of Edmonton

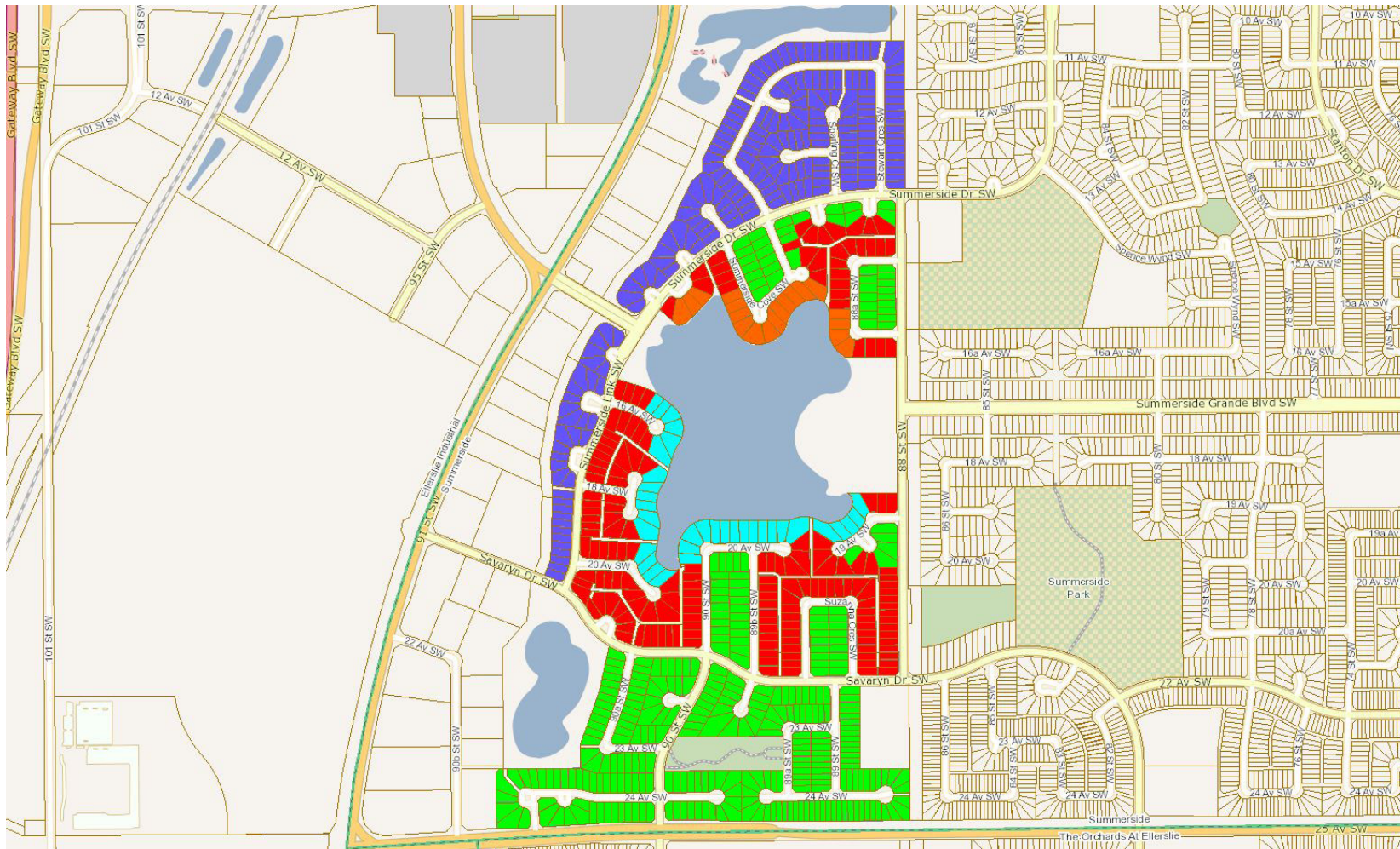
Study Area 2104/3019/3253: Terwillegar Towne, South Terwillegar



- Terwillegar Gardens North (2104)
- Tompkins Park (3253)
- Terwillegar Gardens South (3019)

The information provided by this map is for reference purpose only. The City of Edmonton disclaims any liability for the use of this map. This map may not be published, broadcast, redrawn or redistributed in whole or in part without the express written permission of the City of Edmonton, Financial and Corporate Services Department. All rights reserved. Copyright © 2021 The City of Edmonton

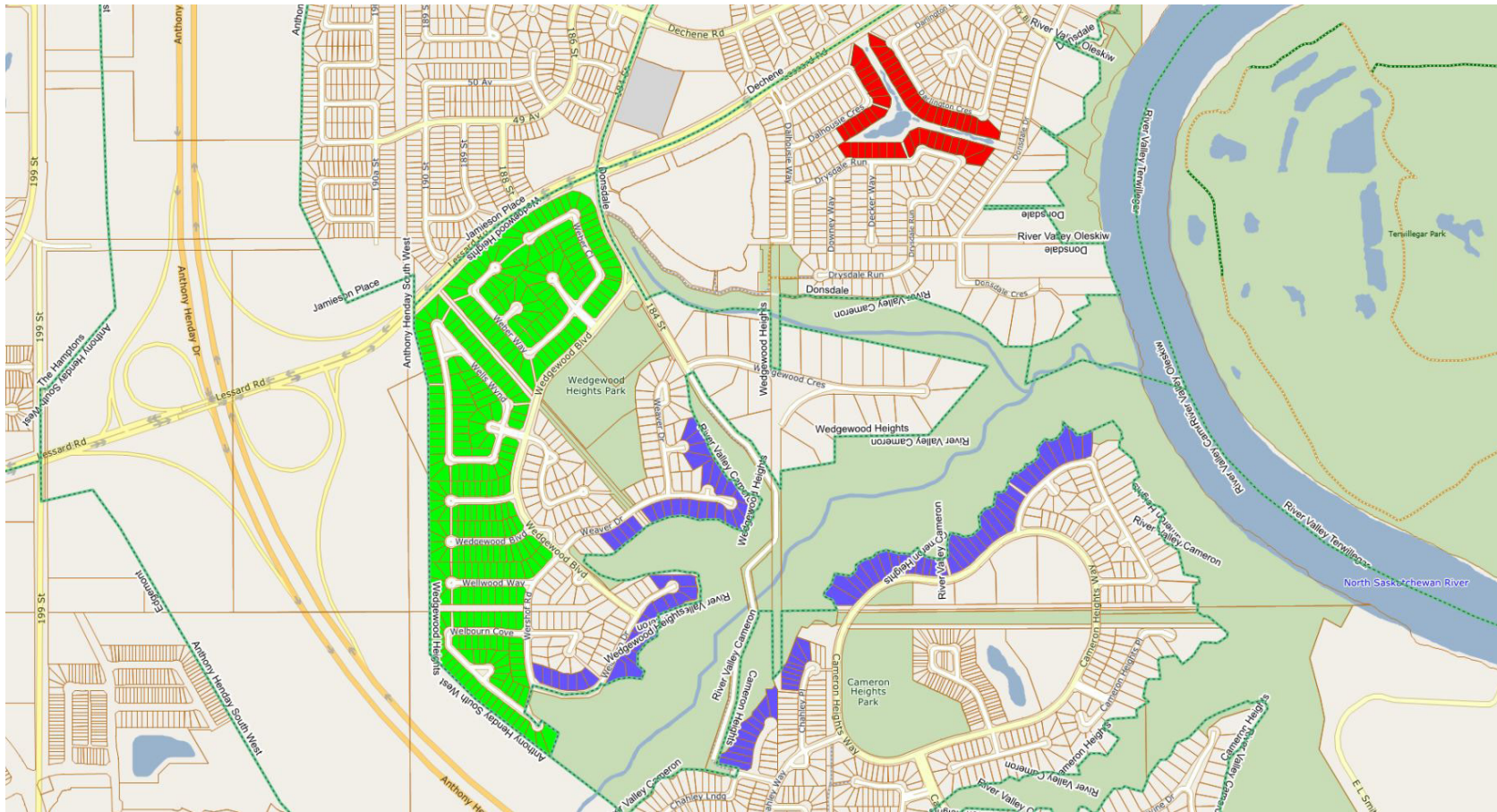
Study Area 2107/2108/2109/2110/3254: Summerside






- Summerside Walkway (2107)
- Summerside Lake South (2109)
- Summerside Lake North (3254)
- Summerside Cove (2108)
- Summerside North (2110)

The information provided by this map is for reference purpose only. The City of Edmonton disclaims any liability for the use of this map. This map may not be published, broadcast, redrawn or redistributed in whole or in part without the express written permission of the City of Edmonton, Financial and Corporate Services Department. All rights reserved. Copyright © 2021 The City of Edmonton

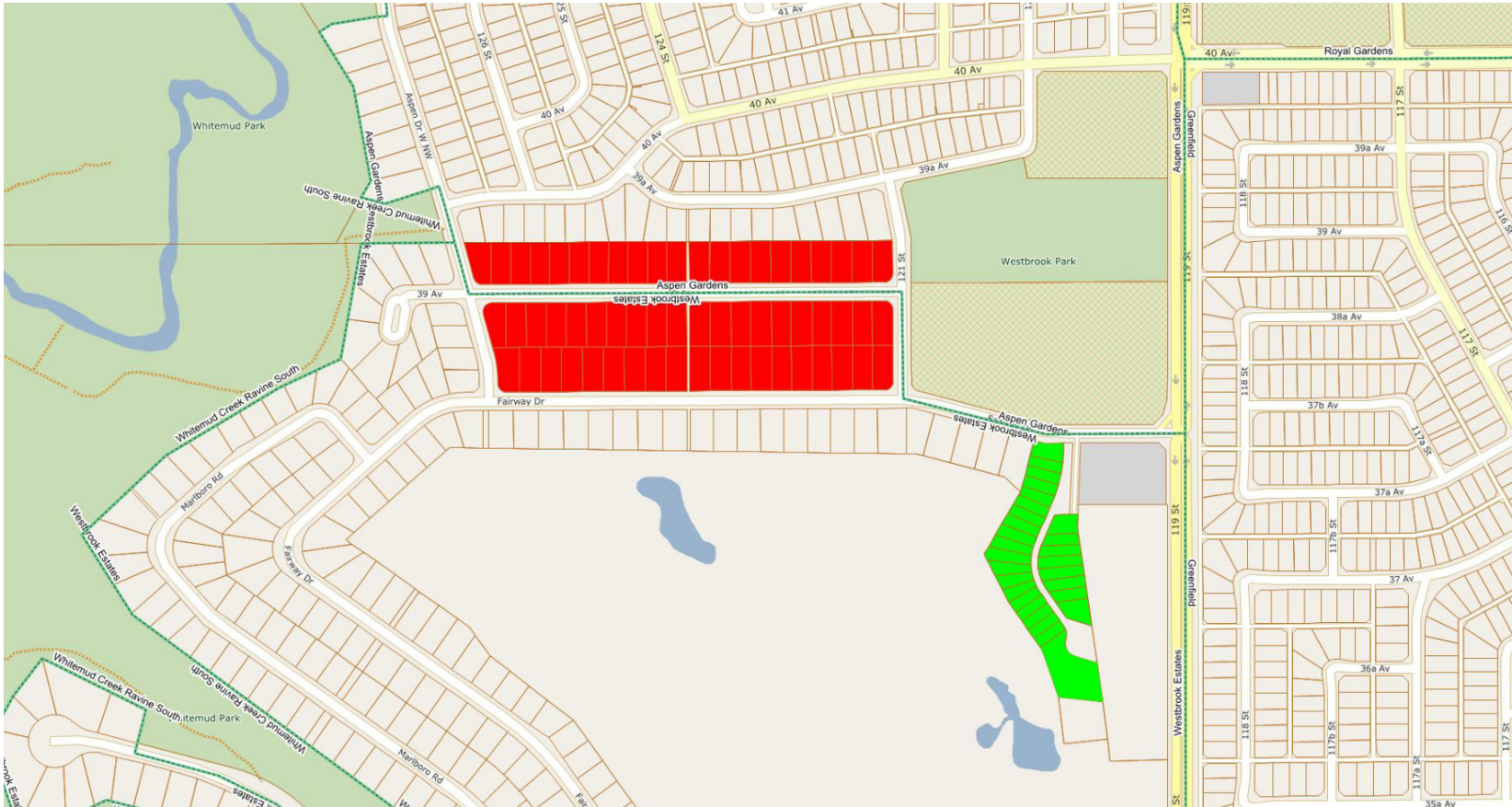
Study Area 2112/3200/3201: Donsdale, Wedgewood Heights, Cameron Heights





-  Donsdale Creek (2112)
-  Wedgewood Heights West (3200)
-  Cameron Heights/Wedgewood Ravine (3201)

The information provided by this map is for reference purpose only. The City of Edmonton disclaims any liability for the use of this map. This map may not be published, broadcast, redrawn or redistributed in whole or in part without the express written permission of the City of Edmonton, Financial and Corporate Services Department. All rights reserved. Copyright © 2021 The City of Edmonton

Study Area 2129/2130: Aspen Gardens, Westbrook Estates




-  Westbrook / Aspen Gardens Split (2129)
-  Ironwood (2130)

The information provided by this map is for reference purpose only. The City of Edmonton disclaims any liability for the use of this map. This map may not be published, broadcast, redrawn or redistributed in whole or in part without the express written permission of the City of Edmonton, Financial and Corporate Services Department. All rights reserved. Copyright © 2021 The City of Edmonton

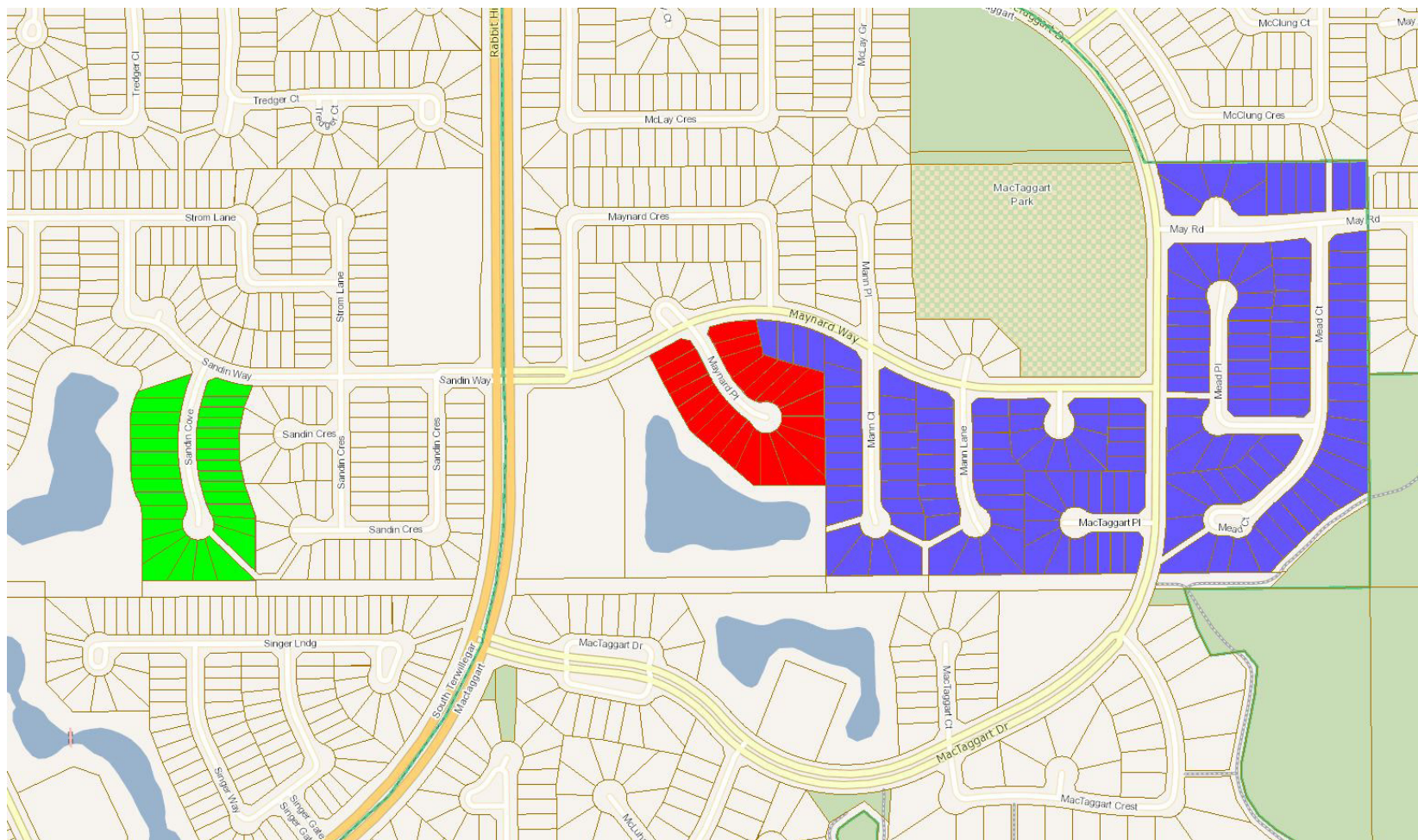
Study Area 2175: Riverdale



 Riverdale (2175)

The information provided by this map is for reference purpose only. The City of Edmonton disclaims any liability for the use of this map. This map may not be published, broadcast, redrawn or redistributed in whole or in part without the express written permission of the City of Edmonton, Financial and Corporate Services Department. All rights reserved. Copyright © 2021 The City of Edmonton

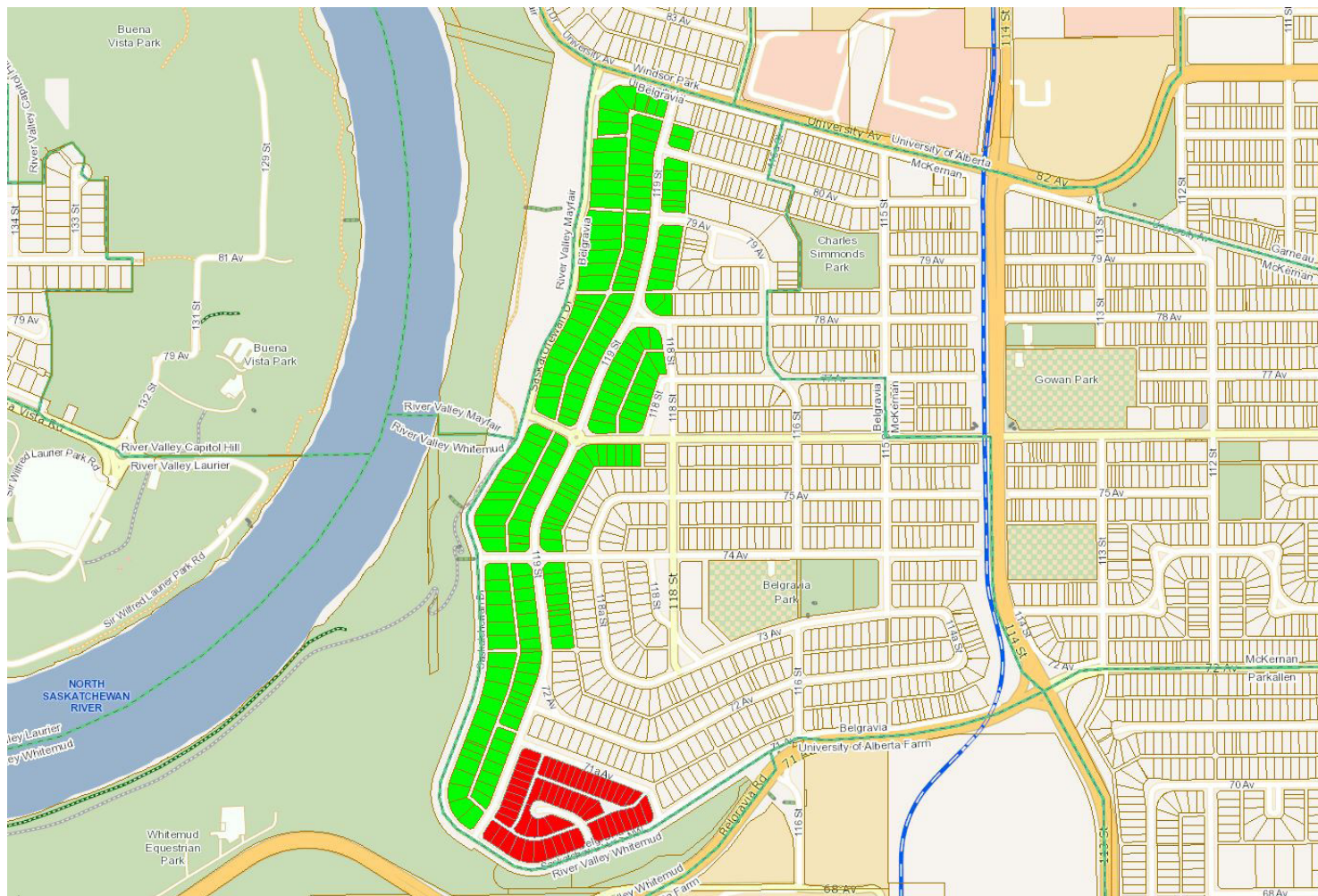
Study Area 2210/3213/3255: Mactaggart and South Terwillegar





-  Maynard Point South (2210)
-  Sandin Cove (3213)
-  Mactaggart Northeast (3255)

The information provided by this map is for reference purpose only. The City of Edmonton disclaims any liability for the use of this map. This map may not be published, broadcast, redrawn or redistributed in whole or in part without the express written permission of the City of Edmonton, Financial and Corporate Services Department. All rights reserved. Copyright © 2021 The City of Edmonton

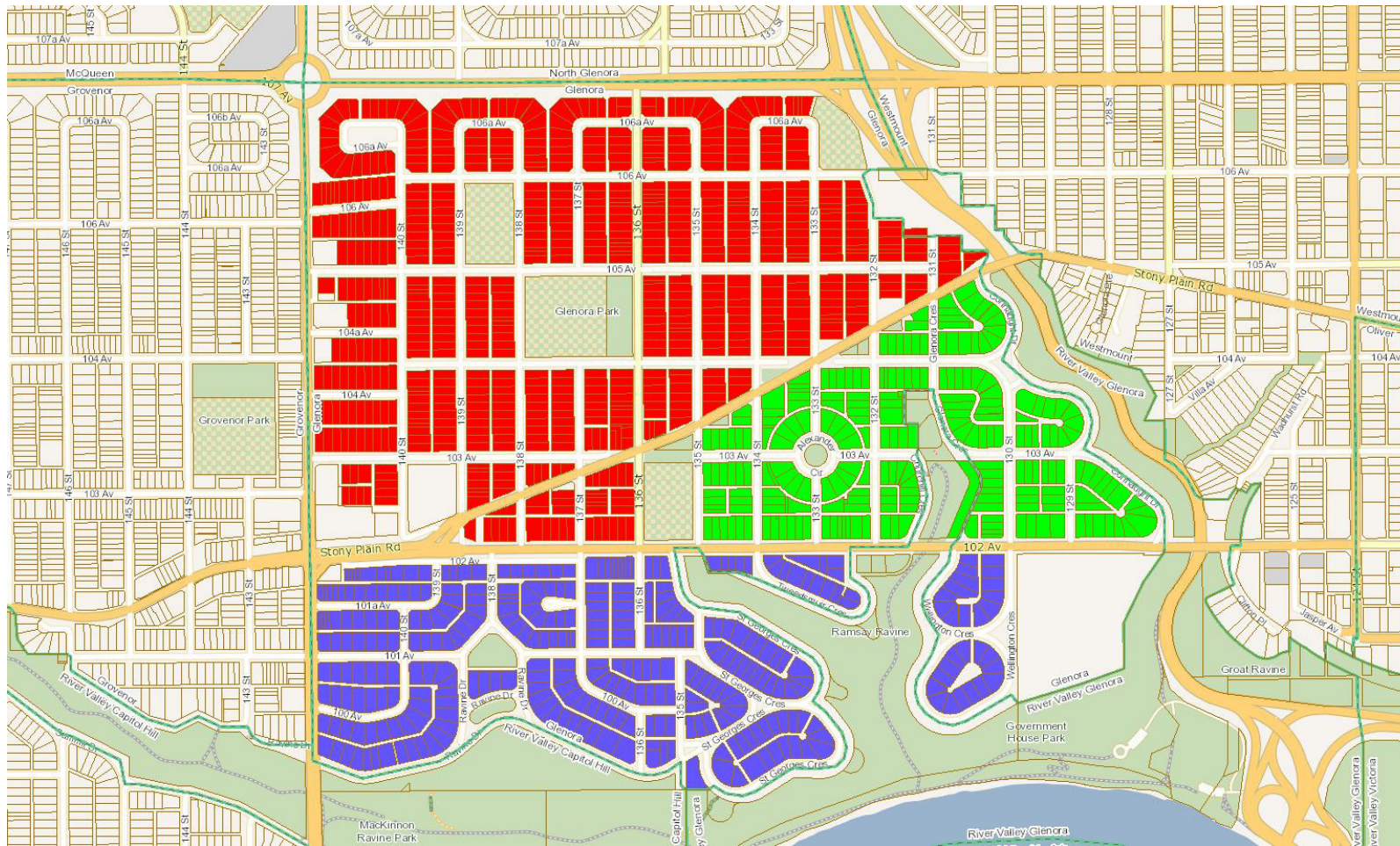
Study Area 2500/3223: Belgravia



-  Belgravia South (2500)
-  Belgravia West (3223)

The information provided by this map is for reference purpose only. The City of Edmonton disclaims any liability for the use of this map. This map may not be published, broadcast, redrawn or redistributed in whole or in part without the express written permission of the City of Edmonton, Financial and Corporate Services Department. All rights reserved. Copyright © 2021 The City of Edmonton

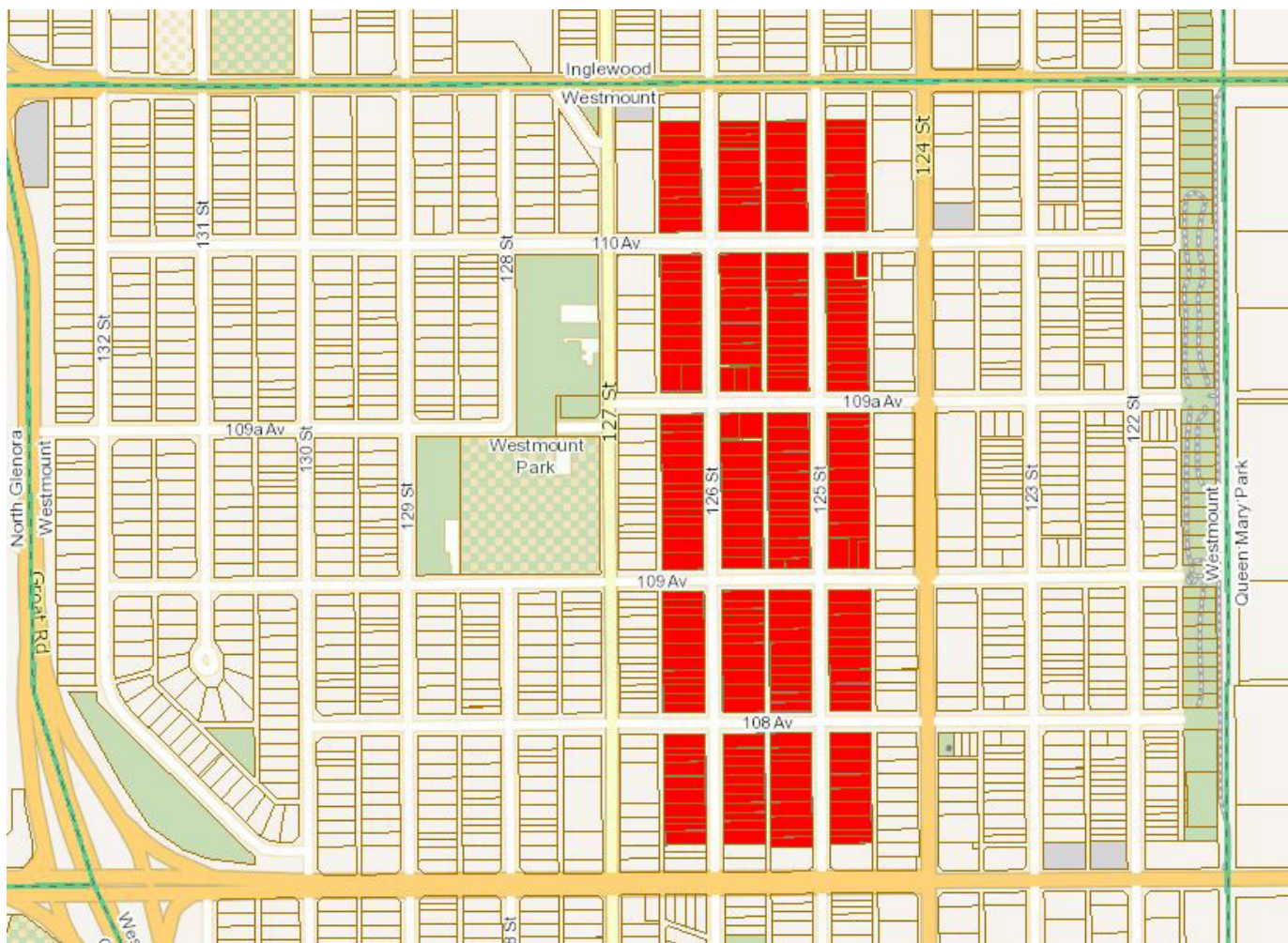
Study Area 3004/3014/3023: Glenora




- Glenora North (3004)
- Glenora South (3023)
- Glenora East (3014)

The information provided by this map is for reference purpose only. The City of Edmonton disclaims any liability for the use of this map. This map may not be published, broadcast, redrawn or redistributed in whole or in part without the express written permission of the City of Edmonton, Financial and Corporate Services Department. All rights reserved. Copyright © 2021 The City of Edmonton

Study Area 3040: Westmount



 Westmount Heritage (3040)

The information provided by this map is for reference purpose only. The City of Edmonton disclaims any liability for the use of this map. This map may not be published, broadcast, redrawn or redistributed in whole or in part without the express written permission of the City of Edmonton, Financial and Corporate Services Department. All rights reserved. Copyright © 2021 The City of Edmonton

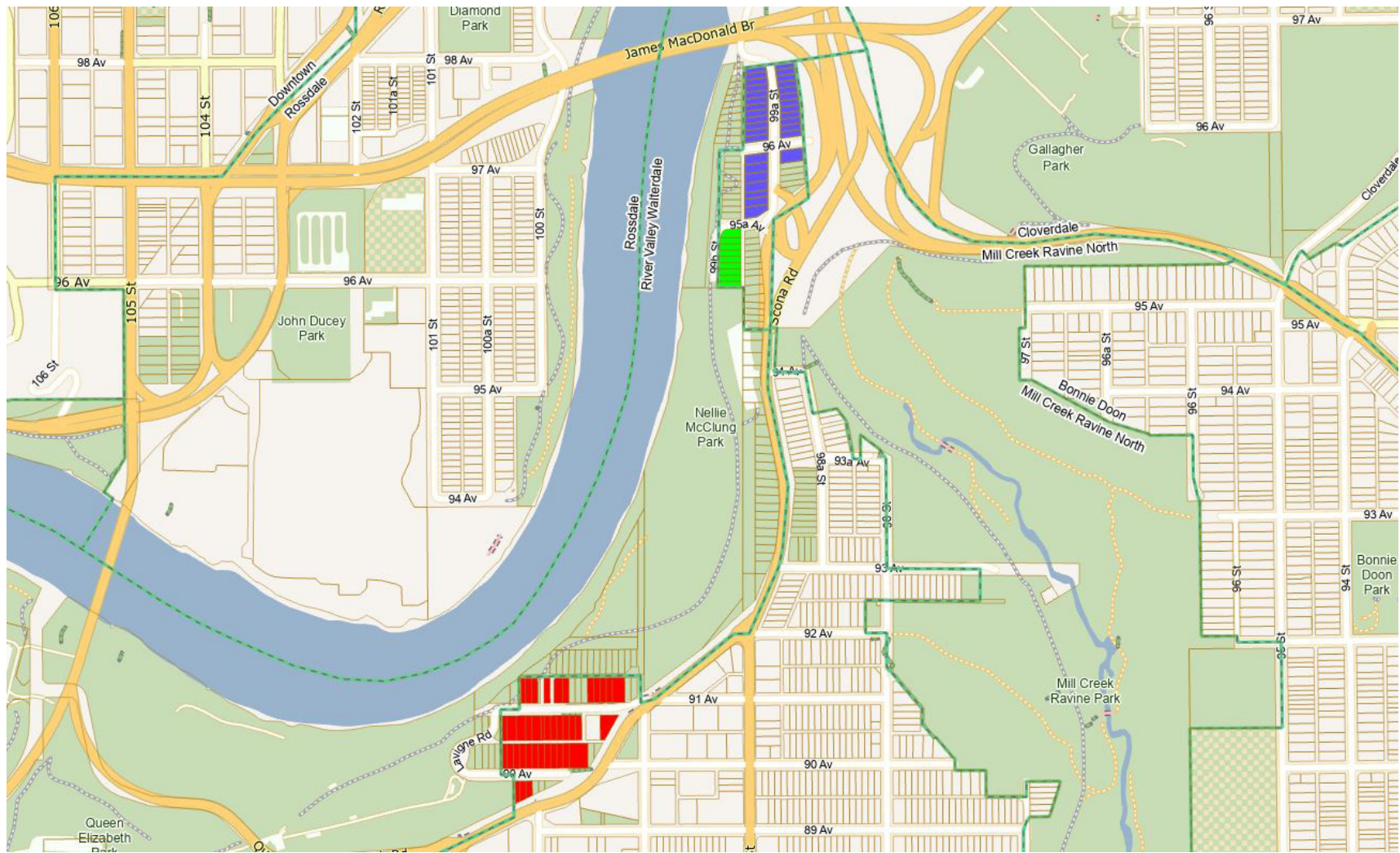
Study Area 3090: Rundle Heights



 Rundle South (3090)

The information provided by this map is for reference purpose only. The City of Edmonton disclaims any liability for the use of this map. This map may not be published, broadcast, redrawn or redistributed in whole or in part without the express written permission of the City of Edmonton, Financial and Corporate Services Department. All rights reserved. Copyright © 2021 The City of Edmonton

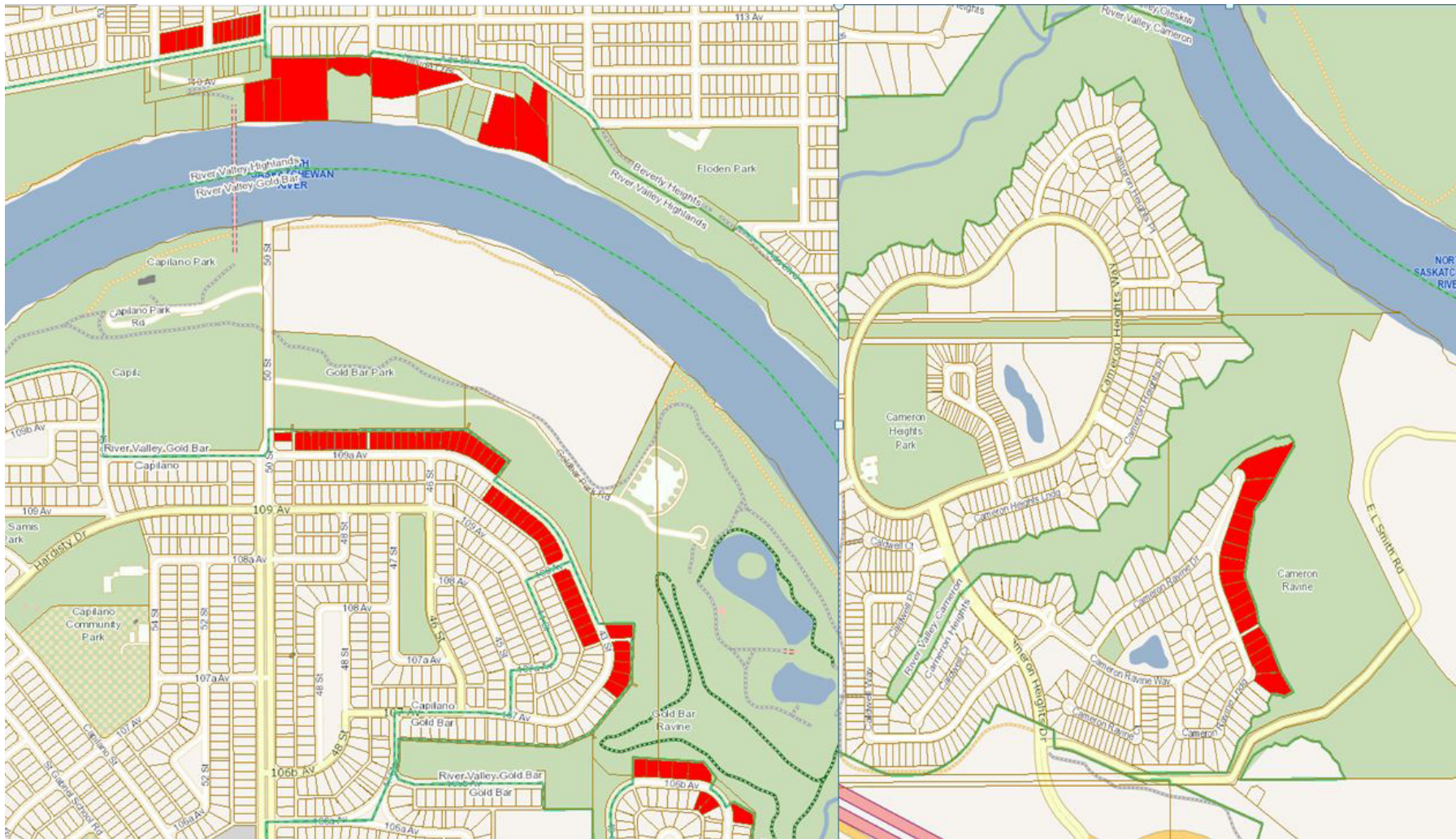
Study Area 3101/3256/3257: Strathcona



- Skunk Hollow (3101)
- 99b Street (3256)
- 99a Street (3257)

The information provided by this map is for reference purpose only. The City of Edmonton disclaims any liability for the use of this map. This map may not be published, broadcast, redrawn or redistributed in whole or in part without the express written permission of the City of Edmonton, Financial and Corporate Services Department. All rights reserved. Copyright © 2021 The City of Edmonton

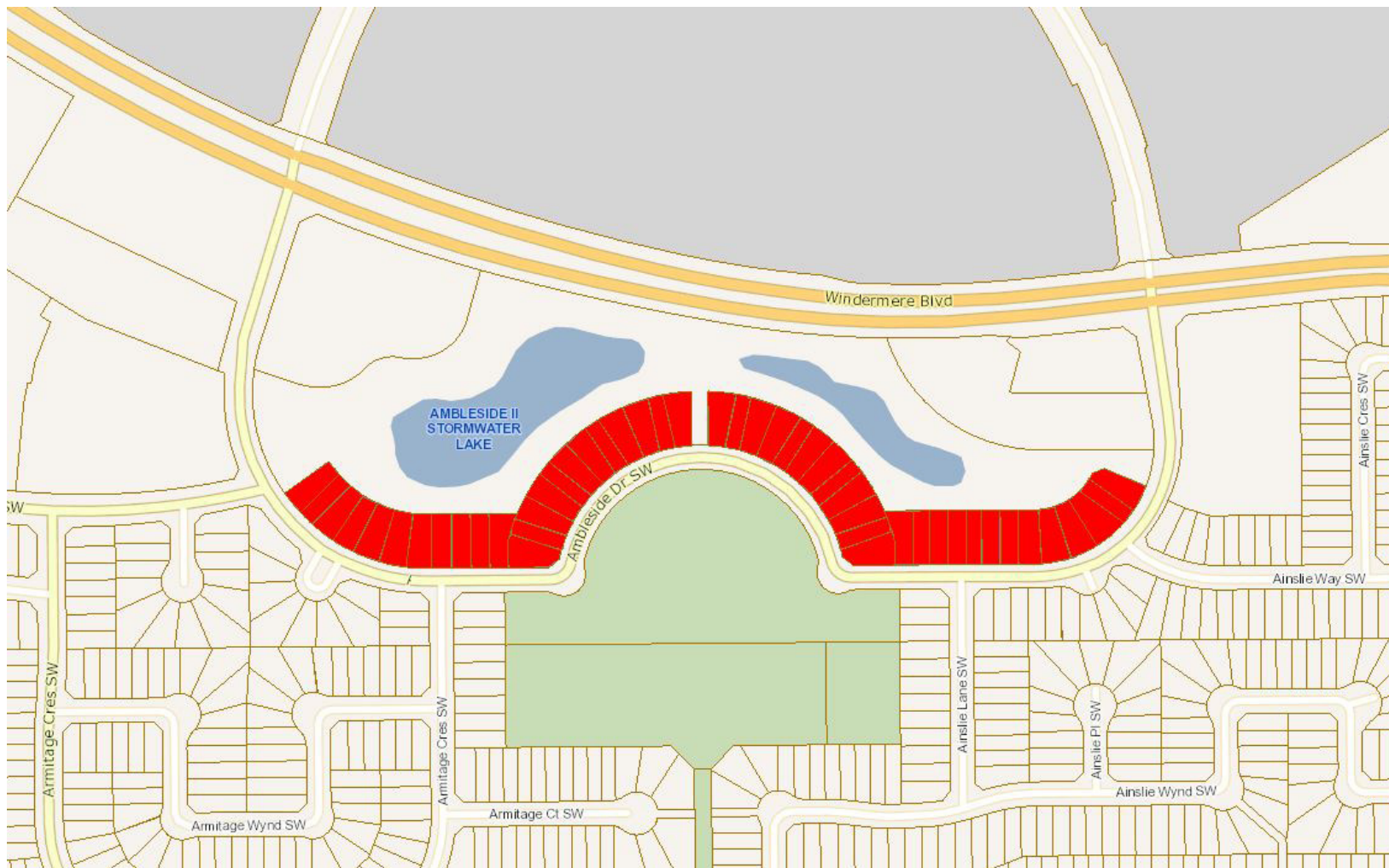
Study Area 3203: Highlands, Capilano, Goldbar, Cameron Heights



 Highlands, Capilano, Goldbar, and Cameron Heights - River Valley & Water Treatment Plant (3203)

The information provided by this map is for reference purpose only. The City of Edmonton disclaims any liability for the use of this map. This map may not be published, broadcast, redrawn or redistributed in whole or in part without the express written permission of the City of Edmonton, Financial and Corporate Services Department. All rights reserved. Copyright © 2021 The City of Edmonton

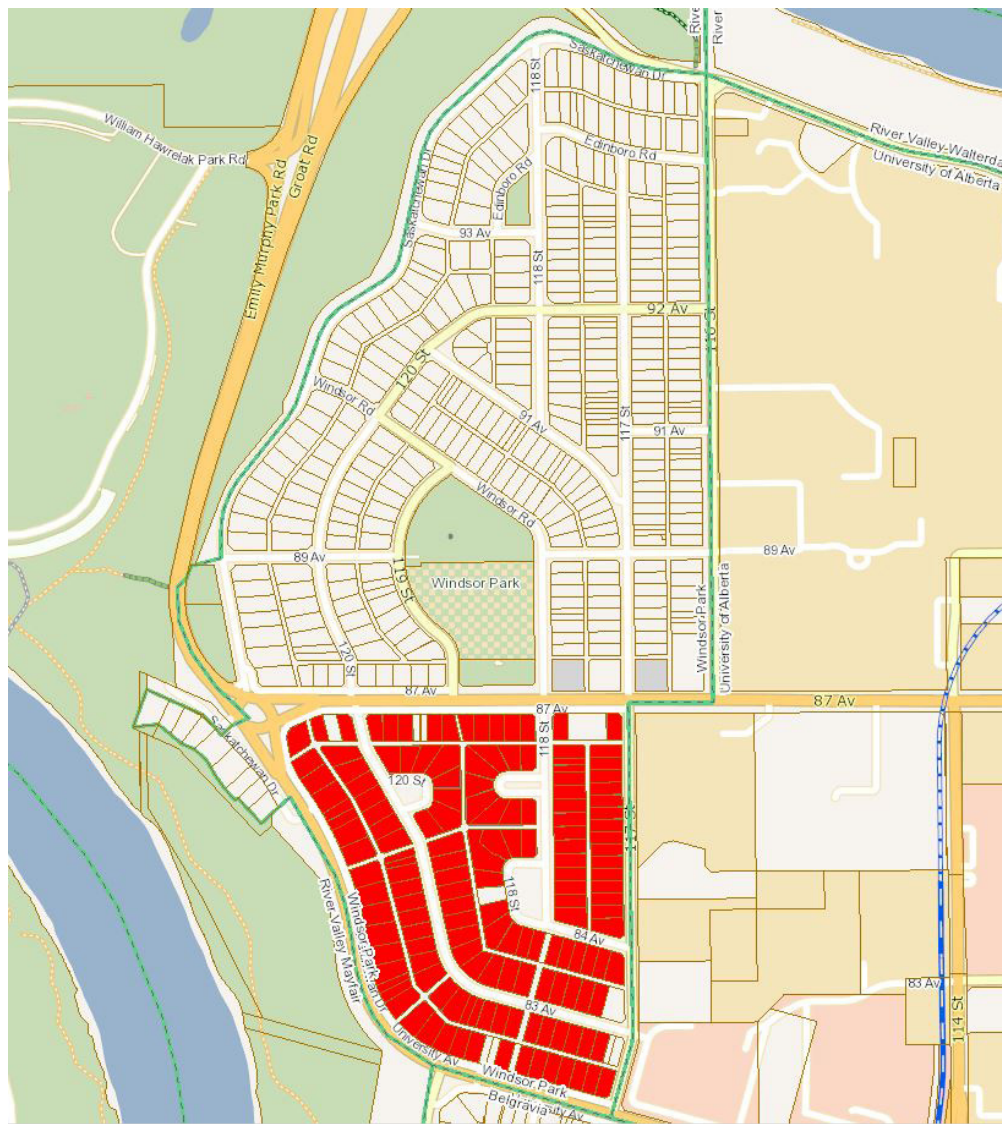
Study Area 3204: Ambleside




 Ambleside (3204)

The information provided by this map is for reference purpose only. The City of Edmonton disclaims any liability for the use of this map. This map may not be published, broadcast, redrawn or redistributed in whole or in part without the express written permission of the City of Edmonton, Financial and Corporate Services Department. All rights reserved. Copyright © 2021 The City of Edmonton

Study Area 3205: Windsor Park



 Windsor Park South (3205)

The information provided by this map is for reference purpose only. The City of Edmonton disclaims any liability for the use of this map. This map may not be published, broadcast, redrawn or redistributed in whole or in part without the express written permission of the City of Edmonton, Financial and Corporate Services Department. All rights reserved. Copyright © 2021 The City of Edmonton

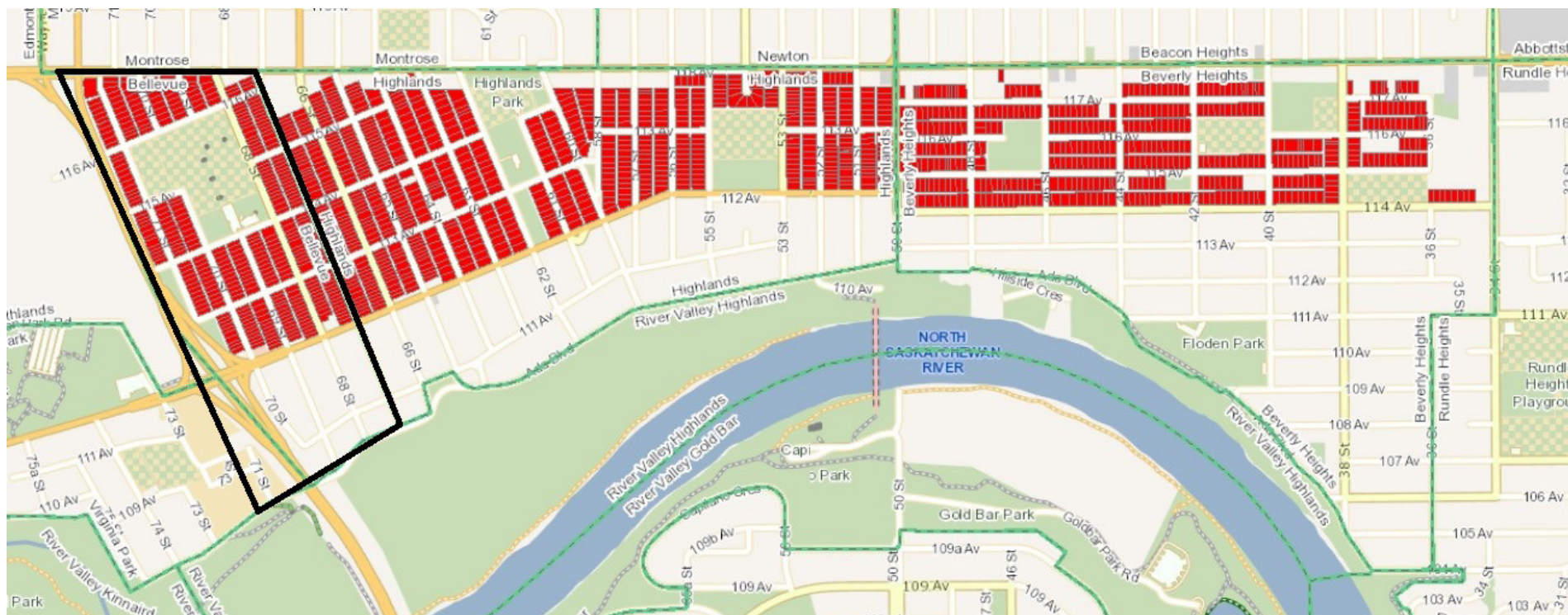
Study Area 3206: Ramsay Heights




 Ramsay Heights West (3206)

The information provided by this map is for reference purpose only. The City of Edmonton disclaims any liability for the use of this map. This map may not be published, broadcast, redrawn or redistributed in whole or in part without the express written permission of the City of Edmonton, Financial and Corporate Services Department. All rights reserved. Copyright © 2021 The City of Edmonton

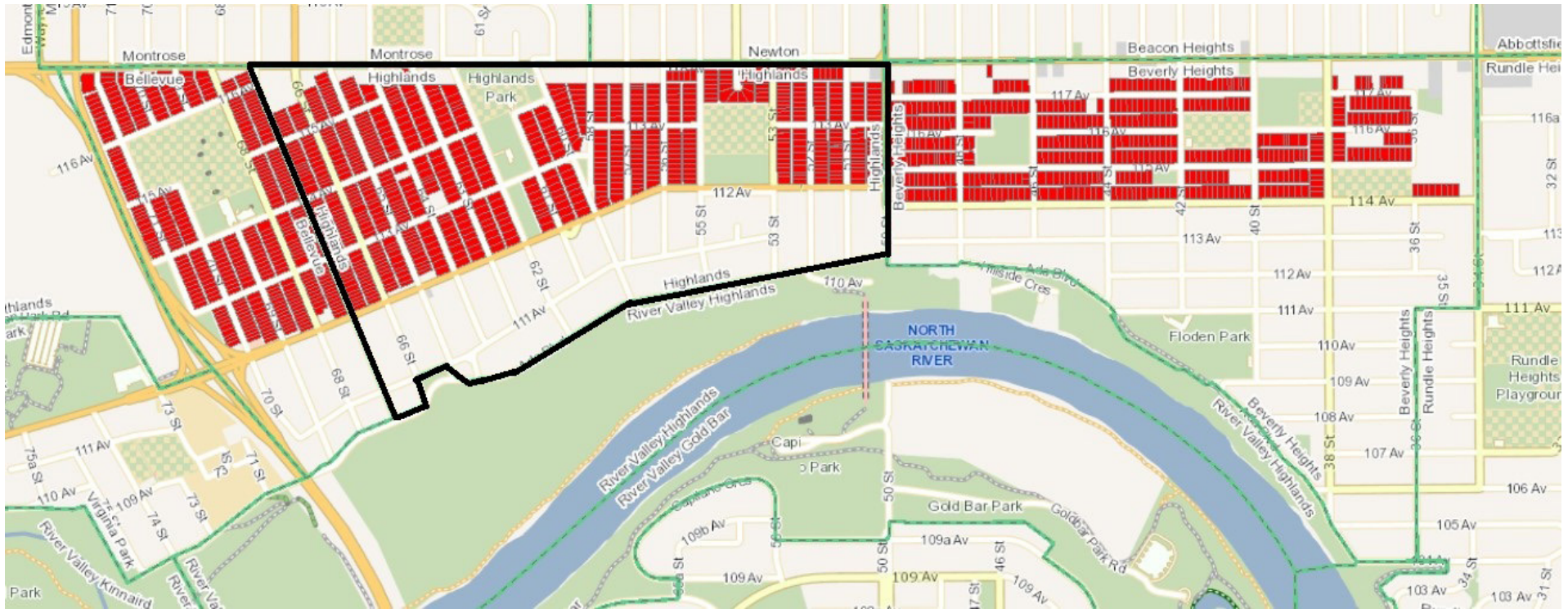
Study Area 3208: Bellevue, Highlands, Beverly Heights




 Bellevue - North of 112th Avenue (3208)

The information provided by this map is for reference purpose only. The City of Edmonton disclaims any liability for the use of this map. This map may not be published, broadcast, redrawn or redistributed in whole or in part without the express written permission of the City of Edmonton, Financial and Corporate Services Department. All rights reserved. Copyright © 2021 The City of Edmonton

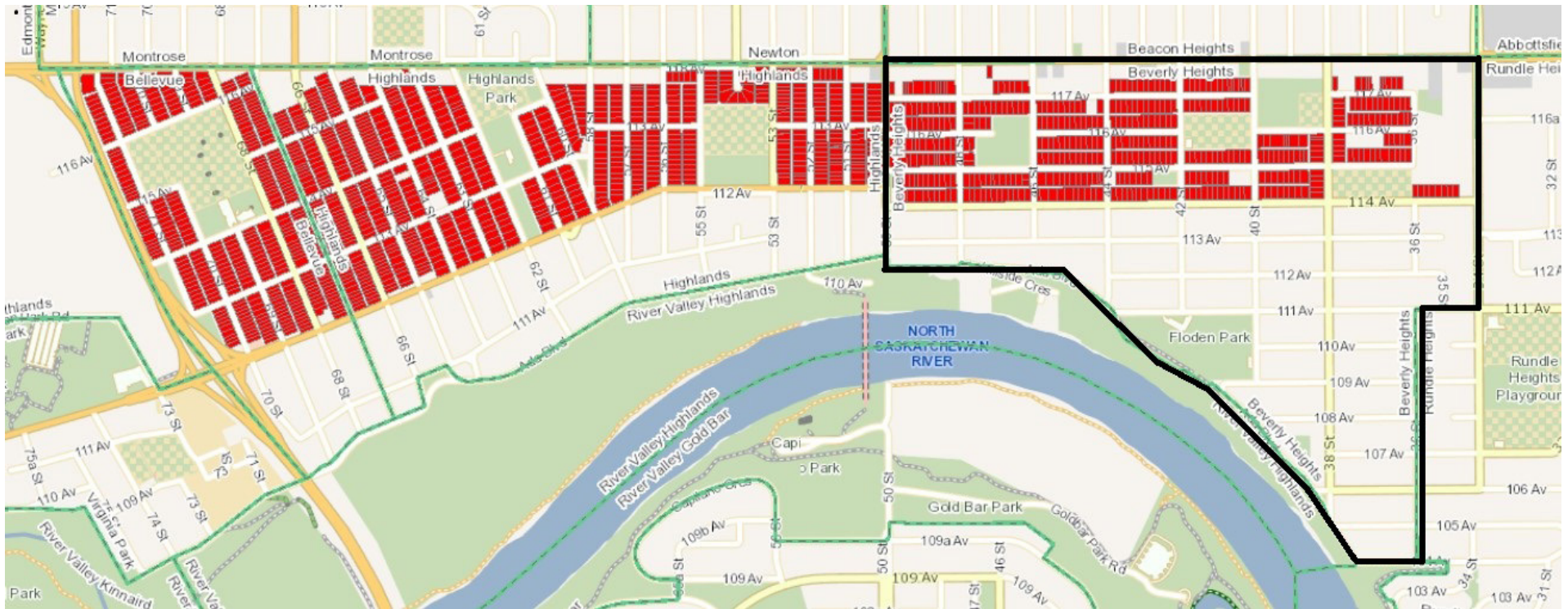
Study Area 3208: Bellevue, Highlands, Beverly Heights



 Highlands - North of 112th Avenue (3208)

The information provided by this map is for reference purpose only. The City of Edmonton disclaims any liability for the use of this map. This map may not be published, broadcast, redrawn or redistributed in whole or in part without the express written permission of the City of Edmonton, Financial and Corporate Services Department. All rights reserved. Copyright © 2021 The City of Edmonton

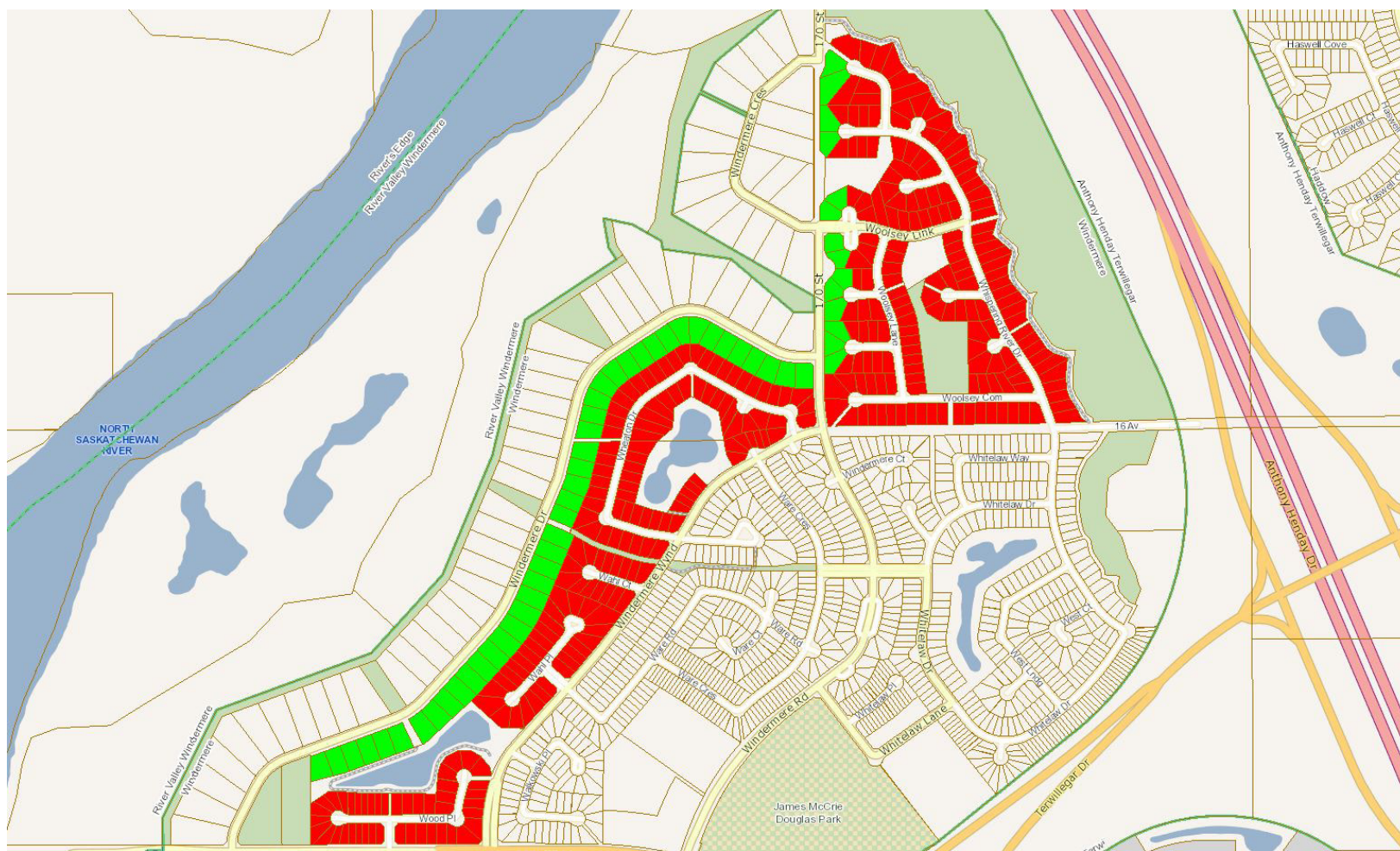
Study Area 3208: Bellevue, Highlands, Beverly Heights



 Beverly Heights - North of 112th Avenue (3208)

The information provided by this map is for reference purpose only. The City of Edmonton disclaims any liability for the use of this map. This map may not be published, broadcast, redrawn or redistributed in whole or in part without the express written permission of the City of Edmonton, Financial and Corporate Services Department. All rights reserved. Copyright © 2021 The City of Edmonton

Study Area 3209/3220: Windermere

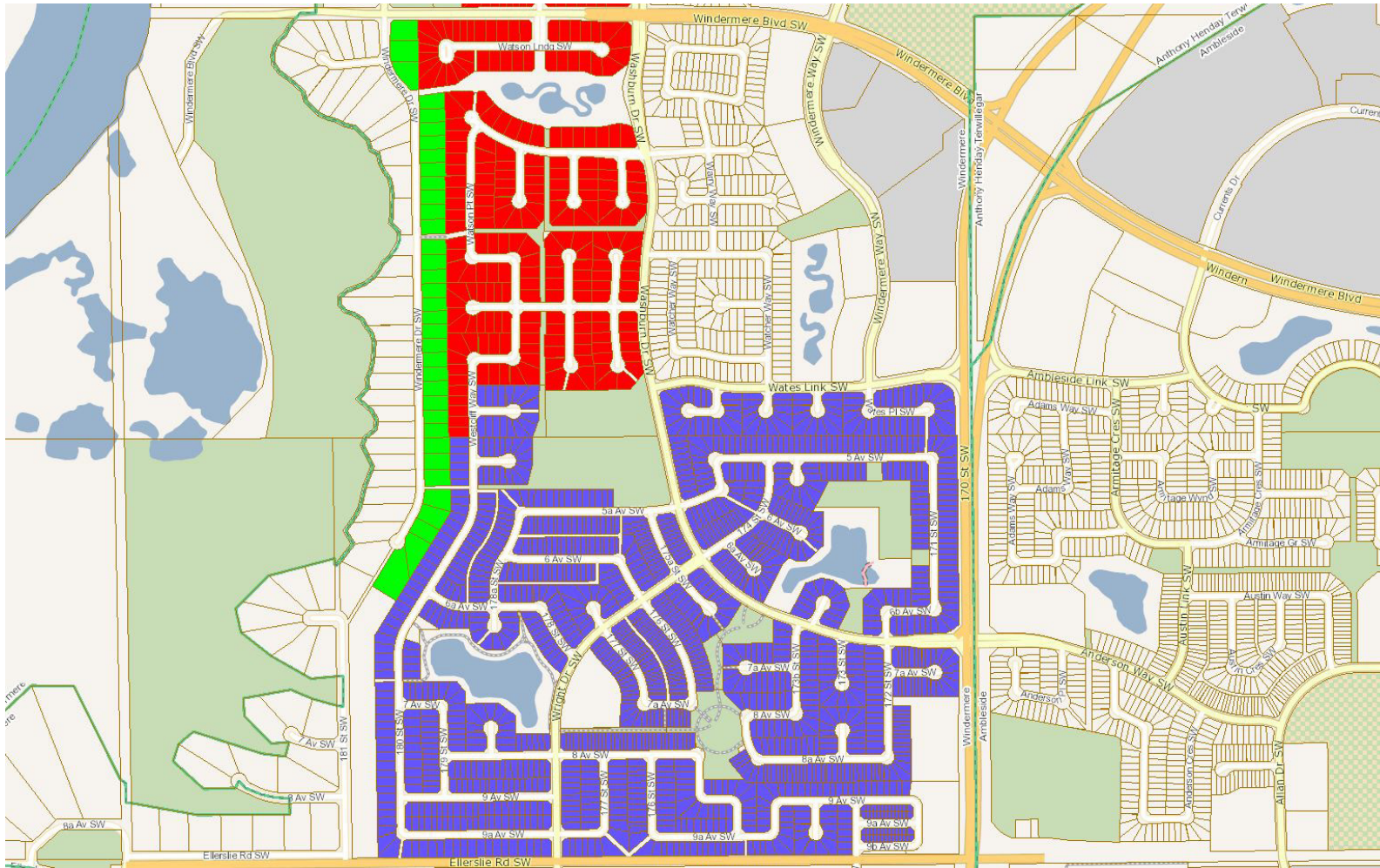


 Upper Windermere (3209)

 Windermere DC1 Large Lots (3220)

The information provided by this map is for reference purpose only. The City of Edmonton disclaims any liability for the use of this map. This map may not be published, broadcast, redrawn or redistributed in whole or in part without the express written permission of the City of Edmonton, Financial and Corporate Services Department. All rights reserved. Copyright © 2021 The City of Edmonton

Study Area 3209/3220/3221: Windermere




- Upper Windermere (3209)
- Windermere DC1 Large Lots (3220)
- Windermere South (3221)

The information provided by this map is for reference purpose only. The City of Edmonton disclaims any liability for the use of this map. This map may not be published, broadcast, redrawn or redistributed in whole or in part without the express written permission of the City of Edmonton, Financial and Corporate Services Department. All rights reserved. Copyright © 2021 The City of Edmonton

Study Area 3221/3222: Windermere

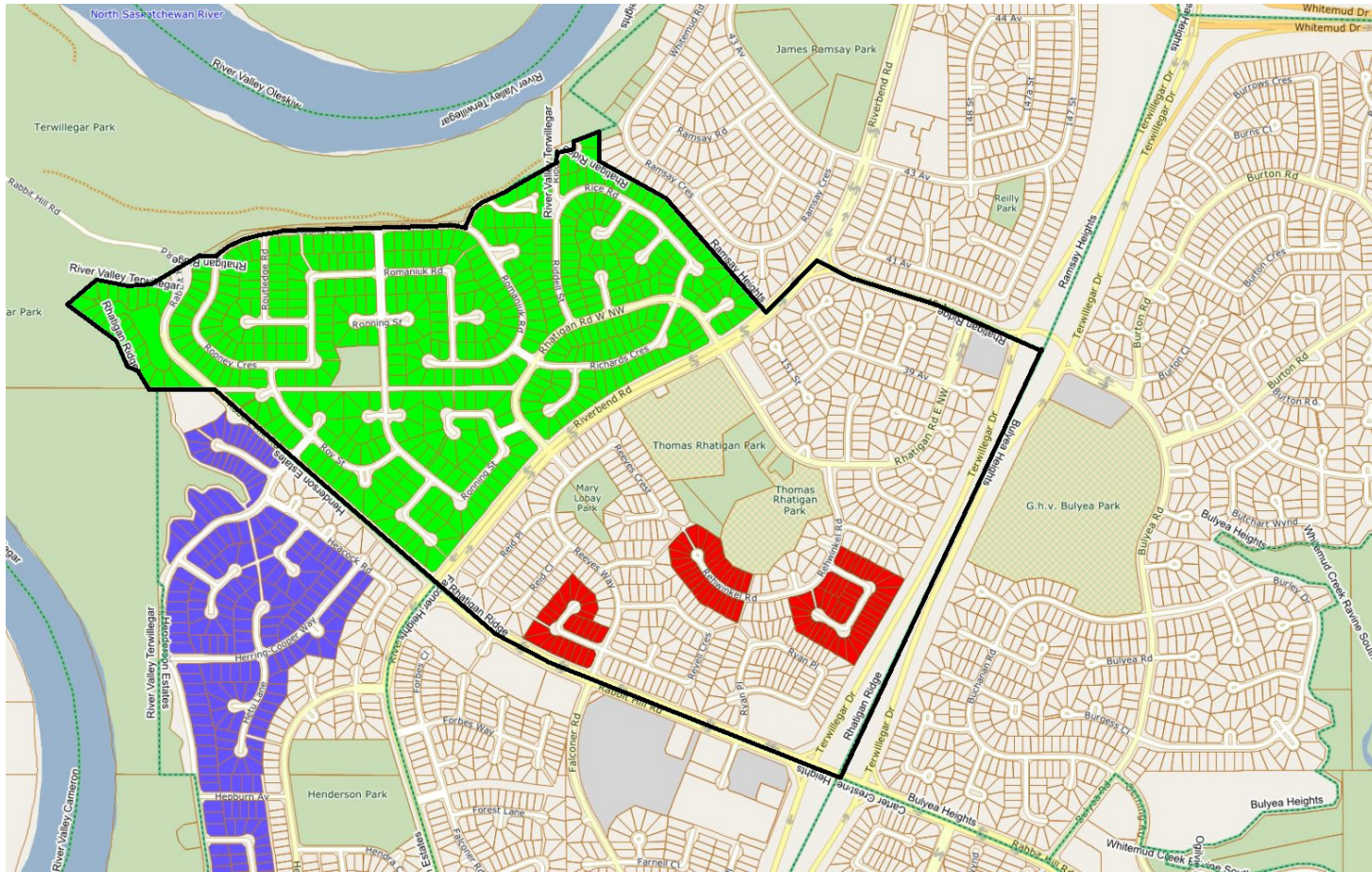


 Windermere South (3221)

 Windermere South of Ellerslie (3222)

The information provided by this map is for reference purpose only. The City of Edmonton disclaims any liability for the use of this map. This map may not be published, broadcast, redrawn or redistributed in whole or in part without the express written permission of the City of Edmonton, Financial and Corporate Services Department. All rights reserved. Copyright © 2021 The City of Edmonton

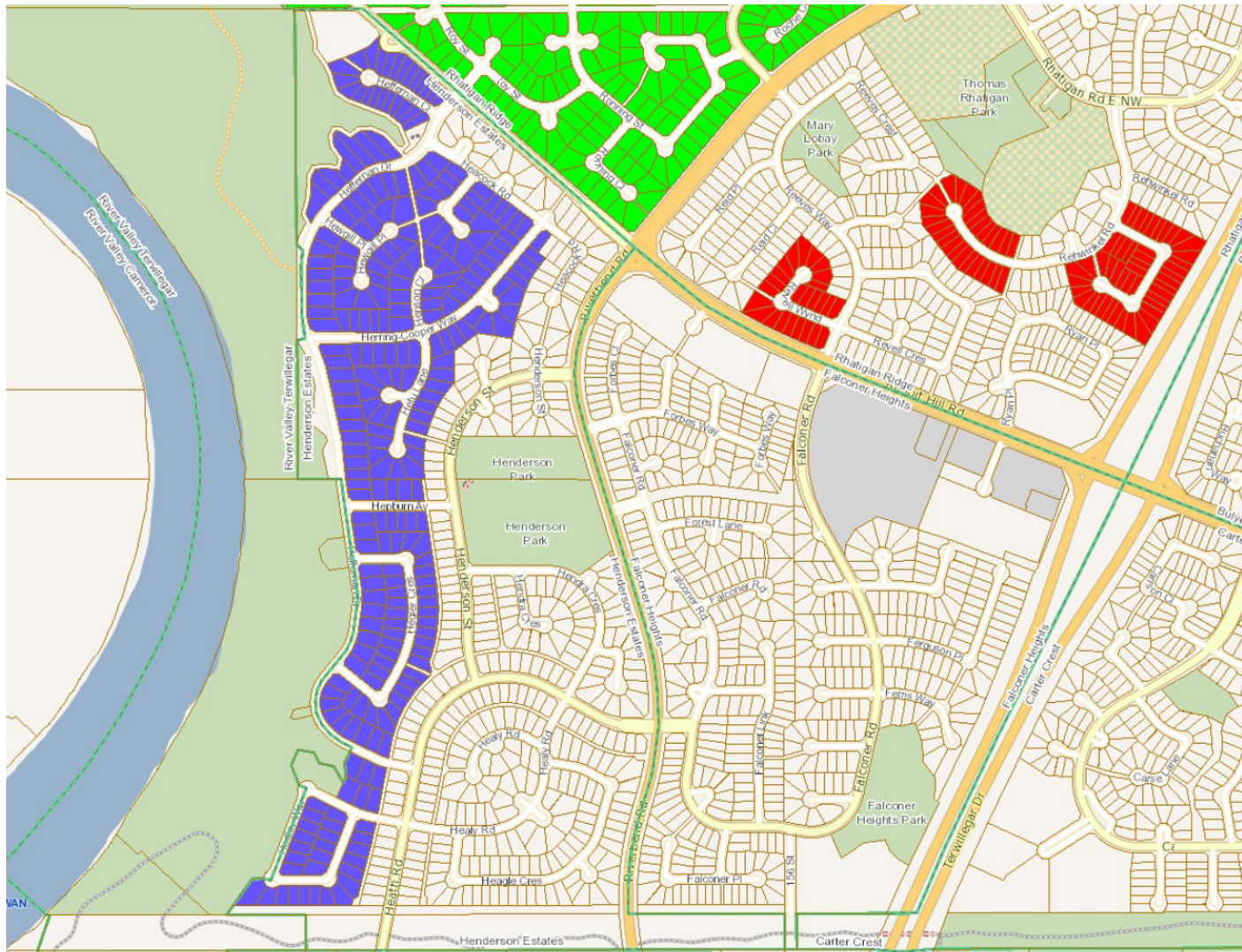
Study Area 3225/3226: Rhatigan Ridge, Henderson Estates






- Rhatigan Adult Complexes (3212)
- Rhatigan West (3225)
- Henderson West (3226)
See Following Page

The information provided by this map is for reference purpose only. The City of Edmonton disclaims any liability for the use of this map. This map may not be published, broadcast, redrawn or redistributed in whole or in part without the express written permission of the City of Edmonton, Financial and Corporate Services Department. All rights reserved. Copyright © 2021 The City of Edmonton

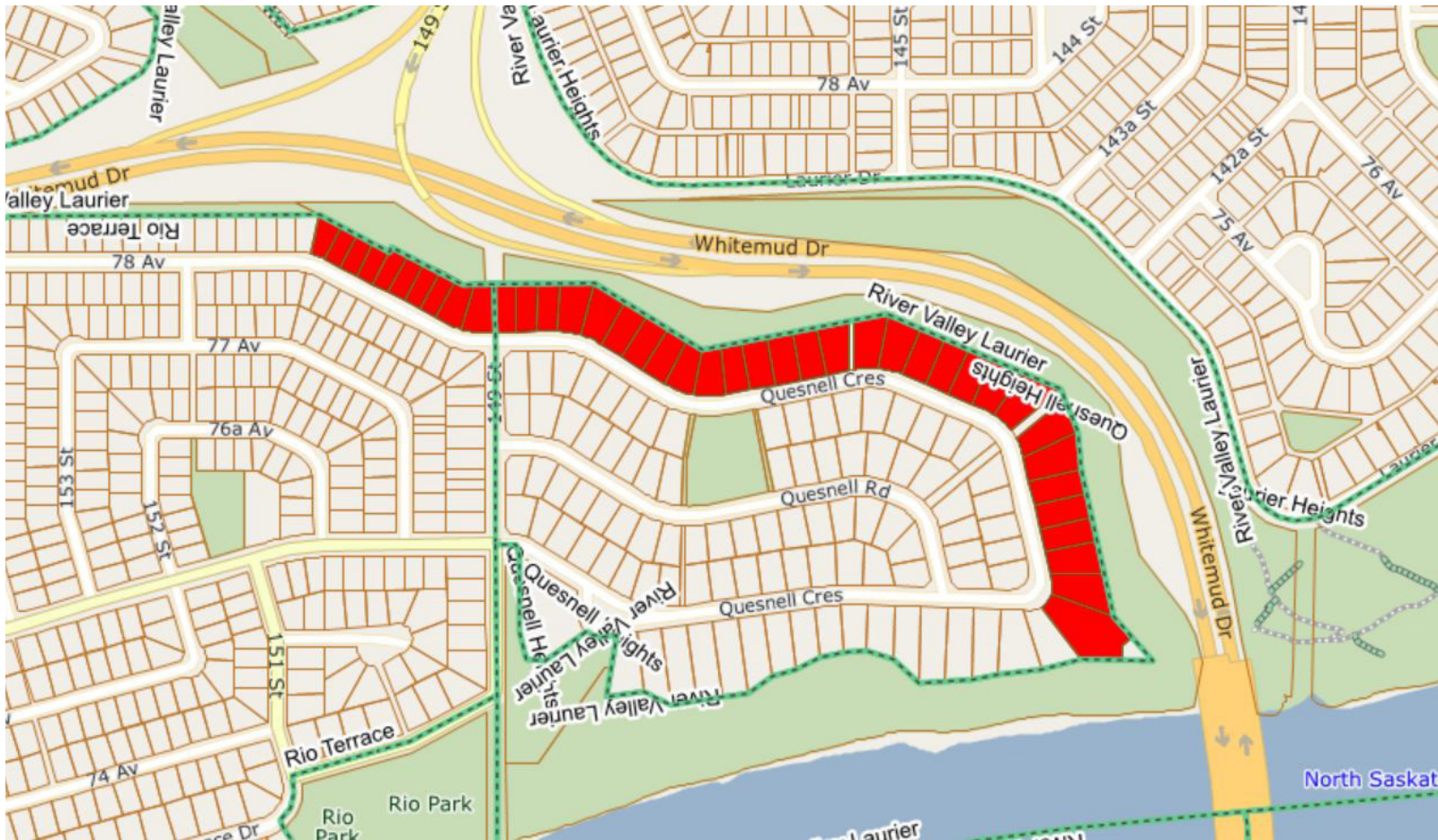
Study Area 3225/3226: Rhatigan Ridge, Henderson Estates




-  Rhatigan Adult Complexes (3212) (see previous page)
-  Rhatigan West (3225) (see previous page)
-  Henderson West (3226)

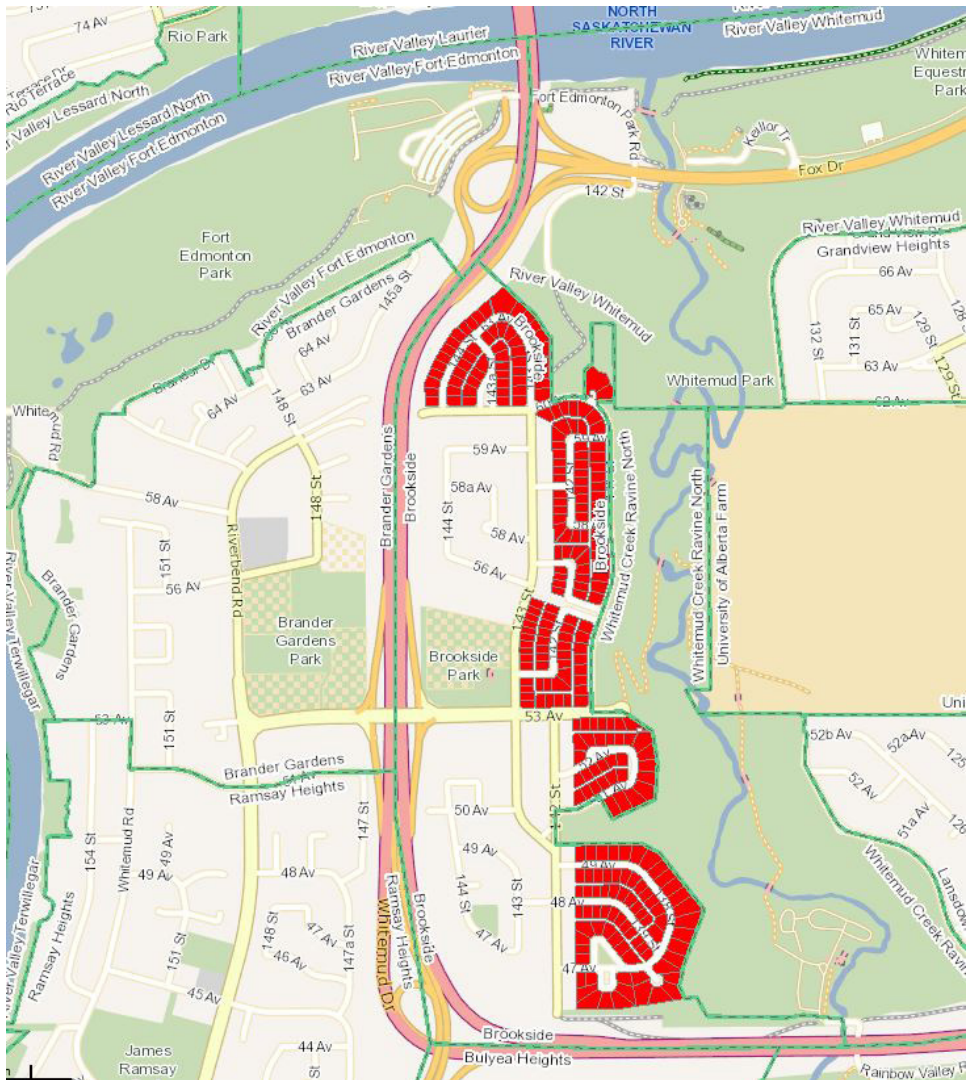
The information provided by this map is for reference purpose only. The City of Edmonton disclaims any liability for the use of this map. This map may not be published, broadcast, redrawn or redistributed in whole or in part without the express written permission of the City of Edmonton, Financial and Corporate Services Department. All rights reserved. Copyright © 2021 The City of Edmonton

Study Area 3217: Rio Terrace and Quesnell Heights



 Rio Terrace and Quesnell Heights North (3217)

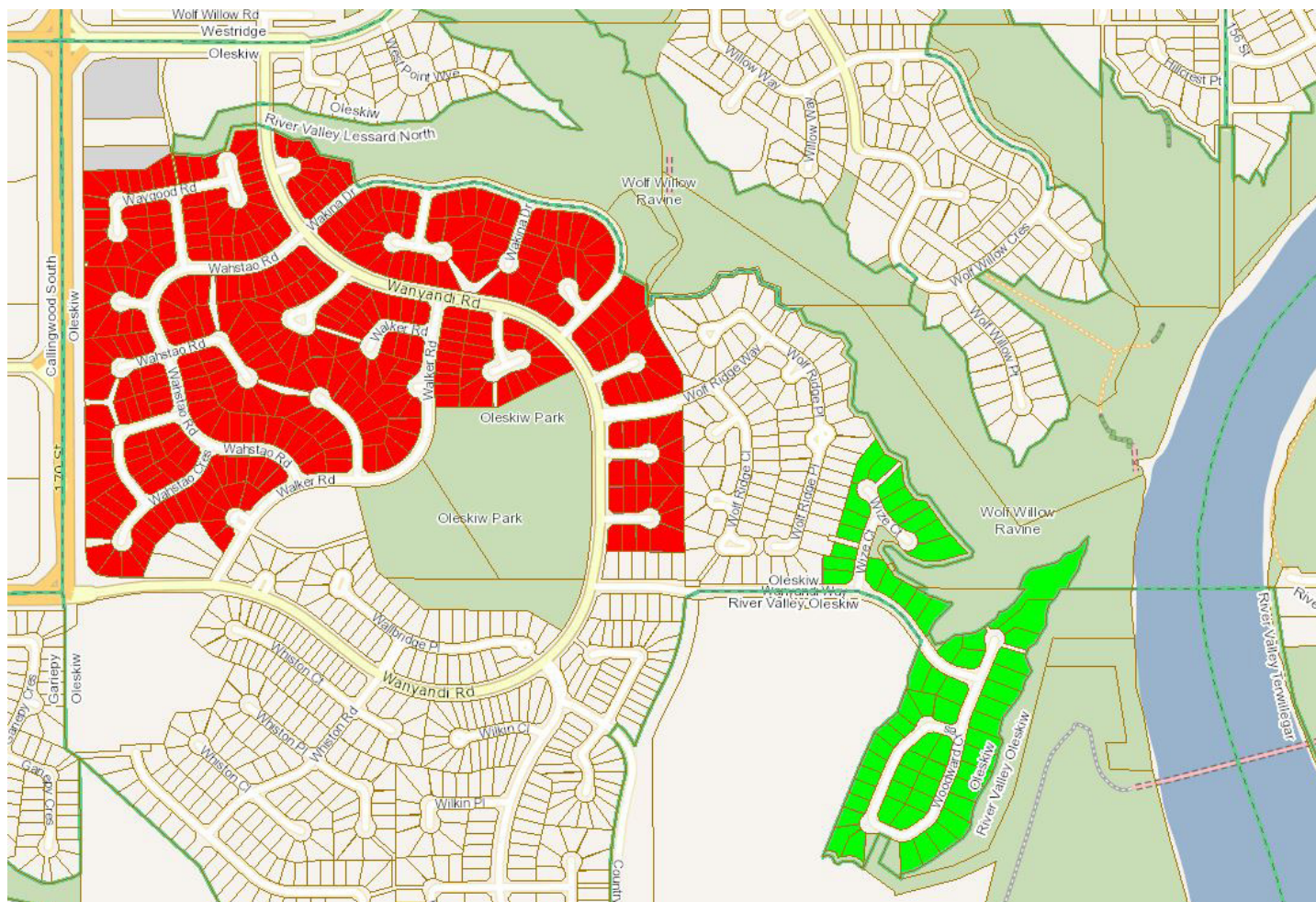
Study Area 3224: Brookside





 Brookside East (3224)

The information provided by this map is for reference purpose only. The City of Edmonton disclaims any liability for the use of this map. This map may not be published, broadcast, redrawn or redistributed in whole or in part without the express written permission of the City of Edmonton, Financial and Corporate Services Department. All rights reserved. Copyright © 2021 The City of Edmonton

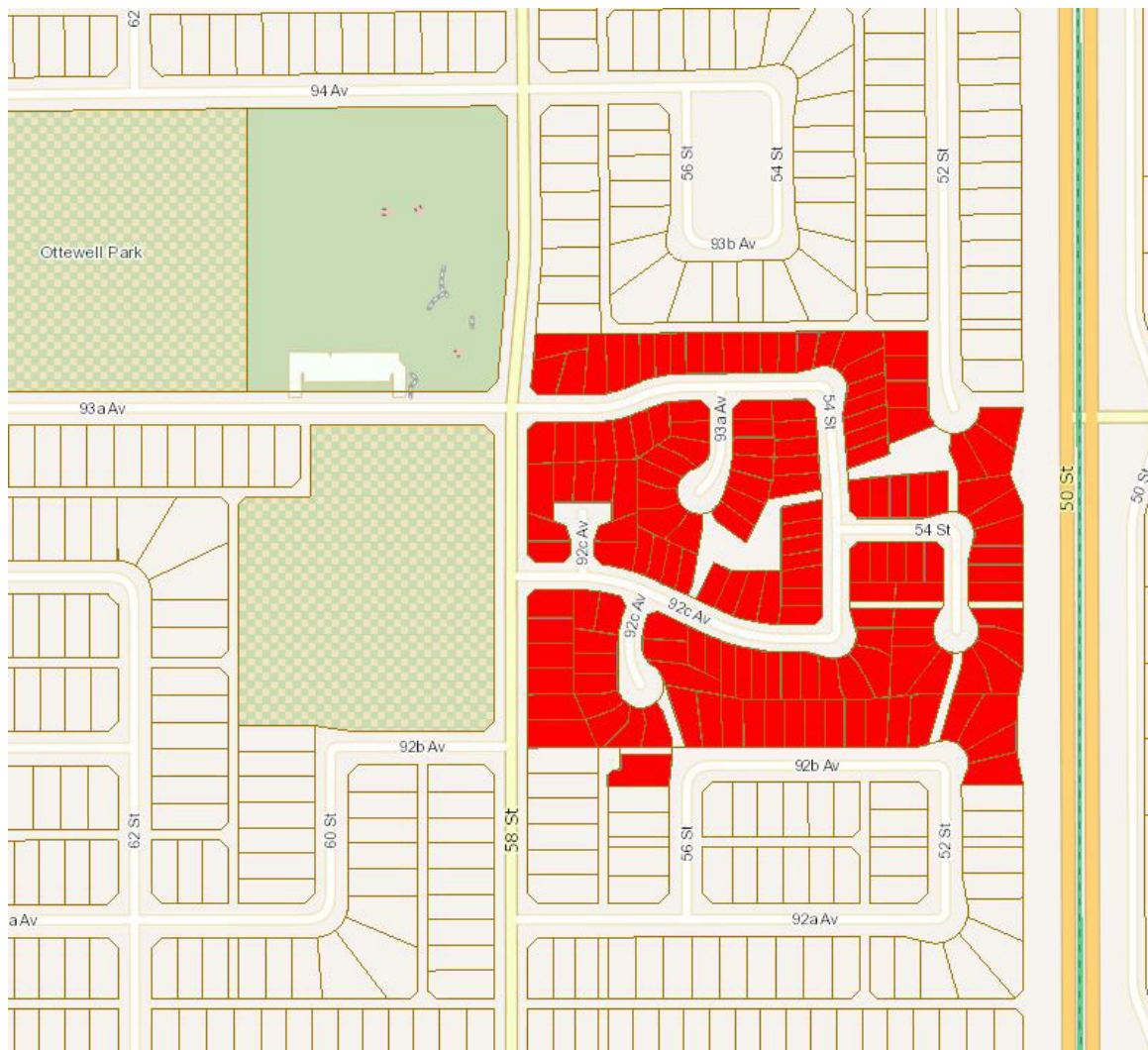
Study Area 3228/3229: Oleskiw



-  Oleskiw Phase 1 (3228)
-  Oleskiw Phase 3 (3229)

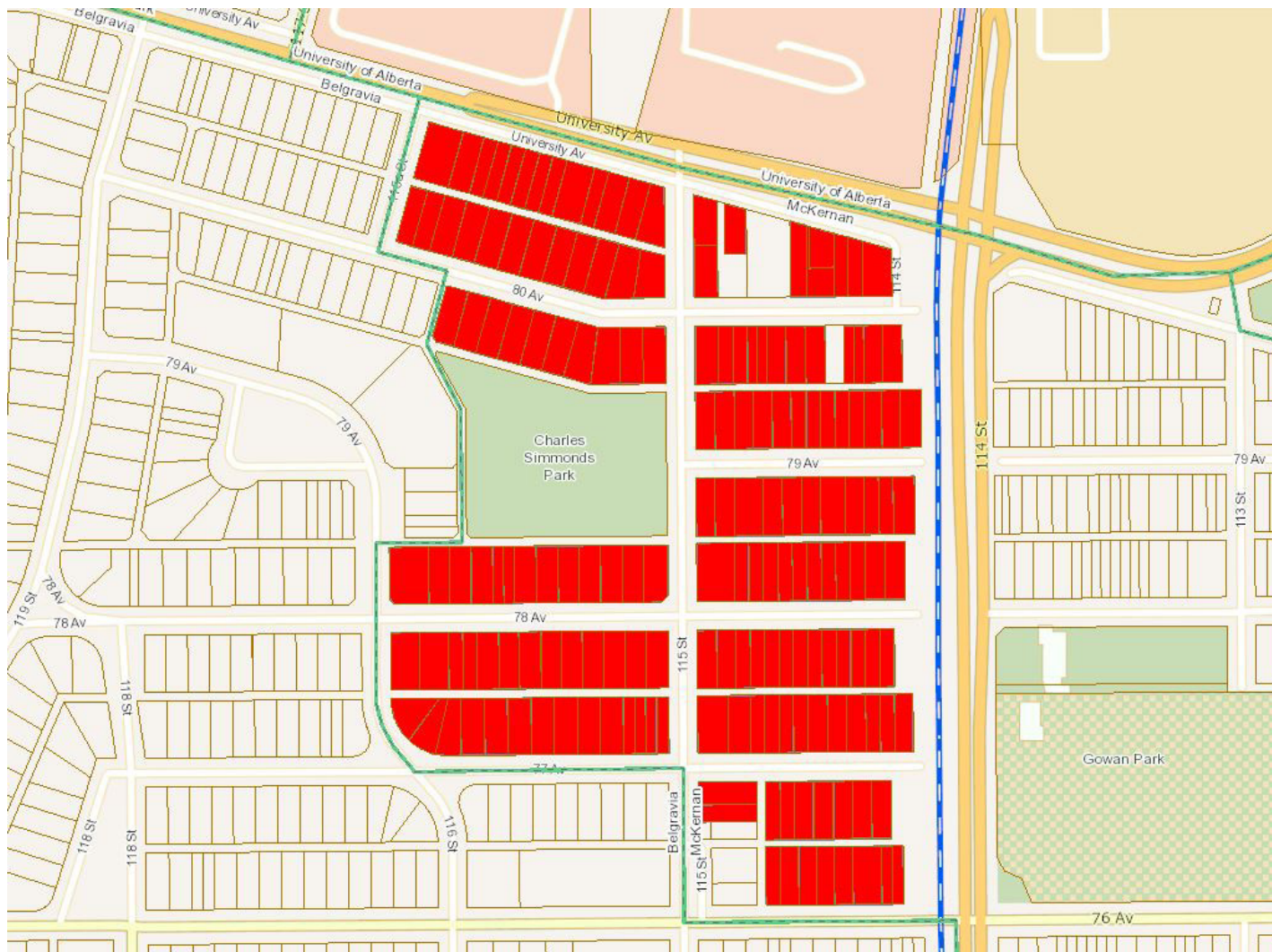
The information provided by this map is for reference purpose only. The City of Edmonton disclaims any liability for the use of this map. This map may not be published, broadcast, redrawn or redistributed in whole or in part without the express written permission of the City of Edmonton, Financial and Corporate Services Department. All rights reserved. Copyright © 2021 The City of Edmonton


Study Area 3232: Ottewell



 Ottewell RPL (3232)

Study Area 3233: McKernan



 McKernan West (3233)

The information provided by this map is for reference purpose only. The City of Edmonton disclaims any liability for the use of this map. This map may not be published, broadcast, redrawn or redistributed in whole or in part without the express written permission of the City of Edmonton, Financial and Corporate Services Department. All rights reserved. Copyright © 2021 The City of Edmonton

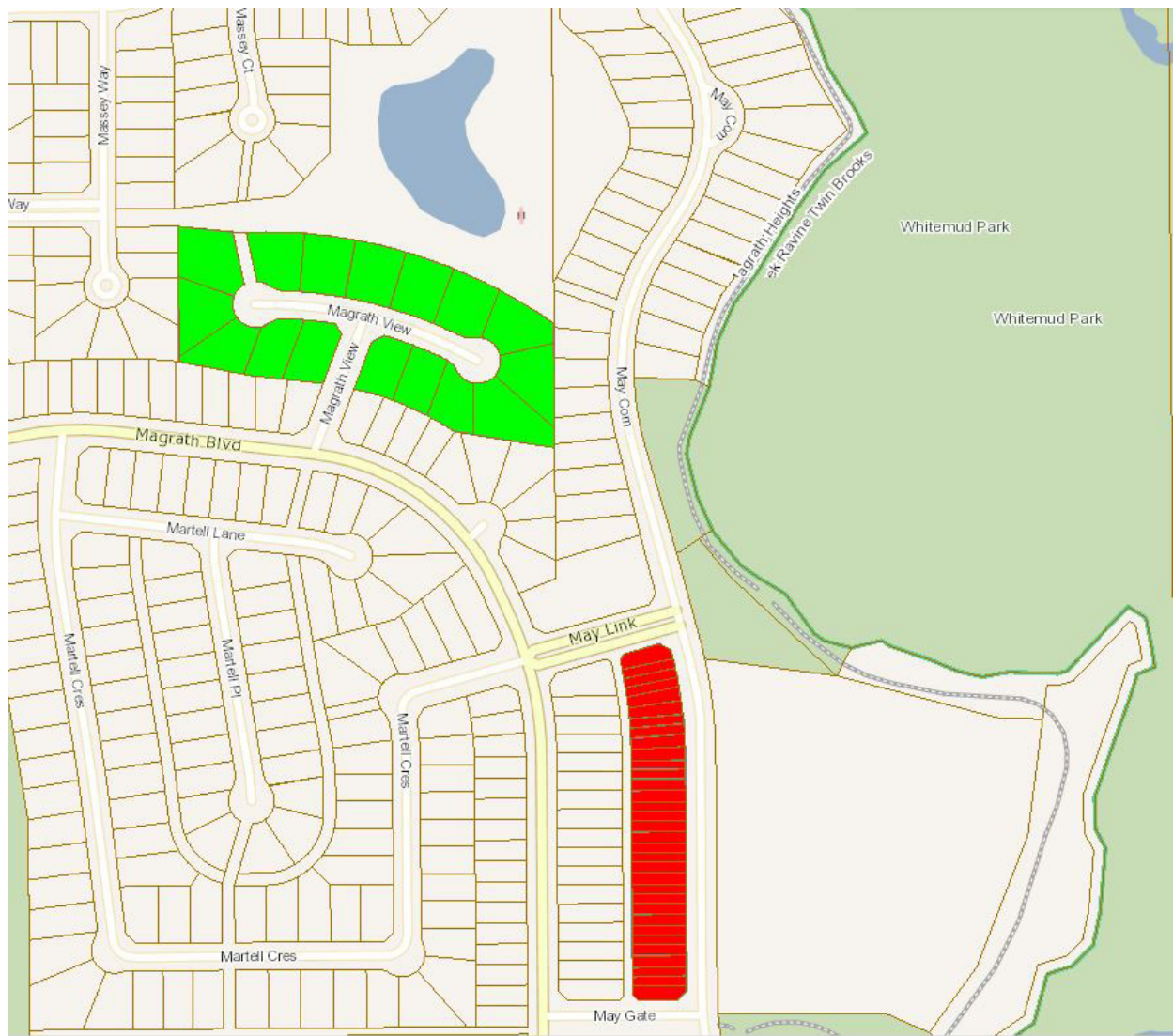
Study Area 3234: Suder Greens



 Suder Greens North (3234)

The information provided by this map is for reference purpose only. The City of Edmonton disclaims any liability for the use of this map. This map may not be published, broadcast, redrawn or redistributed in whole or in part without the express written permission of the City of Edmonton, Financial and Corporate Services Department. All rights reserved. Copyright © 2021 The City of Edmonton

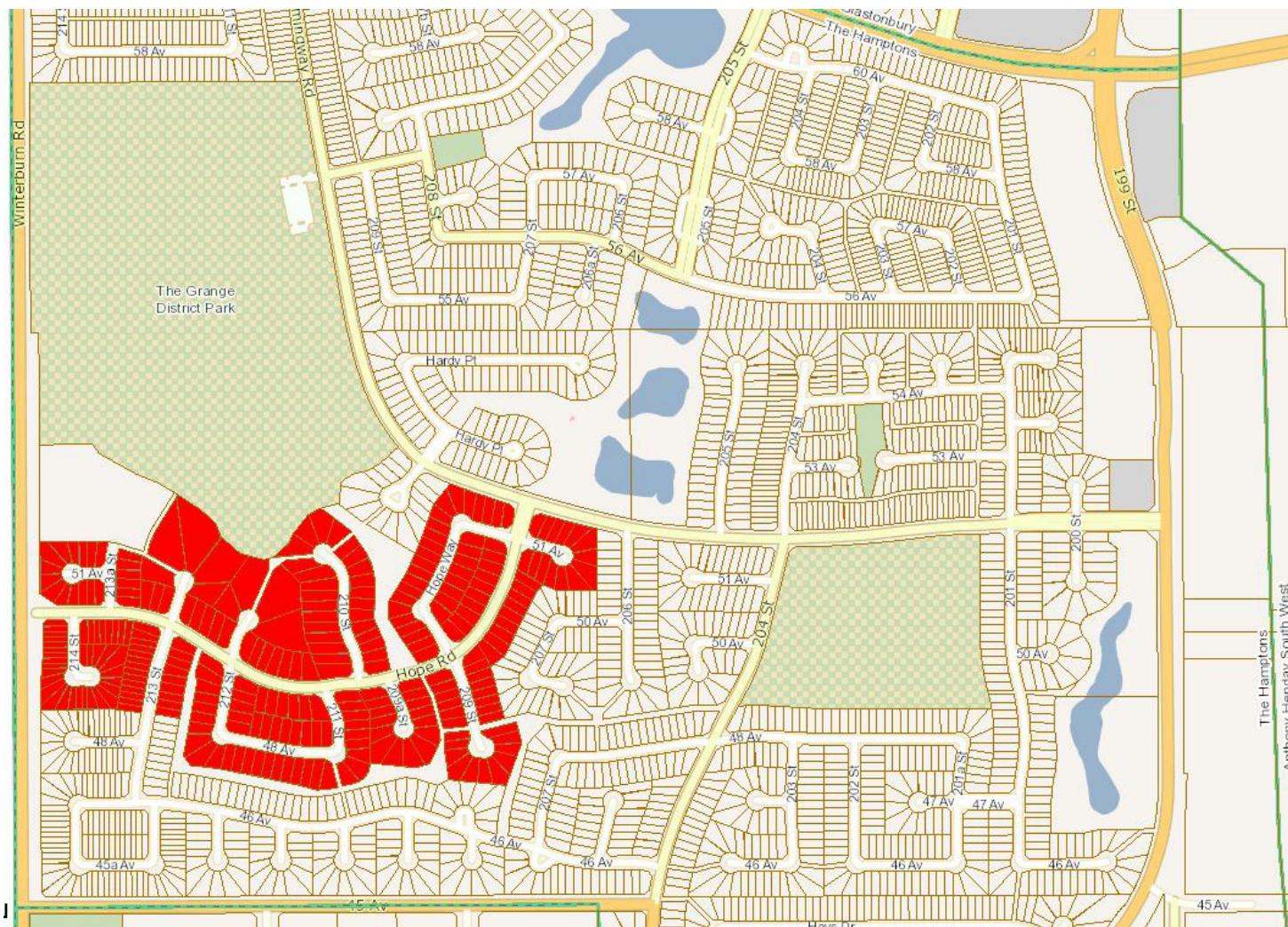
Study Area 3236/4001: Magrath Heights



- May Common Rowhouses (3236)
- Magrath View (4001)

The information provided by this map is for reference purpose only. The City of Edmonton disclaims any liability for the use of this map. This map may not be published, broadcast, redrawn or redistributed in whole or in part without the express written permission of the City of Edmonton, Financial and Corporate Services Department. All rights reserved. Copyright © 2021 The City of Edmonton

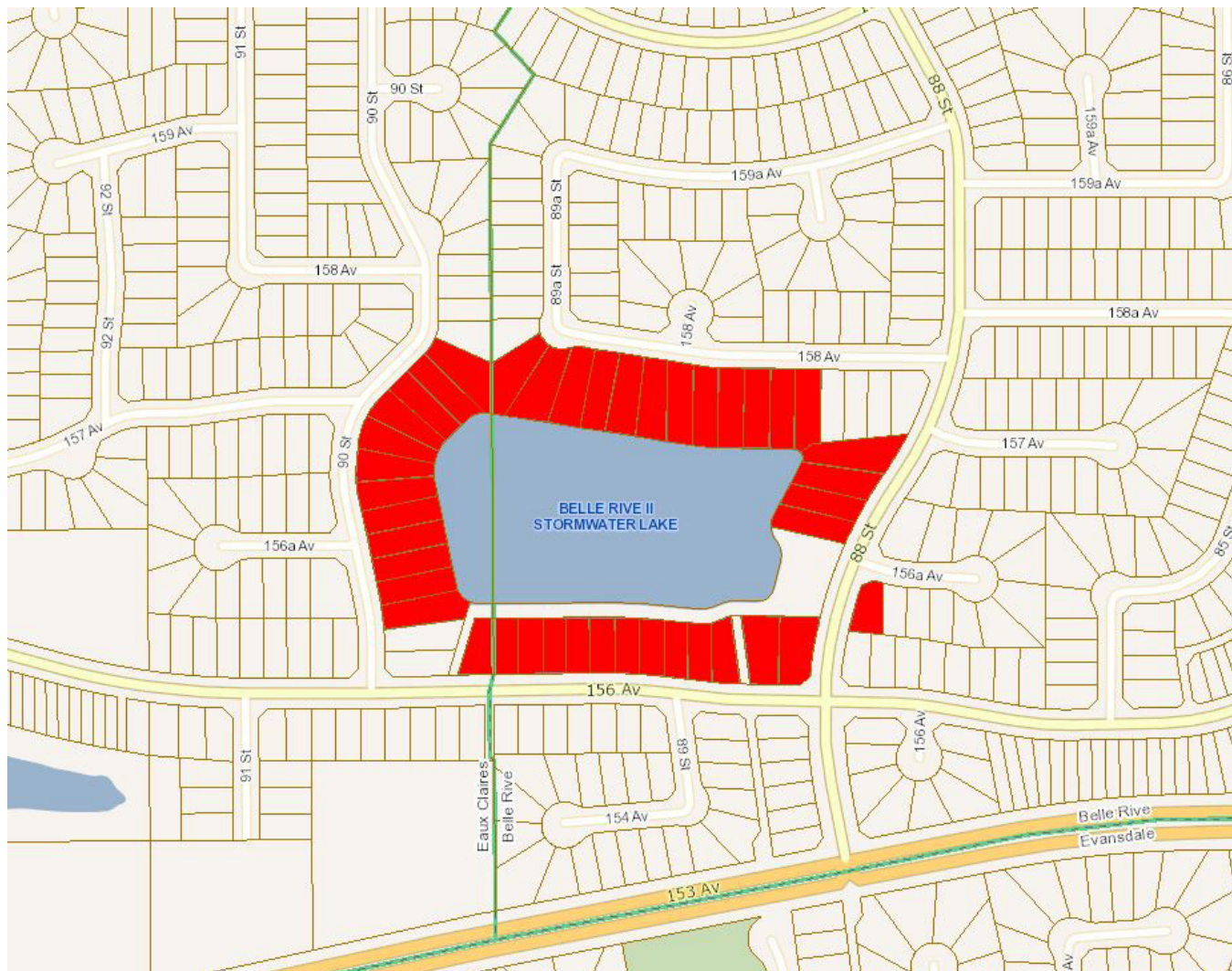
Study Area 3237: The Hamptons



 Copperwood HOA (3237)

The information provided by this map is for reference purpose only. The City of Edmonton disclaims any liability for the use of this map. This map may not be published, broadcast, redrawn or redistributed in whole or in part without the express written permission of the City of Edmonton, Financial and Corporate Services Department. All rights reserved. Copyright © 2021 The City of Edmonton

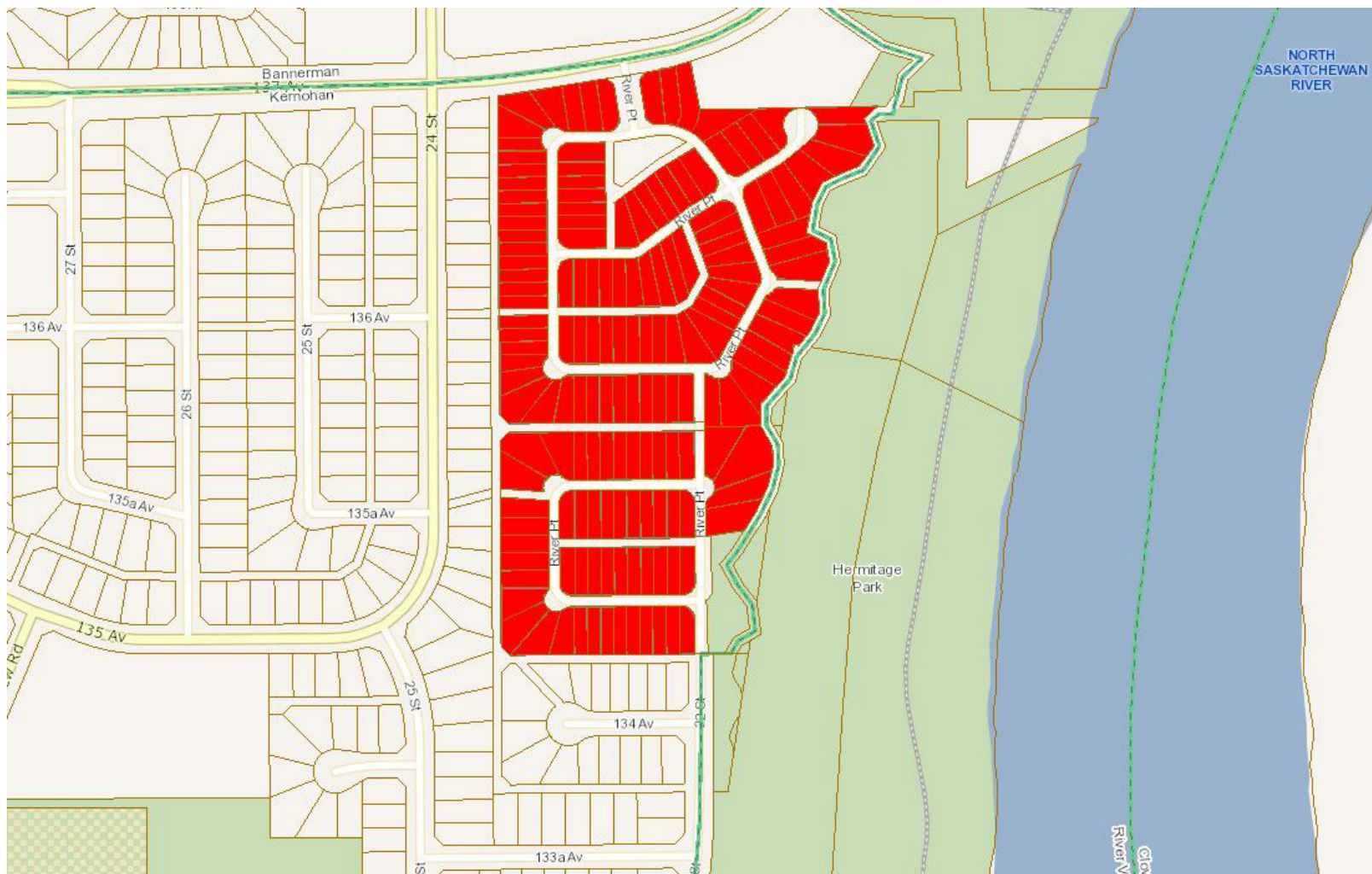
Study Area 3238: Belle Rive, Eaux Claires



 Belle Rive Lake South (3238)

The information provided by this map is for reference purpose only. The City of Edmonton disclaims any liability for the use of this map. This map may not be published, broadcast, redrawn or redistributed in whole or in part without the express written permission of the City of Edmonton, Financial and Corporate Services Department. All rights reserved. Copyright © 2021 The City of Edmonton

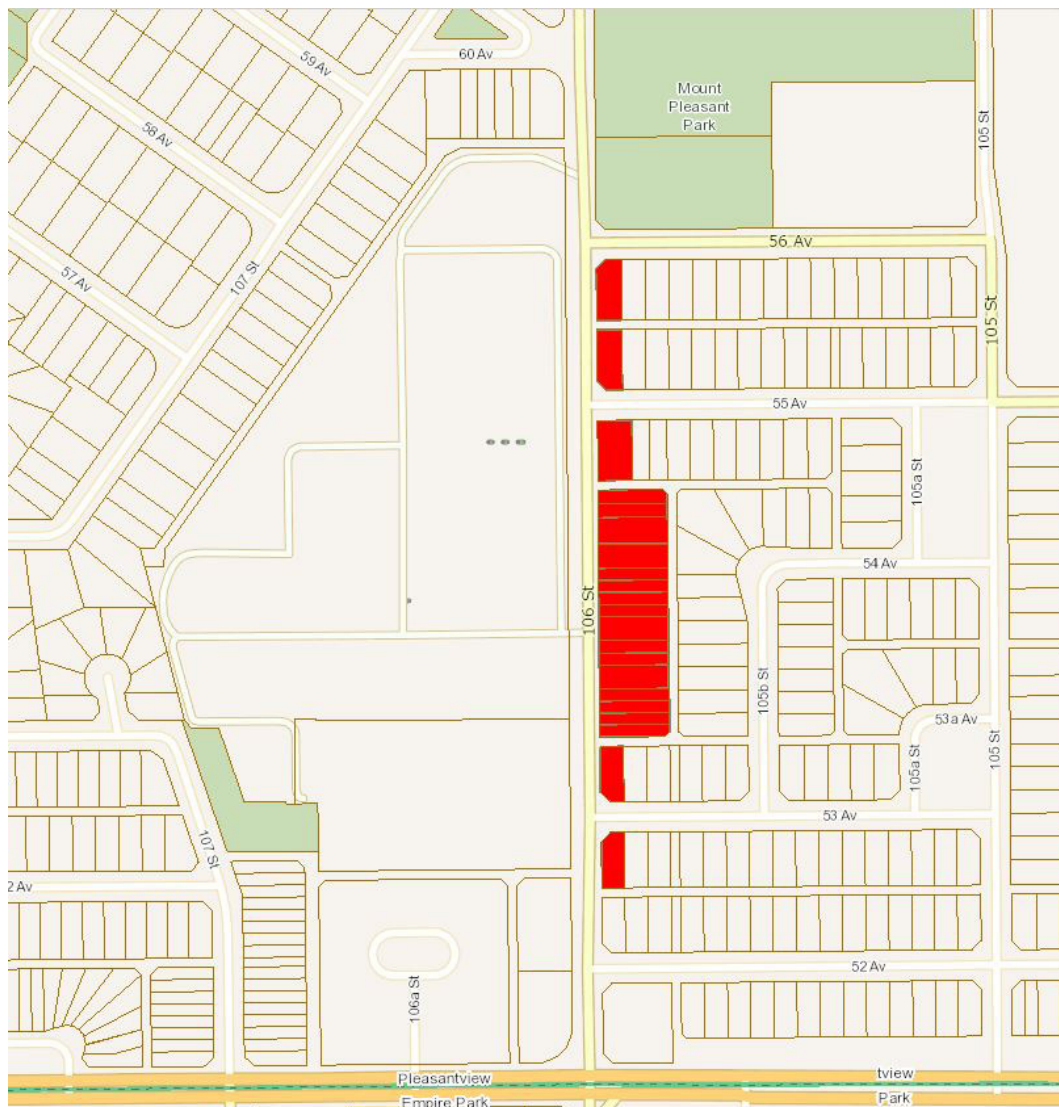
Study Area 3242: Kernohan



 Riverpoint HOA (3242)

The information provided by this map is for reference purpose only. The City of Edmonton disclaims any liability for the use of this map. This map may not be published, broadcast, redrawn or redistributed in whole or in part without the express written permission of the City of Edmonton, Financial and Corporate Services Department. All rights reserved. Copyright © 2021 The City of Edmonton

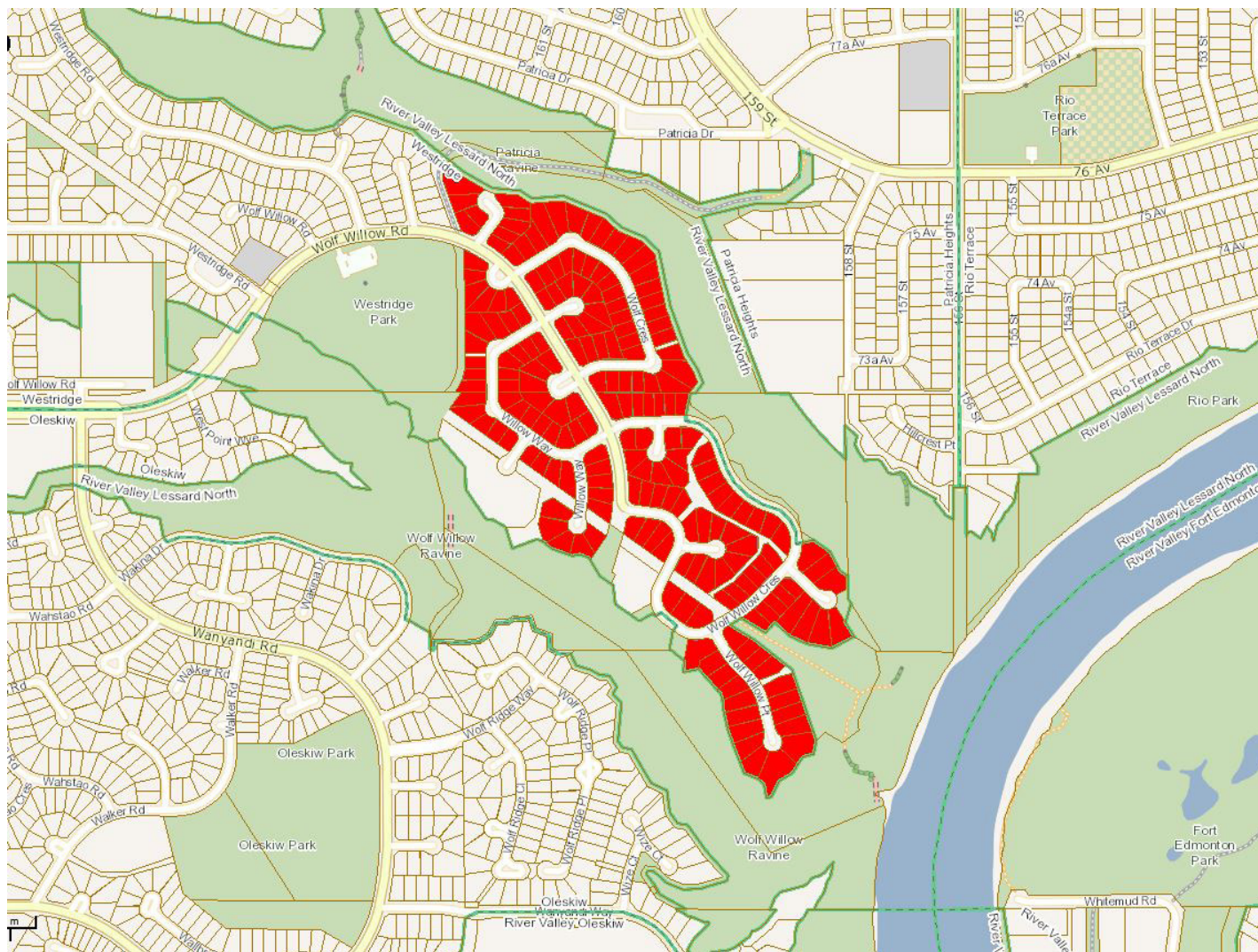
Study Area 3243: Pleasantview




 Pleasantview Cemetery East (3243)

The information provided by this map is for reference purpose only. The City of Edmonton disclaims any liability for the use of this map. This map may not be published, broadcast, redrawn or redistributed in whole or in part without the express written permission of the City of Edmonton, Financial and Corporate Services Department. All rights reserved. Copyright © 2021 The City of Edmonton

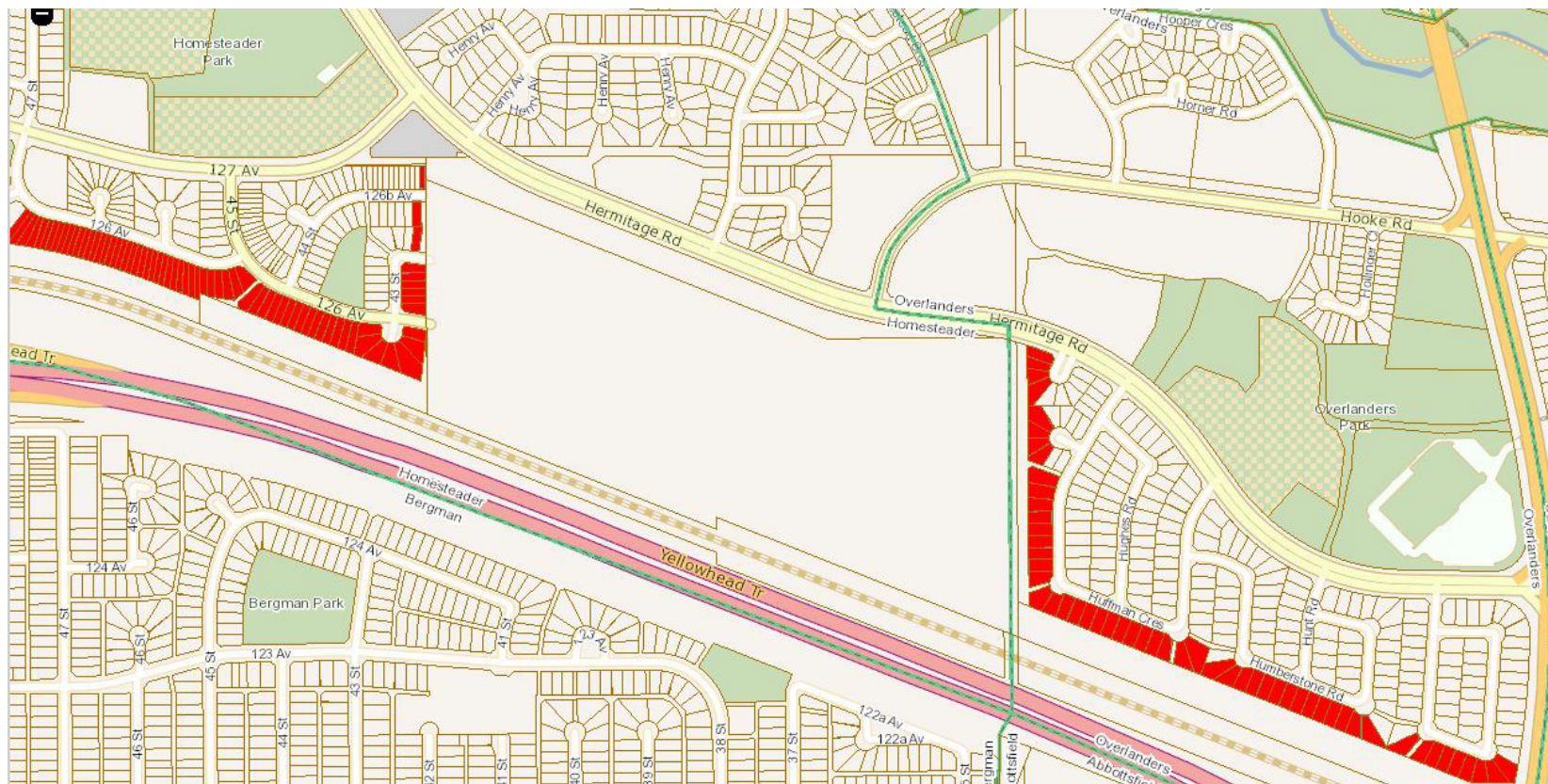
Study Area 3244: Westridge




 Westridge East (3244)

The information provided by this map is for reference purpose only. The City of Edmonton disclaims any liability for the use of this map. This map may not be published, broadcast, redrawn or redistributed in whole or in part without the express written permission of the City of Edmonton, Financial and Corporate Services Department. All rights reserved. Copyright © 2021 The City of Edmonton

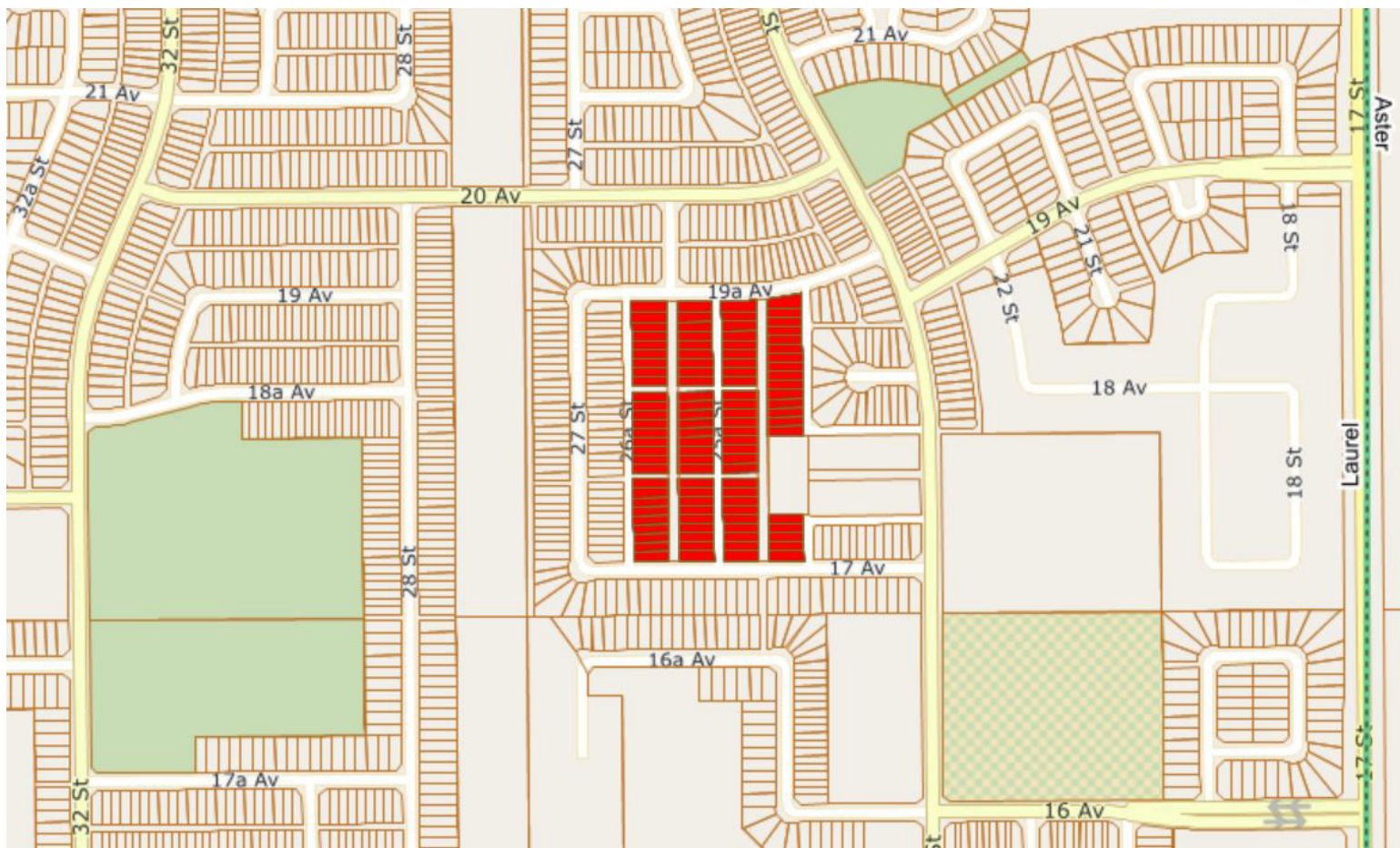
Study Area 3246: Homesteader, Overlanders



 Domtar (3246)

The information provided by this map is for reference purpose only. The City of Edmonton disclaims any liability for the use of this map. This map may not be published, broadcast, redrawn or redistributed in whole or in part without the express written permission of the City of Edmonton, Financial and Corporate Services Department. All rights reserved. Copyright © 2021 The City of Edmonton

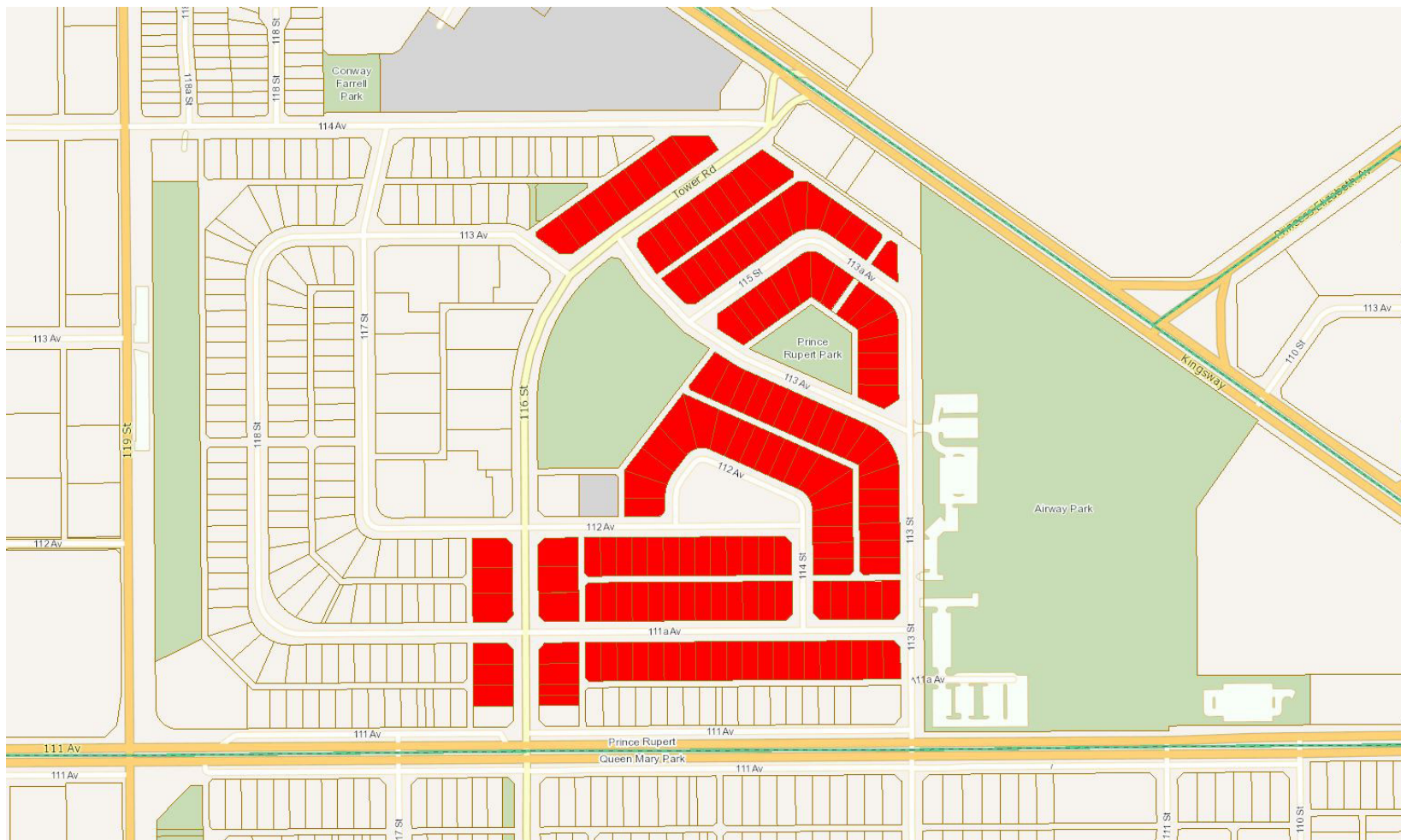
Study Area 3247: Laurel



 Terrace Park (3247)

The information provided by this map is for reference purpose only. The City of Edmonton disclaims any liability for the use of this map. This map may not be published, broadcast, redrawn or redistributed in whole or in part without the express written permission of the City of Edmonton, Financial and Corporate Services Department. All rights reserved. Copyright © 2021 The City of Edmonton

Study Area 3251: Prince Rupert



 Prince Rupert East (3251)

The information provided by this map is for reference purpose only. The City of Edmonton disclaims any liability for the use of this map. This map may not be published, broadcast, redrawn or redistributed in whole or in part without the express written permission of the City of Edmonton, Financial and Corporate Services Department. All rights reserved. Copyright © 2021 The City of Edmonton

