

What We Heard Report: Dunluce Neighbourhood & Alley Renewal

Starting the Conversation,
Building a Project Vision Together
and Exploring Opportunities

June to November 2022

CREATE ADVISE REFINE

SHARE YOUR VOICE
SHAPE OUR CITY

Edmonton

What We Heard Report: Dunluce Neighbourhood & Alley Renewal

Table of Contents

3	Project overview
4	Roadmap to Building Great Neighbourhoods
5	Public Engagement spectrum
5	Decision making process
6	What we asked and how we asked
8	What we heard
	a. Starting the Conversation, Building a Project Vision Together
	b. Exploring Opportunities
12	Next steps



Project overview

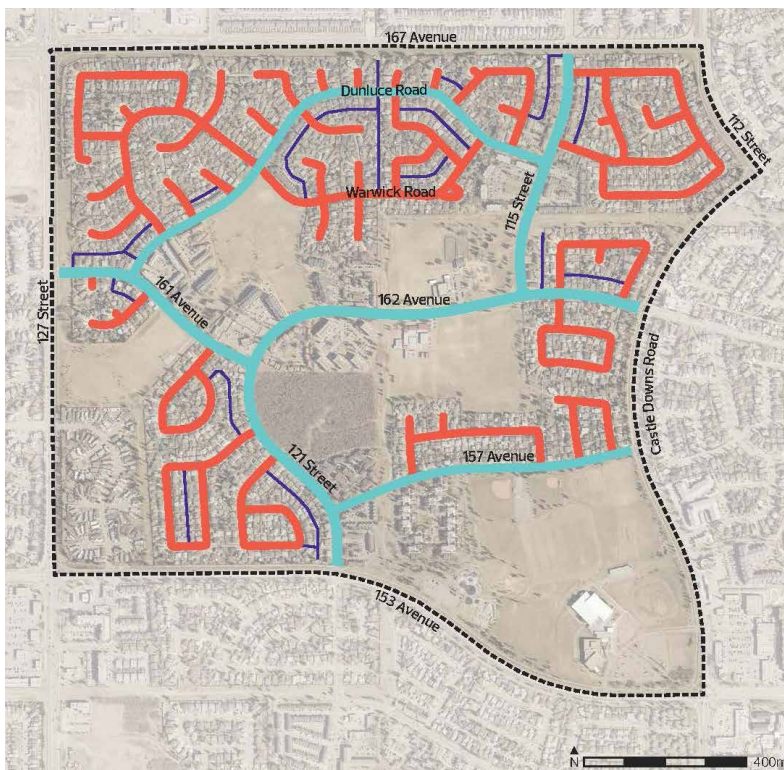
Neighbourhood and Alley Renewal in Dunluce has begun with planning and design, construction is scheduled to start in spring 2025. Through the City's Building Great Neighbourhoods Branch, the Neighbourhood and Alley Renewal Program will reconstruct roads, curbs, alleys, replace street lights, repair sidewalks, and where possible, complete active transportation links.

Alley Renewal is included as part of this project and involves alley reconstruction and repaving, improvements to surface drainage where possible and upgrading of existing lighting to LED fixtures.

The new infrastructure will provide enhancements to the neighbourhood for the next 30 to 50 years.

Cost-sharing opportunities will be made available through the Local Improvement process for sidewalk reconstruction and decorative streetlight upgrades in the neighbourhood. Other opportunities to improve City-owned parks and public spaces will also be explored.

Dunluce Neighbourhood and Alley Renewal Scope Map



 Dunluce neighbourhood boundary

Roads in scope

-  Collector road
-  Local road
-  Alley

Roadmap to Building Great Neighbourhoods

The Neighbourhood Renewal program follows the roadmap below. At each step, the Project Team shares with you how your input will inform the decisions being made.

This report highlights the input received during the **Starting the Conversation, Building a Project Vision Together** and **Exploring Opportunities** stages between June and November 2022.



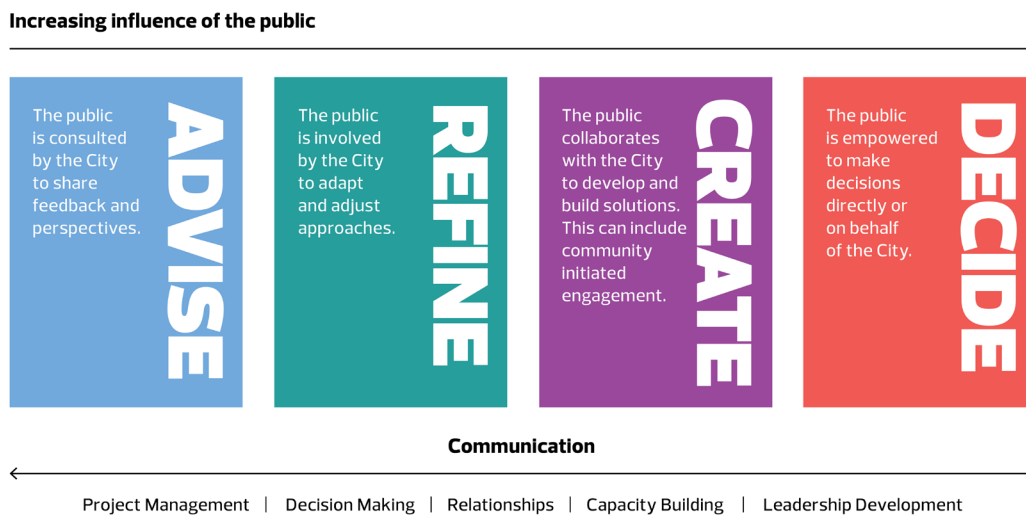
Public engagement spectrum

The City of Edmonton seeks input from citizens to help guide the project. The City's public engagement spectrum below, shows the four levels of influence that the public can have on decisions made by the City throughout the project.

The public was invited to provide input that would help:

- + **ADVISE** on preferences and barriers for communications and public engagement
- + **CREATE** a Vision and Guiding Principles
- + **REFINE** the Project Team's knowledge of neighbourhood assets, opportunities and priorities

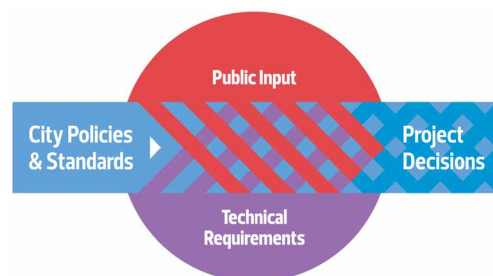
We commit to telling you how public input influences decisions according to the public engagement spectrum.



Decision making process

City policies and programs, such as the Complete Streets Design and Construction Standards, Safe Mobility Strategy and Winter City Strategy, provide the overall direction for Neighbourhood Renewal designs. As each neighbourhood is unique, the Project Team asks for input from residents who live, work and play in the neighbourhood and considers technical aspects such as roadway widths and conflicts with utilities and trees to determine what will fit in the neighbourhood.

This process helps to ensure that the decisions we make are fiscally responsible, align with best practices, consider the existing public and private infrastructure, land uses and activities in the neighbourhood and result in the best outcomes for our city.



What we asked and how we asked

The Dunluce Neighbourhood and Alley Renewal Project Team organized the following opportunities for the public to provide input to help **CREATE** a draft Vision and Guiding Principles for the project and to help **REFINE** the Project Team's understanding of the improvements and opportunities for the neighbourhood.



POP-UP EVENTS AND INTERACTIVE DISPLAY BOARDS

The Project Team popped-up at the Castle Downs Community League Day, Castle Downs YMCA, Castle Downs Park and the Dunluce IV Cívada Centre between September 17 and October 22, 2022 to introduce the project to the community and gather local knowledge from residents and visitors.

Interactive display boards were used at the pop-ups and were set up on-site at the Castle Downs YMCA, Castle Downs Arena, Castle Downs Public Library and the Good Shepherd Church to both share project information and gather local knowledge from residents and visitors.

145 Pop-up participants | **139 Interactive board comments**



FOCUS GROUPS

Focus group meetings were held with the Youth Leadership Group (October 21, 2022) and the Lions Seniors Centre (November 3, 2022) between October 21, 2022 and November 3, 2022 to give them an opportunity to meet with the Project Team and share how they experience living, moving and playing in Dunluce. The same opportunity was offered to the families of the Islamic Academy but no registrations were received.

29 participants



COMMUNITY WALK AND WORKSHOP

A guided community walk and a facilitated workshop were offered on November 1 and 5, 2022 to gather local knowledge and discuss opportunities for improvement. Participants walked along one of three routes and stopped at key locations to share their input about issues and opportunities for Neighbourhood and Alley Renewal. The workshop invited attendees to participate in a Dunluce Vision and Guiding Principles exercise and to further explore issues and opportunities for walking, biking, driving and using parks and City-owned open spaces.

40 Community Walk participants | **33 Workshop participants**



ONLINE SURVEY

An online survey was available for the public to complete from October 12 to November 6, 2022. The survey asked participants to share the ways they experience living, working, playing and moving around the Dunluce neighbourhood.

155 Responses



STAKEHOLDER MEETINGS

Meetings were held with the Dunluce Community League and the Dunluce School Parent Advisory Council to introduce the project, build understanding on how best to communicate with their members and to gather local knowledge on how their members are living, moving and playing in Dunluce. Phone conversations were held with additional stakeholders in the community to build stakeholder lists and to learn how best to communicate and engage with their members.

Two Stakeholder meetings



BUSINESS MEET AND GREET

The Project Team visited businesses in the area to introduce the project and leave behind information material for them to distribute to their customers.

Six Business visits

How we communicated:



We asked residents to visit the project web page to access information about the project and engagement activities.



+ 2,160 newsletters and letters were delivered to all resident and property owner addresses in Dunluce followed up by a postcard reminder sent via postal code drop



+ Road signs (4), pole signs (12), A-frame signs (8) and yard signs (20) were placed throughout the neighbourhood

+ Castle News Ad (September)

+ Emails (75 subscribers and 39 stakeholders)

+ Area stakeholders, such as the Dunluce Community league, distributed project information on our behalf

What we heard

The following sections include a summary of what we heard at all Dunluce engagement activities such as the pop-up events, community walk and workshop, focus group conversations and through the online survey. The summary has been developed to reflect the relevancy, frequency, and diversity of the responses we received based on the questions that were asked to residents.

Starting the Conversation and Building a Project Vision Together

Ideas and insights were collected from participants to help us understand how people experience the neighbourhood today and what can be improved or added to create a neighbourhood for the future.

Here is what we heard from engagement participants:



What are your favourite things about Dunluce today?

- + Lots of available and accessible parks and green spaces
- + A variety of amenities nearby including sports fields, playgrounds and the YMCA
- + Schools are close and walkable
- + Quiet neighbourhood with friendly residents
- + Neighbourhood is very walkable

What are some of the challenges you face living in and moving around your neighbourhood?

- + Sidewalks, roads and alleys that are poorly maintained and are in rough shape with uneven and cracked surfaces
- + Traffic congestion occurs frequently near the schools and the gas station at 121 Street / 161 Avenue
- + Snow windrows are causing accessibility issues as well as ice build up on sidewalks
- + Crime and vandalism are concerns in the area
- + Vehicles are speeding along collector roads such as 162 Avenue and 121 Street and arterials such as Castle Downs Road and 153 Avenue

Thinking about a renewed Dunluce, what would you like to see changed?

- + Repair the aging, crumbling sidewalks/add curb ramps and more pathways and trails through parks
- + Repair the streets and alleys, fix the potholes and add driveway ramps
- + Add more and brighter lighting to parks, public spaces, breezeways and streets
- + Improve drainage and snow/windrow removal – especially along school drop-off and pick-up zones
- + Add traffic calming measures

The Project Team will use this input to **CREATE** a proposed Vision and Guiding Principles for the Dunluce Neighbourhood Renewal Project. This will be shared with the community to gather feedback at the next engagement stage. We heard that people would like the vision to include reference to:

- + Active modes – connections and safety
- + Parks, amenities and gathering spaces
- + Traffic calming measures
- + Lighting for safety
- + Driving and parking
- + Drainage
- + All ages and abilities
- + Character

Exploring Opportunities

The following section includes a summary of what we heard throughout all of the engagement as we explored opportunities. Residents shared ideas and thoughts on various issues and opportunities which could be considered for the Neighbourhood and Alley Renewal Project.

The following key themes were identified by residents under the following four categories: Driving, Biking, Walking/rolling and Parks and Open Spaces.

Driving

- + 162 Avenue, 115 Street, Dunluce Road (near Herb Link Park), 157 Avenue are mentioned most often as locations where respondents found challenges or would like to see improvements
- + Various exit/entry points, such as 161 Avenue/127 Street and 157 Avenue/ Castle Downs Road, are challenging intersections to turn into and out of the community
- + Respondents would like the rough roads and potholes fixed on their streets and alleys
- + Residents who experience speeding vehicles along collector roads like 121 Street, 162 Avenue and Dunluce Road and arterials such as Castle Downs Road would like traffic calming considered
- + Some respondents feel that collector roads and cul-de-sacs are too narrow to safely navigate, citing on-street parking and winter windrows as the main issues – especially along Dunluce Road, 115 Street and 162 Avenue
- + Respondents would like traffic congestion addressed, especially at the schools during pick up/drop off and along 161/162 Avenue at the gas station
- + Drivers experience reduced visibility at their driveways and at intersections due to cars parking too close
- + High curbs are making it difficult for drivers to safely access their driveways; rolling or no curbs are desired
- + Respondents report transit in the area does not come frequently enough for their needs
- + Consider how new housing developments and the new high school will impact roadways
- + Maintaining on-street parking is very important, especially in areas with multi-family dwellings and near sports fields



Biking

- + Respondents would like more bike connections through the neighbourhood and within area parks; particularly connections along the AltaLink east-west corridor and from the AltaLink north-south pathway to 167 Avenue
- + 162 Avenue, the natural area, 157 Avenue and parts of Dunluce Road and 161 Avenue are also popular biking areas
- + People who bike experience bike paths, trails and roads that are in rough shape making them feel less safe
- + Some respondents expressed a concern about any new bike lanes narrowing roadways and thus reducing safety for all users
- + People who bike would like improved and safer crossings throughout the neighbourhood - especially at 167 Avenue
- + Respondents would like enhanced or additional crosswalks to improve crossing safety, especially on crossings along the AltaLink north-south path, 115 Street/162 Avenue, 121 Street/162 Avenue, at the schools and on arterials such as 157 Street/Castle Downs Road and 167 Avenue
- + Respondents report reduced visibility near crosswalks when cars are parked too close
- + Respondents walking would like drainage improved and windrows reduced as they impede accessibility and contribute to icy sidewalks
- + Respondents would feel safer with more and brighter lighting along breezeways, paths and trails and in the natural area
- + Additional waste bins in parks and all through Dunluce would help keep the neighbourhood clean and more aesthetically pleasing

Walking

- + The AltaLink north-south path, Dunluce Road, 115 Street, 162 Avenue and 157 Avenue are highlighted as routes where respondents currently walk or roll most often
- + Respondents want the aging and crumbling sidewalks repaired or replaced, widened in some areas and curb ramps added at intersections
- + There is a desire for a connection between the AltaLink north-south corridor to 167 Avenue and along the AltaLink east-west corridor. There are also requests for widening park paths and trails, specifically the AltaLink north-south path
- + Respondents would like a breezeway or walking connection into the neighbourhood off of the north/west corner of the neighbourhood (167 Avenue/127 Street)
- + Respondents indicate that all of the larger public parks and green spaces in Dunluce are being well used to visit, socialize or gather
- + Respondents would like improvements to park facilities and amenities with benches, picnic tables, BBQ areas, additional waste bins and more tree plantings
- + Respondents suggest encampments and undesirable activities in the natural forest make them feel unsafe
- + There is a desire for more paths and trails to be added to parks and green spaces
- + More and brighter lighting would make park and trail users feel safer
- + There is some desire to fence the off-leash dog area in Orval Allen Park

Parks and Open Spaces



Next steps

Thank you to all who shared input during the **Starting the Conversation, Building a Project Vision Together** and **Exploring Opportunities** stages of engagement.

In spring 2023, the public will be invited to the **Exploring Options and Tradeoffs** stage of engagement for Dunluce Neighbourhood and Alley Renewal. The Project Team will return to the community to confirm the Vision and Guiding Principles and explore options and tradeoffs to understand the preferences of the community. During this stage we will invite you to provide feedback on the design options and to share insights to help refine the options.

Information will also be provided about cost-sharing opportunities for decorative street lights and sidewalk reconstruction through the Local Improvement process.

For more information regarding the Dunluce Neighbourhood and Alley Renewal, upcoming public engagement activities and to subscribe for project updates, please visit edmonton.ca/BuildingDunluce

Working together to make the most out of your neighbourhood.

This is your city and your neighbourhood. We want to understand how you experience your neighbourhood and ask for your input on what we might do to make it better. We will engage and work with you on the renewal of roads, sidewalks, street lights and park spaces. We will also promote other community opportunities to enhance how people live and interact in your neighbourhood. We commit to being open and transparent about how your input is used. Let's make the most out of your neighbourhood.

edmonton.ca/BuildingDunluce

SHARE YOUR VOICE
SHAPE OUR CITY

Edmonton