

The background features a stylized, colorful illustration of a neighborhood. It includes various houses with different roof shapes and colors (green, blue, red), trees, street lamps, and people. One person is shown in a wheelchair, and another is pushing a stroller. The overall style is flat and geometric, with a color palette dominated by greens and blues, accented with red and yellow. The text is overlaid on the left side of the image.

What We Decided Report Calder Neighbourhood Renewal

Spring 2021

| **SHARE** YOUR VOICE
SHAPE OUR CITY

Edmonton

What is Neighbourhood Renewal?

Through the City of Edmonton's Building Great Neighbourhoods and Open Spaces Branch, the Neighbourhood Renewal program has been developed to rehabilitate roads, replace street lights, curbs and gutters, repair sidewalks and connect missing sidewalk links where possible. Opportunities to improve parks and other public spaces are also explored, such as:

- + Trees and landscaping
- + Park furniture and other enhancements
- + Walkways
- + Accessible connections to picnic tables, play spaces and resting spaces

Purpose

This report shares how the City of Edmonton arrived at final designs for the renewal of the Calder neighbourhood.

The report describes when and how the City used policy and program information, public engagement input and technical requirements to make project decisions. The report also illustrates how the project decisions align with the co-created community Vision and Guiding Principles for neighbourhood renewal in Calder.



Message from the Project Manager

On behalf of the City of Edmonton, I am pleased and excited to share that Calder's neighbourhood renewal construction will begin in spring 2021, with completion scheduled for 2023.

The Neighbourhood Renewal program reflects the City's commitment to support our mature neighbourhoods, and ensure that we take a cost-effective, long-term, strategic approach to addressing neighbourhood infrastructure needs.

To honour this commitment, the City takes time to get to know the neighbourhood as well as people's Vision of it for the future. We work to understand what people like about living in Calder, and where there are opportunities for enhancements, to turn these ideas into designs for neighbourhood renewal. The designs are created to reflect a combination of City policies and programs, public engagement input and technical requirements (e.g., current standards and best practices and constraints from existing infrastructure, such as mature trees). Additionally, the designs consider available funding and identify ideas that can be explored outside of neighbourhood renewal as part of community partnerships or other City programs.

Planning in Calder began in the spring of 2019, when we introduced the neighbourhood renewal project to the community and initiated conversations with key stakeholders. Over the planning process, we co-created a Vision and guiding principles for the neighbourhood with residents, asked people for their ideas and then returned with draft designs for their input. We held public engagement sessions, pop-up events and community conversations, invited survey input and engaged with residents to share information and gather feedback.

We've gathered background information and data, walked the neighbourhood, and collaborated with infrastructure service providers—such as underground and above-ground utilities. We've learned as much as we can about the neighbourhood to better inform our conversations with the community and our design decisions.

Our learnings through the public engagement process will conclude in November 2020, when we present the final design for Calder's neighbourhood renewal. The final design reflects what we learned since June 2019, and we will invite people to tell us anything else we should consider before moving into construction.

We received value input and positive feedback as we worked through the design and public engagement process, and would like to thank you for your role in the project. Through this report, we will share what will be constructed in Calder and how we made these decisions. I'm proud to say that much of what we decided is based on public input and in support of Calder's neighbourhood renewal Vision.

As a City, we undertake these projects to support the needs and quality of life of our residents. As a City Project Manager, I am grateful to everyone for sharing their ideas and feedback, and helping our plan evolve into what it is today. It has been great working with the community to steward Calder's infrastructure improvements and to help bring your Vision for a great neighbourhood to life.

**Thank you,
Laura Shewchuk
Project Manager,
Calder Neighbourhood Renewal**

Building Great Neighbourhoods

Working together to make the most out of your neighbourhood.

Great neighbourhoods are the building blocks of a great city, and the City of Edmonton is committed to building great neighbourhoods by investing taxpayer dollars in reconstruction to enhance livability and longevity.

Building Great Neighbourhoods is designed to improve infrastructure and increase vibrancy in Edmonton's mature neighbourhoods. It is a cost-effective, long-term, strategic approach to address infrastructure needs such as rebuilding and renewing roads, sidewalks and street lights.

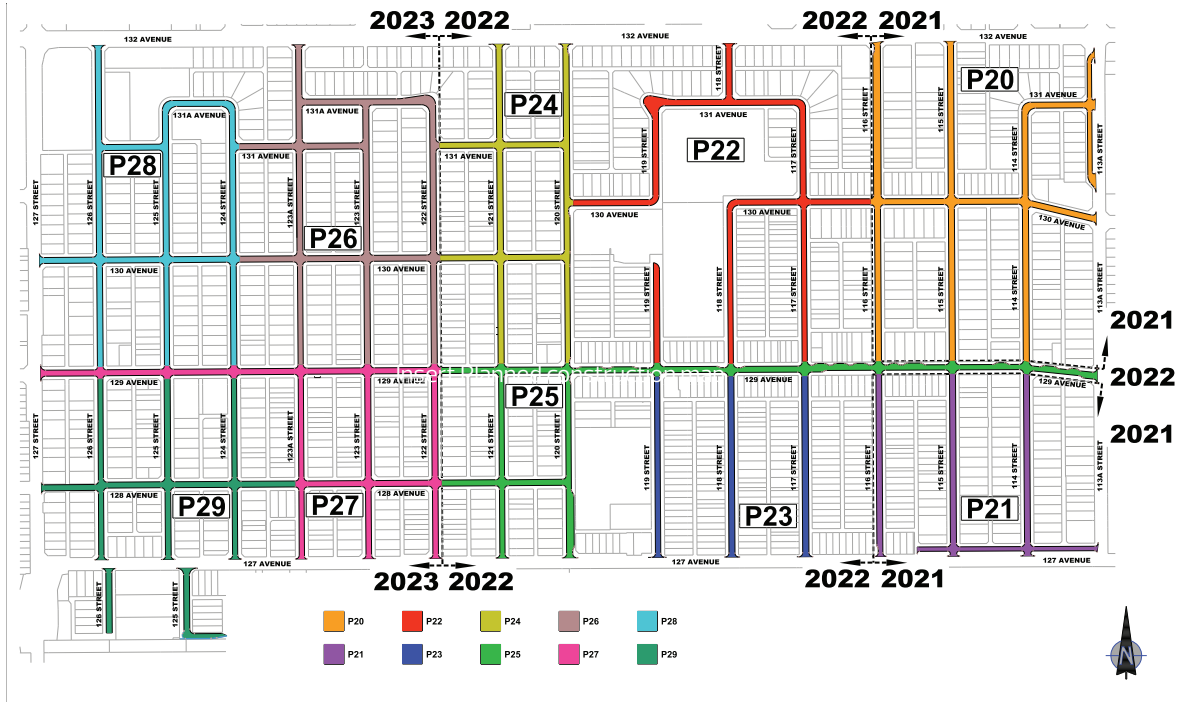
Neighbourhood Renewal in Calder

In spring 2021, neighbourhood renewal construction will begin in Calder and includes the following:

- + Improving connections for people of all ages and abilities who walk and bike, drive and take public transit
- + Enhancements to park spaces to make them more safe, accessible and welcoming
- + New trees and enhanced green spaces to add to the natural beauty of the area
- + Providing lighting to improve safety
- + Upgrading commercial business areas to make them more appealing to everyone

The reconstruction in Calder is expected to take three years, with anticipated completion in fall 2023.

Planned construction staging for roads and sidewalks



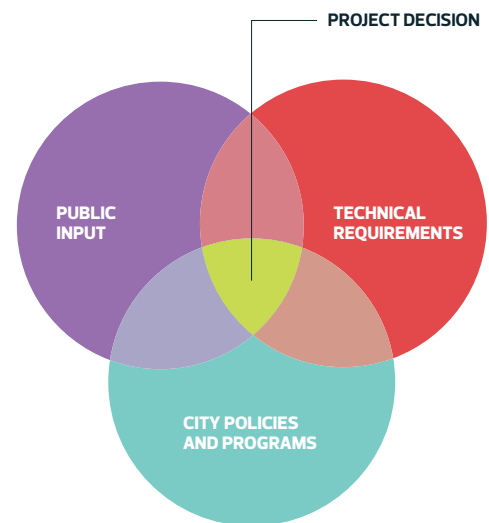
The planned construction staging is subject to change depending on weather conditions, coordination with utilities and unforeseen design and construction issues.

Making Neighbourhood Renewal decisions

Policy and program information, public engagement input and technical requirements

The City makes decisions using a combination of policy and program information, public engagement input, technical requirements and available funding. This process helps to ensure that the decisions we make are fiscally responsible, align with best practices, consider the existing public and private infrastructure, land uses and activities in the neighbourhood, and result in the best outcomes for our city.

The role of public engagement input is to help the City consider what is important to community members in Calder, as well as how the neighbourhood renewal construction decisions will affect them. The City policies and programs, technical requirements and public engagement input include:



City Policies and Programs

- + City Plan
- + Public Engagement Policy
- + Active Transportation Policy (Sidewalk Strategy and the Bicycle Transportation Plan)
- + Local Improvement Policy
- + BREATHE – Green Network Strategy
- + Winter City Design Guidelines
- + Vision Zero (Traffic Safety Strategy)
- + Community Traffic Management Policy
- + Snow and Ice Control Policy
- + Dogs in Open Spaces Strategy
- + Corporate Tree Management Policy
- + Accessibility for People with Disabilities Policy C602
- + Bike Plan
- + and more

Public Engagement Input

- + **REFINE** approach to public engagement
- + **CREATE** Neighbourhood Renewal Vision and Guiding Principles
- + **REFINE** understanding of neighbourhood assets, opportunities, and priorities
- + **REFINE** draft options based on the consideration of benefits and trade-offs
- + **REFINE** draft designs and neighbourhood priorities
- + **ADVISE** on Final Neighbourhood Design
- + **ADVISE** on construction for Neighbourhood Renewal
- + **DECIDE** on Local Improvements

Technical Requirements

- + Infrastructure assessments including utilities
- + Complete Streets Design and Construction Standards
- + Designing for all ages and abilities (Universal design i.e., Access Design Guide)
- + Crime Prevention Through Environmental Design (CPTED)

The City's approach to public engagement input

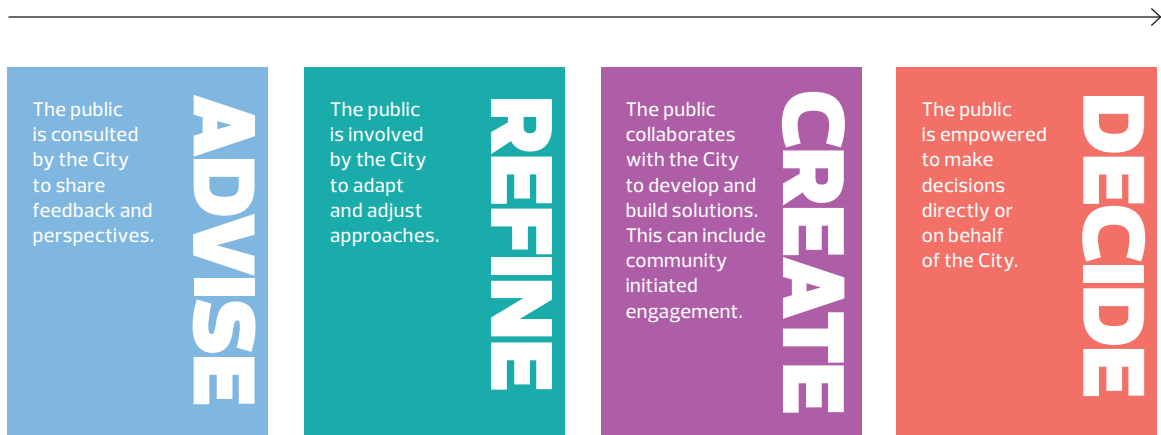
People living in and with an interest in Calder were invited to provide input into the City's decision-making process for neighbourhood renewal at various stages along the roadmap below.



Influence of the public

The City of Edmonton solicited input from citizens to help guide the project. The City's public engagement spectrum below shows the four distinct levels of influence that the public had on decisions made by the City throughout the project.

Increasing influence of the public



The Calder neighbourhood renewal public engagement input opportunities included:

Timeline	Steps	Public engagement	Number of participants	Outcome
April 2019 to August 2019	<p>Starting the Conversation</p> <p>Share information about the project and invite public input into the approach to public engagement</p>	<p>A newsletter to residents and property owners was sent to notify the community of the Calder neighbourhood renewal project Community Engagement Advisory Group formed and the first meeting occurred August 13, 2019, to REFINE the approach to public engagement and share project information</p>	2400+	A public engagement plan

Timeline	Steps	Public engagement	Number of participants	Outcome
April 2019 to June 2019	Building a Project Vision Together	Visioning boards around the neighbourhood, one online survey, two community pop-ups and eight small group community conversations to ADVISE on what exists and what is needed for infrastructure in the neighbourhood	240+	A draft Vision and Guiding principles that describes what the community could look like in the future and what is most important to community members
	Invite public input to support the development of a Vision and Guiding Principles Invite public input to confirm the draft Vision and guiding principles	Visioning Task Group formed and the first meeting occurred on April 25, 2019 Workshop-style public engagement session to explore ideas for neighbourhood renewal and CREATE a draft vision and guiding principles		A final Vision and Guiding Principles for neighbourhood renewal in Calder
August 2019 to November 2019	Exploring Opportunities	Public walk and workshop, one online survey and community conversations	50+	A compilation of opportunities, issues, and ideas for neighbourhood renewal Draft design options
	Invite public input to understand the way community members move, play and work in their neighbourhood Invite public input to understand the existing community infrastructure Use public input to create design options			
November 2019 to January 2020	Exploring Options and Trade-offs	Two community popups, an online survey and two drop-in public engagement sessions to REFINE the ideas for the draft design options	160+	Refined neighbourhood design based on the options and tradeoffs discussion List of prioritize design options
	Invite public input to help adapt and adjust our approach to design options and how to prioritize the use of available resources Use public input to prioritize and REFINE draft design options			

Timeline	Steps	Public engagement	Number of participants	Outcome
June 2020 to July 2020	<p>Community Feedback on Draft Design</p> <p>Invite public input to adjust draft design and confirm reflection of vision and guiding principles</p> <p>Use public input to improve and finalize the design</p>	Three public webinars, an online survey and an online engagement question tool to ADVISE on the refined design	55+	Final designs based on public feedback
September 2020 to December 2020	<p>Community Feedback on Final Design</p> <p>Invite the public to share feedback and perspectives on the final design</p> <p>Use public input to confirm final design</p>	A final design video, web page design summaries, an online survey to gather perspectives on the final design and an online question form on the project website.		Final design based on public feedback
February 2021 to April 2021	<p>Preparing for Construction</p> <p>Use public input to inform the plans for construction and to make a decision on sidewalk reconstruction and also decorative street lights for Calder</p>	A public information opportunity to ADVISE on construction for neighbourhood renewal and for property owners to DECIDE on the Local Improvements for sidewalk reconstruction and decorative street lights for Calder through the Local Improvement Notice process	55+	A plan for construction that has considered the needs of the community and the results of the sidewalk reconstruction and decorative street light petition process

Public engagement also incorporates input that the City of Edmonton project manager received through emails, letters and phone calls.

Calder Neighbourhood Renewal Vision and Guiding Principles

The Vision and Guiding principles for neighbourhood renewal were co-created by the public and the City, and refined throughout the public engagement process. The Vision identifies what the public imagines for the future of Calder, and the guiding principles guide our decision-making by indicating the aspects of the neighbourhood that are most important to maintain and improve. We consider these when technical constraints or public consensus are impacting design decisions.

Vision

“Calder is a well-maintained, diverse, historical rail community. Bright and happening for all ages and backgrounds, Calder is rich with natural beauty, heritage and community pride. It is a neighbourhood full of connections to services and amenities for all ages. Calder is unique in its historical significance and how together we live, work, play and gather. It has a small town feel within a big city.”

Guiding principles



Greenery: Calder features a natural beauty full of green spaces and tree lined streets.



Accessibility and connections: Calder provides freedom of movement through safe and accessible connections for all ages and abilities, whether they walk, bike, drive or take transit in the community.



Historical pride: Calder values and maintains its unique character stemming from its strong history, heritage and community pride.



Sense of community: Calder prides itself on the neighbourhood's diversity and togetherness, fostered through friendliness of residents, public gathering spaces, public art, regular community programs, events and initiatives.



Local amenities: Calder offers a wide range of services and amenities in and around the neighbourhood.



Neighbourhood safety and attraction: Calder feels safe and inviting with friendly people, active public spaces, cared for properties and well-lit parks and pathways.

The Vision and Guiding Principles were shared with the public at multiple events throughout the public engagement process for them to refer to when sharing feedback on the designs.

What we heard along the way

The Calder neighbourhood renewal project team developed What We Heard reports following key public engagement activities and published these on our website, and also presented this information on display boards at subsequent public engagement events. These reports and display boards were created to keep people informed about the public input the City heard.

Public input helped to inform the creation of design for Calder's neighbourhood renewal, which were presented at public engagement sessions and can be viewed at edmonton.ca/BuildingCalder. We also shared the What We Heard reports and displays on the project webpage and at the public engagement sessions.

The What We Heard reports, display boards and handouts describe how feedback was used to develop the Vision and Guiding Principles, ideas for neighbourhood renewal, the neighbourhood design, plans for construction and the Local Improvement results.



What we decided

This section presents the final project decisions for neighbourhood renewal in Calder, including the key City Policies and programs, public engagement input and technical requirements that informed the City's decisions related to each topic.

To view the final design, please visit edmonton.ca/BuildingCalder.

Note: All project decisions are subject to final approvals and funding.

Legend for “What we accounted for to make our decisions”

The City uses policies and programs, public engagement input and technical requirements to make neighbourhood renewal decisions.

This report uses three coloured icons to illustrate which decision-making criteria is a policy or program, public engagement input, or a technical requirement. You will see these icons in the “What we accounted for to make our decisions” column in each table on the following page:

The decision making criteria are:



Public engagement input/Vision and Guiding Principles/What We Heard



Technical requirements



City policies and programs

Streets and Connections

Opportunity for new boulevards on 121 Street (between 130 Avenue and 132 Avenue)

What we decided

- + To maintain existing on-street parking and two-way traffic
- + To plant trees behind curbside sidewalks
- + To replace existing sidewalks with curbside sidewalks instead of boulevard sidewalks to avoid impacts to existing landscaping

What we accounted for to make our decisions



Public Engagement Input

In alignment with the project Vision and Guiding Principles:

- + Improved sidewalks and maintaining parking enhance connectivity and accessibility of the area
- + New trees will beautify the area



What We Heard

New boulevards on 121 Street could be added to enhance safety for people who walk

- + Planting new trees will beautify 121 Street
- + Fast moving vehicles were a concern on this street
- + Community members were concerned with narrowing the road and the impact on the comfort of people who drive
- + Community members were concerned with impacts to private property and extra maintenance to clean up after trees.



Technical Requirements

- + The design is informed by and will support landscaping design standards
- + The design addresses the need to work around existing underground and above ground utilities



City Policies and Programs

- + The City follows universal design (i.e. Access Design Guide) to support access and use for people of all ages and abilities
- + BREATHE – Green Network Strategy promotes an adequate supply, quality and distribution of open space, that is accessible and inclusive for all



New Sidewalks

What we decided

- + To add new sidewalk connections where possible
- + All existing sidewalks within the project limits will be reconstructed if property owners decide to proceed with the Local Improvement tax levy
- + New trees will be considered along sidewalks and roadways where there are none currently planted
- + Widen existing sidewalks along key walking routes

What we accounted for to make our decisions



Public Engagement Input

In alignment with the project Vision and Guiding Principles:

- + Pathways increase connectivity and accessibility for people of all ages and abilities
- + Additional landscaping and greenery enhance the natural beauty



What We Heard

- + Community members believe it is important to limit impacts on mature trees and greenery
- + Accessibility for people of all ages and abilities would be improved through curb ramps and sidewalks on both sides of the streets



Technical Requirements

- + The design is informed by and will support landscaping design standards
- + The design addresses the need to work around existing underground and above ground utilities
- + New landscaping considers sight lines and maintaining visibility
- + Sidewalk widths in some locations are constrained due to existing conditions such as mature trees
- + Design and Construction Standards Volume 5 – Landscaping 2017



City Policies and Programs

- + The City follows universal design (i.e. Access Design Guide) to support access and use for people of all ages and abilities
- + The City of Edmonton's 2010 Corporate Tree Policy supports the orderly development and growth of the City's tree inventory and the protection of the tree canopy
- + The Way We Green promotes managing stormwater runoff by providing green spaces and plantings for Low Impact Development
- + BREATHE – Green Network Strategy promotes an adequate supply, quality and distribution of open space, that is accessible and inclusive for all
- + Complete Streets Design and Construction – Roadways 2018



Seating Areas

What we decided

- + To add bike racks at some seating areas to provide secure spaces for people to leave their bike and visit destinations
- + To add pedestrian-oriented lights to enhance safety for people who walk when it is dark
- + To add waste bins to help keep the community clean
- + To add community bulletin boards to provide spaces for community messaging at seating areas with high pedestrian traffic
- + To add new seating areas and benches to create places for people to rest and connect with their neighbours
- + Northeast corner of 126 Street and 131 Avenue
- + Southeast corner of Miwasin park
- + Northeast corner of Touchdown Park
- + Northwest corner of Keyano Park
- + Northwest corner of 116 Street and 129 Avenue



What we accounted for to make our decisions



Public Engagement Input

In alignment with the project Vision and Guiding Principles:

- + Enhanced park amenities create a more welcoming, connected and safe park space and encourage multi-generational use
- + Community bulletin boards and seating areas create a sense of community



What We Heard

- + Amenities (i.e., waste bins, benches, sidewalk lighting) would encourage people to use the neighbourhood seating areas
- + Seating areas would help those with mobility challenges to sit and rest while travelling through the neighbourhood
- + Seating areas would be a welcome addition to the neighbourhood



Technical Requirements

- + The design is informed by and will support landscaping design standards
- + The design addresses the need to work around existing underground and above ground utilities
- + Design and Construction Standards Volume 5 – Landscaping 2017



City Policies and Programs

- + The City follows universal design (i.e. Access Design Guide) to support access and use for people of all ages and abilities
- + The Way We Green promotes managing stormwater runoff by providing green spaces and plantings for low impact development
- + BREATHE – Green Network Strategy promotes an adequate supply, quality and distribution of open space, that is accessible and inclusive for all
- + Complete Streets Design and Construction – Roadways 2018

Bus stop amenities and enhancements

What we decided

- + To move the existing bus stop at the southeast corner of 123 Street and 129 Avenue to the southeast corner of 123A Street and 129 Avenue
- + To work with Edmonton Transit to plan for appropriate amenities at bus stops located on 129 Avenue based on ridership data and the new Bus Network Redesign implementation

What we accounted for to make our decisions



Public Engagement Input

In alignment with the project Vision and Guiding Principles:

- + Connectivity and accessibility for people of all ages and abilities is enhanced by the newly located bus stops



What We Heard

- + Decisions for locations of bus stops should be informed by the number of passengers who use the space



Technical Requirements

- + The design addresses the need to work around existing underground and above ground utilities
- + Edmonton Transit ridership data



City Policies and Programs

- + The City follows universal design (i.e. Access Design Guide) to support access and use for people of all ages and abilities
- + Complete Streets Design and Construction – Roadways 2018
- + Bus Network Redesign



School traffic flow improvements

What we decided

- + To add concrete pads along the west side of 118 Street in the existing boulevard between existing trees to create a safe and dedicated place for buses to drop off students in front of the Calder Elementary School
- + To add concrete pads along the east side of 119 Street in the existing boulevard between existing trees to create a safe and dedicated place for buses to drop off students of St. Edmund Catholic School
- + To convert 118 Street between 129 and 130 Avenue to one-way southbound traffic
- + To convert 130 Avenue between 117 and 118 Street to one-way westbound traffic
- + To remove existing on-street parking along the south side of 130 Avenue between 117 and 118 Street
- + To remove existing on-street parking along the west side of 118 Avenue from the alley south of Calder Elementary School to 129 Avenue during school hours
- + To implement a no parking restriction during school hours on the east side of 118 Street between 131 and 132 Avenue

What we accounted for to make our decisions



Public Engagement Input

In alignment with the project Vision and Guiding Principles:

- + Connectivity and accessibility is maintained in this area



What We Heard

- + Traffic around the schools makes it difficult for people who drive to travel through the area
- + Traffic and parking obscure sightlines and make crossing the street feel unsafe for people who walk
- + Community members believe it is important to limit impacts on mature trees and greenery when addressing congestion
- + Staff from Calder School having to park on the street due to lack of room in the parking lot



Technical Requirements

- + The design addresses the need to work around existing underground and above ground utilities



City Policies and Programs

- + The City follows universal design (i.e. Access Design Guide) to support access and use for people of all ages and abilities
- + BREATHE – Green Network Strategy promotes an adequate supply, quality and distribution of open space, that is accessible and inclusive for all.
- + Complete Streets Design and Construction – Roadways 2018



Traffic calming

What we decided

- + To propose adding curb extensions to enhance the feeling of safety for those who walk at the following locations:
 - 129 Avenue and 120 Street
 - 129 Avenue and 119 Street
 - 129 Avenue and 118 Street
 - 130 Avenue and 120 Street
 - 132 Avenue and 120 Street
 - 132 Avenue and 116 Street
 - 127 Avenue and 120 Street
 - 127 Avenue and 116 Street
- + To propose adding zebra marked crosswalks to provide safer crossings for people who walk at the following locations:
 - 130 Avenue and 119 Street
 - 130 Avenue and 117 Street

What we accounted for to make our decisions



Public Engagement Input

In alignment with the project Vision and Guiding Principles:

- + Improving the accessibility and connectivity for people of all ages and abilities
- + Adding infrastructure to make the area safer for those who walk



What We Heard

- + Shortcutting and fast moving vehicles occur on some roads in the neighbourhood
- + Vehicles travel fast along 129 Avenue and along 121 Street
- + Shortcutting is experienced on 115 Street, 116 Street, 120 Street and 126 Street
- + Pedestrians feel unsafe at some crossings in Calder



Technical Requirements

- + The design is informed by and will support landscaping design standards
- + The design addresses the need to work around existing underground and above ground utilities
- + Curb extensions will be designed to minimize impacts on parking, turning movements, calm traffic, and accommodate emergency services and drainage
- + Curb extensions support on street shared-bike facility design



City Policies and Programs

- + The City follows universal design (i.e. Access Design Guide) to support access and use for people of all ages and abilities
- + Design and Construction Standards Volume 5 – Landscaping 2017
- + Complete Streets Design and Construction – Roadways 2018
- + Winter Design Guidelines promotes transforming Edmonton into a Great Winter City through design choices such as landscaping which retains colour throughout the year
- + Community Traffic Management Policy supports curb extensions to improve safety by ensuring that parked cars maintain a distance from the intersection, reduce driver speeds, deter shortcutting and reduce the crossing distance for pedestrians



Bike routes and facilities

129 Avenue shared-use path and 120 Street shared-road bike facility

What we decided

- + A shared use-path is proposed along the south side of 129 Avenue from 127 Street to 113a Street
- + Create a bike facility that could be used by people of all ages
- + Maintain on-street parking and existing trees where possible.
- + Remove on-street parking along the south side of 129 Avenue between 127 and 113a Street
- + Add on-street parking bays along the north side of 129 Avenue between 117 and 113a Street
- + A shared road bike facility is proposed along 120 Street from 127 Avenue to 132 Avenue
- + Curb extensions are proposed at four locations to help slow traffic and increase safety for people who bike and drive:
 - 120 Street and 132 Avenue
 - 120 Street and 130 Avenue
 - 120 Street and 129 Avenue
 - 120 Street and 127 Avenue

What we accounted for to make our decisions



Public Engagement Input

In alignment with the project Vision and Guiding Principles:

- + Improving accessibility and connections for those who bike
- + Adding infrastructure that will improve safety for those who walk



What We Heard

- + Community members were interested in bike routes that connect important parts of Calder (i.e., green spaces, commercial areas and schools)
- + Losing on-street parking was a concern for people
- + Participants suggested that the design for bike lanes should consider plans for other City projects (i.e., Metro Line LRT)
- + Bike facilities that cause minimal impact on traffic flow are preferred



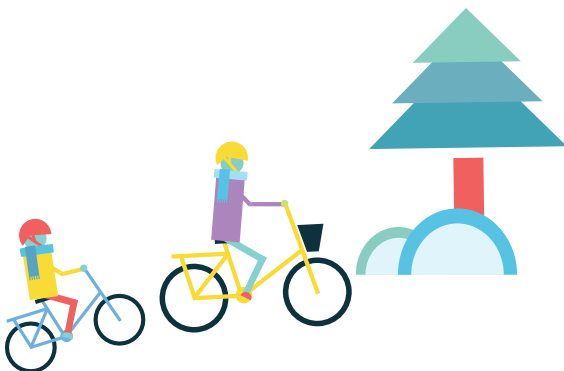
Technical Requirements

- + The design is informed by and will support landscaping design standards
- + The design addresses the need to work around existing underground and above ground utilities
- + Adjusting lane widths to conform with Complete Streets Standards
- + Current parking utilization data for 129 Avenue



City Policies and Programs

- + The City follows universal design (i.e. Access Design Guide) to support access and use for people of all ages and abilities
- + Complete Streets Design and Construction – Roadways 2018
- + Protected bike infrastructure helps to achieve the long-term goal of the City's Vision Zero: zero traffic fatalities and serious injuries
- + 2009 Bicycle Transportation Plan is being enhanced by the development of an Edmonton Bike Plan to be completed in 2020 – both plans support the vision of a connected and accessible city by guiding design choices which help people feel safe and comfortable riding their bikes



Commercial area improvements

129 Avenue commercial area improvements

What we decided

- + To install curb extensions to support the bus stop, reduce speeds and shorten pedestrian crossing distances for the north to south pedestrian movement along 120 Street and 119 Street
- + To maintain existing on-street parking on the north side of 129 Avenue
- + To install marked and decorative crosswalks to enhance the awareness of people who drive to the presence of people crossing the Avenue
- + To install wider sidewalks and concrete areas along the north side of 129 Avenue
- + To install new pedestrian-oriented lights to increase pedestrian visibility in the dark
- + To install new benches to create a community space for people to rest and connect with their neighbours.
- + To install bike racks for cyclists to secure their bikes to while they visit the area
- + Potential gateway features/ landscape areas at the intersection of 120 Street, 119 Street and 129 Avenue to establish a sense of arrival
- + To replace the existing trees with new trees that are compatible with overhead utility wires

What we accounted for to make our decisions



Public Engagement Input

In alignment with the project Vision and Guiding Principles:

- + Improving accessibility and connections for people of all ages and abilities
- + Additional amenities to increase the safety and sense of community of the area
- + Beautifying Calder through green spaces and trees



What We Heard

- + Amenities (i.e., waste bins, benches, sidewalk lighting, decorative features and placemaking) would encourage people to visit the area
- + Improving access to goods and services closer to home through support of the existing commercial area.
- + Community members hoped that mature trees would be maintained
- + Improvements in this area would create a natural gathering place for community members
- + Enhancements in this area could add to the activity and viability of this neighbourhood commercial area.



Technical Requirements

- + Design considers sightlines for the new trees
- + The design is informed by and will support landscaping design standards
- + The design addresses the need to work around existing underground and above ground utilities
- + Current condition of aging trees and future impact to new infrastructure



City Policies and Programs

- + Community Traffic Management Policy supports curb extensions to improve visibility by ensuring that parked cars maintain a distance from the intersection, reduce driver speeds, deter shortcutting and reduce the crossing distance for pedestrians
- + The City follows universal design (i.e. Access Design Guide) to support access and use for people of all ages and abilities
- + Corner Store Program to enhance neighbourhood commercial areas
- + Section 6 of The Way We Move promotes a walkable environment
- + Complete Streets Design and Construction – Roadways 2018

Parks

Miwasin Park, 124 Street and 131a Avenue

What we decided

- + To add a new east to west pathway between 124 Street and 125 Street along the south side of the park making it easier for people who walk to move around the park
- + To widen the existing diagonal pathway which connects the southeast and northwest corners of the park
- + To install waste bins, benches, and pedestrian-oriented lighting along the pathways to enhance user comfort and safety
- + Trees and shrubs will be maintained by the City to ensure good visibility and promote safety

What we accounted for to make our decisions



Public Engagement Input

In alignment with the project Vision and Guiding Principles:

- + New connections improve accessibility and connectivity
- + New amenities and lighting improve the safety and attraction of the area



What We Heard

- + An improved east to west pathway through the park would enhance connectivity and access
- + Amenities (i.e., waste bins, benches, pedestrian-oriented lighting) would encourage people to use the park
- + Trim existing trees and consider planting new trees
- + An opportunity for community-led public art would be welcomed



Technical Requirements

- + The design addresses the need to work around existing underground and above ground utilities
- + Removal of two trees for the new east-west pathway
- + Pathway on south edge of park exits into alley



City Policies and Programs

- + The City follows universal design (i.e. Access Design Guide) to support access and use for people of all ages and abilities
- + Design and Construction Standards Volume 5 – Landscaping 2017
- + Parks and Roads Operations maintenance program for parks and open spaces



Parks

Chalmers Park, 123 Street and 131a Avenue

What we decided

- + To add new sidewalks on the north and south sides of the park and a new north-south pathway through the park to make it easier for people who walk to move around the park
- + To add new picnic tables to encourage park use and provide a place for community members to gather
- + Trees and shrubs will be maintained by the City to ensure good visibility and promote safety
- + To install waste bins, benches, and pedestrian-oriented lighting along the north-south pathway to enhance user comfort and safety
- + Add new planting areas at the pathway entrances of the park

What we accounted for to make our decisions



Public Engagement Input

In alignment with the project Vision and Guiding Principles:

- + Improving accessibility and connectivity for people of all ages and abilities
- + Additional amenities create a sense of community and increase the attraction of the area



What We Heard

- + Amenities (i.e., picnic tables, waste bins, benches, pedestrian-oriented lighting) would encourage people to use the park
- + Maintaining playground equipment is important for community members
- + An enhanced pathway would improve connectivity for people who walk and bike in the park
- + Community members would appreciate additional recreational activities such as exercise equipment



Technical Requirements

- + The design addresses the need to work around existing underground and above ground utilities



City Policies and Programs

- + The City of Edmonton's 2010 Corporate Tree Policy supports the orderly development and growth of the City's tree inventory and the protection of the tree canopy
- + The City follows universal design (i.e. Access Design Guide) to support access and use for people of all ages and abilities
- + Complete Streets Design and Construction - Roadways 2018
- + Design and Construction Standards Volume 5 - Landscaping 2017
- + Neighbourhood Park Development Program could be accessed by the community to develop new or replace current amenities such as playground equipment
- + Parks and Roads Operations maintenance program for parks and open spaces



Parks

Touchdown Park, 128 Avenue and 124 Street

What we decided

- + To add new pathways in the park to make it easier for people who walk to move around the park
- + To add a new seating area with the opportunity for community-led public art to reflect the railway and 124 Street streetcar history
- + To add new picnic tables to encourage park use and provide a place for community members to gather
- + Trees and shrubs will be maintained by the City to ensure good visibility and promote safety
- + To install waste bins, benches, and pedestrian-oriented lighting along the pathways to enhance user comfort and safety



What we accounted for to make our decisions



Public Engagement Input

In alignment with the project Vision and Guiding Principles:

- + Improving accessibility and connectivity for people of all ages and abilities
- + Additional amenities create a sense of community and increase the attraction of the area



What We Heard

- + Amenities (i.e., picnic tables, waste bins, benches, pedestrian-oriented lighting) would encourage people to use the park
- + Connectivity would be enhanced by a walking loop and would encourage the use of the park by community members of all ages
- + A space for community-led public art would be welcomed



Technical Requirements

- + The design addresses the need to work around existing underground and above ground utilities



City Policies and Programs

- + The City of Edmonton's 2010 Corporate Tree Policy supports the orderly development and growth of the City's tree inventory and the protection of the tree canopy
- + The City follows universal design (i.e. Access Design Guide) to support access and use for people of all ages and abilities
- + Design and Construction Standards Volume 5 – Landscaping 2017
- + Neighbourhood Park Development Program (NPDP)
- + Parks and Roads Operations maintenance program for parks and open spaces

Parks

Calder Memorial Park, 128 Avenue and 120 Street

What we decided

- + To replace and widen the existing pathway through the park to make it easier for people who walk to move around the park
- + Trees and shrubs will be maintained by the City to ensure good visibility and promote safety
- + To install waste bins, a bench, and pedestrian-oriented lighting along the pathway to enhance user comfort and safety

What we accounted for to make our decisions



Public Engagement Input

In alignment with the project Vision and Guiding Principles:

- + Improving accessibility for people of all ages and abilities
- + Improving amenities that are important to community members
- + Regular upkeep and additional amenities will maintain the safety and attraction of the area



What We Heard

- + Amenities (i.e., waste bins, benches, pedestrian-oriented lighting) would encourage people to use the park
- + Maintain the horseshoe pits and explore other recreational activities such as a community garden



Technical Requirements

- + The design addresses the need to work around existing underground and above ground utilities



City Policies and Programs

- + The City of Edmonton's 2010 Corporate Tree Policy supports the orderly development and growth of the City's tree inventory and the protection of the tree canopy
- + The City follows universal design (i.e. Access Design Guide) to support access and use for people of all ages and abilities
- + Design and Construction Standards Volume 5 - Landscaping 2017
- + Neighbourhood Park Development Program (NPDP)
- + Parks and Roads Operations maintenance program for parks and open spaces



Parks

Keyano Park, 131 Avenue and 118 Street

What we decided

- + To add a new pathway to the existing playground to improve accessibility for people of all ages and abilities
- + To replace and widen the existing pathway through the park to make it easier for people who walk to move around the park
- + To add new picnic tables to provide residents with a new amenity
- + Trees and shrubs will be maintained by the City to ensure good visibility and promote safety
- + To install waste bins, a bench, and pedestrian-oriented lighting along the pathway to enhance user comfort and safety
- + To add a new seniors-focused seating area with an opportunity for community-led public art

What we accounted for to make our decisions



Public Engagement Input

In alignment with the project Vision and Guiding Principles:

- + Improving connectivity and accessibility for people of all ages and abilities
- + New amenities to create a sense of community for the residents of Calder and improve the overall safety and attraction of the area



What We Heard

- + Amenities (i.e., picnic tables, waste bins, benches, pedestrian-oriented lighting) would encourage people to use the park
- + Community members enjoy using this space for activities such as bocce ball and lawn bowling
- + Residents enjoy using the berm for winter sledding



Technical Requirements

- + The design addresses the need to work around existing underground and above ground utilities



City Policies and Programs

- + The City of Edmonton's 2010 Corporate Tree Policy supports the orderly development and growth of the City's tree inventory and the protection of the tree canopy
- + The City follows universal design (i.e. Access Design Guide) to support access and use for people of all ages and abilities
- + Design and Construction Standards Volume 5 – Landscaping 2017
- + Neighbourhood Park Development Program (NPDP)
- + Parks and Roads Operations maintenance program for parks and open spaces





Community-led projects

A series of concept options were created as opportunities to highlight the historic character of Calder, as well as options to create a sense of place and community.

These enhancements would move forward in Calder as community-led projects. A community-led project is carried out by a volunteer group of neighbourhood members. These volunteers create a Vision for the project, a schedule and a budget. These projects can occur on or in public or private land and facilities. Community-led projects are fundraised by the volunteers. The City of Edmonton, the Government of Alberta and Edmonton Community Foundation do have a number of grants that may help to contribute to these projects. Other partnerships with businesses or associations can also fund community projects.

During the Community Feedback on Draft Design stage in July 2020, we asked which of the community-led projects participants would be interested in helping to pursue as a volunteer.

We also invited participants to provide more specific feedback on the Community Hub which was previously identified as a top priority. Participants were asked if pedestrian lighting would encourage people to travel through and use the spaces and services for community and family activities, as well as any other suggestions to improve the draft design.



Placemaking

Placemaking refers to projects that can be used to reflect the character of the community.

These projects can help create a 'place' for the enjoyment of all age groups where they feel safe and comfortable. Successful placemaking can be achieved in a variety of ways to address site-specific issues and challenges. Opportunities for placemaking in Calder that have been identified include the creation of a Community Hub

Community Hub

What we decided

- + To install pedestrian-oriented lights along the west sides of 120 and 119 Street between 130 Avenue and 127 Avenue
- + Programming and collaboration for a community hub be included in the design as a community-led project
- + That the community works with the Neighbourhood Resource Coordinator to pursue the development of the programming in the potential community hub

What we accounted for to make our decisions



Public Engagement Input

In alignment with the project Vision and Guiding Principles:

- + Creating a sense of community for the residents of Calder



What We Heard

- + A community hub could help support neighbours to meet and get to know each other
- + Community members indicated that programming and activation could enhance a community hub
- + A community hub would encourage the people of Calder to be active and connected during all seasons
- + Service providers would benefit from establishing a community hub



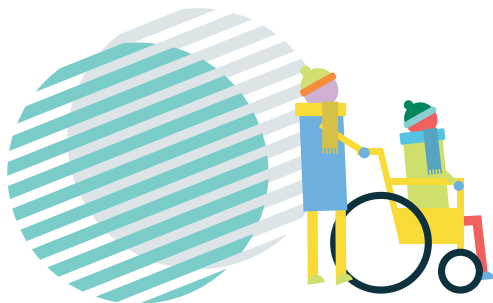
Technical Requirements

- + The design addresses the need to work around existing underground and above ground utilities



City Policies and Programs

- + The City follows universal design (i.e. Access Design Guide) to support access and use for people of all ages and abilities
- + Complete Streets Design and Construction – Roadways 2018
- + Abundant Communities Edmonton
- + Building Community Through Recreation
- + Community Led Construction Projects
- + Neighbourhood Park Development Program



Gateway Features

What we decided

- + Gateway features will be included in the final design as a community-led project
- + The community works with the Neighbourhood Resource Coordinator to pursue the development of gateway features

What we accounted for to make our decisions



Public Engagement Input

In alignment with the project Vision and Guiding Principles:

- + Creating a sense of community for the residents of Calder



What We Heard

- + Community members were supportive of gateway features being pursued in the neighbourhood
- + Calder has a rich history that could be featured through gateway features



Technical Requirements

- + The design addresses the need to work around existing underground and above ground utilities
- + Active entrances and exits from the neighbourhood



City Policies and Programs

- + Abundant Communities Edmonton
- + Building Community Through Recreation
- + Community Led Construction Projects
- + Neighbourhood Park Development Program
- + Edmonton Zoning Bylaw 12800
- + City Plan



Historic Character

The history of Calder is unique and should be highlighted. Participants in previous engagements suggested that the historical character of the neighbourhood could be emphasized in the following ways by identifying and highlighting historic spaces, recognizing the indigenous past and Calder's present character.

124 Street interpretative signage

What we decided

- + This signage will be included in the final design as a community-led project
- + The community works with the Neighbourhood Resource Coordinator to pursue the development of the signage

What we accounted for to make our decisions



Public Engagement Input

In alignment with the project Vision and Guiding Principles:

- + Creating a sense of community for the residents of Calder



What We Heard

- + Community members are interested in interpretive signage being pursued on 124 Street
- + The historic streetcar line is an interesting topic to highlight



Technical Requirements

- + The design addresses the need to work around existing underground and above ground utilities



City Policies and Programs

- + The City follows universal design (i.e. Access Design Guide) to support access and use for people of all ages and abilities
- + Complete Streets Design and Construction – Roadways 2018
- + Abundant Communities Edmonton
- + Building Community Through Recreation
- + Community Led Construction Projects
- + Neighbourhood Park Development Program
- + City Plan

Community walk/heritage interpretation

What we decided

- + To work with the community to create a walking map and interpretive signage that highlights the unique and important historic character of Calder
- + This will be included in the final design as a community-led project
- + The community works with the Neighbourhood Resource Coordinator to pursue the development of the community walk

What we accounted for to make our decisions



Public Engagement Input

In alignment with the project Vision and Guiding Principles:

- + Creating a sense of community for the residents of Calder



What We Heard

- + Community members indicated that collaboration with the community to identify locations is important.



Technical Requirements

- + Historic Designation of neighbourhood properties
- + Sidewalk widths and design considerations for safe crossing on route



City Policies and Programs

- + Abundant Communities Edmonton
- + Building Community Through Recreation
- + Community Led Construction Projects
- + Neighbourhood Park Development Program



Public art opportunities

What we decided

- + Public art opportunities could highlight the unique and important historic character of Calder
- + To create opportunities for public art to add beauty to the area and enhance the community's identity
- + These will be included in the final design as a community-led project
- + The community works with the Neighbourhood Resource Coordinator to pursue the development of public art projects

What we accounted for to make our decisions



Public Engagement Input

In alignment with the project Vision and Guiding Principles:

- + Creating a sense of community for the residents of Calder



What We Heard

- + Community members indicated that public art should be unique and highlight Calder's character
- + There is interest in public art being pursued in the community



Technical Requirements

- + The design addresses the need to work around existing underground and above ground utilities



City Policies and Programs

- + Abundant Communities Edmonton
- + Building Community Through Recreation
- + Community Led Construction Projects
- + Neighbourhood Park Development Program



Utility box public art wraps

What we decided

- + To create opportunities to wrap utility boxes with public art to add to the beauty of the area and enhance the community's identity
- + Public art opportunities could highlight the unique and important historic character of Calder.
- + These will be included in the final design as a community-led project
- + The community works with the Neighbourhood Resource Coordinator to pursue the development of these

What we accounted for to make our decisions



Public Engagement Input

In alignment with the project Vision and Guiding Principles:

- + Creating a sense of community for the residents of Calder



What We Heard

- + Community members are interested in utility box public art wraps as a way to beautify the neighbourhood
- + Residents with a passion for history have gathered the history of the neighbourhood for use in projects



Technical Requirements

- + Working with existing above ground utilities
- + Coordination with utilities for permission

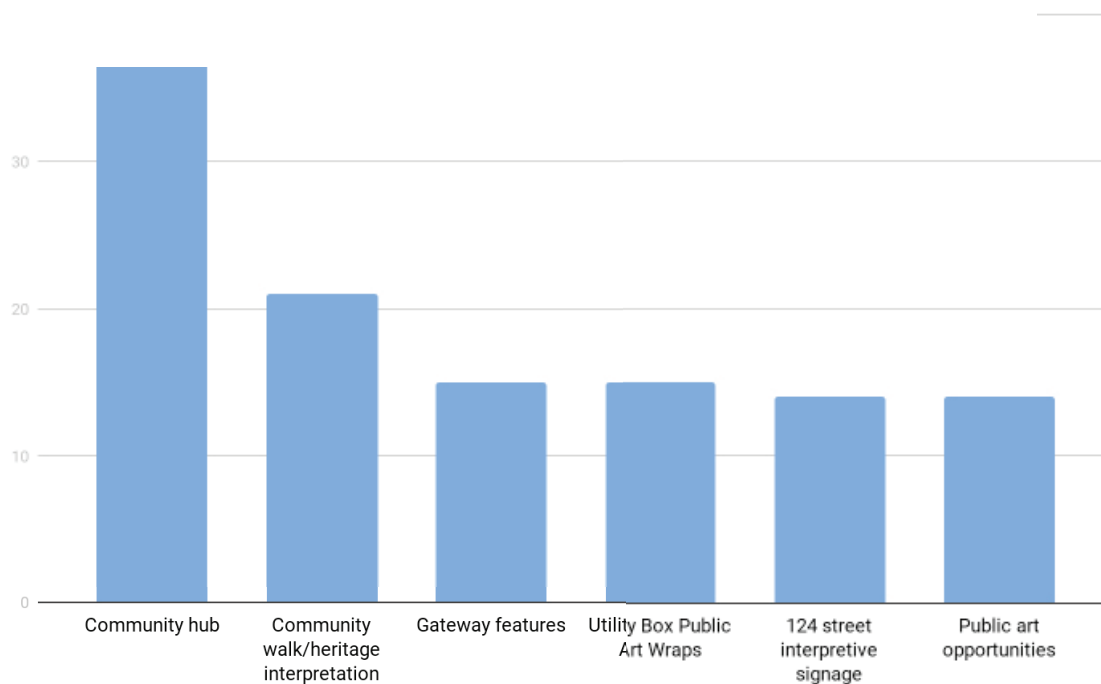


City Policies and Programs

- + Abundant Communities Edmonton
- + Building Community Through Recreation
- + Community Led Construction Projects
- + Neighbourhood Park Development Program
- + Capital City Clean Up program

We asked participants to provide feedback to indicate how interested they were with each enhancement being pursued in Calder and to provide input on which placemaking and historic character projects should be prioritized. Each participant was given 5 dots and invited to indicate which concepts they were most interested in seeing pursued in Calder.

Which concepts should be pursued in Calder



.....

For more information:

Web: edmonton.ca/BuildingCalder

Email: buildinggreatneighbourhoods@edmonton.ca

Call: 311

The background features a stylized illustration of a neighborhood. On the left, there are several houses with green roofs and yellow accents. In the center, a person is riding a bicycle. On the right, a snowman stands next to a person wearing a blue coat and a red scarf. The sky is light blue with large, soft-edged clouds. The overall color palette is dominated by various shades of green and blue.

Working together to make the most out of your neighbourhood.

This is your city and your neighbourhood. We want to understand how you experience your neighbourhood and ask for your input on what we might do to make it better.

We will engage and work with you on the renewal of roads, sidewalks, street lights, and park spaces, and promote other community opportunities to enhance how people live and interact in your neighbourhood. We commit to being open and transparent about how your input is used. Let's make the most out of your neighbourhood.

edmonton.ca/BuildingCalder

SHARE YOUR VOICE
SHAPE OUR CITY

Edmonton