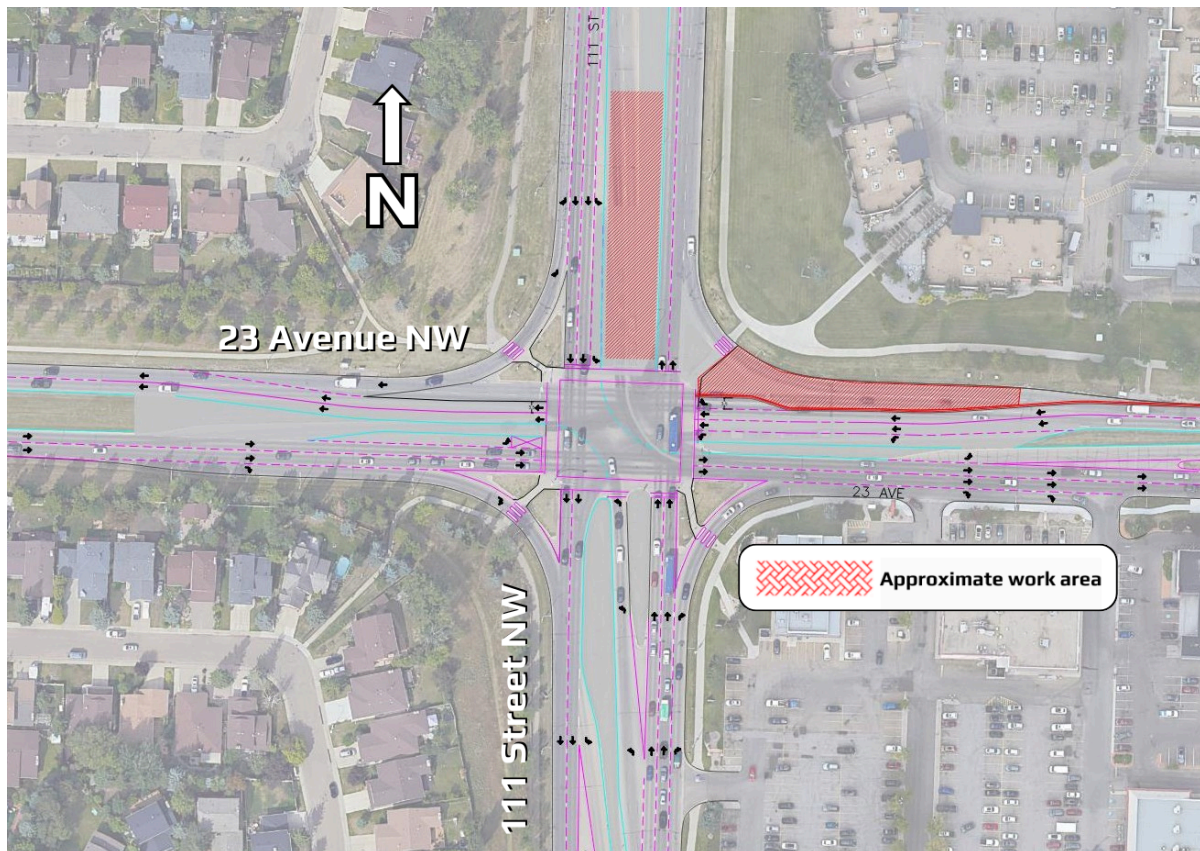


## Construction Notice – Minor Lane Shifts at 23 Avenue & 111 Street

Beginning **on/around November 8**, Ledcor, the Design-Build contractor for the project, will make minor roadway adjustments at 23 Avenue and 111 Street so crews can install temporary traffic signal poles. This traffic configuration is expected to be in place until approximately November 16. Please see below for more details.



### What to Expect

#### Traffic Lane Changes

- Southbound lanes on 111 Street will be shifted to the west. All current travel movements will be maintained.
- The northbound to westbound left turning lane will be shifted to the west.

### Pedestrian Detours and Closures

- Pedestrian access to nearby neighbourhoods will be maintained throughout construction but may change due to work zone requirements.

### Other Impacts

- Work will take place on weekdays between 7:00 a.m. and 5:00 p.m.
- Some construction may occur on Saturdays, depending on the weather.
- Heavy truck traffic will increase around the work areas.
- While efforts will be made to minimize disruptions, some noise and vibration may be unavoidable. Mitigation measures will be implemented to monitor and reduce these impacts.

## **For More Information**

**City of Edmonton** (general project inquiries)

Visit: [edmonton.ca/capitalsw](https://edmonton.ca/capitalsw)

Email: [lrtprojects@edmonton.ca](mailto:lrtprojects@edmonton.ca)

Call: LRT Projects Information Centre at 780-496-4874 (voicemail)

**Ledcor Group of Companies** (construction-specific inquiries)

Email: [capitalinesouth@ledcor.com](mailto:capitalinesouth@ledcor.com)

Call: Capital Line South public inquiry line at 780-540-7013 (voicemail)