

The graphic features a dark background with yellow arrows and lines. On the left, a yellow outline of a person's head is visible. The text 'YELLOWHEAD TRAIL' is prominently displayed in large, bold, yellow letters, with 'FREEWAY CONVERSION PROGRAM' in smaller white letters below it. The word 'Yellowhead' is written in a cursive yellow font on the right side. There are also some faint icons of a truck and a car.

YELLOWHEAD TRAIL

FREEWAY CONVERSION PROGRAM

Fort Road and 71 Street Business Loop

Fort Road Widening

July 2024

To improve business access on Fort Road west of 125 Avenue and the 71 Street business loop, existing access from Yellowhead Trail westbound off-ramp will be closed permanently. A new access point at 125 Avenue west will be opened. **This closure is expected to begin on Friday, July 26, 2024 (weather permitting).**

Please see the attached location map for your reference.

Access

The new 125 Avenue west access will ensure continued business access through 71 Street and 72 Street. Local businesses and visitors can now access the area through Fort Road (both northbound and southbound) or 125 Avenue (both westbound and eastbound). Additionally, the existing eastbound and westbound access from 82 Street will remain open to traffic.

We thank you for your patience and cooperation.

Please visit edmonton.ca/yellowhead for more information about the Yellowhead Trail Freeway Conversion Program. To keep updated on the latest information, follow @yegyellowhead on X.

For questions or concerns, please contact the following

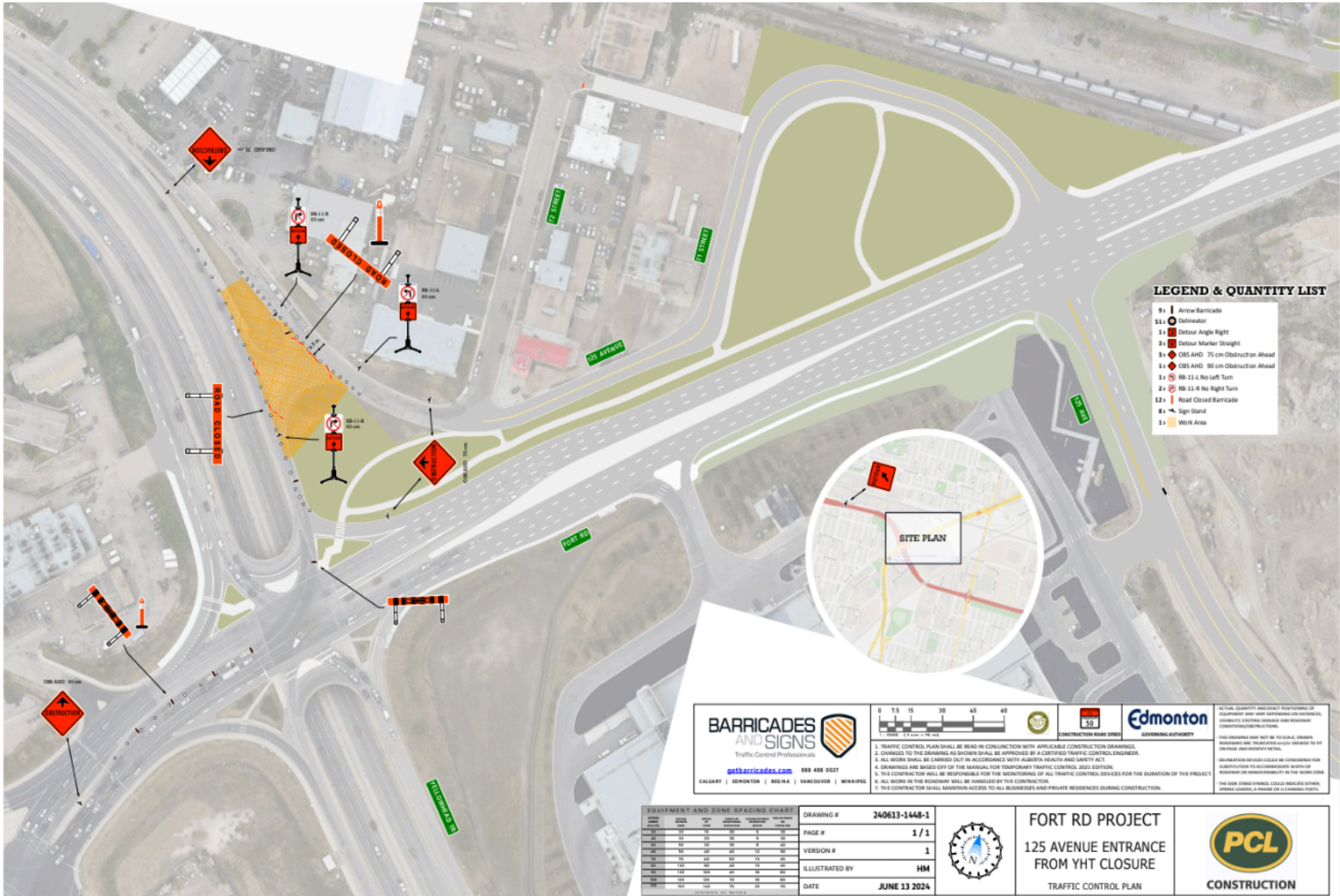
Darryl Schroter, GSC

Superintendent
PCL Construction Management Inc.
dschrot@pcl.com
587-987-6278

Donny Fung, P.Eng, PMP

Engineering Program Manager
City of Edmonton
donny.fung@edmonton.ca
780-619-9964

Proposed Existing Access Removal - Yellowhead Trail Westbound Right In Right Out



Existing Business Access into 71st street business area



Existing access from 82nd street direction to be maintained.

New 125ave West access to the business loop area

Existing Right In Right Out access from Yellowhead Trail Westbound direction to be closed permanently.