

NEIGHBOURHOOD RENEWAL

La Perle and Belmead Community Newsletter – January 2024



Neighbourhood Renewal is coming to La Perle and Belmead!

Changes are coming to La Perle and Belmead!

Through the Neighbourhood Renewal program, the City will reconstruct roads and curbs, replace street lights, repair sidewalks and, where possible, complete active transportation links. Construction is anticipated to begin in 2026 and will be confirmed as the project progresses.

Other opportunities to improve street crossings, bike connections and City-owned parks, trails and gathering spaces will also be explored.

Cost-sharing opportunities will be made available through the Local Improvement process for sidewalk reconstruction and decorative street light upgrades in the neighbourhood.

The new infrastructure will provide enhancements to La Perle and Belmead for the next 30 to 50 years.

A series of opportunities for you to provide input and feedback into the renewal of your neighbourhood are being planned. For information, and to sign up for news and updates as we move through the renewal process, visit edmonton.ca/BuildingLaPerleandBelmead.

What's inside

Neighbourhood Renewal is coming to La Perle and Belmead! 1

Message from your Project Manager 3

Public Engagement Spectrum 4

Neighbourhood Renewal Road Map 5

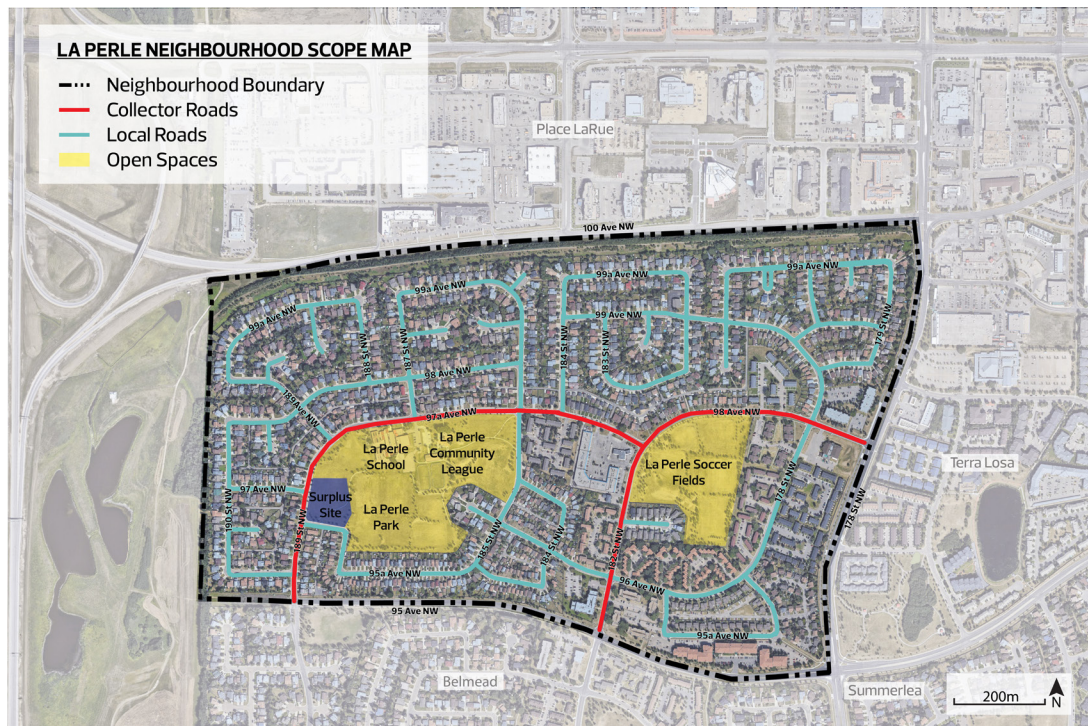
How decisions are made 6

What we've done 6

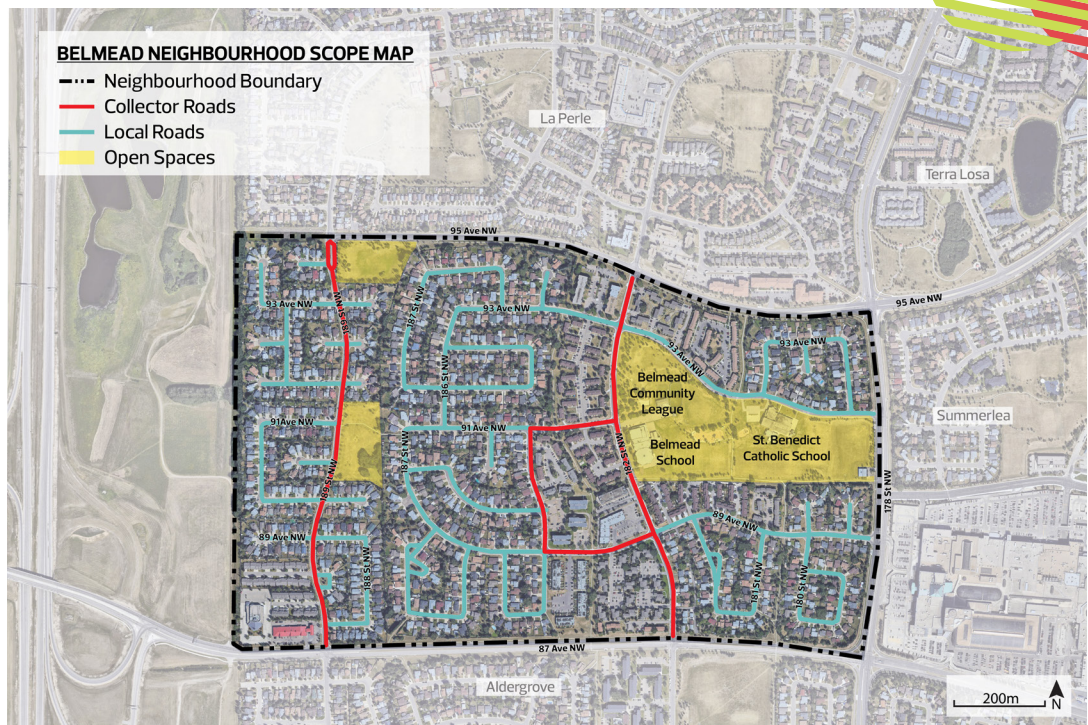
Get involved! 7



La Perle Neighbourhood Scope Map



Belmead Neighbourhood Scope Map





Message from your Project Manager

Greetings,

Our Project Team is excited to be starting the planning and design work for La Perle and Belmead Neighbourhood Renewal alongside your communities. We have been active in the neighbourhoods since the summer of 2023, collecting information about the neighbourhoods and meeting with different community members to learn more about your unique needs. Over the coming months, we would like to hear from and meet with as many of you as possible to share information about the Neighbourhood Renewal process, create the Project Vision and Design Guiding Principles, as well as gather your input on neighbourhood improvement opportunities.

Over the next couple of years, you can expect the Project Team to develop and revise the neighbourhood design using existing City of Edmonton policies and standards such as The City Plan, Complete Streets and the Access Design Guide, along with the existing utility and infrastructure opportunities. As we revise the Neighbourhood Renewal design, we will refer back to the Vision and Guiding Principles the communities create and ask for public input on specific topics.

In the meantime, you may see members of our team walking through the neighbourhoods, looking at the existing infrastructure such as the sidewalks, open spaces and intersections. We will continue to be in your communities gathering information and confirming our design throughout the project. Feel free to stop us and ask us any questions you may have.

If you have any questions, please reach out to our team by calling 311, emailing BuildingGreatNeighbourhoods@edmonton.ca or emailing me directly at chase.gingles@edmonton.ca.

We look forward to working with you.

Chase Gingles
Planning and Design Project Manager





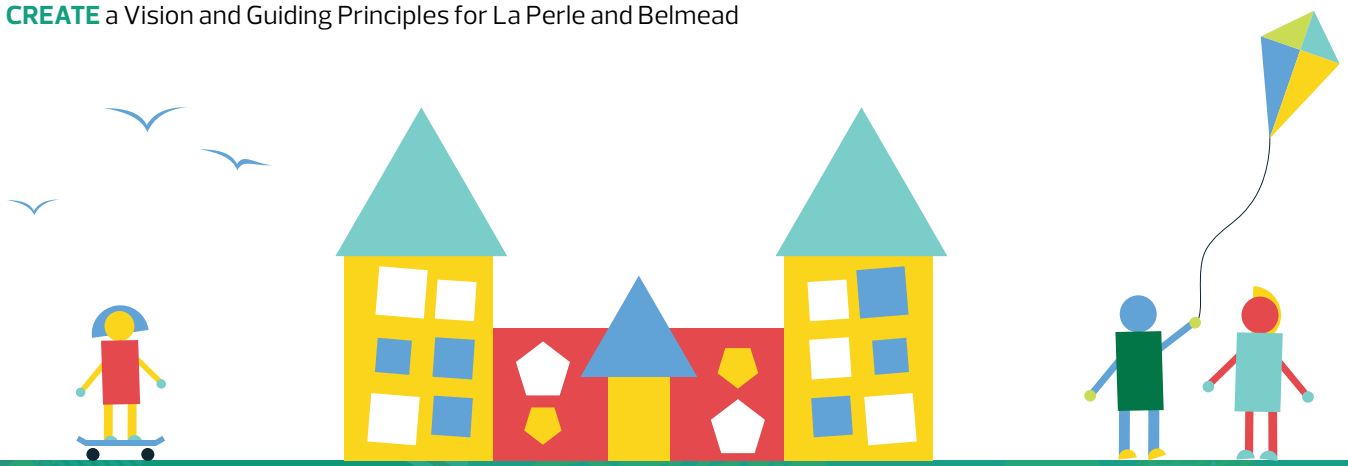
Public Engagement Spectrum

The City of Edmonton will ask for input from residents to help guide the project. The City's Public Engagement spectrum, below, shows the four distinct levels of influence the public had on decisions made by the City throughout the project.



The role of public engagement input is to help the City understand what is important to community members in La Perle and Belmead, as well as how the Neighbourhood Renewal design decisions will affect them.

- + **REFINE** the Project Team's communications and engagement approach for the project
- + **CREATE** a Vision and Guiding Principles for La Perle and Belmead





Neighbourhood Renewal Road Map

People living in and with an interest in La Perle and Belmead are invited to provide input into the City's decision making process for Neighbourhood Renewal at various stages along the road map below. We are currently in the **Building a Project Vision Together and Exploring Opportunities** stages.



LEGEND

Public Engagement and Communications Opportunities

Concept Phase

Design Phase

Build Phase

Operate Phase

La Perle and Belmead Neighbourhood Renewal Schedule

OCTOBER 2023

Starting the Conversation

JANUARY 2024

Building a Project Vision Together and Exploring Opportunities

SPRING 2024

Exploring Options and Tradeoffs

FALL 2024

Community Feedback on Draft Design

SPRING 2025

Community Feedback on Final Design

WINTER 2026

Preparing for Construction & Local Improvement Decisions

ANTICIPATED START IN 2026

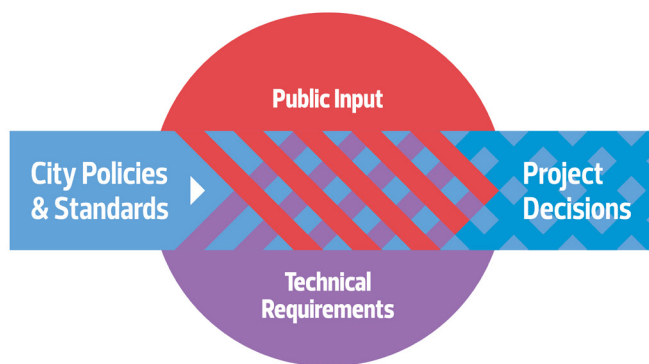
Construction on Your Streets



How decisions are made

For Neighbourhood Renewal projects, the City of Edmonton makes decisions using a combination of policy and program information, public input, technical requirements and available funding. This process helps to ensure the decisions we make are fiscally responsible, align with best practices, consider the existing public and private infrastructure, land uses and activities in the neighbourhood and result in the best outcomes for our city.

City policies and programs such as the Complete Streets Design and Construction Standards, Safe Mobility Strategy and Winter City Strategy provide the overall direction for Neighbourhood Renewal designs. As each neighbourhood is unique, the Project Team asks for input from residents who live, work and play in the neighbourhood, while considering technical aspects such as roadway widths and conflicts with utilities and trees to determine what will fit in the neighbourhood.



How is Neighbourhood Renewal paid for?

The Neighbourhood Renewal Program is paid for through a City-wide property tax reserve fund dedicated to the program. However, two specific improvements—decorative street lights and sidewalk reconstruction—are cost-shared by the City and property owners in the neighbourhood, as they are considered a Local Improvement. More information on Local Improvements will come later in the project.

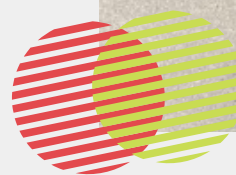
What we've done

All treats, no tricks

Did you come across any construction workers on Halloween? Our Project Team was out in the community learning about your communication and engagement preferences, handing out candy and sharing project information on October 31, 2023.

Lidar 3D imaging

You may have seen Lidar 3D imaging in your neighbourhood. In preparation for the planning and design phase of the Renewal, a Nektar 3D truck was in the neighbourhood picking up information about road widths, curb locations, boulevard tree locations and sidewalk details. You may have noticed markings on the roads at intersections—some look like a large V—which are used to support the imaging.



Get involved!

Help shape the future of the streets, sidewalks and public spaces in La Perle and Belmead! Join the Project Team at the following events to help **CREATE** a project Vision together and **REFINE** opportunities to make La Perle and Belmead a greater place to live and play.

+ Complete the online survey

- + Available from Monday, January 15 to Monday, February 5

+ Meet the Project Team

+ In-person (drop-in)

- + Thursday, January 25, 6:00 p.m. – 8:00 p.m.
- + Belmead Community League, 9109 182 Street NW
- + Saturday, January 27, 1:00 p.m. – 3:00 p.m.
- + La Perle Community League, 18611 97a Avenue NW

+ Online

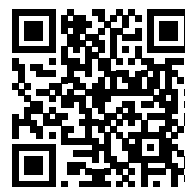
- + Tuesday, January 23, 6:00 p.m. – 7:30 p.m.
- + Register now!

No access to online resources?

No problem! If you do not have access or if you prefer to engage differently, the Project Team is available to schedule one-on-one phone calls with interested participants to share information, answer questions and gather input. Email BuildingGreatNeighbourhoods@edmonton.ca OR call **311** and ask to be connected with a Project Team member by phone.

Stay informed and engaged

For more information regarding the La Perle and Belmead Neighbourhood Renewal, upcoming public engagement activities and to subscribe for project updates, please visit edmonton.ca/BuildingLaPerleandBelmead.

The logo for the City of Edmonton, featuring the word "Edmonton" in white text on a blue rectangular background.