

# La Perle and Belmead Neighbourhood Renewal

Newsletter Issue #2 – May 2024

The logo for the City of Edmonton, featuring the word "Edmonton" in white text on a blue square background.

The City of Edmonton's Neighbourhood Renewal program will reconstruct roads and curbs, replace streetlights, repair sidewalks, and where possible, complete active transportation links in La Perle and Belmead. Other opportunities to improve City-owned parks and public spaces will also be explored.

Cost-sharing opportunities will be made available through the Local Improvement process for sidewalk reconstruction and decorative street light upgrades in the neighbourhood. The new infrastructure will provide enhancements to the neighbourhood for the next 30 to 50 years.

This newsletter is meant to inform you about Neighbourhood Renewal in La Perle and Belmead and when and how you can join the conversation. Planning is underway, and we look forward to continuing working with you to understand your neighbourhood needs and create a Neighbourhood Renewal draft design that meets them.

We will continue to invite you to participate and are committed to sharing what we heard from you and your neighbours and how we used your input.

## Upcoming underground utility location work

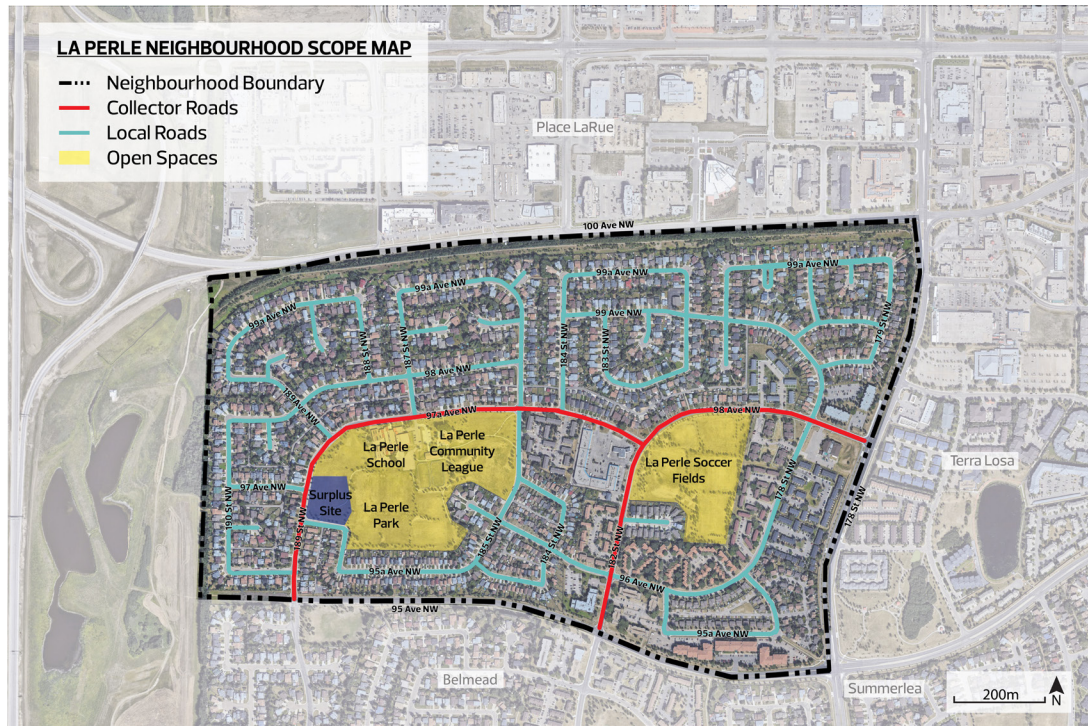
Utility location work will take place in La Perle and Belmead in the coming months to prepare for future Neighbourhood Renewal. To locate utilities, work will include surface markings (paint and flags) and surveying, followed by exposing the utility and temporarily covering the holes. Surveyors will then be able to collect location and elevation information. Finally, the holes will be filled and the surface restored. Access around the neighbourhood may be impacted for a short duration as crews work. All efforts will be made to ensure disruptions are limited.

## What's inside

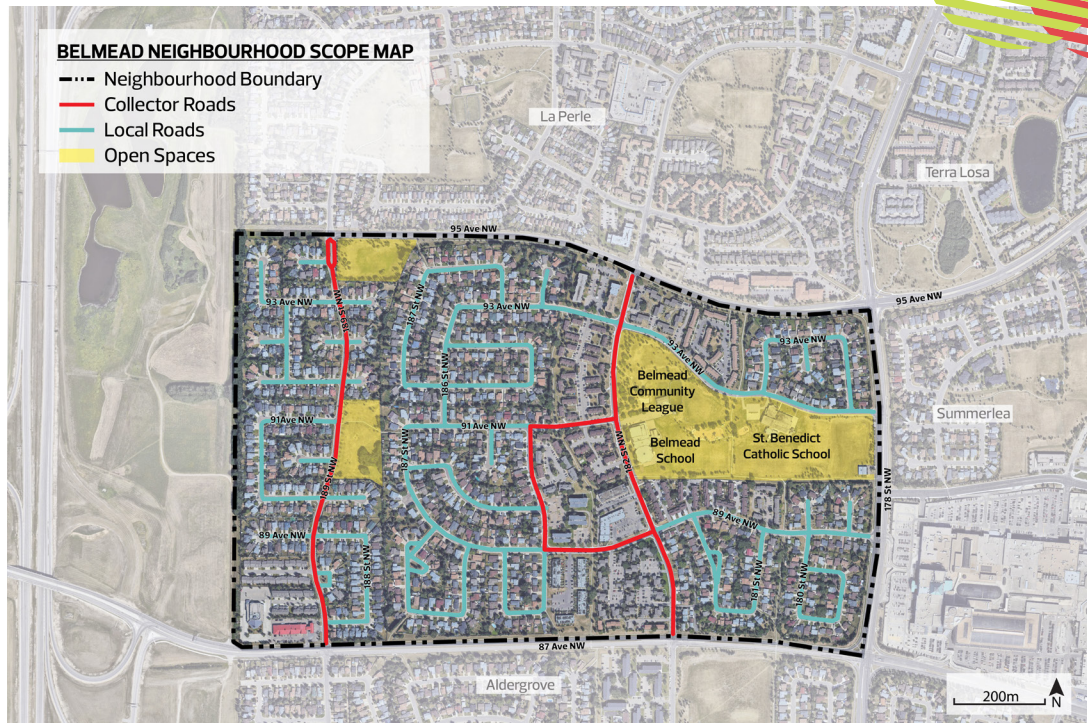
Neighbourhood scope maps .....	2
Get involved! .....	3
Neighbourhood Renewal public engagement .....	4
How decisions are made.....	5
La Perle and Belmead Vision and Guiding Principles.....	6
What we heard.....	7
What you need to know about Local Improvements.....	8
Community-led projects.....	9
Additional projects .....	11



## La Perle Neighbourhood Scope Map



## Belmead Neighbourhood Scope Map



# Get involved!

## Exploring Options and Tradeoffs April 29 to May 21, 2024

From April 29 to May 21, you are invited to **Explore Options and Tradeoffs** for La Perle and Belmead Neighbourhood Renewal. The Project Team will return to your community to confirm the Vision and Guiding Principles and explore options and tradeoffs to understand your community's preferences. During this stage, we will invite you to provide feedback on design options and share insights to help us **REFINE** the options.

### How to participate:

- + **Review the design options online**
- + **Complete the online survey**
  - + Available from Monday, April 29 to Tuesday, May 21
- + **Meet the Project Team (drop-in)**
  - + Options Tour
    - + Saturday, May 4, 1 p.m. – 3 p.m.
    - + Meet us at the Parkwest Toboggan Bowl (at the 95 Avenue and 189 Street intersection) to explore options and tradeoffs in the surrounding area
  - + In-person open houses
    - + Thursday, May 9, 6 p.m. – 8 p.m.  
La Perle Community League, 18611 97a Ave NW
    - + Tuesday, May 14, 6 p.m. – 8 p.m.  
Belmead Community League, 9109 182 St NW



To learn more and share your feedback, scan the QR code or visit [edmonton.ca/BuildingLaPerleandBelmead](https://edmonton.ca/BuildingLaPerleandBelmead).

### No access to online resources?

No problem! If you do not have access or if you prefer to engage differently, the Project Team is available to schedule one-on-one phone calls with interested participants to share information, answer questions and gather input. Email **BuildingGreatNeighbourhoods@edmonton.ca** OR call **311** and ask to be connected with a Project Team member by phone.





# Neighbourhood Renewal public engagement

In January and February, we reached out to La Perle and Belmead residents, businesses and visitors to **REFINE** our understanding of the opportunities that exist to improve your neighbourhoods.

During the **Building a Project Vision Together** and **Exploring Opportunities** stage, residents assessed La Perle and Belmead as they are today, identified opportunities for improvements and helped develop a Vision and set of Guiding Principles to help guide decision making throughout the Neighbourhood Renewal project. Thank you to everyone who shared their ideas and thoughts through the online survey, stakeholder meetings and open houses.

View the Engagement Summary on [edmonton.ca/BuildingLaPerleandBelmead](http://edmonton.ca/BuildingLaPerleandBelmead).

## Do you live in a condo in La Perle or Belmead?

We want to hear from you about your communication and engagement preferences, as well as how we can work with condo boards to plan our Neighbourhood Renewal project alongside ongoing developments. Please email [chase.gingles@edmonton.ca](mailto:chase.gingles@edmonton.ca) to share your feedback, thoughts or concerns.



## La Perle and Belmead Neighbourhood Renewal Schedule

**OCTOBER 2023**  
Starting the Conversation

**JANUARY – FEBRUARY 2024**  
Building a Project Vision Together and Exploring Opportunities

**APRIL – MAY 2024**  
Exploring Options and Tradeoffs

**FALL 2024**  
Community Feedback on Draft Design

**MAY 1, 2025**  
Community-led decorative street light design deadline

**SPRING 2025**  
Community Feedback on Final Design

**FALL 2025**  
Local Improvement assessments mailed out

**WINTER 2026**  
Preparing for Construction & Local Improvement decisions





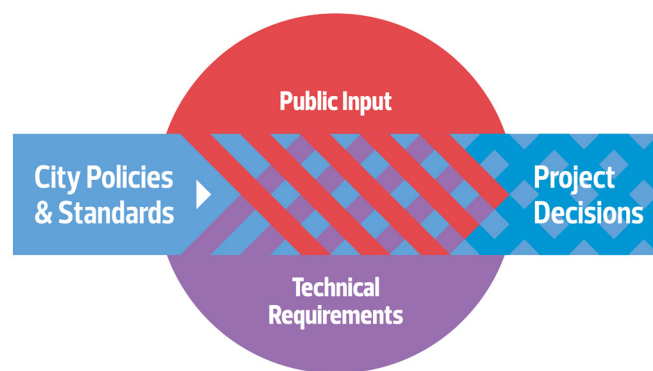
## How decisions are made

For Neighbourhood Renewal projects, the City of Edmonton makes decisions using a combination of policy and program information, public input, technical requirements and available funding. This process helps ensure the decisions we make are fiscally responsible, align with best practices, consider the existing public and private infrastructure, land uses and activities in the neighbourhood and result in the best outcomes for our city.

City policies and programs such as the Complete Streets Design and Construction Standards, Safe Mobility Strategy and Winter City Strategy provide the overall direction for Neighbourhood Renewal designs. As each neighbourhood is unique, the Project Team asks for input from residents who live, work and play in the neighbourhood, while considering technical aspects such as roadway widths and conflicts with utilities and trees to determine what will fit in the neighbourhood.

Public engagement input is used to:

- + **CREATE** Neighbourhood Renewal Vision and Guiding Principles
- + **REFINE** project understanding of neighbourhood assets, opportunities and priorities
- + **REFINE** Neighbourhood Renewal design options
- + **REFINE** the draft design
- + **ADVISE** the Project Team on the final design's alignment with the Vision and Guiding Principles
- + **DECIDE** on decorative street lights and sidewalk reconstruction Local Improvements



During the **Options and Tradeoffs** stage the public will:

- + **REFINE** the Vision and Guiding Principles
- + **REFINE** and **ADVISE** on Neighbourhood Renewal design options

# La Perle and Belmead Vision and Guiding Principles

During the **Building a Project Vision** and **Exploring Opportunities** stage earlier this year, ideas and insights were collected from participants to help us understand what you like most about your neighbourhoods, what makes them unique and how you feel about safety, neighbourliness and sense of community.

The Project Team used this input to **CREATE** a draft Vision and set of Guiding Principles for the La Perle and Belmead Neighbourhood Renewal project. This Vision will be used to guide the project and future community actions. The Guiding Principles are ideas that will inform how the Vision should be applied to the neighbourhood design and help make choices for community-led initiatives.

## La Perle and Belmead Draft Vision:

We are the well-established, safe, quiet and family-friendly communities of La Perle and Belmead. Our residents enjoy abundant green spaces within the communities which provide many opportunities to play and gather with neighbours. We are well connected to schools, parks and commercial destinations with access to key corridors beyond the communities.

## La Perle and Belmead Draft Guiding Principles:



### Welcoming

La Perle and Belmead are vibrant and welcoming communities. There are diverse parks, open spaces, recreational opportunities and local amenities which provide opportunities for neighbours to be well-connected to one another and experience all the communities have to offer.



### Safe

Residents feel comfortable moving through their communities at any time. Sidewalks, roads and crossings are enhanced to improve visibility, traffic flow and movement for people who walk, roll, bike or drive to safely travel within the communities.



### Access to parks and open spaces

La Perle and Belmead have many beautiful parks and open spaces that are well-connected throughout the communities. Connectivity provides access to these spaces and creates opportunities for families, visitors and neighbours to gather with one another.



### Inclusive

People of all ages and abilities can safely and comfortably move through the communities using various modes of transportation to enjoy the diverse gathering spaces, parks, open spaces and recreational opportunities in La Perle and Belmead.



### Local amenities

Amenities in the neighbourhoods provide opportunities for residents and visitors of all ages and abilities to enjoy. Local destinations are easy to access with many breezeways, paths, sidewalks and roads connecting different areas within the communities.

You can view and provide feedback on the draft Vision and Guiding Principles online at [edmonton.ca/BuildingLaPerleandBelmead](https://edmonton.ca/BuildingLaPerleandBelmead) from April 29 to May 21, 2024.



## What we heard

The following themes summarize what we heard from La Perle and Belmead residents during the **Building a Project Vision Together** and **Exploring Opportunities** engagement stage of the project. Input was gathered through an online survey, stakeholder meetings and open houses.

### Walking, rolling and public transit

Residents are concerned about the conditions for walking and rolling, including cracked or missing sidewalks, maintenance, narrow pathways and insufficient curb extensions. Suggestions for improvement include increased lighting to enhance safety, better curb ramps and improved infrastructure maintenance to make the neighbourhoods more accessible for all residents. There is also a desire to expand and enhance pathway connections within the neighbourhoods.

### Biking

Residents prefer biking routes separated from vehicular traffic and generally support adding bike paths. They advocate for more shared pathways to accommodate cyclists and those who walk and roll. There is also a desire for better connections to other parts of the city for cyclists. Additionally, residents would like to see improved curb ramps and well-maintained infrastructure in their neighbourhoods. However, some residents believe that additional infrastructure is not necessary for cyclists.

### Parks and open spaces

Residents are seeking improved amenities for parks and open spaces, including benches, lights, shelters and a fenced area for dogs. They also desire more recreational options such as play structures and age-friendly designs. Additionally, there is a call for more landscaping and better use of green spaces. Safety and maintenance are noted concerns, and there is an emphasis on the importance of accessible and inclusive recreational areas for public gatherings.

### Driving

Residents are concerned about poor road conditions, including potholes, drainage problems and uneven curbs. They also face increased traffic congestion due to LRT construction, which prompts drivers to cut through the neighbourhoods. Parking shortages, especially near schools, are a concern. Suggestions for improvements include more lighting and signage and better traffic signal management. There is also a desire for more crosswalks and walking and rolling crossings due to safety concerns caused by increased traffic and congestion.

For more information, read the full What We Heard Report on [edmonton.ca/BuildingLaPerleandBelmead](https://edmonton.ca/BuildingLaPerleandBelmead).





# What you need to know about Local Improvements

## What is a Local Improvement?

A Local Improvement is a construction project undertaken near or next to residents' properties that is considered more beneficial to the property owner or local area than to the City as a whole. Therefore, the property owner is partially responsible for the cost of these improvements. Local Improvements are a part of the Neighbourhood Renewal discussions with you and your neighbours. Learn more by visiting [edmonton.ca/LocalImprovements](https://edmonton.ca/LocalImprovements).

## How is Neighbourhood Renewal paid for?

Neighbourhood Renewal is paid for through a City-wide property tax reserve fund dedicated to the program. However, two specific improvements — decorative street lights and sidewalk reconstruction — are cost-shared by the City and property owners in the neighbourhood, as they are considered Local Improvements. Property owners have two options for Local Improvement payments: either a one-time lump-sum charge or an annual payment. The annual payment is amortized over a local serviceable lifetime, which varies based on the type of Local Improvement (15 years for decorative street lights and 20 years for sidewalk reconstruction), with the payment and its interest added to your property taxes.

## Sidewalk reconstruction

A sidewalk reconstruction Local Improvement is initiated by the City as part of Neighbourhood Renewal. As a property owner, you will be able to decide whether you would like to proceed with sidewalk reconstruction or not. More information about the Local Improvement assessment and next steps will be mailed out to property owners in the fall of 2025.

## Decorative street light options

New standard galvanized street lights are included in the Neighbourhood Renewal process at no additional cost to the property owner. However, some communities choose to pay for a decorative street light upgrade, where the cost of the upgrade is charged to the property owners as a Local Improvement. The decision to proceed with decorative street lighting is community-initiated. More information about decorative street lights can be found at [edmonton.ca/DecorativeStreetLights](https://edmonton.ca/DecorativeStreetLights). If you are interested in leading this initiative, please reach out to the Project Manager directly at [chase.gingles@edmonton.ca](mailto:chase.gingles@edmonton.ca). The decorative street light option must be submitted by the community to the Project Manager by May 1, 2025.







# Community-led projects

## What is a community-led project?

A community-led project is carried out by a group of people from the neighbourhood. This group creates a vision for the project, schedule and budget. Projects can occur on or in public or private land and/or facilities and can lead to programming or infrastructure.

The City of Edmonton can support these projects by providing staff and resources. Neighbourhood Resource Coordinators (NRCs) support communities on many projects such as park enhancements, murals and programming.

## These projects:

- + Are led by and operated by the community group when completed
- + Are located within City spaces and defined by a license, lease or agreement
- + Require City approval and follow City process when alterations are made to a facility or space, as per the terms of their license, lease or agreement with the City

## How are community-led projects paid for?

Community-led projects are fundraised by the community. The City of Edmonton has several grants to help contribute to community projects. Other partnerships with businesses or associations can also fund community projects.

## Here are some examples of community-led projects:

- + Community garden
- + Ice rink
- + Gazebo
- + Community building
- + Spray park
- + ... and beyond!

## How do we get started?

Residents interested in pursuing the development of any of the options listed above, or others, should connect with their Neighbourhood Resource Coordinator. To get started or to learn more about community-led opportunities, call 311 to find your NRC. Together, we can set up a meeting with interested La Perle and Belmead residents to discuss potential ideas.



## Updates from your community leagues

### La Perle Community League

We are excited to start planning events and activities for the upcoming year following our AGM on April 16. Thank you to all the residents who showed up, our special guests for sharing their updates and our newest board members for taking on a new opportunity in 2024!

Watch for our next community engagement opportunity following the announcement of the surplus school development in La Perle. If you're interested in learning more and/or participating in this event, please email [board@lpcl.ca](mailto:board@lpcl.ca).

Planning is already underway for Stars & Cars 2024 on July 20. Enjoy a day full of family-friendly fun; Classic Car Show, First Responders, live entertainment, vendor marketplace, bouncy castles, face painting and more! Keep an eye out for updates about La Perle's biggest event of the year.

If you have ideas for events or activities in La Perle, let us know by emailing [board@lpcl.ca](mailto:board@lpcl.ca).

Karin Ferrari  
Communications Director  
La Perle Community League

### Interested in learning more?

**Email:** [board@lpcl.ca](mailto:board@lpcl.ca)

**Web page:** [www.lpcl.ca](http://www.lpcl.ca)

### Belmead Community League

Are you interested in getting involved in the Belmead Community League? Several board positions need to be filled this year. Without a full board, the community league is at risk of not having hall rentals, community events, a community soccer program and a skating rink

### Upcoming events

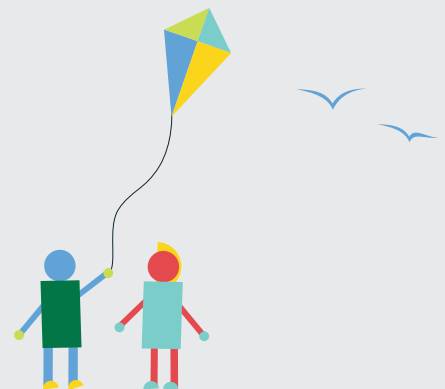
Plant and Garage Sale (Saturday, May 11 from 9 a.m. to 4 p.m.)

- + Vendors are needed for the annual combined garage sale and plant sale
- + Vendor tables are available for rent (\$15 for members; \$20 for non-members) and are limited to one table per household. Applications are required via email
- + Looking for plant sale vendors that sell annuals, vegetables and perennials
- + Furniture is not permitted to be sold at the garage sale. If you would like your address added to the community league map, email the community league

### Interested in learning more?

**Email:** [belmead@telusplanet.net](mailto:belmead@telusplanet.net)

**Web page:** [www.sites.google.com/site/belmeadcommunityleague](http://www.sites.google.com/site/belmeadcommunityleague)



# Additional projects

The La Perle and Belmead Neighbourhood Renewal Project Team is working closely with other projects in your communities including:

## Valley Line West LRT

In 2024, Marigold Infrastructure Partners entered its third year of major construction on Edmonton's Valley Line West LRT. This project, which has been in the works for over a decade, represents the second phase of the 27-kilometre Valley Line, designed as a low-floor, urban-style LRT connecting Mill Woods to Lewis Farms.

Marigold has indicated there will be ongoing construction along 87 Avenue for Valley Line West construction and intermittent closures at various parts along the route as construction continues. Stay up-to-date on the latest construction notices by having them sent to your inbox (you can sign up for updates on the entire alignment, or just your specific area) by visiting [marigoldinfra.ca/email-sign-up](https://marigoldinfra.ca/email-sign-up).

## Questions?

- + For questions about Marigold Infrastructure Partners construction, please contact [public@Marigoldinfra.ca](mailto:public@Marigoldinfra.ca) or call 780-412-2183
- + For questions about the Valley Line West project, please contact [LRTprojects@edmonton.ca](mailto:LRTprojects@edmonton.ca) or call 780-496-4874
- + Representatives from Valley Line West will also be at the Belmead Community League Annual General Meeting on April 29, 2024, from 6:30 p.m. to 7:30 p.m., to answer questions from the community

## Surplus school site

A rezoning application has been submitted for the City-owned surplus school site located at 9611-189 Street NW (see map on Page 2). The Edmonton Public School Board gave this site to the City in 2009 after it was no longer needed for a school. In 2015, City Council designated the site for mixed-market affordable housing. With growing demand for housing in Edmonton, the City is now ready to fulfill that vision.

Over the next year, the City will be preparing the La Perle site for multi-unit residential development by conducting survey work, submitting a rezoning application and seeking Council's approval to sell the land to an affordable housing provider. Public engagement for the rezoning application will take place this spring and Council will make a decision at a public hearing this fall.

Information will be shared with the community league and residents throughout the development process. Visit [edmonton.ca/HousingDevelopments](https://edmonton.ca/HousingDevelopments) to learn more and sign up for updates.

## Stay informed and engaged

For more information regarding the La Perle and Belmead Neighbourhood Renewal, upcoming public engagement activities and to subscribe for project updates, scan the QR code or visit [edmonton.ca/BuildingLaPerleandBelmead](https://edmonton.ca/BuildingLaPerleandBelmead).





## Working together to make the most out of your neighbourhood.

This is your city and your neighbourhood. We want to understand how you experience your neighbourhood and ask for your input on what we might do to make it better. We will engage and work with you on the renewal of roads, sidewalks, streetlights and park spaces. We will also promote other community opportunities to enhance how people live and interact in your neighbourhood. We commit to being open and transparent about how your input is used. Let's make the most out of your neighbourhood.

**SHARE** YOUR VOICE  
**SHAPE** OUR CITY

**Edmonton**