

**COMMUNITY WALKING MAP**

# Kensington, Calder, Lauderdale & Rosslyn




Calder School

## Walk Edmonton

Walk Edmonton is an initiative bringing Edmontonians together to build a more walkable community by providing grass roots resources and building civic support. Check out our website for links to other walking resources, maps, walking groups and places to walk in Edmonton.

[edmonton.ca/walkedmonton](http://edmonton.ca/walkedmonton)  
780-944-5339

## Other Walking Resources

**Alberta Centre for Active Living**  
[centre4activeliving.ca](http://centre4activeliving.ca)  
780-427-6949

**Canada Walks**  
[canadawalks.ca](http://canadawalks.ca)

**UWALK**  
[UWALK.ca](http://UWALK.ca)

## The Benefits of Walking

### Walking... a healthy journey!

Ranked the number one activity of choice among Canadians, walking is a prescription for improved health and wellness. Walk briskly for 30 minutes a day, 5 days a week, and minimize your risk for cardiovascular disease, stroke, Type 2 diabetes and some types of cancer. Additional benefits include weight management, blood pressure control and boosting good cholesterol (HDLs).

Other benefits of walking:

- Releases the body's tension and stress.
- Refreshes the mind and body, especially when walking outdoors.
- Allows you to connect with your community.
- Offers an excellent way to socialize with family and/or friends.
- Increases "eyes on the street", enhancing community safety.

### Walking with your Dog

Edmonton has over 40 locations where you can enjoy your walk while your dog is off-leash. Please remember that all sites where dogs are permitted to be off-leash are multi-use areas used by all. Your dog must be leashed when not in a designated off-leash area. The dog icons show on this map are placed in the approximate location of each off-leash area, but do not show the precise boundaries. For more information, including details on off-leash boundaries, check the Parks for Paws Brochure or go to [edmonton.ca](http://edmonton.ca) (keyword off-leash)



**There are 1,440 minutes in a day, schedule 30 of them for walking!**

## Local Contacts

**Calder Community League**  
12721 – 120 Street  
Phone: 780-455-6666

**Kensington Community League**  
12130 – 134A Avenue  
Phone: 780-454-6885  
[Kensingtonhall@shaw.ca](mailto:Kensingtonhall@shaw.ca)  
[KensingtonCommunityLeague.com](http://KensingtonCommunityLeague.com)

**Lauderdale Community League**  
12937 – 107 Street  
Phone: 780-475-8644  
[feedback@lauderdale.ca](mailto:feedback@lauderdale.ca)  
[lauderdale.ca](http://lauderdale.ca)

**Rosslyn Community League**  
11015 – 134 Avenue  
Phone: 780-475-4141  
[info@rosslyncommunity.org](mailto:info@rosslyncommunity.org)  
[rosslyncommunity.org](http://rosslyncommunity.org)

**Northwest Edmonton Seniors Society**  
12963 – 120 Street  
780-451-1925  
[execald@telus.net](mailto:execald@telus.net)  
[calderseniors.org](http://calderseniors.org)

**Calder Branch — Edmonton Public Library**  
12522 – 132 Avenue  
780-496-7090  
[EPL.ca](http://EPL.ca)

**Grand Trunk Fitness & Centre**  
13025 – 112 Street  
311  
[311@edmonton.ca](mailto:311@edmonton.ca)

**Edmonton Police Service Calder Community Station**  
12540 – 132 Avenue  
780-496-8535

**Weather**  
780-468-4940

**City Information**  
Call 311

## Emergency Contacts

**Police/Ambulance/Fire**  
911

**Police Complaint Line**  
780-423-4567

## About the Community Walking Maps

This Community Walking Map is part of a series of walking guides. Each map is created as a joint project of Walk Edmonton and local Community groups to promote walkable communities. Contact us to find out if your community has an edition of this map series or to find out more about creating a map.

[Walkedmonton@edmonton.ca](mailto:Walkedmonton@edmonton.ca)  
780-944-5339

Funding for this project provided by Great Neighbourhoods



Printed 2014

## Shape (Safe Healthy Active People Everywhere)

[shapeab.com](http://shapeab.com)

Get involved with Walk to School Week and Walking School Bus Programs

[edmonton@shapeab.com](mailto:edmonton@shapeab.com)  
780-406-8530

Front Yards in Bloom, 2013 Award of Merit Winner



Funding for this project provided by Great Neighbourhoods

Kensington, Calder, Lauderdale, Rosslyn

Rosslyn was annexed by Edmonton before the First World War but was not until the late 1950s that Rosslyn was subdivided with the area filled up by the late 1960s. Rosslyn is mostly residential with commercial development along 134 Avenue and in the Northeast Corner the Rosslyn Shopping Centre that opened in July of 1962.

## Rosslyn

For many years Kensington was home to the "Kensington Queen"; from the Elementary School and at the intersection of 132 Avenue and 127 Street.

The original subdivision was abandoned before any development occurred and was not replotted until the Noel Dant plan for post-war residential development. The earlier grid pattern was replaced in the 1950s by a model in which services were centrally located with enclosed road access. This is evidenced today by the shopping centres across Edmonton in 1913.

## Kensington

In 1955 Lauderdale was ready for development. Residential streets were laid out on a modified crescent system with parks and school grounds included in the layout.

Grand Trunk Park developed in the Northwest corner with the southern portion locally called Onion Park due to a farmer growing onions. It was also considered a crash zone for the City Airport. Planner Noel Dant announced in February, 1951 that progress was being made on designing and completing new post-war residential neighbourhoods. Plans were designed to route traffic around the new neighbourhoods and not through them.

Lauderdale dates back to James Lauder who farmed on land he owned near by the area.

## Lauderdale

Calder amalgamated with Edmonton in 1917. The attractive clinkerbrick craftsman cottage built by Frederick S. Jones in 1926 is a reminder of the builders who lived in Calder. Jones was a brick layer and stonemason who lived at 13067 – 115 Street; a Municipal Historic Resource.

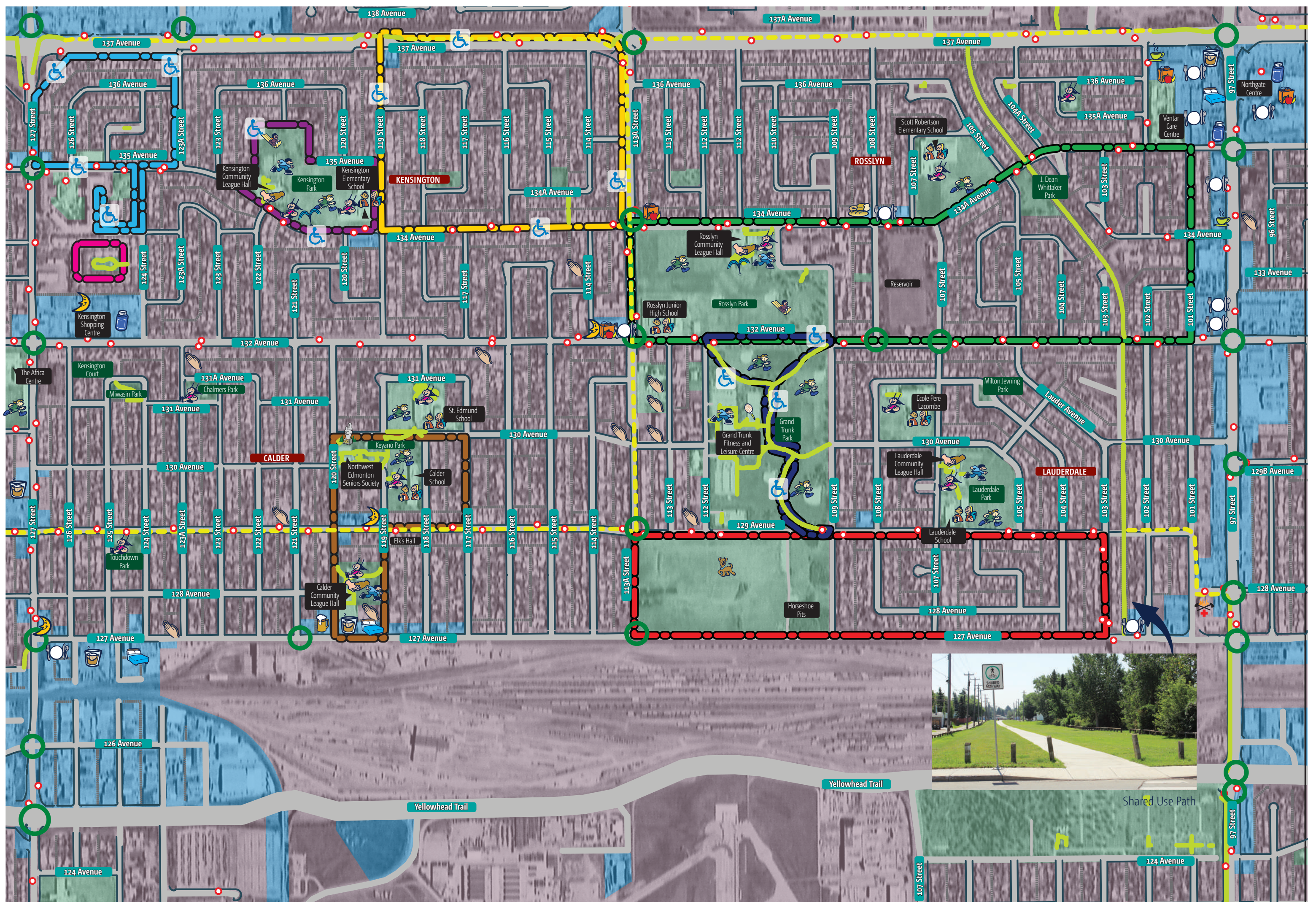
Calder's history is rooted in railway history and has remained a railway community with CN's Walker Yard an adjacent neighbour to the south. In 1909 the Grand Trunk Pacific Railway established a divisional point at Calder and began construction of its round house and repair shops. A.W. Young then built a small general store soon followed by boarding houses and restaurants. Construction workers first lived in tents. The first church also held services in tents. A school district was organized in September 1910 for local children. By October 1910 there were 45 houses, three stores, three churches, a school and a "modern and complete telephone service".

## Calder

Rosslyn Park







## KENSINGTON, CALDER, LAUDERDALE & ROSSLYN

### Legend

- |                   |                                |               |
|-------------------|--------------------------------|---------------|
| Accessible        | Liquor Store                   | Restaurant    |
| Bakery            | Off-Lease Area                 | School        |
| Coffee Shop       | Pharmacy                       | Skating Rink  |
| Community Hall    | Place of Worship               | Sports Fields |
| Convenience Store | Playground                     | Spray Deck    |
| Fire/Ambulance    | Pub                            | Tennis Court  |
| Grocery Store     | Public Art/<br>Monument/Statue | Toboggan Hill |
| Hotel             |                                |               |

### Sample walking routes

- 0.2 km Meadow's Loop
- 1.2 km Kensington School
- 1.9 km Grand Trunk Walk
- 2.0 km Shepherd's Walk
- 2.0 km Calder Old Towne Walk
- 2.5 km Garden Walk
- 3.1 km Ardith's Walk
- 3.8 km Olive's Walk



- Commercial
- Parkland
- Residential Area
- Crosswalk with Signal
- Bus Stop
- On Street Bike Route
- Paved Shared Use Pathway
- Roadway
- Alleys
- Sidewalk

### Scale

