

BOYLE STREET AND MCCAULEY NEIGHBOURHOOD RENEWAL

Parks and Open Spaces



What We Heard

We heard that Giovanni Caboto Park is well used and loved by residents and visitors alike.

We also heard that there is a lack of pedestrian connections through the park.

Pedestrian: References to Pedestrians within this document include the following uses:

- + walking
- + running
- + standing
- + manual / motorized wheelchairs or scooters
- + canes or walkers
- + pushing strollers or carts
- + pushing bicycles
- + various other low-speed forms of human locomotion

Please review the proposed improvements for some of the parks and open spaces in Boyle Street and McCauley and tell us what we should consider in our plans.

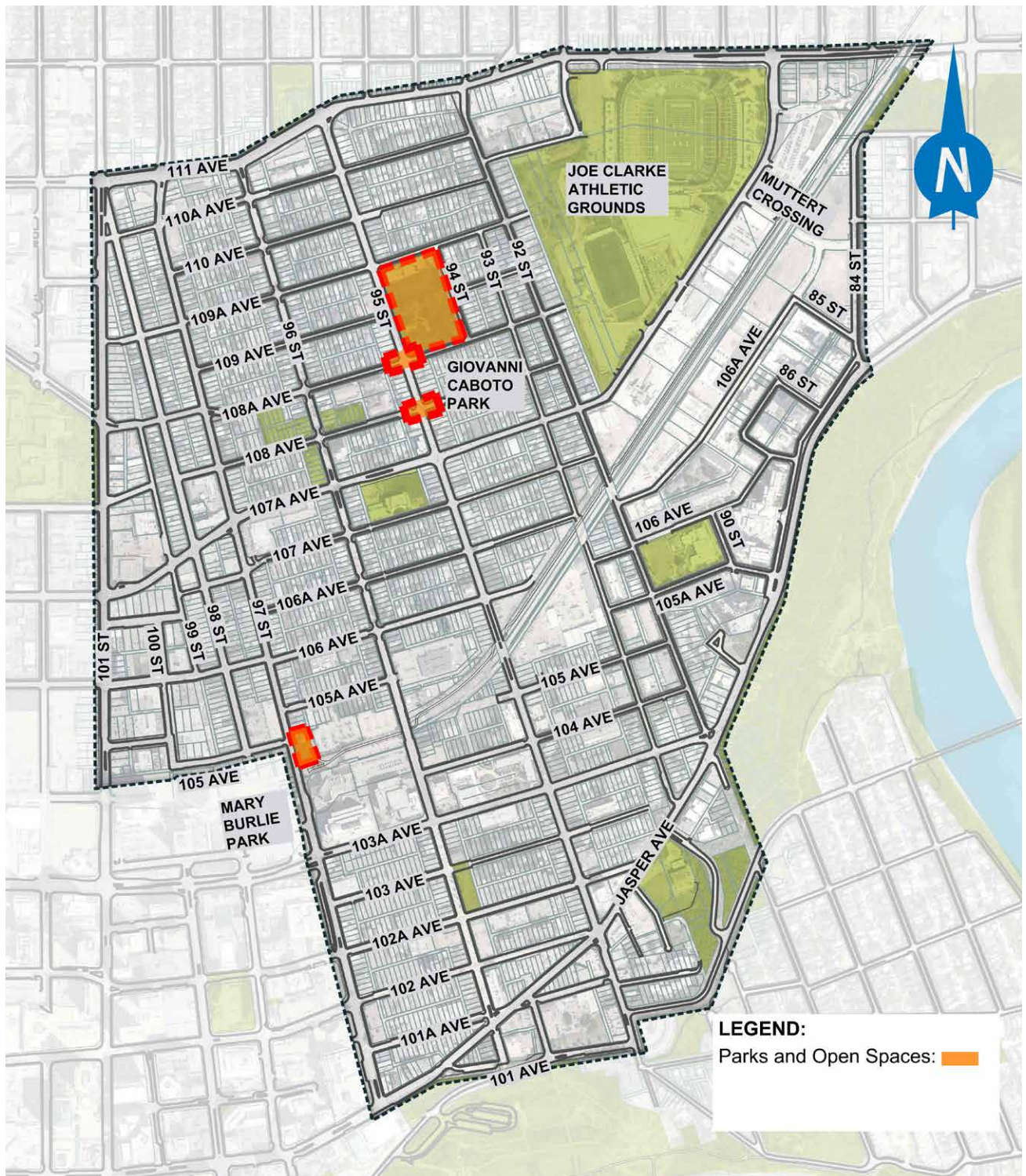
OPTIONS AND TRADEOFFS

TOPIC	PROPOSED CHANGE / DESIGN
Giovanni Caboto Park	<ul style="list-style-type: none"> + Improve path connections through the park + Entry plaza on south-east corner* + Seating area on west side*
Mary Burlie Park	<ul style="list-style-type: none"> + Improved sight lines + A north-south shared pathway from 97 Street to the alley on the east + Increased green space + New trees along the path and in the new green space + Centralized paved gathering spaces* + New seating* + Improved entry features*
108 Avenue – east & west of 95 Street (Public Spaces)	<ul style="list-style-type: none"> + Wider sidewalks + Unique pavement treatment on the street + Seating + Trees / landscaping
108A Avenue – east & west of 95 Street (Public Spaces)	<ul style="list-style-type: none"> + Wider sidewalks + Unique pavement treatment on the street + Seating + An improved pedestrian crossing (108A Avenue at Giovanni Caboto park) + Trees / landscaping

*Tentative as funding is not yet available for these improvements



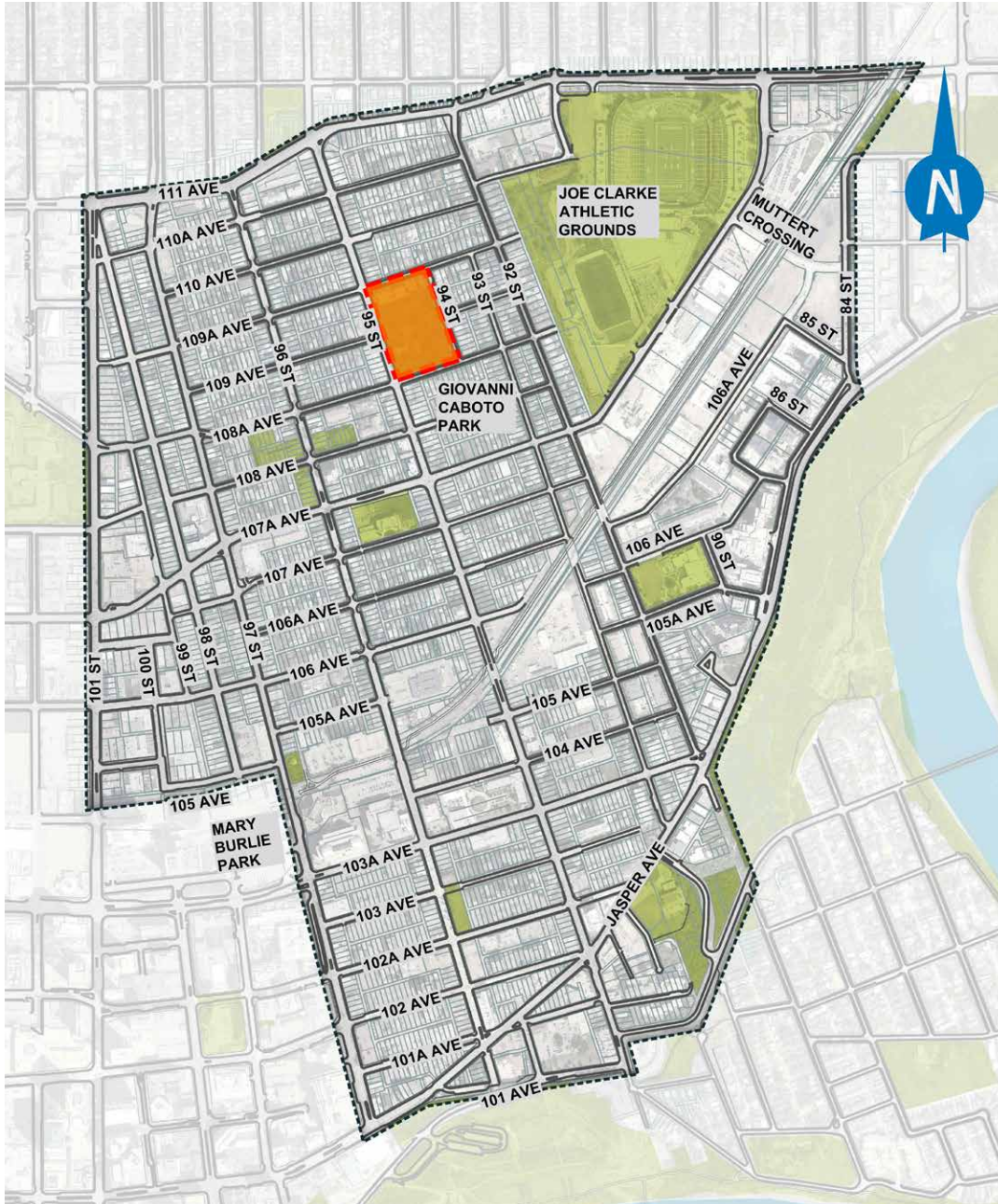
Parks and Open Spaces Proposed Changes



Giovanni Caboto Park

We heard that Giovanni Caboto Park is well used and loved by residents and visitors alike. We also heard that there is a lack of walking connections through the park.

AREA MAP



To improve path connections through Giovanni Caboto Park, the neighbourhood renewal design is considering:

- + An east-west connection from 94 Street to 95 Street near 109 Avenue
- + A north-south connection on the east side of the park between 108A Avenue to 109A Avenue (dependent on tree impacts)
- + A north-south path to existing central fountain completing connection to the southwest corner

Other improvements being considered (but not yet funded by Neighbourhood Renewal):

- + New entry plaza on south-east corner of park
- + Additional seating area on the west side near new east-west connection by 109 Avenue

GIOVANNI CABOTO PARK PROPOSED DESIGN



ENTRY PLAZA EXAMPLE



ADDITIONAL SEATING EXAMPLE



PATHWAY CONNECTION EXAMPLE



Note: Building improvements, washrooms, tree lights, water fountains are not in scope of work for this project.



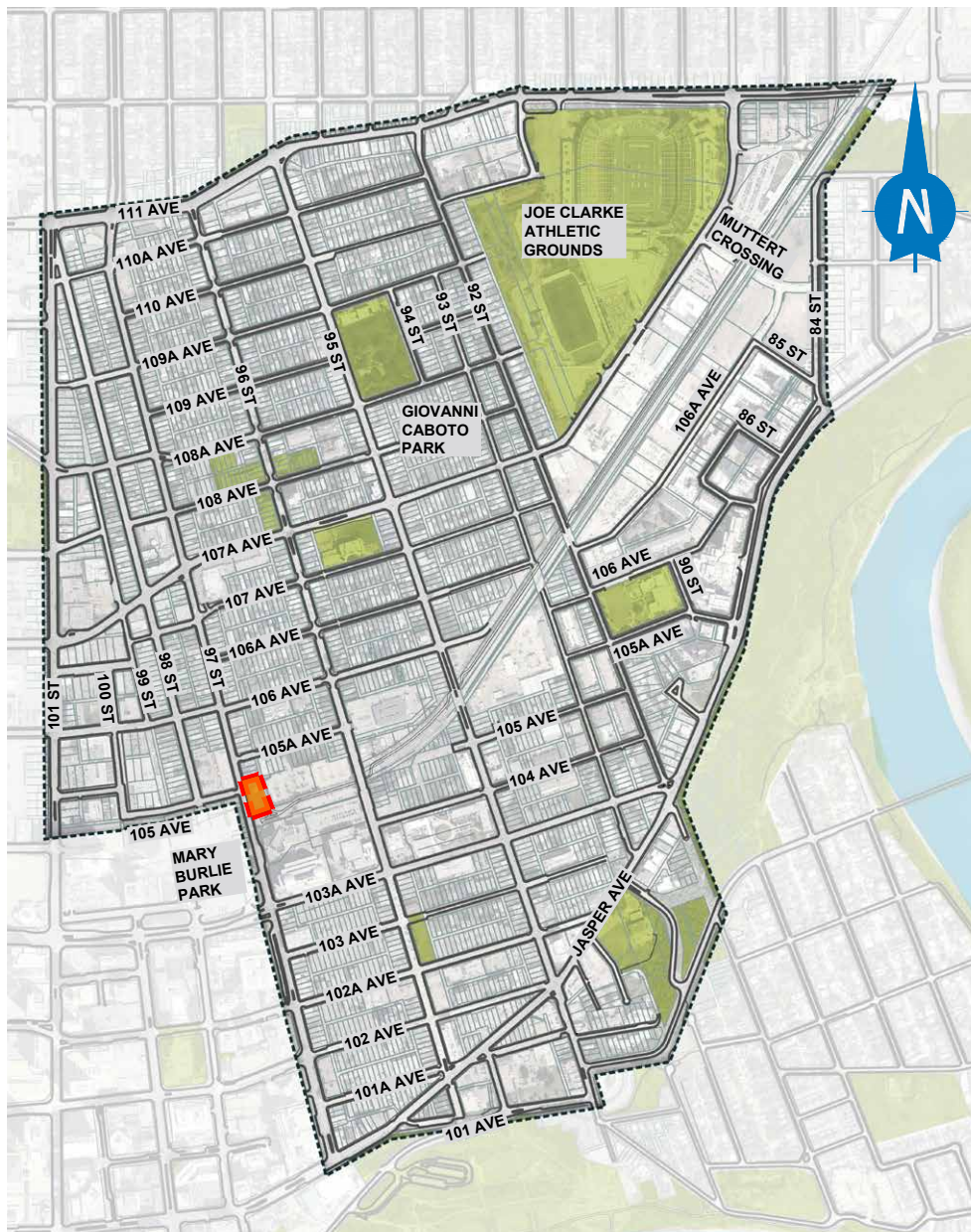
Input Opportunity:

What should we consider when planning these new pathway connections for Giovanni Caboto Park?

Mary Burlie Park

We heard Mary Burlie Park is an important green space in Boyle Street, especially for Chinatown residents and visitors. We heard that there are limited connections to and through the park and that it can feel enclosed and unsafe.

AREA MAP



To improve usability and safety in and around Mary Burlie Park the neighbourhood renewal design is considering:

- + Improved sight lines into park by removing landscaping and two trees on the west side
- + A north-south shared pathway from 97 Street to the alley on the east
- + Increased green space by integrating the alley and encompassing the shared pathway along the rail corridor into the park design
- + New trees along the path and in the new park area

Other improvements being considered (but not yet funded by Neighbourhood Renewal budgets):

- + Centralized paved gathering spaces
- + New seating
- + Improved entry features

Mary Burlie 'A Vision of Hope' sculpture and commemorative trees will remain untouched

PAVED GATHERING SPACE EXAMPLE



MARY BURLIE PARK PROPOSED DESIGN



- Improved connections to and from alley
- Selective removal of trees and vegetation to improve park sight lines
- Improve park for gathering and additional functions. Retain 'Vision of Hope' sculpture
- Increased integration of alley and rail corridor to complement park design
- Proposed Trees



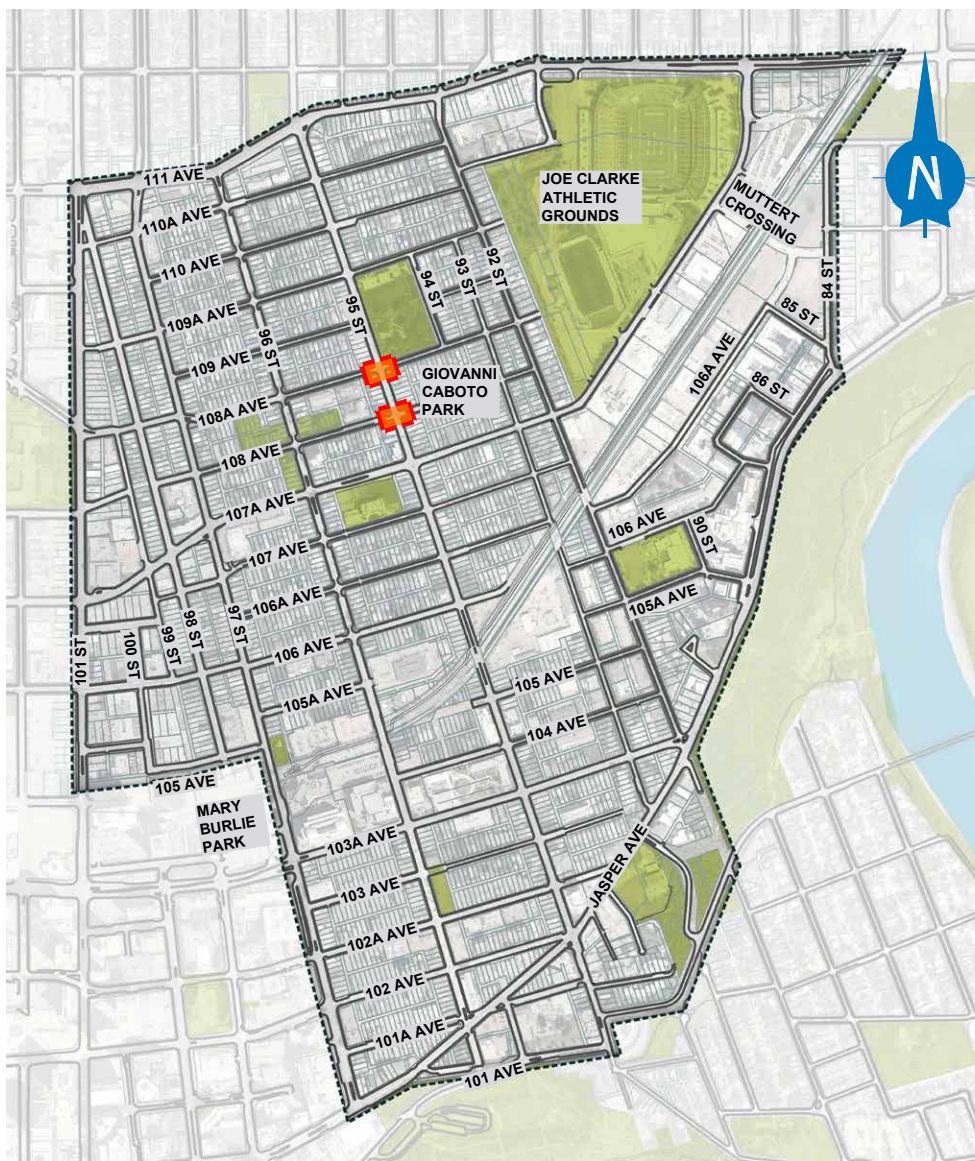
Input Opportunity:

What should we consider when planning the new design for Mary Burlie Park?

Public Spaces – 108 and 108A Avenue (alley to alley east/west of 95 Street)

These spaces are open and present opportunities to be improved for more friendly on-street gathering areas that integrate with Giovanni Caboto Park, the south side piazza and other Little Italy area businesses.

AREA MAP



108 Avenue

To improve these public spaces, the neighbourhood renewal design is considering:

- + New trees
- + Wider sidewalks
- + Unique pavement treatment on street
- + Seating

Tradeoff to consider

- + Some on-street public parking removal may be required

108A Avenue

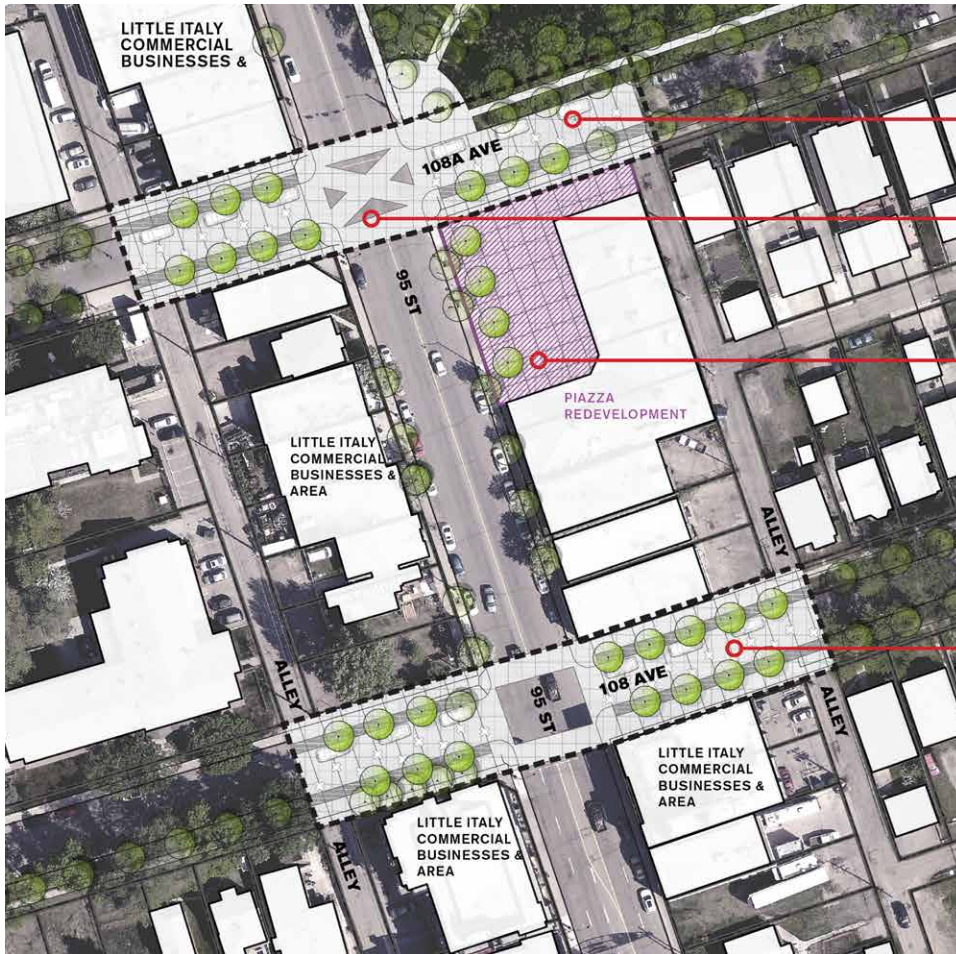
To improve these public spaces and increase usage for gatherings, the neighbourhood renewal design is considering:

- + Wider sidewalks
- + Unique pavement treatment on the street
- + Seating
- + An improved pedestrian crossing (108A Avenue at Giovanni Caboto park)
- + Trees / landscaping

Tradeoff to consider

- + Some on-street public parking removal may be required

108 AND 108A AVENUE PROPOSED DESIGN



Increase multi-function of roadway to support local retail and festivals and events

enhanced pedestrian crossing

Compliment Piazza redevelopment with supportive streetscape

Increase multi-function of roadway to support local retail and festivals and events

PAVEMENT TREATMENT EXAMPLE



PATIO SEATING EXAMPLE



STREET MARKET EXAMPLE



Funding for these improvements will be provided by the Corner Stores Grant Program.



Input Opportunity:

Let us know what we should consider when planning for these new multi-use public spaces?