

# Building Great Neighbourhoods

Starting in spring 2020, Grandview Heights will see the replacement of its aging collector and local roadway surfaces, street lights, and sidewalks as part of the City of Edmonton's Neighbourhood Renewal program for mature neighbourhoods. Neighbourhood Renewal also looks at improvements for City-owned areas within the community, including green spaces and parks. Throughout this project, we have identified opportunities to make desired upgrades and enhancements in coordination with the Neighbourhood Renewal program.

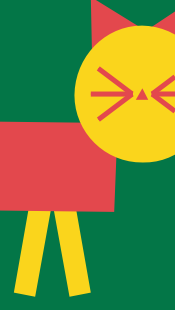
## Thank you!

This is your city and your neighbourhood. We want to understand how you experience your neighbourhood and ask for your input on what we might do to make it better. Through past events, we have engaged and worked with you on the renewal of roads, sidewalks, streetlights, and park spaces, as well as other community opportunities to enhance how people live and interact in your neighbourhood. We commit to being open and transparent about how your input was used, and will continue to share information with you throughout construction.



**SHARE** YOUR VOICE  
**SHAPE** OUR CITY

Edmonton



# Pre-Construction Event

## Welcome to the Pre-Construction event

As a follow-up to the Refined Designs event held in November 2019, we would like to share the final designs for Grandview Heights.

The final designs include:

- + Improved residential streets with measures to discourage speeding and improve sight lines
- + Enhancements to neighbourhood parks and open spaces
- + Improved walking and biking connections

Information on the construction of neighbourhood renewal and how to prepare your property will be shared, as well as an update on sidewalk reconstruction and decorative street lights. The final design for the Grandview Heights Stairs is available for viewing as well.

## Previous engagement

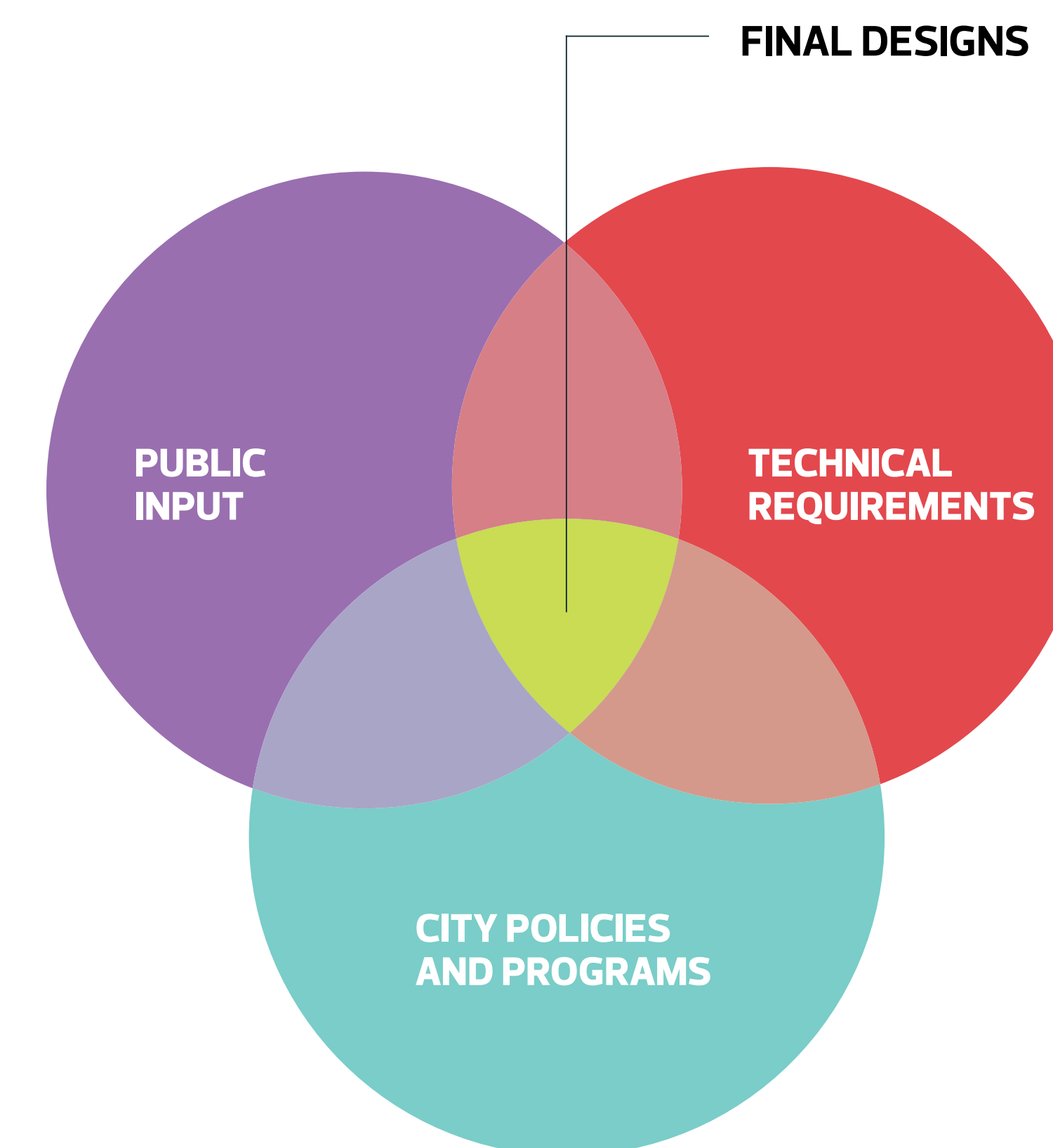
- 1 December 2018 – January 2019**  
Community Walk, Vision and Guiding Principles Workshop and Online Survey
- 2 February 2019**  
Vision Confirmation and Community Options Event
- 3 May 2019**  
Draft Concept Designs Event
- 4 November 2019**  
Refined Designs Event

## Sidewalk Reconstruction

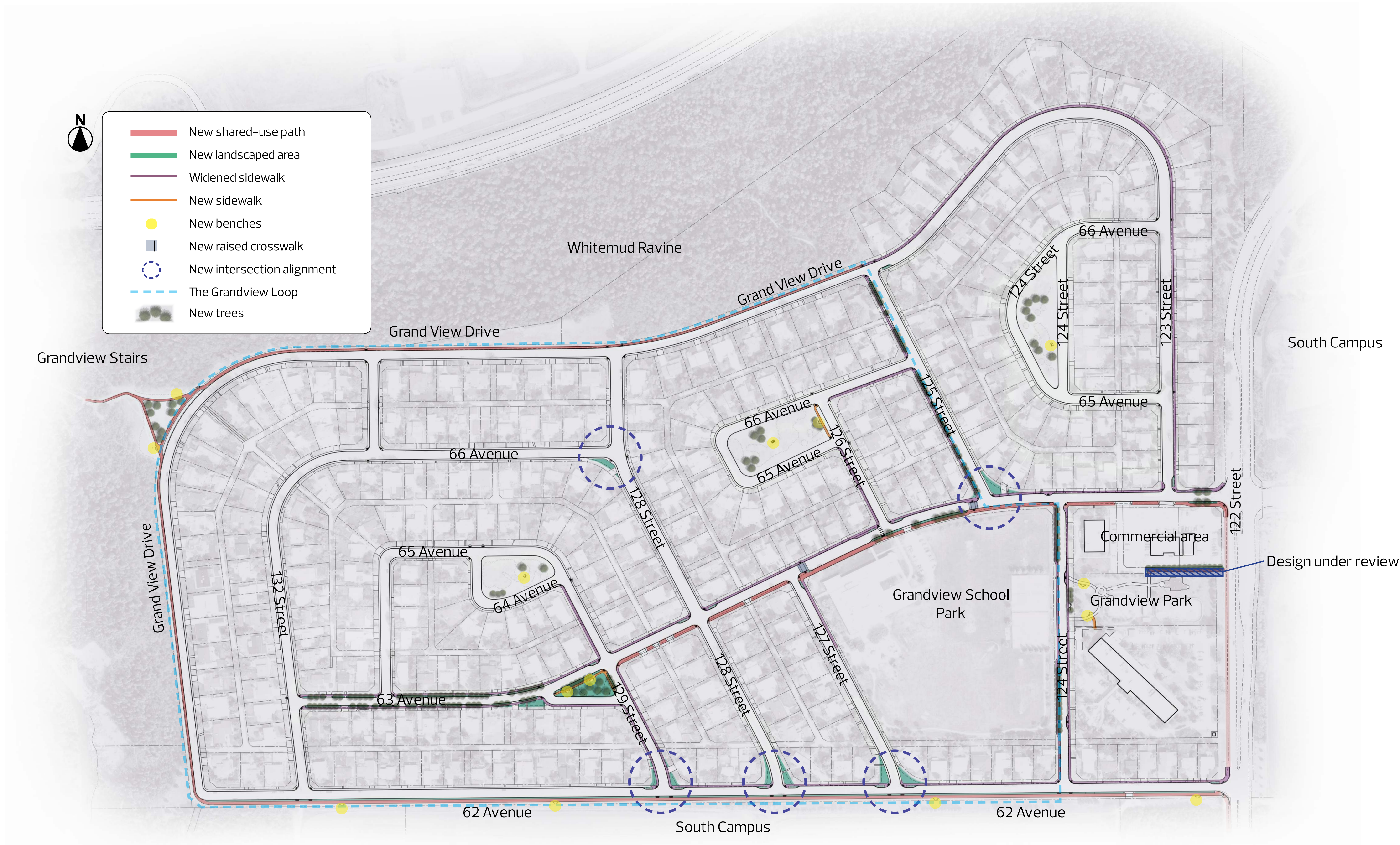
If you are interested in submitting the petition form for sidewalk reconstruction, please proceed to the Sidewalk Reconstruction Station. A Commissioner of Oaths will be present to help you submit your form.

## Decision-making process

It is important to note, that your feedback was one of the considerations when finalizing the designs. We also looked at **City policies and programs, technical requirements, and funding** to determine which designs were chosen to be built.



# Neighbourhood design improvements



SHARE YOUR VOICE  
SHAPE OUR CITY

Edmonton



# Grandview Heights entrance and park

## Final design location

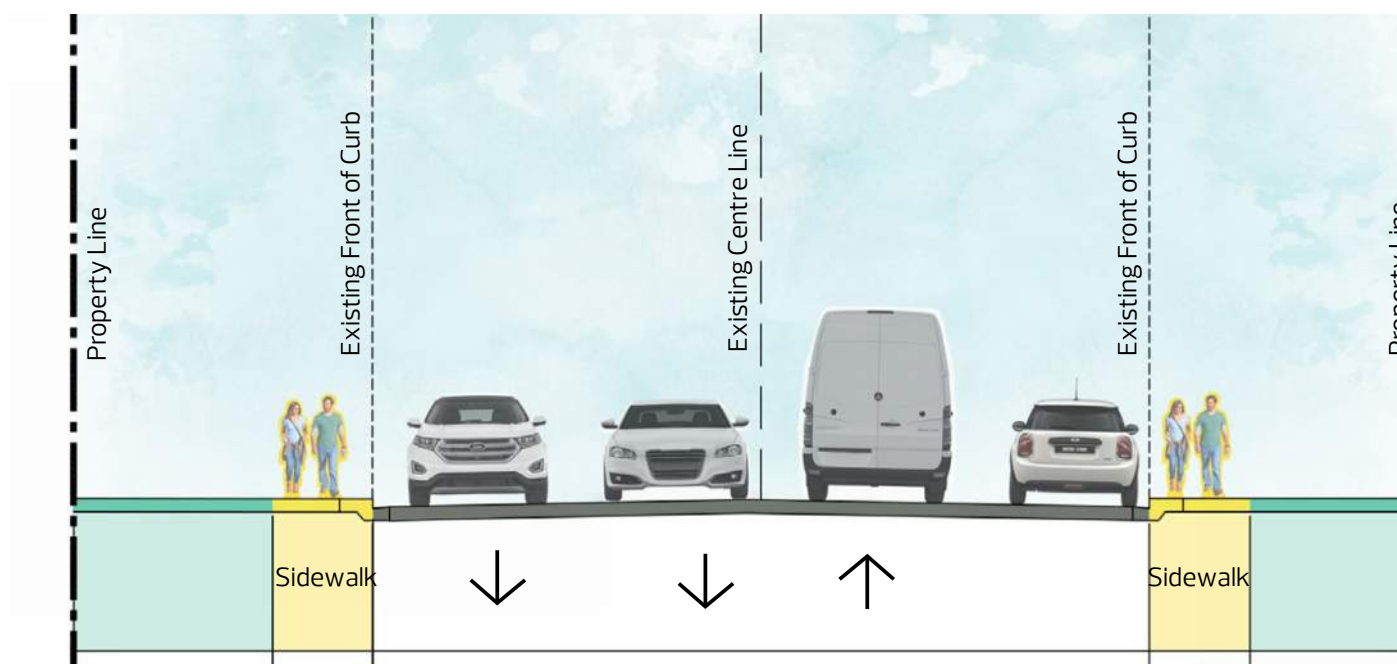


## Design element examples

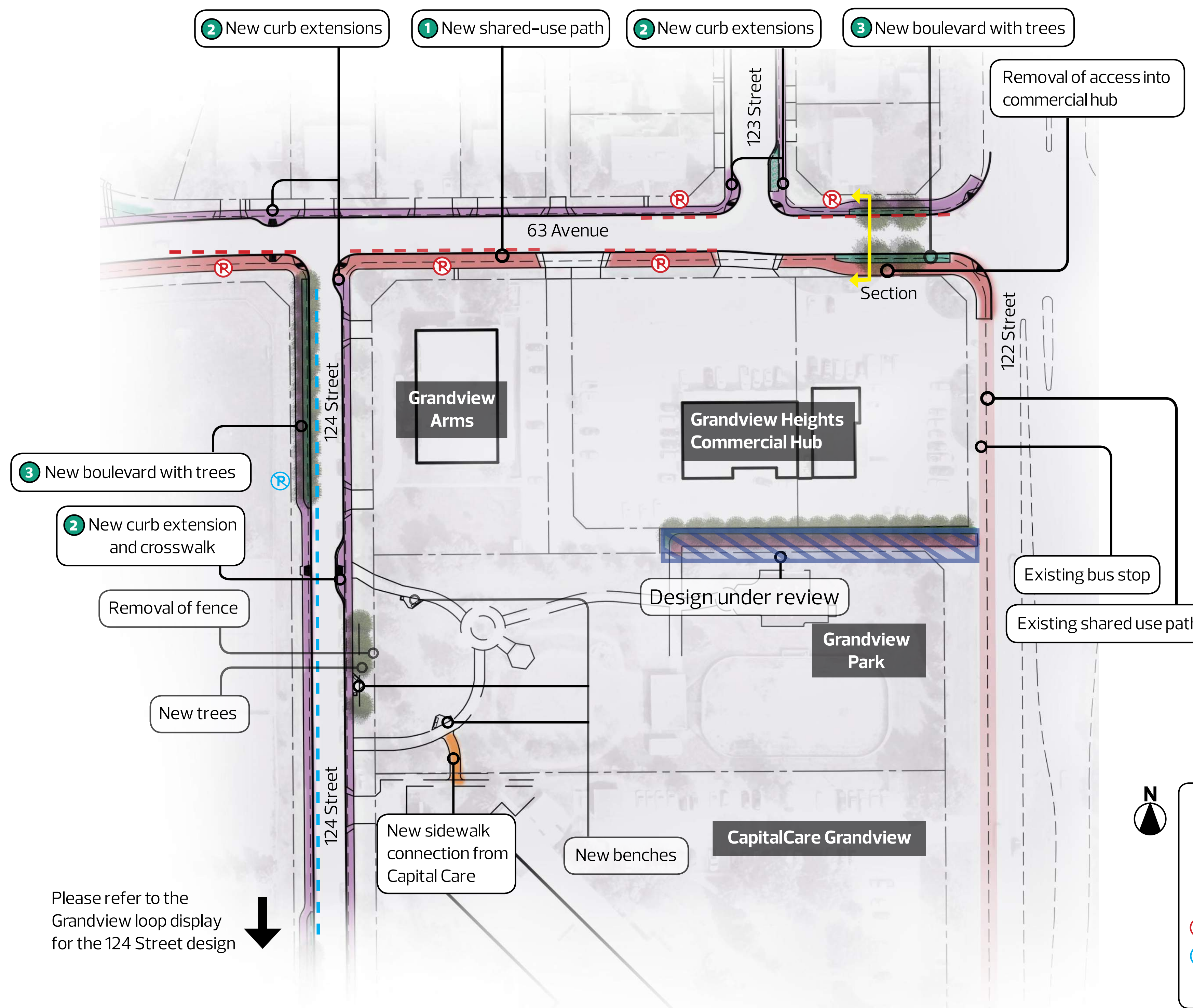
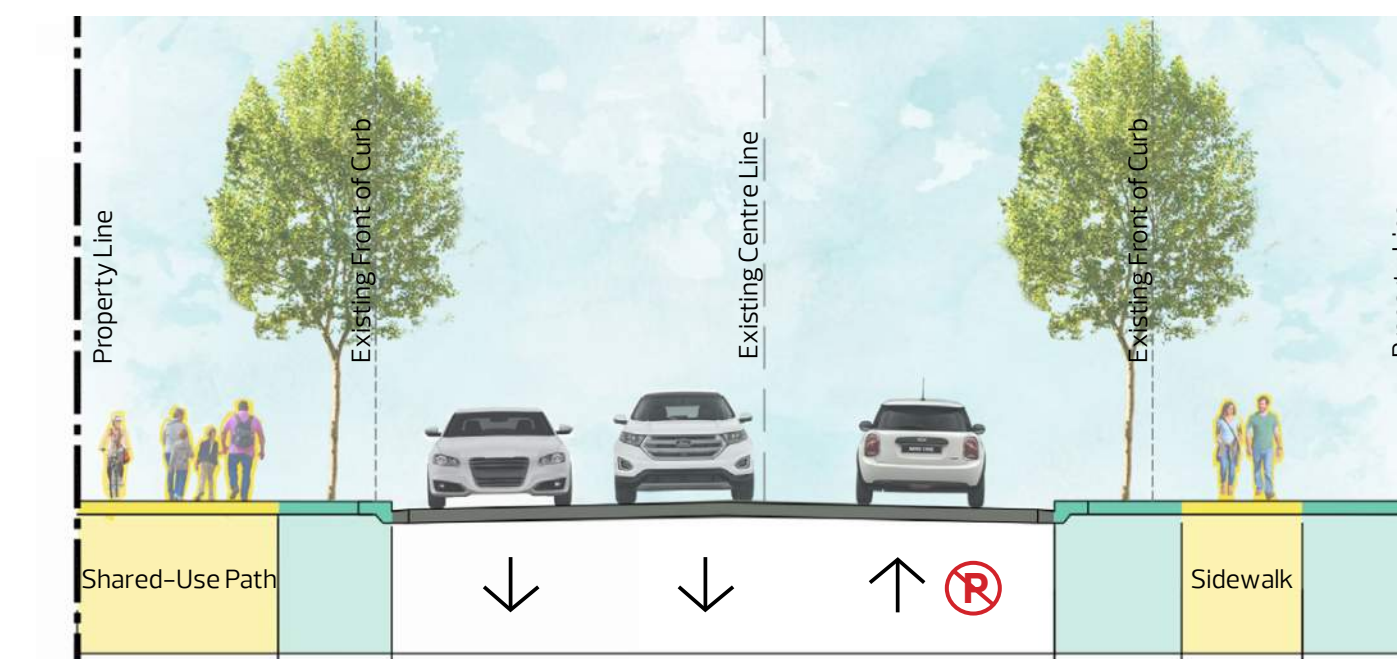


## Section

### EXISTING



### PROPOSED



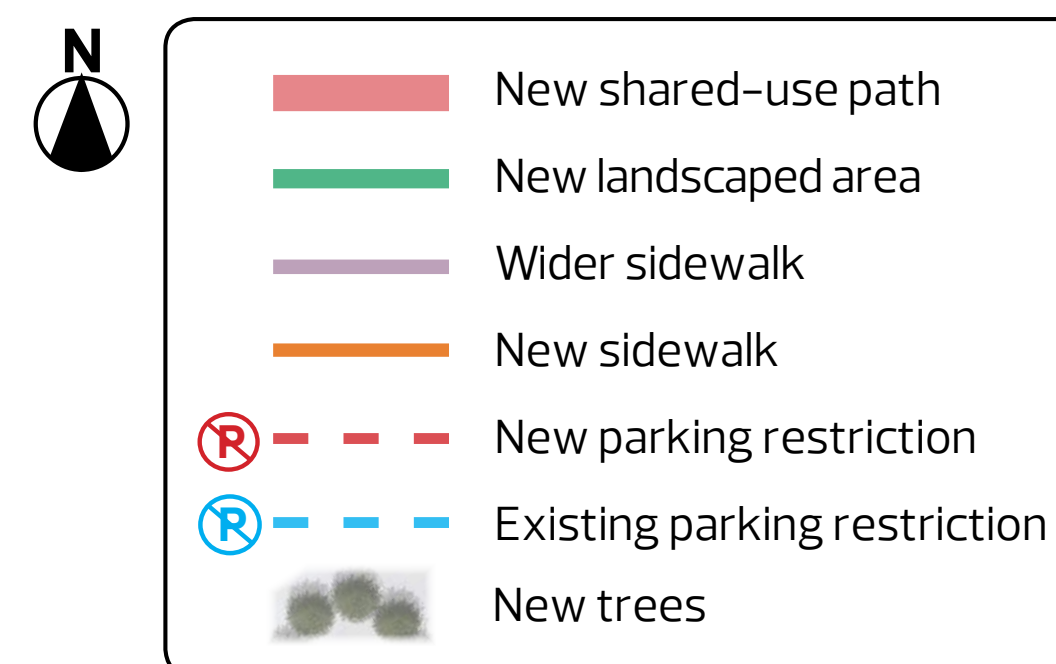
Please refer to the Grandview loop display for the 124 Street design

### What is included in the design...

- + narrowing the road slightly along 63 Avenue to make space for new boulevards with trees near the neighbourhood entrance
- + new shared-use paths to improve the connection to the existing shared-use paths and destinations throughout the neighbourhood
- + the closure of a vehicle access/exit from the commercial area along 63 Avenue
- + new curb extensions to discourage speeding and make it easier to cross the street
- + new parking restrictions along 63 Avenue to accommodate the shared-use path and boulevard with trees
- + removal of the fence along 124 Street in Grandview Park to make the park feel more welcoming
- + new trees and benches to beautify the park and make it more accessible to all
- + new sidewalk connection from CapitalCare Grandview
- + new boulevard with trees along 124 Street

### Changes from the refined designs...

- + the curb extension and crossing at 124 Street was re-positioned to the west side of the street based on public feedback and technical considerations
- + a portion of the new boulevard with trees was removed and the sidewalk re-positioned to accommodate the existing trees



SHARE YOUR VOICE  
SHAPE OUR CITY

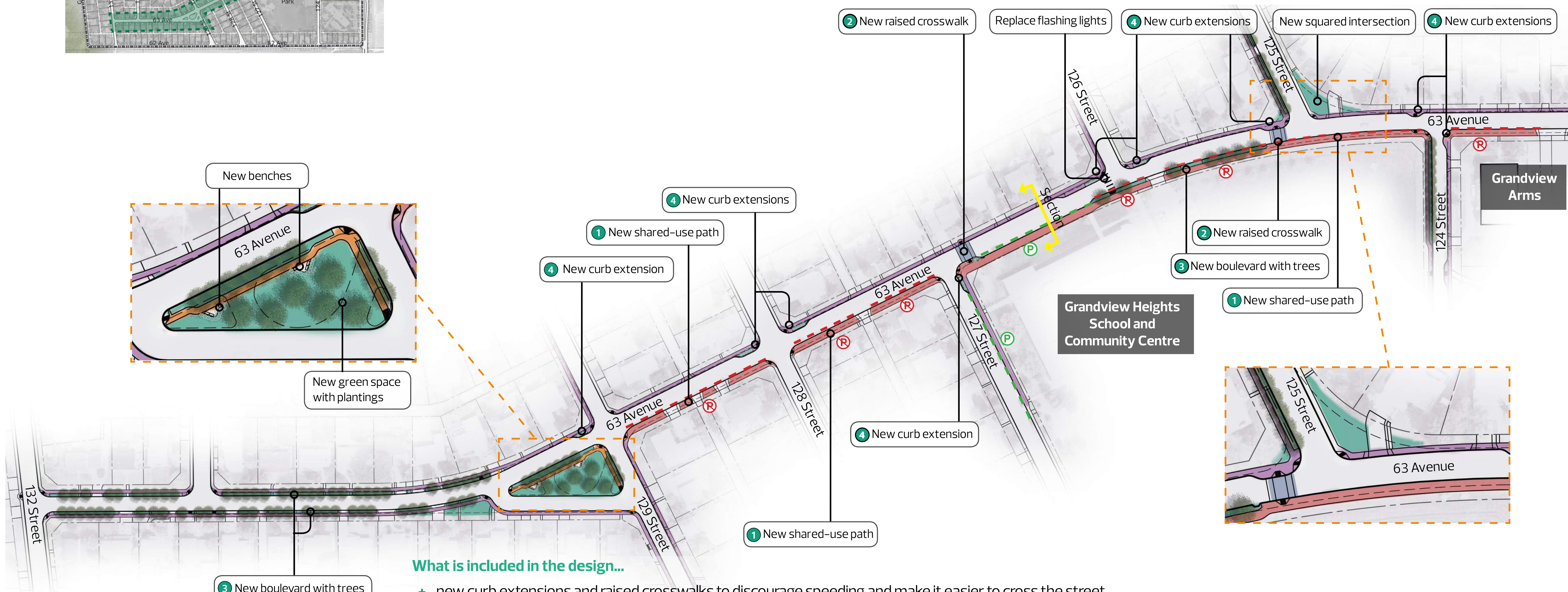
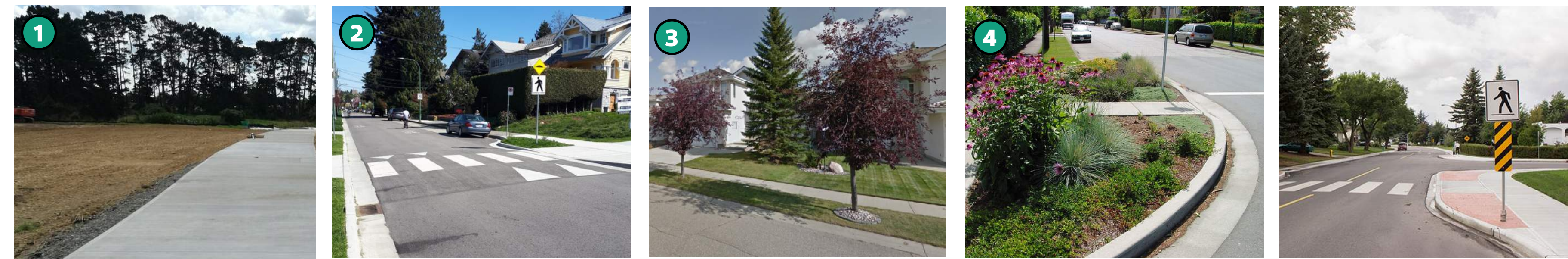
Edmonton

# 63 Avenue improvements

## Final design location



## Design element examples



### What is included in the design...

- + new curb extensions and raised crosswalks to discourage speeding and make it easier to cross the street
- + new boulevards with trees to beautify the corridor and narrow the road to discourage speeding
- + realigned curb at 125 Street and 63 Avenue to create a right-angle intersection to slow traffic and improve sight lines
- + a shared-use path to improve the connection to destinations in the neighbourhood
- + the removal of the bus loop and redesign of the space to create a small green space with plantings, seating areas and a sidewalk
- + new parking restrictions along 63 Avenue to accommodate the shared-use path and boulevard with trees

### Changes from the refined designs...

- + the addition of a curb extension on the northwest corner of 63 Avenue and 129 Street based on public feedback to discourage speeding

**Legend:**

- New shared-use path
- New landscaped area
- Wider sidewalk
- New sidewalk
- New parking restriction
- Pick-up/Drop-off area (Parking permitted)
- New raised crosswalk
- New trees



**SHARE YOUR VOICE**  
**SHAPE OUR CITY**



# The Grandview loop

## Final design location



## Design element examples



## What is included in the design...

- + a new shared-use path to provide improved recreation and physical activity opportunities for all age and abilities in all seasons
- + new seating areas and plantings to create places for people to rest and enjoy nature
- + new curb extensions to discourage speeding and make it safer to cross the street
- + improved connections to nature and the river valley
- + preservation of the existing vegetation and natural area by accommodating most of the shared-use path along Grand View Drive within the existing roadway
- + removal of the existing parking along the ravine between 125 Street and 131 Street to accommodate the shared-use path, minimize impacts to trees and existing natural area and provide an unobstructed view of the ravine
- + realigning the curb by creating right-angle intersections along 62 Avenue to improve visibility and reduce crossing distances

## Changes from the refined designs...

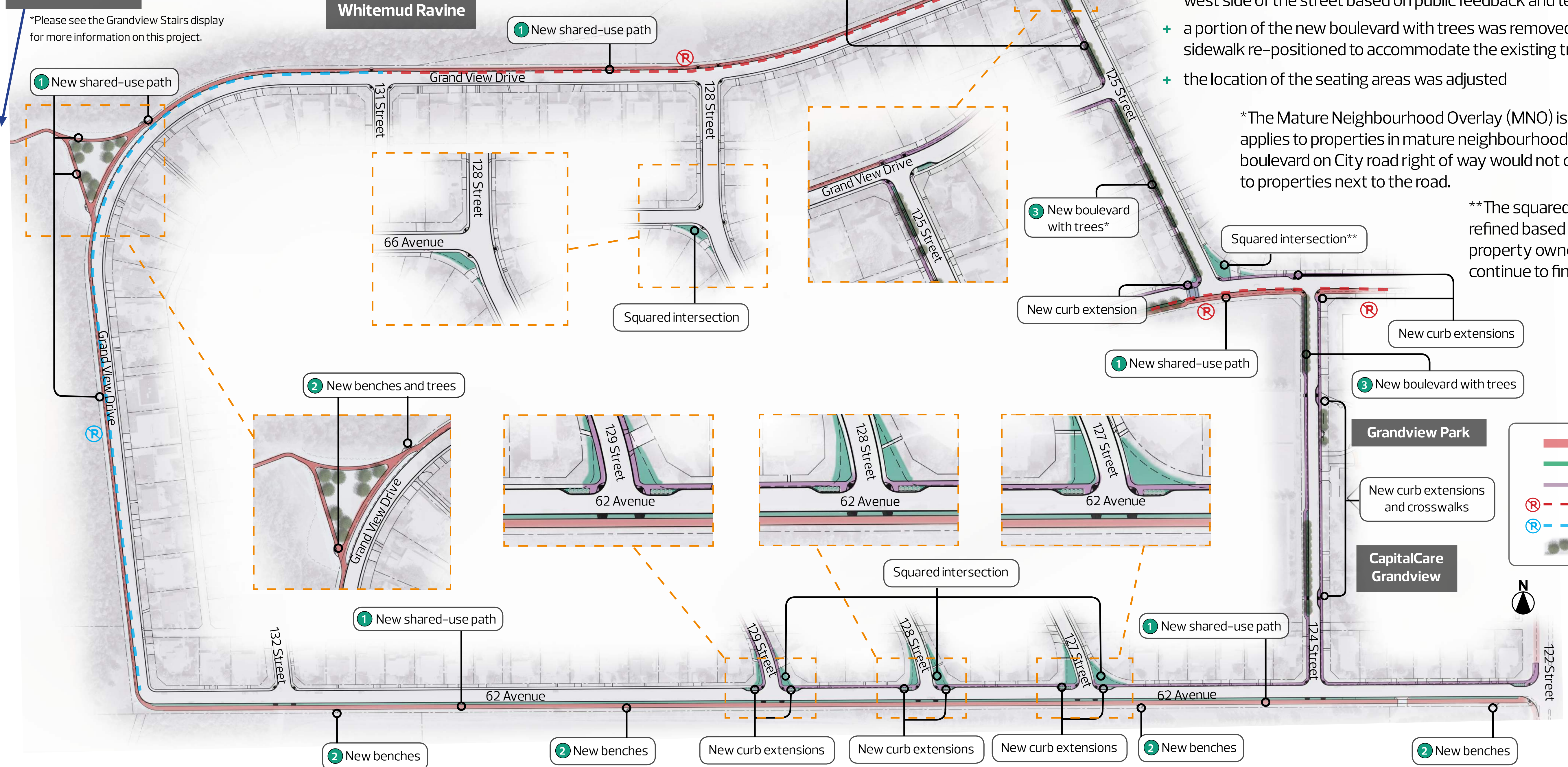
- + the curb extension and crossing at 124 Street and 63 Avenue was re-positioned to the west side of the street based on public feedback and technical considerations
- + a portion of the new boulevard with trees was removed along 124 Street and the sidewalk re-positioned to accommodate the existing trees
- + the location of the seating areas was adjusted

\*The Mature Neighbourhood Overlay (MNO) is a land use zoning regulation that applies to properties in mature neighbourhoods. Introduction of a new treed boulevard on City road right of way would not change how the MNO is applied to properties next to the road.

\*\*The squared intersection designs were refined based on public input from adjacent property owners. Direct conversations will continue to finalize detailed design elements.

## Grandview Stairs

\*Please see the Grandview Stairs display for more information on this project.



	New shared-use path
	New landscaped area
	Wider sidewalk
	New parking restriction
	Existing parking restriction
	New trees

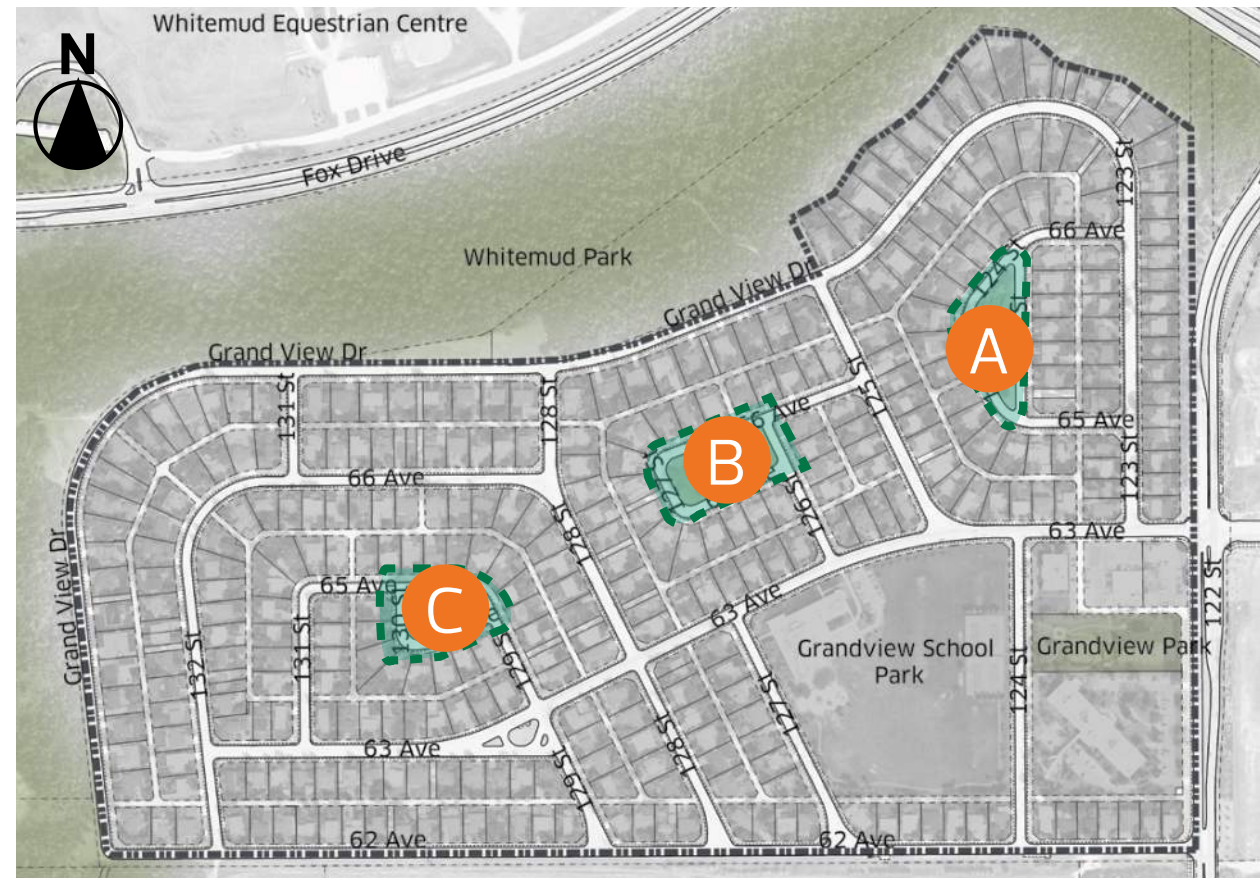
SHARE YOUR VOICE  
SHAPE OUR CITY

Edmonton

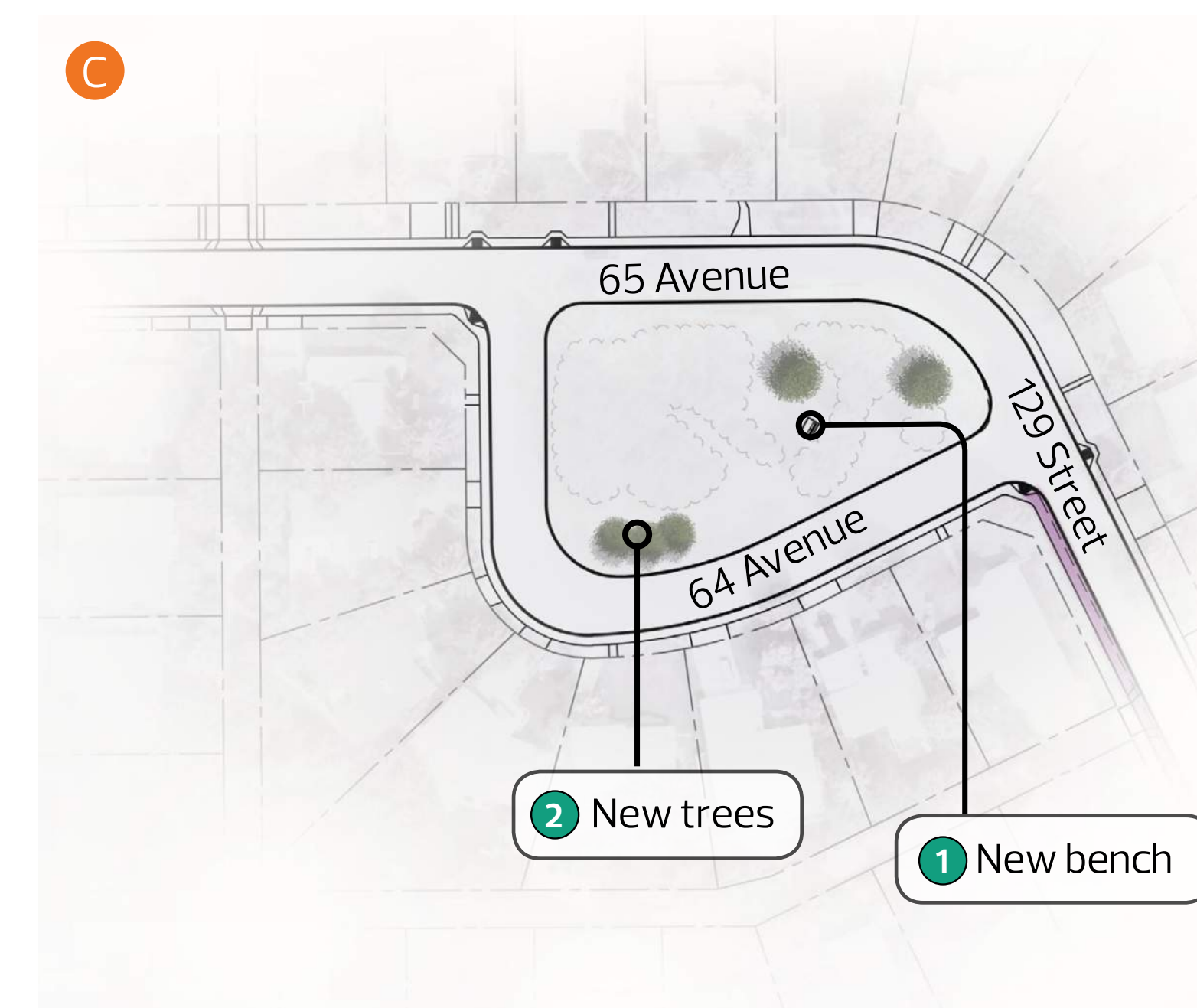
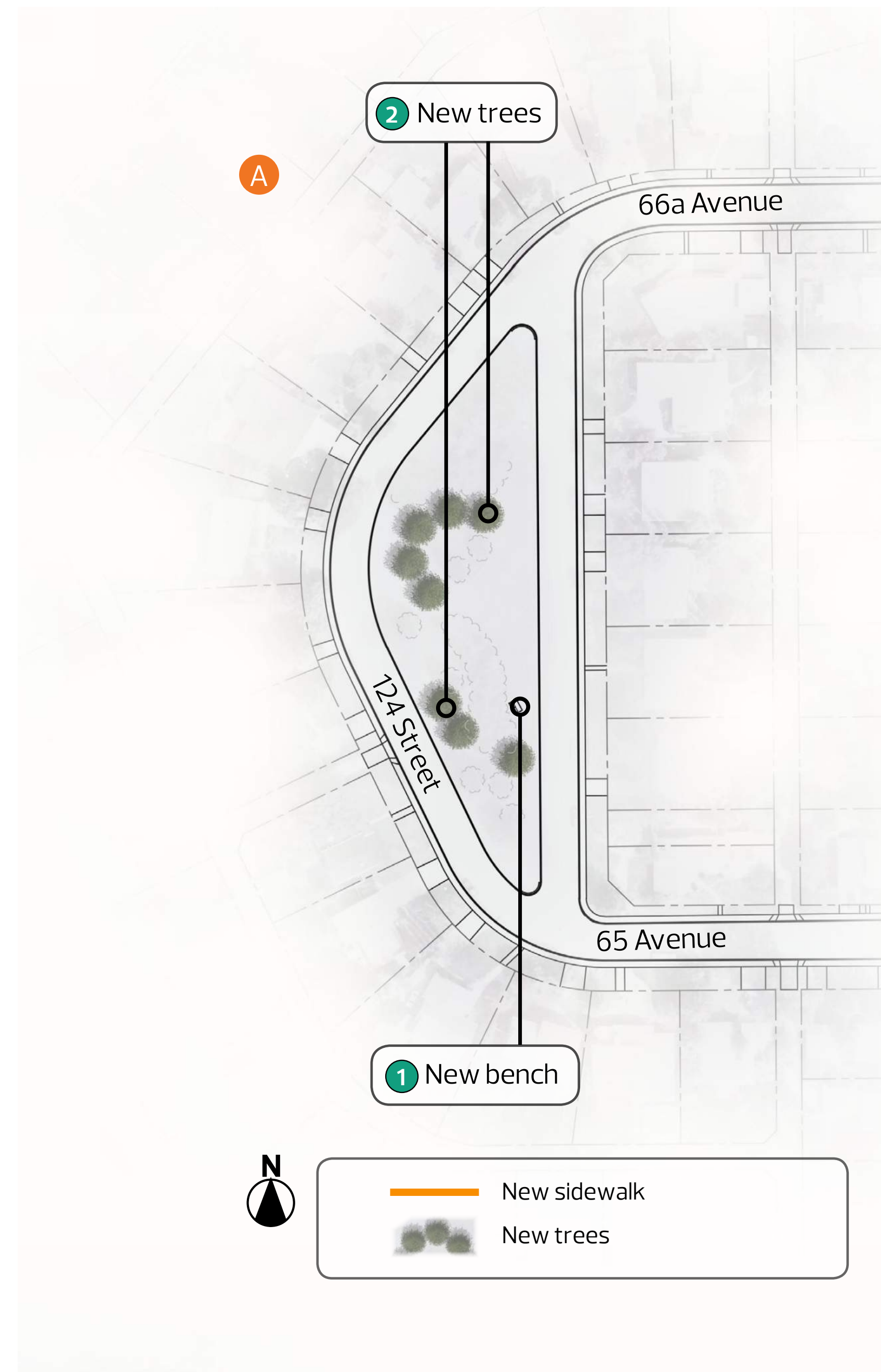


# Pocket park improvements

## Final design location



## Design element examples

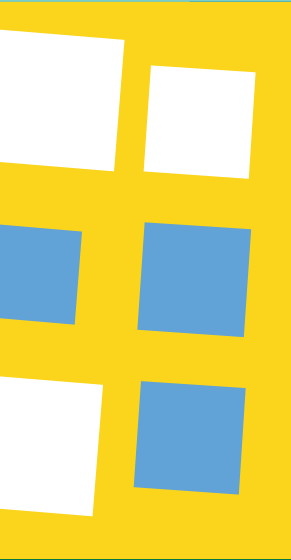


### What is included in the design...

- + new trees to improve the health of the park space and make it feel more welcoming
- + a new sidewalk along 126 Street to improve the connections to the park and through the neighbourhood

### Changes from the refined designs...

- + the removal of the pathway to the centre of the park at 66 Avenue and 126 Street based on public feedback
- + adjustment of planting and seating locations based on public feedback and consideration for existing plants



# Alignment with vision and guiding principles

Do the final designs align with the vision and each guiding principles? Please use the stickers and sticky notes provided.

## Vision:

Grandview Heights is a family-friendly neighbourhood that is welcoming to all. It has a strong community character where neighbours know each other and enjoy the area's connection with nature. Grandview Heights is a safe place where it's easy to move around and enjoy destinations in and around the neighbourhood.

Yes

No

Additional Comments?

## Guiding Principles:



Walkable neighbourhood that is safe and makes it easy for people to move around

Yes

No

Additional Comments?



Enhancing green spaces and preserving trees

Yes

No

Additional Comments?



Maintaining the quietness and peacefulness of the neighbourhood

Yes

No

Additional Comments?



Highlighting and maintaining the distinctive and unique look of the community

Yes

No

Additional Comments?



Giving people alternative options to get around other than driving (walking, biking)

Yes

No

Additional Comments?



Making the neighbourhood accessible for all ages and abilities

Yes

No

Additional Comments?

SHARE YOUR VOICE  
SHAPE OUR CITY

Edmonton