



# WELCOME

## Garneau Neighbourhood Renewal

### Exploring Options

- + Learn everything you can
- + Ask questions of the project team
- + Share all your ideas

Learn more about this project: [edmonton.ca/BuildingGarneau](https://edmonton.ca/BuildingGarneau)

Edmonton

# Concept Phase Engagement Schedule

WE ARE HERE

**November 2018 –  
April 2019**

Building a  
Project Vision  
Together

**May 2019 –  
November 2019**

Exploring  
Opportunities

**December 2019 –  
March 2020**

Exploring  
Options and  
Trade-offs

**April 2020**

Community  
Feedback on  
Draft Design  
(final concept)

Learn more about this project: [edmonton.ca/BuildingGarneau](https://edmonton.ca/BuildingGarneau)

Edmonton



# What we have done to date

Since we launched Garneau's renewal, we have been busy collecting information from residents and other stakeholders to help us better understand Garneau:

- + Visioning survey [November/December 2018] – **144 respondents**
- + Community Walk and Ideas Workshop [April 2019] – **44 participants**
- + Online engagement [June–August 2019] – **56 comments**
- + Pop-up engagements [June–August 2019] – **approximately 100 people engaged**
- + Meetings with area stakeholders [January–August 2019] – **7 meetings**
- + Meetings with internal City partners/projects, including:
  - + Residential Parking
  - + Southside Bike Network
  - + Community Traffic Management
  - + Envision 109 Streetscape Vision
  - + Centre LRT Study

Learn more about this project: [edmonton.ca/BuildingGarneau](https://edmonton.ca/BuildingGarneau)

Edmonton

# Today's purpose

Based on all we have heard to date, we have prepared and are presenting some ideas for how infrastructure and open space could be improved and enhanced in your neighbourhood.

Let us know what you think!

Some ideas may be part of neighbourhood renewal, others require other sources of funding or for the community to lead certain initiatives (for example, park improvements).

New infrastructure will be in place for the next 30 to 50 years.

Let's get it right and think about the future!

Learn more about this project: [edmonton.ca/BuildingGarneau](https://edmonton.ca/BuildingGarneau)

Edmonton



# What's next

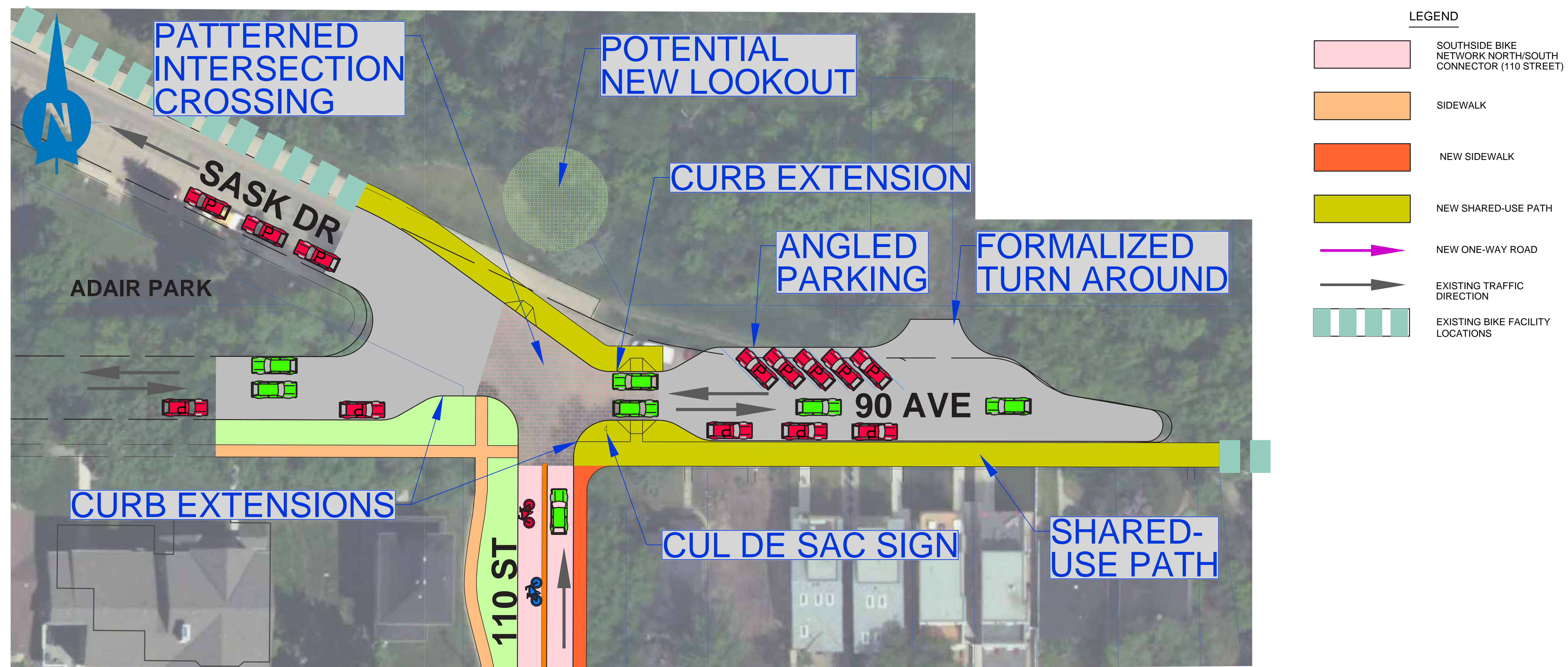
- + Input received during this event and the following online engagement (closes October 5th) will be used to develop more refined design options for the future of the neighbourhood.
- + The more refined design options will be shared and discussed, and feedback will be invited in November 2019.
- + Watch for more details about the next event in the coming weeks.

Learn more about this project: [edmonton.ca/BuildingGarneau](https://edmonton.ca/BuildingGarneau)

Edmonton



# 90 Avenue connection: opportunities for discussion

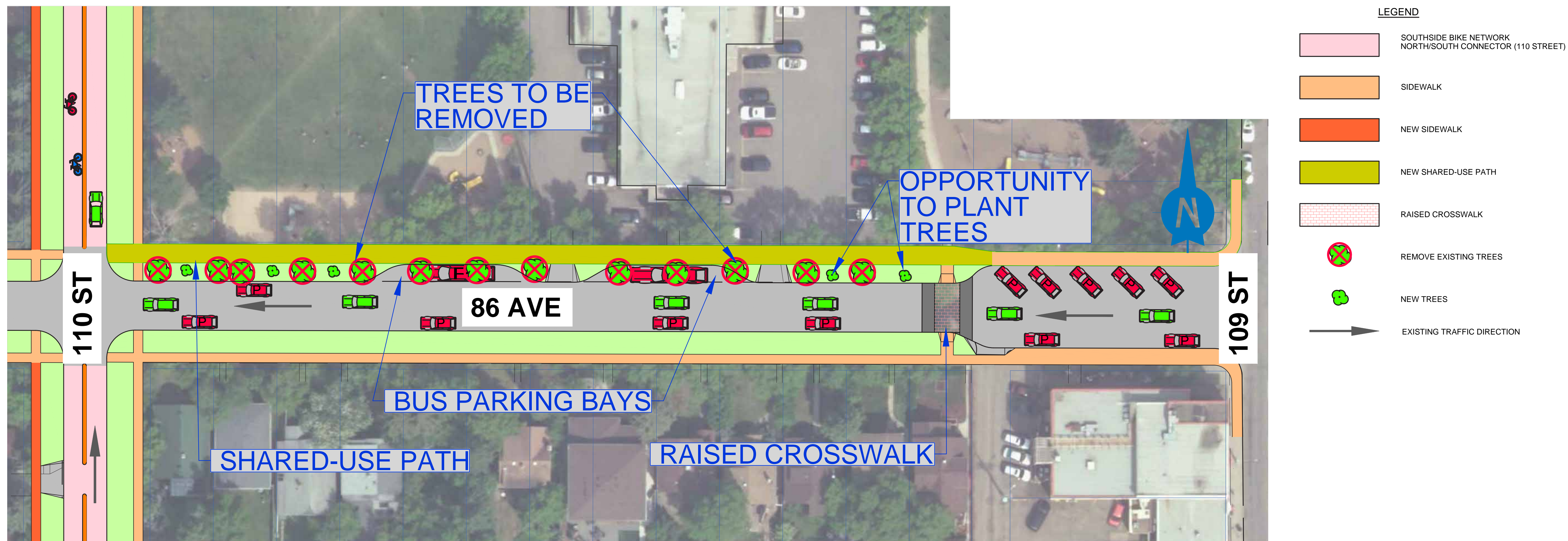


Learn more about this project: [edmonton.ca/BuildingGarneau](http://edmonton.ca/BuildingGarneau)





# Garneau School: opportunities for discussion



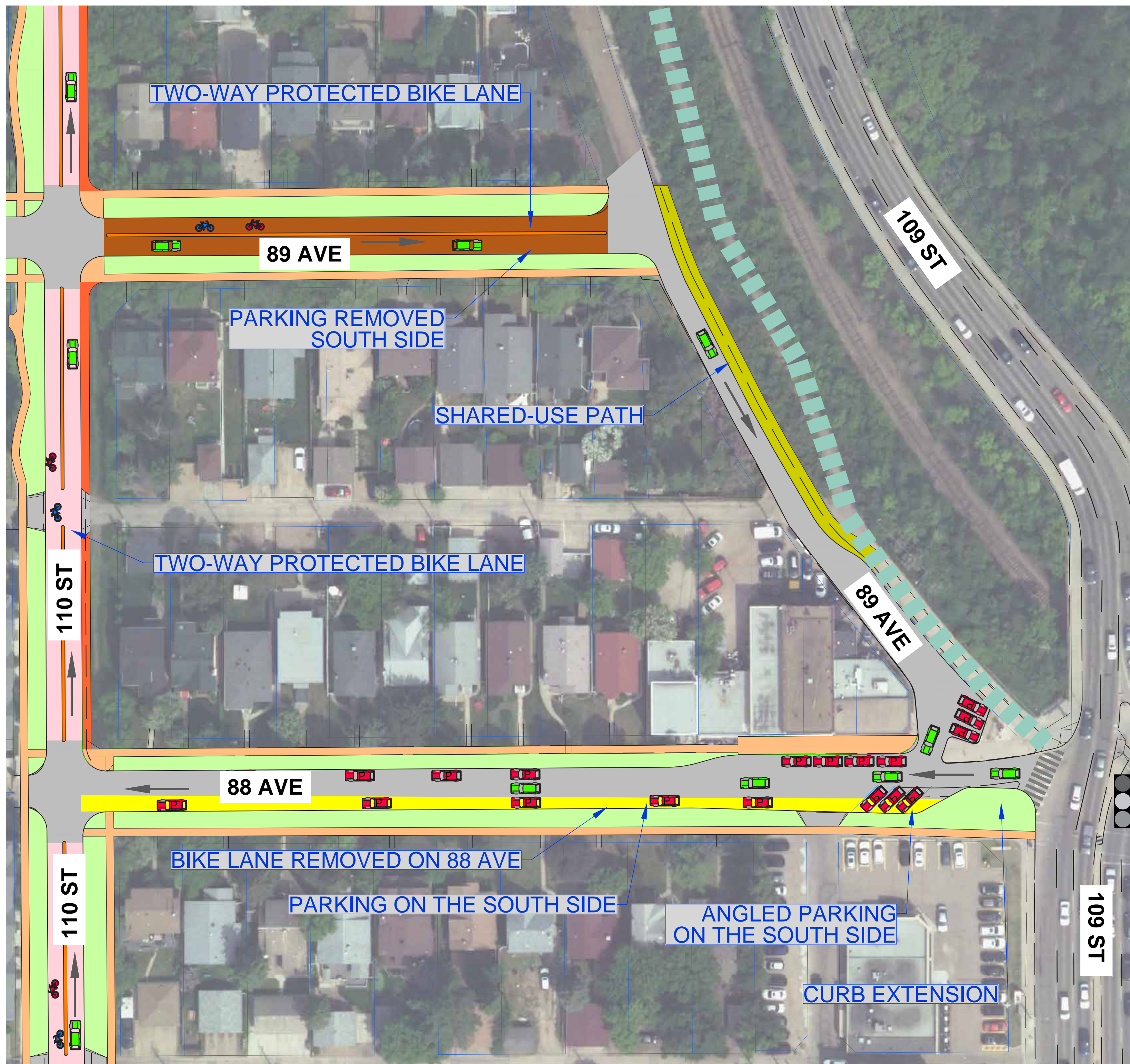
Learn more about this project: [edmonton.ca/BuildingGarneau](https://edmonton.ca/BuildingGarneau)



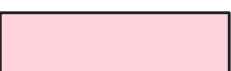











# Garneau bike facilities

## 88 Avenue and 89 Avenue connections: opportunities for discussion



LEGEND

	SOUTHSIDE BIKE NETWORK NORTHSOUTH CONNECTOR (110 STREET)		CONCRETE MEDIAN
	89 AVE BIKE CONNECTION		REMOVE EXISTING BIKE LANE
	NEW SHARED-USE PATH		EXISTING FULL TRAFFIC SIGNAL
	EXISTING BIKE FACILITY LOCATIONS		EXISTING TRAFFIC DIRECTION
	SIDEWALK		
	NEW SIDEWALK		

Learn more about this project: [edmonton.ca/BuildingGarneau](http://edmonton.ca/BuildingGarneau)

Edmonton





# Types of bike facilities



SHARED-USE PATH



SHARED STREET



RAISED BIKE LANE



PROTECTED BIKE LANE



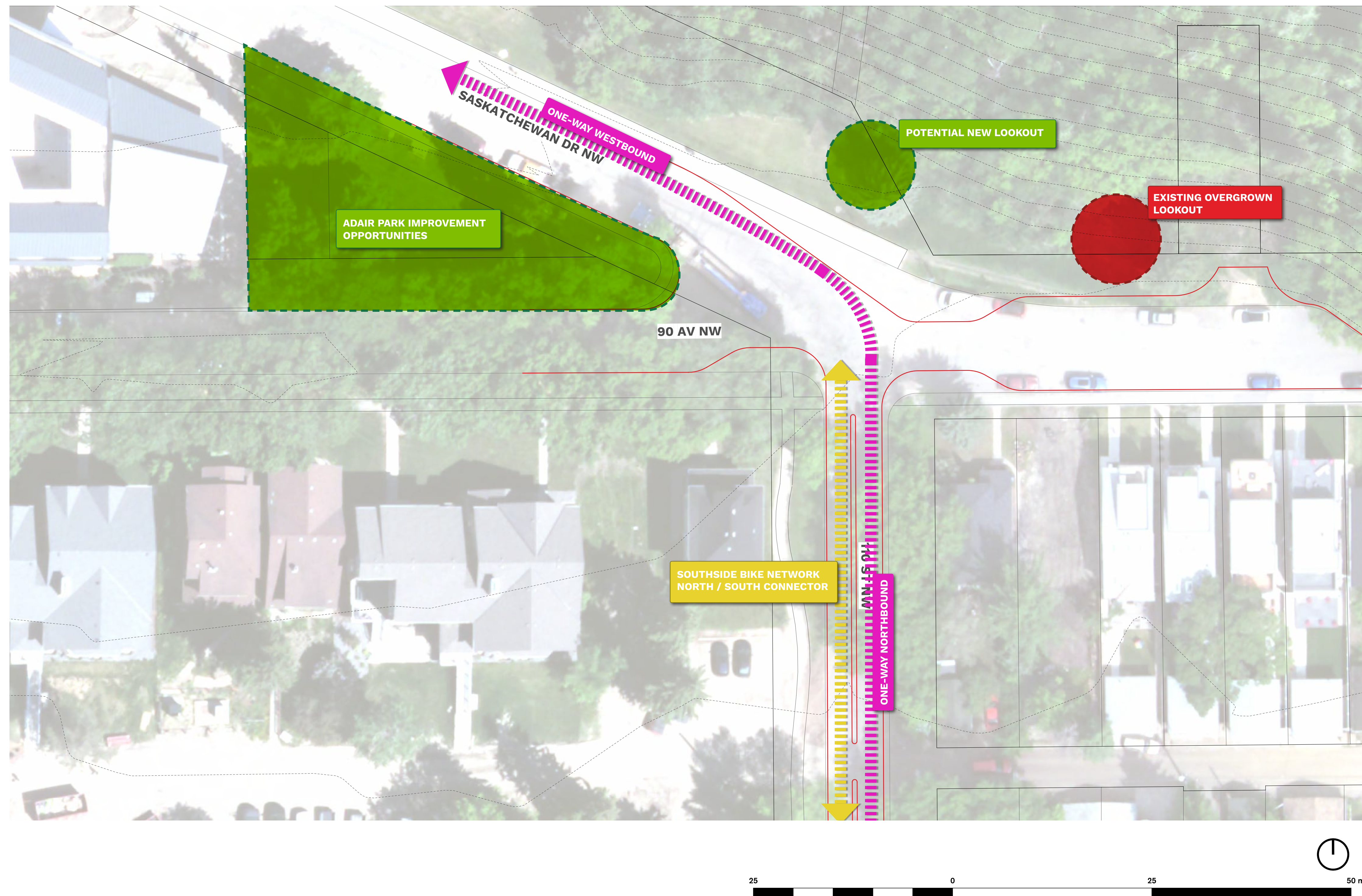
COUNTERFLOW BIKE LANE

Learn more about this project: [edmonton.ca/BuildingGarneau](https://edmonton.ca/BuildingGarneau)

Edmonton



# 90 Avenue: existing conditions and opportunities

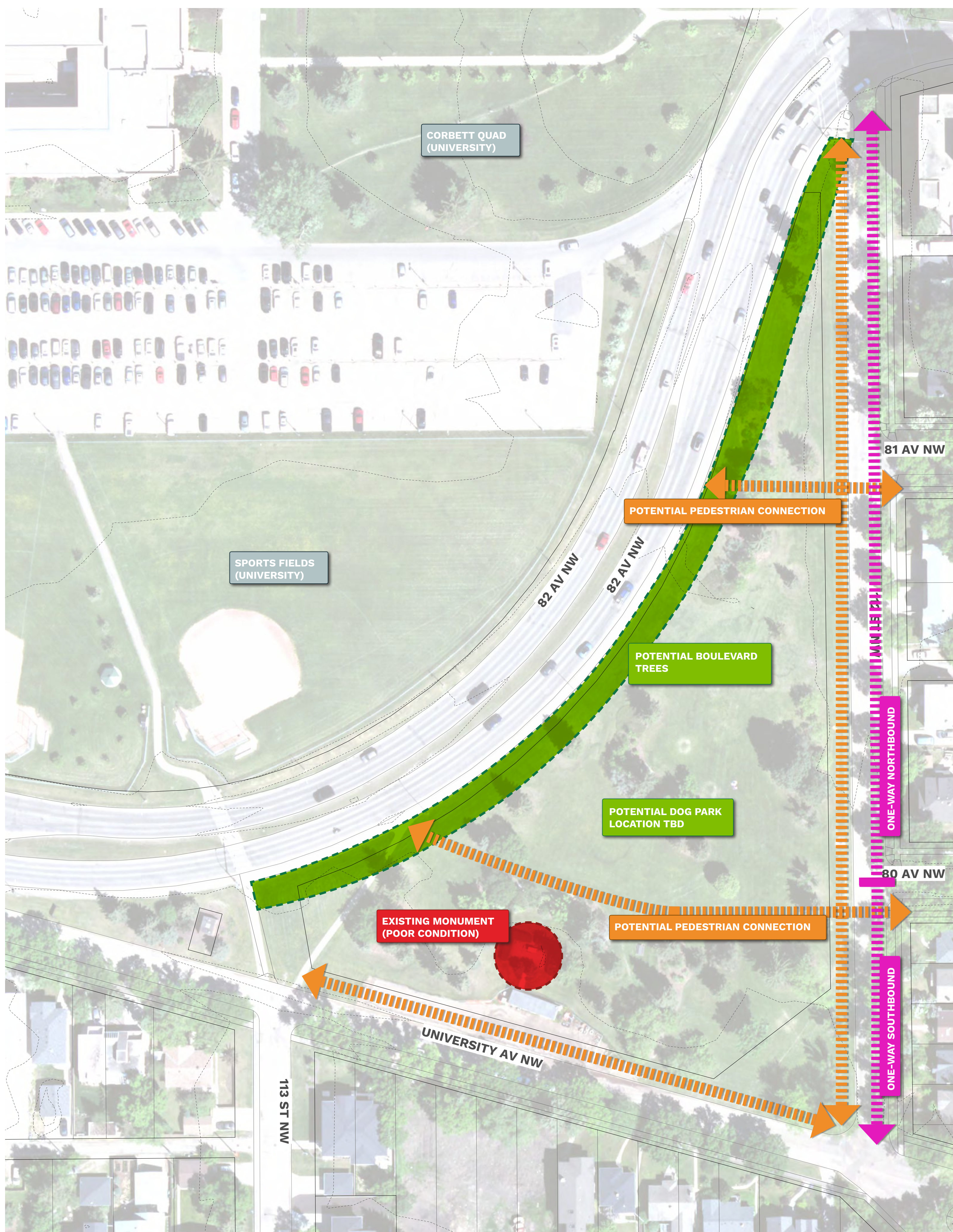


Learn more about this project: [edmonton.ca/BuildingGarneau](http://edmonton.ca/BuildingGarneau)



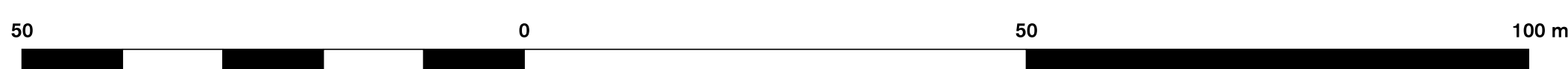


# Braithwaite Park: existing conditions and opportunities



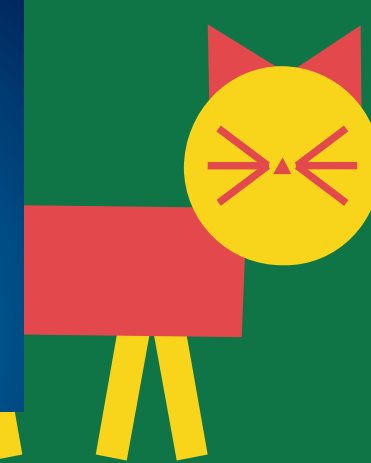
**LEGEND**

- |                              |                   |
|------------------------------|-------------------|
| <b>CURBS &amp; SIDEWALKS</b> | <b>CONTOURS</b>   |
| — Proposed Curbs             | ..... 1m Interval |
| — Existing Curbs             |                   |
| — Sidewalks                  |                   |



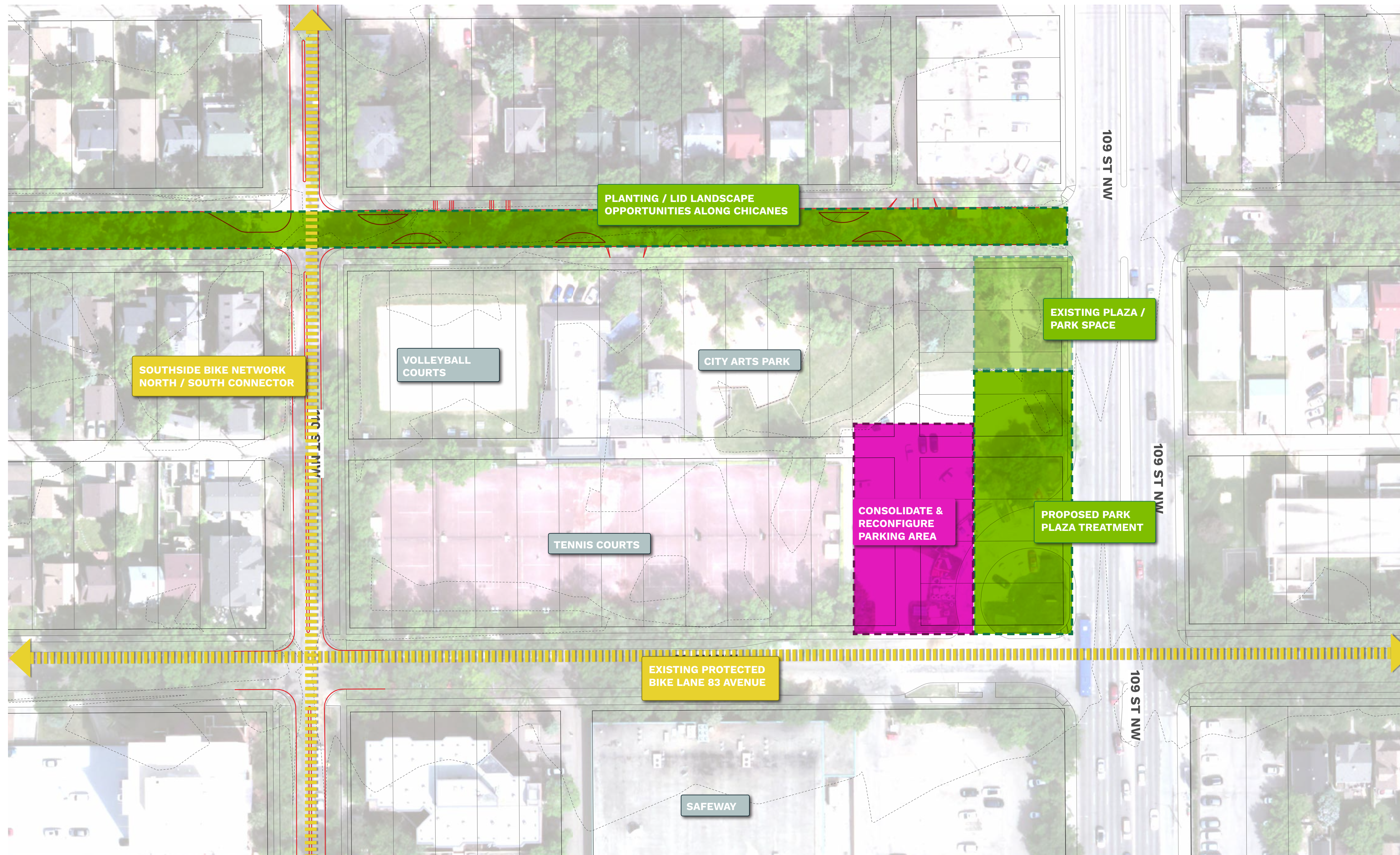
Learn more about this project: [edmonton.ca/BuildingGarneau](http://edmonton.ca/BuildingGarneau)

Edmonton





# City Arts Centre Park: existing conditions and opportunities



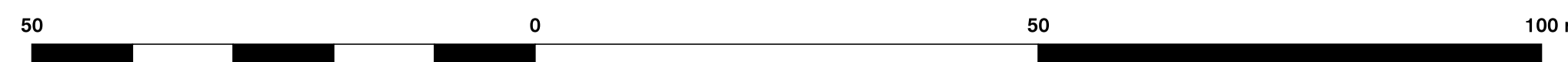
**LEGEND**

**CURBS & SIDEWALKS**

- Proposed Curbs
- Existing Curbs
- Sidewalks

**CONTOURS**

- 1m Interval



Learn more about this project: [edmonton.ca/BuildingGarneau](http://edmonton.ca/BuildingGarneau)

Edmonton

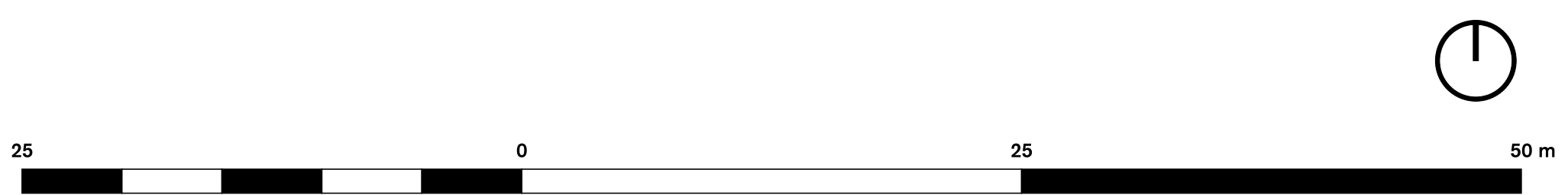


# Unnamed Park (107 Street/86 Avenue): existing conditions and opportunities



**LEGEND**

CURBS & SIDEWALKS	CONTOURS
— Proposed Curbs	..... 1m Interval
— Existing Curbs	
— Sidewalks	

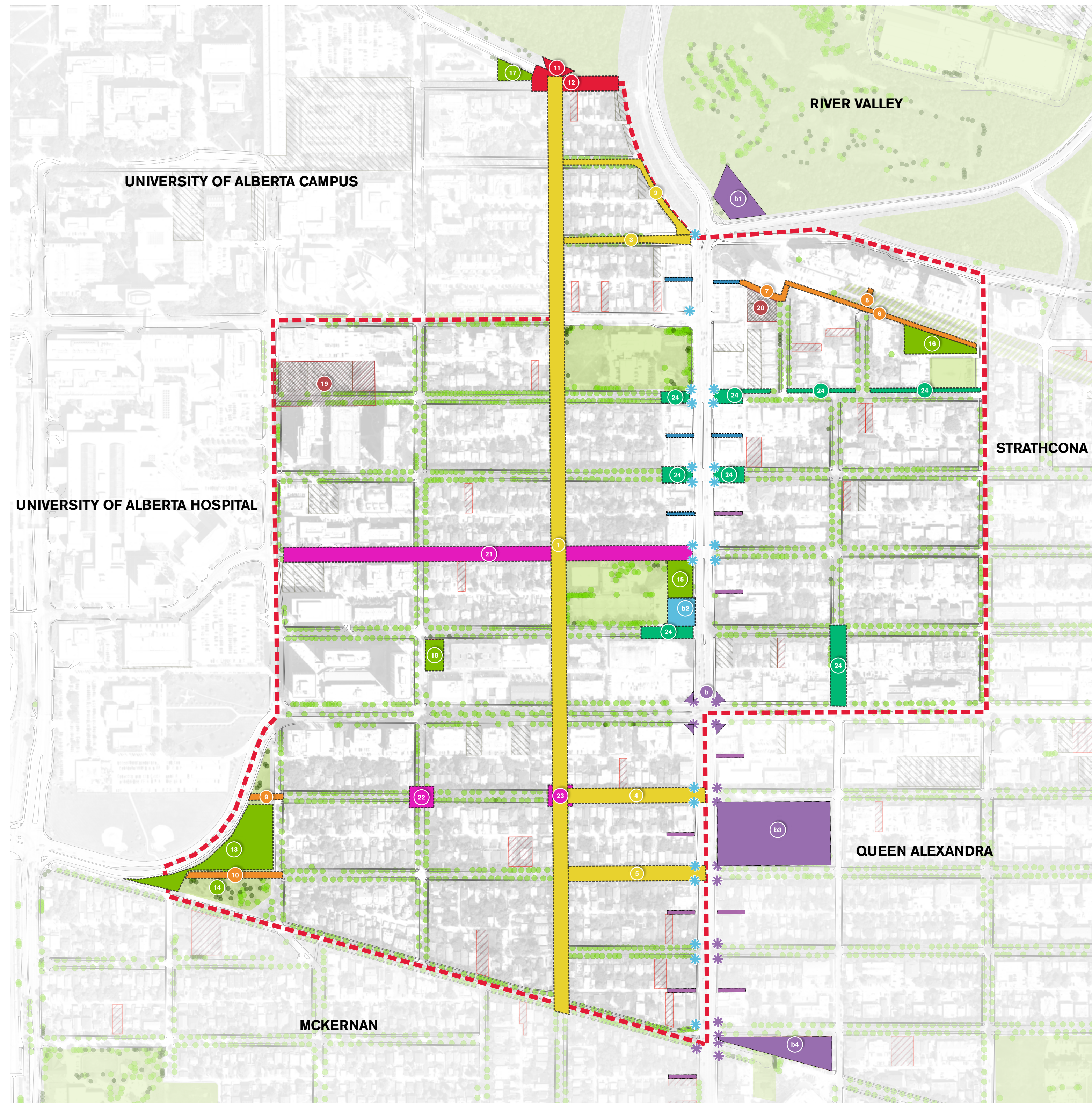


Learn more about this project: [edmonton.ca/BuildingGarneau](http://edmonton.ca/BuildingGarneau)





# Inventory of opportunities



## Garneau Opportunities For Discussion

**Bicycle Connections**

ID#	Location	Description
1	110 Street	Install protected "all ages" bike facility in conjunction with City south side bike grid
2	89 Avenue	Install protected all ages bike facility
3	88 Avenue	Remove bicycle connection
4	81 Avenue	Install protected all ages bike facility
5	80 Street	Install protected all ages bike facility

**Improved Connections**

ID#	Location	Description
6	Between 108A and 107 Streets Along Rail Corridor	Formalize informal path along rail corridor to back alley network near 109 Street
7	Between 108A & 109 Streets Along Alleyway	Enhanced alleyway connection in conjunction with proposed development at the north end of 108A Street
8	Rail Corridor	Long-term potential for bridge / gateway feature in conjunction with the potential High Line project. Enhances pedestrian connectivity for residences north of the rail corridor.
9	Braithwaite Park	Connect desire lines through park to existing pedestrian connections
10	Braithwaite Park	Connect desire lines through park to existing pedestrian connections

**90 Avenue Improvements**

ID#	Location	Description
11	Saskatchewan Drive & 110 Street	Create viewpoint park at terminus of 110 Street
12	Saskatchewan Drive & 90 Avenue	Very wide intersection, with lots of drivers that try to find a connection through at the east end of 90 Avenue

**Park Improvements**

ID#	Location	Description
13	Braithwaite Park	Enhancements to park such as addition of dog park or community gardens, new pedestrian connections, etc.
14	Braithwaite Park	Improve or remove existing park feature / structure. Memorial structure here bordered by hedges, but it is in bad repair and appears to be a camp / litter spot
15	City Arts Centre Park	Enhancements to park in conjunction with removal and repurposing of bus turnaround
16	Unnamed "Wedge" Park	Reimagine and improve this currently under-utilized park with an unknown name at the edge of the rail corridor
17	Adair Park	Consider improvements to Adair Park at Saskatchewan Drive and 110 Street
18	83 Avenue & 111 Street	Consider potential to formalize community garden that is currently under private ownership

**Developments**

ID#	Location	Description
19	86 Avenue & 112 Street	Define streetscape upgrades that can be made in conjunction with proposed adjacent redevelopment
20	108A Street, adjacent to north & west alleys	Define streetscape and alley upgrades that can be made in conjunction with proposed adjacent redevelopment

**Traffic**

ID#	Location	Description
21	84 Avenue	Opportunity to enhance a portion, or all of 84 Avenue between 109 Street and 112 Street with redesigned chicanes and angled or parallel parking
22	81 Avenue & 111 Street	Wide intersection with opportunity to revise curbs or explore traffic calming
23	81 Avenue & 110 Street	Wide intersection with opportunity to revise curbs or explore traffic calming

**Tree Planting**

ID#	Location	Description
24	Several Locations	Opportunity to plant missing trees if possible given curb and roadway alignments, and utilities

## 109 Streetscape Design Vision Improvements

ID#	Type	Description
b	Triangular Plaza Setback	Triangular setback or small landscaped private or public park on commercially zoned street corners between 70-72 Avenue
b1	109 Street & Saskatchewan Drive Viewpoint	Add viewpoint / park at northern terminus of 109 St and Sask Drive intersection
b2	City Arts Centre Park Optimization	Remove bus turnaround and repurpose as additional park space to be added to City Arts Centre Park
b3	Tipton Park	Possible improvements to be determined by 109 Streetscape Project
b4	Joe Morris Park	Possible improvements to be determined by 109 Streetscape Project

Pedestrianized Alleys		Proposed Curb Extensions	
	Long-Term		Long-Term
	Short-Term		Short-Term

## LEGEND

- GARNEAU BOUNDARY
- Land Use**
- Storage
- Parking
- Undeveloped or Vacant Land
- Parks & Open Space
- River Valley / Ravines
- Rail Corridor
- Trees**
- DECIDUOUS
- CONIFEROUS

Learn more about this project: [edmonton.ca/BuildingGarneau](http://edmonton.ca/BuildingGarneau)

Edmonton