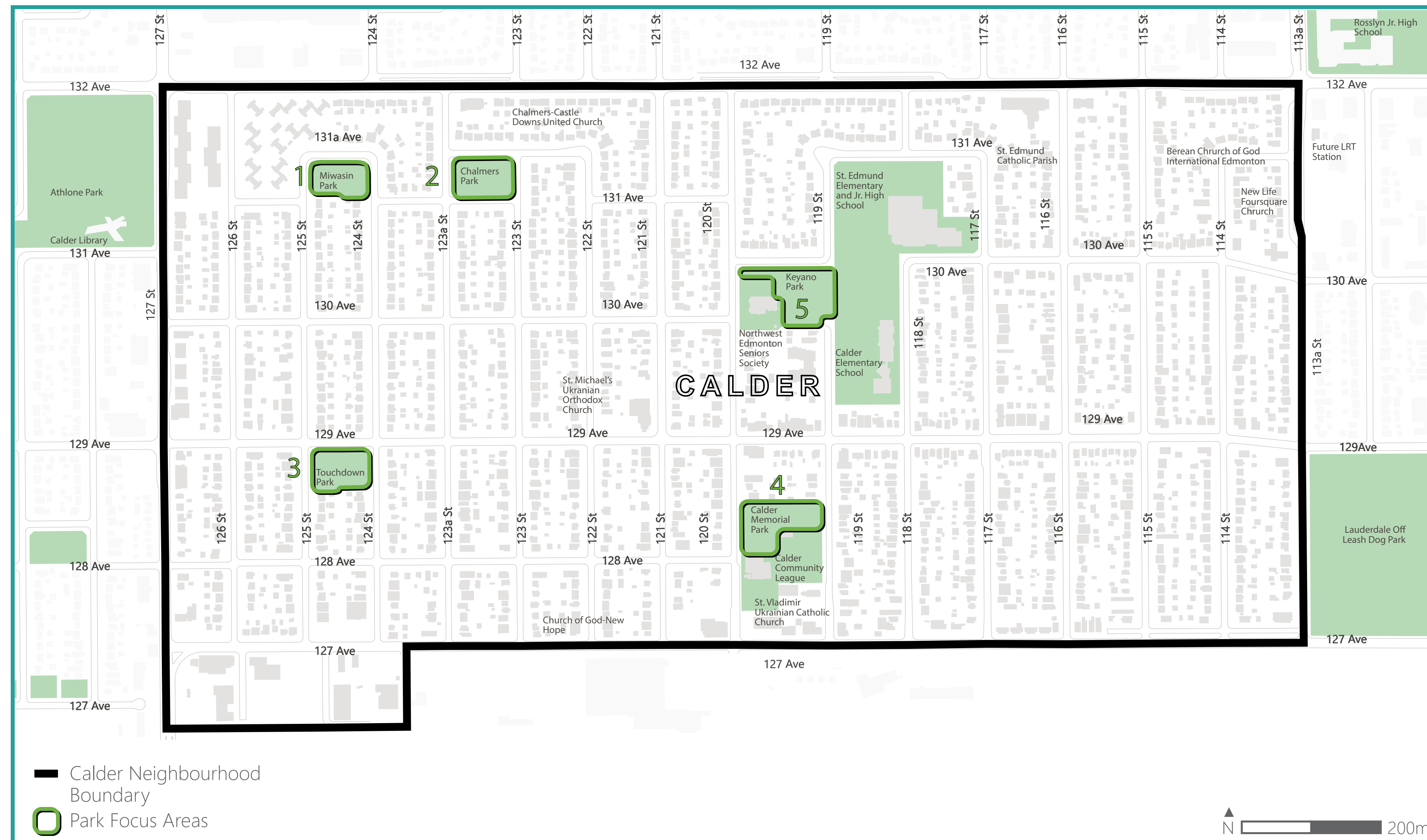


# Parks overview



## Parks

1. Miwasin Park upgrades
2. Chalmers Park upgrades
3. Touchdown Park upgrades
4. Calder Memorial Park upgrades
5. Keyano Park upgrades

## What We Heard

- + Amenities: The community feels that adding garbage receptacles, BBQ pits, seating and lighting top parks will encourage use.
- + Connectivity and accessibility: It is important to the public that pathways are enhanced and added where possible.
- + Facilities: There is interest in the neighbourhood to pursue community led park facilities (i.e., community garden, playground equipment, basketball court and horseshoe pits).
- + Maintenance: It is important to the community that parks and greenery are maintained to enhance beauty and maintain sightlines.

**SHARE YOUR VOICE**  
**SHAPE OUR CITY**

**Edmonton**



**ADVISE**

# 1 Miwasin Park upgrades



- New pathway
- Widen existing pathway
- Existing sidewalk
- Remove existing pathway

## What we propose

-  + Add a new east to west pathway between 124 Street and 125 Street along the south side of the park making it easier for people who walk to move around the park.
- + Upgrades to the existing diagonal pathway which connects the southeast and northwest corners of the park.
-  + Waste receptacles, benches, and pedestrian-oriented lighting will be installed along the pathways to enhance user comfort and safety.
- + Trees and shrubs will be trimmed by the City through regular maintenance to maintain visibility and promote safety.

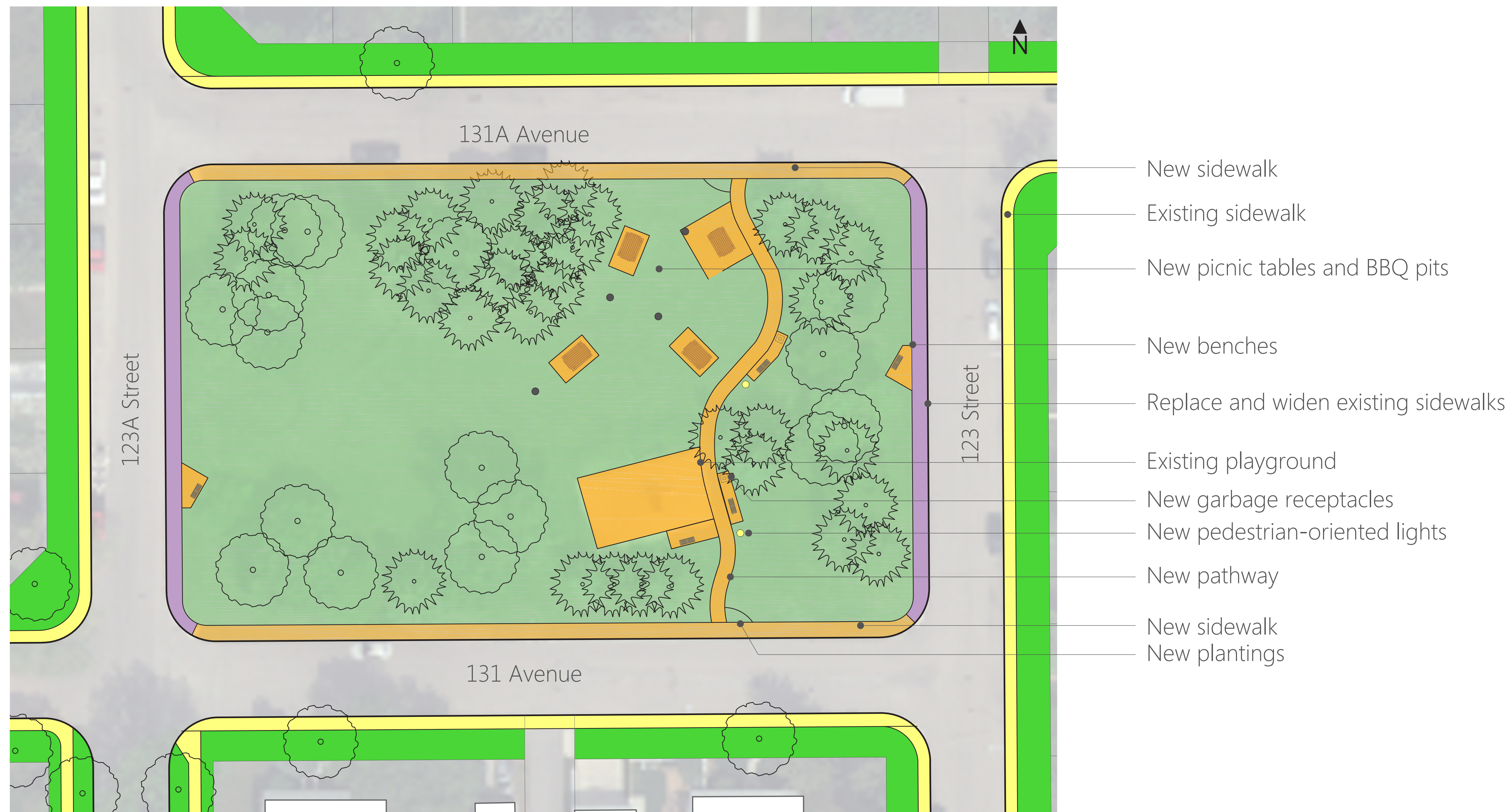
**SHARE YOUR VOICE**  
**SHAPE OUR CITY**

**Edmonton**

**ADVISE**



# 2 Chalmers Park upgrades



- New sidewalk/pathway
- Widen existing sidewalk
- Existing sidewalk

## What we propose

- + Add new sidewalks on the north and south sides of the park and a new north-south pathway through the park to make it easier for people who walk to move around the park.
- + Add new picnic tables and BBQ pits to provide residents with a new picnic area.\*
- + Waste receptacles, benches and pedestrian-oriented lighting will be installed along the pathways to enhance user comfort and safety.
- + Trees and shrubs will be trimmed by the City through regular maintenance to maintain visibility and promote safety.

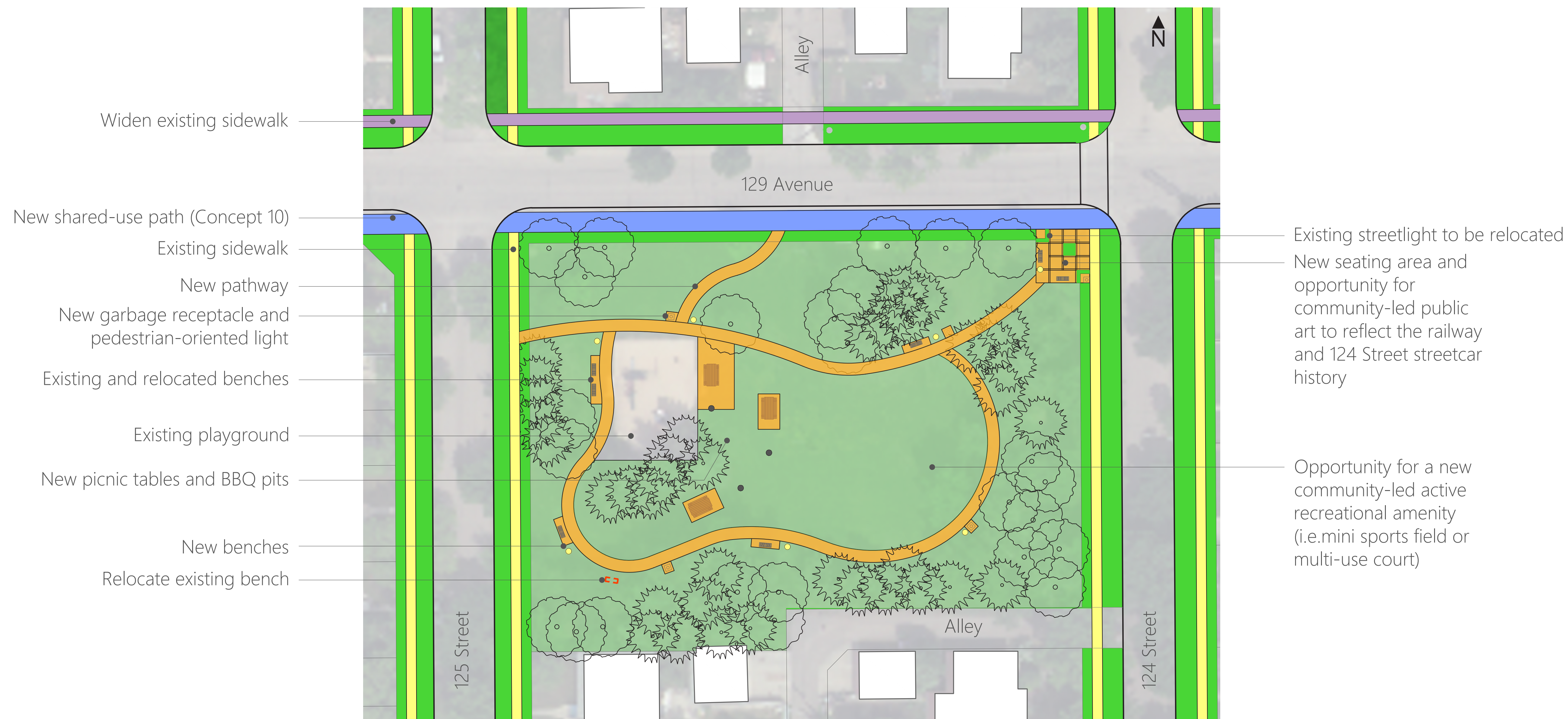
\*Subject to further investigation

**SHARE YOUR VOICE**  
**SHAPE OUR CITY**

**Edmonton**

**ADVISE**

# 3 Touchdown Park upgrades



- New pathway
- Widen existing sidewalk
- Existing sidewalk
- New shared-use path

## What we propose

- + New pathways in the park to make it easier for people who walk to move around the park.
  - + Add new picnic tables and BBQ pits to provide residents with a new picnic space.\*
  - + Add a new seating area with the opportunity for community-led public art to reflect the railway and 124 Street streetcar history.
  - + Waste receptacles, benches, and pedestrian-oriented lighting will be installed along the pathways to enhance user comfort and safety.
  - + Trees and shrubs will be trimmed by the City through regular maintenance to maintain visibility and promote safety.
- \*Subject to further investigation

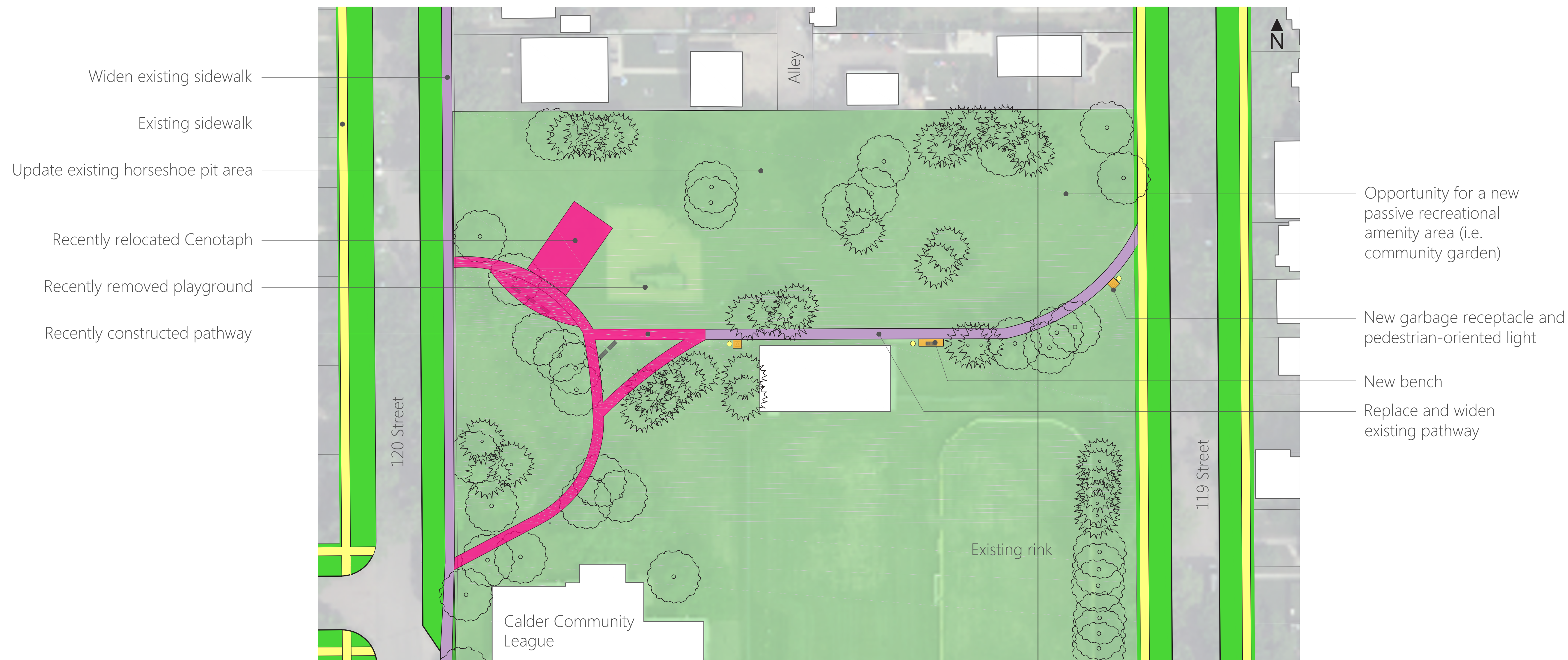
**SHARE YOUR VOICE  
SHAPE OUR CITY**

**Edmonton**

**ADVISE**







# 4 Calder Memorial Park upgrades



- Widen existing pathway
- Existing sidewalk
- Recently built pathway as part of the Cenotaph project

## What we propose

-  + Replace and widen the existing pathway through the park to make it easier for people who walk to move around the park.
-  + Upgrade the existing horseshoe pits to provide residents with a renewed amenity.
-  + Waste receptacles, a bench, and pedestrian-oriented lighting will be installed along the pathway to enhance user comfort and safety.
-  + Trees and shrubs will be trimmed by the City through regular maintenance to maintain visibility and promote safety.



**SHARE YOUR VOICE  
SHAPE OUR CITY**





# 5 Keyano Park upgrades



- New pathway
- Widen existing sidewalk/pathway
- Existing sidewalk/pathway

## What we propose

-  + Replace and widen the existing pathway through the park to make it easier for people who walk to move around the park.
  -  + Add a new pathway to the existing playground to improve accessibility for people who walk and parents with strollers.
  -  + Add new picnic tables and BBQ pits to provide residents with a new picnic area.\*
  -  + Add a new seniors focused seating area with an opportunity for community-led public art.
  -  + Waste receptacles, a bench and pedestrian-oriented lighting will be installed along the pathway to enhance user comfort and safety.
  -  + Trees and shrubs will be trimmed by the City through regular maintenance to maintain visibility and promote safety.
- \*Subject to further investigation

**SHARE YOUR VOICE  
SHAPE OUR CITY**

**Edmonton**

**ADVISE**