

EXPLORING OPPORTUNITIES TO SHAPE YOUR NEIGHBOURHOOD

We invite you to help adapt and adjust our knowledge of your neighbourhood. Tell us what is working, what challenges you experience in the neighbourhood and help us identify opportunities for the future.

OUTCOME:

A list of opportunities and challenges that summarize:

- + how people move in your neighbourhood
- + where people access services and recreation
- + how people feel about safety, neighbourliness and sense of community
- + what is unique about your neighbourhood

Our Commitment:

We commit to using your input in deciding on key elements to be explored in the development of the overall neighbourhood design to align with the co-created Vision for your neighbourhood renewal.

REFINE

BUILDING GREAT
NEIGHBOURHOODS
AND OPEN SPACES

Edmonton

HOW WE EXPLORE OPPORTUNITIES

While we are in your neighbourhood, we identify areas on City-owned land and look for opportunities to enhance the neighbourhood in coordination with the neighbourhood renewal project. Through a variety of public engagement techniques we will explore topics such as traffic, connectivity, open/park spaces, and placemaking (creating public spaces that promote health, happiness, and well being). We invite you to explore with us to discuss opportunities for the future of your neighbourhood.

We look for character areas, design aesthetics, and enhanced walking and biking connections. We also explore opportunities such as public art, wayfinding, improvements to commercial areas, parks, open spaces, and traffic.

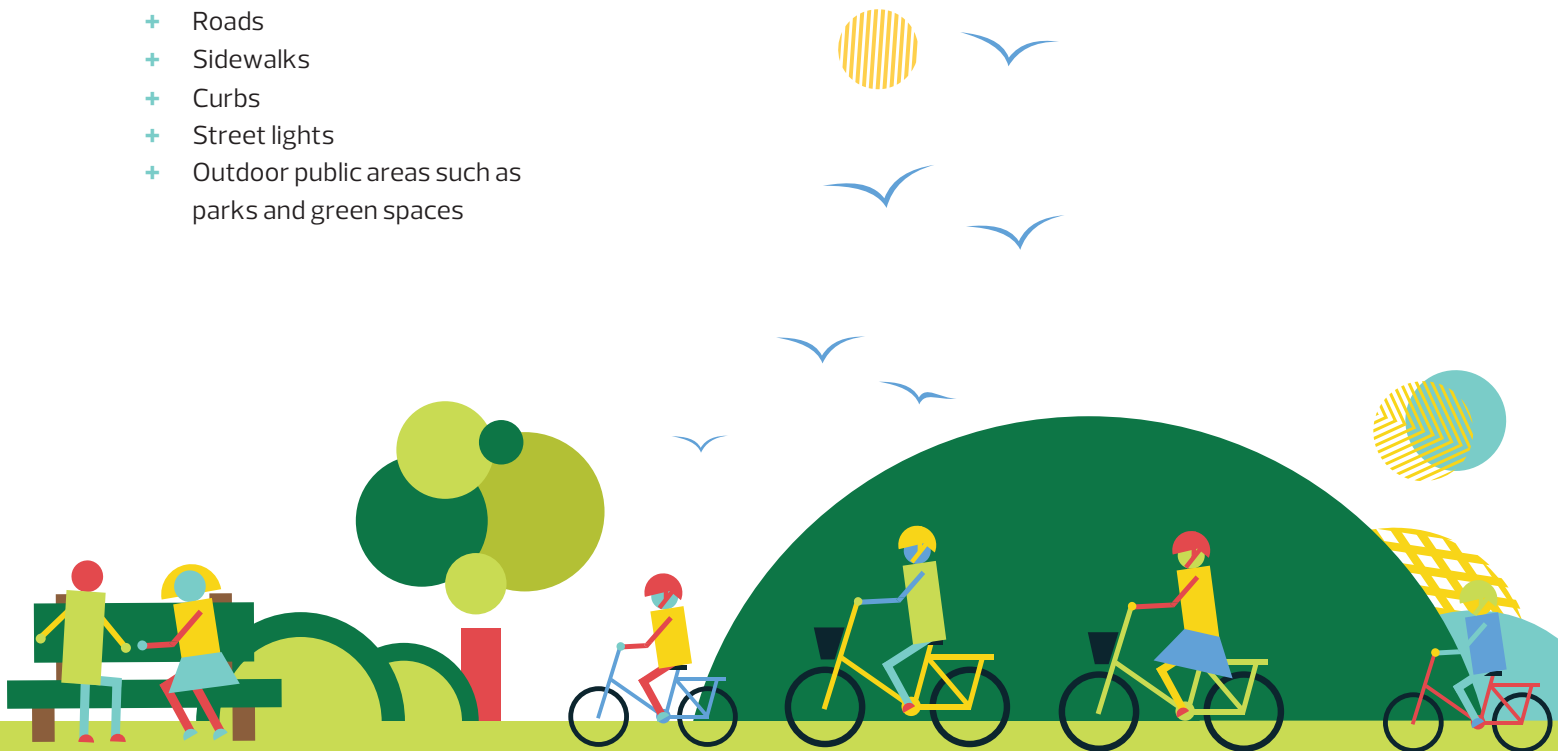
Urban Design Analysis

Urban Design Analysis (UDA) is the process of reviewing the existing urban environment: how it works, how pedestrian traffic flows, and what it looks like. The purpose is to identify what's missing, opportunities for improvement and the possible costs and benefits.

WHAT WE ARE EXPLORING

Some of the elements of a neighbourhood renewal project include:

- + Roads
- + Sidewalks
- + Curbs
- + Street lights
- + Outdoor public areas such as parks and green spaces



WE WILL ASK YOU TO TELL US ABOUT

- + Walking, biking or driving in your neighbourhood
- + Parks and gathering spaces in your neighbourhood
- + Things you like about your neighbourhood
- + Areas that could be improved

HOW WE USE YOUR LOCAL KNOWLEDGE

What you tell us about your experience living in your neighbourhood is combined with a professional analysis of the infrastructure, travel destinations and current planning guidelines. Together this information is used to develop an Urban Design Analysis for the neighbourhood.

The City will use various methods to invite you to participate.

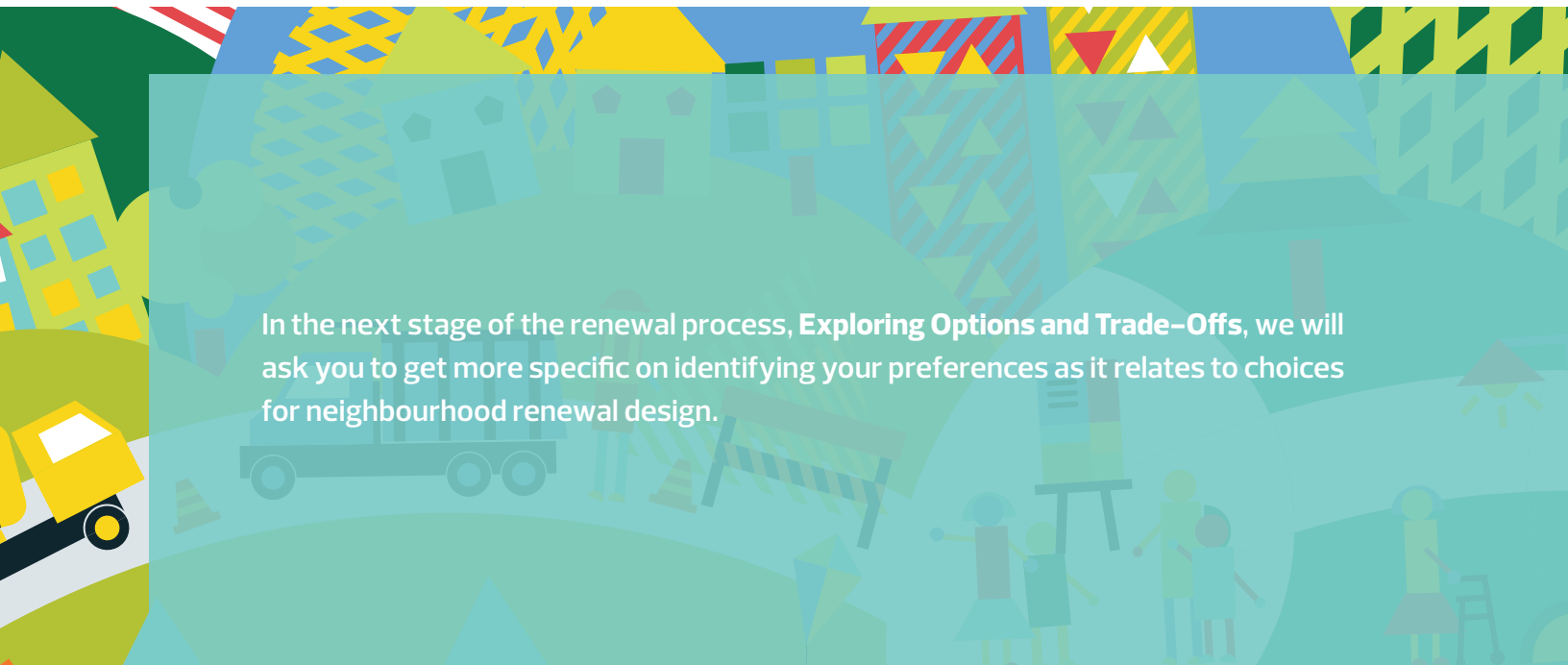
- + Coordinated community walks
- + Door to door surveys
- + Drop-in sessions
- + Facilitated workshops
- + Online surveys

The information you share with us will be used to identify:

- + Favourite neighbourhood features
- + Areas of concern
- + Opportunities for future improvements



Notes:



In the next stage of the renewal process, **Exploring Options and Trade-Offs**, we will ask you to get more specific on identifying your preferences as it relates to choices for neighbourhood renewal design.