

**LEGEND:**

- PROPOSED ROAD ROW
- PROPOSED LRT ROW
- LRT TRACK CENTERLINE
- STATION PLATFORM
- TIE & BALLAST TRACK
- EMBEDDED TRACK
- MULTI-USE TRAIL
- BOREHOLE

FOR DETAILS OF ELLERSLIE ROAD REFER TO PLAN FIG-07-R-PE-106 (SOUTH LRT EXTENSION: CENTURY PARK TO ELLERSLIE ROAD - PRELIMINARY ENGINEERING)

**NOTE:**  
PEDESTRIAN CROSSING ALTERNATIVES TO BE ASSESSED AT PRELIMINARY ENGINEERING STAGE

**CAUTION:**  
PIPELINE CROSSING. CROSSING PERMITS REQUIRED.

**NOTES:**  
FOR PROFILE DETAILS SEE FIGURE 6.  
FOR CROSS SECTION DETAILS SEE FIGURE 9

no.	description	date	checked
revisions			

X	no.	description	date	appd
		XXXXXXXX	XXXX	XXX
		issue data		

scale  
Horizontal - 1:1000

drawn by: Y WANG  
sub-consultant no.: 00

checked by: L NENT  
date: 5-DEC-10

permit  
PERMIT TO PRACTICE  
STANTEC CONSULTING LTD.  
Signature: \_\_\_\_\_  
Date: \_\_\_\_\_  
PERMIT NUMBER: P0258  
The Association of Professional Engineers, Geologists and Geophysicists of Alberta

prime consultant job no: 00

seal  
PROFESSIONAL ENGINEER ALBERTA  
G. MENZIES  
MAR 7 2011

**AECOM** Prime Consultant  
**Starbuck** Associate Consultants  
**ISL** Associate Consultants  
**Edmonton** CAPITAL CONSTRUCTION  
LRT EXPANSION BRANCH

**CONCEPT ENGINEERING DRAWINGS NOT FOR CONSTRUCTION**

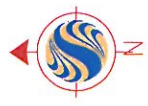
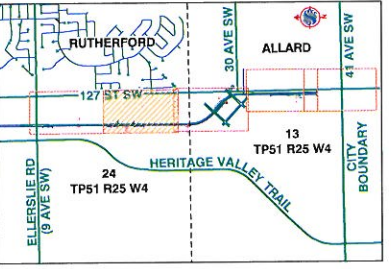
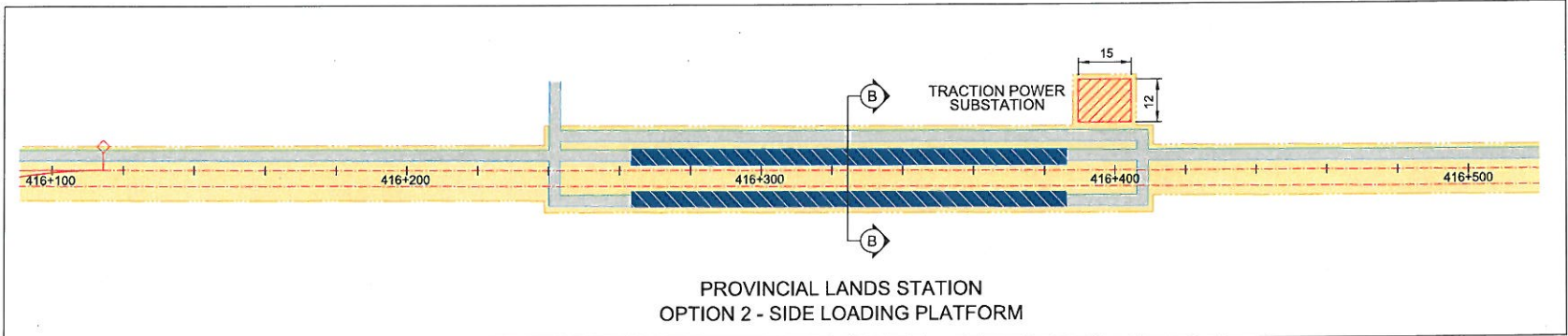
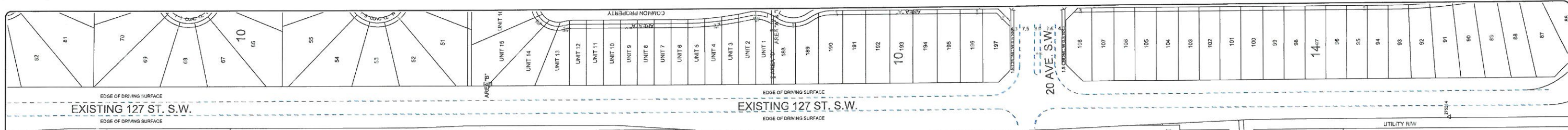
drawing title  
**CONCEPT PLAN**  
ELLERSLIE STATION TO 15 AVE S.W.  
**PLAN VIEW**

**SOUTH LRT EXTENSION**  
Edmonton South LRT

ELLERSLIE ROAD TO 41 AVENUE S.W. EDMONTON, AB

drawing no. **FIGURE 1** REV 0 SHT

FOR CONTINUATION SEE FIGURE 2



**LEGEND:**

- PROPOSED ROAD ROW
- PROPOSED LRT ROW
- LRT TRACK CENTERLINE
- STATION PLATFORM
- TIE & BALLAST TRACK
- EMBEDDED TRACK
- MULTI-USE TRAIL
- BOREHOLE

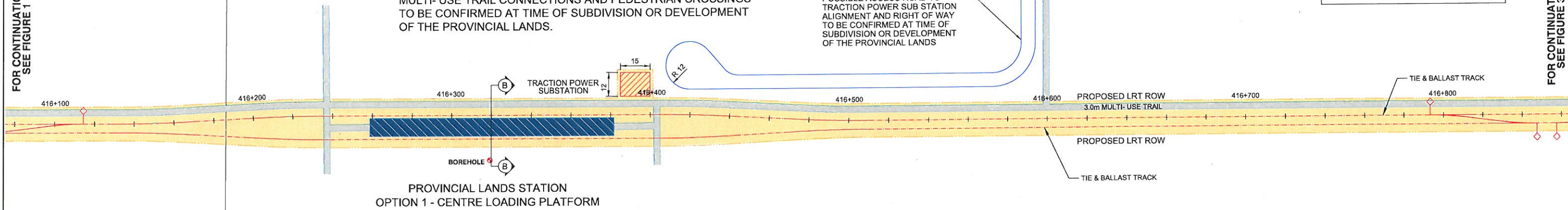
SE 24-51-25-4  
HER MAJESTY THE QUEEN  
IN RIGHT OF ALBERTA

**NOTES:**  
MULTI-USE TRAIL CONNECTIONS AND PEDESTRIAN CROSSINGS  
TO BE CONFIRMED AT TIME OF SUBDIVISION OR DEVELOPMENT  
OF THE PROVINCIAL LANDS.

POSSIBLE ACCESS ROAD TO  
TRACTION POWER SUB STATION  
ALIGNMENT AND RIGHT OF WAY  
TO BE CONFIRMED AT TIME OF  
SUBDIVISION OR DEVELOPMENT  
OF THE PROVINCIAL LANDS

FOR CONTINUATION  
SEE FIGURE 1

FOR CONTINUATION  
SEE FIGURE 3



**NOTES:**  
FOR PROFILE DETAILS SEE FIGURE 6 & FIGURE 7  
FOR CROSS SECTION DETAILS SEE FIGURE 9

no.	description	date	checked

X	XXXXXXXX	XXXX	XXX
no.	description	date	appd

scale	Horizontal - 1:1000
drawn by	Y WANG
sub-consultant no.	00
checked by	L NENT
date	5-DEC-10

permit	PERMIT TO PRACTICE STANTEC CONSULTING LTD.
Signature	
Date	
PERMIT NUMBER:	P0258
The Association of Professional Engineers, Geologists and Geophysicists of Alberta	
prime consultant job no.	00



**AECOM** Prime Consultant

**ISL Engineering** Associate Consultants

**Starstec** Associate Consultants

**THE CITY OF EDMONTON** CAPITAL CONSTRUCTION  
LRT EXPANSION BRANCH

**CONCEPT ENGINEERING  
DRAWINGS  
NOT FOR CONSTRUCTION**

drawing title

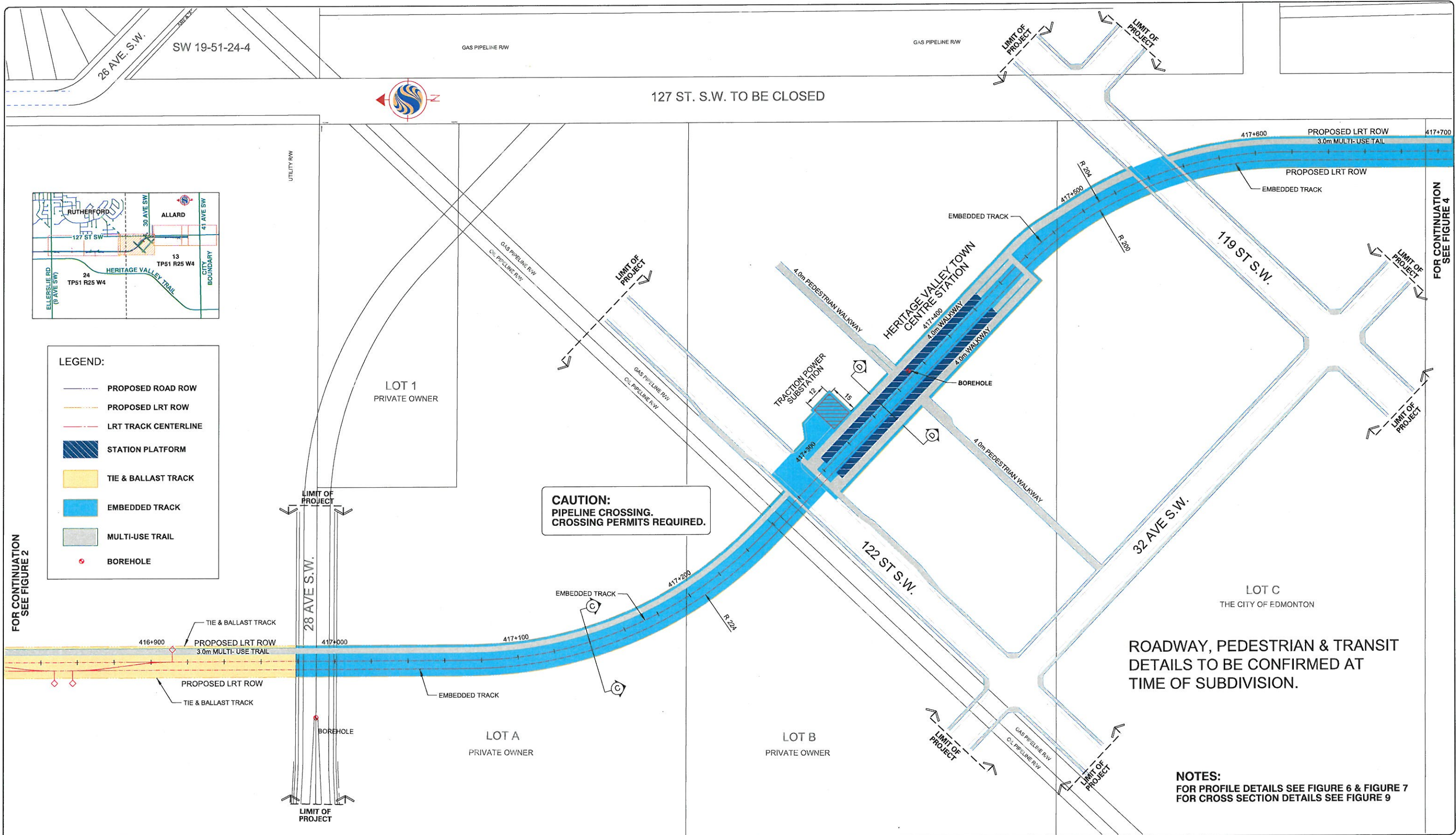
**CONCEPT PLAN**  
15 AVE S.W. TO S. OF 20 AVE S.W.  
PLAN VIEW

**SOUTH LRT  
EXTENSION**

ELLERSLIE ROAD TO  
41 AVENUE S.W.  
EDMONTON, AB

drawing no. **FIGURE 2**

REV 0  
SHT



- LEGEND:**
- PROPOSED ROAD ROW
  - PROPOSED LRT ROW
  - LRT TRACK CENTERLINE
  - ▨ STATION PLATFORM
  - TIE & BALLAST TRACK
  - EMBEDDED TRACK
  - MULTI-USE TRAIL
  - BOREHOLE

**CAUTION:**  
PIPELINE CROSSING.  
CROSSING PERMITS REQUIRED.

ROADWAY, PEDESTRIAN & TRANSIT  
DETAILS TO BE CONFIRMED AT  
TIME OF SUBDIVISION.

**NOTES:**  
FOR PROFILE DETAILS SEE FIGURE 6 & FIGURE 7  
FOR CROSS SECTION DETAILS SEE FIGURE 9

no.	description	date	checked

X	XXXXXXXX	XXXX	XXX
no.	description	date	appd

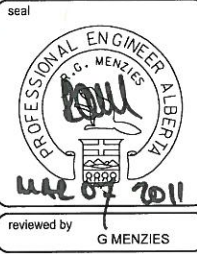
scale  
Horizontal - 1:1000

drawn by: Y WANG  
sub-consultant no.: 00

checked by: L NENT  
date: 5-DEC-10

permit  
PERMIT TO PRACTICE  
STANTEC CONSULTING LTD.  
Signature: \_\_\_\_\_  
Date: \_\_\_\_\_  
PERMIT NUMBER: P0258  
The Association of Professional Engineers,  
Geologists and Geophysicists of Alberta

prime consultant job no.: 00



**AECOM** Prime Consultant

**ISL** Associate Consultants

**Edmonton** CAPITAL CONSTRUCTION  
LRT EXPANSION BRANCH

**CONCEPT ENGINEERING  
DRAWINGS  
NOT FOR CONSTRUCTION**

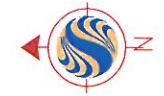
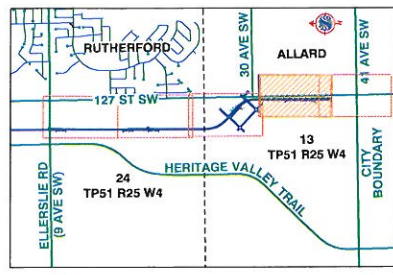
drawing title  
**CONCEPT PLAN  
28 AVE S.W. TO S. OF 32 AVE S.W.  
PLAN VIEW**

**SOUTH LRT  
EXTENSION**

ELLERSLIE ROAD TO  
41 AVENUE S.W.  
EDMONTON, AB

drawing no. **FIGURE 3**

REV 0  
SHT



FRAC NW 18-51-24-4  
PRIVATE OWNER

ALLARD NEIGHBORHOOD  
3  
PRIVATE OWNER

FUTURE COLLECTOR  
LIMIT OF PROJECT

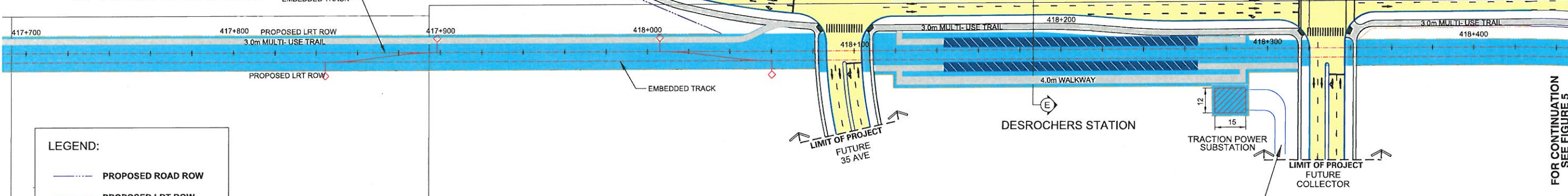
127 ST. S.W. TO BE CLOSED

FOR CONTINUATION  
SEE FIGURE 3

FOR CONTINUATION  
SEE FIGURE 5

**LEGEND:**

- PROPOSED ROAD ROW
- PROPOSED LRT ROW
- LRT TRACK CENTERLINE
- STATION PLATFORM
- TIE & BALLAST TRACK
- EMBEDDED TRACK
- MULTI-USE TRAIL
- BOREHOLE



DESROCHERS NEIGHBORHOOD

ACCESS TO TPSS TO BE REVIEWED  
AT TIME OF DEVELOPMENT.

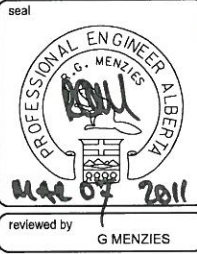
**NOTES:**  
FOR PROFILE DETAILS SEE FIGURE 7 & FIGURE 8  
FOR CROSS SECTION DETAILS SEE FIGURE 10

no.	description	date	checked
revisions			

no.	description	date	appd
X	XXXXXXXX	XXXX	XXX
issue data			

scale	Horizontal - 1:1000
drawn by	Y WANG
sub-consultant no.	00
checked by	L NENT
date	5-DEC-10

permit  
PERMIT TO PRACTICE  
STANTEC CONSULTING LTD.  
Signature \_\_\_\_\_  
Date \_\_\_\_\_  
PERMIT NUMBER: P0258  
The Association of Professional Engineers,  
Geologists and Geophysicists of Alberta



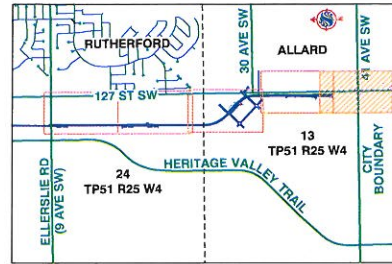
**AECOM** Prime Consultant  
**ISL** Associate Consultants  
**Edmonton** CAPITAL CONSTRUCTION  
LRT EXPANSION BRANCH

**CONCEPT ENGINEERING  
DRAWINGS  
NOT FOR CONSTRUCTION**

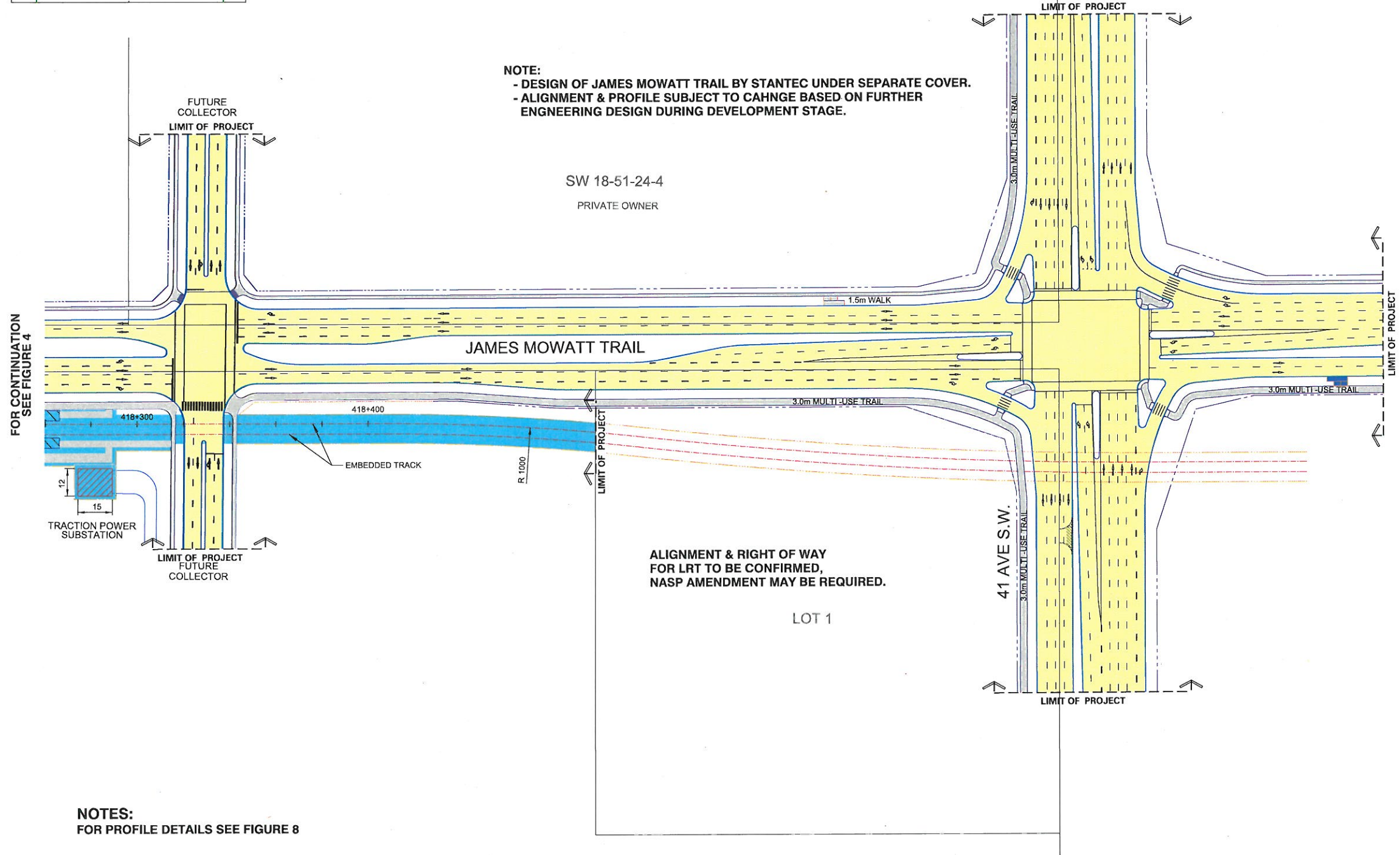
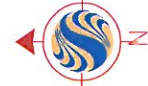
drawing title  
**CONCEPT PLAN  
32 AVE S.W. TO DESROCHERS STATION  
PLAN VIEW**

**SOUTH LRT  
EXTENSION**  
Edmonton  
ELLERSLIE ROAD TO  
41 AVENUE S.W.  
EDMONTON, AB

drawing no. **FIGURE 4** REV 0  
SHT



**NOTE:**  
 - DESIGN OF JAMES MOWATT TRAIL BY STANTEC UNDER SEPARATE COVER.  
 - ALIGNMENT & PROFILE SUBJECT TO CHANGE BASED ON FURTHER ENGINEERING DESIGN DURING DEVELOPMENT STAGE.



**LEGEND:**

- PROPOSED ROAD ROW
- PROPOSED LRT ROW
- LRT TRACK CENTERLINE
- STATION PLATFORM
- TIE & BALLAST TRACK
- EMBEDDED TRACK
- MULTI-USE TRAIL
- BOREHOLE

**NOTES:**  
 FOR PROFILE DETAILS SEE FIGURE 8

no.	description	date	checked

no.	description	date	appd
X	XXXXXXXX	XXXX	XXX

scale  
Horizontal - 1:1000

drawn by Y WANG

sub-consultant no. 00

checked by L NENT

date 5-DEC-10

permit  
PERMIT TO PRACTICE  
STANTEC CONSULTING LTD.

Signature \_\_\_\_\_

Date \_\_\_\_\_

PERMIT NUMBER: P0258  
The Association of Professional Engineers,  
Geologists and Geophysicists of Alberta

prime consultant job no. 00

seal  
PROFESSIONAL ENGINEER ALBERTA  
P. G. MENZIES  
4/20/2011

**AECOM** Prime Consultant

**ISL** Associate Consultants

**Edmonton** CAPITAL CONSTRUCTION  
LRT EXPANSION BRANCH

**CONCEPT ENGINEERING DRAWINGS NOT FOR CONSTRUCTION**

drawing title  
**CONCEPT PLAN**  
DESROCHERS STATION TO 41 AVE. S.W.  
PLAN VIEW

**SOUTH LRT EXTENSION**

ELLERSLIE ROAD TO 41 AVENUE S.W.  
EDMONTON, AB

drawing no. **FIGURE 5**

REV 0  
SHT