



# Downtown LRT Connector Concept Plan

[www.edmonton.ca/LRTProjects](http://www.edmonton.ca/LRTProjects)

**Transportation & Public Works Committee**  
**May 25, 2011**



# Downtown LRT Connector Concept Plan

[www.edmonton.ca/LRTProjects](http://www.edmonton.ca/LRTProjects)

## Edmonton LRT Network

**Brian Latte**

**Branch Manager**

**Transportation Planning**

# Public Transportation - Strategic Objective 5.1

[www.edmonton.ca/LRTProjects](http://www.edmonton.ca/LRTProjects)

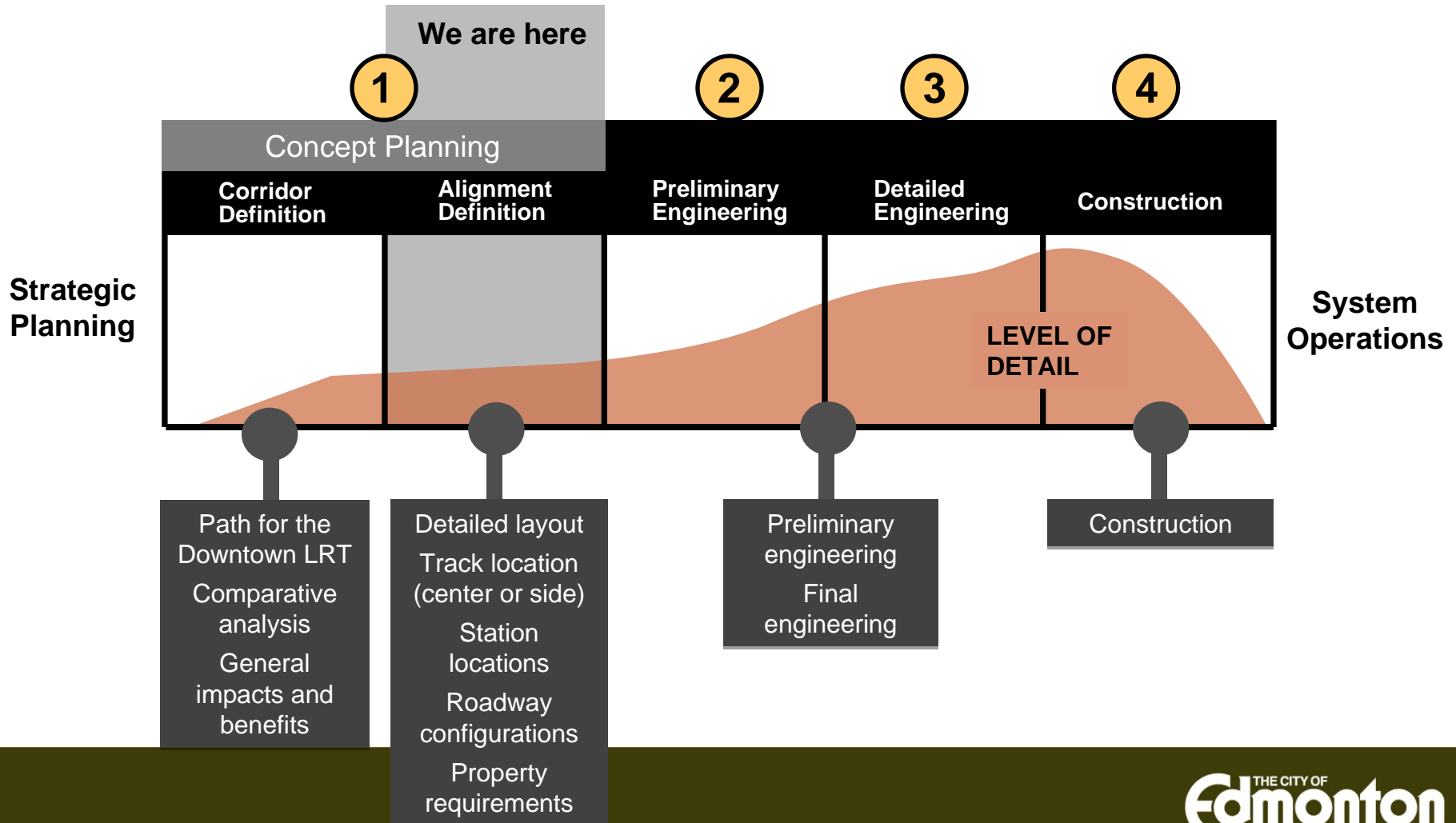
*“The City will pursue expansion of the LRT to all sectors of the city with a goal to increase transit ridership and transit mode split, and spur the development of compact, urban communities.”*

- Transportation Master Plan



# LRT Planning

[www.edmonton.ca/LRTProjects](http://www.edmonton.ca/LRTProjects)

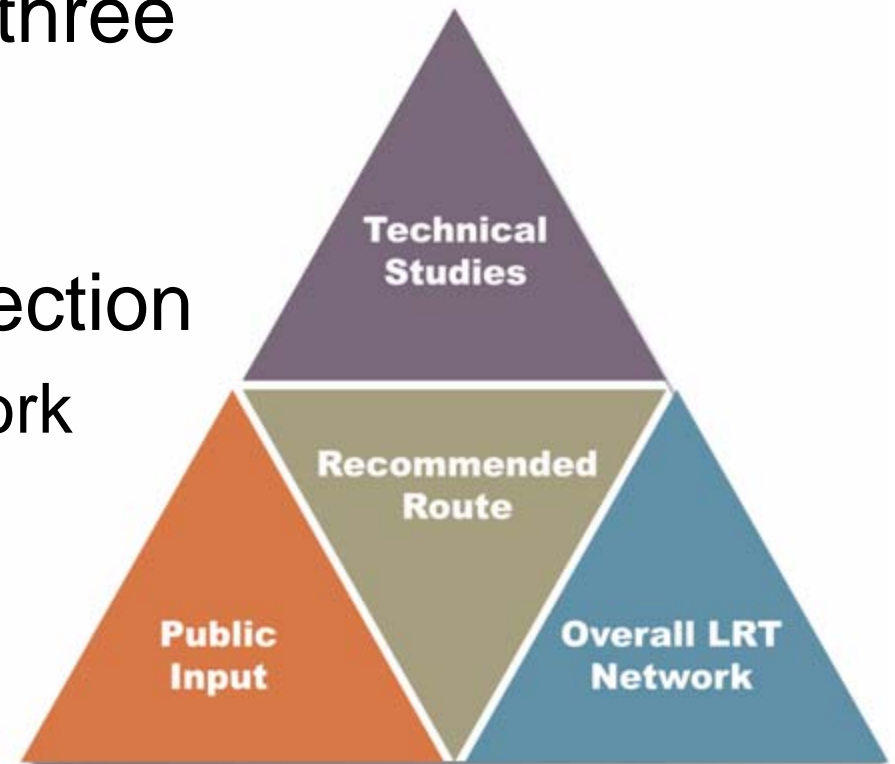


	Concept Planning		Preliminary Engineering	Detailed Engineering	Construction Complete & Opened
	Corridor Definition	Alignment Definition			
<b>South LRT</b> (Health Sciences to Century Park)	✓	✓	✓	✓	✓
<b>North LRT</b> (Downtown to NAIT)	✓	✓	✓	End 2010	End 2014
<b>South LRT</b> (Century Park to Ellerslie Road)	✓	✓	✓		
<b>Northeast LRT</b> (Clarview to Gorman)	✓	✓	✓		
<b>Southeast LRT</b> (Downtown to Mill Woods)	✓	✓	Fall 2012		
<b>West LRT</b> (Downtown to Lewis Estates)	✓	✓	Fall 2012		
<b>Downtown LRT</b>	✓	Spring 2011	Fall 2012		
<b>Northwest LRT</b> (NAIT to Northwest Edmonton)	✓	2012			
<b>Central Area Circulator</b>	TBD	TBD			
<b>East LRT</b> (Downtown to Sherwood Park)	TBD	TBD			

# Evaluation & Concept Details

[www.edmonton.ca/LRTProjects](http://www.edmonton.ca/LRTProjects)

- Critical components - three components impacted decisions about the Downtown LRT Connection
  - The overall LRT Network Plan
  - Technical Analysis
  - Public Input



A white silhouette of a city skyline is set against a dark olive green background at the top of the slide. The skyline includes several rectangular buildings of varying heights and a central pyramid-shaped structure with a grid pattern.

# Concept Plan

[www.edmonton.ca/LRTPProjects](http://www.edmonton.ca/LRTPProjects)

- Next step after Corridor approval
- Defines major infrastructure requirements, including:
  - LRT Alignment within corridor (center or side running)
  - Station Locations
  - Neighbourhood, business and pedestrian access
  - Further refinement of cost estimates





# Capital City Downtown Plan

[www.edmonton.ca/LRTPProjects](http://www.edmonton.ca/LRTPProjects)



- Integrates new and emerging City policy
- Guides development of the downtown
  - Vibrant
  - Attractive
  - Higher-density
  - Mixed-use
  - Walkable
- Supports the integration of at-grade LRT as a catalyst for mixed-used



# Urban-Style Low-Floor LRT

[www.edmonton.ca/LRTProjects](http://www.edmonton.ca/LRTProjects)



- Operates on the surface
- Electrically powered from overhead lines.
- Low-floor vehicles
- Low-level platforms
- Integrated LRT stops in the Downtown streetscape
- Integrated facilities for pedestrians & bikes
- Urban design, redevelopment opportunities
- Encourage higher density & mixed use

# Urban-Style Low-Floor LRT

[www.edmonton.ca/LRTProjects](http://www.edmonton.ca/LRTProjects)



# Urban-Style Low-Floor LRT

[www.edmonton.ca/LRTProjects](http://www.edmonton.ca/LRTProjects)





# Downtown LRT Connector Concept Plan

[www.edmonton.ca/LRTProjects](http://www.edmonton.ca/LRTProjects)

**Adam Laughlin**  
Director Facility Planning  
Transportation Planning



**Downtown LRT Connector  
Concept Plan**

[www.edmonton.ca/LRTProjects](http://www.edmonton.ca/LRTProjects)

# **Public Involvement**

# Public Outreach to Date

[www.edmonton.ca/LRTProjects](http://www.edmonton.ca/LRTProjects)

## DOWNTOWN LRT CONCEPT PLAN

DOWNTOWN  
LRT  
CORRIDOR  
APPROVED  
*Jun. 21, 2010*

CONCEPT  
OPTIONS  
REVIEWED  
*Sept.-Oct. 2010*

FEEDBACK ON  
DRAFT  
CONCEPT  
PLAN  
*Nov. 2, 2010*

NON-  
STATUTORY  
PUBLIC  
HEARING  
*Dec. 8, 2010*

REFINEMENT  
OF  
CONCEPT  
PLAN  
*Jan.-Apr. 2011*

TPW  
CITY  
COUNCIL  
REVIEW  
*May-Jun. 2011*

OPEN HOUSE

INFO SESSION

COUNCIL

# Public Involvement Process

[www.edmonton.ca/LRTProjects](http://www.edmonton.ca/LRTProjects)

- 40 Events with over 500 participants
- Focused stakeholder discussions to get input on alignment options, station locations, and access management
- 2 Public Info Sessions
- Additional meetings held with:
  - community leagues
  - major institutions
  - property owners
  - business owners



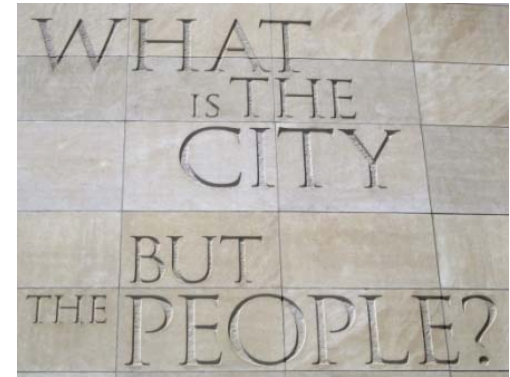


# Feedback

[www.edmonton.ca/LRTProjects](http://www.edmonton.ca/LRTProjects)

- LRT is a benefit - Downtown should be a focal point
- Competing theme:
  - Desire for transit and pedestrian/cyclist focused environment vs. preserving vehicle access
- Safety and security – enhance at LRT stops and in adjacent areas
- Chinese/Boyle/Riverdale community concerned with approved corridor and portal location
- Access & circulation concerns
- Architectural features

***Address public concerns with design process...***





# Downtown LRT Connector Concept Plan

[www.edmonton.ca/LRTProjects](http://www.edmonton.ca/LRTProjects)

## Concept Plan

# West LRT Downtown Connection Southeast LRT



# Benefits & Trade Offs

[www.edmonton.ca/LRTProjects](http://www.edmonton.ca/LRTProjects)

- Benefits and impacts exist
- Potential positive transportation and land use effects:
  - Creating improved mobility options
  - Encouraging density and redevelopment
  - Creating active streets
  - Supporting pedestrian/bike connections and network
  - Implementing the vision of Capital City Downtown Plan





# Changes Since Nov. 2010

[www.edmonton.ca/LRTProjects](http://www.edmonton.ca/LRTProjects)

- Campus Stop has been moved to 107 Street (between 104 & 103 Avenue)
- LRT vehicle parking lane provided on 107 Street (between 102 & Jasper Avenue)
- Dedicated two way cycle lane provided on 102 Avenue (between 107 & 99 Street)
- Continuous eastbound traffic lane provided on 102 Avenue (between 107 & 95 Street)
- On street parking provided on 102 Avenue
- Parking loading provided between 96 & 95 Street
- Pedestrian crossing provided west of 95 Street on 102 Avenue

# 107 Street Stop

[www.edmonton.ca/LRTProjects](http://www.edmonton.ca/LRTProjects)

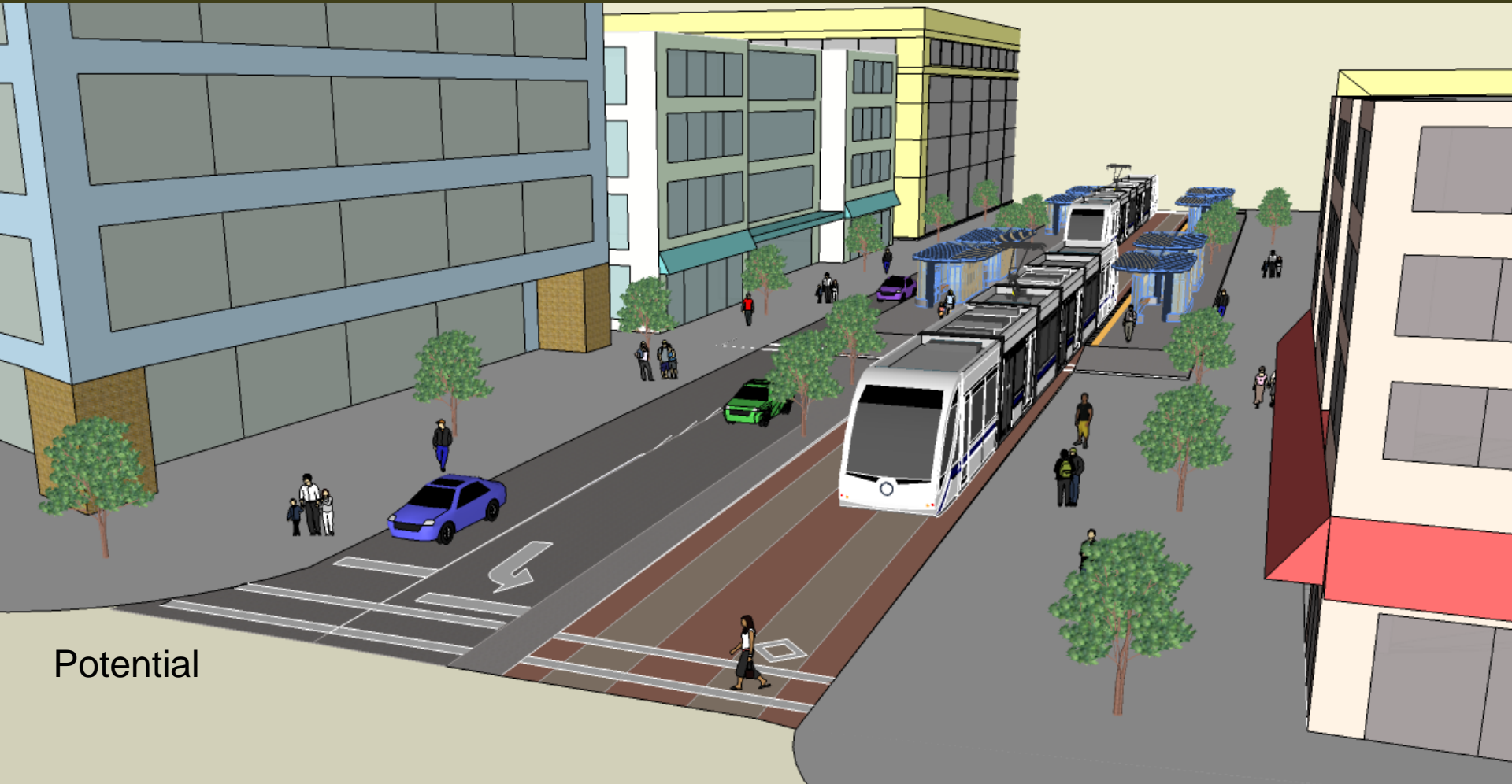


Edmonton LRT EXPANSION  
107 Street Stop

- |                      |                   |
|----------------------|-------------------|
| LRT at Grade         | Roadworks         |
| Underground LRT      | Cycle facilities  |
| LRT stop platform    | Sidewalk          |
| Property Requirement | On-street parking |

# 107 Street Stop

Looking south on 107 Street, from 104 Avenue



Potential

# 107/106 Street

[www.edmonton.ca/LRTProjects](http://www.edmonton.ca/LRTProjects)



**Edmonton LRT EXPANSION**  
102 Avenue at 107 Street



# 105/106 Street Stop

[www.edmonton.ca/LRTPProjects](http://www.edmonton.ca/LRTPProjects)

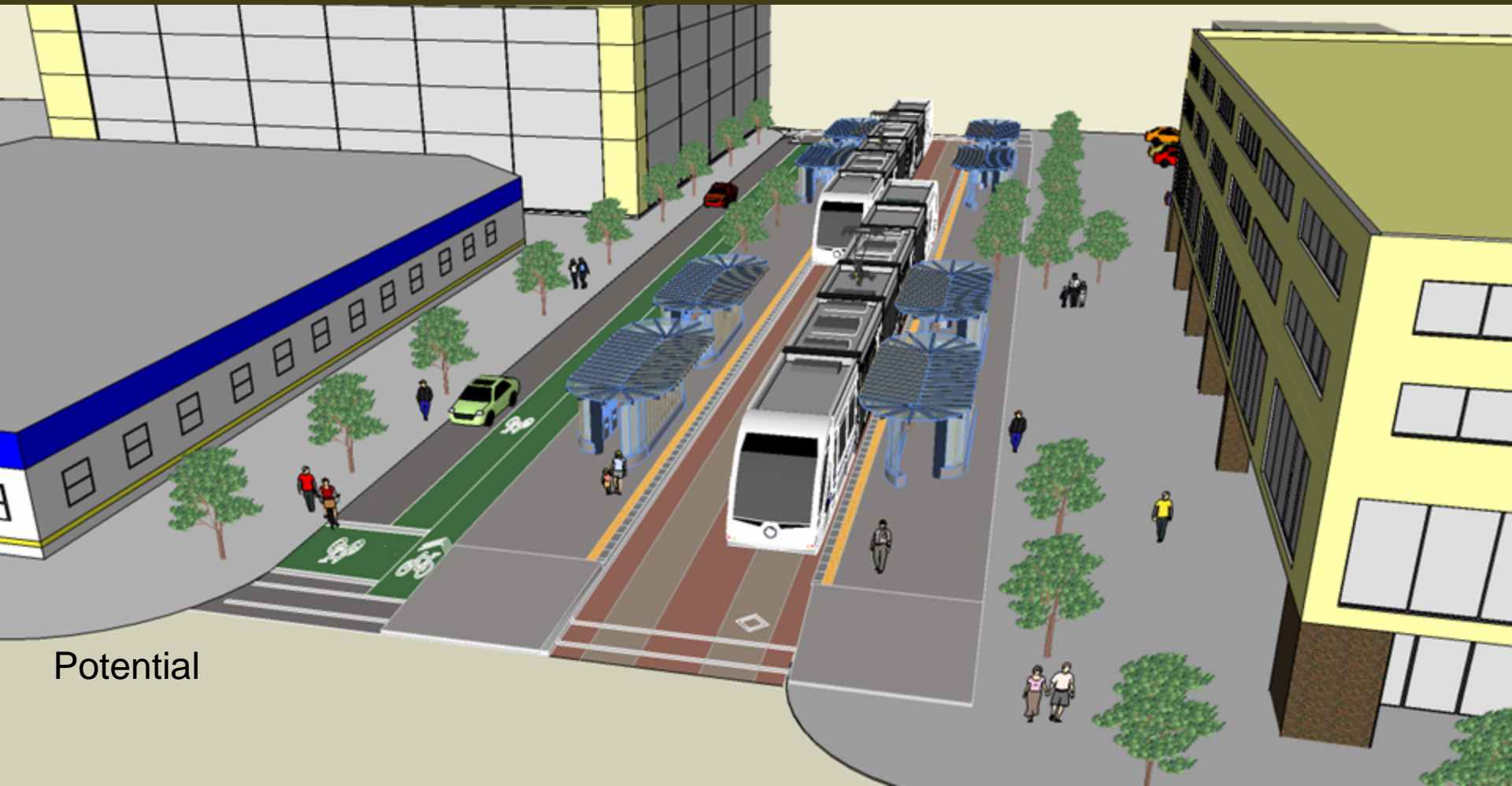


**Edmonton LRT EXPANSION**  
105/106 Stop Location

- |  |   |
|--|---|
|  LRT at Grade         |  Sidewalk          |
|  Underground LRT      |  Cycle facilities  |
|  LRT stop platform    |  On-street parking |
|  Property Requirement |   |

# 105/106 Street Stop

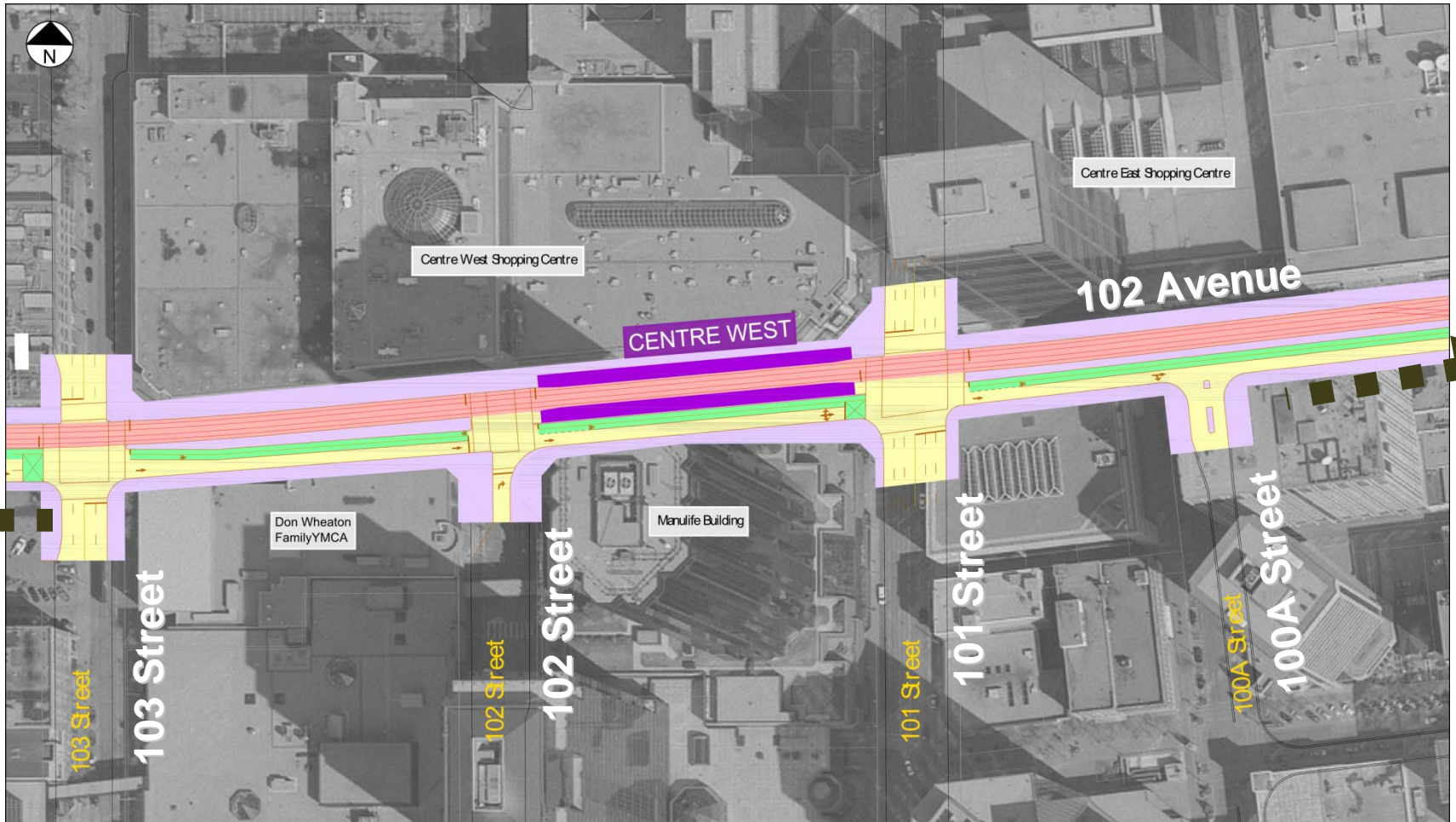
Looking west on 102 Avenue between 105 Street & 106 Street



Potential

# Centre West Stop

[www.edmonton.ca/LRTProjects](http://www.edmonton.ca/LRTProjects)



**Edmonton LRT EXPANSION**  
Centre West Stop Location

- |  |  |
|--|--|
|  LRT at Grade         |  Roadworks         |
|  Underground LRT      |  Cycle facilities  |
|  LRT stop platform    |  Sidewalk          |
|  Property Requirement |  On-street parking |

# Centre West Stop

Looking West on 102 Avenue between 101 Street & 102 Street



Potential

# Churchill Square Stop

[www.edmonton.ca/LRTProjects](http://www.edmonton.ca/LRTProjects)

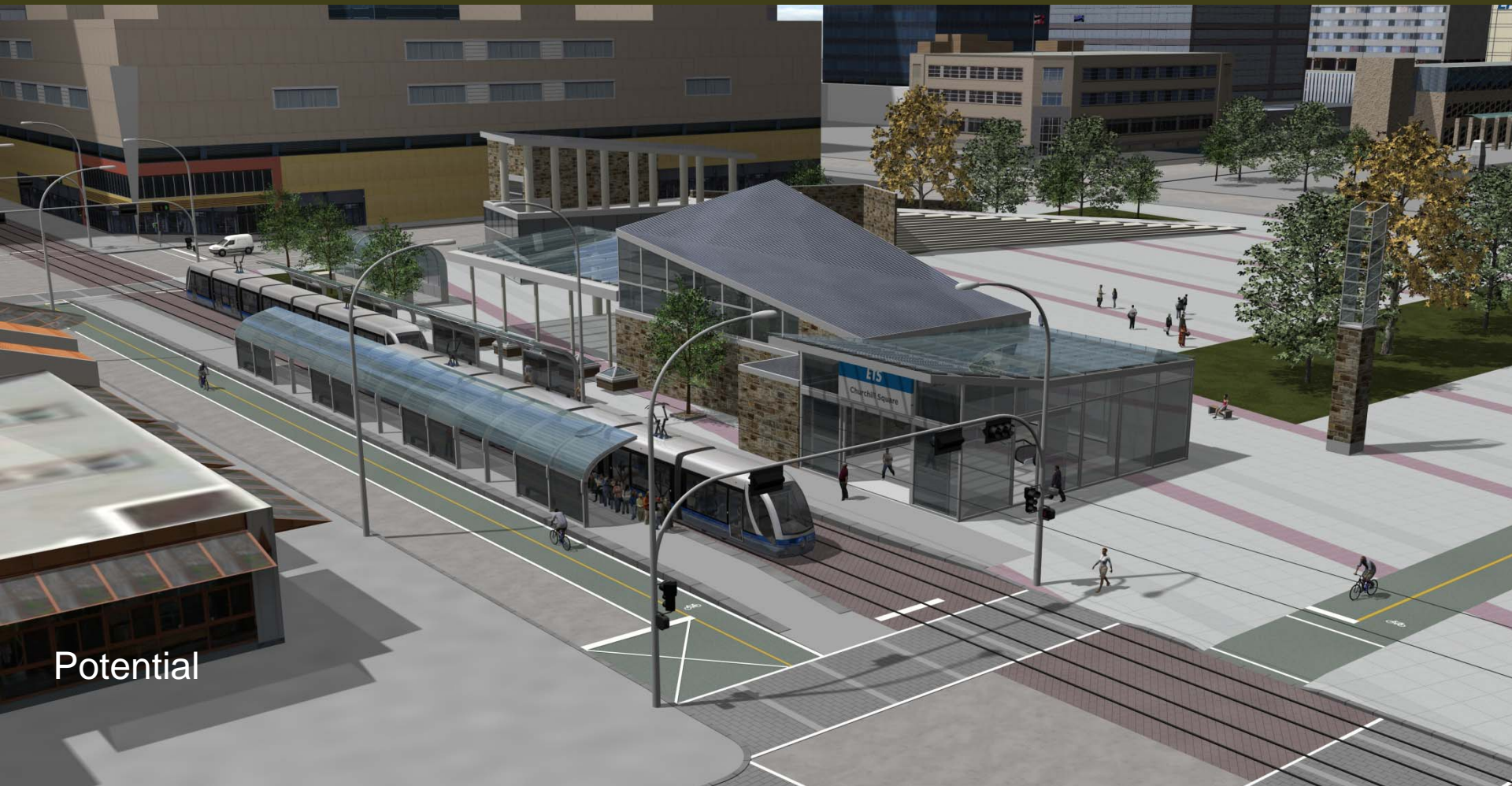


**Edmonton LRT EXPANSION**  
Churchill Stop Location

- |  |   |
|--|---|
|  LRT at Grade         |  Roadworks         |
|  Underground LRT      |  Cycle facilities  |
|  LRT stop platform    |  Sidewalk          |
|  Property Requirement |  On-street parking |

# Churchill Square Stop

Looking West on 102 Avenue between 99 Street & 100 Street



Potential

# Churchill Square Stop

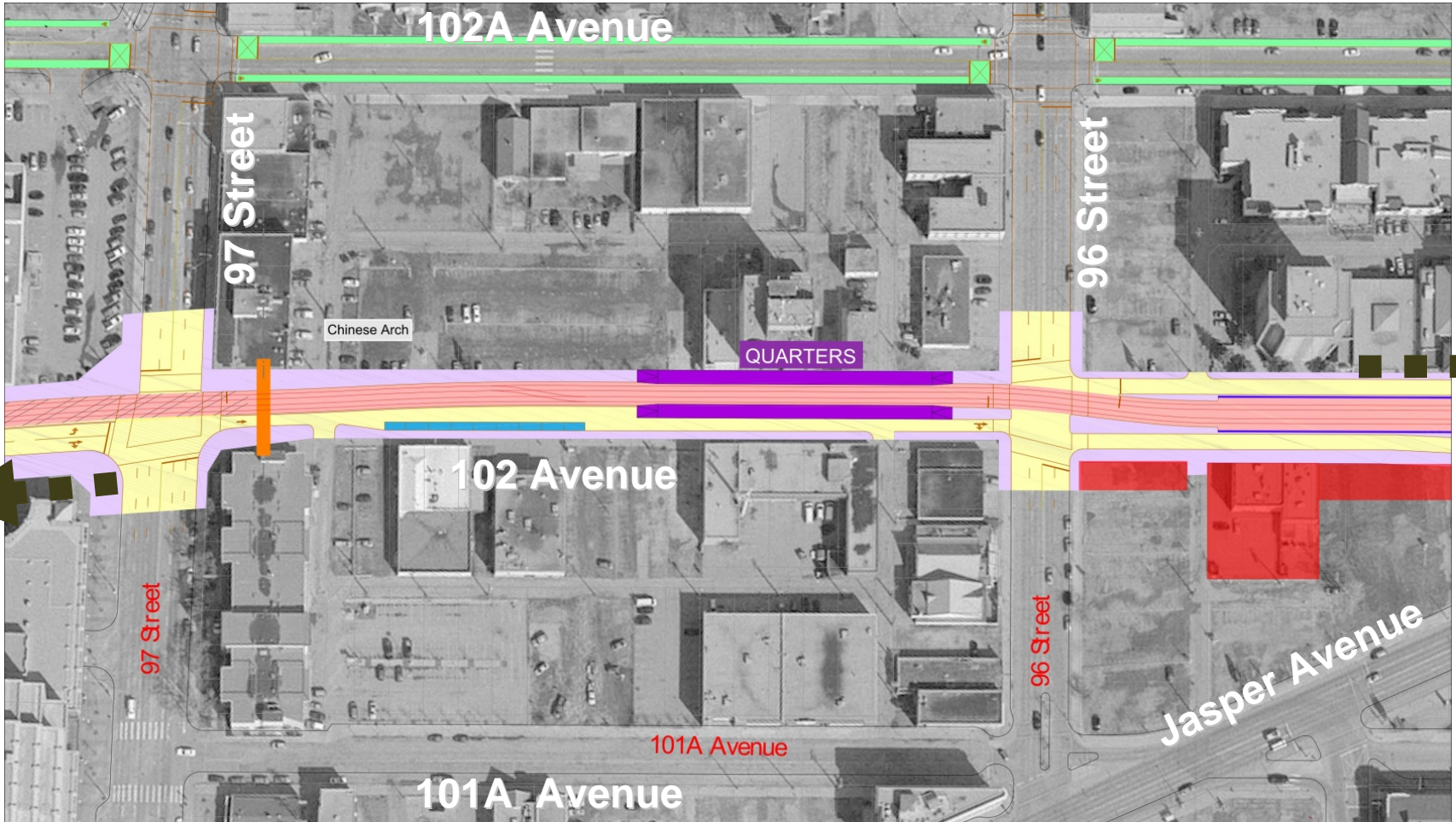
Looking West on 102 Avenue between 99 Street & 100 Street



Potential

# Quarters Stop

www.edmonton.ca/LRTProjects



**Edmonton LRT EXPANSION**  
 Downtown LRT Alignment  
 Quarters Stop Location

- LRT at Grade
- Roadworks
- Underground LRT
- Cycle facilities
- LRT stop platform
- Sidewalk
- Property Requirement
- On-street parking bays



Drawing Not to Scale  
 Drawing No. 2220005-03-QRT



# China Gate



Approximately 5.5 to 6.0 Metre

3.2 Metre

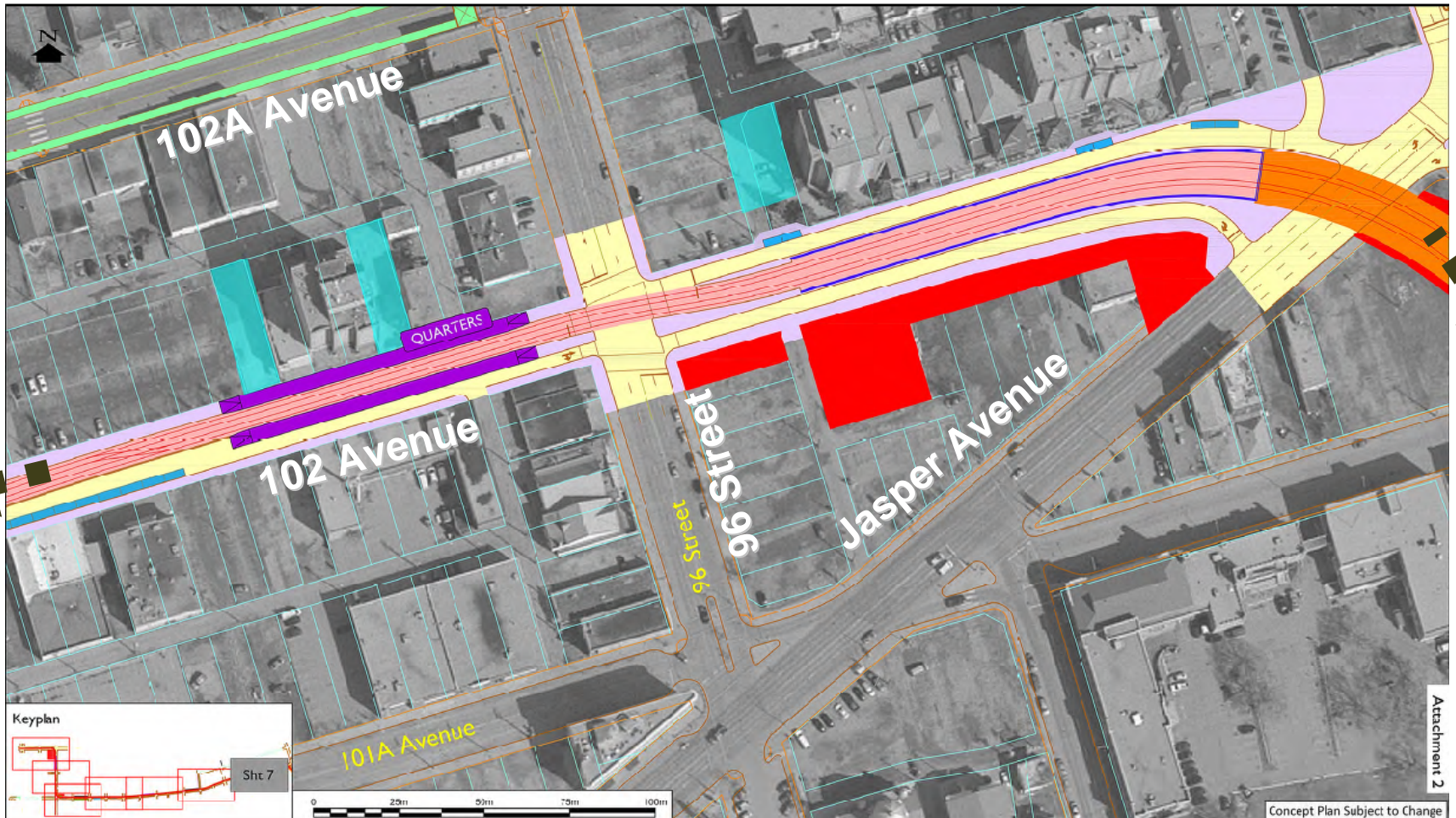
# Quarters Stop

Looking east on 102 Avenue from 96 Street



# Connection to Southeast LRT

www.edmonton.ca/LRTProjects



**EDMONTON LRT EXPANSION**  
 Downtown LRT Alignment - QUARTERS Stop location  
 Potential loading, access & drop-off locations

- |                             |                            |                    |
|-----------------------------|----------------------------|--------------------|
| Potential LRT at Grade      | Potential Roadworks        | Underground LRT    |
| Potential LRT stop platform | Potential cycle facilities | On-Street Parking  |
| Potential Property Impact   | Potential sidewalk         | Potential Drop-off |

Drawing Scale 1:1000 @ 17x11  
 Drawing No. 222005-03-RFC  
 Sheet No. 7 of 7

# Sample Portal Pictures

[www.edmonton.ca/LRTProjects](http://www.edmonton.ca/LRTProjects)



# 102 / 102 A Route Option

[www.edmonton.ca/LRTProjects](http://www.edmonton.ca/LRTProjects)

- 102 Avenue is the most direct corridor connection
- 102 Avenue is preferred by Quarters area development team
- 102 A route would be 200 metres longer
- Journey times would increase by 1.5 minutes
- Increase in journey time impacts ridership
- Cost for 102A route increase by approximately \$20 million
- Route would move portal from 102 to 102 A, not mitigate or remove the impact





# Downtown LRT Concept Plan

[www.edmonton.ca/LRTProjects](http://www.edmonton.ca/LRTProjects)

# THANK YOU