



Downtown LRT Connector Concept Plan

www.edmonton.ca/LRTProjects

Welcome Information Session April 28, 2011



Meeting Purpose

www.edmonton.ca/LRTProjects

- Our Team's commitment to you:
 - To provide you with information about the LRT planning process
 - Explain the Recommended Concept Plan for presentation to City Council
 - Answer questions and clarify information, so you are as informed as possible
 - Receive & summarize your feedback to inform City Council



Agenda

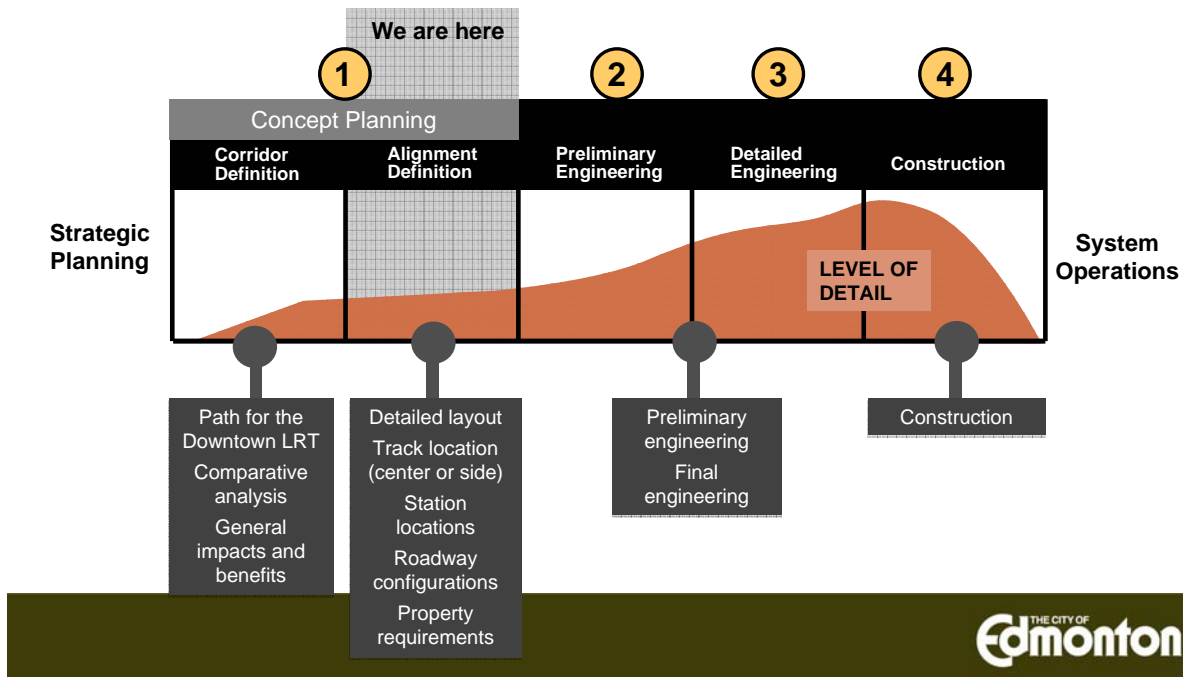
www.edmonton.ca/LRTProjects

- Meeting purpose
- LRT planning
- Edmonton LRT network
- Stakeholder & public involvement process & update
- Recommended concept plans
- Next steps
- Comments & questions



LRT Planning

www.edmonton.ca/LRTProjects





Downtown LRT Connector Concept Plan

www.edmonton.ca/LRTProjects

Edmonton LRT Network



Edmonton's Planning Hierarchy

www.edmonton.ca/LRTProjects

- The Way Ahead
(Strategic Plan) City Vision
- The Way We Grow
(Municipal Development Plan)
- The Way We Move
(Transportation Master Plan)
- Transit-Oriented Development (TOD)
Guidelines
- Capital City Downtown Plan



Public Transportation - Strategic Objective 5.1

www.edmonton.ca/LRTProjects

“The City will pursue expansion of the LRT to all sectors of the city with a goal to increase transit ridership and transit mode split, and spur the development of compact, urban communities.”

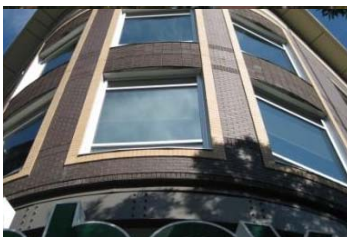
- Transportation Master Plan



THE CITY OF
Edmonton

Capital City Downtown Plan

www.edmonton.ca/LRTProjects



- Integrates new and emerging City policy
- Guides development of the downtown
 - Vibrant
 - Attractive
 - Higher-density
 - Mixed-use
 - Walkable
- Supports the integration of at-grade LRT as a catalyst for mixed-used

THE CITY OF
Edmonton

Transit-Oriented Development (TOD) Guidelines

www.edmonton.ca/LRTProjects

- Outlines land use and community investment recommendations near LRT nodes and along major bus corridors.



THE CITY OF
Edmonton

Urban-Style Low-Floor LRT

www.edmonton.ca/LRTProjects



- Operates on the surface
- Electrically powered from overhead lines.
- Low-floor vehicles
- Low-level platforms
- Integrated LRT stops in the Downtown streetscape
- Integrated facilities for pedestrians & bikes
- Urban design, redevelopment opportunities
- Encourage higher density & mixed use

THE CITY OF
Edmonton

Urban-Style Low-Floor LRT

www.edmonton.ca/LRTProjects



THE CITY OF
Edmonton

Urban-Style Low-Floor LRT

www.edmonton.ca/LRTProjects



THE CITY OF
Edmonton



West LRT Downtown Connection Southeast LRT



Downtown LRT Connector Concept Plan

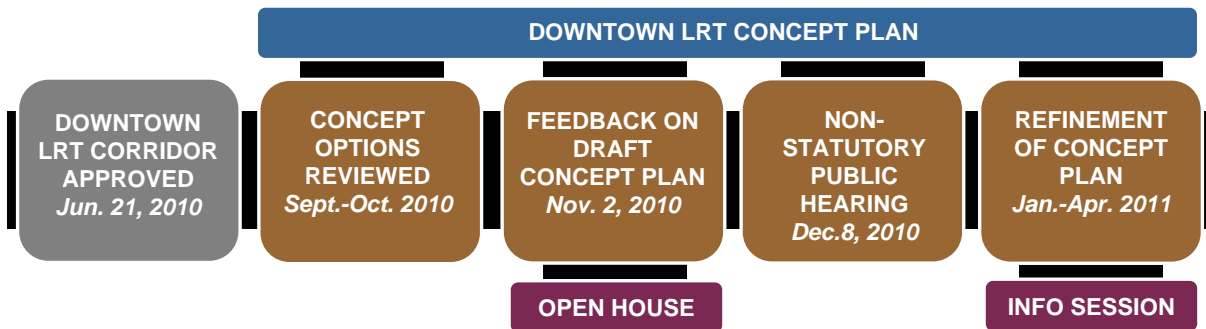
www.edmonton.ca/LRTProjects

Public Involvement



Public Outreach to Date

www.edmonton.ca/LRTProjects



THE CITY OF
Edmonton

Feedback

www.edmonton.ca/LRTProjects

- LRT is a benefit - Downtown should be a focal point
- Competing theme:
 - Desire for transit and pedestrian focused environment vs preserving vehicle access
- Safety and security – enhance at LRT stops and in adjacent areas
- LRT stop locations – balance interests
- Concerns with portal location in the Quarters
- Access & circulation concerns
- Architectural features

Address public concerns with design process...

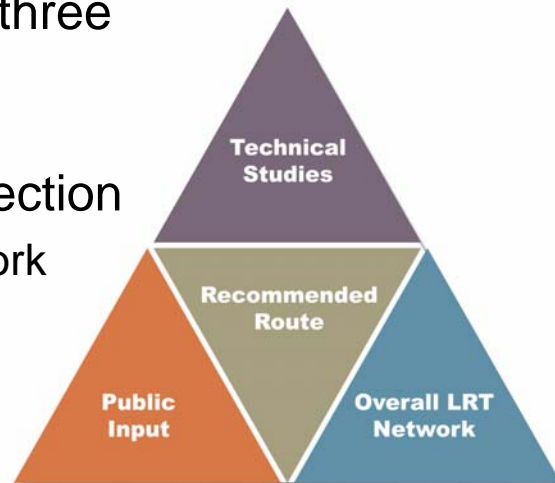


THE CITY OF
Edmonton

Evaluation & Corridor Details

www.edmonton.ca/LRTProjects

- Critical components - three components impacted decisions about the Downtown LRT Connection
 - The overall LRT Network Plan
 - Technical Analysis
 - Public Input



THE CITY OF
Edmonton

Downtown LRT Connector Concept Plan

www.edmonton.ca/LRTProjects

Recommended Concept Plan

THE CITY OF
Edmonton

Benefits & Trade Offs

www.edmonton.ca/LRTProjects

- Benefits and impacts exist
- Potential positive transportation and land use effects:
 - Creating improved mobility options
 - Encouraging density and redevelopment
 - Creating active streets
 - Supporting pedestrian/bike connections and network
 - Implementing the vision of Capital City Downtown Plan



THE CITY OF
Edmonton

Benefits & Trade Offs

www.edmonton.ca/LRTProjects

- Minimize property acquisition by utilizing:
 - Traffic lanes
 - On-street parking
- Constrained Rights-of-Way
- Transportation hierarchy:
 - Transit
 - Pedestrian
 - Cycle
 - Auto/freight



THE CITY OF
Edmonton



Changes Since Nov. 2010

www.edmonton.ca/LRTProjects

- Campus Stop has been moved to 107 Street (between 104 & 103 Avenue) & is now referred to as the 107 St. Stop
- LRT vehicle parking lane provided on 107 Street (between 102 & Jasper Avenue)
- Dedicated two way cycle lane provided on 102 Avenue (between 107 & 99 Street)
- Continuous eastbound traffic lane provided on 102 Avenue (between 107 & 95 Street)
- On street parking provided on 102 Avenue
- Parking loading provided between 96 & 95 Street
- Pedestrian crossing provided west of 95 Street on 102 Avenue



THE CITY OF
Edmonton



Downtown LRT Connector Concept Plan

www.edmonton.ca/LRTProjects

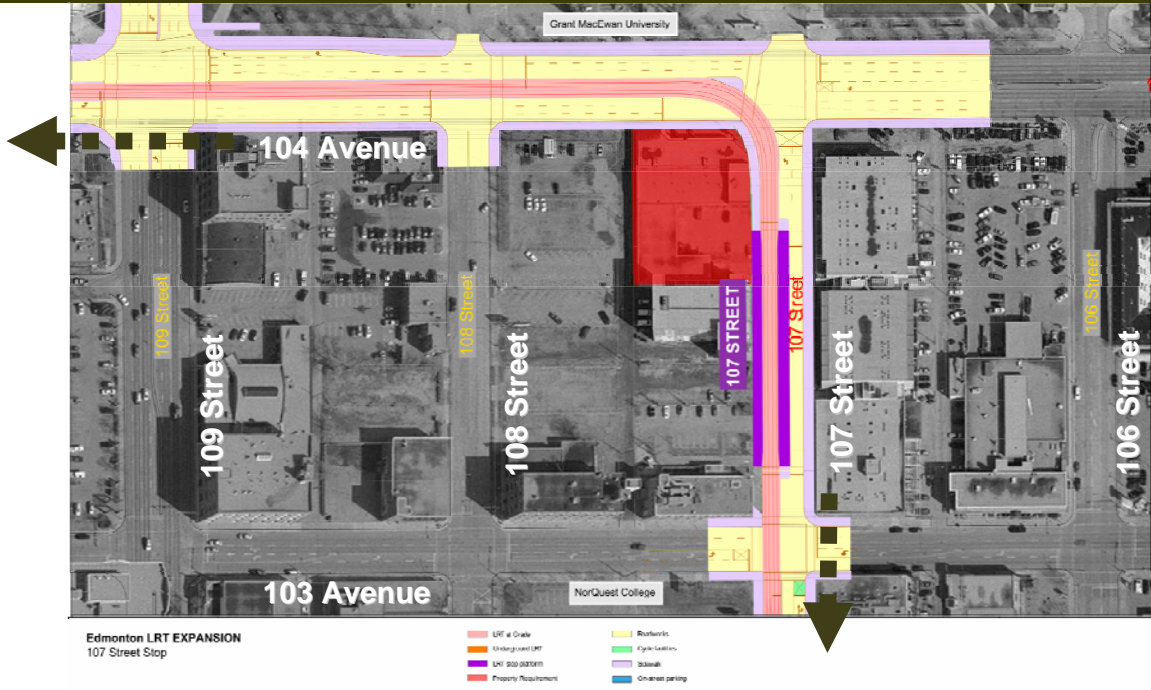
Recommended Concept Plan Walk Through



THE CITY OF
Edmonton

107 Street Stop

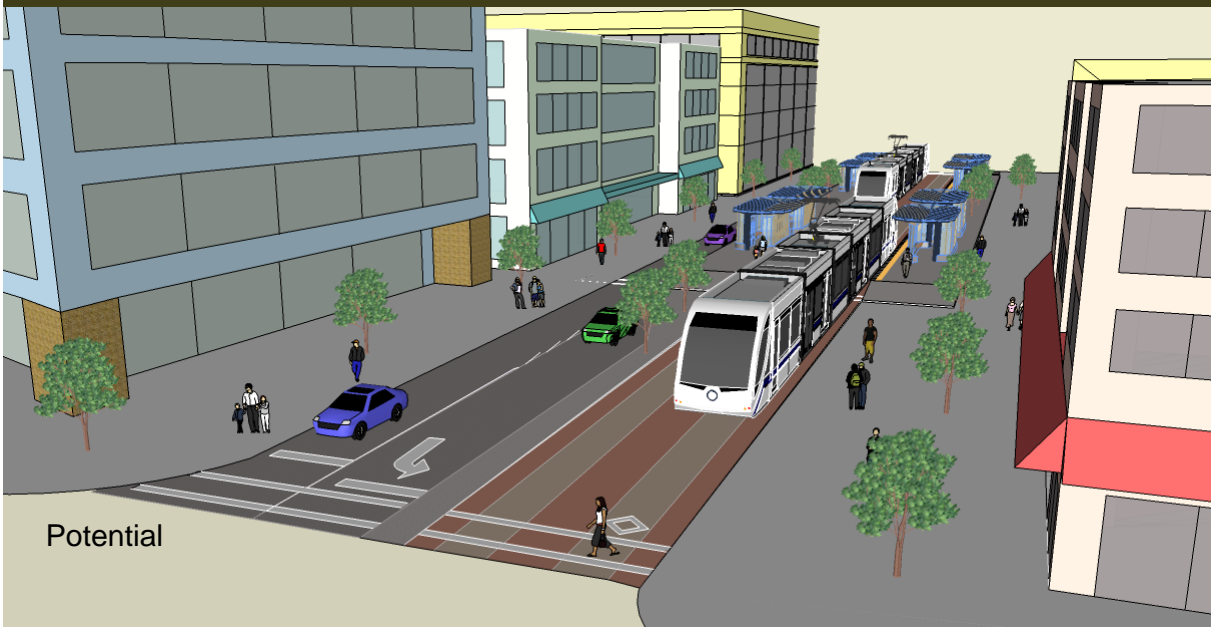
www.edmonton.ca/LRTProjects



Edmonton LRT EXPANSION
107 Street Stop

107 Street Stop

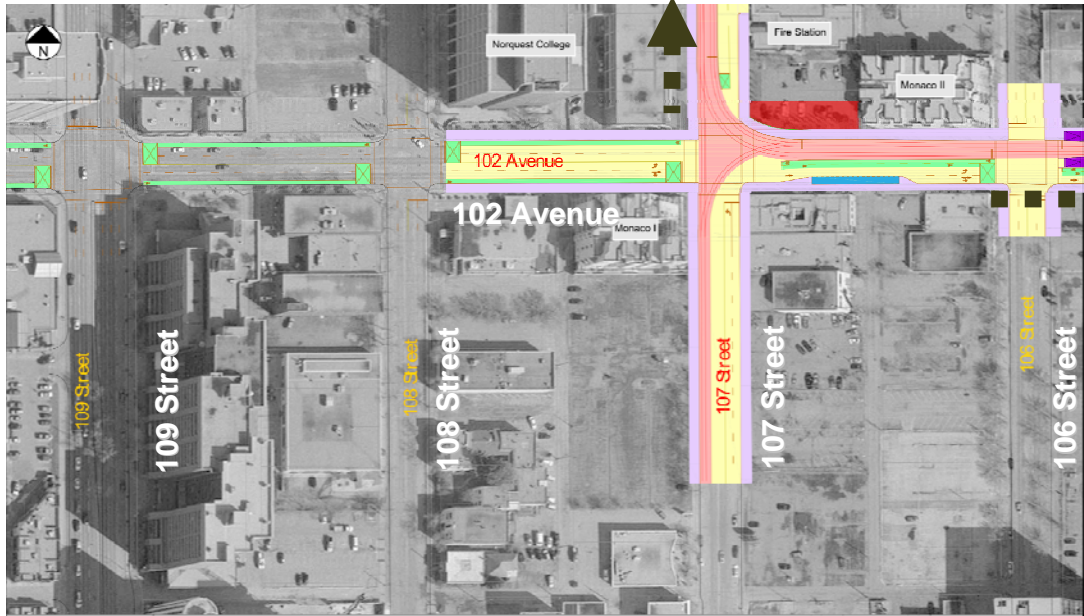
Looking south on 107 Street, from 104 Avenue



Potential

107/106 Street

www.edmonton.ca/LRTProjects



Edmonton LRT EXPANSION
102 Avenue at 107 Street

- LRT at Grade
- Underground LRT
- LRT stop platform
- Property Requirement
- Transitway
- Cycle facility
- Sidewalk
- On-street parking

105/106 Street Stop

www.edmonton.ca/LRTProjects

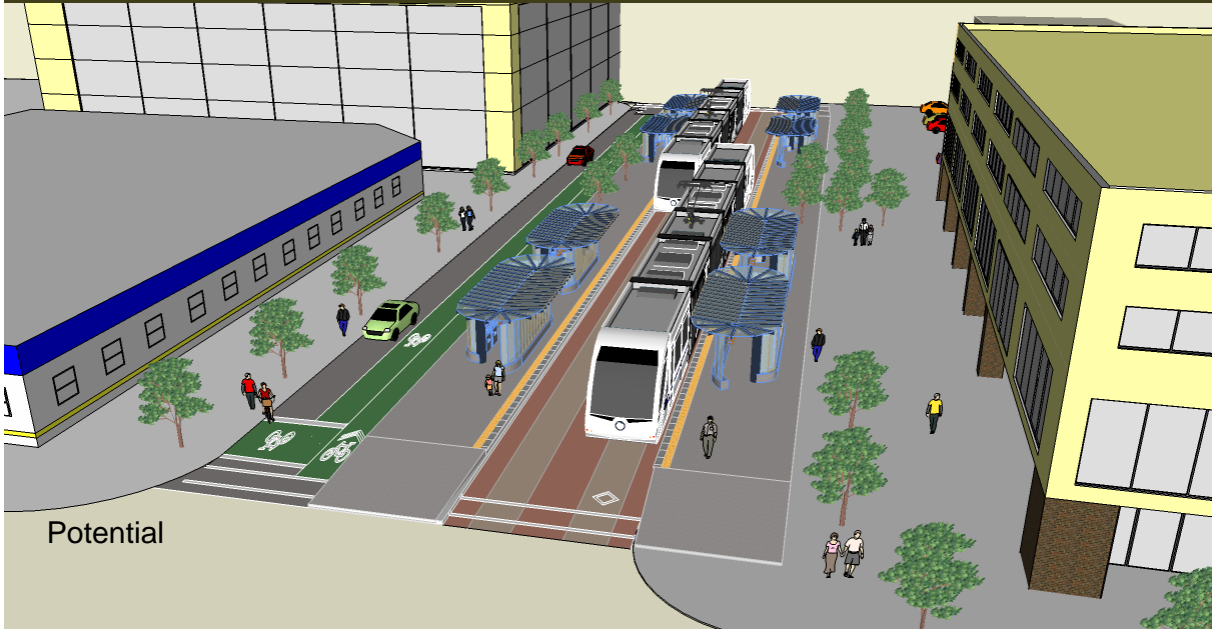


Edmonton LRT EXPANSION
105/106 Stop Location

- LRT at Grade
- Underground LRT
- LRT stop platform
- Property Requirement
- Transitway
- Cycle facility
- Sidewalk
- On-street parking

105/106 Street Stop

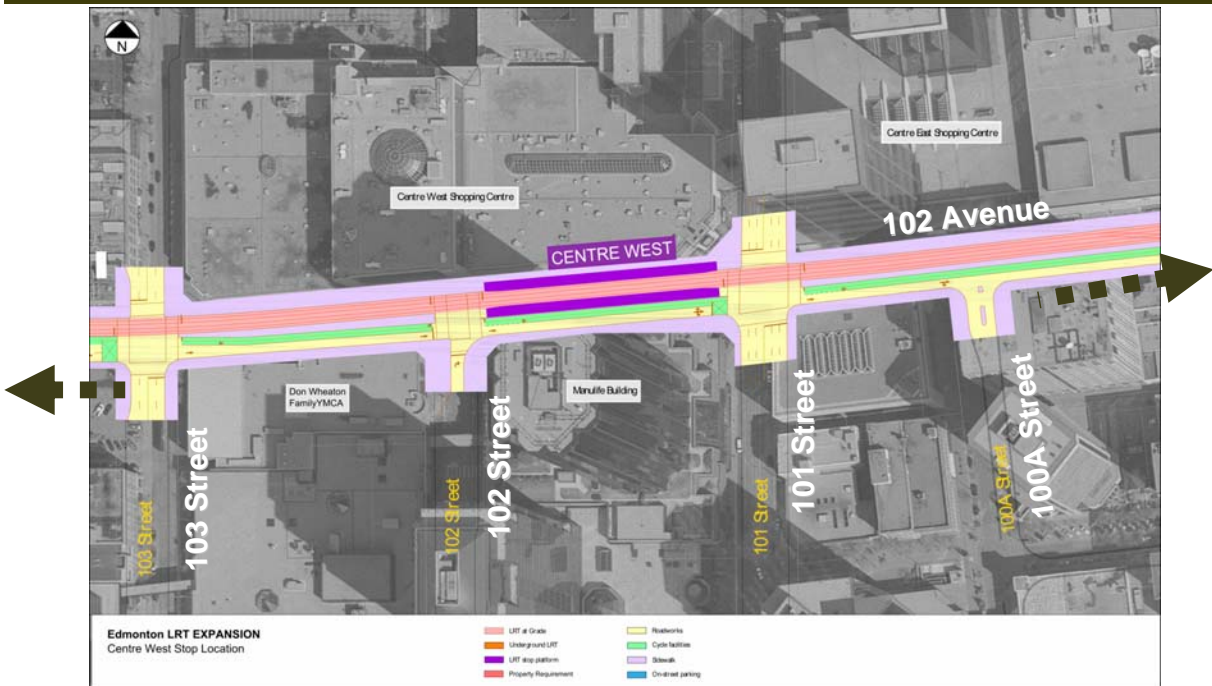
Looking west on 102 Avenue between 105 Street & 106 Street



Potential

Centre West Stop

www.edmonton.ca/LRTProjects



Edmonton LRT EXPANSION
Centre West Stop Location

- LRT at Grade
- Underground LRT
- LRT stop platform
- Property Requirement
- Right-of-Way
- Cycle facilities
- Sidewalk
- On-street parking

Centre West Stop

Looking West on 102 Avenue between 101 Street & 102 Street



Potential

Churchill Square Stop

www.edmonton.ca/LRTPProjects



Edmonton LRT EXPANSION
Churchill Stop Location

- LRT at Grade
- Staged and LRT
- LRT stop platform
- Property Requirements
- Barriers
- Cycle facility
- Stops
- On street carline

Churchill Square Stop

Looking West on 102 Avenue between 99 Street & 100 Street



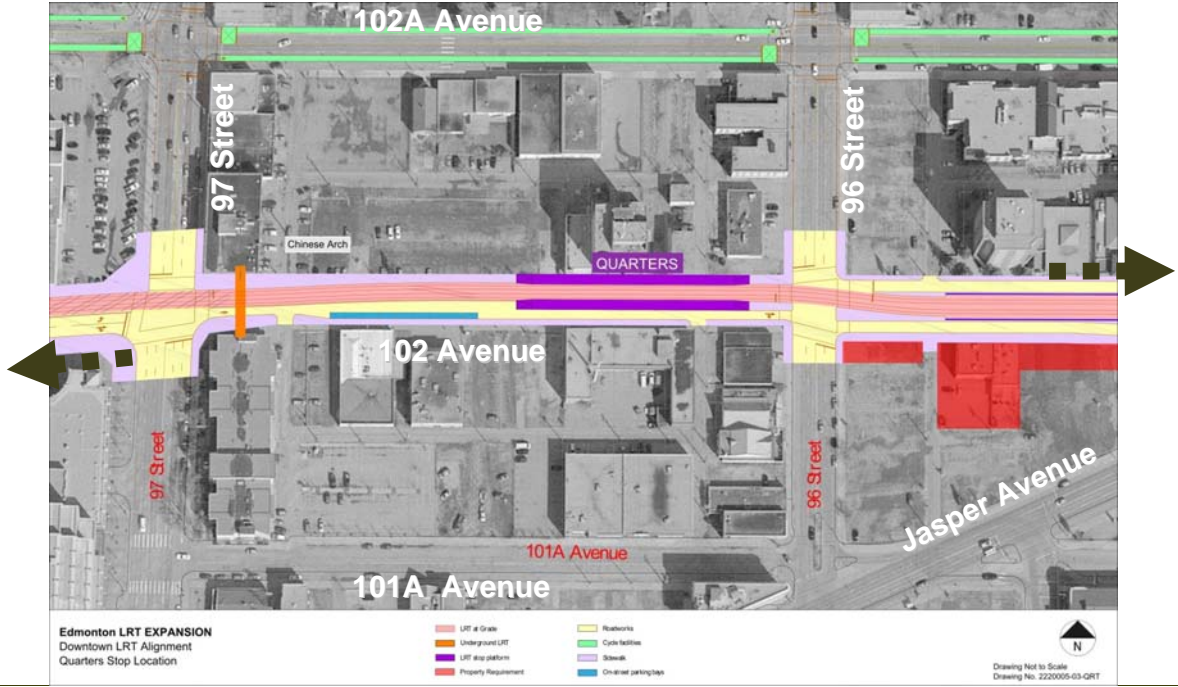
Churchill Square Stop

Looking West on 102 Avenue between 99 Street & 100 Street



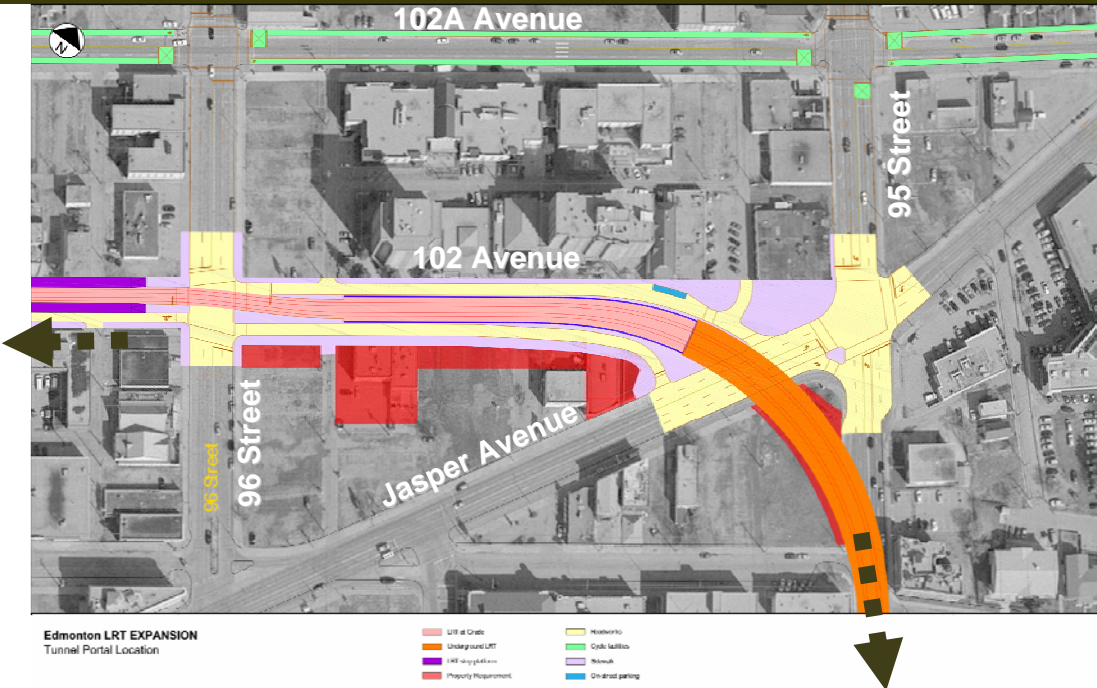
Quarters Stop

www.edmonton.ca/LRTProjects



Connection to Southeast LRT

www.edmonton.ca/LRTProjects



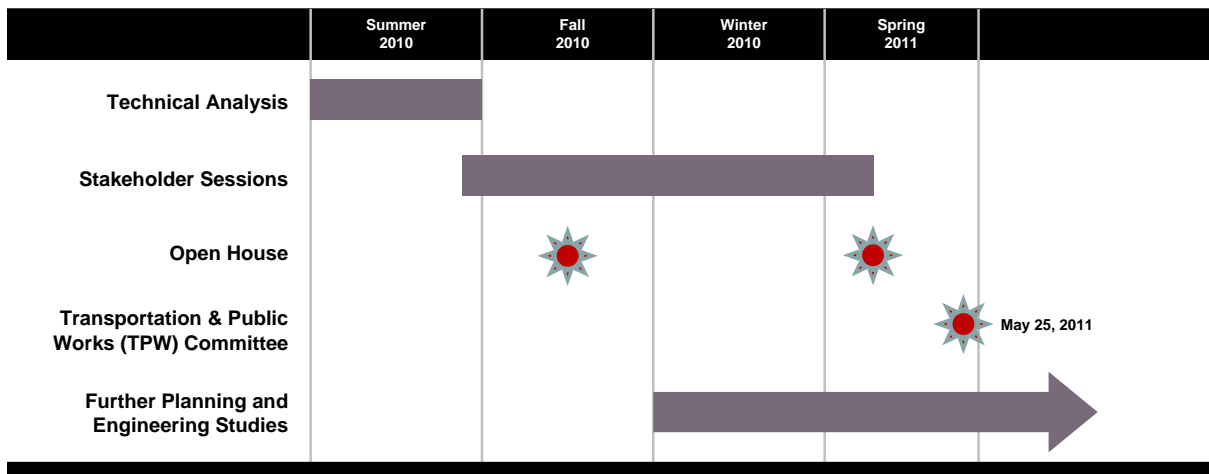
Sample Portal Pictures

www.edmonton.ca/LRTProjects



Next Steps

www.edmonton.ca/LRTProjects





Downtown LRT Connector Concept Plan

www.edmonton.ca/LRTProjects

Question & Answer Session



THE CITY OF
Edmonton



“Ground Rules”

www.edmonton.ca/LRTProjects

- 2 minutes for each participant to ask a question or make a comment. One follow-up question (1 minute)
- Will recognize 3 people for each round of questions; persons with microphones will go to those participants to ask their questions
- 3 rounds of questions
- Additional questions from same person not recognized until no new participants are wanting to ask questions
- Questions and responses will be recorded; please use microphones



THE CITY OF
Edmonton



Downtown LRT Concept Plan

www.edmonton.ca/LRTProjects

THANK YOU

