

LEWIS FARMS FACILITY & PARK



WHAT WE HEARD

EXPLORING OPTIONS COMMUNITY ENGAGEMENT



WHAT WE HEARD

YOUR IDEAS,
YOUR VISION,
YOUR DIRECTION...
IN ACTION!

WHAT IS THE LEWIS FARMS FACILITY & PARK?



RECREATION CENTRE



PUBLIC LIBRARY



HIGH SCHOOL ACADEMIC CENTRE



DISTRIC PARK

DESIGN

Our design process will take place in three phases in 2015 – 16:



SHARING IDEAS

(APRIL – JULY 2015)

EXPLORING OPTIONS

(MAY – JUNE 2016)

SETTING THE DIRECTION

(FALL 2016)

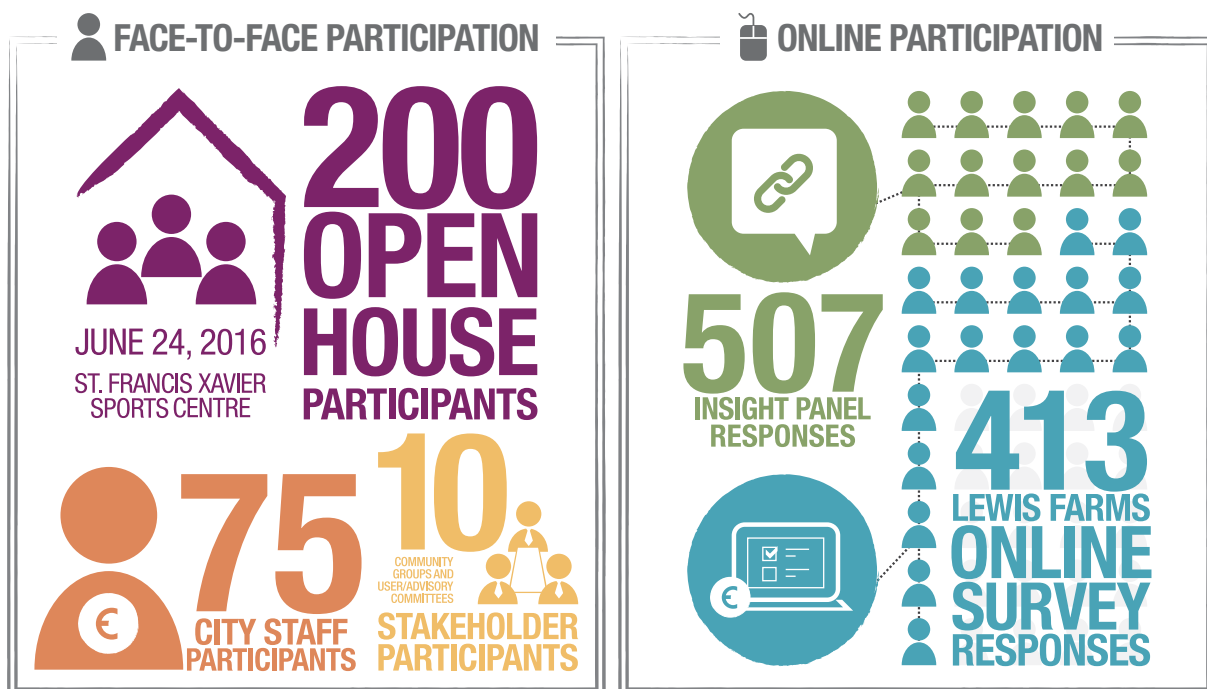
EXECUTIVE SUMMARY

IN LATE 2014, City Council approved funding for the schematic design of the Lewis Farms Facility and Park. This consultation builds upon the two Council approved plans for the Facility and Park: 2007 Council approved Medium Term Recreation Facility and Sports Field Plan and the 2011 Functional Program (high level plan).

The City retained the services of an architectural team (Saucier and Perrotte and Architecture|TKalcic Bengert) who led a design team to develop the facility concept. In addition to the architectural team, the design team includes representatives from Edmonton Public Library, Edmonton Catholic Schools, and several representatives from the City itself (architects, facility planners, facility operators, recreational programmers, and others).

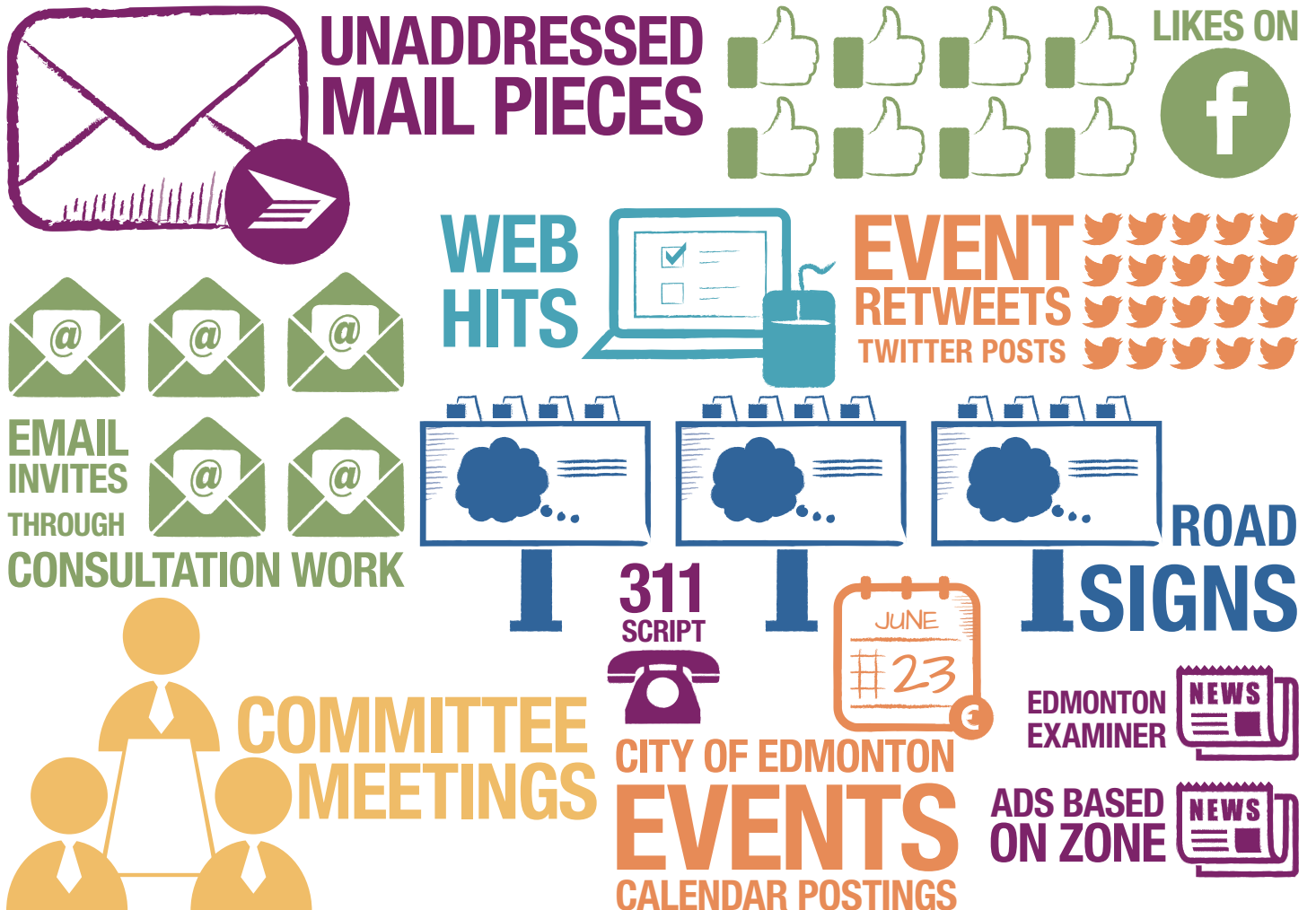
During May to June 2016, we presented facility and park design concepts (developed by the design team) to gather comments from the community, potential users, and stakeholders. The participation statistics from our consultation activities are noted below. The findings from each of these activities is presented later in this document.

The facility and site concepts were developed based upon the program created from the Sharing Ideas consultation. In this Exploring Options engagement, people were shown a facility concept and asked to identify what they liked, didn't like, and any suggested changes. Questions were also posed about the potential addition of a 7.5m & 10m dive platform; enhancement of the 25m pool to a 53m pool; and the potential inclusion of universal change rooms. Two possible site concepts were also presented to solicit feedback about: likes, dislikes, and possible changes.



WE USED THE FOLLOWING TOOLS TO GET THE WORD OUT ABOUT THE EXPLORING OPTIONS CONSULTATION SESSION.

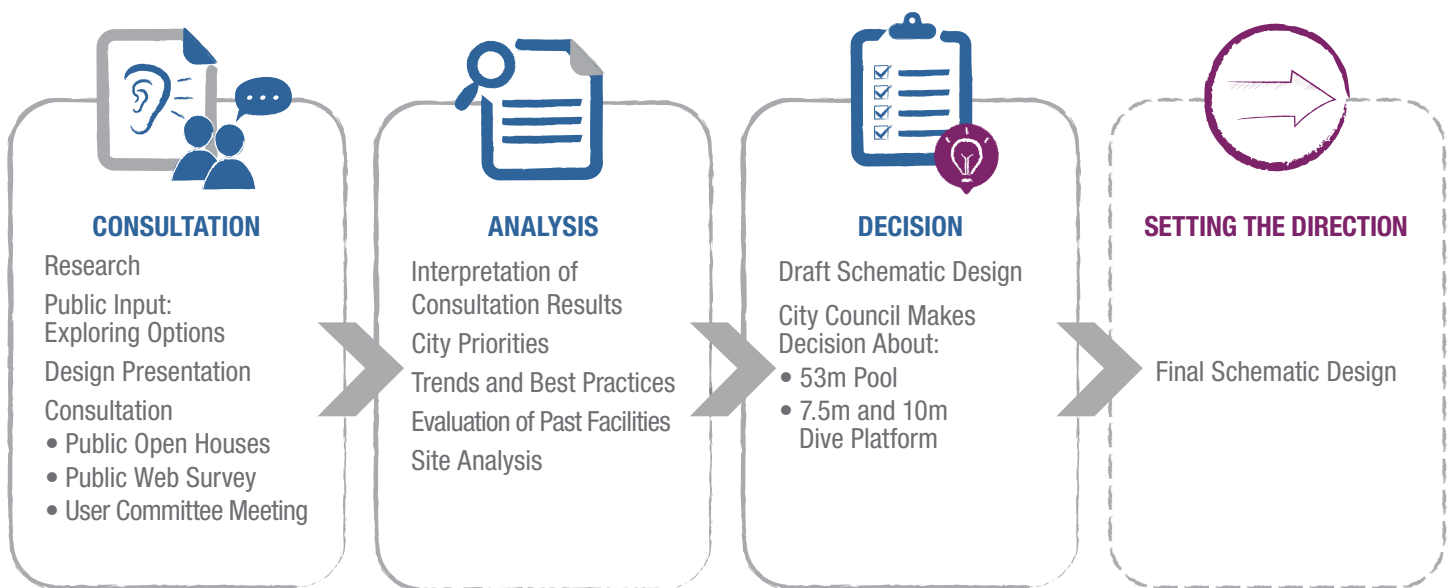
HOW WE COMMUNICATED



This report includes a description of the consultation activities that made up the Exploring Options design phase. It includes how we communicated with the public and stakeholders, who participated, and how they participated. The timeline below illustrates where these activities fit in the process.

Also included is an analysis of the results from the Exploring Options engagement which will be used to modify and revise the facility and park concepts. A separate document of [What You Said](#) can be found on our website which details all the feedback received from the public for the Exploring Options consultation.

Finally, the decisions made with regards to the facility and site concepts are presented on page 22.



The facility and park programs were developed based on the feedback and analysis during the Sharing Ideas engagement. The draft concept design was presented to the public and stakeholders through the Exploring Options engagement. Feedback was gathered about the facility and site designs. As well, we asked you about an enhancement of the 25m pool to a 53m pool; inclusion of a 7.5m & 10m dive platform, and inclusion of universal change rooms.

Based on the feedback gathered, along with the City priorities, trends and best practices, an evaluation of past facilities, and site analysis, revisions were made to the facility and site designs. City Council will make a decision about the 53m pool and the 7.5m & 10m dive platform which will lead to the development of a draft schematic design. The draft schematic design will be the focus of more engagement in the “Setting the Direction” phase, after which a final schematic design will be produced.



This graphic identifies the facility and site program. The program was developed based, in part, on the **SHARING IDEAS** phase. This program was used by the architects and design team to develop the facility and site concepts that were then commented on by the public, stakeholders, and City staff.

RECOMMENDED PROGRAM



AQUATIC ACTIVITIES

- aquatic facility providing a second competitive training venue in Edmonton
- 25x30m deep tank with springboards and dive platforms that will support synchronized swimming, water polo, and diving
- spectator seating for local and regional competitions
- leisure pool with water play features
- tot pool
- 25m ten lane pool
- whirlpool and steam room



MULTI-PURPOSE

- indoor child development space
- child minding space
- bouldering wall
- three dividable multi-purpose rooms



FACILITY SUPPORT

- lobby area
- washrooms and locker rooms
- food retail units
- commercial retail unit
- administration space
- storage space



INDOOR GYMNASIUM

- three gymnasiums
- large playing surfaces
- assembly areas that can be divided into smaller functional areas



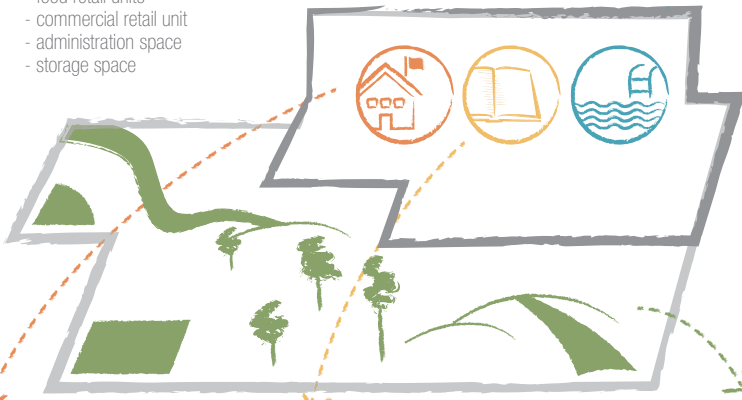
INDOOR ARENA

- twin NHL indoor rinks
- outdoor leisure ice
- skate rental kiosk



FITNESS & WEIGHT TRAINING

- large cardio and weight training area
- two fitness studios
- non-competitive running / walking track



ACADEMIC CENTRE

- standard and outreach classrooms
- kitchen
- science lab and makerspace
- child care space
- administration spaces



LIBRARY ACTIVITIES

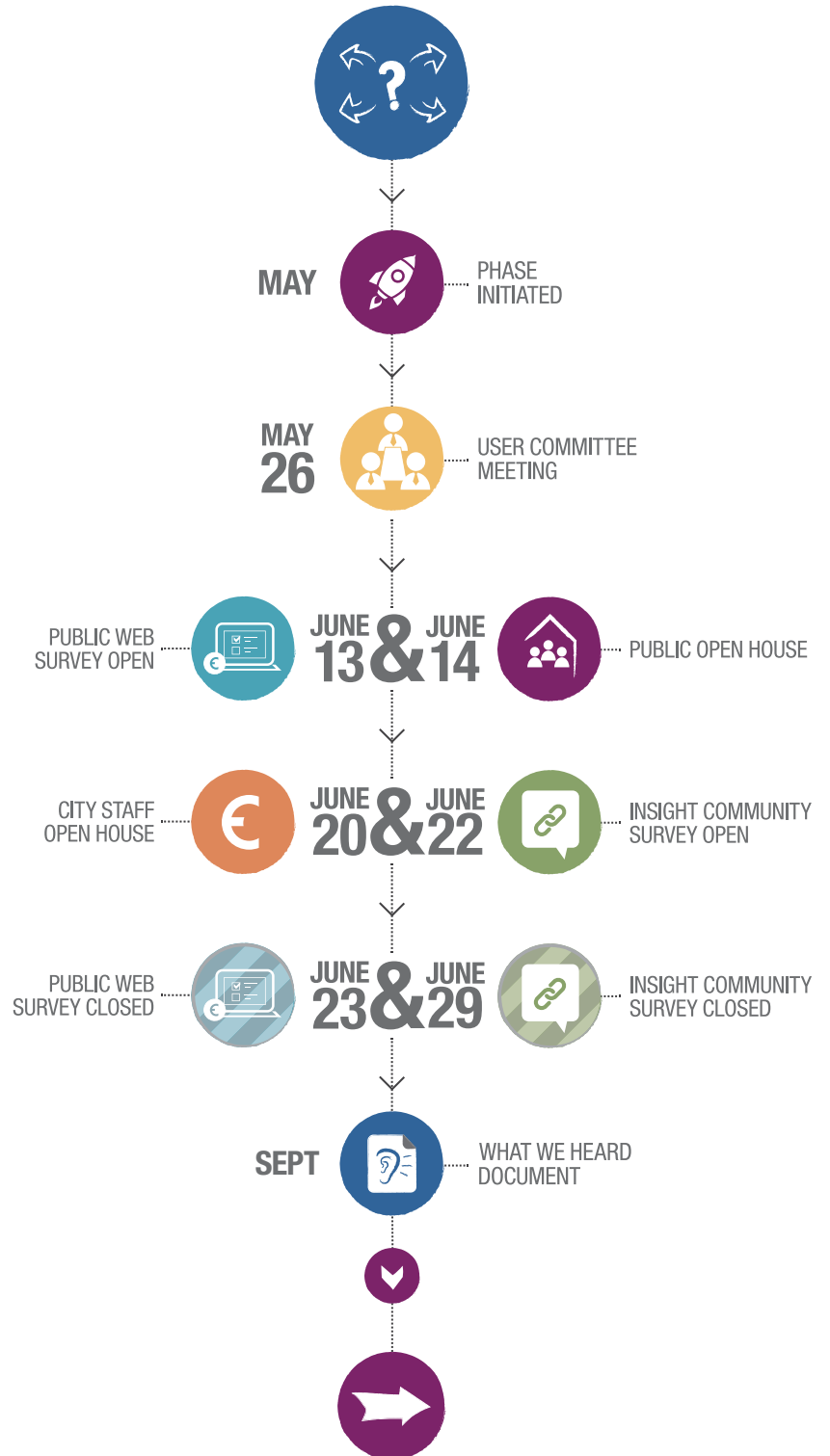
- medium sized Community Branch
- library material borrowing
- public computers
- community room
- quiet study and reading spaces
- children and teen areas
- makerspace for developing digital literacy skills
- administration spaces



DISTRICT PARK

- urban plaza / outdoor social gathering area
- diamond and rectangular sports fields
- open green space
- tennis and basketball courts
- interactive water play park
- public washrooms
- parks operations Satellite Service Yard
- skateboard park

EXPLORING OPTIONS PROJECT TIMELINE



OUR APPROACH

The **EXPLORING OPTIONS** consultation session focused on hearing directly from citizens and future users of the facility as they reviewed and provided comment on a draft facility concept and draft site plans for the Lewis Farms Facility and Park.

Based on the facility and site concepts presented, comments were sought regarding what people liked, did not like, or wanted changed. Feedback was also collected regarding the potential inclusion of a 53m pool, a 7.5m & 10m dive platform, and universal change rooms.



Gathered Your Input



PUBLIC OPEN HOUSE: 200 PARTICIPANTS

Community Services hosted an Open House on June 24, 2016 at the St. Francis Xavier Sports Centre. Those who could not attend the Open House were invited to fill out the online survey.

STAKEHOLDER MEETING: 14

A discussion session was convened with representatives from the Arena, sports Field, Aquatic, and Gymnasium User Committees. Specific sport clubs represented include: Crestwood Skating Club, diving, Edmonton Keyano Swim Club, Edmonton Sport and Social Club, Mayfield Figure Skating Club, minor hockey, and Edmonton Youth Baseball.

CITY STAFF OPEN HOUSE PARTICIPANTS: 75

An Open House was convened to gather the thoughts of staff that work in/with recreational facilities and parks.

ONLINE SURVEY: 920 RESPONDENTS

One online survey was distributed through two different channels.

INSIGHT PANEL SURVEY: 507 RESPONDENTS

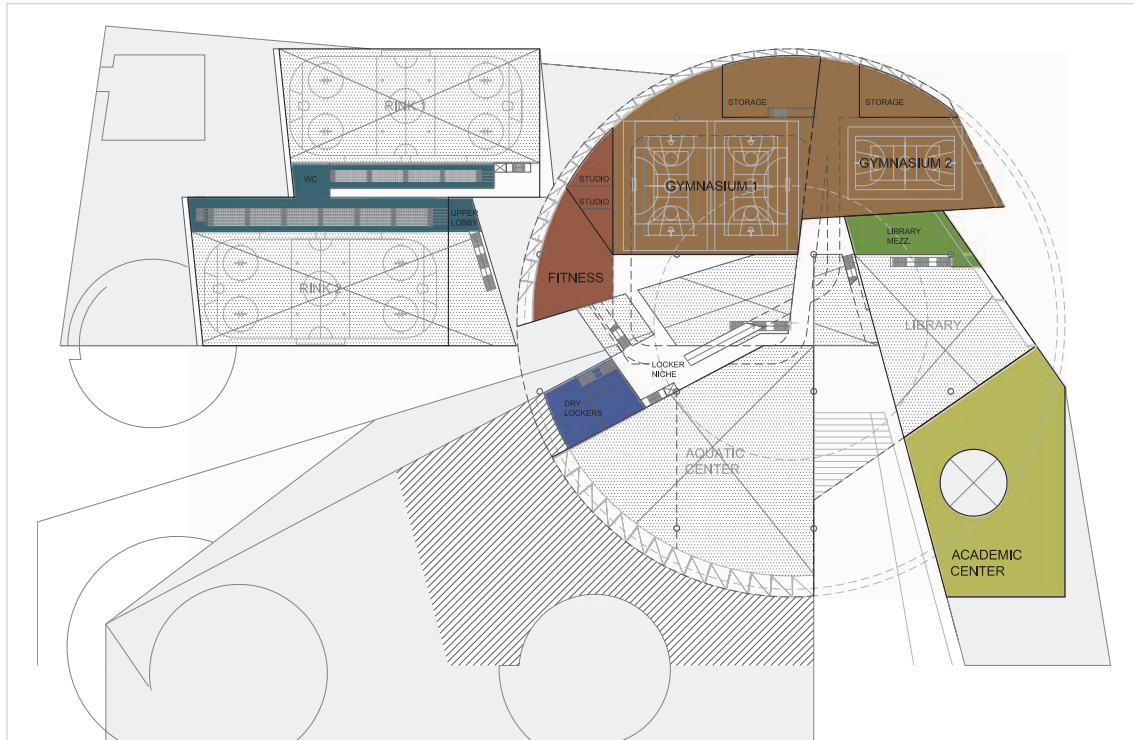
Accessed through www.edmontoninsightcommunity.ca
The Edmonton Insight Community is a group of Edmontonians that provides feedback on City policies, initiatives and community issues through online surveys. Panel members from across Edmonton were asked if they would like to opt-in to complete the Lewis Farms Facility and Park online survey.

LEWIS FARMS ONLINE SURVEY: 413 RESPONDENTS

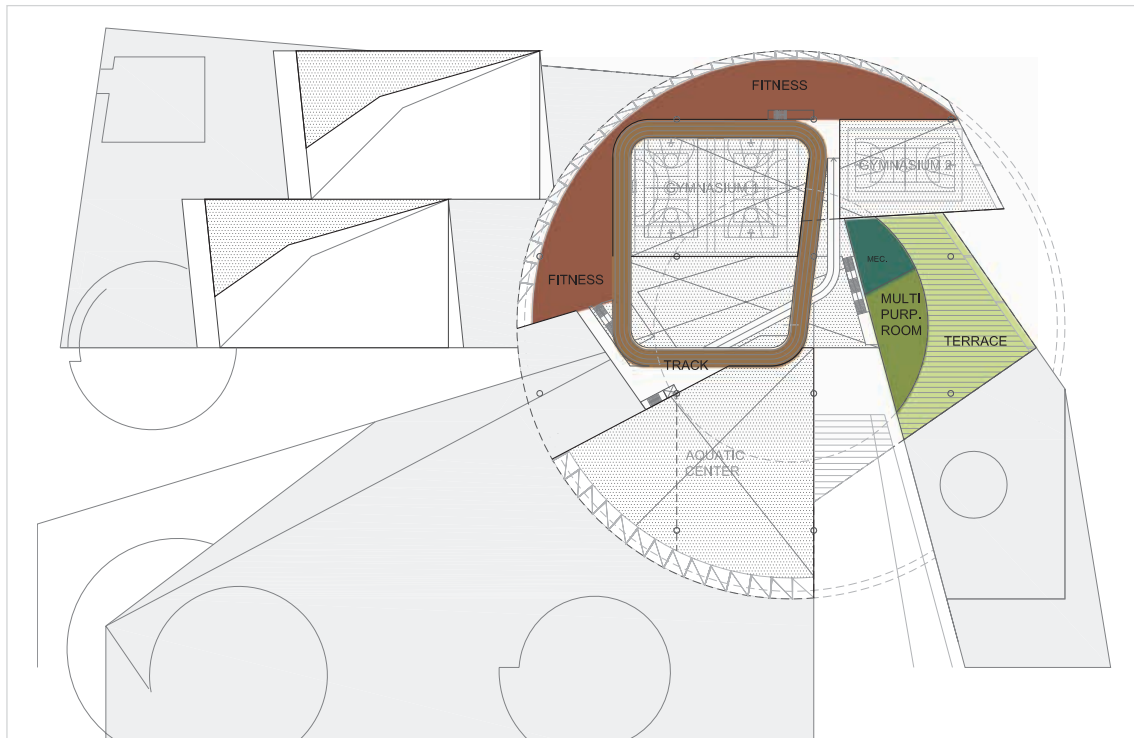
Accessed through www.edmonton.ca/lewisfarmsfacilityandpark
A survey link was also posted on our web site. Survey respondents were notified to fill out this survey through our consultation network (i.e. user committees, community leagues, etc.) by email and Canada Post admail notifications.

HOW YOU PARTICIPATED

FACILITY CONCEPT: SECOND LEVEL



FACILITY CONCEPT: THIRD LEVEL



SUMMARY OF FEEDBACK



PUBLIC OPEN HOUSE

LIKE

- Three gymnasia including the separation of one from the others.
- There are different activity areas including the indoor track and the market area. Family oriented.
- Design is not a big box, it is interesting.
- Aquatic area with a variety of elements including the lazy river. Separation of wet and dry change rooms.
- The west end in Edmonton needs a facility like this.

CHANGE

- Add indoor turf/soccer field.
- Eliminate wasted space (open viewing between levels).
- Ensure sufficient seating areas including for and in the aquatic area.

DISLIKE

- Not enough multipurpose rooms or ice sheets.
- Indoor soccer missing as is an indoor playground.
- Too many sheets of ice.
- More attention was spend on the building's design than on functionality.
- Fitness area split over two levels and not on the main floor.



PUBLIC ONLINE SURVEY

LIKE

- Multiplex has areas for all ages and interests including a competition pool, library, daycare, and climbing wall.
- Aquatic centre is valuable and provides another needed pool.
- West end Edmonton needs a facility like this.
- Layout is good (multilevel layout) with fitness and track on the third level.
- Design is good and modern and not just a box. The space is well allocated and the open concept is good with activities for children on one level.

CHANGE

- 50m swimming needed that can accommodate blocks on both ends. High diving platform should be included.
- Additional rinks are needed.
- Simplify the design: match the design to the area's buildings.

DISLIKE

- Not enough ice sheets.
- Round building is inefficient: functionality is more important than design.
- 25m pool is too small: another competitive aquatics venue is needed. The pool deck is too small: it needs to accommodate equipment, event staging, spectator seating.



USER GROUP COMMITTEE¹

LIKE

- Separation between the drop-in gym and rental gym.
- Ability to look down from the track into the facility.

¹ A general discuss was held with members of the User Group Committee. Because of this format, responses were not collected in the same manner as with the other engagement mechanisms. For feedback on the facility concept, only comments about positive aspects were discussed.



INSIGHT COMMUNITY

LIKE

- Wide variety of elements.
- Facility design: interesting and attractive.
- Layout of facility shows a good use of space. The multi-level design is good.

CHANGE

- The pool should be 50m.
- Add indoor child playground area. Expand meeting/food area.
- Ensure security and limit access to patrons.
- Better public transportation linkages.
- Redesign building to change circular design.
- Additional bathrooms needed.
- Mitigate any sound impacts from gymnasiums to other areas.

DISLIKE

- Circular design results in awkward space layout.
- Indoor track: sharp corners; make it more interesting (circle pool, change shape).
- Ensure natural light is brought in to the building.
- Noise from the gymnasiums impacting space beneath and the two-level fitness centre.
- Central focus could contribute to congestion—access control could be an issue. The gathering space needs to be of sufficient size.



CITY STAFF OPEN HOUSE

LIKE

- Central control desk at the facility focal point is a good plan.
- Third floor fitness. The three gymnasiums and the two dive pads are good components to have.
- Outdoor terrace on third level is a nice feature.
- Elevator to basement and shipping/receiving area is good.

CHANGE

- Bring natural light in, but not direct light.
- Central space: ensure large enough gathering space; provide ample plug-ins for patrons; move admin spaces to be more central.
- Security issues with multiple access points into the building.

DISLIKE

- Circular design gives rooms odd shapes.
- Noise coming from gymnasiums could present problems.
- Fitness area over two levels is not a good layout.

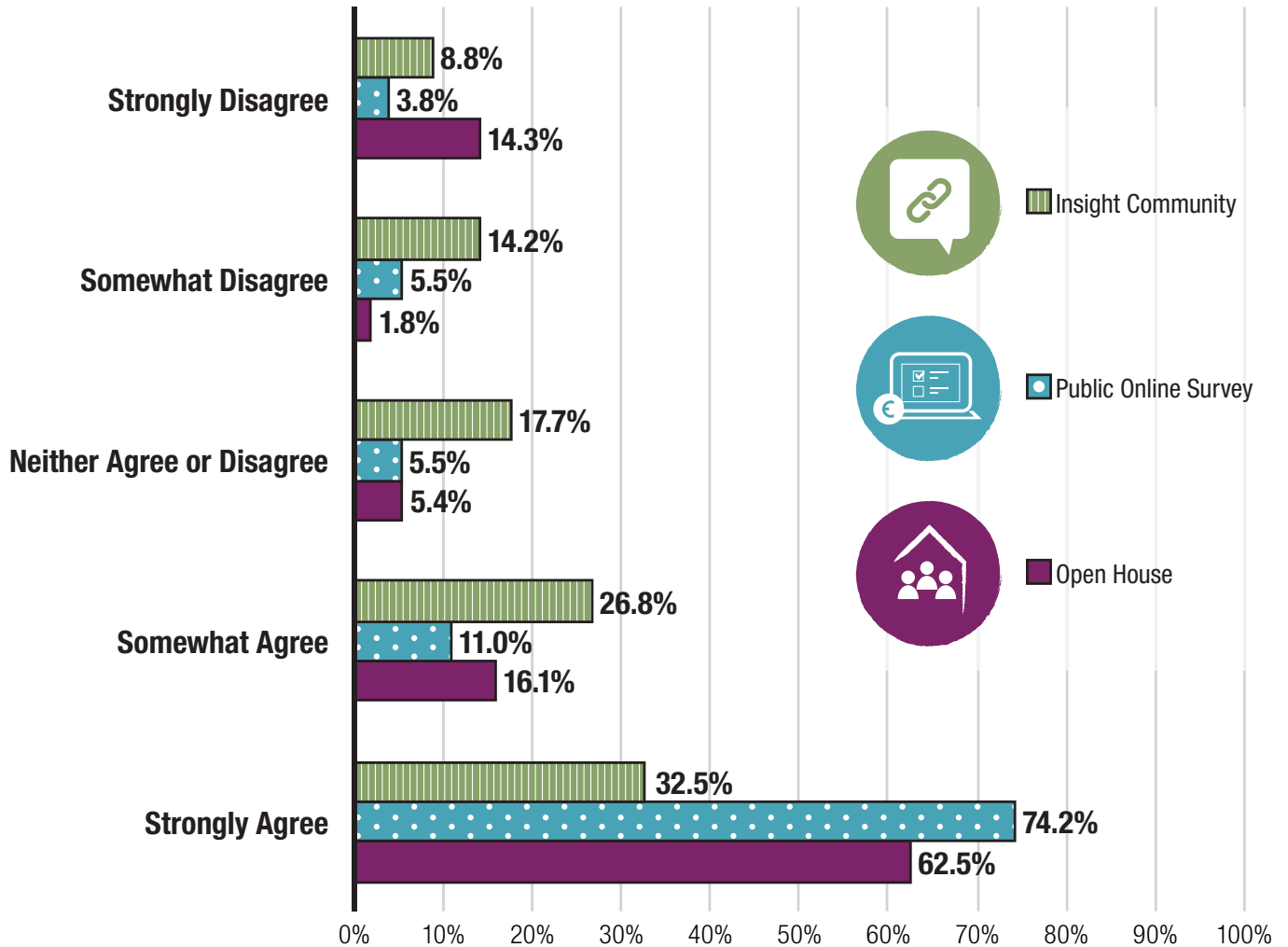
WHAT ARE THE TAKE-AWAYS?

- The variety of activity spaces is viewed very positively as is the multi-level design. The design is seen as ensuring the main level provides elements for children and youth.
- There was some comments expressed some design elements.
 - **Noise concerns:** sound from the gymnasiums causing disturbances to the rooms beneath them and to the other spaces.
 - **Unique design:** some identified it is appealing and not another rectangular box. Others felt the design should focus functionality and that the circular design results in oddly shaped spaces.
- The division of the fitness into two levels was unappealing to some.
- Others wondered why indoor soccer/turf fields were not included as part of the design.
- There was a need expressed to ensure the central gathering/café area is of sufficient size.
- Some wondered how security will be managed from this central point to ensure that only paying patrons can access the activity spaces.

53M POOL ENHANCEMENT FEEDBACK

City Council requested that the possible enhancement of the 25m pool to a 53m pool be explored. The 25m pool could be made into a 53m pool with a moveable bulkhead. The bulkhead would allow two 25m pools to be configured; alternatively, a single 50m swim tank could be configured. Including a larger pool would result in greater capital and operating costs. We asked you to indicate your level of support for the enhancement of the pool from a 25m tank to a 53m tank with moveable bulkhead.

I SUPPORT ENLARGING THE POOL FROM 25M TO 53M



- **User Group Committee:**
Generally in favour of enlarging the pool.

- **Staff Open House:**
The majority (~two-thirds) supported the enlargement of the pool.

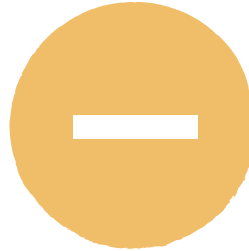
SUMMARY OF RESPONSES

You also provided some comments to accompany your level of agreement.



AGREE

- A second facility like the Kinsmen Aquatic Centre is needed to accommodate swim meets.
 - There is too much risk relying on Kinsmen Aquatic Centre pool as the only competitive training venue.
- Enhancing the pool would provide a great deal of flexibility for activities and programs.
- As a “top notch” facility, the Lewis Farm’s facility should have the best amenities.
- The larger pool would support training and competitions.
- The 53m pool would contribute to sport tourism.
- A 25m pool can get crowded.
- The west end is growing and there will be a future need for it.
- A facility with a 53m pool can support City bids for national and international events.



NEITHER

- Larger pool could provide more opportunity for families.
- The need for the larger pool is not clear.



DISAGREE

- Instead of expanding the pool add other elements (e.g. indoor soccer, indoor skate park).
- The pool enhancement to 53m would not support large competitions.
- Cost is high for only a few hours of 50m time (versus two 25m pools created by the bulkhead).
- 53m pool would only be used by a small number of people; a 25m pool will serve the needs of the public.
- Lewis Farms Facility is a community recreation centre and a 53m pool does not fit with this concept.
- Several 50m pools exist in Edmonton now so the enhanced pool is not needed.

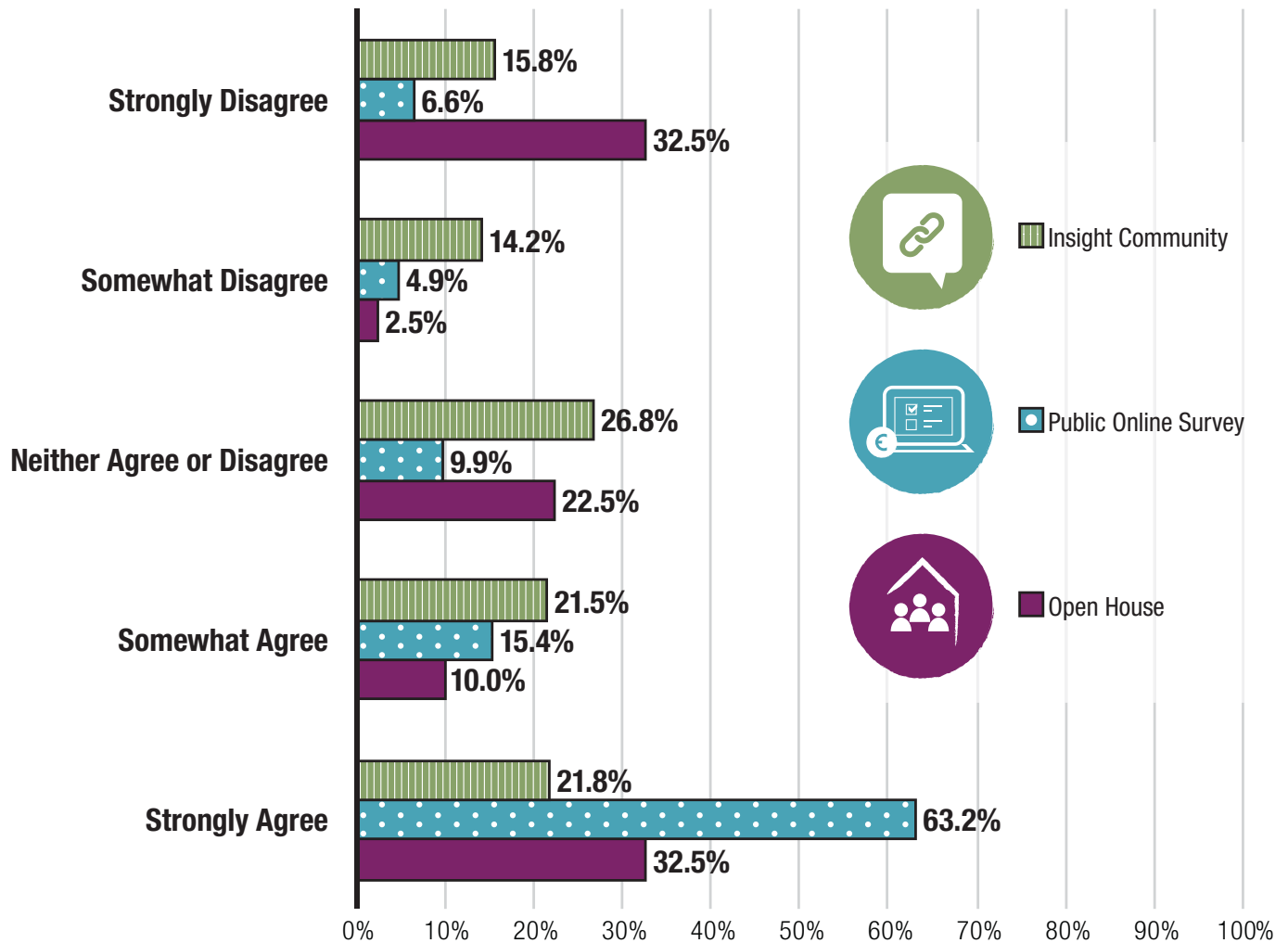
WHAT ARE THE TAKE-AWAYS?

- Generally support was expressed to enhance the 25m pool to a 53m pool.
- Some concerns were expressed about trade-offs with the enhancement of the pool.
- Others questioned the need for a larger pool.

7.5 & 10M DIVE PLATFORM FEEDBACK

City Council requested that the possible addition of a 7.5m & 10m dive platform to the facility be explored. The current facility concept includes a 5m dive platform. The high dive platform would require a deeper basin and the general public would not be permitted to use the 7.5m & 10m platforms. We asked you to indicate your level of support for the addition of the 7.5m & 10m dive platform.

I SUPPORT ADDING THE 7.5M & 10M DIVE PLATFORM TO THE AQUATIC CENTRE



- User Group Committee:**
Generally in favour of adding the dive platform.

- Staff Open House:**
The majority (~two-thirds) disagreed with the addition of the dive platform.

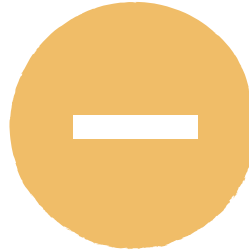
SUMMARY OF RESPONSES

You also provided some comments to accompany your level of agreement.



AGREE

- There is a need for two of these diving facilities in Edmonton (beyond the Kinsmen Aquatic Centre).
 - A growing city has a need for more than one dive facility.
- There are benefits to the City by providing facilities for competitive athletics.
 - A diving centre will help attract and retain athletes.
- Including the diving platform is part of providing a complete aquatics training centre.
- Adding the dive platform will provide different opportunities for youth beyond more traditional activities.
- It is more cost effective to include now rather than later in the facility.
- As a top-tier city, Edmonton needs the amenity.
- Currently opportunities for this activity are limited in Edmonton.



NEITHER

- The need for the facility is unclear.
- The public cannot use the dive platform.



DISAGREE

- There are small number of users as it is not available to the general public.
- The need for this facility is unknown.
- A dive platform already exists at Kinsmen Aquatic Centre.
- This is not an amenity found in community recreation centre which is what this facility is.

WHAT ARE THE TAKE-AWAYS?

- Public online survey respondents offered strong support to the addition of the 7.5m & 10m dive platform. There was general support for the amenity in the user group committee session. The responses from the other consultation mechanisms were less conclusive.
- Those who supported the inclusion commented on the need for a second venue in Edmonton.
- Those who were not supportive wondered about the need for the facility. Others commented that the platform will not be used by the general public.

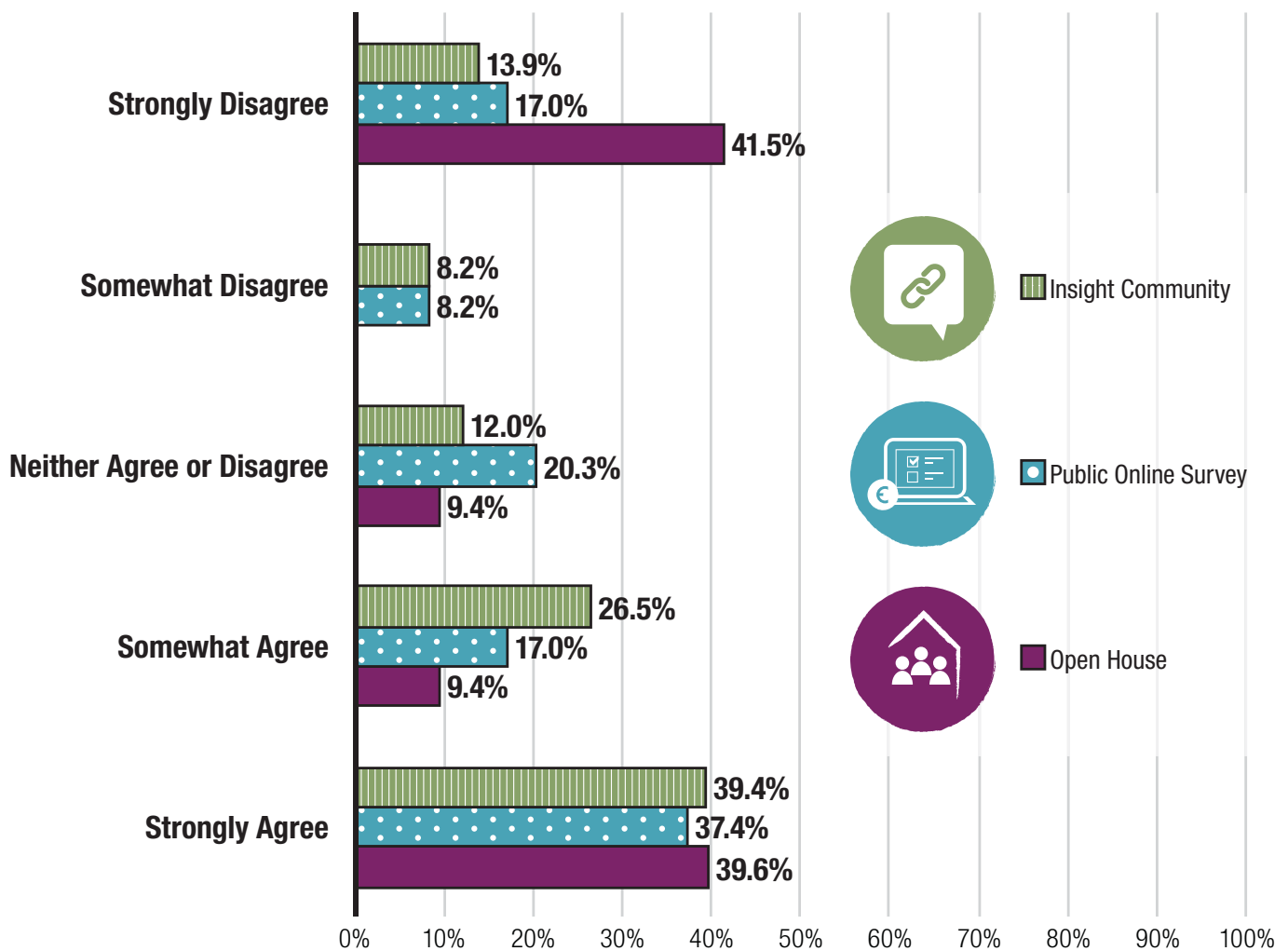
UNIVERSAL CHANGE ROOMS FEEDBACK

The City of Edmonton is considering including universal change rooms in the aquatics areas of the Lewis Farms facility. Typically, universal change rooms involve the following:

- All genders use the same change room, but changing occurs in separate, completely enclosed change stalls.
- Washrooms and showers are either entirely separate or accessible by gender.
- Lockers serve the entire change room.

Consultation participants were asked to indicate their levels of support for including universal change rooms in the aquatics area.

I SUPPORT INCLUDING UNIVERSAL CHANGE ROOMS IN THE AQUATIC AREA IN THE LEWIS FARMS FACILITY.



• **User Group Committee:**
Generally in favour of including the universal change rooms.

• **Staff Open House:**
Unanimous support to include universal change rooms.

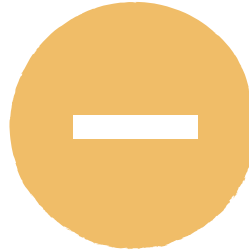
SUMMARY OF RESPONSES

You also provided some comments to accompany your level of agreement.



AGREE

- Universal change rooms are inclusive and they remove issues around gender.
- It is a good option for families.
- These make better use of space than gender-specific change rooms.
- There needs to be a sufficient number of stalls.
- For this to work, there needs to be adequate privacy and public education. Effective communication is needed.
- Universal change rooms avoid duplication and are more efficient for use of space and staffing.
- These change rooms work elsewhere and are more secure than gender-specific change rooms.
- Having all people use the same change room may not be safe.
- Gender-specific change rooms are still needed.
- These change rooms provide privacy for everyone.
- Universal change rooms would better accommodate high volumes of users of a single gender—it will be a larger space than a gender-specific change room.
- Some ethnic and religious groups may not accept universal change rooms.



NEITHER

- Universal change rooms are becoming the norm but keep gender-specific too.
- There needs to be an education and training component to accompany the introduction of universal change rooms.
- Separate change stalls would create a problem with volume.
- Cost would be higher than for gender-specific.
- Not a great need to move from gender-specific change rooms.



DISAGREE

- Privacy, safety, and security concerns are real with universal change rooms.
- There is a need for more information about universal change rooms.
- Gender-specific change rooms need to be available.
- The current system works and does not need to be changed.
- Universal change rooms are more costly to provide than gender-specific change rooms.
- Some people may not be comfortable with this type of change facility.
- Family change rooms work and could serve this purpose.
- The ability to handle large volumes of people with bottlenecks created as people wait for individual stalls is questionable.

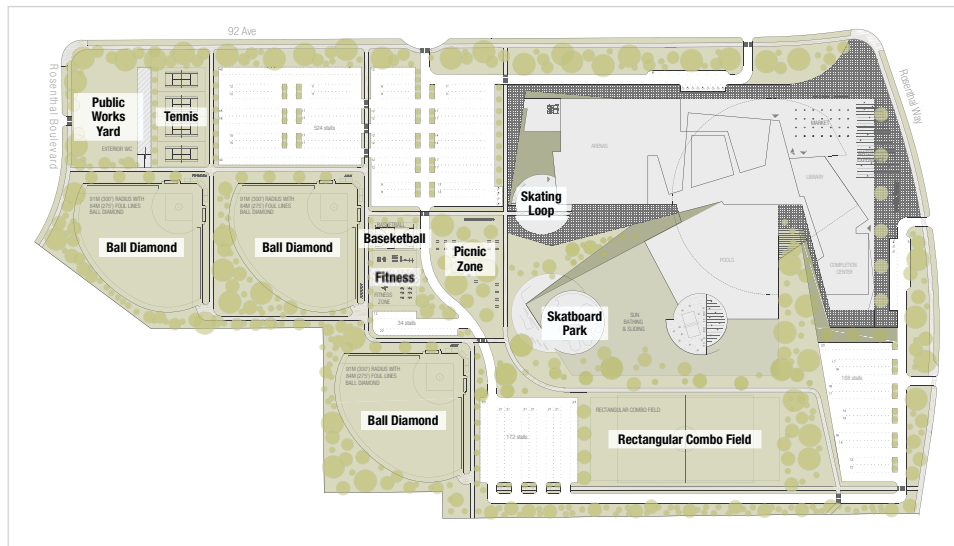
WHAT ARE THE TAKE-AWAYS?

- Support for inclusion of universal change rooms was very divided, particularly amongst respondents of the public open house.
- More information is needed regarding the specifics of universal change rooms set up and use.
 - Questions were raised regarding the availability of gender-specific change rooms even if universal change rooms were to be included in the facility.
- Concerns were expressed about privacy and security.
- The City should continue to explore the potential of inclusion of universal change rooms.

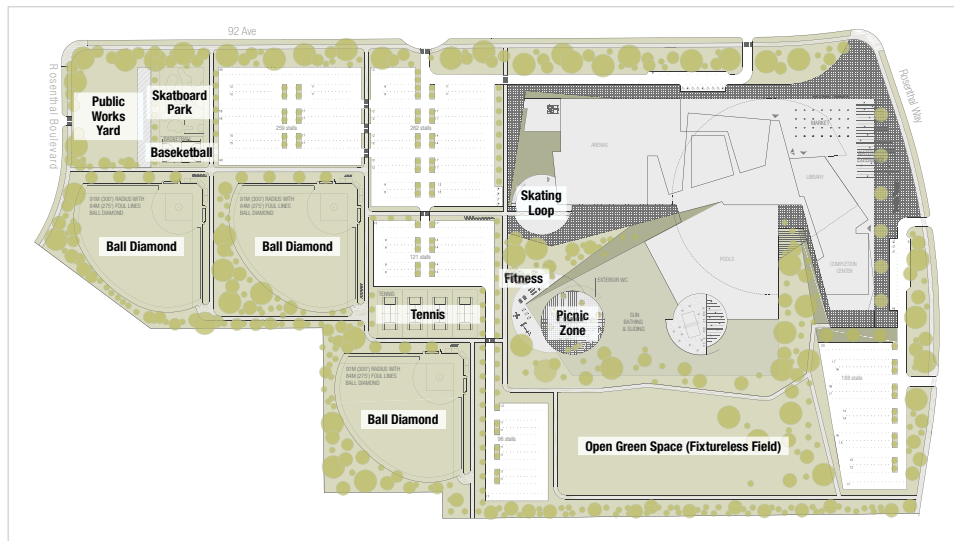
SITE PLAN FEEDBACK

The following site concepts were presented throughout the engagement activities. The concepts show the spaces included in the facility as well as their relationship to each other. There are two different site concepts. We asked you to provide feedback on the site concepts by identifying what you liked, didn't like, and/or wanted to change on the site concepts.

SITE PLAN A



SITE PLAN B



SUMMARY OF FEEDBACK



PUBLIC OPEN HOUSE

LIKE

- Prefer Option A to Option B.
- Internally connected parking.
- Outdoor gym, fitness area, and tennis courts.
- Green space and picnic area; rectangular field.

CHANGE

- Water feature at the front entry needs to be moved away from street.
- Playground is needed.
- A transit centre is needed on-site.

DISLIKE

- Water experience at front entry is too close to road.
- A transit centre at the facility is needed.
- Combine smaller parking lots into a larger lot.



PUBLIC ONLINE SURVEY

LIKE

- Internal connection of the parking lots.
- Rectangular field.
- Variety of activity spaces.
- Outdoor fitness area; tennis courts.
- Large picnic area (option A).
- Skate park: best location was split between near the building and far away.
- Parking closer to building (option B).

CHANGE

- Need for ample parking.
- Need adequate drop-off and pick-up zones.
- Number of ball diamonds exceeds need (could use space for parking).

DISLIKE

- Too many ball diamonds.
- Skate park: away from the facility; near picnic area (some comments that it is not needed).
- Parking is disjointed.
- Open greenspace should be a rectangular field.
- Entrances are a long way from parking lots.



USER GROUP COMMITTEE

LIKE

- Skate park close to the building. Basketball courts close to building.
- Separate entrance to the arena.
- Tennis away from building.
- Generally the site needs to be well lit.
- Internal road connecting the parking lot.

CHANGE

- Parking needs to be close to amenities. Ensure there are drop-offs: particularly for arena users.
- Ball diamonds too close to parking: possible damage.
- Front entrance may entice people to park in the community.



INSIGHT COMMUNITY

LIKE

- Open fixtureless green space and rectangular field.
- Outdoor washrooms; outdoor fitness.
- Internal road connecting parking (some preferred on internal connection); need for adequate parking.
- Space for a variety of activities.
- Three ball diamonds.
- Need for adequate parking.
- Group spontaneous space together and structured space together.
- Skate park: near basketball court; away from the building. Spray park near building.

CHANGE

- In Concept A group skate park, basketball, and fitness, Picnic will be grouped with green space and spray park.
- Fewer ball diamonds and more soccer fields.
- Include some unmanicured space.
- Consider washroom needs of outside users.
- Additional entrances and exits to the parking would minimize traffic bottlenecks. Ample parking is needed but consider non-motorized access.

DISLIKE

- No need for three ball diamonds (seems to be need for soccer).
- Skate park: is it needed? Location concerns: near the building; away from building.
- Parking is far from building.
- Site plan caters to vehicular traffic (consider non-motorized transportation).
- How much will these areas be used: outdoor fitness, basketball courts, tennis courts, picnic area.



CITY STAFF OPEN HOUSE

LIKE

- Outdoor washrooms at park yard.
- Skate park: close to facility; away from building.
- Unstructured green space.
- Outdoor fitness.
- Internal connected parking.

CHANGE

- Connect site to bike lanes and walkways.
- Ensure appropriate support amenities are in place for special events (e.g. adequate power, fire hydrants).
- Ball diamonds facing residential areas may pose safety issues (install barriers).
- Operations yard needs two points to access/exit.

DISLIKE

- Skating loop: will it get used? Consider maintenance of the space when configuring it.
- Skate park should be closer to facility.

WHAT ARE THE TAKE-AWAYS?

- There was a diversity of opinion regarding the large green space. Some favoured the development of a rectangular field others preferred the green space without fixtures.
- The variety of spaces available to accommodate active, leisure, structured, and spontaneous activities was applauded.
- Inclusion of the skate park was strongly supported but its location was the subject of much different opinion.
 - Some felt strongly to position it away from the building but along the roadway to ensure good visibility. Others felt the skate park should be near the building. Siting the park near to the basketball court was noted as a good idea however.
- Generally the notion of an interior road connecting all the parking was favoured.
 - There were many comments about the need to ensure adequate parking. Connection with public transit was championed as well.
- Many commented that the building entrances seemed to be a long walk from the parking lot. Ensure there are adequate drop-off and pick-up zones.
- A number of people spoke about the need for an outdoor playground. This was emphasized as a complementary amenity to an outdoor spray park.

OPEN HOUSE FEEDBACK

Overall, the majority of people that went to the open house felt that it was a positive event and we did a good job. Here are some of our learnings from the event and what we plan to improve for our next phase of consultation, Setting the Direction.



WHAT WE DECIDED

Based on your review of the concept options and internal discussions, we made some decisions about what to include in the facility and park design moving forward. Some of your feedback is not included because it is too early for the detail level of this phase, but it will not be forgotten as we move forward in the design of the project. This list provides a summary of the decisions we made and why.



OPEN GREEN SPACE

You said flexibility of open space in the park for uses such as fixtureless fields, picnicking, community events, and informal outdoor active recreational interests was important to you. During Exploring Options, we heard the same support for Open Green Space that we heard from Sharing Ideas so it is included in the draft schematic design.



UNIVERSAL CHANGE ROOMS

We asked your opinion about including universal change rooms in the aquatic centre. Most of you support including universal change rooms as long as gender specific rooms are still provided. Based on your feedback we will be including a large universal change room as well as smaller male and female change rooms. You told us that dealing with large volumes of users and ensuring privacy were important. We will design these spaces with that in mind.



OUTDOOR SKATEBOARD PARK

We heard support for both proposed locations. While many of you liked the skateboard park further away from the recreation centre with views from the road, we decided to put the skateboard park closer to the recreation centre to provide safety and supervision. This location helps recreation centre staff deal with potential injuries and places the skateboard park closer to public washrooms and drinking water. A central location creates a community feel that supports users of all ages.



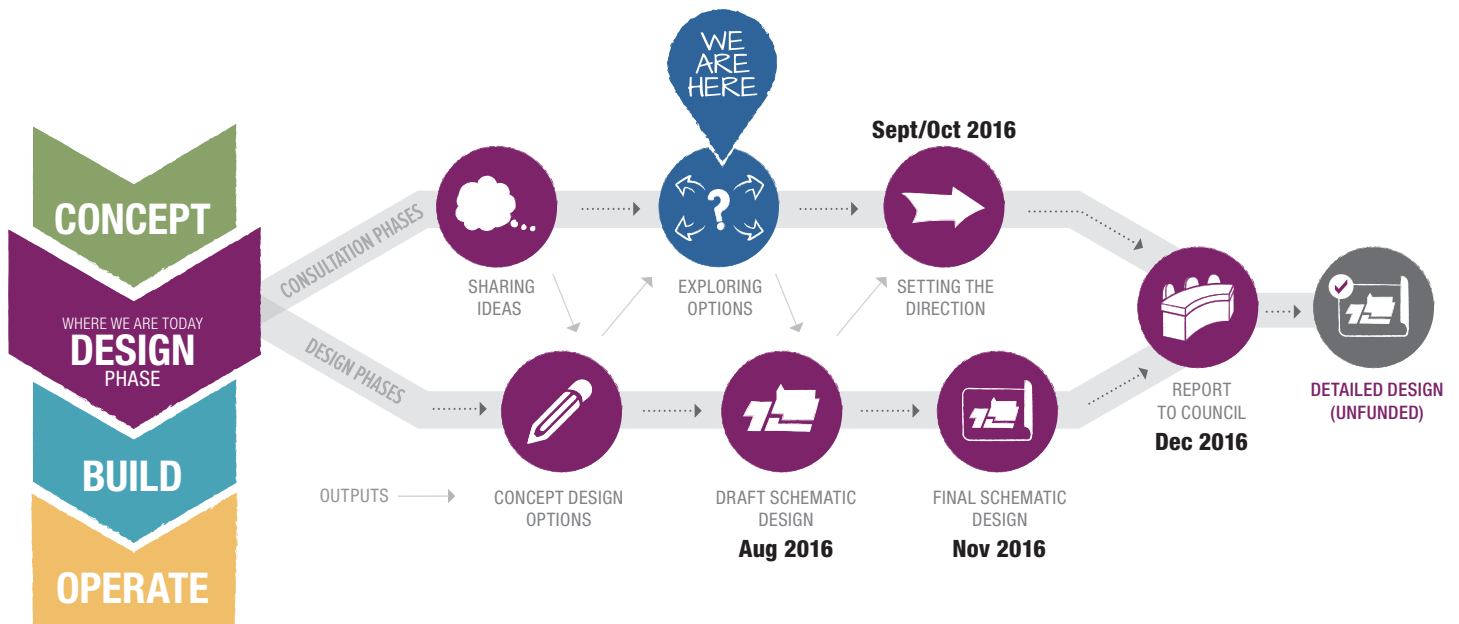
INDOOR BOARDED SOCCER

During the Exploring Options consultation there was a lot of confusion about the ranking of soccer. Many of you said we didn't include indoor boarded soccer in the facility program even though you felt it was supported. During Sharing Ideas we asked how you would use the gymnasium. Your feedback showed that Soccer/ Futsal ranked high as a gymnasium activity and indoor boarded soccer ranked low. To match the overall feedback, the gymnasium will be designed to support soccer/futsal.

WHAT'S NEXT

Our next step is to provide all this information to the architect to develop the schematic design.

Your next opportunity to get involved is at the Setting the Direction open house in the fall of 2016.



CONCEPT DESIGN OPTIONS provide the next layer of detail to the high-level diagram. This includes things like: the size, shape, and location of the facility, parking, sports fields, and pathways.

SCHEMATIC DESIGN adds more details such as: the size and shape of rooms, the locations of the doors and lighting, parking stalls, number of sports fields, and pathway size.

HERE'S HOW YOU
CAN STAY INFORMED
AND PARTICIPATE IN
THE NEXT PHASE OF
CONSULTATION:



[SIGN UP FOR EMAIL UPDATES](#)



[CHECK OUT OUR WEBSITE](#)



[FACEBOOK.COM/CITY_OF_EDMONTON](https://www.facebook.com/city_of_edmonton)



[TWITTER @CITY_OF_EDMONTON](https://twitter.com/city_of_edmonton)