

Concept Planning Study Northwest LRT (NAIT to NW City Limits) Open House – April 3, 2013



Public Meeting Agenda

- Meeting purpose
- LRT planning: project background
- Refined concept plan
- Next steps
- Questions & clarifications
- Leave your comments



Meeting Purpose

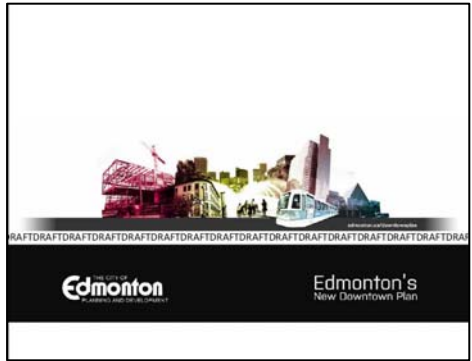
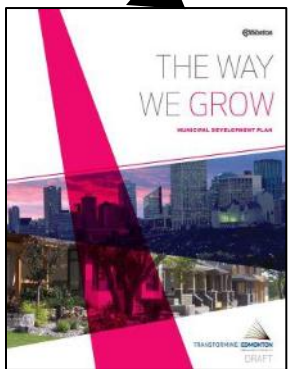
Our Commitment to You

- To provide you with a clear overview of the recommended NW LRT concept plan
- Make you an informed commenter
- Provide your comments to City Council
- Answer questions and clarify information so you are as informed as possible moving forward to the City Council review

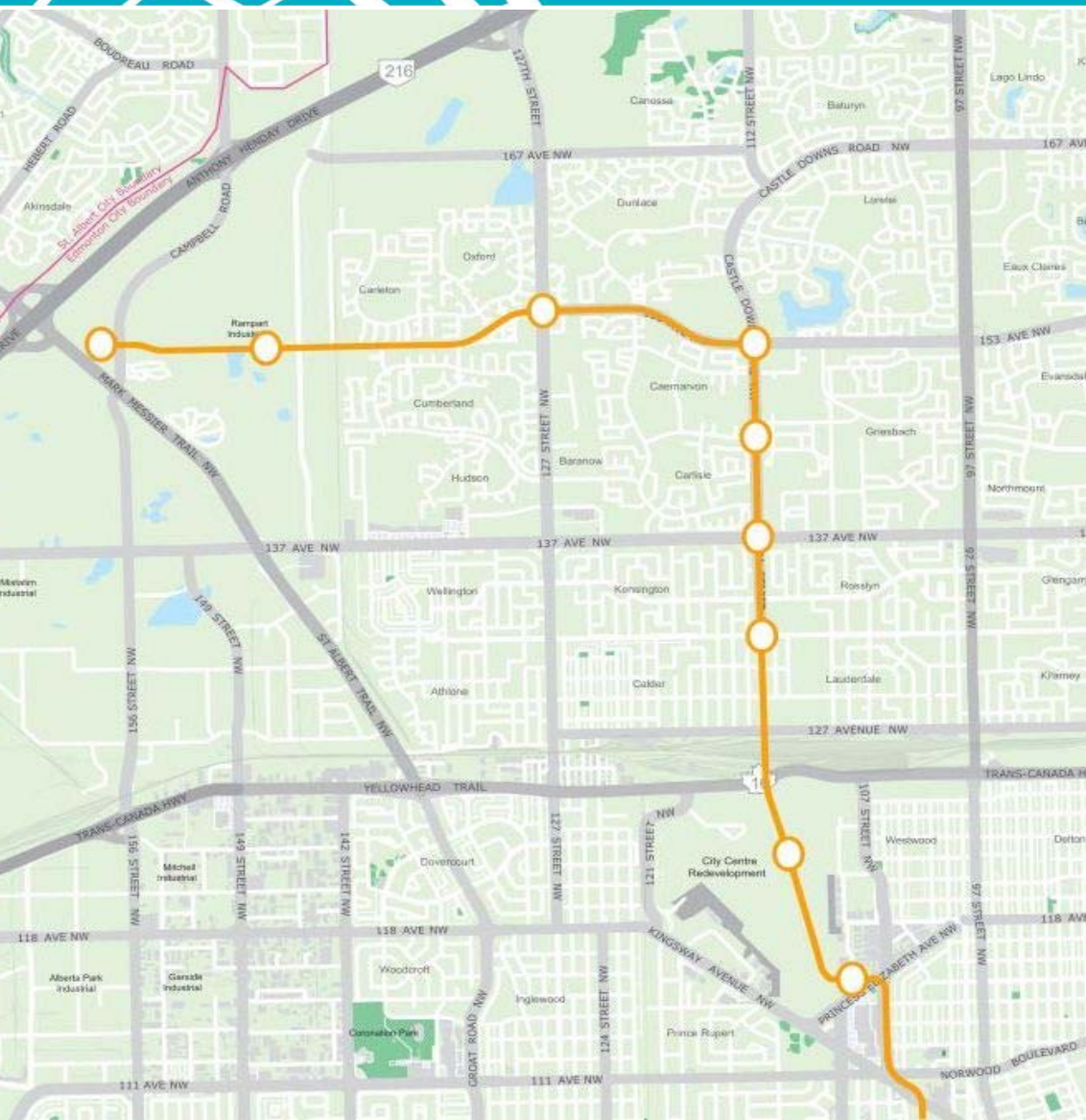
LRT PLANNING: PROJECT BACKGROUND

Basis for LRT

“The City will pursue expansion of the LRT to all sectors of the city with a goal to increase transit ridership and transit mode split, and spur the development of compact, urban communities.”



NW LRT Approved Corridor



- Corridor fixed:
 - Approved by City Council, July 2010

NW LRT Project Purpose

- Builds off of policy:
 - Purpose: Following the approved corridor, develop a Concept Plan to extend the existing LRT system from NAIT to Campbell Road (future park-and-ride) to serve the developed, redeveloping and new neighbourhoods in the City's northwest.



NW LRT Facts

- Partner with City of St. Albert
- NAIT to northwest City limits
- 11 km
- Proposed 9 stations
- Existing Edmonton style high floor vehicle (extension of existing line)
- Anticipated travel time from Campbell Road
 - 30 minutes to downtown
 - 40 minutes to University
- Urban style design

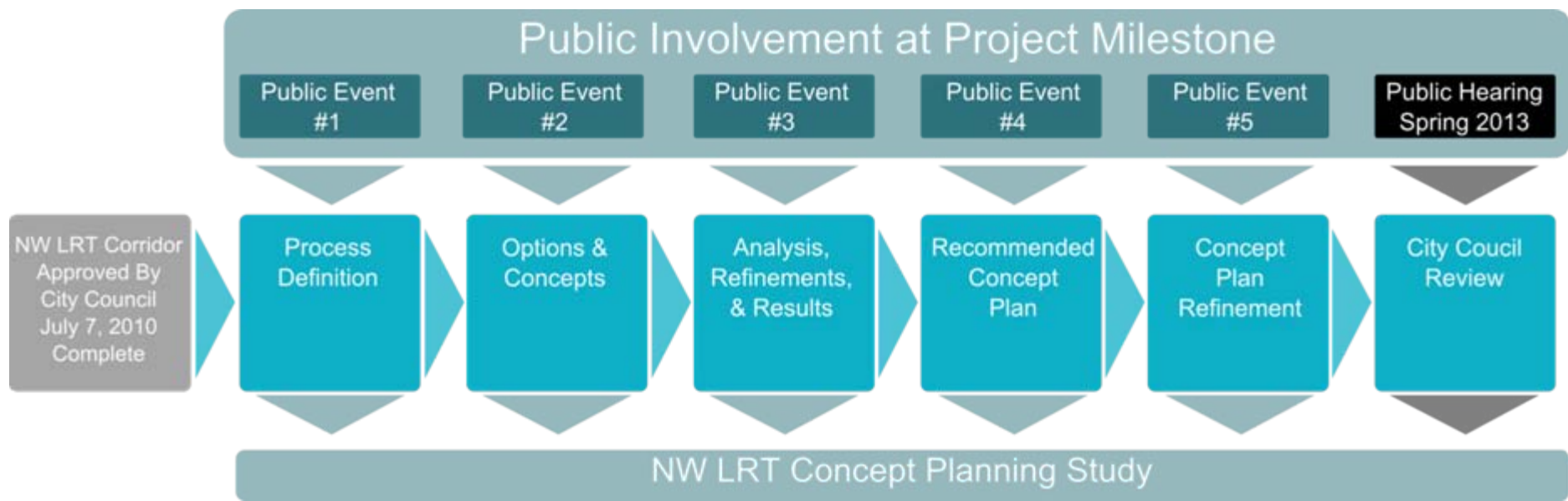


Where We Are Now

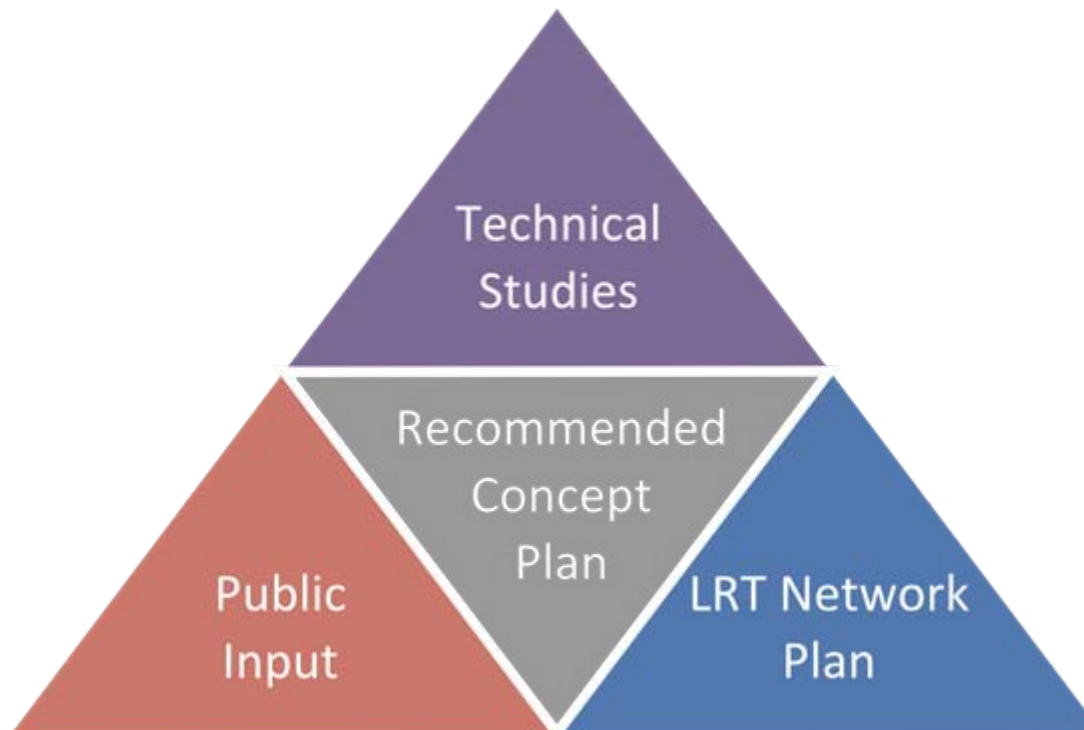
- 2012 Concept Planning Study
 - Defines location of tracks
 - Defines stations
 - Identifies property requirements
 - Considers auto access/traffic
 - Considers cyclists, pedestrians & bus users
 - Provides information to begin preliminary engineering



Project Process



Three components impact the decisions about the NW LRT stations and track locations



Revised Concept Plan

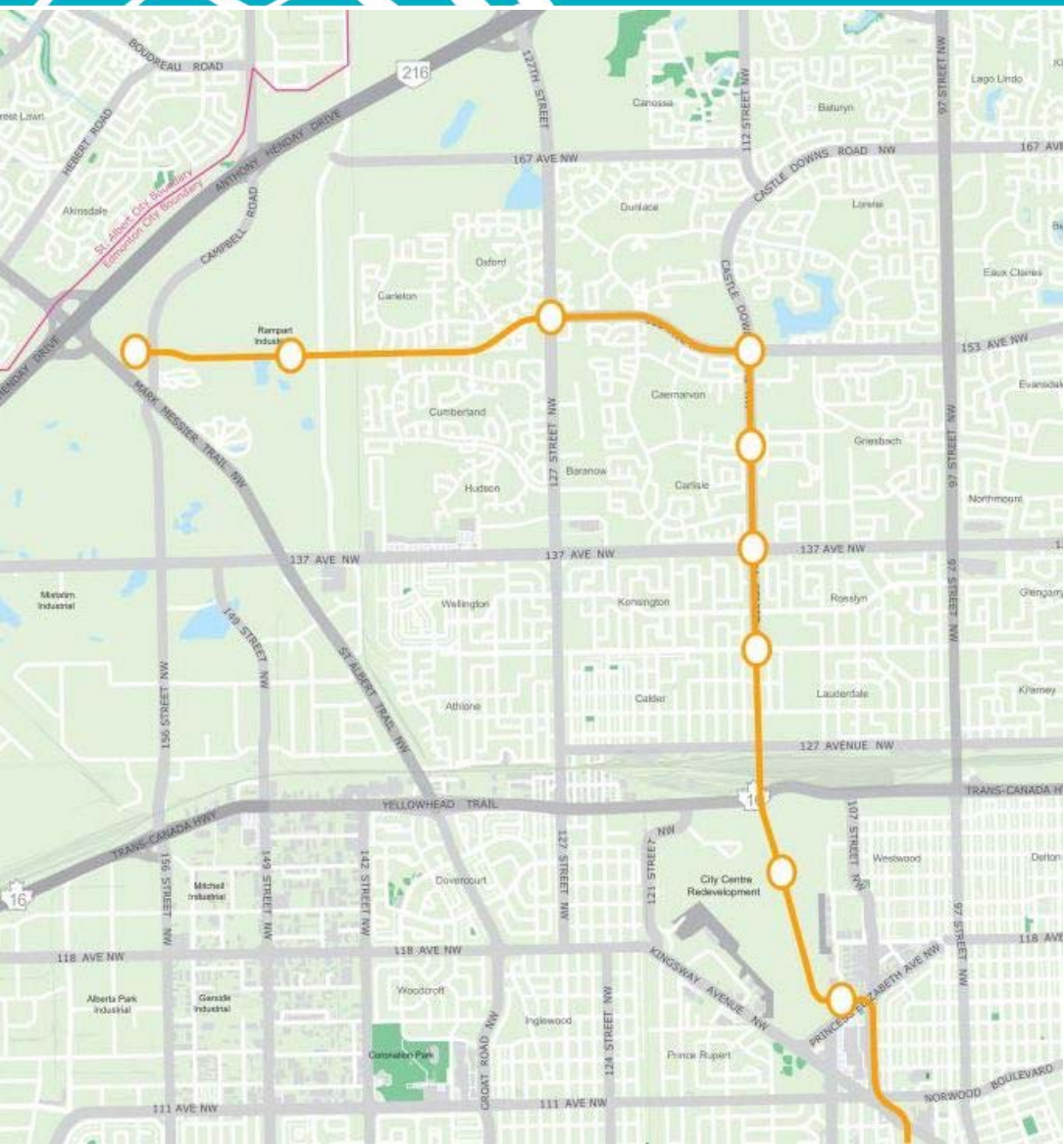
153 Avenue

- Revised concept developed for 153 Avenue west of Castle Downs Station to provide for future design development and operational flexibility
- Gates and barriers are shown on the plans and their use will be reviewed in future design development



RECOMMENDED CONCEPT PLAN REVIEW

NW LRT Approved Corridor



- Corridor fixed:
 - Approved by City Council, July 2010

Castle Downs

Revised access and new traffic signal for Castle Downs Spray Park

Supports future school development & connects to activity centres

New access to Castle Downs YMCA



Pedestrian crossings provided

Transit Centre

Removal of channelized right turns lanes to improve pedestrian crossing

Retained traffic lanes at intersection



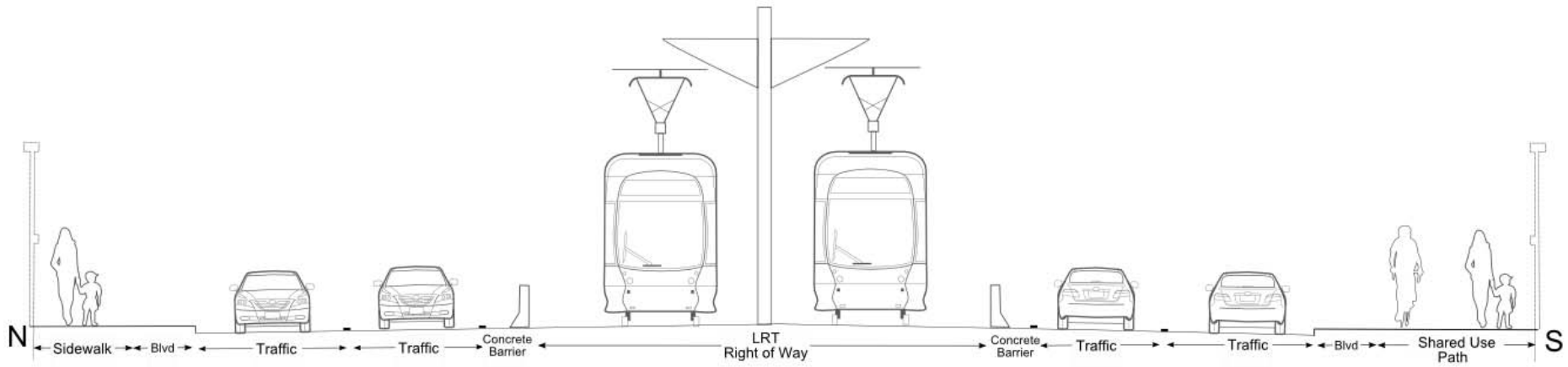
Shared use path & cycle facilities

Gates & bells at intersection

Kiss & Ride

Retained access

Typical Cross-section



127 Street

Gates & bells at intersection

Opportunity for bus interchange on 127 St

Potential noise attenuation due to closer proximity of traffic lanes



Retained access

Connection to activity centres

Link to existing shared use path

Pedestrian access to LRT

Opportunity to create pedestrian connections to community

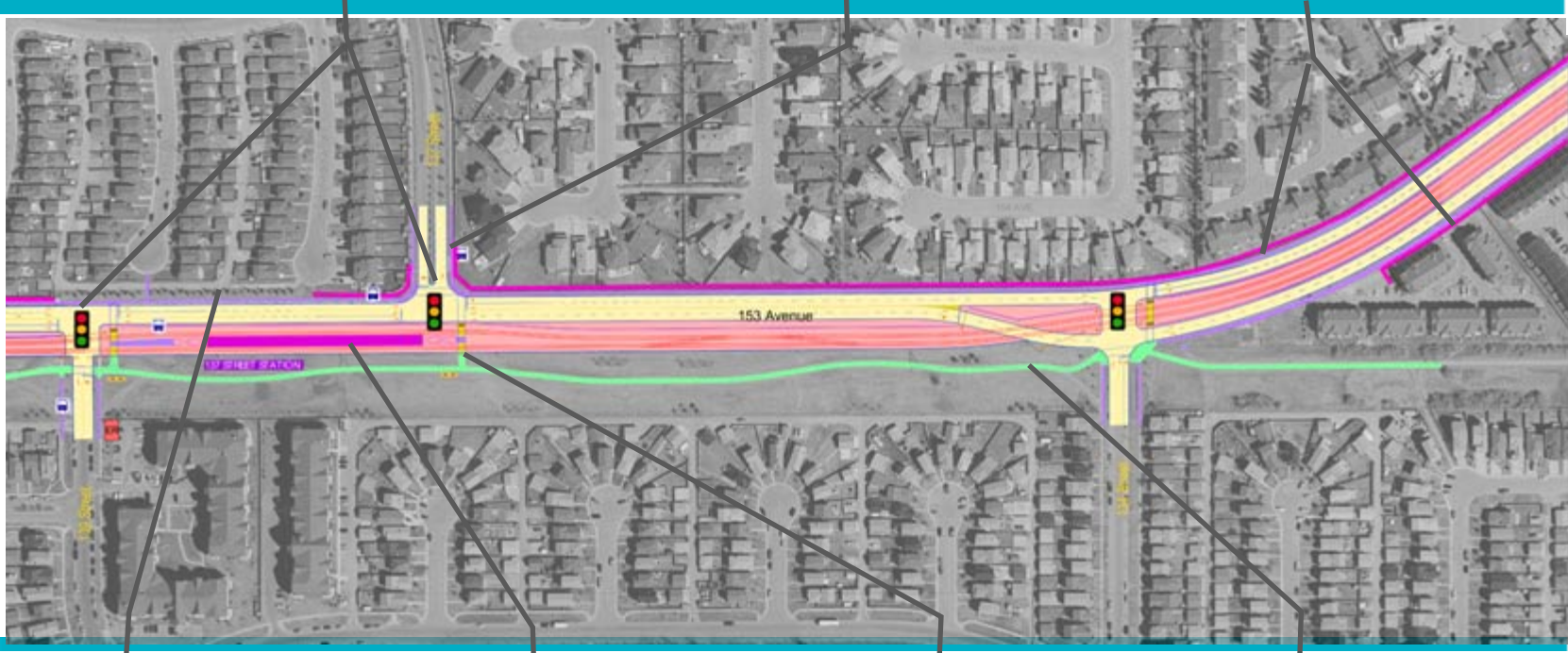


137 Street

Gates and bells at intersections

Opportunity for bus interchange on 137 St and 139 St

Potential noise attenuation due to closer proximity of traffic lanes



No property impacts

Station moved slightly east position provides equal access to surrounding communities

Pedestrian & cyclist access to transit

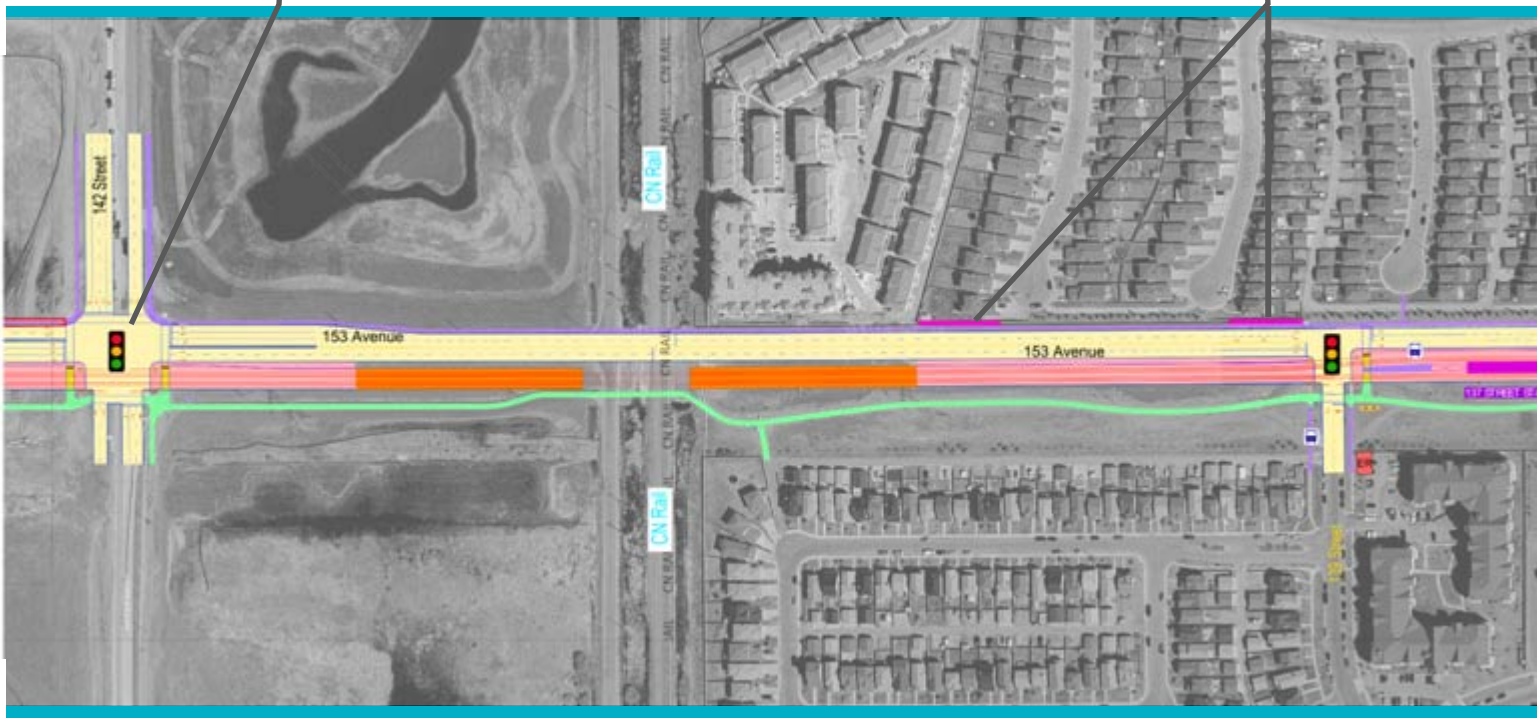
Link to existing shared use path



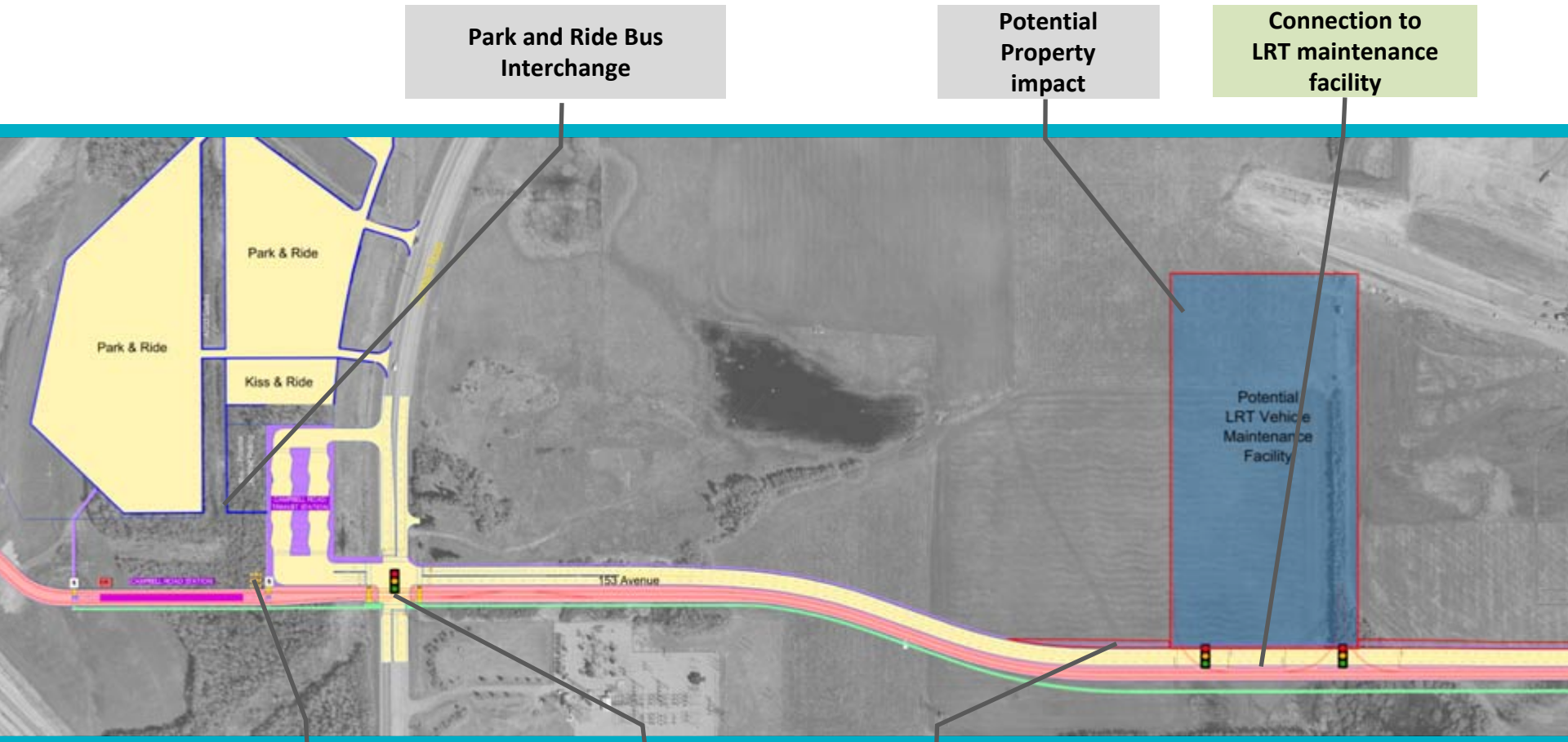
142 Street

Gates and bells at intersections

Potential noise attenuation due to closer proximity of traffic lanes



Campbell Road



Park and Ride Bus Interchange

Potential Property impact

Connection to LRT maintenance facility

Pedestrian & cyclist access to transit

Gates and bells at intersections

Property impact



Next Steps

- Comments received tonight will be included in a report to Council
- Report and Recommended Concept Plan will be presented to City Council's Transportation Committee (TC) at a public hearing on:
 - May 1st, 2013 at City Hall
- Register to speak: Edmonton.ca/meetings or call 780.496.8178

Multiple Ways to Provide Input

- Comment forms
- Roll plot & board 'notes'
- Email or mail after the meeting
 - Comment period closes:
April 8th, 2013



Thank You!

- Five public input opportunities (April, June, September, December 2012 and April 2013)
- High level of community participation
- Thank you—your input helped shape the NW LRT Recommended Concept Plan

www.edmonton.ca/lrtprojects