

The Edmonton logo is located in the top right corner of the page. It consists of the word "Edmonton" in a white, sans-serif font, set against a dark blue rectangular background. The background of the entire page is a photograph of a lush green field in the foreground, with a dense forest of tall trees in the middle ground, and a blue sky with wispy white clouds in the upper portion.

Edmonton

OLESKIW

RIVER VALLEY PARK

MASTER PLAN

What We Heard Report
Phase 2: Vision, Principles & Identity
September 2017

Project Overview

The Oleskiw River Valley Park Master Plan project is an opportunity for Edmontonians to work with the City of Edmonton to develop a 25-year vision and guiding principles for the park. As an important link for people and wildlife in the city's green space network, the Oleskiw River Valley Park is an essential outdoor place for Edmontonians to relax, learn, explore and reconnect to the North Saskatchewan River Valley.

The Oleskiw River Valley Park is an important link in Edmonton's River Valley park network. With the construction of a new multi-use trail and the Terwillegar Park Footbridge, the park area is expected to experience a greater intensity of use over the next few years. As a result, the City of Edmonton has identified the need for this first formal planning process for the park: a Master Plan to guide and coordinate future development and activity.

The area of land within the project boundaries does not currently have a plan guiding its development, nor does it have an official name. The City has started a Master Plan process to establish a 25-year vision and management plan for the park area. As part of the 10-Year Capital Investment Agenda, The River Valley Park Renewal program has identified Oleskiw River Valley Park Master Plan as a key project that will direct investment for the park.

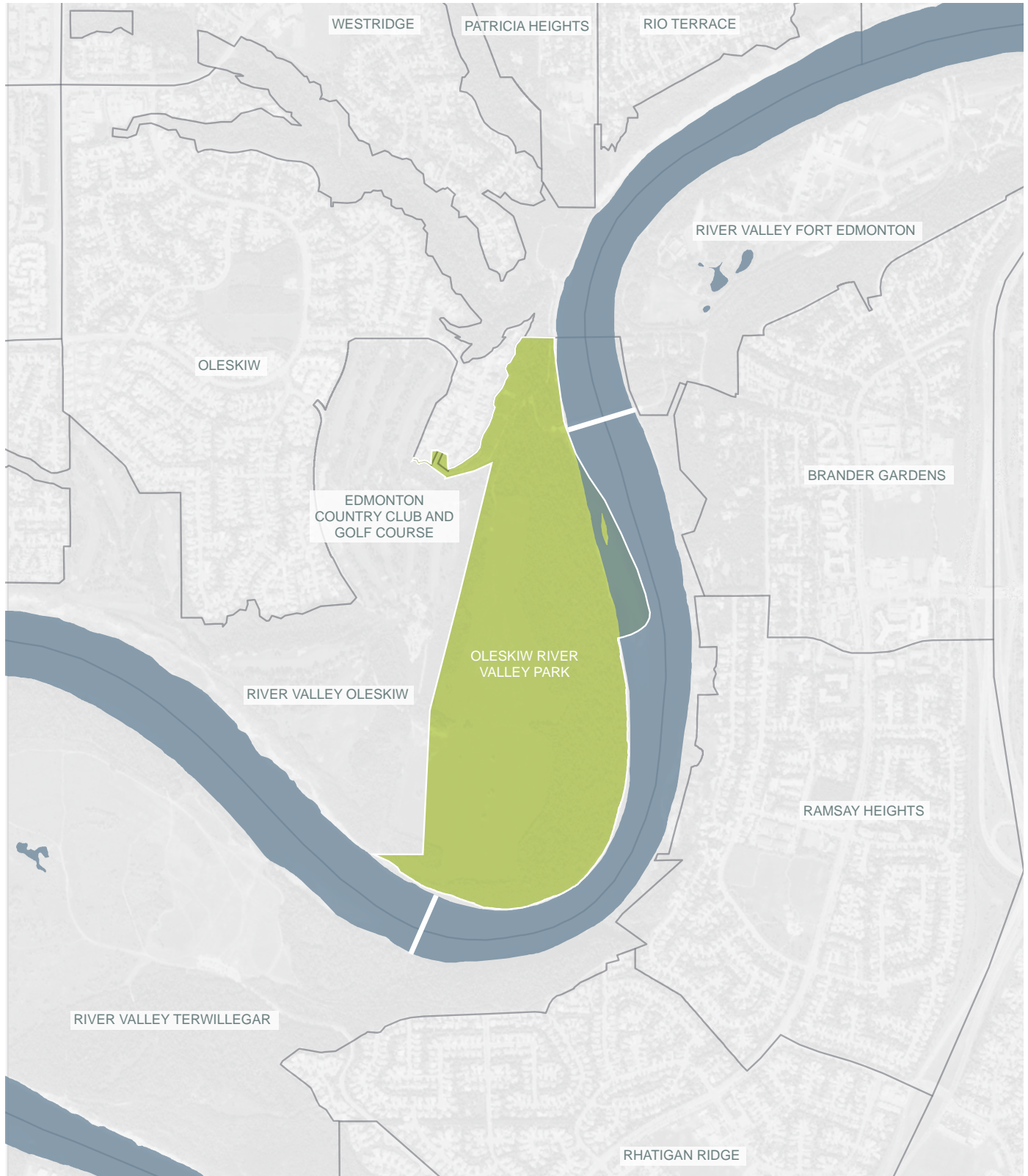
Once known as Wolf Willow Farm, the project area is about 82 hectares in size and located in the west end of the city, south of the Fort Edmonton Footbridge and adjacent to the Edmonton Golf and Country Club. The elevation drops 45 metres from the top of bank on the west side of the park area to the river shoreline on the east. No public vehicle entry into the project area is currently available. The Terwillegar Park Footbridge and West End Trails projects, which include the new asphalt, shared-use pathway that runs through the project area, are expected to increase the number of visitors into the Oleskiw River Valley Park.

Through community consultation that reaches a broad audience using a variety of engagement tools and techniques, the City will develop a vision for Oleskiw River Valley Park and establish guiding principles that will form the basis of the Master Plan.

This report summarizes What We Heard from the second round of public engagement for the Oleskiw River Valley Park Master Plan, and outlines the following:

- » The Master Plan process,
- » The phases of public engagement
- » Our understanding of the environmental sensitivities within the park,
- » Key considerations for different park areas, and
- » Feedback that was received during the second phase of engagement: **Vision, Principles & Identity.**

Oleskiw River Valley Park Context



The Master Plan Process

Oleskiw River Valley Park offers an escape into nature that people love and enjoy. The park is a natural gem in Edmonton in part because of forward-looking policy, planning and community involvement. This type of planning can be traced all the way back to the recommendations of Frederick G. Todd in 1907. With the incredible growth and changing demographics that will occur around the park in the coming years, there is a need to look ahead to create a vision that protects the park while reflecting the needs of citizens and what they would like to see in the future.

The River Valley Park Renewal Program identifies a long-term strategic approach to renew parks located in the River Valley. The program is initiated by key drivers such as city policies, changing demographics, demand, recreational needs and aging infrastructure. Park renewal within the River Valley is based on an analysis of the physical condition and functionality of park elements as well as the ability to meet existing (and future) capacity. Since the Oleskiw River Valley Park has never had a comprehensive park plan, the River Valley Park Renewal Program has identified it as a priority considering Edmonton's future growth and potential increased use.

The Master Plan for Oleskiw River Valley Park will establish a vision and management plan for the next 25 years, and build upon existing plans, policies and initiatives while identifying public needs and priorities. It will provide direction for environmental management, as well as recommendations for civic, cultural and recreational uses that are appropriate to the park.

The Master Plan is currently in the CONCEPT Phase of the Park and Facility Development Process. In this phase, public consultation will be critical to informing the Master Plan from now until its completion in Spring 2018. Existing policy, City Administration and public input will inform the process and outcome of the CONCEPT Phase. After the Master Plan is complete, the first phase(s) of implementation of the Master Plan will be evaluated for funding as part of the next budget cycle for 2019 - 2022.

City of Edmonton's Park and Facility Development Process. This project is in the CONCEPT phase.



Oleskiw River Valley Park: Engagement time line



Engagement Plan

An engagement strategy using multiple consultation techniques will facilitate the ability for the public to provide input into the development of the Oleskiw River Valley Park Master Plan. Four phases of public engagement will help us develop a Master Plan for the park that responds to community needs and City priorities.

Policy C513 for Public Involvement is guided by the City of Edmonton's Public Involvement Framework which outlines the strategic approach to be used in all City hosted public involvement processes. As outlined in Policy C513, the City of Edmonton is committed to involving stakeholders and the public in the Master Planning process. During the engagement, Edmontonians will be asked to identify key uses, needs and strategies for the park and participate in an ongoing dialogue about what the Oleskiw River Valley Park might look like in the future. Ecological and infrastructure needs, as well as how this space can support the surrounding neighbourhoods and the larger Edmonton community will be discussed.

The public is invited to be involved in four phases of engagement to help develop the Master Plan for the Oleskiw River Valley Park. Each phase will include internal and external stakeholder sessions, online engagement and public open houses. External stakeholders include interest groups, neighbourhood groups and other organizations who have expressed an interest in being more deeply involved in the Master Plan process. Internal stakeholders are City of Edmonton employees who can provide input or advice on specific aspects of the park.

Online engagement, in the form of surveys, interactive mapping and activities, gives the public an opportunity to provide their input at their convenience. This option is offered to facilitate input from those who are unable to attend in-person sessions and for those who want to provide additional comments. Material shared at public events will also be available online: edmonton.ca/oleskiwparkmasterplan.

PHASE 1: Project Introduction, Inventory & Analysis **August - September 2016**

In Phase 1, the City sought initial feedback on the existing conditions of the project area. We asked the public: what do you like about the park space, why it is important to you and what you want to see in the future?

The first phase of public engagement has closed. Information presented to the public and stakeholders included the project scope and boundaries; key existing features, systems and functions of the park; and the relationship of the Oleskiw River Valley Park Master Plan with parallel projects such as the Southwest Priority 2 Area Ribbon of Green Master Plan and BREATHE: Edmonton's Green Network Strategy.

Public and stakeholder input identified key dreams, desires, issues and themes. This input will inform the development of a park vision, identity and program, as well as one or more concept options.

PHASE 2: Vision, Principles & Identity **June 2017**

In Phase 2, the City looked for the public to help improve their understanding of the opportunities and constraints in the park. These will help to inform the vision. The public and stakeholders were able to provide input on the material presented and were asked to prioritize elements of the vision statement and concept options.

A summary of the feedback we received is contained in the What We Heard section of this report.

We are here



PHASE 3: Concept Options
Fall 2017

The City will be looking for feedback on more developed concepts for the park in Phase 3. Two distinct options will be presented. The refined themes that emerged during Phase 2 will be shared in a What We Heard Report and will be integrated into the concepts.

We will present two variations on proposed activities, features and elements for the park within two concept plans. The public and stakeholders will be asked to choose which option they prefer, and to prioritize the various proposed elements in each.

Feedback will be summarized in a What We Heard report.

PHASE 4: Preferred Concept
Spring 2018

In Phase 4, the City will present a refined concept for the park that integrates the priorities and feedback received in Phase 3.

The public and stakeholders will be provided with the opportunity to give feedback on the preferred concept to help fine-tune the program and its features. This will support the development of a preferred concept that responds to the needs of the community and park users.

Feedback from Phase 4 will be summarized in a What We Heard report. The public will also be provided with information about next steps and how they can stay involved.

Discover

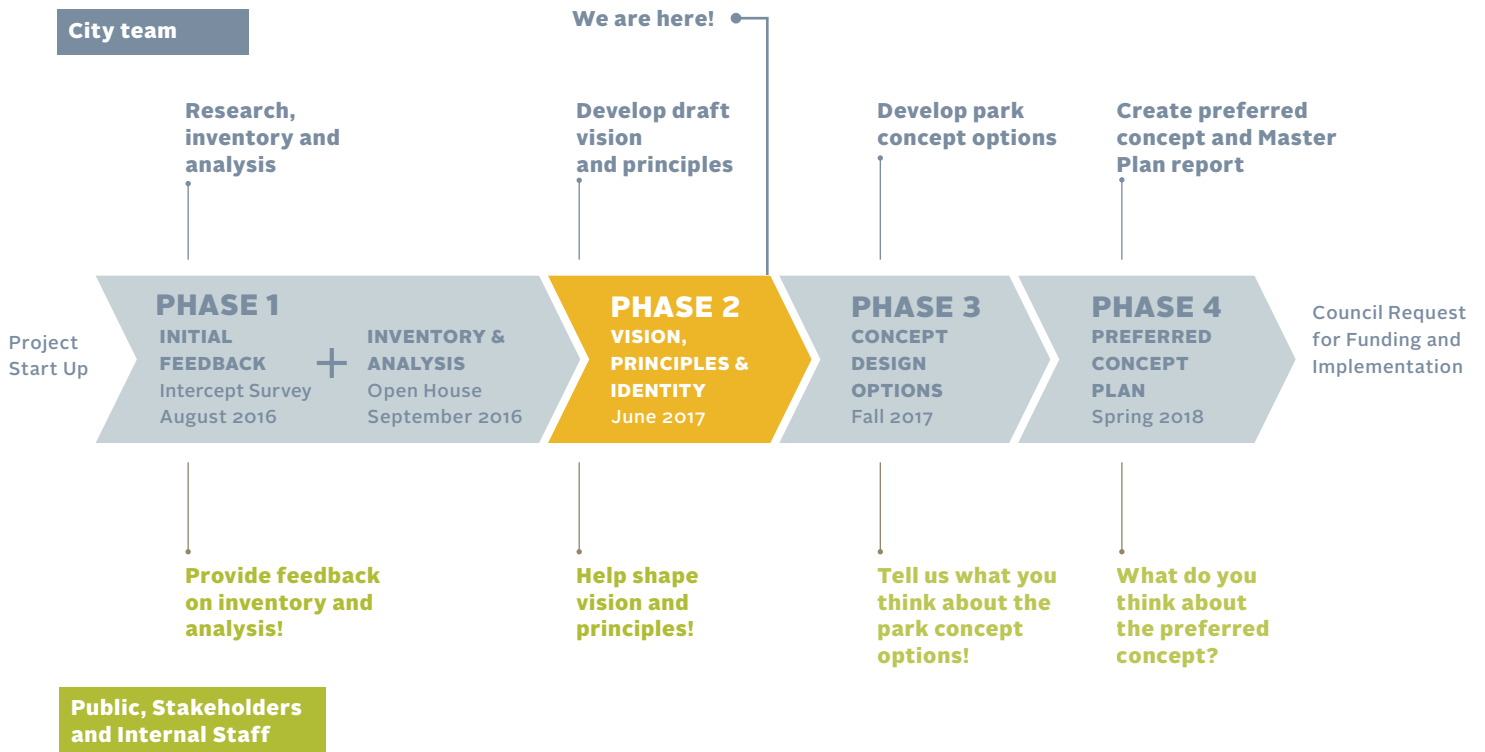
As part of the 10-Year Capital Investment Agenda, The River Valley Park Renewal Program has identified Oleskiw River Valley Park for Master Plan development to direct investment for the park.

Develop

Along with City priorities and technical data, public input will be used at each stage in the process to develop the Master Plan.

Deliver

The goal is to fund the next stages of implementation as part of the 2019–22 budget cycle.



Public Involvement in the Master Plan Process

The City of Edmonton prioritizes public engagement as part of the Master Plan process. It is integral at each stage to help make informed decisions.

Planning Context

The Master Plan for Oleskiw River Valley Park will exist within a framework of environmental and social policy. The direction of the Master Plan, including the activities, amenities and events that will take place in the park, as well as features and their maintenance, will be influenced by the following plans and policies.

City-Wide Plans and Policies

The Ways Strategic Plans:

- » The Way Ahead, 2009-2018
- » The Way We Grow, 2010
- » The Way We Live, 2010
- » The Way We Move, 2010

These are the City of Edmonton's high-level strategic plans that outline how the City will achieve its vision. They help to focus the City's efforts to deliver services and infrastructure that are most important to Edmontonians while managing the opportunities and challenges of our ever-changing city.

- » 10-Year Capital Investment Agenda 2012-2021

Understanding that investment in city infrastructure requires a long-term vision, the City of Edmonton created the 10-Year Capital Investment Agenda to steer city spending. The Agenda is aligned with the goals and priorities of the City's Strategic Plan, The Way Ahead.

Parkland Bylaw (C2202), Consolidated 2003

The Parkland Bylaw defines the uses and activities that are appropriate for parkland in the City of Edmonton. The purpose of the Bylaw is to promote safe, enjoyable and reasonable use of parks and to protect and preserve natural ecosystems in the City.

Edmonton's Urban Parks Management Plan (UPMP), 2006

The UPMP provides strategic direction for the acquisition, design, construction, maintenance, preservation and animation of parks in the City of Edmonton. The Plan has three specific goals:

- » To provide a vision specific to Edmonton's park system
- » To develop strategic direction that will guide decision-making
- » To develop park management instructions that support the vision, service themes and policies and ensure consistency in implementation

Breathe: Edmonton's Green Network Strategy, Under development 2016–2017

Breathe is a transformative strategic plan to support each neighbourhood with an accessible network of parks and open space as the city grows. The main goal of the Green Network Strategy is to plan and sustain a healthy city by encouraging the connection and integration of open space. Breathe will replace and expand on the Urban Parks Management Plan and Natural Connections Strategic Plan.

Environmental Plans & Policies

- » Natural Area Systems Policy (C531), 2007
- » Corporate Tree Management Policy, 2010
- » Urban Forest Management Plan, 2012

These plans and policies provide direction for all natural areas and parkland in Edmonton.

Bicycle Transportation Plan, 1992, Updated in 2009

This plan is integral to creating a bike friendly city and is an important part of the implementation of the Transportation Master Plan, The Way We Move. The plan proposes to expand city-wide bike routes, including increasing the number of marked on-street bike routes, expanding bicycle racks to all transit buses, expanding bicycle parking facilities and increasing education and awareness around city biking. The plan also proposes an improved maintenance and street sweeping/snow clearing schedule.

For the Love of Winter: Strategy for Transforming Edmonton into a World-Leading Winter City, 2012

Developed over the course of several years using a community-led approach, the Winter City Strategy aims to enhance Edmonton's culture, urban design, civic life and economy by embracing the opportunities and challenges that come along with being a Northern capital city. Accompanying the Strategy is an Implementation Plan that provides recommended actions and partners to aid in the implementation of the Strategy throughout the City of Edmonton.

Dogs in Open Spaces Strategy, 2016

The Dogs in Open Spaces Strategy provides planning, design and management recommendations for existing and future off-leash dog areas in the City of Edmonton. It also provides a summary of requirements for Neighbourhood, District and River Valley & Ravine off-leash areas.

River Valley Plans and Policies

Development Setbacks from River Valley/ Ravine Crests (Top of Bank Policy C542), 2010

Accompanied by City procedures, the Top of Bank Policy was updated in 2010 to ensure that private and public property is safe from slope and stability failure and that the River Valley and ravine system is protected from development that may compromise the long term stability of its banks. The policy also helps to ensure that the top of bank portions of the River Valley are accessible to the public and the ravine system remains a natural, ecological and recreational amenity for the people of Edmonton.

North Saskatchewan River Valley Area Redevelopment Plan (Bylaw 7188), 1985, Consolidated 2014

Provides a comprehensive River Valley and Ravine management program to protect the North Saskatchewan River Valley and Ravine System. The primary goal of this bylaw is to ensure the preservation of the natural character and environment of the North Saskatchewan River Valley and its Ravine System while integrating public recreational opportunities within the landscape. It restricts development within the River Valley and defines features that should be protected, such as rare or endangered flora or fauna or historic/archaeological resources. The Area Redevelopment Plan also sets out park development guidelines and standards for parkland located within the River Valley.

River Access Guiding Principles Policy C586, 2015

Understanding that the North Saskatchewan River is important to Edmontonians' quality of life, the River Access Guiding Principles help to ensure that people can access the river for recreation and enjoyment. They also ensure that activities that occur in the river and the River Valley are appropriate, safe and ecologically responsible.

Ribbon of Green

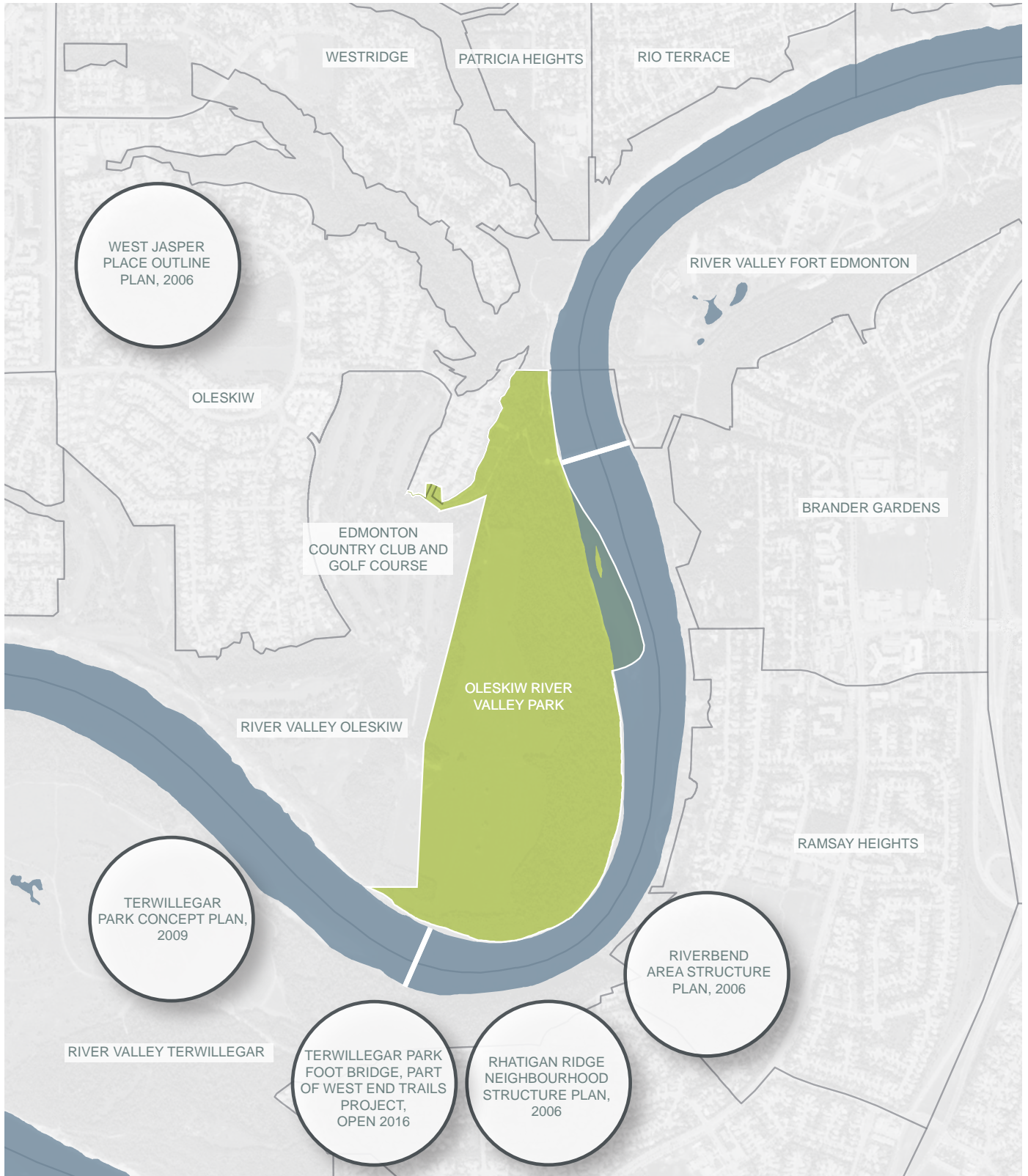
- » Concept Plan, 1990
- » Master Plan, 1992
- » Southwest Priority 2 Area, Under development

The Ribbon of Green Master Plan establishes policy guidelines for the long-term development, use and care of the entire valley. It limits development within the River Valley to an integrated trail system, providing river accessibility, but protecting the valley landscape and wildlife. The work being completed for the Southwest Priority 2 Area, which includes Oleskiw River Valley Park, will update, consolidate, and expand on the Ribbon of Green Concept Plan (1990) and the Ribbon of Green Master Plan (1992). The Southwest Priority 2 Area also outlines park development guidelines that will be applicable to the planning and development at Oleskiw River Valley Park.

Neighbourhood Plans

- » Terwillegar Park Concept Plan, 2009
- » West End Trails Project
- » Rhatigan Ridge Neighbourhood Structure Plan, 2006
- » West Jasper Place Outline Plan, 2006 Consolidation
- » Riverbend Area Structure Plan, 2006 Consolidation

Oleskiw River Valley Park Planning Context



Phase 2 Engagement Materials

The information that was presented during the Phase 2 open house and engagement workshops built on our initial understanding of the park, including what we heard from you during the first phase of engagement.

Previous work

In the first phase of engagement, Inventory and Analysis, we asked what you like about the park, why it is important to you and what you want to see in the future. To help frame the conversation and provide a context for the park, we presented an inventory of various aspects of the park system, showing our initial understanding of the park. The analysis included elements such as the park history, access, amenities, maintenance, natural features and utilities and servicing.

During Phase 1, we learned a lot more about the park from you, expanding our understanding of the Oleskiw River Valley Park. For more on what we presented and what we heard during Phase 1, check out edmonton.ca/oleskiwparkmasterplan.

Our exploration of the park conditions continued into Phase 2 as we mapped and reported on environmental sensitivities. The following, including the environmental sensitivities, are highlights of what we presented at all engagement events and meetings during Phase 2.

Building capacity

To continue the conversation about the park, we presented more of our work to date. We wanted the public to be informed of our progress so that they could provide informed feedback. Participants of all activities were provided with an opportunity to learn about and review the presented information, which consisted of:

- » Project timeline
- » What we heard from Phase 1 and resulting five themes
- » Environmental sensitivities
- » Common values and themes for the park

Environmental Sensitivities

The Oleskiw River Valley Park is part of the larger North Saskatchewan River Valley green network – providing trail connections for Edmonton's residents, essential wildlife habitats and ecological linkages. To find a responsible balance between human use and ecological protection, it is necessary to understand the sensitivity of the park's natural features.

The North Saskatchewan River Valley Area Redevelopment Plan, Bylaw 7188, sets out the environmental factors that must be understood before development can occur within the North Saskatchewan River Valley in Edmonton.

The environmental factors that contribute to environmentally sensitive landscapes are:

- » Hydrology
- » Geology/Geomorphology
- » Vegetation
- » Soils
- » Wildlife (Habitat Potential)
- » Historical/Archaeological Resources

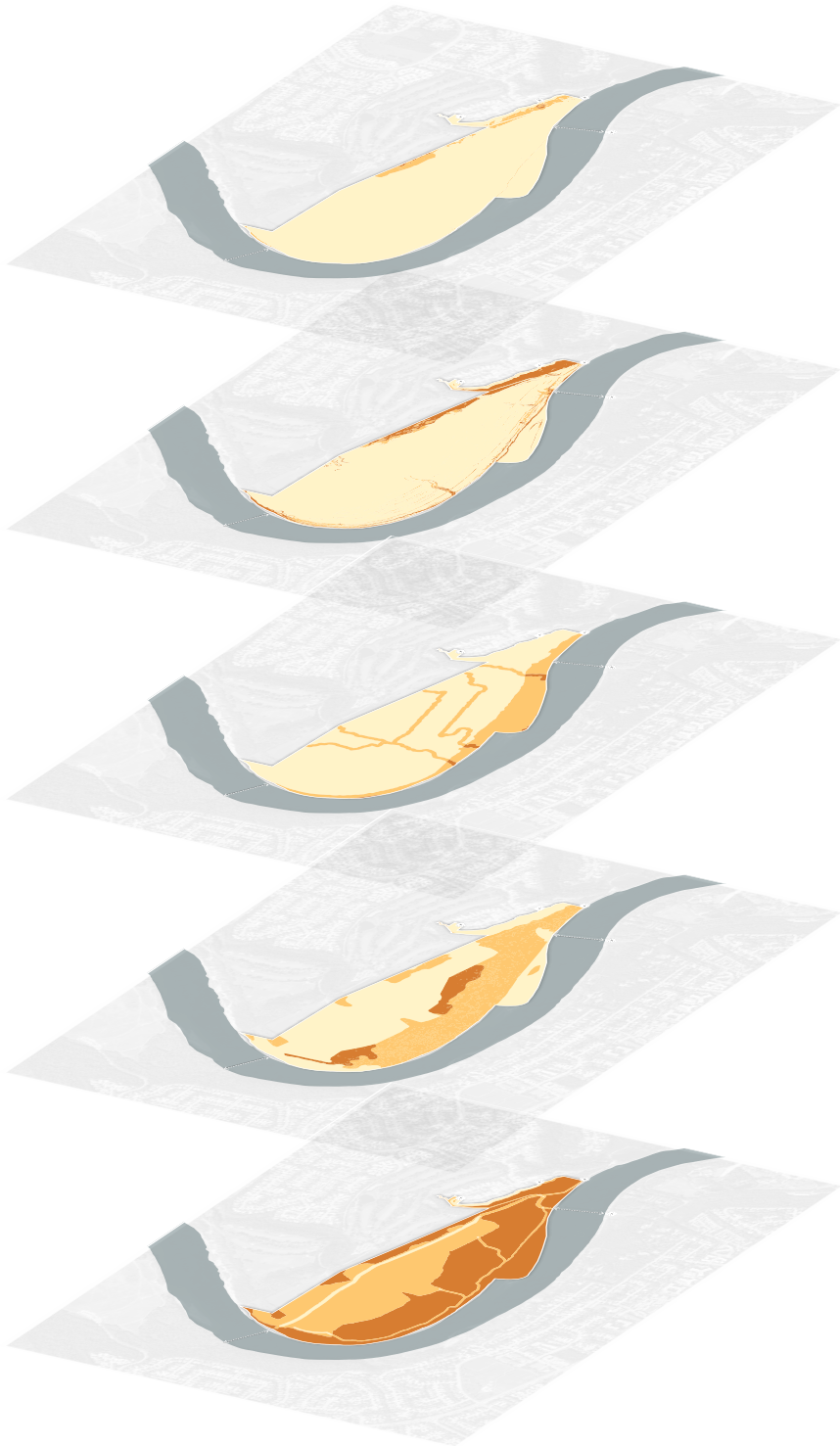
Other factors to consider include:

- » Noise/Odour/Visual Impacts
- » Surrounding Land Use Compatibility

As part of the Master Plan process, we developed an environmental sensitivity report based on an Environmental Overview of the park and research by environmental consultants. The report outlines higher and lower sensitivity zones, which reflect the degree to which human activity could have an impact on the ecological balance throughout the park. You can find the report on the project website: edmonton.ca/oleskiwparkmasterplan.

Factors that Contribute to Environmental Sensitivity:

Higher sensitivity areas are more susceptible to disturbance and require a higher level of protection. The following factors contribute to an increased potential for disturbance from human impact.



Higher sensitivity Lower sensitivity

Geology/soils

Historical landslides and the potential for slope failure contribute to greater sensitivity to development, which could aggravate already unstable soils.

Slope

Steeper slopes have a higher sensitivity because of the potential for slope failure when disturbed.

Hydrology / Hydrography

Seasonal streams, areas in the floodplain and wetland areas all contribute to higher sensitivity areas. Storm water contamination and habitat disturbance are major concerns in these areas.

Vegetation

Dense vegetation has the potential to provide quality habitat for many forms of wildlife as well as stabilizing soil on steep slopes. Areas with dense vegetation are considered to have a higher sensitivity to development.

Habitat potential

Areas with limited human impact and that are difficult for humans to access are more likely to have higher habitat potential.

Management of Sensitivity Zones

Our findings helped us to define the most sensitive areas of the park, which we presented to the public during Phase 2. We gave participants the opportunity to incorporate the sensitivity analysis into the activities as they contributed to the park vision and identity.

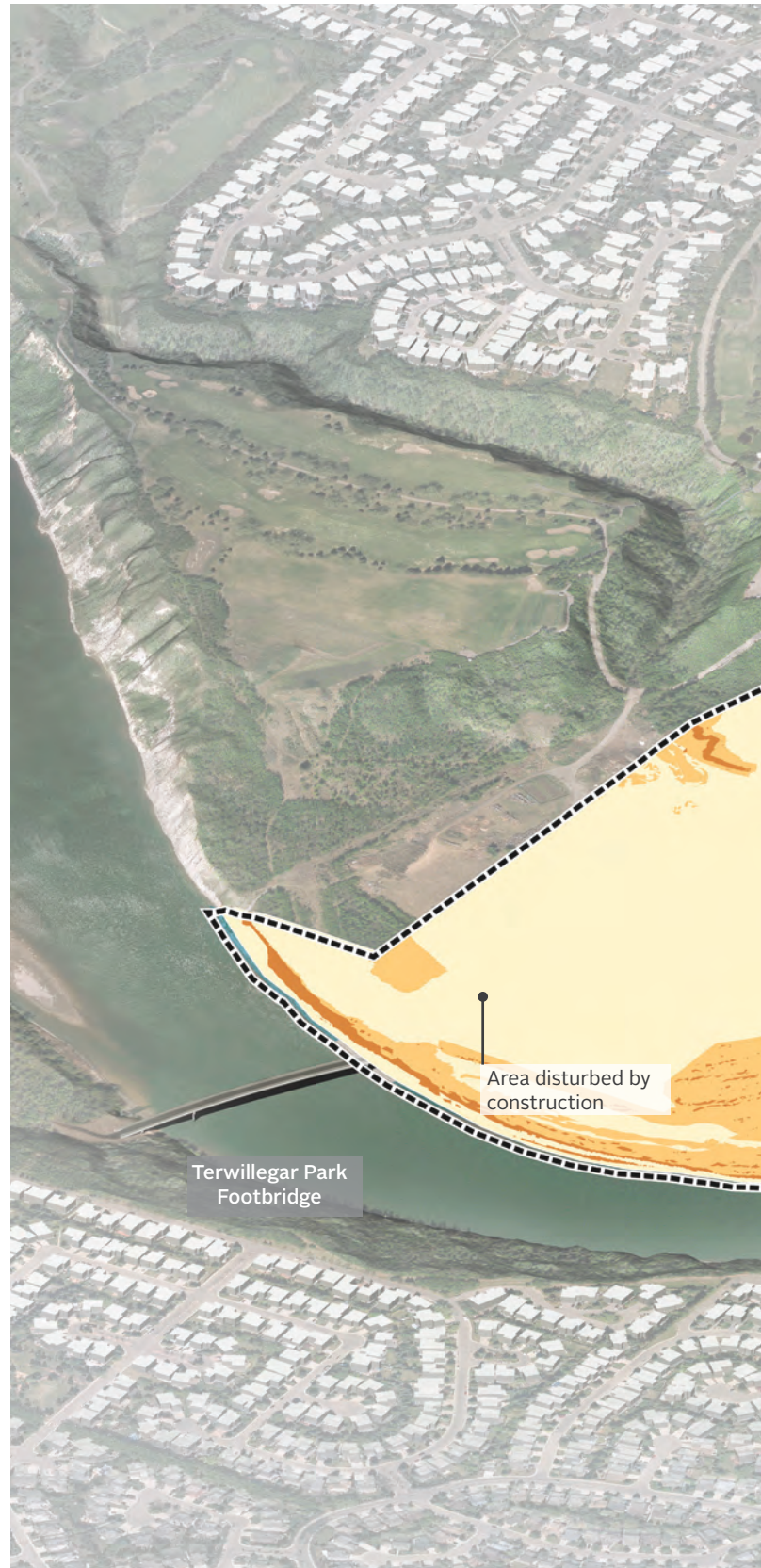
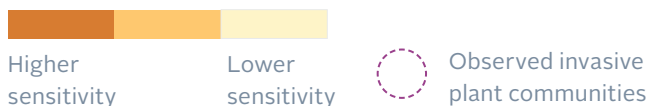
The Master Plan will use the sensitivity analysis as a framework to guide the level of protection and development in the park. As we layer public desires for amenities over the environmental sensitivities, we will be able to better understand the program and activities that are best suited to the conditions of the park with consideration of the public vision.

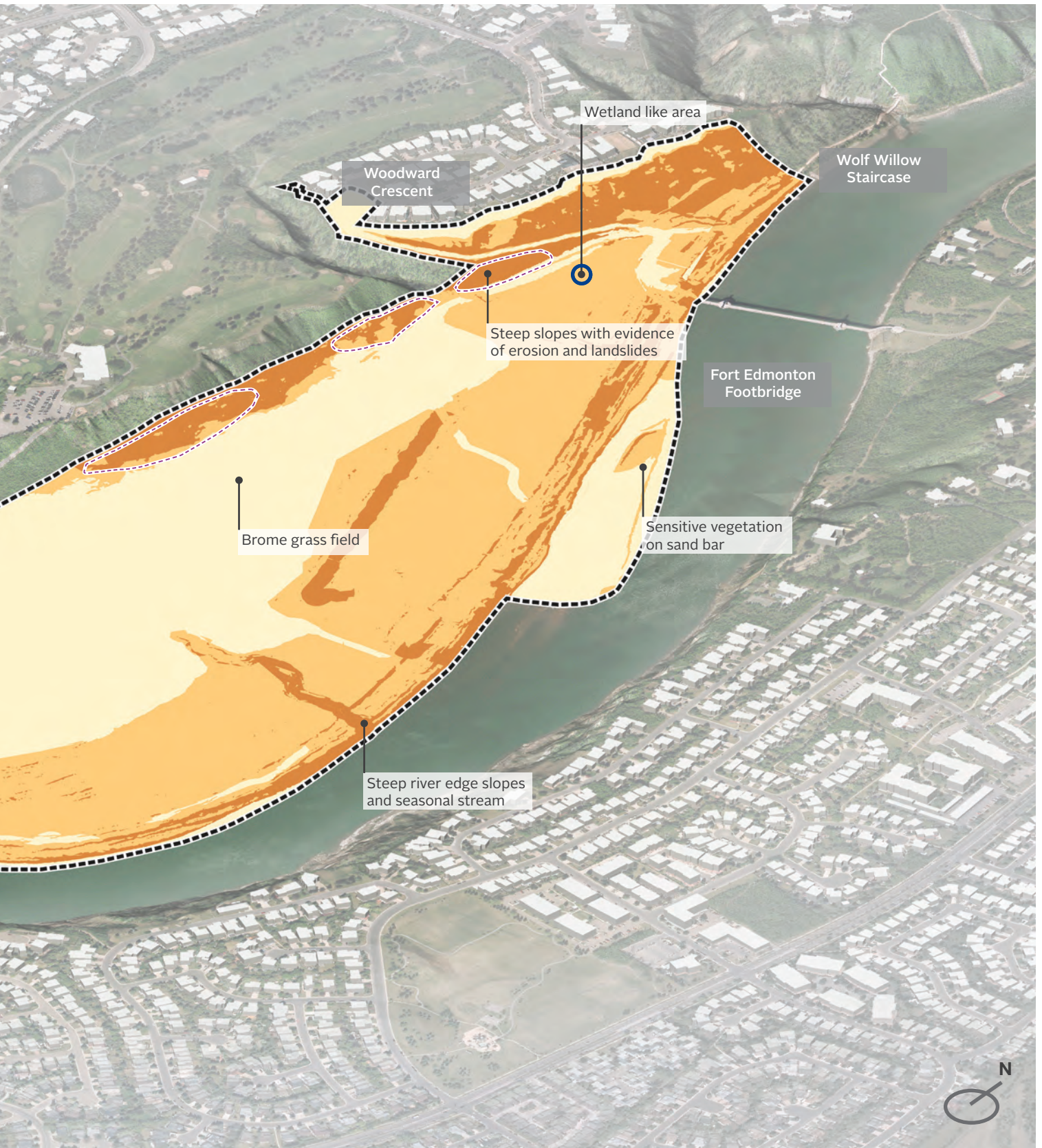
Based on principles from the Ribbon of Green Master Plan (1992), areas of higher and lower sensitivity have different management and protection recommendations. The park Master Plan will use the sensitivity zones as the basis for a decision-making framework to guide the level of protection and development in the park. The sensitivity levels will be layered with the public's vision and desired park elements to determine solutions that are both feasible and responsible.

Development in higher sensitivity areas should be thoughtfully considered in order to protect the park's natural resources. Suggested management practices include minimal development, routine maintenance and restricted wildlife control. Only emergency safety and security services are recommended. In cases where there is potential for significant historical resources to exist, development is subject to a Historical Resources Impact Assessment by the Province.

The interaction of natural resources and human activity should be managed in medium sensitivity areas to prevent unnecessary negative environmental impacts. Suggested management practices include development limited to trails, routine garbage collection and trail edge maintenance, limited wildlife control, some habitat restoration and some safety and security services.

Lower sensitivity areas have experienced the most ecological degradation. These degraded areas are most suitable for increased activity. However, they may also have the greatest potential for ecological restoration, possibly requiring significant effort.





Accessing the Park

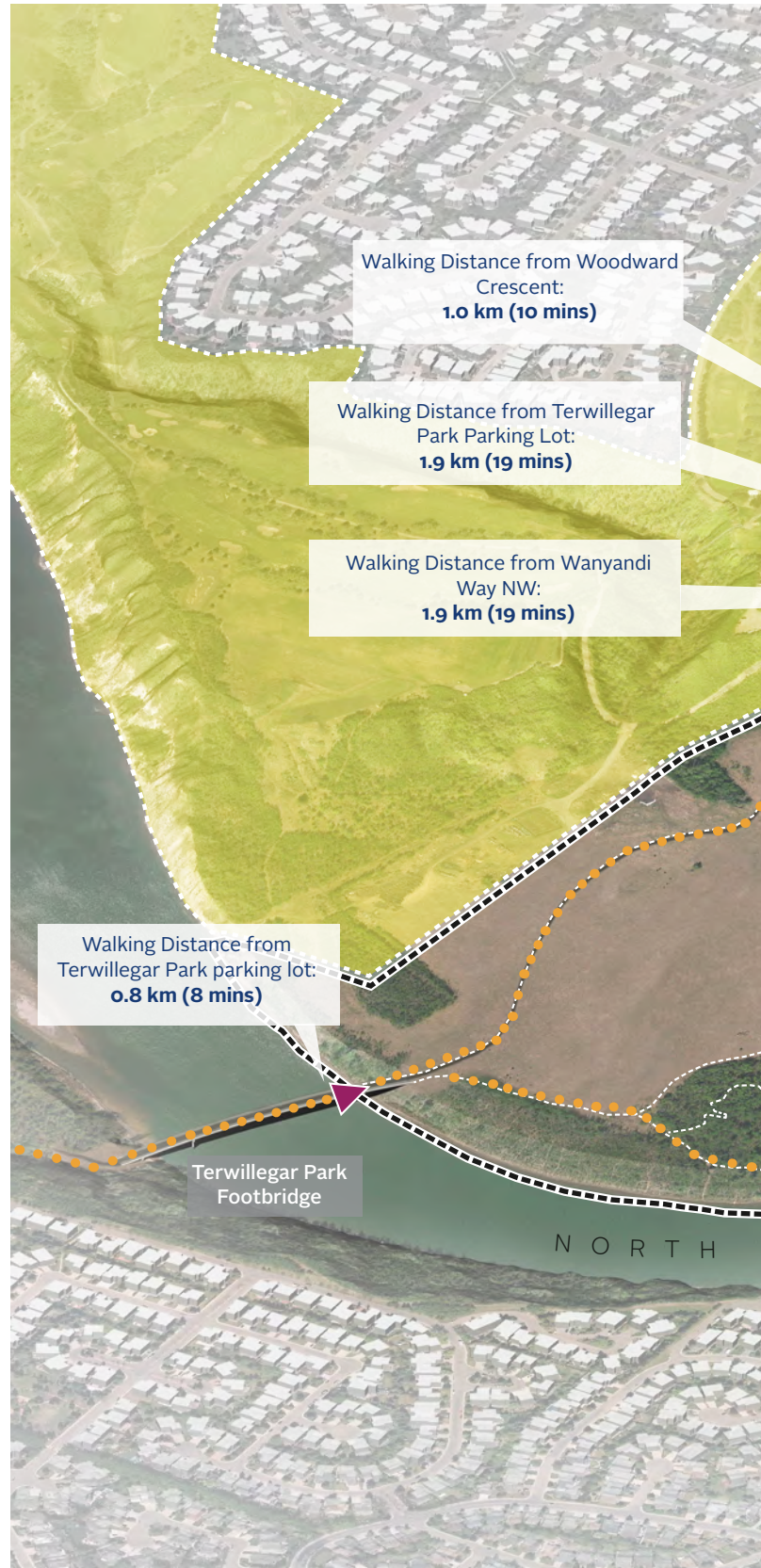
During Phase 1 in September 2016, the City heard various perspectives about how vehicle traffic could be managed in the park and surrounding neighbourhoods. Since that time, the City has reviewed various options and has identified significant physical limitations to providing public vehicular access into the park. Due to physical constraints and feasibility concerns, vehicle access will not be pursued.

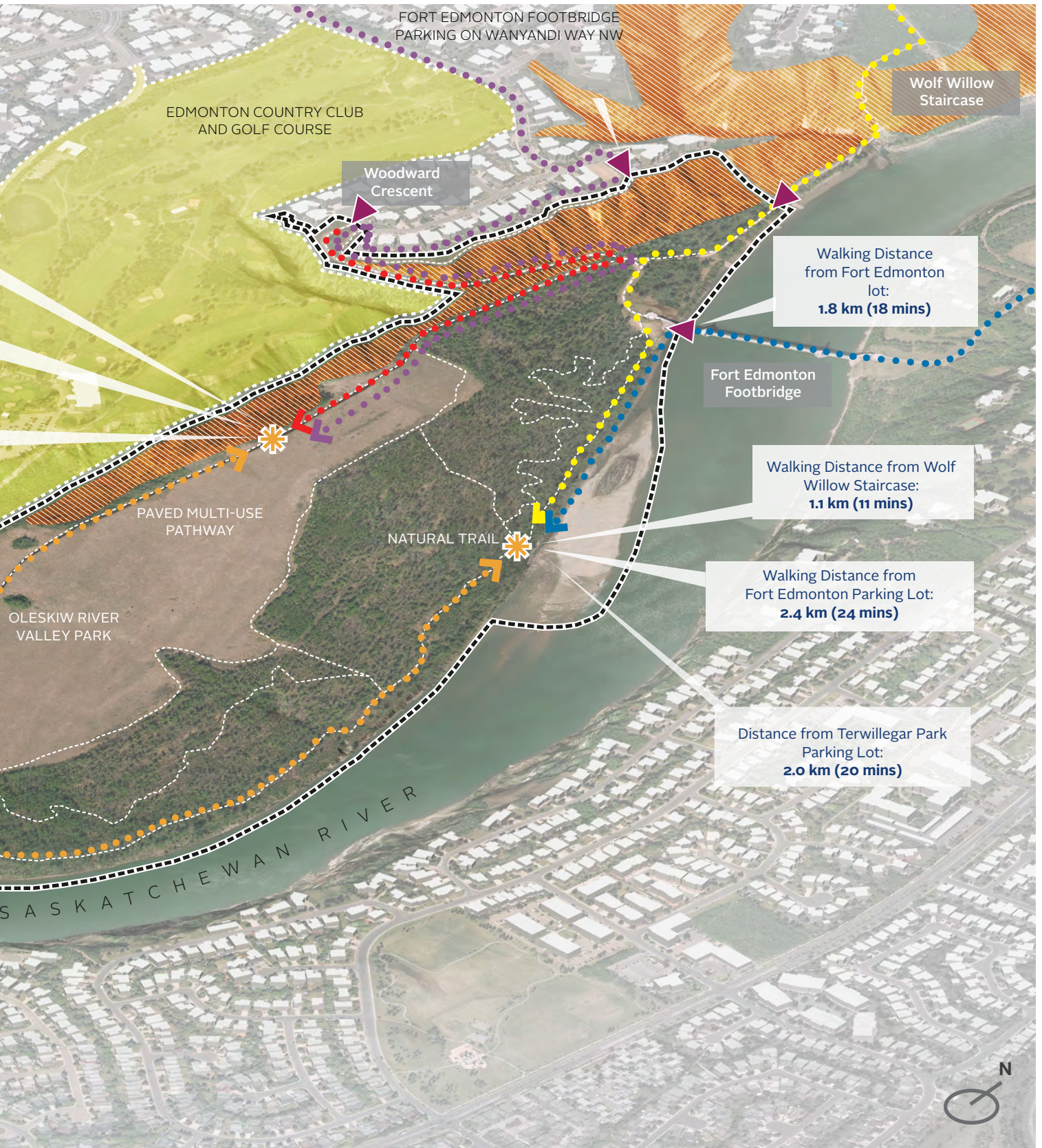
Future park amenities and programming will be affected by the restrictions on vehicular access from both a user and maintenance perspective. Restrictions include topography and travel time from current parking and transit locations. Travel times (walking) to approximately the centre of the park have been estimated. These times will have an impact on the location of future amenities in the park.

Average walking time to the centre of the park from:

- Terwillegar Park Footbridge: 11 minutes
- Woodward Crescent: 10 minutes
- Wolf Willow Staircase: 11 minutes
- Fort Edmonton Footbridge: 6 minutes

- ✳ Centre of Park
- ▲ Entrance - Pedestrian and Cycling
- Steep Slopes with Signs of Erosion
- Private Property
- Park Boundary





Landscape Units

We defined landscape units to help describe the existing conditions in the park. A landscape unit is an area that has unique natural features and common activity uses. The seven landscape units we defined in Oleskiw River Valley Park are:

- » River Valley Slopes
- » Mobility Corridor
- » Park Gateways
- » Valley Field
- » Riparian Forest
- » River Edge
- » Sand Bar

Each landscape unit has a unique set of opportunities and constraints based on what we heard from the public and stakeholders during Phase 1 of engagement, City priorities, and environmental sensitivities.





Woodward Crescent

Wolf Willow Staircase

Park Gateways

River Valley Slopes

Fort Edmonton Footbridge

Valley Field

Mobility Corridor

Riparian Forest

Sand Bar



Key Considerations

To respond to existing opportunities and constraints, the City summarized key considerations from all inputs to provide direction for the future management and conceptual plan of the park. These considerations are foundational elements that help to ensure the goals for the park are realized and, along with the feedback from Phase 2 of engagement, will help to create the long-term vision for the Master Plan.

River Valley Slopes

The River Valley Slopes make up a relatively small area within the park, but add to the character and identity of the park. Restoration efforts can be made to reduce the occurrence of invasive species and to stabilize the slope material.

- » Enhance viewpoints.
- » Maintain existing vegetation. Explore re-naturalization and the removal of invasive species.
- » Consider fire prevention techniques while maintaining ecological integrity.
- » Enhance existing access points.
- » The trail from Woodward Crescent into the park will be repaired as a separate City project. Planning for the repair work is under way.

Mobility Corridor + Park Gateways

The Mobility Corridor consists of the new paved multi-use pathway that runs north-south through the grass fields and forest in the project area. The pathway currently supports space for several activities, including dog walking, running, walking and cycling. The Master Plan will explore where circulation connections or more activities are appropriate.

The Park Gateways are small, flat areas of land that are key transitional spaces as users enter or exit the park. These areas generally contain managed vegetation and pathways or bridges. They are highly geared to human use and currently have little ecological function. They have potential to be enhanced through planting, amenities and wayfinding signage.

- » Enhance use of the new multi-use trail by providing amenities and rest stops, enhancing ecological features and / or creating new trail connections.
- » Increase wayfinding and regulatory signage. Provide education on trail use to help avoid user conflict.
- » Provide information on trail distances, features in the park and the physical accessibility / difficulty of trails and amenities at all entrances.
- » Enhance vegetation and signage to create a strong identity at park entrances.

Valley Field

The Valley Field, formerly a golf course and hay field, is currently an unmanaged grass field that contains some potentially invasive grass species. Two ephemeral streams also pass through this landscape. Additionally, there are some birds of prey that may use this part of the landscape for hunting small mammals.

- » Build on existing character in the park, including its rich history, to create a unique experience and enhance ecological value for wildlife.
- » Balance desired activity in the park with ecological sensitivities, habitat potential and surrounding land uses.
- » Provide activities and amenities that are compatible with access and maintenance limitations in the park.

Riparian Forest

The Riparian Forest is an established tree stand with relatively few invasive species. This landscape unit runs along the eastern portion of the project area and is potentially a habitat for several species of birds, animals and amphibians.

- » Maintain vegetation and wildlife habitat.
- » Explore opportunities to increase ecological connectivity to other River Valley parks and green spaces.
- » Promote ecological interpretation throughout the park.
- » Enhance trail based activities while maintaining the ecological integrity of the forest.
- » Increase wayfinding and regulatory signage.

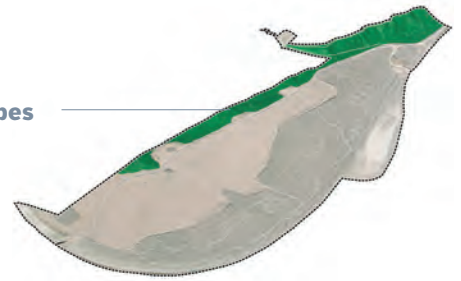
River Edge + Sand Bar

The River Edge is the steep and narrow transitional landscape unit between the tree stand and the river. Vegetation grows nearly to the water's edge, which helps to mitigate river erosion.

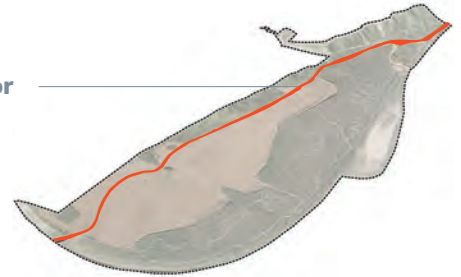
The Sand Bar is a separate landscape unit because it is the most dynamic landform in the project area and is one of the only locations in the park where people can access the North Saskatchewan River. The Sand Bar is formed from changing river levels and sand deposits in the river, and is sensitive to highly impactful human activity.

- » Promote new views to the river while maintaining the quality of vegetation along the River Edge.
- » Increase regulatory signage near the Sand Bar.
- » Do not promote high impact activity around the Sand Bar to limit negative effects on the landform.
- » Promote ecological interpretation.

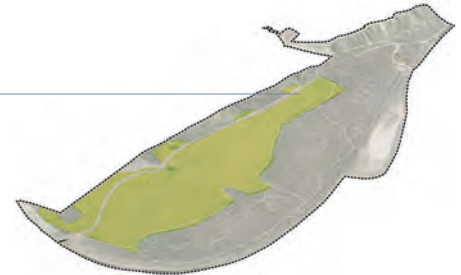
River Valley Slopes



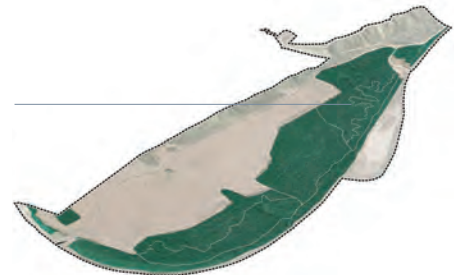
Mobility Corridor



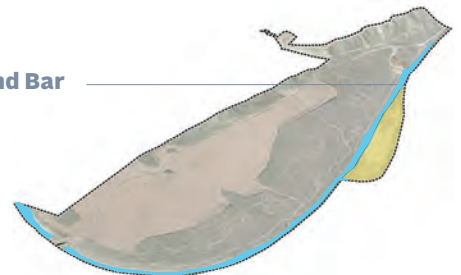
Valley Field



Riparian Forest



River Edge + Sand Bar





How were the engagement opportunities advertised?



7 147
mailed flyers



Edmonton
Examiner
print ad

157k
readers



183k
followers



74k
followers



1
project web
page



3
road signs



1
public service
announcements



email
invitations

311
script update

What We Did

In June and July 2017, Edmontonians were invited to provide input on the developing vision and desired program for Oleskiw River Valley Park through an external stakeholder workshop, a public open house, and an online survey.

There were two main goals for this phase of engagement:

1. Facilitate a shared understanding of the park's opportunities and constraints by presenting the site analysis, the environmental sensitivities analysis, and engagement results from Phase 1.
2. Understand the public's desired vision and identity for the park in 25 years, both conceptually and spatially.

What were the opportunities for engagement?

Opportunities for stakeholders and citizens to provide input on the future of the park included the following:

- » In-person at a public open house. This resulted in 91 attendees providing 506 comments and 1322 preference dots.
- » Online, through a survey and mapping tool. This resulted in 203 participants providing 3420 comments and 7491 preferences.
- » In-person at a stakeholder workshop, where nine representatives from community and city-wide organizations were engaged in a presentation and in-depth conversation.
- » In-person at a staff open house at City Hall, resulting in conversations with representatives from other City departments to align with other ongoing initiatives.

How did we analyze the feedback?

Responses to each of the activities were analyzed separately to determine trends and preferences. Trends and common themes emerged as we read and categorized all of the

proposed vision statements from the open house, external stakeholder workshop and the online survey. These themes will be used to craft two vision statements for Oleskiw River Valley Park, which will be presented at the next phase of engagement in alignment with the concept plan options.

All park amenities and activities that were placed in the Create your own park! activity and on the online map tool were combined and analyzed to find spatial patterns. We were interested in understanding where activities are desired, where they are compatible with existing conditions and where there might be conflict.

Finally, the preferences for park elements from the online survey and the Park Elements activity were tallied and summarized to give us an idea of your level of preference for the types of activities and elements you want to see.

What questions were asked?

To obtain feedback, citizens were asked to provide feedback through five questions:

How did you get to the park?

Participants were asked to indicate where they enter the park and what transportation mode they would likely be using (walking, biking, by car, etc.).

Input provides an understanding of current usage patterns and accessibility gaps. This information will help inform suitable park entry concept options and associated amenities.



Write your own vision

Participants were presented with phrases and words to piece together their desired vision statement for the park. They were also offered an opportunity to write a freeform vision statement of their own. At the open house, participants were further encouraged to place dots on phrases or words they agreed with that were already on the wall.

Input will help draft a shared vision statement, and inform strategic direction for the concept options.



Create your own park

Participants were presented with a current map of the park (game board), along with park elements and programs (game pieces) that could be included in the park concept. Participants were asked to use the pieces to design the park, either individually or as a group.

This input will inform the development of the concept options and placement of specific park programs and/or elements. Input will also build a better understanding of the different park needs and user perspectives.



Help us name this park

This activity was a ranking exercise. Participants were presented with four factors that could influence naming of the park (natural heritage, history, indigenous heritage, political figures), and asked to prioritize which factors should be considered when creating a new name for the park. A nearby park in the community is already referred to as “Oleskiw Park” and a new name for this River Valley park will complement its identity as a unique space in Edmonton.

Feedback from this question will be used to put forward a recommendation to the City of Edmonton’s naming committee for the park.



Park elements

In this dotmocracy exercise, participants were shown five main categories of images (corresponding to the park themes), sub grouped by activity, program and physical element type such as signage, park furniture, and equipment. Participants were asked to place dots on their preferences.

Selection trends will inform the types of general program and park elements to be explored in the concept options. Comments will be used to inform strategic decision-making as the concept options are developed.

Phase 2 Engagement Goals

Inputs

Throughout the engagement process we have emphasized that public input, City policies and site analysis inform decisions for the Master Plan. During Phase 2, we presented our current understanding of the park, including what we heard from Phase 1 and environmental sensitivities.

Public Input	City Policies	Site Analysis
Phase 1 Public + Stakeholder Engagement	City-Wide + River Valley Policies	Site Inventory + Analysis
Phase 1 What We Heard	Provincial + Federal Policies	Environmental Sensitivities



Information

We considered inputs from all sources to develop a set of opportunities and constraints for the Master Plan.

The common values we presented are our foundational guidelines for how the Master Plan will respond to the opportunities and constraints. We wanted to hear if you think we got the them right.



Involvement

We asked participants to build on their previous feedback and to respond to the information presented by contributing to guided activities in-person and on-line. The purpose of these exercises were to help us gain further insight into the public's long-term vision and program ideas for the Oleskiw River Valley Park.





Public Open House

Tuesday, June 27, 2017, 5:30–8:30pm

Westridge Wolf Willow Country Club Community League
91 attendees

The public was provided with a drop-in opportunity to learn about the project and provide input into the park's vision and program. The open house was generally set up into five distinct areas: one for background information, and four stations for engagement questions. People generally spent over 30 minutes at the open house and were highly engaged in providing feedback at the engagement stations and through discussions with staff.

Reactions collected at the open house through event feedback forms and conversations with staff indicated very positive experiences. The staff was knowledgeable, available and friendly, and the event was well laid out and interactive. Participants were welcomed and encouraged to understand their views. We will continue to communicate how feedback will be used, and make sure concerns are heard and understood.



External Stakeholder Workshop

Monday, June 26, 5:30–7:30pm

Westridge Wolf Willow Country Club Community League
9 attendees

Representatives of city-wide and community organizations with an interest in planning Oleskiw River Valley Park attended a focused engagement session to help develop the vision and program for the park. The presentation and discussion provided a strong foundation for conversations around the opportunities and constraints. Participants were also invited to participate in the online survey and/or attend the public open house that would be taking place the following evening.

Represented organizations included:

- » Edmonton Country Club and Golf Course
- » Edmonton Nature Club
- » Edmonton Mountain Bike Association
- » Sierra Club Canada
- » Edmonton Native Plant Group
- » Westridge Wolf Willow Country Club Community League



Internal Stakeholder Open House and Survey

Tuesday, June 27, 2017, 12:30–2:30pm
 Edmonton Tower
 22 attendees

A two-hour drop-in session for City staff to learn about the concept options offered available over lunch time. City staff perused the information and provided feedback on the panels. Tailored survey questions were created for relevant departments. Departments that were represented at the staff open house include:

- » Citizen Services, Accessibility Services
- » Citizen Services, Winter City Office
- » Communications & Engagement, Public Engagement Office
- » Sustainable Development, City Planning
- » Integrated Infrastructure Services, Facility Planning and Design
- » Integrated Infrastructure Services, Transportation Planning and Design
- » Integrated Infrastructure Services, Building Great Neighbourhoods
- » City Operations, Urban Forestry
- » City Operations, Drainage Planning and Engineering

For relevant departments unable to attend in person, the targeted survey was emailed.



Online Survey

June 29 - July 14, 2017
 203 participants

To complement the in-person engagement opportunities, the open house presentation and engagement questions were available online. The survey was distributed through the Insight Community and available to the public through the project website edmonton.ca/oleskiwparkmasterplan. The opportunity to provide feedback through the project website was advertised at the in-person events and through the City's social media accounts and outreach materials.

Participants were welcomed to provide spatial input using an online map tool linked from the survey. In this map tool, participants could place pins representing park elements and activities where they would like to see them in the park, in addition to general spatial comments.

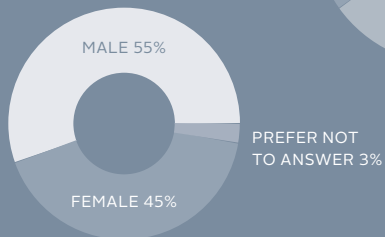
What We Heard

During this phase, 325 people provided 13,250 comments and preference selections. Here is a summary of what the public said:

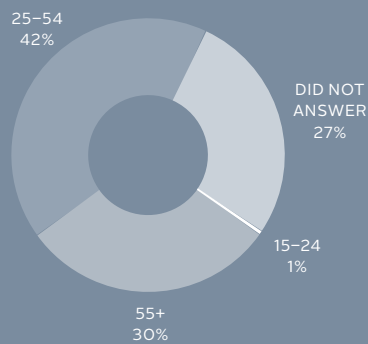
In our conversations about the park, we found that people love this space and are very passionate about the park. Generally they love the natural, contemplative, quiet experience of the place. The character of this park is very different from an “inner city park”, and most want the experience to remain this way. Most respondents were consistent in expressing the desire for a low impact park; some informal amenities would be nice. Restoration of the riparian forest, grasslands and slopes is desired.

Opportunities for interpretive signage and education programs about wildlife, vegetation, and river ecology are desirable. Encouragement of activities such as walking, hiking, skiing and nature photography are supported. Accessibility for those with decreased mobility could be improved, mainly the pathways near the entrances. Some concern about inappropriate after hours use was expressed.

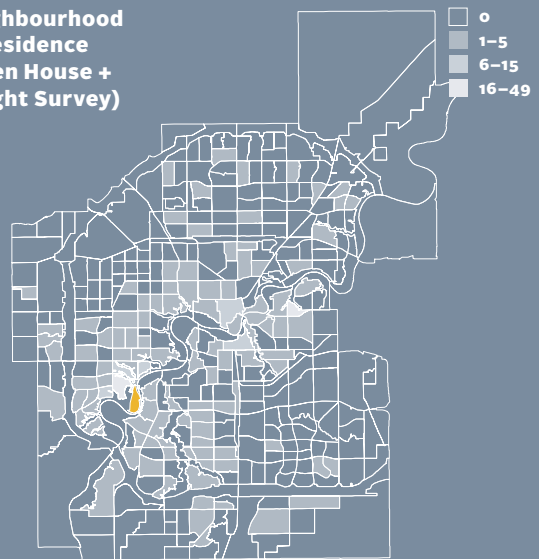
Gender (Insight Survey)



Respondent age (Insight Survey)



Neighbourhood of residence (Open House + Insight Survey)



91 open house attendees	+	9 external stakeholder participants	+	22 internal stakeholder participants	+	203 online survey participants	=	325 engaged citizens
		4015 comments	+	9235 preference selections	=	13,250 total interactions		

For Phase 2, here is a summary of common themes heard across all engagement activities:

Park vision

The majority said that conservation and protection of the park's existing natural features is important to the future of the park.

Lack of vehicle access and parking decreases likelihood as a destination for gatherings. This would be a park that would be accessed primarily by walking or cycling.

Most comments indicated that this park should focus on River Valley connectivity, fostering wildlife, and be an escape from city life.

Park name

Rich natural landscape should inspire the new park name, complemented by traditional heritage.

Naming the park after a political figure is not desirable.

Enhance the Oleskiw experience

People love this park. Let's build on opportunities that already exist and add a few features to complement this experience.

Add directional and nature interpretation signage throughout the park to enhance experience.

Provide views that capture the beauty of the river. Some desire for river access was expressed through the comments.

Would like to see more Indigenous engagement and oral history of the site; be mindful that this is an area with many stories. Recognize that what is in the park now is not what was there before.

Preserve for future generations and consider the cultural landscape heritage.

Locate new amenities within a short walk of the parking areas if possible. Best for community use but also for park maintenance.

Park use has increased since Terwilleger Park Footbridge has opened; must consider how to manage influx of visitors.

Consider flooding in the landscape.

After hours misuse is frequent; need to clearly communicate operating hours and enforce rules. Emergency services and park operations should have easy access for safety and maintenance.

Restore riparian edge.

New park elements

Many want to keep the park undisturbed, but natural seating at regular intervals, washroom facilities and some interpretative signage would be welcome.

Environmentally-sensitive, informal amenities would be complementary: shelter and shade, a few tables, but no BBQ areas due to associated fire hazard.

"Low-impact", "subtle", "temporary" gathering space is desirable (not a formal performance space). Some are concerned that gathering spaces would contradict the idea of a park that is "wild" and "natural".

Those who wanted to enhance the pathway network suggest low-maintenance trails for running, cross-country skiing, respectful cycling and mountain biking. Some suggested paved trails but most prefer natural surfaces.

Grassland area is already disturbed; would be a great place to provide recreational amenities such as ski trails or a multi-use field.



Question 1

Write your own vision

311 phrases from the open house
1,902 phrases from the online survey

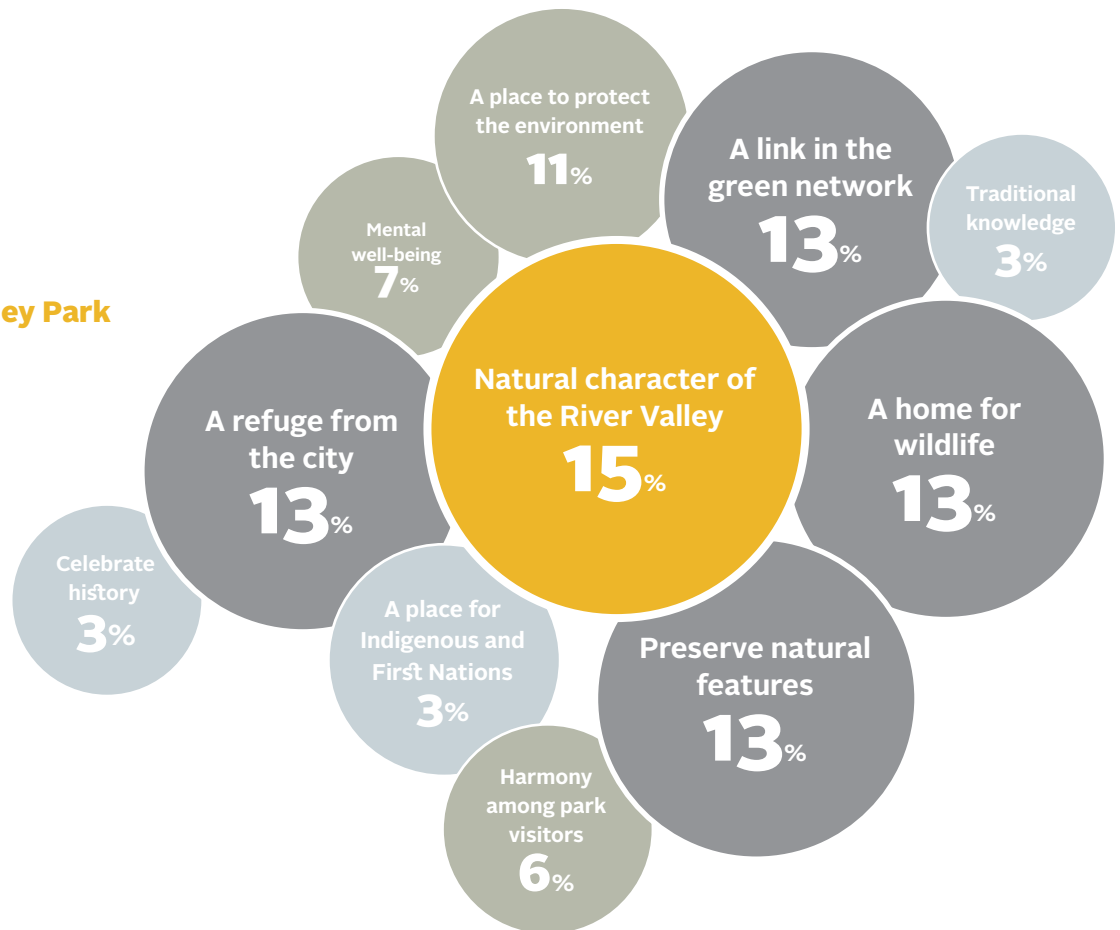
Feedback from this activity demonstrated a clear vision for Oleskiw River Valley Park as a natural park, with a significant emphasis on conservation and ecological values. Use of terms like “Ribbon of Green”, “connectivity”, and “river network” also suggest the importance of this park as a part of the city’s river and ravine system.

The most popular phrases and sentiments chosen by participants are shown below, along with the percentage of participants that indicated support for them. Visions written without the provided prompts are discussed under “New ideas” on the page opposite.



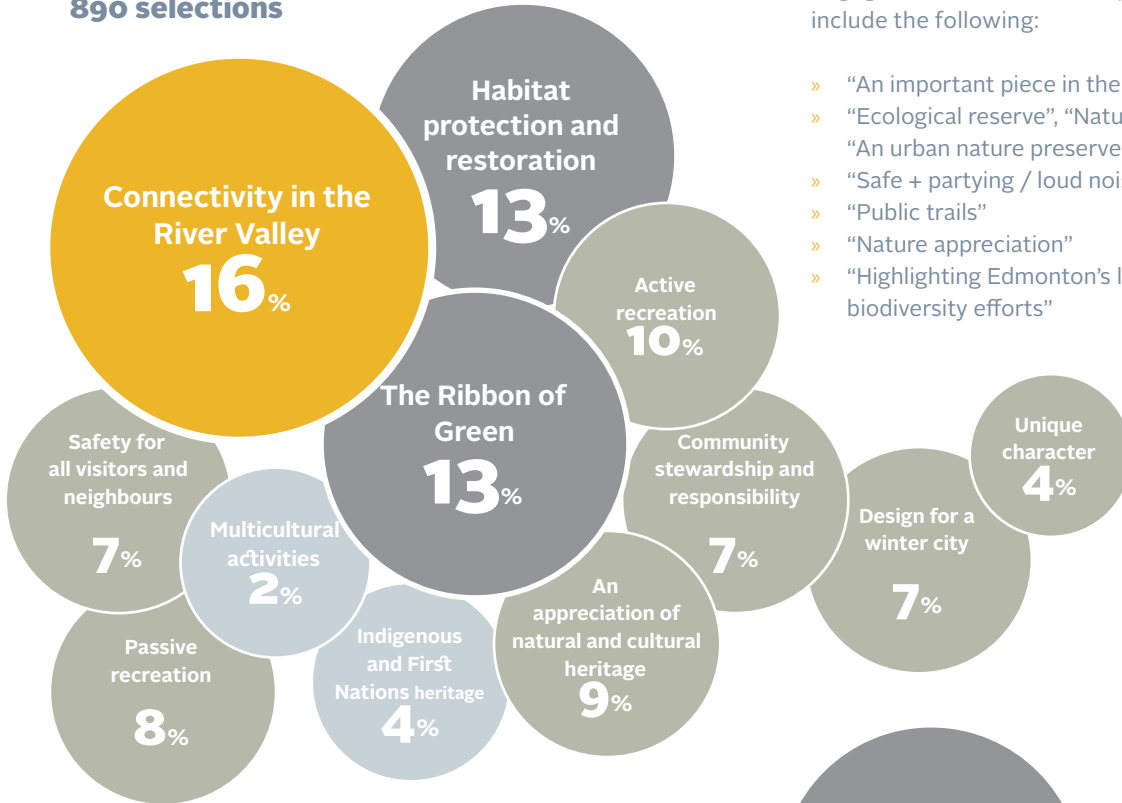
Oleskiw River Valley Park aims to be...

1,012 selections



The park will represent Edmonton's identity as a leader in and leave a legacy as...

890 selections



New ideas that emerged from this phase

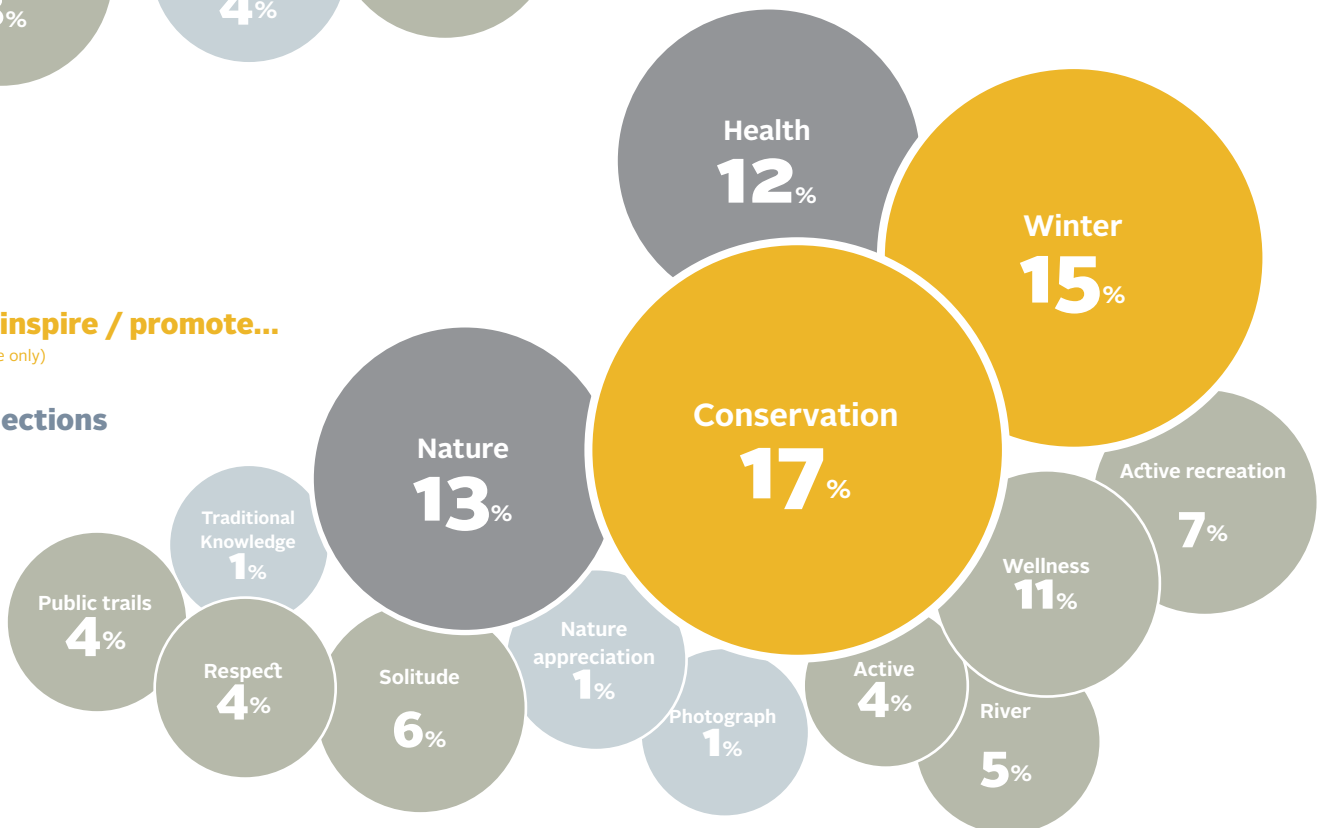
Although all of the phrases and words provided were drawn from the feedback from Phase 1, it was interesting to note that people continued to add phrases in this phase of engagement. New ideas and phrases written by participants include the following:

- » "An important piece in the ecological connectivity puzzle"
- » "Ecological reserve", "Nature reserve", "An urban nature preserve"
- » "Safe + partying / loud noise free"
- » "Public trails"
- » "Nature appreciation"
- » "Highlighting Edmonton's leadership in biodiversity efforts"

It will inspire / promote...

(open house only)

84 selections



Question 2

Help name this park

202 open house priority dots
367 online survey priorities
74 additional comments

The Oleskiw River Valley Park does not currently have an official name. The Master Plan for the Oleskiw River Valley Park will bring forward a recommended name to Edmonton's Naming Committee based on input from the public engagement process. The Naming Committee will review the request in consultation with the Project Team for the Master Plan, Civic Departments and Community League and/or developers if necessary. The Naming Committee will make the final decision for the park's official name.

Participants of the open house ranked their preferred park name inspiration from 1 (most preferred) to 4 (least preferred). The tallied preferences resulted in the following order:

1. Natural Heritage
2. Historical
3. Indigenous Heritage
4. Political Figures

More than half of participants stated their "#1" priority was the Natural Heritage category, reinforcing the ecological and environmental values expressed in Question 1. Comments suggested this would solidify the focus of the park as a natural habitat and guide its development in the future.

Many participants were interested in combining Natural Heritage and Indigenous Heritage to name Oleskiw River Valley Park after an Indigenous word for a natural aspect of the park, which would involve consultation with Indigenous communities.

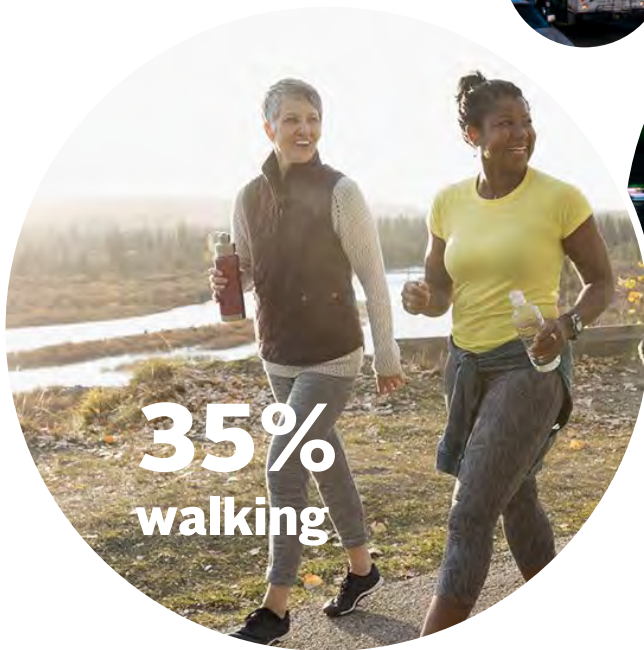
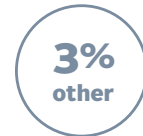
The lowest-ranked category was Political Figures; participants hoped to see more diversity in the city's park names. 36% of additional comments suggested the keeping the park name as "Oleskiw".



Question 3

How did you get here?

773 online comments
135 open house comments
16 external stakeholder comments



With the understanding that there will not be vehicle access into the park, we asked participants how they choose to get to Oleskiw River Valley Park. The results of this activity reinforce the idea that Oleskiw River Valley Park is a multi-modal destination. While the feedback collected is not comprehensive, it does reflect general trends; one such trend is that walking and cycling are more prevalent than travel by car. This mirrors feedback from other activities, suggesting there is an interest in getting to the park by alternative modes of transport - by foot and / or by bike.

Snowshoeing and cross-country skiing were mentioned as winter activities that already take place and should be expanded upon. Several comments mentioned travel by river as well, citing canoe and kayak access and asking for more hand launch spots in the park.

Of the 924 responses, the results of how people get to Oleskiw River Valley Park are above.

Question 4

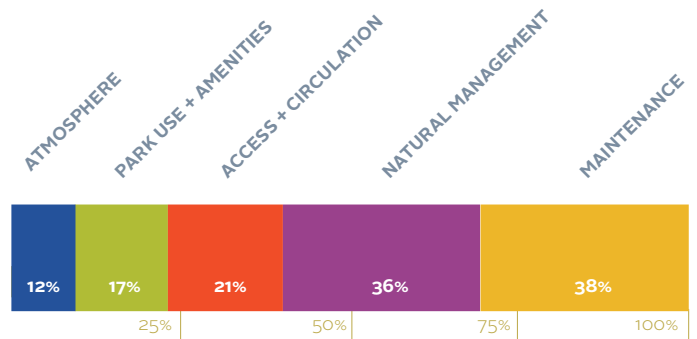
Create your own park

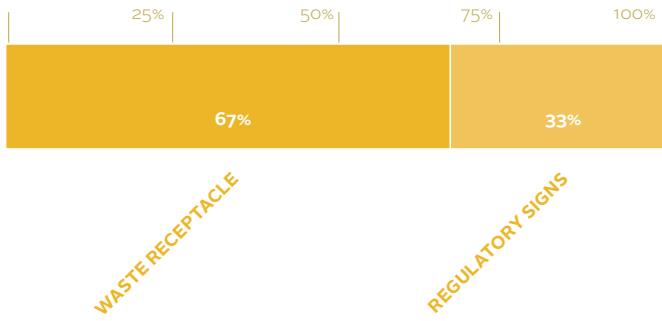
346 open house park elements
66 internal city staff park elements
45 online map park elements

Participants were given a park map and tokens showing icons that represented various park elements so they could design their own park. Several clusters of park elements formed around major entrances and intersecting paths. There was strong support from most participants for preservation areas in the existing forested zones, and restoration areas in the open field. Placement of park amenities suggest the need for seating and waste receptacles at regular intervals in addition to a washroom. There is also an interest in regulatory signage, wayfinding, and map kiosks at park entrances.

Participant priorities by theme

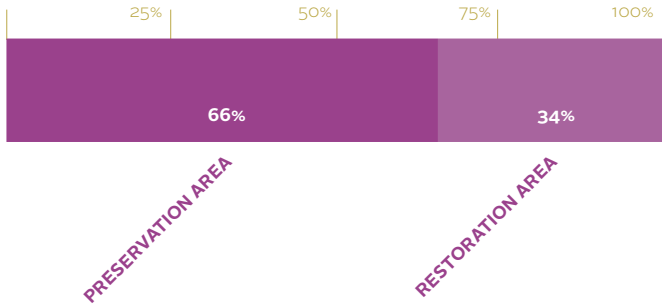
What participants considered to be the most important themes became clear once a tally of the total tokens selected per category was considered. Some themes offered more tokens to choose from so results were weighted proportionally. The resulting overall weighting of tokens selected is illustrated in the graphic below; this provides a summary of the participants' underlying values as a group.





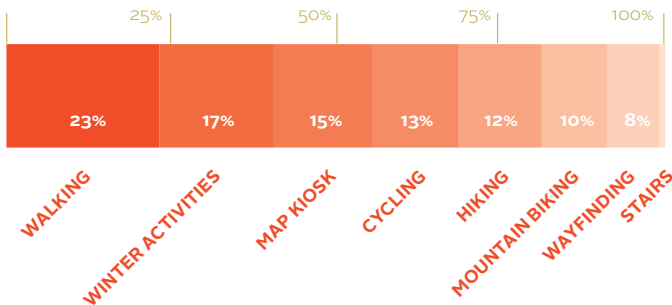
Maintenance

Although only two types of tokens were available in this category for participants to select, maintenance tokens were chosen 59 times. Waste receptacles were the more popular option of the two as many participants placed them at more regular intervals along the park's trails.



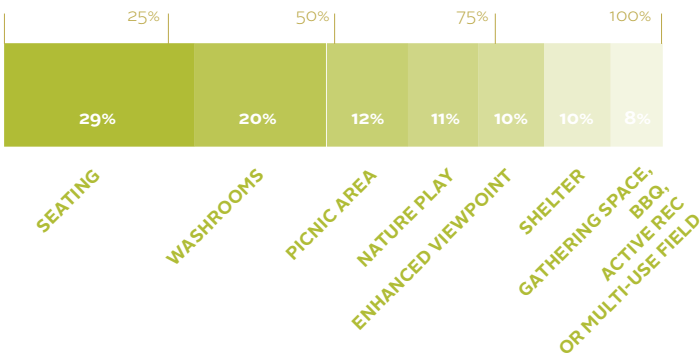
Natural Asset Management

Like the maintenance category, the two options available in natural management were chosen frequently for a total of 58 times. Participants identified more areas they would like preserved than areas to be restored.



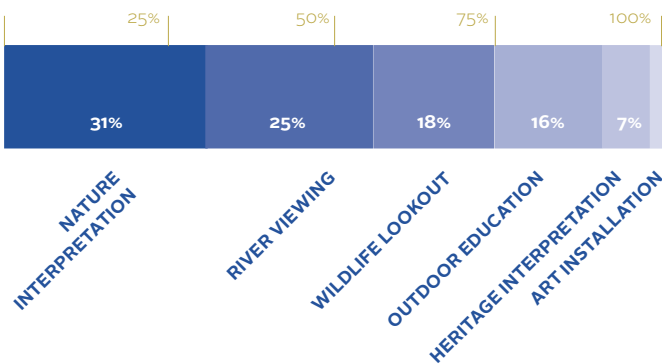
Access + Circulation

A total of 134 tokens were placed from this category. The desires for walking paths and winter activities were expressed as top considerations. A park map at the entrances was also frequently placed.



Park Use + Amenities

A total of 139 tokens were placed from this category. Increased seating and washroom facilities were most frequently used, totalling almost half of the elements selected when people designed Oleskiw Park.



Atmosphere + Identity

A total of 55 tokens were placed from this category. The desire for walking paths and winter activities was expressed as top considerations. A park map at the entrances was also frequently placed.

Maintenance

38% overall



Waste receptacles — 67%

Comments suggested that waste receptacles should be located near major park entrances to ensure they are easy for park staff to access and maintain. The spatial distribution of tokens reflects this, with major clusters formed around the northern Fort Edmonton footbridge entrance and the south Terwillegar Park footbridge entrance.

Regulatory signs — 33%

Signage encouraging responsible use of the park and education for shared use trails was commonly placed by participants in clusters at major entrances and near connective nodes in the trail network.

Natural Management

36% overall



Preservation area — 66%

Preservation areas were one of the most commonly chosen elements in this activity; this mirrors the ecological values expressed in Question 1 (“Write your own vision”). Participants scattered tokens throughout the Riparian Forest and in a cluster on the Sand Bar area. A few tokens were placed in the Valley Field area, but the adjacent map illustrates a greater interest in restoration for this space.



Restoration area — 34%

Comments and placement of tokens suggest an interest in restoring the Valley Field area to its prior natural state. This could involve removal of invasive species, native prairie plantings, and a restored native forest where applicable. This sentiment is also reinforced in Question 5 (“Park elements”).

Access + Circulation

21% overall



Walking — 23%

Walking tokens were placed frequently along the park's existing trails, suggesting that the current network meets the needs of pedestrians.



Winter activities — 17%

Comments suggest an interest in cross country skiing and snowshoeing along the Riparian Forest's existing natural trail, and in the Valley Field area.

“ This trail is very popular, in winter and summer, with hikers, trail runners, and mountain bike riders. ”



Map kiosks — 15%

Map kiosks were distributed spatially in a similar way to wayfinding elements, but were more frequently used.



Cycling — 13%

Cycling elements followed similar spatial patterns to walking. This suggests that the trail network should continue to be suited to multiple user groups along the Mobility Corridor.



Hiking — 12%

Participants located the majority of hiking elements both on and off existing trails in the Riparian Forest.



Mountain biking — 10%

Like hiking, mountain biking was frequently located in the Riparian Forest. Tokens placed in the forested area indicate where there is interest in expanding the trail network.



Wayfinding — 8%

Wayfinding tokens were located at major entrances and trail crossroads. The low frequency contradicts the popularity of directional signage in Question 4.



Stairs — 2%

Two stair tokens were placed near the new Terwillegar Park footbridge but were not identified in any other areas.

“ Love the natural beauty in this area. So nice to go biking here. ”

Park Use + Amenities

17% overall



Seating — 29%

Participants were very interested in more seating; tokens were placed frequently at regular intervals along the park's trails and in clusters along the mobility corridor.



Washrooms — 20%

Participants expressed a clear need for washrooms at major park entrances, along the Mobility Corridor, and mid-way through the Valley Field area.



Picnic area — 12%

Picnic areas were commonly placed in the park's open spaces, primarily in the Valley Field area.



Nature play — 11%

Nature play tokens were distributed evenly through the park; their spatial patterns are similar to the nature interpretation category on the following spread.



Enhanced viewpoint — 10%

Viewpoints were desired in sloped areas of the park, including the River Edge and the River Valley Slopes. A small number of tokens were also placed in the Valley Field.



Shelter — 10%

Shelter elements appeared in 3 distinct nodes: near the Fort Edmonton footbridge, in the Valley Field area, and at the Terwillegar Park footbridge entrance.



Multi-use field — <1%

Similarities in placement to the active recreation elements reinforces participants' preference for passive use.



Active recreation — <1%

The small number of tokens in this category suggests that participants prefer passive use of Oleskiw River Valley Park.

“ Love the benches here to get a good view of the river.

Nice to have someplace to sit after biking for 30 minutes.

”



BBQ — <1%

BBQ elements were not used frequently; comments suggested concerns about fire hazards and after-hours use.



Gathering space — <1%

Gathering spaces followed the same spatial pattern as shelter elements. Concerns about after-hours use were raised in the comments.

“ Emphasis should be on maintaining a natural park with habitat restoration.

There are lots of manicured parks for those who want that experience.

”

Atmosphere

12% overall



Nature interpretation — 31%

Nature interpretation was the most popular element under the atmosphere theme, and tokens were evenly distributed throughout the park.



River viewing — 25%

Apart from preservation areas, river viewing was the only element commonly located on the Sand Bar. Further consideration is necessary to ensure harmony between the two uses.



Wildlife lookout — 18%

Wildlife lookouts were distributed throughout the Riparian Forest and the Valley Field areas, as both are known habitats for a variety of species.



Outdoor education — 16%

Outdoor education's spatial patterns roughly aligned with nature interpretation and nature play; this supports the notion of combining these elements.



Heritage interpretation — 7%

A small number of tokens and comments expressed an interest in the history of the Valley Field area.



Art installation — 3%

Participants were not interested in art installations; this sentiment was reinforced in Question 4 ("Park elements").

Areas of Focus

Spatial patterns and areas of clustering emerged as the results of this activity were compiled. The patterns will help guide management and program strategies for the park overall. Clustering of elements will inform decision-making around how to plan activation nodes throughout the park.

Mobility Corridor

This shared-use trail was a popular location for park amenities, particularly seating and washrooms. It was also commonly cited as an important walking and cycling thoroughfare. Comments indicated that waste receptacles and benches should be located at regular intervals along the path.

Fort Edmonton footbridge

Many participants identified this entrance as an important node for park amenities like washrooms and seating, as well as maintenance elements like waste receptacles and regulatory signage. This was also considered an important location for directional signage and map kiosks.

Sand Bar

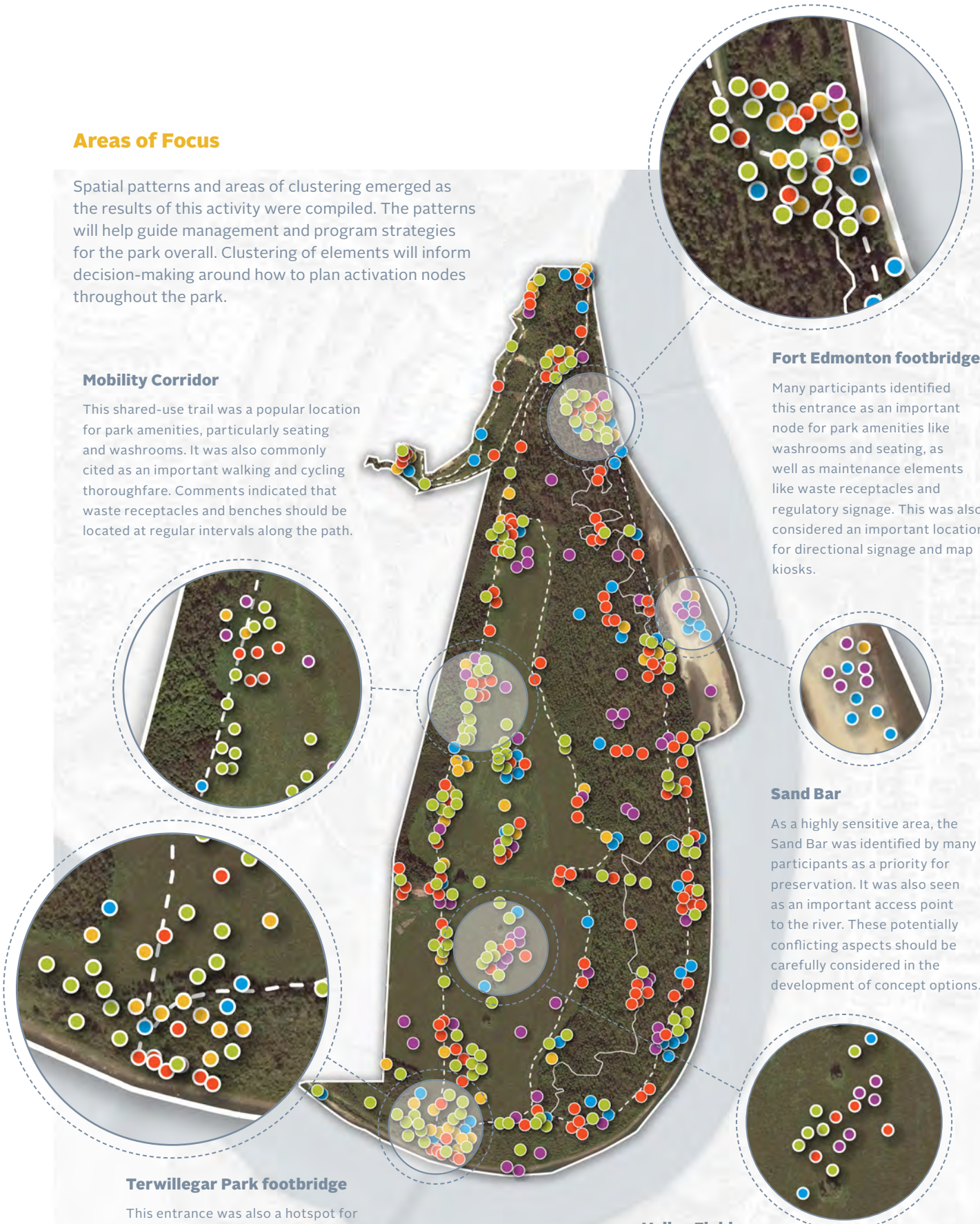
As a highly sensitive area, the Sand Bar was identified by many participants as a priority for preservation. It was also seen as an important access point to the river. These potentially conflicting aspects should be carefully considered in the development of concept options.

Terwillegar Park footbridge

This entrance was also a hotspot for washrooms and seating. Map kiosks and directional signage were prevalent, as well as regulatory signage and waste receptacles.

Valley Field

Many participants saw the unmanaged grass field as an opportunity to restore the native prairie. It was also a popular location for clusters of park amenities like picnic areas.



Question 5

Park elements

- 7124 online survey preferences
- 416 online comments
- 712 open house preferences
- 92 external stakeholder preferences
- 215 internal city staff preferences

This activity received a wide range of support across several categories. The most commonly chosen elements paint a picture of a well-used park that prioritizes preservation while supporting new recreational amenities and diverse uses.

Popular elements like the natural trail and shared use trails suggest an interest in a diversity of users. The “bigger moves” like performance spaces, bird watching towers, and viewing decks were far outperformed by the less invasive options such as informal play, informal river access, and waste receptacles.

Conservational and environmental values reemerged with the popularity of elements like habitat preservation and wetland restoration and protection. An interest in restoring native vegetation was also strongly supported; restored native forest, restored native prairie, and invasive species removal were commonly chosen options.

Preferences for each element were analyzed by the percentage of the total 325 participants who chose it. The following section provides an overview of:

- » Top selected features
- » Preferences and a summary of trends and themes by category

When using this information to inform the Master Plan, the City will consider not only the most frequently identified elements, but the values and sentiments of participants as well as City priorities and environmental sensitivities.



Top Park Elements

by % of participants who chose them

- Park Use + Amenities
- Maintenance + Safety
- Atmosphere + Identity
- Access + Circulation
- Natural Asset Management



75%
natural seating



69%
waste receptacles



66%
informal river access



65%
habitat preservation



63%
directional signage



63%
natural trail



62%
shared use trails



61%
informal play



61%
trail running

Preservation

682 preferences | 20 comments

Habitat preservation was the main priority for participants who value wildlife in the area and want to feel connected to nature when they visit Oleskiw River Valley Park. Comments suggested sensitive riparian zones are a priority for wetland restoration and protection, and that ecological connections could be enhanced through native plants and education on traditional uses. The hay field was proposed as one potential site for the arboretum.



65%
habitat
preservation



52%
enhance
ecological
connections



52%
wetland
restoration +
protection



37%
native
arboretum

Restoration

694 preferences | 22 comments

Restored native forest and restored native prairie were both seen as positive options to include in Oleskiw's existing field area. Comments were generally supportive of all elements, as long as any plantings or invasive removals are well-informed and researched for their benefits and costs. Across feedback there was an interest in re-planting what has grown naturally in Oleskiw River Valley Park in the past.



55%
restored native
forest



54%
invasive species
removal



53%
restored native
prairie



49%
wildflower
planting

Maintenance + Safety

388 preferences | 29 comments

Waste receptacles were one of the most popular elements in this activity. Comments suggested using animal-proof receptacles and locating them near access points so they would be easier for park staff to maintain. Regulatory signage was also supported by participants who want to see shared path etiquette education in the park. A few comments noted that negative or prohibitive language should be avoided to encourage use and positive communication.



69%
waste
receptacle



46%
regulatory
signage

Trails + Pathways

556 preferences | 32 comments

A majority of comments said the existing trail system would be enhanced by a comprehensive mix of trail types. Participants like the look and feel of natural trails, but want to have the more accessible paved and aggregate options available. Comments suggested this would support a diversity of uses, minimize user conflicts, and keep the park accessible to those with mobility issues. Other commenters said paving should be kept to a minimum, and that the existing paved trail is sufficient. Boardwalks raised concerns about increased traffic through sensitive marsh areas.



63%
natural trail



42%
aggregate trail



37%
paved trail



28%
boardwalk

Wayfinding

339 preferences | 29 comments

Participants were strongly in support of updated directional signage in the park. Commenters hoped to see detailed maps with distances and directions that illustrate connections to the full trail system. One comment suggested developing a navigational app for the park. The map kiosk was less commonly chosen because of its larger footprint and greater potential for vandalism, but many thought it would be a good way to incorporate cultural and historical information, or even solar panels.



63%
directional
signage



35%
map kiosk

Gathering Spaces

336 preferences | 27 comments

Natural gathering spaces, both permanent and temporary, were well received by those who want to keep development to a minimum in the park but see the need for more programming and amenities. Comments expressed the desire to keep interventions subtle and blend in with the landscape. Usage of the small performance spaces was questioned by participants who were concerned about a shortage of access points and vehicle access.



37%
natural -
permanent



35%
natural -
temporary



23%
small
performance
space

Picnic Area

440 preferences | 27 comments

The flexibility and small footprint of the informal picnic area was well-liked by participants. However, Oleskiw's remote location and limited accessibility raised safety concerns for the other picnic elements. Some commenters were wary of encouraging after-hours activity with features like the shelter and picnic tables, while others thought the BBQ elements might be a fire hazard and source of air pollution. Several participants agreed that these features would work well with closer parking options and vehicle access points.



47%
informal picnic
area



30%
picnic table



27%
shelter



24%
BBQ

Seating

353 preferences | 26 comments

Natural and bench seating options resonated well with participants. Many liked the low cost, low maintenance, and low impact feel of the natural design; it was the most popular element in the activity. A few comments mentioned the back support offered by the bench option was a positive, and that wooden benches fit better within Edmonton's Winter City Design Guidelines. Participants were generally supportive of viewpoints, as long as they do not become overdeveloped.



75%
natural



39%
viewpoint



33%
bench

Trail Activities

1153 preferences | 27 comments

Shared use trails were frequently chosen for their accessibility and the diversity of activities they offer. Winter options like cross-country skiing and snowshoeing were also well-liked by participants, many of whom do these activities already but would like to see them formalized. Concerns about the speed of skateboarding and rollerblading on a shared use trail were complemented by comments recommending education about shared path etiquette. Many comments in support of mountain biking also called for a separate single track route to avoid user conflicts and provide a more rugged experience.



62%
shared use trails



57%
cycling



56%
cross-country skiing



50%
snowshoeing



46%
mountain biking



34%
fat biking



26%
rollerblading



21%
skateboarding

Nature Play

328 preferences | 14 comments

Informal play was the significantly more popular option in the nature play category, but both elements were supported for their limited impact and potential to build community and encourage interaction with nature.



61%
informal play



34%
community programming

Active Recreation

662 preferences | 39 comments

Trail running was the most popular active recreation element; disc golf and the outdoor gym were less commonly chosen because they were thought to require too much land and investment. The majority of comments were split over the issue of on-leash dog walking. A number of participants supported this option and hoped to see off-leash areas as well, but an equal number commented that they want to keep dogs out of the park altogether.



61%
trail running



30%
orienteering



30%
multi-use field



27%
on-leash dog walking



25%
outdoor gym



14%
disc golf

Stairs + Washrooms

339 preferences | 29 comments

While a strong majority of participants agreed that Oleskiw River Valley Park needs more washrooms, comments were evenly split between those in support of the low-impact pit washroom and those looking for a fully-functioning washroom facility with heat and running water. The small staircase was seen to be less of a necessity.



60%
pit washroom



34%
small staircase

Nature + Education

853 preferences | 25 comments

The most popular elements in this category were those that had the least impact, including nature appreciation, wildlife viewing, and community tree planting. Bird blinds, bird watching towers, and viewing decks were seen to be too much of a man-made intervention for the park. Interpretive signage was well-liked for its benefits to natural, cultural, and indigenous histories, with a few comments mentioning the necessity of regular maintenance to deal with graffiti.



56%
nature appreciation



44%
interpretive signage



43%
wildlife viewing



38%
community tree planting



30%
outdoor learning circle



18%
bird blind



17%
viewing deck



13%
bird watching tower

Landscape Features

296 preferences | 28 comments

Participants responded most positively to indigenous heritage, although several comments stated it should only be incorporated if there is evidence that such features existed on the land previously. Comments suggested the more natural approaches to the landscape taken in the preservation and restoration categories would be more suitable to Oleskiw River Valley Park.



25%
Indigenous heritage



18%
agricultural garden



18%
planting features

River Interaction

310 preferences | 16 comments

Informal river access was strongly supported by participants who were excited to see more people engaging with the river in a natural setting. Several comments also supported its potential for non-motorized river use, such as kayaking and canoeing. The river platform / viewing deck was thought to be less of a necessity, but a nice amenity.



66%
informal river
access



26%
river platform /
viewing deck

Art Installation

286 preferences | 34 comments

Comments in this category suggest that Oleskiw River Valley Park is not the right setting for public art installations. Several participants were of the opinion that the park's natural setting is already inspiring, and that they would prefer upgrades to its amenities instead. Those in support of art installations preferred the temporary nature of winter art programming and hoped that any commissions would be made locally for a reasonable cost.



25%
winter art
programming



21%
all season art
installation



14%
community art
installation

Next Steps

Thank you to all participants who provided feedback for this phase!

The public and stakeholder input received during Phase 2 will help to create the vision statement for the park and will contribute to the park identity. The results of the activities will directly inform the Master Plan as decisions begin to be made for the concept plans.

Write your own vision

The City of Edmonton will use this information to draft a vision statement for the park. The vision statement denotes the public's collective values for the future identity park and will guide decisions around the identity of the park as well as future activities and programs.

Help name this park

Feedback from this question will be used to put forward a recommendation to the City of Edmonton's naming committee for the park.

Create your own park

The public's input will help clarify site specific needs for amenities in the park. Moving forward, the park's environmental sensitivities and physical constraints will be taken into account along with City policy and technical information, while balancing differing public views to develop two unique concept options.

Park Elements

Capitalizing on the emerging trends and patterns from public feedback, the City of Edmonton will work to define the look and feel of the park, creating a future

identity that is reflective of public values, needs and the vision for the park. The identity of the park will also draw from City priorities and respect the regional, neighbourhood, cultural and ecological context.

How did you get here?

This will help the City provide options for how to enhance the Oleskiw River Valley Park experience from various standpoints, including accessibility, park identity, and signage.

Next Steps:

Before the next engagement, the City will create two concept options for the park based on what was heard during the first two engagement sessions. Each option will have common elements that will address the shared needs and values from the public as well as employing unique strategies to respond to a range of differing values and viewpoints that were received.

The proposed activities and park elements will be analyzed with the existing environmental sensitivities to develop options that minimize ecological disturbance. Another important element to the concept options will be integrating the feedback from internal City of Edmonton stakeholders to ensure they are consistent with City policies and operational needs.

In Fall 2017, two concept options will be presented during Phase 3 engagements for public feedback. Input will help to refine the concept options into a final concept plan.

For project updates: edmonton.ca/oleskiwparkmasterplan

Phase 2 Inputs and Results

The activities in Phase 2 of engagement provided us with different forms of feedback, each of which will be used to develop the vision statement and park identity. We will take this feedback into account in conjunction with environmental sensitivities and City priorities as we develop two concept options for the park that will be presented in Phase 3.

