



# RIBBON *of* GREEN

## WHAT WE HEARD REPORT

*Phase 2: Shape the Ribbon | December 2017*

Prepared for  
City of Edmonton

Prepared by  
O2 Planning + Design Inc.

<b>BACKGROUND</b>	<b>2</b>
Introduction	3
Engagement Tactics	5
Communication Tactics	6
<b>INDIGENOUS ENGAGEMENT</b>	<b>8</b>
Indigenous Engagement	9
<b>PUBLIC ENGAGEMENT RESULTS</b>	<b>10</b>
Vision + Priorities	11
Policy Directions	14
Land Management Classifications	16
Amenity Nodes + Trail Network	23
Summary	35
Next Steps	35
<b>APPENDIX</b>	<b>36</b>

## Ribbon of Green Plan (2018) Project Overview

The North Saskatchewan River Valley and Ravine System is the Edmonton region's greatest natural asset and a significant contributor to the quality of life of Edmontonians. Long established as a gathering place for Indigenous Nations and then fur traders, Edmontonians continue to value the conservation and celebration of the natural and cultural heritage of the River Valley.

In 1990, The Ribbon of Green Concept Plan provided a foundation for the planning, management and prioritization of park development within the North Saskatchewan River Valley and Ravine System.

In 1992, The Ribbon of Green Master Plan divided the system into three different areas based on their priority for planning and infrastructure (identified as Priority 1, Priority 2 or Priority 3 areas). It laid out a decision-making framework for Priority 1 and 2 areas and guided the completion of master plans.

Since the completion of the original 1990 and 1992 Ribbon of Green plans, the city has also dramatically grown. What was then a city of just over 600,000 is projected to service a region of 2,000,000. In response, Edmonton is building up, in and out to accommodate this growth. Situated within Treaty 6 territory, the traditional territories of many First Nations, and the traditional homeland of the Métis Nation, Edmonton celebrates the relationship between Indigenous peoples and Edmontonians in meeting the needs of a culturally diverse, rapidly growing, thriving Metro Region.

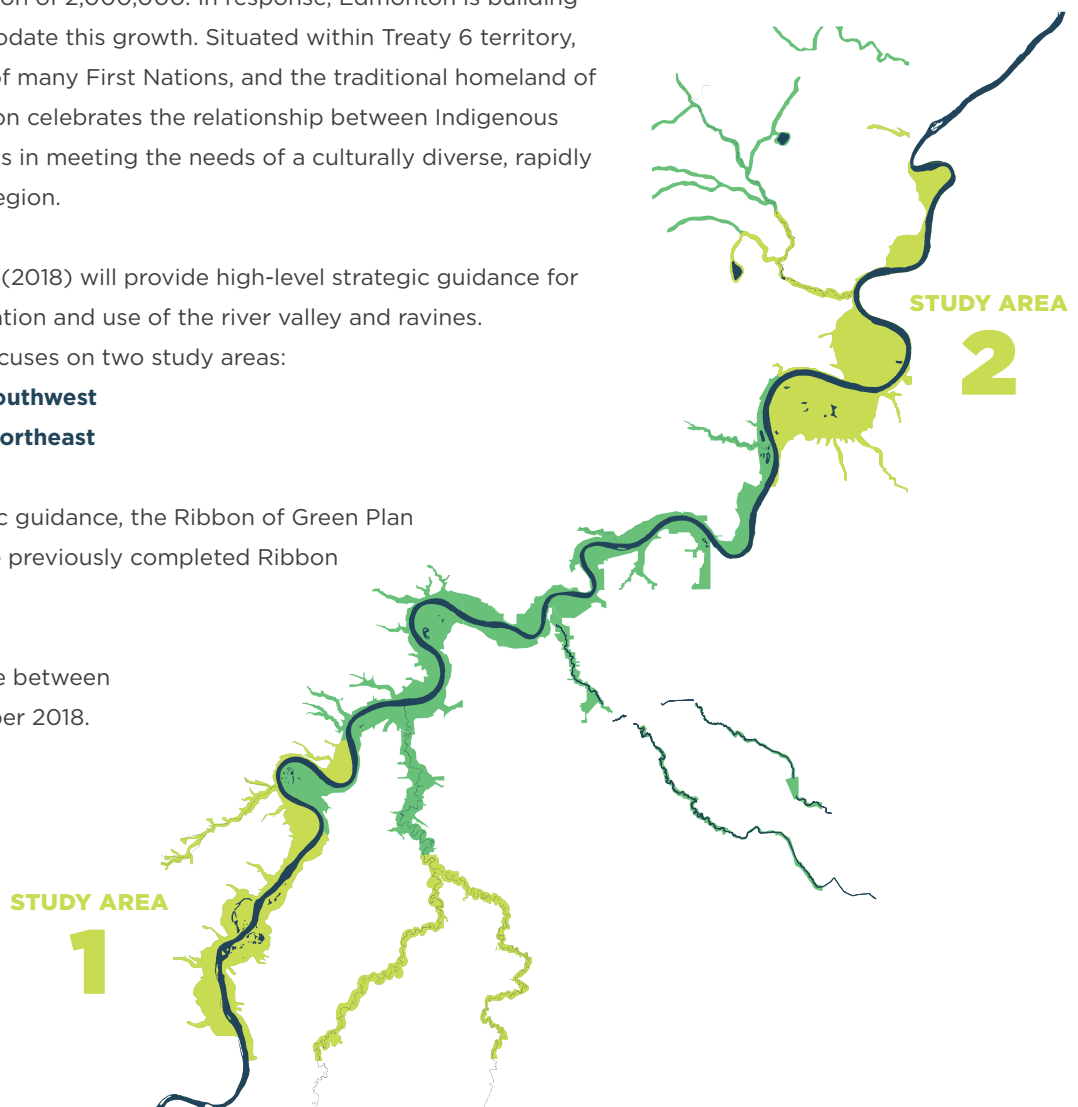
The Ribbon of Green Plan (2018) will provide high-level strategic guidance for the conservation, preservation and use of the river valley and ravines.

Specifically, the project focuses on two study areas:

- > **Study Area 1 in the Southwest**
- > **Study Area 2 in the Northeast**

In addition to this strategic guidance, the Ribbon of Green Plan (2018) will consolidate the previously completed Ribbon of Green plans.

This project is taking place between January 2017 and December 2018.



# BACKGROUND





# INTRODUCTION

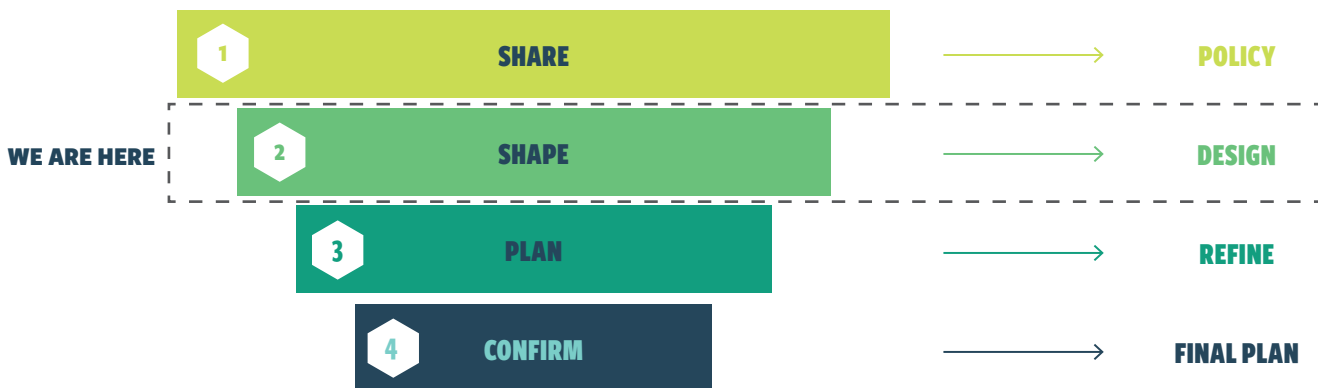
A robust public engagement results in stronger, better-informed projects and the City of Edmonton is committed to excellence in public engagement.

Due to the city-wide scale, regional impacts and timeframe of this project, setting up a network of interlinking engagement activities from the project start is fundamental to the project's success. Specifically, there are four audience streams of engagement: stakeholders, public (online and in-person) and Indigenous. These different groups will be engaged at various times throughout the four stages of active engagement of the project.

The engagement process for Ribbon of Green will take place throughout 2017 and 2018. The engagement is being implemented during four active engagement stages as shown below.

The second stage of public engagement for the Ribbon of Green (2018) project took place in November 2017 to gain insight into the requirements for each study area and the general policies for the Ribbon of Green plan. Feedback gathered at this stage will inform the policy development and visions for the amenity nodes.

This report is intended to be a high-level summary of the ideas and priorities that were collected during the second stage of engagement. While detailed comments and meeting minutes have not been included in this document, they have been recorded and will be used by the project team throughout the upcoming project stages.



## ENGAGEMENT VALUES

The values below guide the engagement process for the public, stakeholders, and Indigenous communities.

**Respect**  
**Honesty**  
**Openness**  
**Inclusion**  
**Cooperation**  
**Learning**

## ENGAGEMENT PRINCIPLES

These principles will anchor our actions and thinking as we engage with the public, stakeholders and Indigenous Peoples:

- > Be open, timely and responsive
- > Listen and share stories to understand
- > Support informed engagement
- > Follow through on commitments

The Ribbon of Green Public Engagement Plan is available at [edmonton.ca/ribbonofgreen](http://edmonton.ca/ribbonofgreen)

The City of Edmonton Engagement Policy is available at [edmonton.ca/documents/policiesdirectives/c593.pdf](http://edmonton.ca/documents/policiesdirectives/c593.pdf)

## STAGE 2 ENGAGEMENT GOALS:

- > To gain feedback from stakeholders and the public about the spatial placement of the planning units and proposed policy directions to support a dialogue about how we can shape the draft concept plan for each study area
- > To spatially understand the culture, history, environment, form, character, use, recreational needs, transportation and movement needs and wildlife and plant life of each study area

## STAGE 2 ENGAGEMENT APPROACH:

The public and stakeholder engagement events and activities were structured into four key areas to share information about the work to date and the collect feedback to inform the next phase of the Ribbon of Green process:

- > **Vision + Priorities:** A vision statement and list of priorities to guide the planning of each study area
- > **Policy Direction:** An overview of policy directions to include in the Ribbon of Green plan
- > **Land Management Classifications:** Classification descriptions to define the physical site conditions, operations, activities and amenities throughout the entire River Valley and Ravine System
- > **Amenity Nodes + Trail Connections:** High-level trail network and sites that present opportunities for a higher level of use and concentration of amenities and programming

# ENGAGEMENT TACTICS

Total  
Participants  625

## OPEN HOUSES

Two open houses were held at community recreation centres in close proximity to each study area and one open house was held at Edmonton Tower for City staff. The open houses were presented as a joint event with the Oleskiw River Valley Park Master Plan (more information available at [edmonton.ca/oleskiwparkmasterplan](http://edmonton.ca/oleskiwparkmasterplan)).

### City Staff

**November 6 | 11:30am – 1:30pm**

Edmonton Tower, Meeting Centre



### Northeast Public Open House

**November 6 | 4-8pm**

Abbotsfield Recreation Centre



### Southwest Public Open House

**November 7 | 4-8pm**

Westridge Wolf Willow Country Club  
Community League



## ENGAGE EDMONTON OPEN HOUSES

During this engagement phase, the City of Edmonton held a series of coordinated public engagement events in locations throughout the city, in which multiple project teams shared information and invited input. The Ribbon of Green team participated in two of these events – one in each study area. Materials were shared in an open house format, and public input was invited on the Phase 2 engagement questions.

### Northeast Open House

**November 23 | 4-8pm**

Archbishop O’Leary High School



### Southwest Open House

**November 14 | 4-8pm**

Blue Quill Community League



## PUBLIC ONLINE SURVEY

The online survey link was posted on the Ribbon of Green project website and provided the public at large with an opportunity to provide their feedback.

**Live from November 6-26**



## EXTERNAL STAKEHOLDER WORKSHOP

For the stakeholder workshop, representatives from multiple diverse organizations were invited, continuing on from their involvement in the Stage 1 stakeholder workshop. In total, representatives from 22 organizations attended. See appendix for the list of organizations that attended.

**November 4 | 10:30am – 2:30pm**

Edmonton Tower, Meeting Centre



## COMMUNITIES OF INTEREST WORKSHOPS

In order to reach communities that may face barriers to participating in conventional engagement activities, the Ribbon of Green team reached out to children, youth and people with disabilities through existing programs to seek their input.

### City Hall School

**October 10 | 2:15-2:45pm**

City Hall, CHS Classroom



### Edmonton Youth Council

**November 1 | 6-6:30pm**

City Hall, Councillors Boardroom



### Accessibility Advisory Committee

**November 20 | 4:45-5:25pm**

City Hall, Heritage Room



# COMMUNICATION TACTICS

The City of Edmonton employed various communication forms, in both print and online, to reach and inform as many residents as possible about the Ribbon of Green engagement events and opportunities. The engagement was advertised through the media outlined below.

---



## Newsletters

- › Ribbon of Green
- › Edmonton Seniors Coordinating Council
- › NextGen
- › Indigenous Relations Community Bulletin



## Twitter

- › @CityofEdmonton — 4 tweets
- › @YEGParks — 1 tweet



## Facebook

- › City of Edmonton — 4 posts



## Ribbon of Green Project Website

- › Ribbon of Green Project Website
- › Communications and Engagement Events Calendar



## Road Signs

- › 7 total
  - › 2 North
  - › 2 Central
  - › 3 South



## Media

- › Public service announcement
- › 1 ad in the Edmonton Journal
- › 1 ad in the Edmonton Metro



## Posters

- › Posted in all City of Edmonton Recreation Centres and Public Libraries



## Postcards

- › Distributed at Public Libraries



## Landowner Mailouts

- › Sent to 913 landowners within the Ribbon of Green study areas



# Amenity Nodes, Trail Heads & Trail Connections | Study Area 1: Southwest



# INDIGENOUS ENGAGEMENT





# INDIGENOUS ENGAGEMENT

## FIRST NATIONS AND MÉTIS WORKSHOPS

From mid-May to end of July, the City met with several communities in a series of Elders and Métis workshops to gather information and insights from Traditional Knowledge Keepers and Elders. These workshops occurred in tandem with site visits for planning of the Oleskiw, Dawson, and Gallagher River Valley Parks. These meetings provided valuable information and advice that will inform the Ribbon of Green project. Please review the following themes that emerged from these engagements for feedback and additional comments.

### **Recognition of Indigenous Peoples:**

First Nations and Metis history, culture and traditional knowledge contributes to the diversity of Edmonton and helps improve the quality of life for all Edmontonians.

### **Significant Cultural/Historical Sites:**

Future park development and construction should plan for the possibility of finding cultural sites, such as burial sites, archaeological remains, and modified/ marked trees.

### **Gathering Places:**

Edmonton needs Indigenous gathering places to practice ceremonies, celebrate, teach and promote culture.

### **Protection of Natural Areas:**

Rivers, streams, wetlands and natural areas are environmentally/culturally significant to Indigenous people.

### **Environmental Stewardship:**

Care of the environment (e.g. monitoring, management, restoration, environmental awareness and education) is important and should involve Indigenous peoples.

### **Traditional Plants:**

There are many natural and undeveloped areas throughout Edmonton that contain traditional plants that are important and sacred to Indigenous peoples and should be protected.

### **Engagement:**

Indigenous communities are interested in early, meaningful in-person and on-site engagement, to share traditional knowledge, identify issues and concerns and collaborate on possible recommendations.

*Indigenous input has helped to inform the land management classification and amenity nodes in the Ribbon of Green.*

# PUBLIC ENGAGEMENT RESULTS





# VISION + PRIORITIES

The Ribbon of Green Vision and Priorities were informed by input received during Phase 1 Public and Stakeholder Engagement. Participants were presented with the top comment categories that Phase 1 participants wished to incorporate into the vision for each study area and were asked to provide their thoughts and feedback. This input will confirm the direction of the proposed vision and priorities and identify whether anything was missed.



## Study Area 1: Southwest VISION + PRIORITIES



### What We Heard

The Vision & Priorities were informed by input received during Phase 1 Public and Stakeholder Engagement. Below are some of the top comment categories that participants wished to incorporate into the vision for the southwest study area.



### What do you think?

Share your feedback on a sticky note here.

Your input will confirm the direction of the vision and priorities and identify whether anything has been missed.



### Vision

A connected and accessible green network that protects the integrity of the ecologically and culturally significant landscape, creates a sense of place through design with nature, and provides opportunities to enjoy and learn about the river valley.

### Priorities

- ECOLOGICAL**
  - Preserve and interpret **unique and important sites, assets and wilderness areas** within the river valley
  - Protect the **ecological integrity** of the River Valley and Raine System
  - Ensure all new **development and use is respectful** of the natural features and areas
  - Balance** recreational, ecological and cultural uses
- HERITAGE + CULTURE**
  - Respect and celebrate **Indigenous heritage and cultural practices**
- ACCESS + TRAILS**
  - Provide **appropriate access** for people of all ages and abilities from the neighbouring communities
  - Improve access** for **active transportation**
  - Create opportunities for **active transportation**
  - Deliver a **continuous trail system** connecting the entire River Valley and Raine System
- VISITOR EXPERIENCE + RECREATION**
  - Create opportunities for **respectful, low-impact recreational opportunities**
  - Give Edmontonians the opportunity to **connect with nature** in the river valley
  - Embrace **all four seasons** of the river valley
  - Embrace **safe and comfortable** enjoyment

## Study Area 2: Northeast VISION + PRIORITIES



What We Heard  
The Vision & Priorities were informed by input received during Phase 1 Public and Stakeholder Engagement. Below are some of the top comment categories that participants wished to incorporate into the vision for the northeast study area.

Your input will confirm the direction of the vision and priorities and identify whether anything has been missed.



### Vision

A connected and accessible green network that protects the integrity of the ecologically and culturally significant landscape, creates a sense of place through design with nature, and provides opportunities to enjoy and learn about the river valley.

### Priorities

- ECOLOGICAL**
  - Preserve and interpret **unique and important sites, assets and wilderness areas** within the river valley
  - Protect the **ecological integrity** of the River Valley and Raine System
  - Ensure all new **development and use is respectful** of the natural features and areas
  - Balance** recreational, ecological and cultural uses
- HERITAGE + CULTURE**
  - Respect and celebrate **Indigenous heritage and cultural practices**
- ACCESS + TRAILS**
  - Provide **appropriate access** for people of all ages and abilities from the neighbouring communities
  - Improve access** for **active transportation**
  - Create opportunities for **active transportation**
  - Deliver a **continuous trail system** connecting the entire River Valley and Raine System
- VISITOR EXPERIENCE + RECREATION**
  - Create opportunities for **respectful, low-impact recreational opportunities**
  - Give Edmontonians the opportunity to **connect with nature** in the river valley
  - Embrace **all four seasons** of the river valley
  - Embrace **safe and comfortable** enjoyment

## STUDY AREA 1: SOUTHWEST

### VISION

A connected and accessible green network that protects the integrity of the ecologically and culturally significant landscape, creates a sense of place through design with nature, and provides opportunities to enjoy and learn about the river valley.

### PRIORITIES

#### Ecology

- » Preserve and interpret unique and important sites, assets and wilderness areas within the river valley
- » Protect the ecological integrity of the River Valley and Ravine System
- » Ensure all new development and use is respectful of the natural features and areas
- » Balance recreational, ecological and cultural uses

#### Heritage + Culture

- » Respect and celebrate Indigenous heritage and cultural practices

#### Access + Trails

- » Provide appropriate access for people of all ages and abilities
- » Improve access from the neighbouring communities
- » Create opportunities for active transportation
- » Deliver a continuous trail system connecting the entire River Valley and Ravine System

#### Visitor Experience + Recreation

- » Create opportunities for respectful, low-impact recreational opportunities
- » Give Edmontonians the opportunity to connect with nature
- » Embrace all four seasons in the river valley
- » Design spaces to promote safe and comfortable enjoyment

## GENERAL FEEDBACK

**Support:** The protection of ecological integrity and the preservation of important sites, assets and wilderness areas received extremely strong support.

**Tensions:** Although people are interested in trail recreation, they also want to make sure it does not harm the environment. All cultures, including Indigenous heritage and cultural practices, should be considered rather than only focusing on one culture.

**Opportunities:** The project could be more focussed by creating one vision and set of priorities, rather than separate ones for each study area.

## ONLINE SURVEY SUPPORT



● Strongly Support ● Somewhat Support ● Neutral ● Somewhat Oppose ● Strongly Oppose

## STUDY AREA 2: NORTHEAST

### VISION

A connected and accessible green network that protects the integrity of the ecologically and culturally significant landscape, building upon the altered sites and conserving the ecologically rich places to create opportunities for new activities and experiences in the river valley.

### PRIORITIES

#### Ecology

- » Preserve unique and important sites, assets and wilderness areas within the river valley
- » Explore opportunities to restore and naturalize areas when possible
- » Protect the ecological integrity of the River Valley and Ravine System
- » Balance recreational, ecological and cultural uses

#### Heritage + Culture

- » Respect and celebrate Indigenous heritage and cultural practices and ways of life
- » Celebrate the agricultural heritage

#### Access + Trails

- » Provide appropriate access for people of all ages and abilities
- » Create opportunities for active transportation
- » Deliver a continuous trail system connecting the entire River Valley and Ravine System

#### Visitor Experience + Recreation

- » Provide multiple experiences for activity, gathering and quiet reflection
- » Explore the restoration and recreation potential of former industrial and resource extraction sites
- » Embrace all four seasons in the river valley
- » Provide opportunities to learn about unique cultural, ecological and geological sites
- » Create opportunities for socializing and celebration

## GENERAL FEEDBACK

**Support:** Protect and preserve the ecology and wildlife assets of the Ribbon of Green. The celebration of agricultural heritage and restoration of natural areas were noted as particularly important priorities for the Northeast.

**Tensions:** Similar to the Southwest, a tension arose between the desire to “leave nature alone” and the potential impact of development and recreation/trail use.

**Opportunities:** Ensure that river and water quality are considered within the ecological priorities.

## ONLINE SURVEY SUPPORT



● Strongly Support ● Somewhat Support ● Neutral ● Somewhat Oppose ● Strongly Oppose

# POLICY DIRECTIONS

General policies will direct the protection and use of the river valley and ravine system by guiding decision making, further planning, design, programming and management. The initial policy directions, categorized into five overarching themes, were provided for feedback. This input will help to further define the policy directions and identify additional considerations to address within the Ribbon of Green policies.

**The complexity of the key factors, ideas, and concerns identified by participants about the policy directions are outlined in the diagram on the following page.** Overall, the general policy direction was highly supported by participants. However, tensions arise between maintaining and protecting the ecological integrity of the river valley and the need and desire for access and recreation. Addressing these tension points and developing appropriate policies that supports these varied intentions will be essential in the development of the Ribbon of Green plan.

## ADDITIONAL FEEDBACK

**ECOLOGY** | Protecting and preserving the ecology of the river valley and ravine system should be the number one priority of the Ribbon of Green. Habitat and wildlife connectivity, as well as ecological integrity, is crucial. The desire to leave the river valley and ravine system as natural as possible is a re-occurring theme throughout the engagement questions.

Citizen stewardship will be integral to maintain and enhance the ecological goals.

Providing clarity of terminology in the plan would be helpful to build awareness of ecological practices.

It is important to build a suitable information/knowledge base to support identifying, researching, inventoring and monitoring areas of high ecological integrity.

**HERITAGE + CULTURE** | Include a diversity of significant cultures in the heritage recognition and cultural use of the Ribbon of Green, along with the recognition of Indigenous heritage and significance. Identify paleontological resources, in addition to historical, cultural and archaeological resources.

**VISITOR EXPERIENCE + RECREATION** | Make the trail system accessible and safe. Wayfinding and information on the area is important for safety and ease of use.

Provide facilities (washrooms, garbage bins) that improve the visitor experience. Facilities should be designed in a minimalist and unobtrusive manner.

**ACCESS + TRAILS** | Easy access to the river valley is essential, including public transit and parking. People love to use the river valley trails through a variety of mediums, and often prefer natural trails. Trail systems should support a variety of uses and be accessible for all users. Focus on access to and appreciation of the river itself by increasing access to the water.

Be strategic about where the river valley is accessed. Sensitive areas should be avoided and difficult to access and quiet, contemplative nature appreciation experiences should be a priority in some areas.

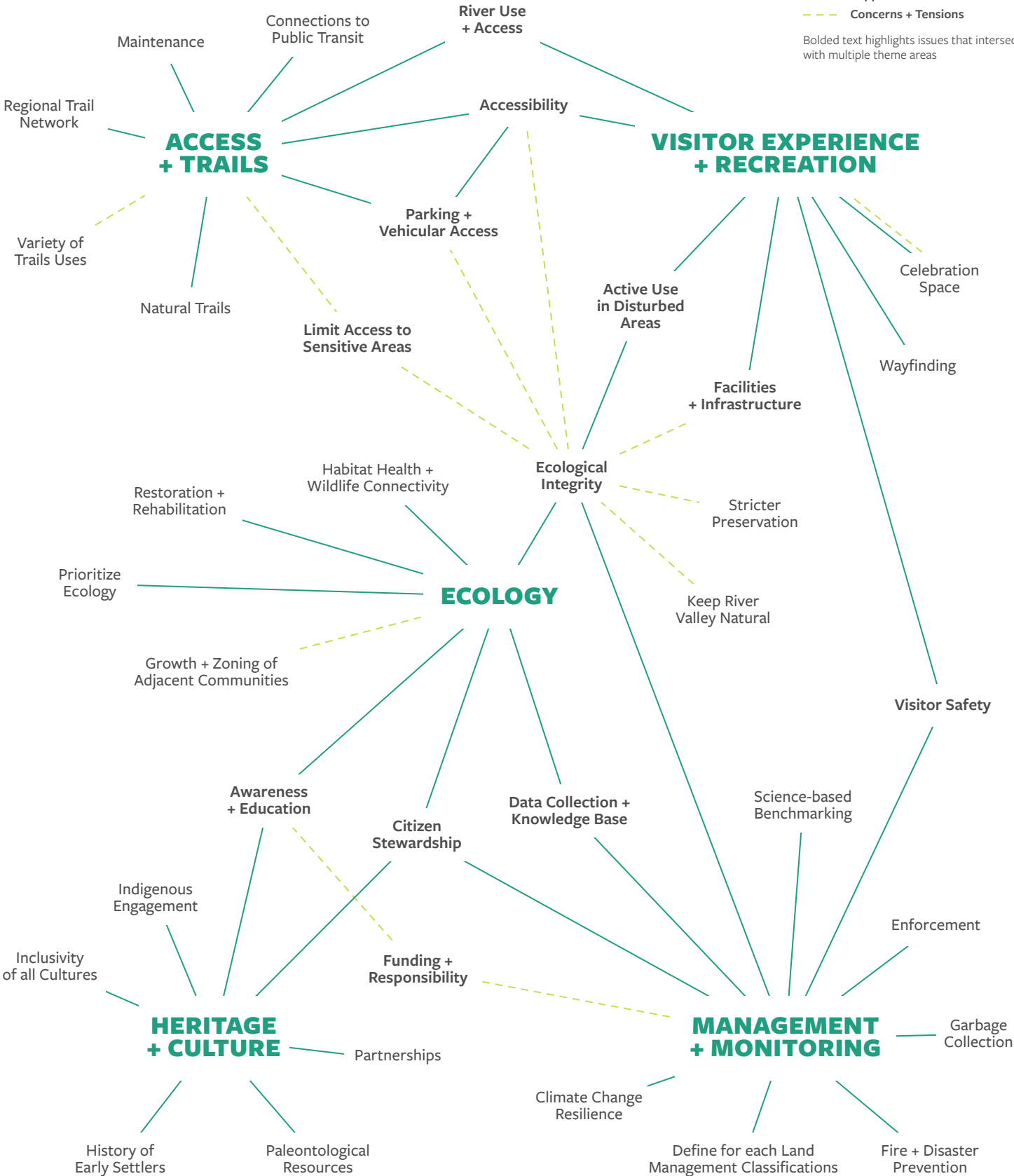
**MANAGEMENT + MONITORING** | Enforce safety and respectful use of the river valley. Develop clear policies to measure and report on successes, improvements and health.

**POLICY DIRECTION INSIGHTS**

— Support + Recommendations

- - - Concerns + Tensions

Bolded text highlights issues that intersect with multiple theme areas





# LAND MANAGEMENT CLASSIFICATIONS

Land Management Classifications define the physical site conditions, operations, activities and amenities within the entire River Valley and Ravine System. These management classifications outline the level of protection or permitted development within each area. Participants were asked to provide feedback on the proposed intent statement, high level policy direction, compatible uses and appropriate facilities and infrastructure for each Land Management Classification. This input will help finalize the classifications.

The online survey provided participants with the opportunity to indicate their level of support for each Land Management Classification and their proposed uses, facilities and infrastructure. Along with the levels of support, the following pages summarize some concerns and recommendations provided by participants. Overall, the classifications are highly supported, with concerns focussed around the level of impact the proposed uses and facilities would have on the natural environment of the river valley and ravine system.



## PRESERVATION

Ecological health and integrity is the primary objective. The intent of the preservation classification is to protect and, when necessary restore, natural processes, key habitat areas, wildlife corridors, and sensitive archaeological/cultural/historic sites to support a healthy River Valley and Ravine System. These areas will remain largely intact except for natural surface trails in appropriate areas and use of these trails will be limited to pedestrians, snowshoeing and cross-country skiing without tracks. Off-trail use is permitted only for research, conservation activities and Indigenous traditional use.

### COMPATIBLE USES:

**RECOGNIZE** | Indigenous traditional use

**LEARN** | Research + conservation related activities | Nature study, observation + photography

**MOVE** | Hiking | Walking | Jogging | Cross-country skiing (non-track set) | Snowshoeing | Dogs (on-leash) | Canoeing/kayaking

### FACILITIES & INFRASTRUCTURE:

**APPRECIATE** | Viewpoints (non-constructed) | Bird blind

**EXPLORE** | Signage (interpretive, wayfinding + regulatory)

**MOVE** | Natural surface trails | Stairs + decks (wood) | Pedestrian bridges

**PROTECT** | Wildlife compatible fencing

## ONLINE SURVEY SUPPORT

*The classification intent received **90% support** from online survey respondents.*

*The proposed compatible uses, facilities and infrastructure received **88% support**.*

## ADDITIONAL FEEDBACK

Most people are concerned with ecological health as a whole, more than anything else. People want to limit the number of surface trails planned in the South West area, though many people also believe that light activity (such as walking and hiking) would be fine in these areas.

### Potential Concerns:

- › Consider fire hazard + risk prevention
- › Provide adequate buffers between Preservation + Conservation areas
- › Limit dogs on-leash
- › Consider impact of pedestrian bridges + stairs
- › Address homeless use in underdeveloped areas

### Other Recommendations:

- › Limit planned trails through sensitive areas
- › Consider watershed + water flow
- › Provide off-trail use \*
- › Allow cycling \*

\* Although these were listed under the Preservation category, these uses are captured within the Conservation classification

## CONSERVATION: TRAIL-BASED RECREATION

This sub-classification balances ecological protection and restoration with providing a connected trail network that provides access from communities to the River Valley and Ravine System and facilitates a range of trail-based activities. This will create an interconnected network of trails offering a variety of trail experiences to support recreation and active transportation, including hiking, mountain biking, horseback riding, cross-country skiing and more. Trails can be natural surface, granular or paved.

### COMPATIBLE USES:

Includes the compatible uses listed under **Preservation**, in addition to:

**LEARN** | Educational programming, including Indigenous storytelling | Nature-based programming, including Indigenous Knowledge and ways of knowing

**MOVE** | Cross-country skiing (track + non-track set) | Active transportation from neighbourhoods to regional destinations | Trail destinations (stacked loops, hiking routes, interpretive trails, etc.) | Cycling + mountain biking | Horseback riding

**EXPLORE** | Orienteering

**PLAY** | Geocaching

**OTHER** | Fishing

### FACILITIES & INFRASTRUCTURE:

Includes the facilities and infrastructure listed under **Preservation**, in addition to:

**APPRECIATE** | Viewpoints + platforms (non-constructed + constructed)

**MOVE** | Stairs + decks | Shared-use paths | Granular trails | Trailheads | Boardwalks

**PROTECT** | Retaining walls

**RELAX** | Seating areas

**OTHER** | Lighting (trail + security) | Low Impact Development (LID)

## ONLINE SURVEY SUPPORT

*The classification intent received **92% support** from online survey respondents.*

*The proposed compatible uses, facilities and infrastructure received **89% support**.*

## ADDITIONAL FEEDBACK

In general, people agreed with the direction of Conservation, however, the distinction from Preservation could be more defined. There was support for natural surface trails and nature-based recreation.

### Potential Concerns:

- › Consider impacts of cycling, mountain biking + horseback riding
- › Limit dogs on-leash
- › Consider impacts of lighting in natural areas
- › Limit development
- › Be accountable for implementation + maintenance

### Other Recommendations:

- › Leave natural
- › Use natural trails, instead of granular, where possible
- › Place washrooms at key locations along the trails
- › Provide specific actions + implementation plan



## CONSERVATION: NATURAL RECREATION

This sub-classification provides opportunities for the public to access, linger, gather, and play in a natural setting while minimizing environmental impact and restoring ecological functioning, when possible. This classification applies to Trail Heads that allow people to prepare for excursions into the river valley or Amenity Node Destinations within the river valley that offer un-structured recreational areas and nature-based programming.

### COMPATIBLE USES:

*Includes the compatible uses listed under **Preservation + Conservation: Trail-based Recreation**, in addition to:*

**PLAY** | Day camps | Unstructured play | Swimming

**GATHER** | Picnicking

**ACCESS** | Vehicular access | River access

**OTHER** | Fishing

### FACILITIES & INFRASTRUCTURE:

*Includes the facilities and infrastructure listed under **Preservation + Conservation: Trail-based Recreation**, in addition to:*

**RELAX** | Warming huts

**GATHER** | Non-bookable picnic sites

**PLAY** | Off leash dog areas (0.5 to 1 ha in size) | Nature + adventure playgrounds | Flexible turfed open area | Activity pad | Hand boat launch

**ACCESS** | Parking area | Park-road | Vehicle turn-around area | Emergency vehicle access

**OTHER** | Lighting (trail + security) | Public art | Drinking fountains | Washrooms

## ONLINE SURVEY SUPPORT

*The classification intent received **90% support** from online survey respondents.*

*The proposed compatible uses, facilities and infrastructure received **85% support**.*

## ADDITIONAL FEEDBACK

People would like to see less/no destruction of the existing river valley, while also providing opportunities for natural recreation.

### Potential Concerns:

- › Listed uses that are not “natural” (eg. horseback riding, off-leash dog areas, lighting)
- › Consider impacts of water access + vehicular access (small, only on edges)

### Other Recommendations:

- › Consider less destructive / more natural recreation activities
- › Opportunity for markets

## ACTIVE/WORKING LANDSCAPES: INTENSIVE RECREATION

The intensive recreation sub-classification accommodates formally designed and maintained parkland that provides more intensive recreational opportunities. These areas have the greatest potential to house multiple activities and services in locations designed to respect and facilitate natural processes, wildlife movement and ecological functioning. A wide range of opportunities to exercise, play and gather in a unique river valley and ravine setting are accommodated on disturbed sites or sites with lower levels of ecological sensitivity.

### COMPATIBLE USES:

Includes the compatible uses listed under **Preservation + Conservation**, in addition to:

**PLAY** | Fitness courses | Niche activities (eg. hot air ballooning, model boating, hang gliding, archery) | Slope based activities (eg. tobogganing, skiing, snowboarding)

**GATHER** | Events + festivals

**ACCESS** | Ice skating

**GROW** | Urban agriculture + gardens

### FACILITIES & INFRASTRUCTURE:

Includes the facilities and infrastructure listed under **Preservation + Conservation**, in addition to:

**GATHER** | Amphitheatres | Bookable meeting + event space | Bookable picnic sites

**PLAY** | Boating facilities + launches (hand launch + motorized) | Spray decks + swimming pools | Sports fields | Climbing structures | Recreation facilities (indoor + outdoor) | Fitness circuits | Skating rinks + trails

**ACCESS** | Mechanized access

**GROW** | Community + formal gardens

**SHOP** | Restaurants + cafés (permanent + temporary) | Ancillary retail

**OTHER** | Aesthetic fountains + water features | Lighting (trail, security, parking lots + aesthetic) | Change rooms

## ONLINE SURVEY SUPPORT

*The classification intent received **81% support** from online survey respondents.*

*The proposed compatible uses, facilities and infrastructure received **77% support**.*

## ADDITIONAL FEEDBACK

The supported recreational uses include trail use, water access (fishing, beaches, swimming), skating rinks and off-leash dog areas. There is also a desire to limit the creation of active recreation opportunities to specific, localized areas.

### Potential Concerns:

- › Limit the ecologically disruptive impacts of Intensive Recreation
- › Consider impacts of river access + use
- › Consider impacts of shops + cafés
- › Limit off-leash dog areas

### Other Recommendations:

- › Limit areas based on research
- › Provide washrooms, change rooms + drinking fountains

## ACTIVE/WORKING LANDSCAPES: AGRICULTURE + HORTICULTURE

This sub-classification recognizes and protects existing farms and agricultural uses. Opportunities to enhance and support local agriculture and food culture are encouraged through food hubs, farm-to-table opportunities, markets, greenhouses, public programs and more. When possible, restoring ecological functioning is promoted.

### COMPATIBLE USES:

**RECOGNIZE** | Indigenous tradition use

**LEARN** | Educational programming (indoor + outdoor)

**MOVE** | Hiking, walking, jogging | Cross-country skiing (track + non-track set) | Snowshoeing | Active transportation from neighbourhoods to regional destinations | Trail destinations (stacked loops, hiking routes, interpretive trails, etc.)

**GATHER** | Food hubs

**ACCESS** | Vehicular access

**GROW** | Agriculture (urban + rural)

**SHOP** | Commercial spaces

### FACILITIES & INFRASTRUCTURE:

**GATHER** | Picnic areas + facilities

**ACCESS** | Parking area, turn-around | Emergency vehicle access

**GROW** | U-picks | Market gardens + stalls | Green houses | Community gardens | Agricultural operations

**SHOP** | Restaurants + cafés (permanent + temporary) | Ancillary retail

## ONLINE SURVEY SUPPORT

*The classification intent received **83% support** from online survey respondents.*

*The proposed compatible uses, facilities and infrastructure received **81% support**.*

## ADDITIONAL FEEDBACK

As with the other classifications, the additional suggestions were to leave these areas minimal and restore disturbed areas.

### Potential Concerns:

- › Consider impacts of commercial uses

### Other Recommendations:

- › Conserve areas where possible

## ACTIVE/WORKING LANDSCAPES: URBAN SERVICES + CITY-WIDE ATTRACTIONS

The urban services and city-wide attractions sub-classification will apply to existing development and high use, city-wide attractions. City-wide attractions can be either indoor facilities or outdoor facilities. What distinguishes outdoor facilities from the intensive recreation sub-classification is controlled access, most often in the form of admission fees. Opportunities for restoration are encouraged in these areas as is a higher standard of environmentally sensitive landscape and building design.

### COMPATIBLE USES:

**RECOGNIZE** | Indigenous tradition use

**LEARN** | Educational programming (indoor + outdoor), including Indigenous storytelling | Nature-based programming, including Indigenous Knowledge and ways of knowing

**MOVE** | Hiking, walking, jogging | Cross-country skiing (track + non-track set) | Snowshoeing | Active transportation from neighbourhoods to regional destinations | Trail destinations (stacked loops, hiking routes, interpretive trails etc.)

**ACCESS** | Vehicular access

**ATTEND** | City-Wide attractions

**OTHER** | Existing development (industrial + other uses) | Urban services

### FACILITIES & INFRASTRUCTURE:

**RELAX** | Campground

**PLAY** | Golf courses | Downhill ski hill

**ACCESS** | Parking area, park-road, turn-around | Emergency vehicle access

**SHOP** | Restaurants + cafés (permanent + temporary) | Ancillary retail

**OTHER** | Power plant | Stormwater management facilities | Water treatment plant | Wastewater treatment plant | Waste management centre | Park operations yard

## ONLINE SURVEY SUPPORT

*The classification intent received **74% support** from online survey respondents.*

*The proposed compatible uses, facilities and infrastructure received **76% support**.*

## ADDITIONAL FEEDBACK

People are most concerned with the impacts that the development of new infrastructure and attractions will have on the river valley,

### Potential Concerns:

- › Consider impacts of development
- › Accessibility of attractions with admission fees
- › Limit golf courses

### Other Recommendations:

- › Limit development to existing disturbed areas

# AMENITY NODES + TRAIL NETWORK

Amenity Nodes and Trail Heads are sites within the river valley and ravine system that present opportunities for a higher level of use and a concentration of amenities and programming. Participants were provided with amenity node locations, site facts, and initial vision statements to help spark ideas for the appropriate experience of each area. Participants also provided input on potential trail connections throughout the river valley.

## TRAIL CONNECTIONS

Participants were asked to provide feedback on the proposed high-level trail network and the connections they would like to see throughout the river valley and ravine system. The maps to the right highlight the locations of desired connection points. In addition to these specific locations, participants also expressed their overall desire for a continuous network throughout the river valley, trails accessible to people with limited mobility, for trail routes connecting to parking and public transit, and paths to safely reach the water's edge.



# STUDY AREA 1: SOUTHWEST





## STUDY AREA 2: NORTHEAST





## AMENITY NODES + TRAIL HEADS

The Ribbon of Green will provide high-level programming requirements and direction for each node, however, a subsequent site planning process will occur for the amenity nodes in the future. Participants were presented with potential amenity nodes locations and a draft vision statement for each. Additional fact sheets were available for further information on each location, if desired. Participants were asked to identify any nodes they would like to add or remove – as well as provide suggestions for the types of experiences they would like to have in each proposed node.

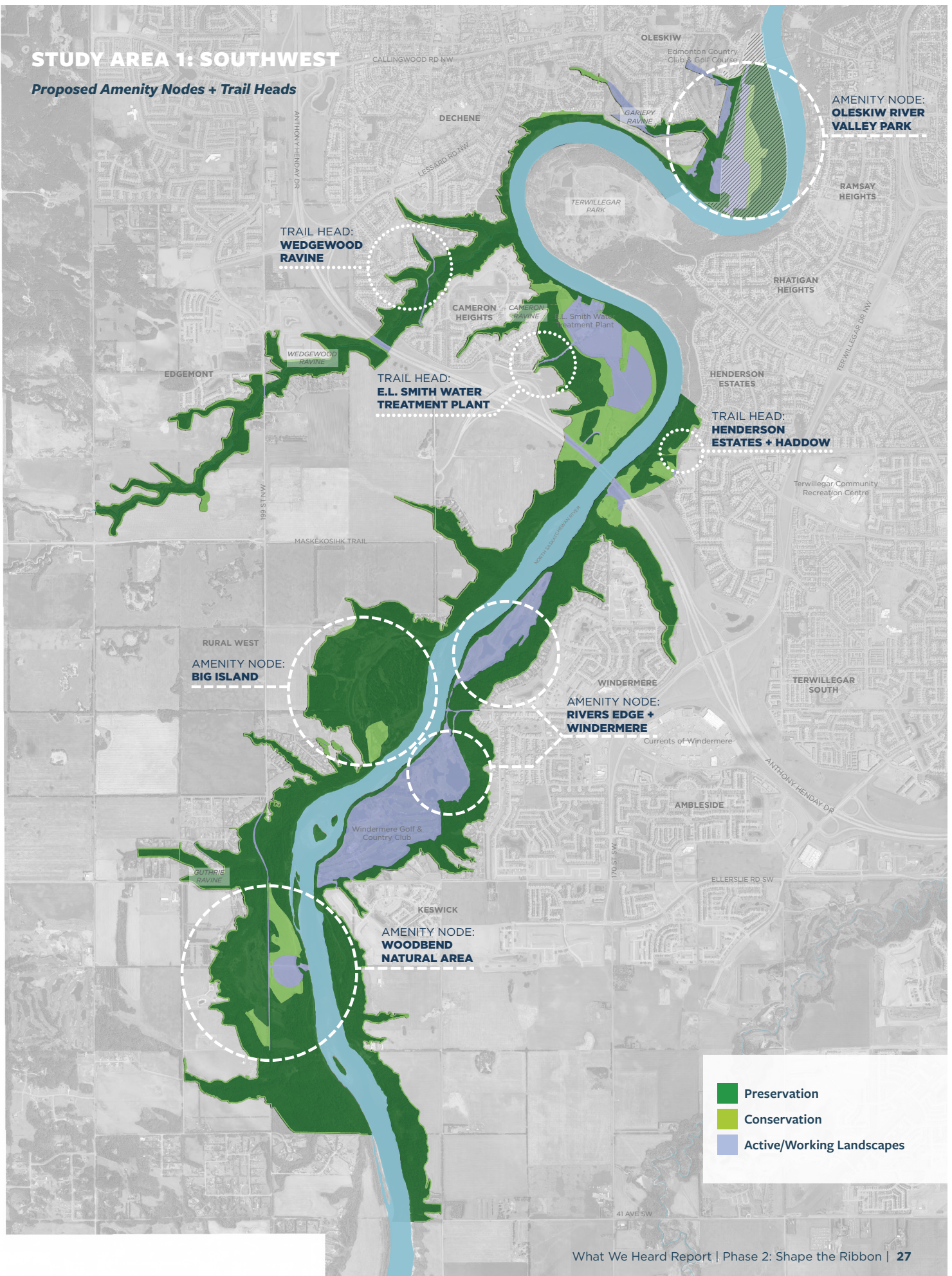
The information and ideas gathered in this phase of engagement about each amenity node will be used to help define the vision for each amenity node and identify the appropriate types of experiences that could be considered for each area.





# STUDY AREA 1: SOUTHWEST

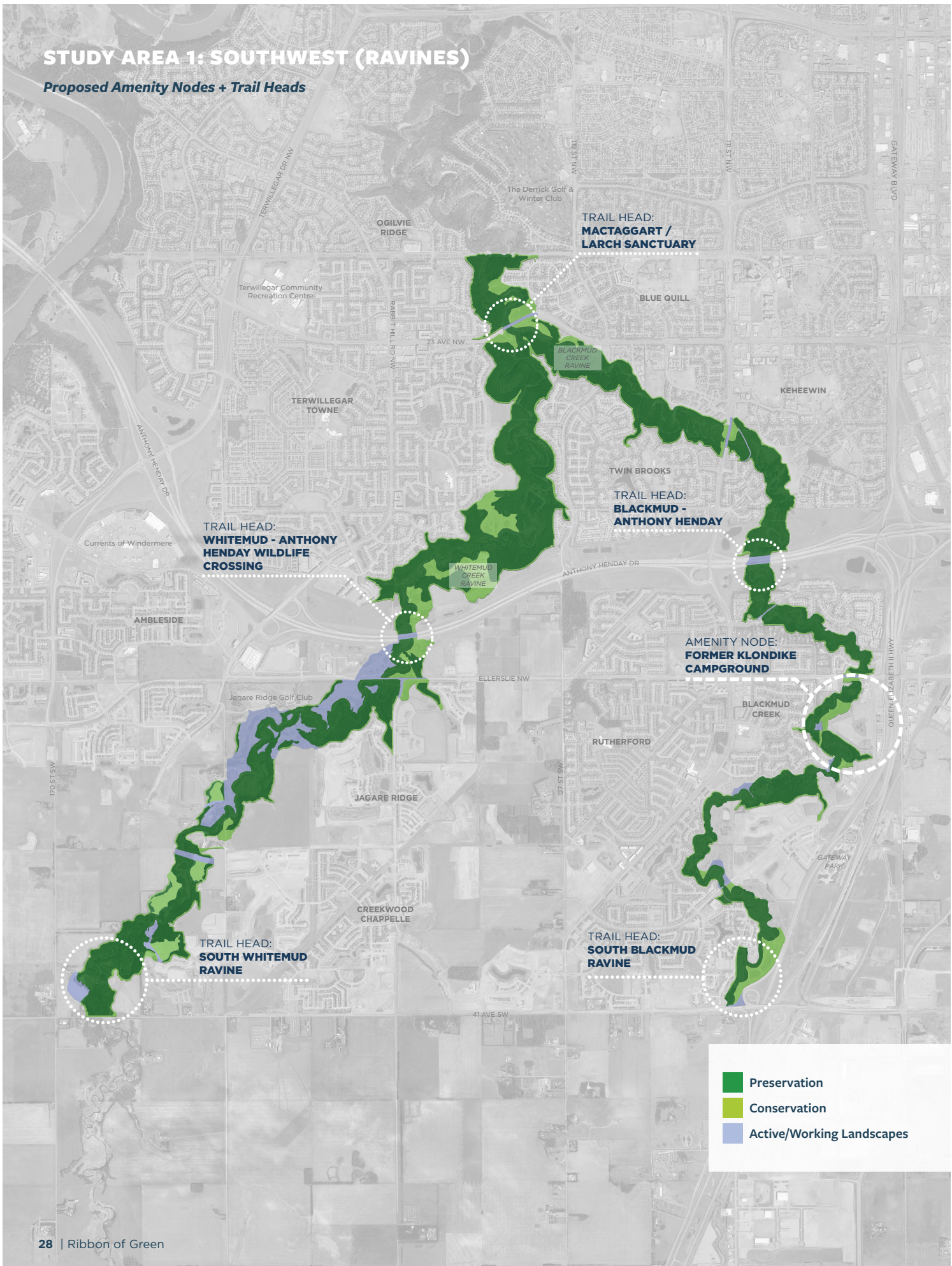
## Proposed Amenity Nodes + Trail Heads





# STUDY AREA 1: SOUTHWEST (RAVINES)

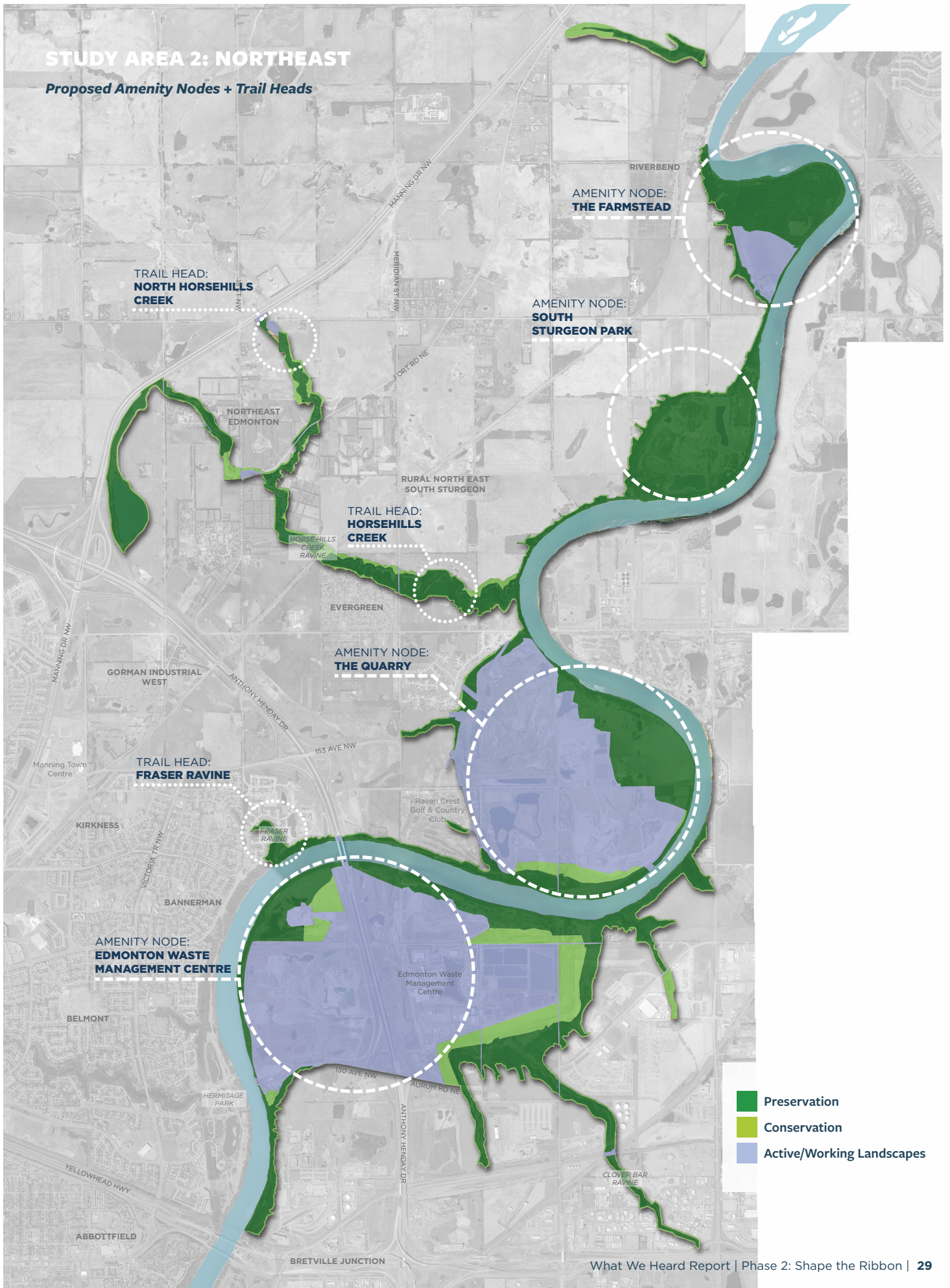
## Proposed Amenity Nodes + Trail Heads





# STUDY AREA 2: NORTHEAST

## Proposed Amenity Nodes + Trail Heads



- Preservation
- Conservation
- Active/Working Landscapes

## STUDY AREA 1: Amenity Nodes

### BIG ISLAND

#### *Proposed Program Statement:*

An opportunity for Edmontonians to interact with nature through trails, picnicking, quiet reflection and relaxation.

#### *Participant Feedback:*

**PROTECT** | Ecological integrity, Low-impact activities, Monitoring + enforcement

**ACCESS** | Public access + connections, Parking, Landing for river users, Footbridge

**EXPLORE** | Trail-based activities, Trail connections

**GATHER** | Campsite

### RIVERS EDGE + WINDERMERE

#### *Proposed Program Statement:*

An opportunity to work with the golf course owners to improve ecological functioning and trail connectivity.

#### *Participant Feedback:*

**PROTECT** | Ecological integrity, Low-impact activities, Monitoring + enforcement

**ACCESS** | Hand launch, Parking, Trails (steep areas)

**PLAY** | Seasonal beach

**OTHER** | Washroom

### WOODBEND NATURAL AREA

#### *Proposed Program Statement:*

Two contrasting spaces – the west side protects, restores and buffers the wetlands while the east side provides an opportunity to gather, enjoy and celebrate and can include a pavilion, event space, lawn, vehicle boat launch and trails.

#### *Participant Feedback:*

**PROTECT** | Ecological integrity, Fire prevention, Noise, Wildlife + wetlands, Keep natural, Remediation

**LEARN** | Native plants

**ACCESS** | Trail connections, Boat launch

**APPRECIATE** | Viewpoint, Enjoy nature

### FORMER KLONDIKE CAMPGROUND

#### *Proposed Program Statement:*

An opportunity to create a unique space that integrates the old campsite layout and markers into a picnic and day use destination in the summer and a skating and/or cross-country skiing destination in the winter.

#### *Participant Feedback:*

**PROTECT** | Creek + riparian areas, Wildlife corridor, Birds + nesting areas, Keep natural

**HONOUR** | Traditional Indigenous use

**GATHER** | Picnic site

## STUDY AREA 2: Amenity Nodes

### THE FARMSTEAD

**Proposed Program Statement:**

An opportunity to promote local agriculture that complements the River Valley context while protecting an old growth forest.

**Participant Feedback:**

**PROTECT** | Restrict development, Keep natural

**LEARN** | Agricultural history + current operation, gardens

**GATHER** | Educational opportunities, Campground

**ACCESS** | Boat launch, River access staging area

**GROW** | Agricultural operations, Community garden

### EDMONTON WASTE MANAGEMENT CENTRE

**Proposed Program Statement:**

A trail destination, boat launch and city-wide attraction in a reclaimed landscape that incorporates bio/clean energy production, carbon sequestration and bioremediation to transform an industrial landscape to a public open space.

**Participant Feedback:**

**RESTORE** | Nature, Trees

**ACCESS** | Hand launch, Hiking, Cross-country skiing

**PLAY** | Kid friendly, Pet friendly, Sportsfield

**GATHER** | Park, Gathering place, Wilderness picnic sites

**LEARN** | Waste management history

### SOUTH STURGEON PARK

**Proposed Program Statement:**

A bird sanctuary where people can enjoy, appreciate and learn about wildlife through a network of trails.

**Participant Feedback:**

**PROTECT** | Nature, Bird blind + nest boxes

**ACCESS** | Trail connections, Boat launch

**MOVE** | Mountain bike trails

### THE QUARRY

**Proposed Program Statement:**

A multi-use regional destination that can offer facilities such as a mountain bike skills course, an event space, an ecological park, a vehicle boat launch and a trail network with opportunities for restoration, re-forestation and re-naturalization of the industrial landscape to improve ecological health and functioning.

**Participant Feedback:**

**PROTECT** | Buffer

**RESTORE** | Constructed wetlands

**ACCESS** | Hand launch

**MOVE** | Mountain biking, Natural trails

**GATHER** | Park, Regional destination

## STUDY AREA 1: Trail Heads

### WEDGEWOOD RAVINE

#### *Proposed Program Statement:*

An important active transportation connection and regional multi-use trail link between Cameron Heights and Wedgewood Heights through a healthy and restored ravine environment.

#### *Participant Feedback:*

**PROTECT** | Ecological integrity, Wildlife corridor, Native species, Beaver dams, Fragile valley slopes, Keep natural, Limit trail access

**LEARN** | Native species

**ACCESS** | Stairs, Pedestrian bridge, Top-of-bank trail

**GROW** | Saskatoon berry picking

### MACTAGGART/LARCH SANCTUARY

#### *Proposed Program Statement:*

An all-season staging area for trail excursions with opportunities for ecological restoration and environmental education.

#### *Participant Feedback:*

**PROTECT** | Wildlife movement + habitat, Monitor native species, Geological features, Sanctuary

**RESTORE** | Archeological sites, Bridge

**LEARN** | Native plants

**ACCESS** | Trail connections

**OTHER** | Washroom, Garbage

### E.L. SMITH WATER TREATMENT PLANT

#### *Proposed Program Statement:*

A staging area for trail excursions and an opportunity for people to learn about water treatment in partnership with EPCOR.

#### *Participant Feedback:*

**PROTECT** | Floodplain, Riparian trees, Wildlife buffer + connectivity

**RESTORE** | Tree planting, Native plants

**ACCESS** | Hand launch, Parking, Connections to other river valley parks

**MOVE** | Bike commute

**OTHER** | Washroom

### WHITEMUD/ANTHONY HENDAY

#### *Proposed Program Statement:*

An opportunity for ecological preservation, in particular wildlife connectivity, while providing an opportunity for people to embark on trail excursions north or south of Anthony Henday Drive.

#### *Participant Feedback:*

**PROTECT** | Wildlife connectivity, Minimal development

**RESTORE** | Reclamation

**LEARN** | Wildlife movement

**ACCESS** | Multi-use/cycling connections, Footbridge

**APPRECIATE** | Enjoy nature

**RELOCATE** | Align trail head with wildlife crossings

### HENDERSON ESTATES + HADDOW

#### *Proposed Program Statement:*

A regional multi-use trail connection that links to broader recreational and active transportation networks with opportunities for historic interpretation, environmental education and ecological restoration where appropriate.

#### *Participant Feedback:*

**PROTECT** | Floodplain, Riparian trees, Wildlife buffer + connectivity

**LEARN** | Environment

**ACCESS** | Boat launch, Trails (walking + cycling)

**RELAX** | Seating

### SOUTH WHITEMUD RAVINE

#### *Proposed Program Statement:*

A gateway to the Whitemud Ravine with opportunities to learn about aquatic habitats, the hydrological system and geology, and gather with friends and family for a picnic and unstructured recreation.

#### *Participant Feedback:*

**PROTECT** | Habitats, Keep natural

**ACCESS** | Trail connections

**OTHER** | Light recreation, Minimal development



## STUDY AREA 1: Trail Heads

### BLACKMUD/ANTHONY HENDAY

**Proposed Program Statement:**

An area for ecological preservation and restoration while providing an opportunity for people to embark on trail excursions north or south of Anthony Henday Drive.

**Participant Feedback:**

**PROTECT** | Wildlife corridor, Limit trail development

**ACCESS** | Natural trails

**RELOCATE** | Currently no developed trails to connect

### SOUTH BLACKMUD RAVINE

**Proposed Program Statement:**

A gateway and staging area for people to explore Blackmud Ravine and learn about aquatic habitats, the hydrological system and geology.

**Participant Feedback:**

**PROTECT** | Keep natural

**ACCESS** | No trails needed

## STUDY AREA 2: Trail Heads

### NORTH HORSEHILLS CREEK

**Proposed Program Statement:**

A gateway and staging area for people to explore Horsehills Creek and the northeast length of the River Valley that includes restored areas and links to the future town centre.

**Participant Feedback:**

**PROTECT** | Keep natural

**ACCESS** | Top-of-bank trails

### HORSEHILLS CREEK

**Proposed Program Statement:**

An opportunity to restore and learn about habitats and wildlife while enjoying an all-season trail network.

**Participant Feedback:**

**EXPLORE** | Natural trails (walking, mountain biking)

### FRASER RAVINE

**Proposed Program Statement:**

A connection between Hermitage Park and the northeast length of the River Valley with opportunities for ecological, geological and wildlife interpretation.

**Participant Feedback:**

**PROTECT** | Erosion

**ACCESS** | Trail connections, Bridge

**Quotes from Phase 2 Public Engagement:**

*“Ecological preservation and conservation should be prioritized over human desire for recreation when the two conflict.”*

*“Parks in an urban context are for people. Nature must be preserved and supported for the purpose of people to have a relationship with and experience in it.”*

*“Create different trail types to accommodate the wide range of trail users – paved shared-use pathways, wide granular trails and natural dirt singletrack trail.”*

*“New trails need to be created through a lens of the environmental sensitivities report and sometimes complete accessibility might have to be sacrificed (in some areas, where appropriate) to ensure that the ecological integrity is preserved.”*

*“If done well, ‘The Ribbon of Green’ will be [a] defining aspect of Edmonton’s international repute and a lasting legacy for generations to come.”*





## SUMMARY

Overall, this phase of engagement received a high level of support from the public and collected valuable insights and ideas to inform the next stages of the Ribbon of Green plan development.

The recurring messages received throughout this stage of engagement identified ecological integrity as a high priority throughout the river valley and ravine system. Trail access, low-impact recreation, and educational opportunities are also highly desired, while still being sensitive to the ecology of the area.

**Thank you for your participation!**

## NEXT STEPS

The feedback from Phase 2: Shape our Ribbon will inform the development of the policies and visions for each amenity node + trail head.

The detailed policies, visions, and proposed trail network will be shared with stakeholders and the public in Spring/Summer 2018 for feedback during the third stage of public engagement — ‘Plan our Ribbon’.

Stay up to date with the project and future opportunities for engagement at [edmonton.ca/ribbonofgreen](http://edmonton.ca/ribbonofgreen)

# APPENDIX

## **LIST OF STAKEHOLDERS**

The following organizations were formally engaged throughout the course of the second stage of engagement.

### **Stakeholder Workshop:**

- › River Valley Alliance
- › The Ridge Community League
- › Edmonton Native Plant Group
- › Edmonton and Area Land Trust
- › River Valley Coalition
- › Edmonton Heritage Council
- › Ceyana Canoe Club
- › Edmonton Mountain Bike Alliance
- › University of Alberta Students' Union
- › Edmonton Nature Club
- › Sierra Club of Canada - Prairie Chapter
- › Canadian Federation of University Women - Environment Group
- › Twin Brooks Community League
- › North Saskatchewan River Valley Conservation Society
- › Edmonton Food Council
- › Riverbend Gardens
- › Dogs Off Leash Ambassador Program
- › November Project
- › Alberta Association of Landscape Architects
- › Canadian Hard of Hearing - Edmonton
- › Edmonton Bicycle Commuters Society
- › Edmonton Rowing Club

### **Stakeholder Meetings:**

- › Edmonton Heritage Council
- › Landowners