



Southeast LRT Open House

www.edmonton.ca/LRTProjects

Welcome

Downtown to Argyll

September 14, 2010



Tonight's Meeting Purpose

www.edmonton.ca/LRTProjects

- To present a *DRAFT* recommended alignment for the LRT within the approved corridor and obtain feedback
- To provide specific details on:
 - *recommended alignment*
 - *station location and configurations*
 - *neighbourhood and pedestrian access*



Proposed Agenda

www.edmonton.ca/LRTProjects

- Welcome and Introductions
- Project Background
- Overall Southeast LRT Alignment
- Segment walkthrough of alignment, station, access and pedestrian recommendations
- Question and Answer



LRT Open House Schedule

www.edmonton.ca/LRTProjects

West LRT

September 7, 2010	Lewis Estates to Stony Plain Road/ 156 Street
September 8, 2010	Meadowlark to Downtown

Southeast LRT

September 14, 2010	Downtown to Argyll Road
September 15, 2010	Argyll Road to Mill Woods Town Centre

www.edmonton.ca/LRTProjects



Southeast LRT Open House
Downtown to Argyll

www.edmonton.ca/LRTProjects

Project Background

Council Approvals to Date

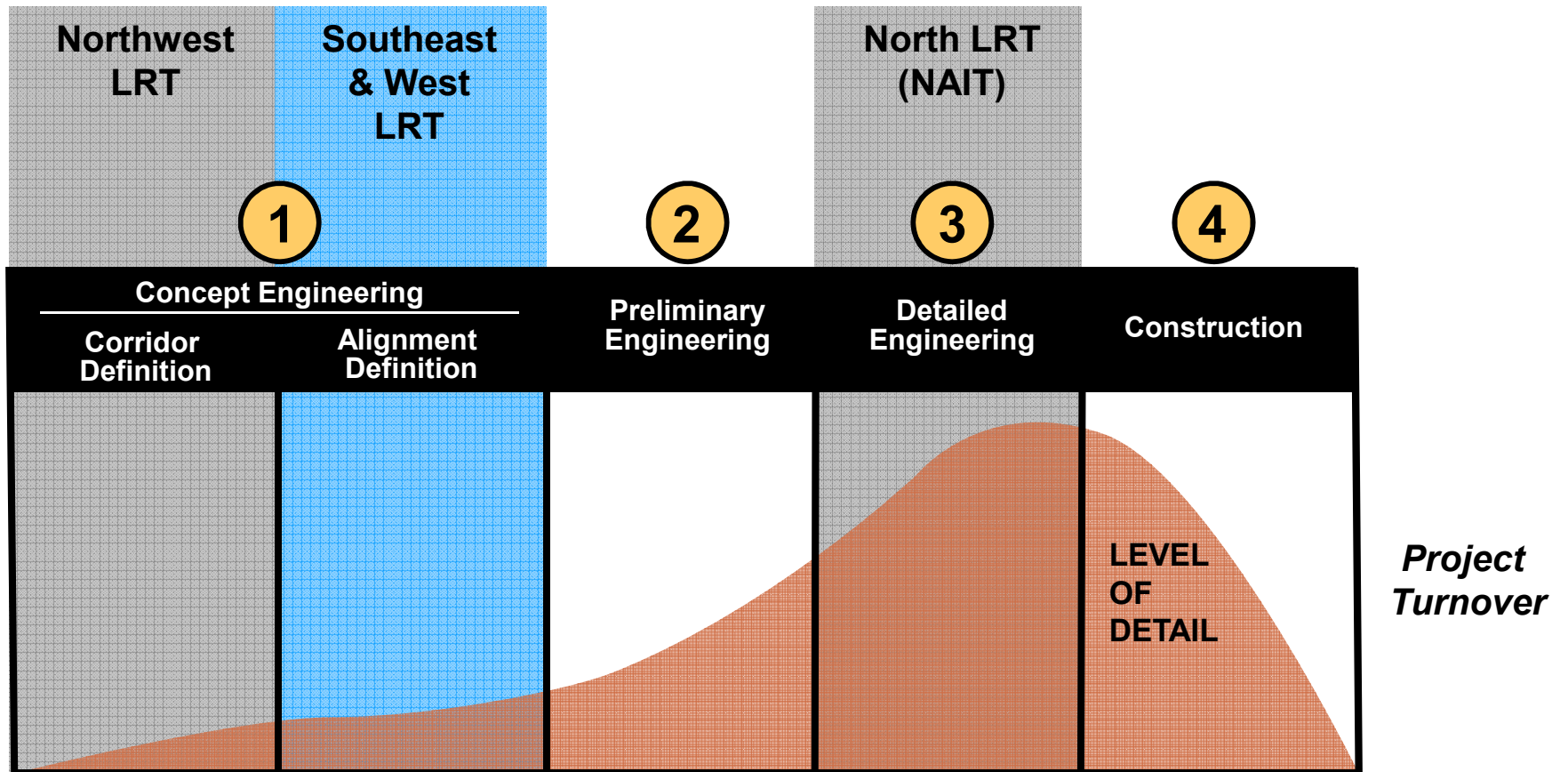
www.edmonton.ca/LRTProjects

- LRT Network Plan (*June 2009*)
- Southeast and West LRT Corridor
(*December 2009*)
- Downtown Corridor
(*June 2010*)



LRT Development

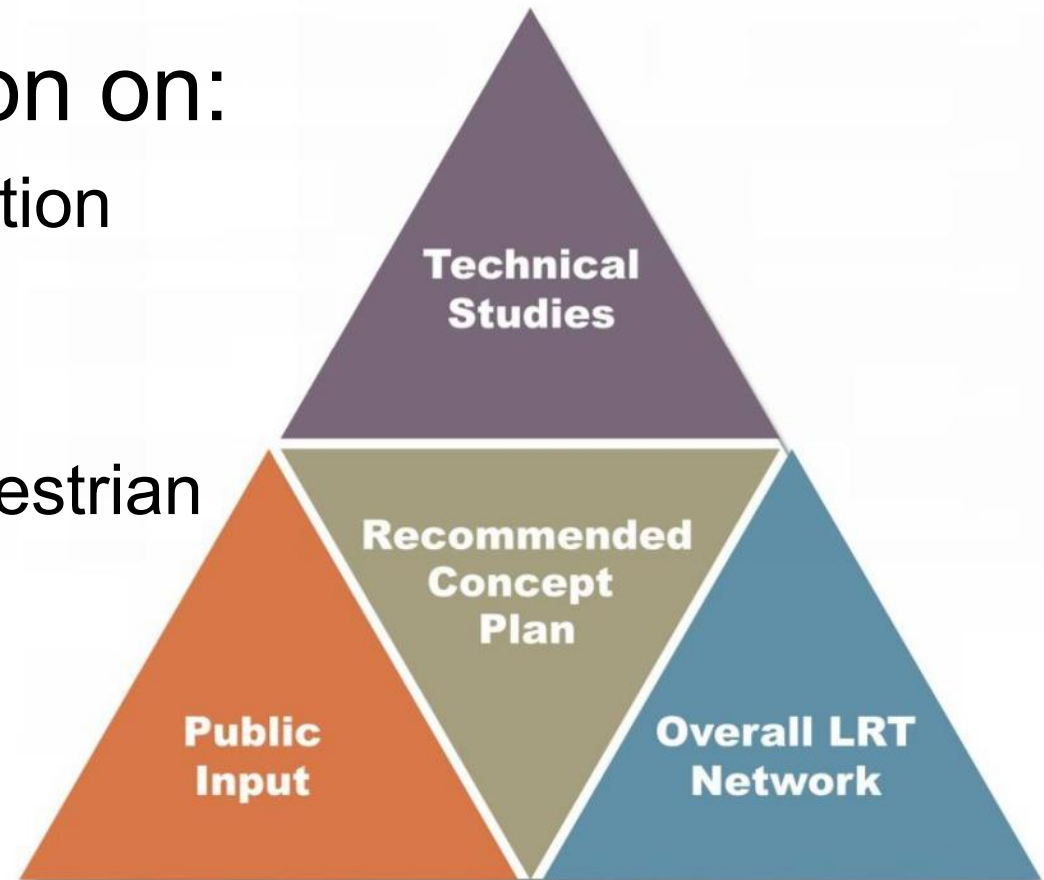
www.edmonton.ca/LRTProjects



Where we are in the process today

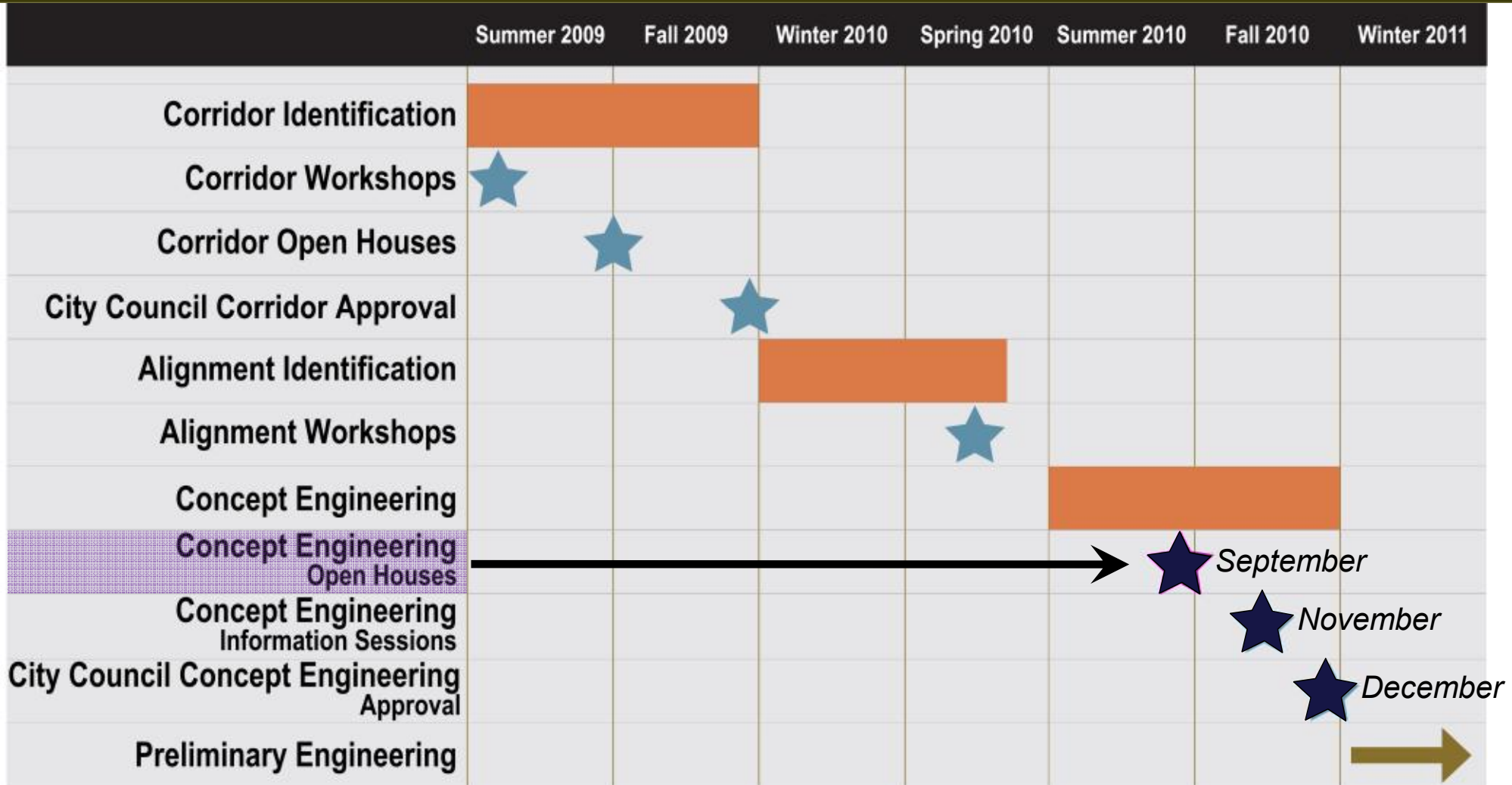
www.edmonton.ca/LRTProjects

- Presenting information on:
 - Alignment Recommendation
 - Station Location and Configuration
 - Neighbourhood and Pedestrian Access
 - Parking Programs



Where We Are Going

www.edmonton.ca/LRTProjects



LRT Network

www.edmonton.ca/LRTProjects



Urban Style LRT

www.edmonton.ca/LRTProjects



Southeast and West LRT Corridors

www.edmonton.ca/LRTProjects





Southeast LRT Open House
Downtown to Argyll

www.edmonton.ca/LRTProjects

Public Involvement Process & Update

Public Involvement Process

www.edmonton.ca/LRTProjects

May/June 2010

- Process built on LRT corridor public involvement process
- 4 location specific workshops to get input on alignment options, station locations, and access management
- Additional meetings held with:
 - community leagues
 - major institutions
 - property owners
 - business owners

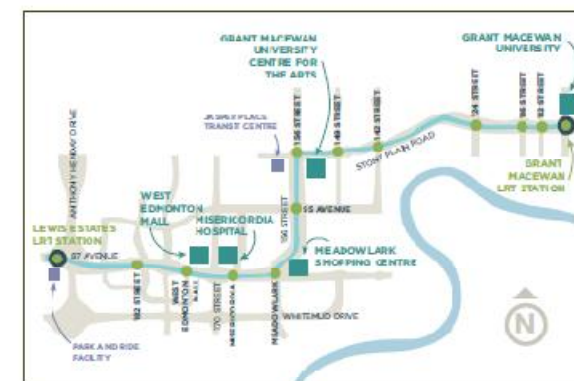
West LRT: Stony Plain Road Business District

Public Meeting for Commercial and Business Owners

We're moving forward. Find out more.

Following a series of public workshops, the City of Edmonton is holding a special meeting to get input from commercial and business owners in the Stony Plain Road business district.

Wednesday, June 23, 2010 | 5:00 PM - 7:00 PM
West End Christian Reformed Church | 10015 - 149 Street



THE CITY OF
Edmonton

TRANSFORMING | EDMONTON
STRONG. HEALTHY. BEYOND MEASURES.



What We Heard

www.edmonton.ca/LRTProjects

Competing Themes:

ensure easy
access into
neighbourhoods



reduce
travel lanes

station location



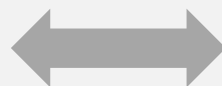
intersection
operations

pedestrian
access across
the roadways



vehicle
travel times

neighbourhood
access



neighbourhood
short-cutting

What We Heard – Next Steps

www.edmonton.ca/LRTProjects

- Minimize construction costs
- Bus system integration - ensure destinations off the LRT corridor are accessible by bus
- Concerned about noise and impact on residential life
- Emergency vehicle access
- Ensure snow removal can be managed
- Minimize potential for crime and risk to personal security
- Preserve or replace landscaping



Responding to Feedback

www.edmonton.ca/LRTProjects

- When reviewing impacts for alignment, used philosophy to balance impact/benefit to communities on both sides of LRT corridor.
- Added signalized pedestrian crossings and intersections at key locations
- Recognizing multi-use trail and cyclist connections





Southeast LRT Open House
Downtown to Argyll

www.edmonton.ca/LRTProjects

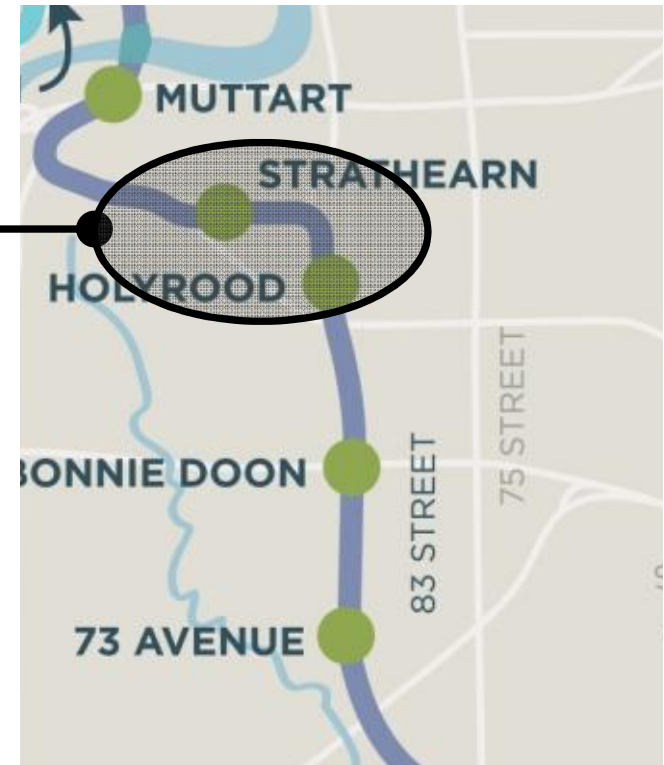
Recommended Alignment

Alignment versus Corridor

www.edmonton.ca/LRTProjects



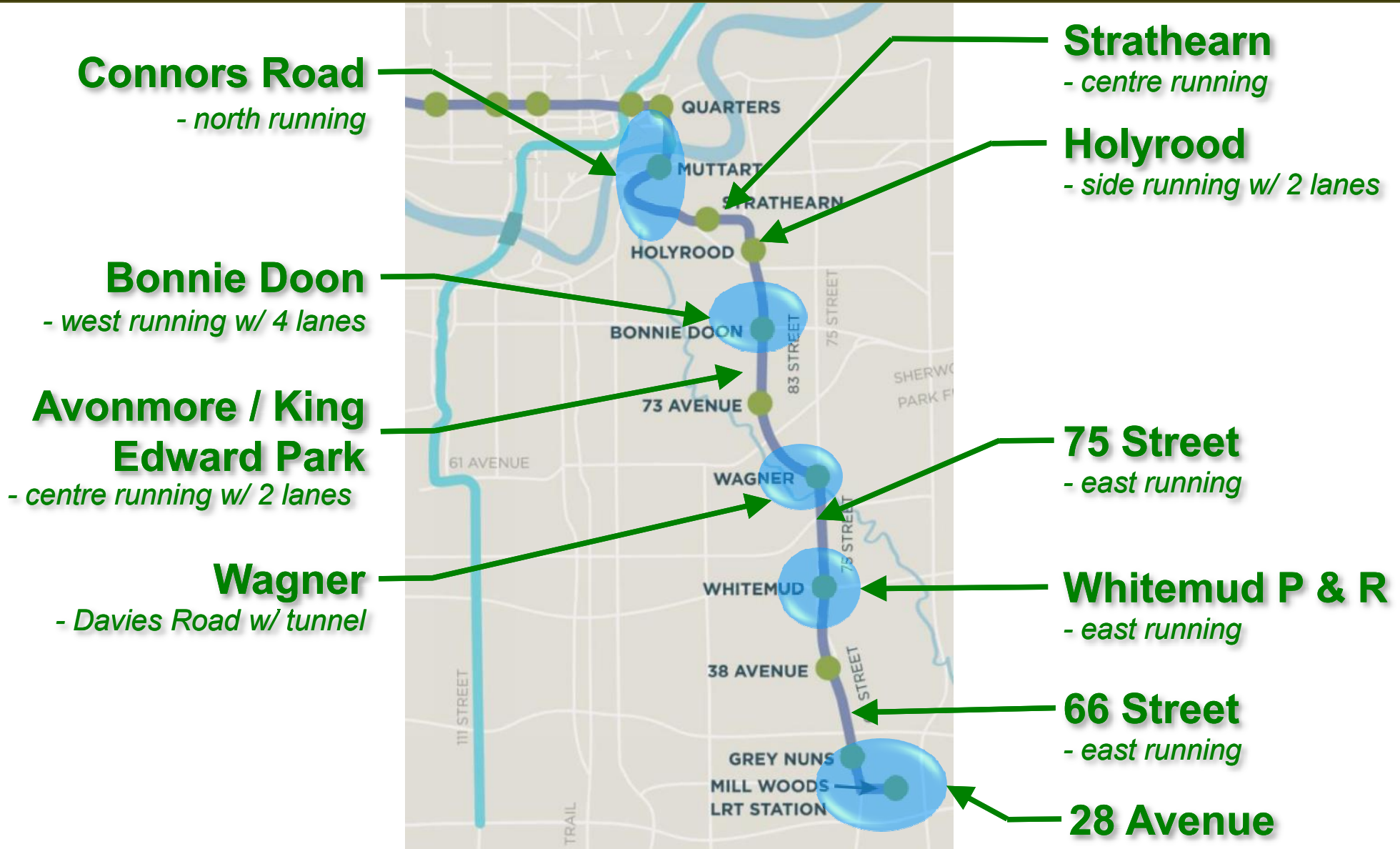
Alignment



Corridor

Recommended Alignment Overview

www.edmonton.ca/LRTProjects



Right-of-Way

www.edmonton.ca/LRTProjects

- There are impacts
- Constrained Right-of-Way
- Minimize property requirements by removing:
 - service roads
 - traffic lanes
 - on-street parking



Simple Stop Design

www.edmonton.ca/LRTProjects

Low floor vehicles and platforms provide:

- Simple infrastructure
- Best fits into surrounding areas
- Improved neighbourhood connections

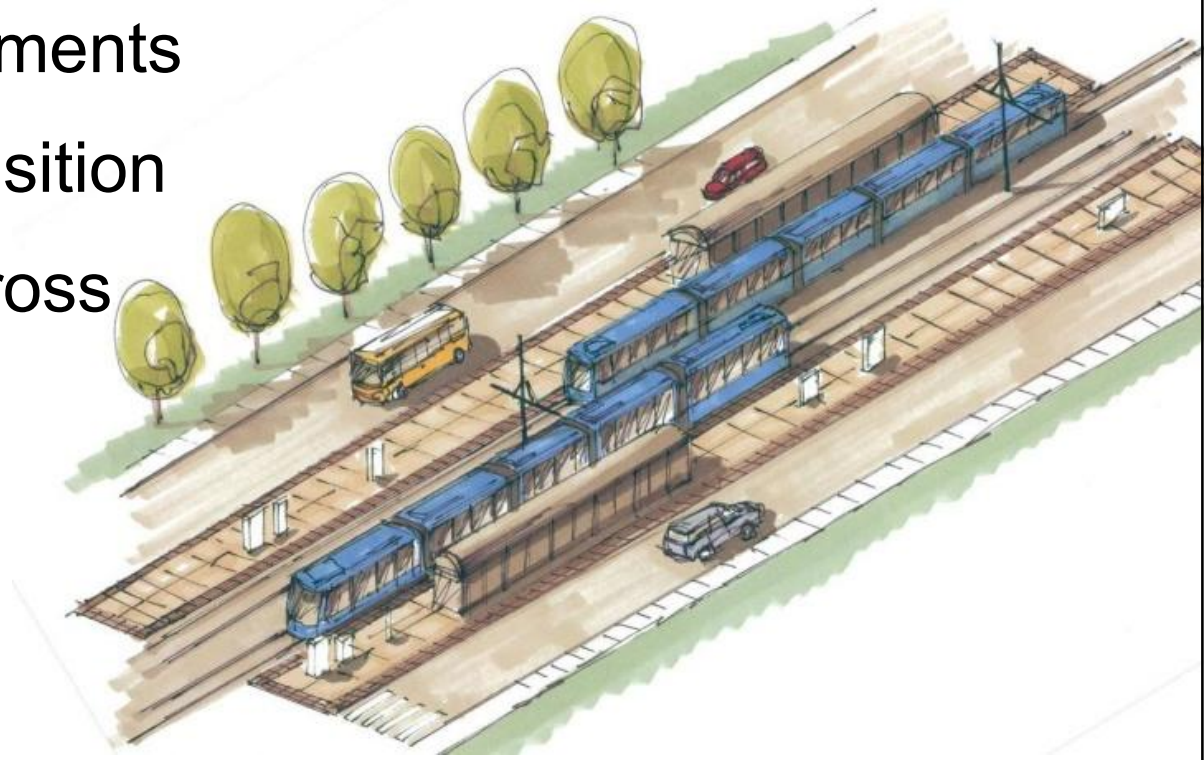


Station Configurations

www.edmonton.ca/LRTProjects

Stations located to:

- Balance access requirements
- Minimize property acquisition
- Provide consistency across the system
- Serve activity centres



Neighbourhood and Business Access

www.edmonton.ca/LRTProjects

Basic Principles:

- Turns across LRT tracks will be at signalized intersections
- Traffic signals will be located on major roads to balance access needs and train movement
- Access will be maintained using the supporting street and circulation system



Pedestrian Access

www.edmonton.ca/LRTPProjects

- Pedestrian movements provided at certain locations to maintain existing connectivity where feasible
- Pedestrian only crossings could have various methods of warning and control





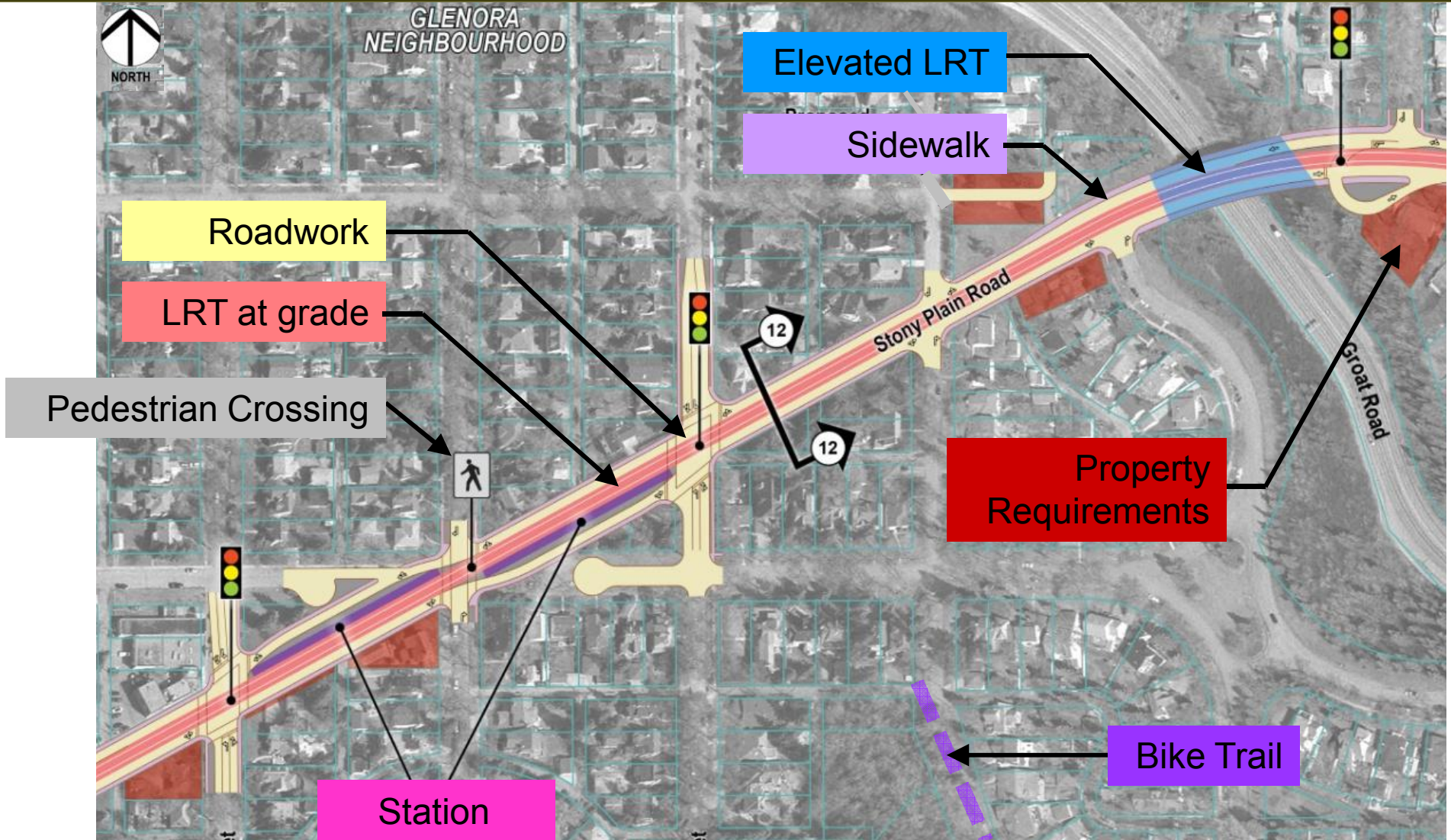
Southeast LRT Open House
Downtown to Argyll

www.edmonton.ca/LRTProjects

Segment Walkthrough

Legend / Key

www.edmonton.ca/LRTProjects

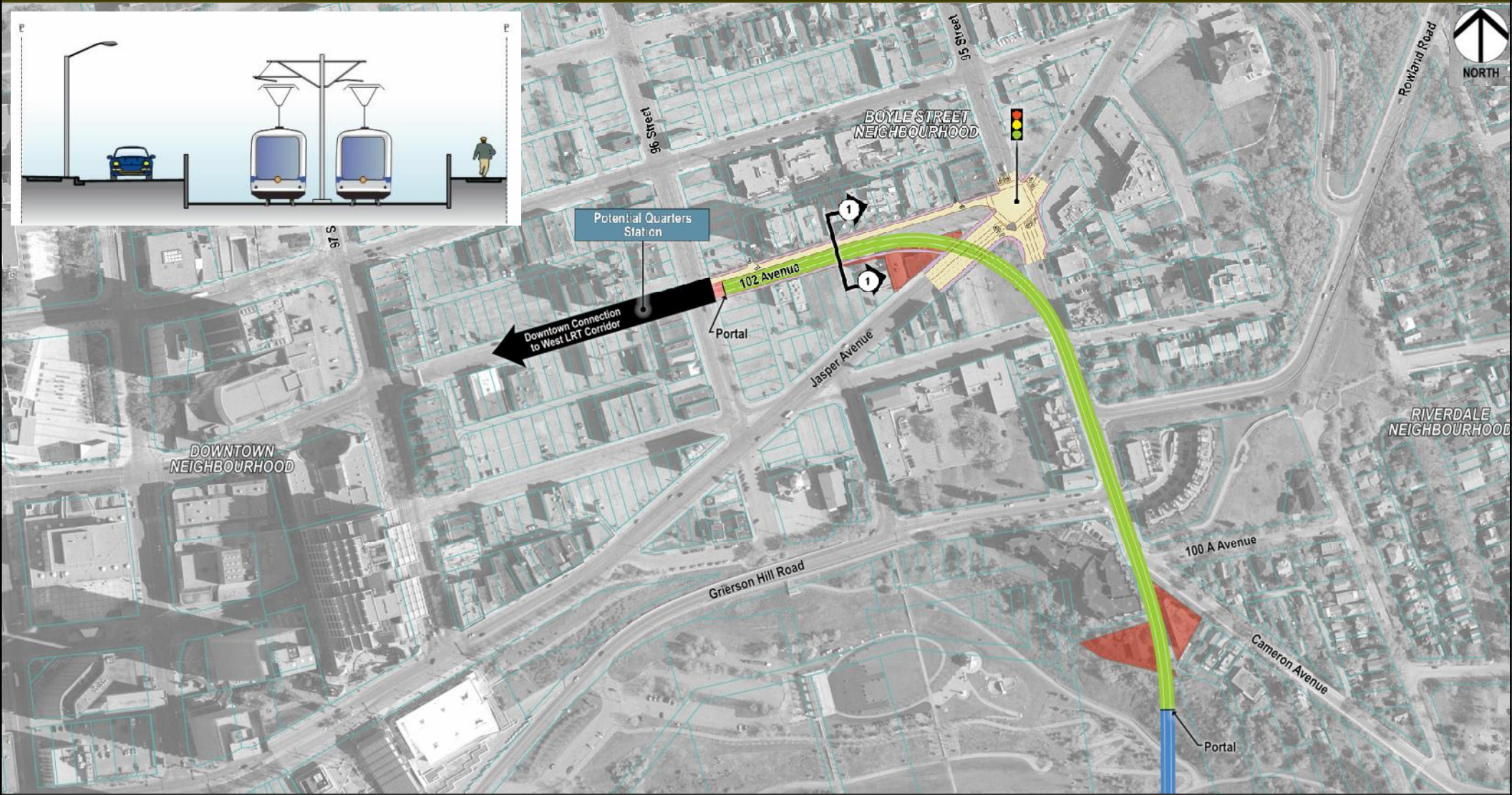
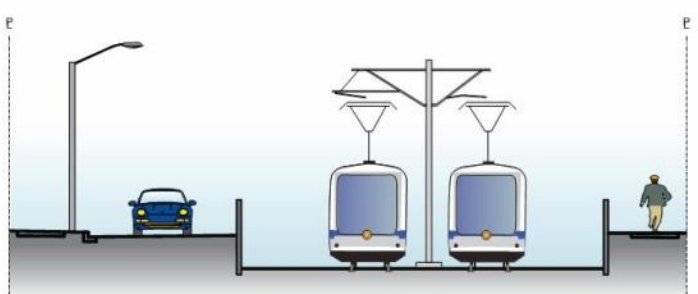


LRT Below Grade (*not shown*)

Alignment / Stations – Quarters

www.edmonton.ca/LRTProjects

subject to change

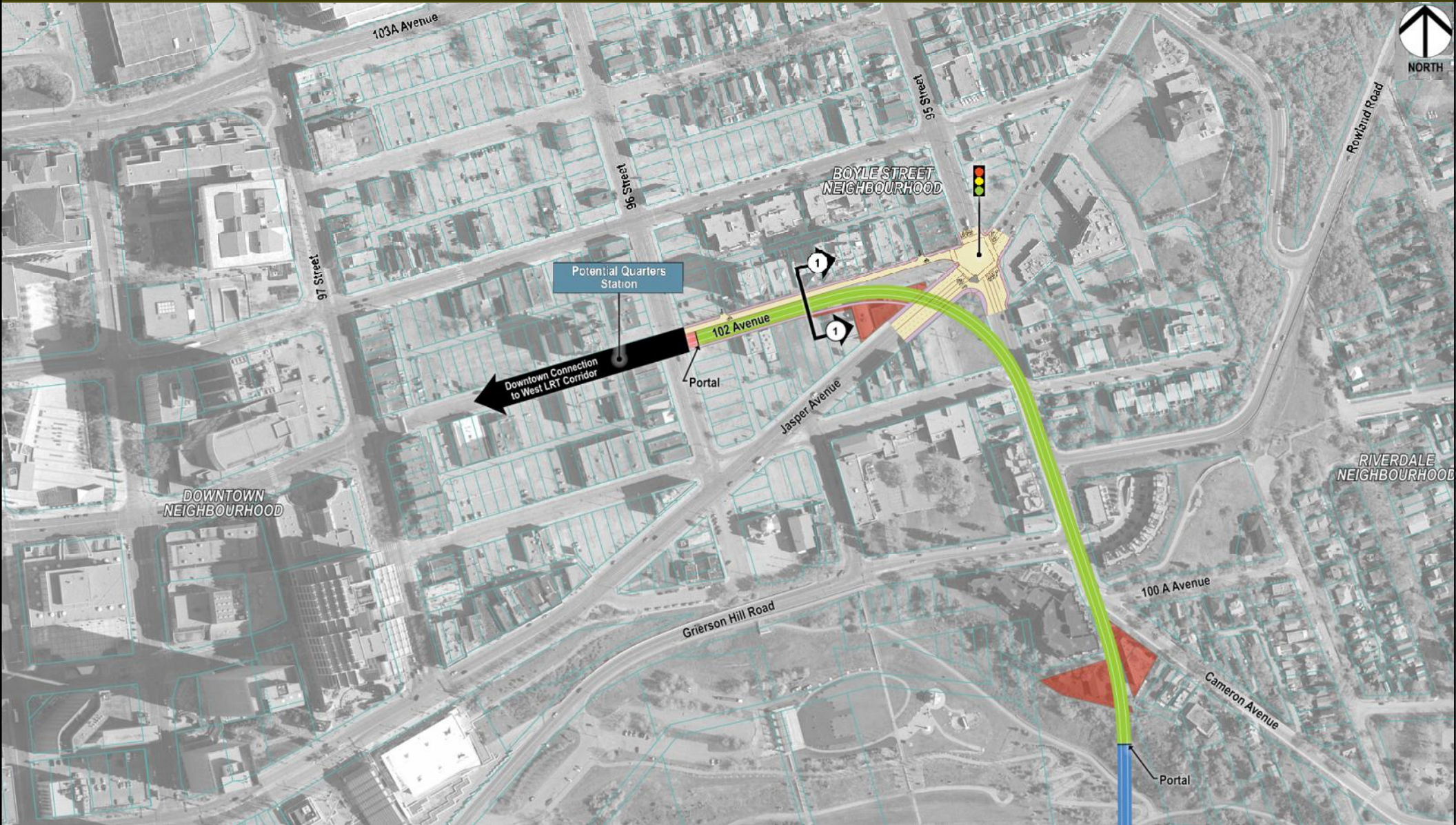


LRT Below Grade

Access – Quarters

www.edmonton.ca/LRTProjects

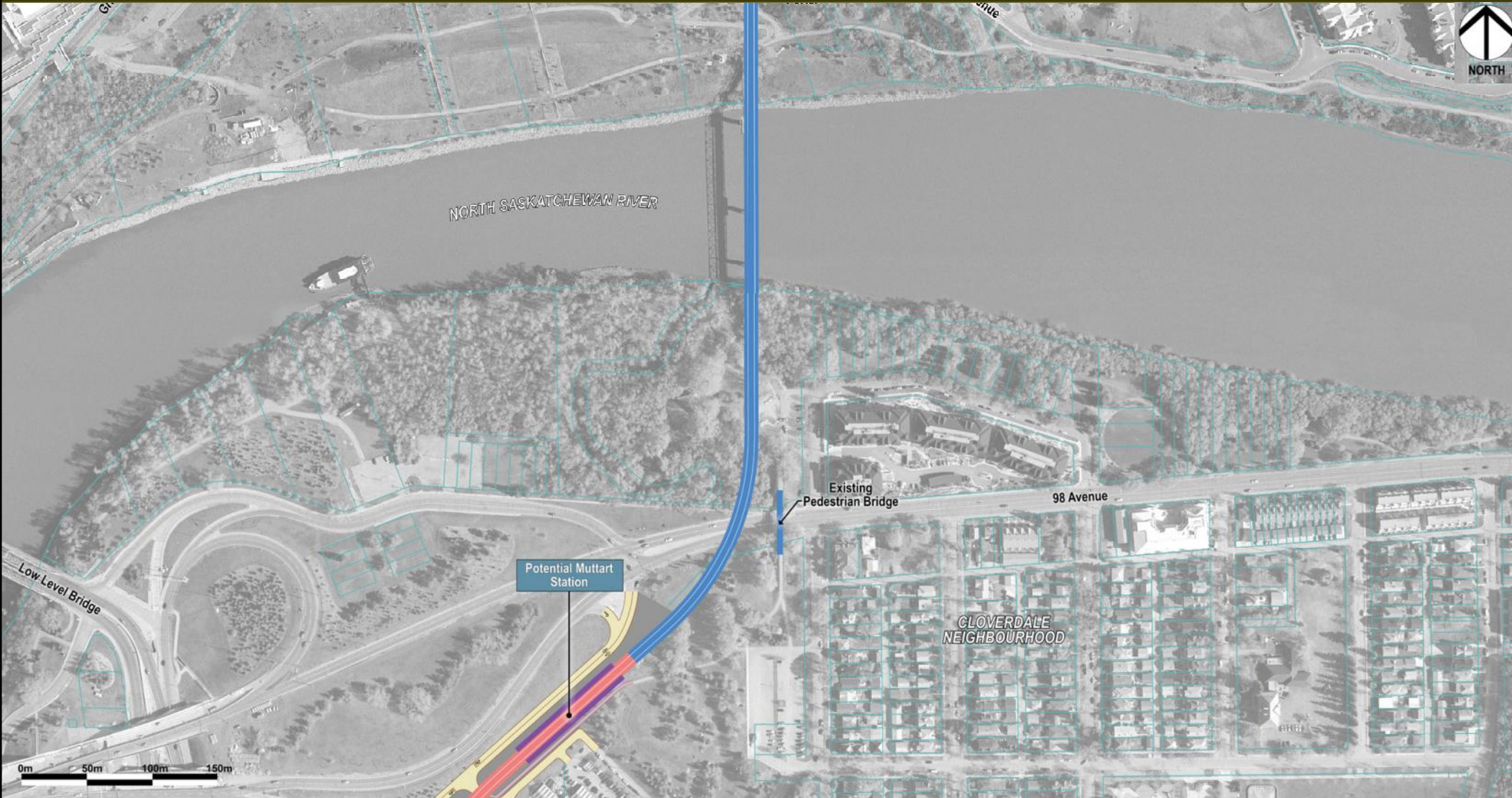
subject to change



Alignment / Stations – North Saskatchewan River

www.edmonton.ca/LRTProjects

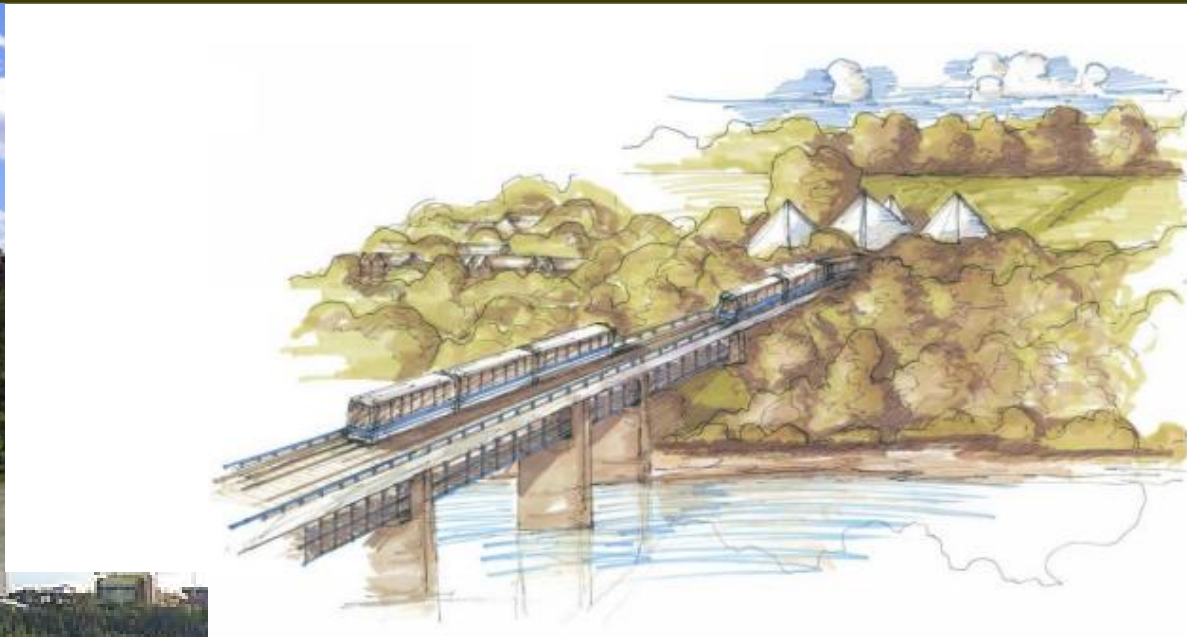
subject to change



Elevated LRT

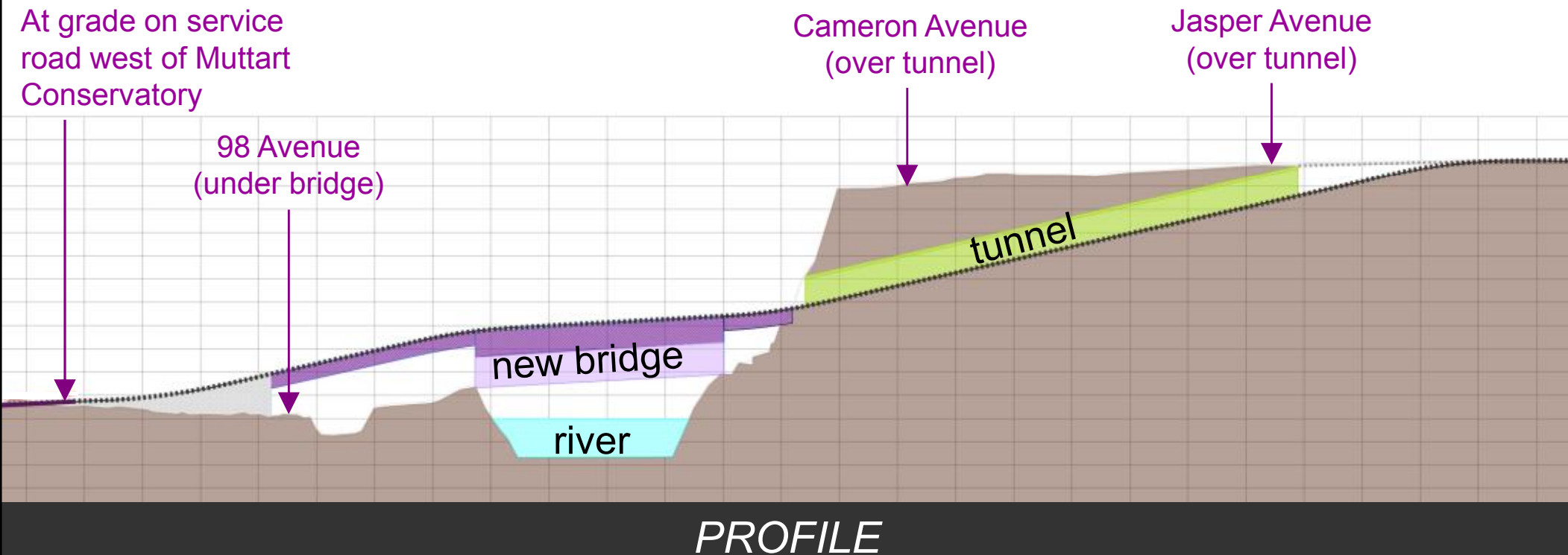
Pedestrian and LRT River Crossing Examples

www.edmonton.ca/LRTProjects



North Saskatchewan River Profile

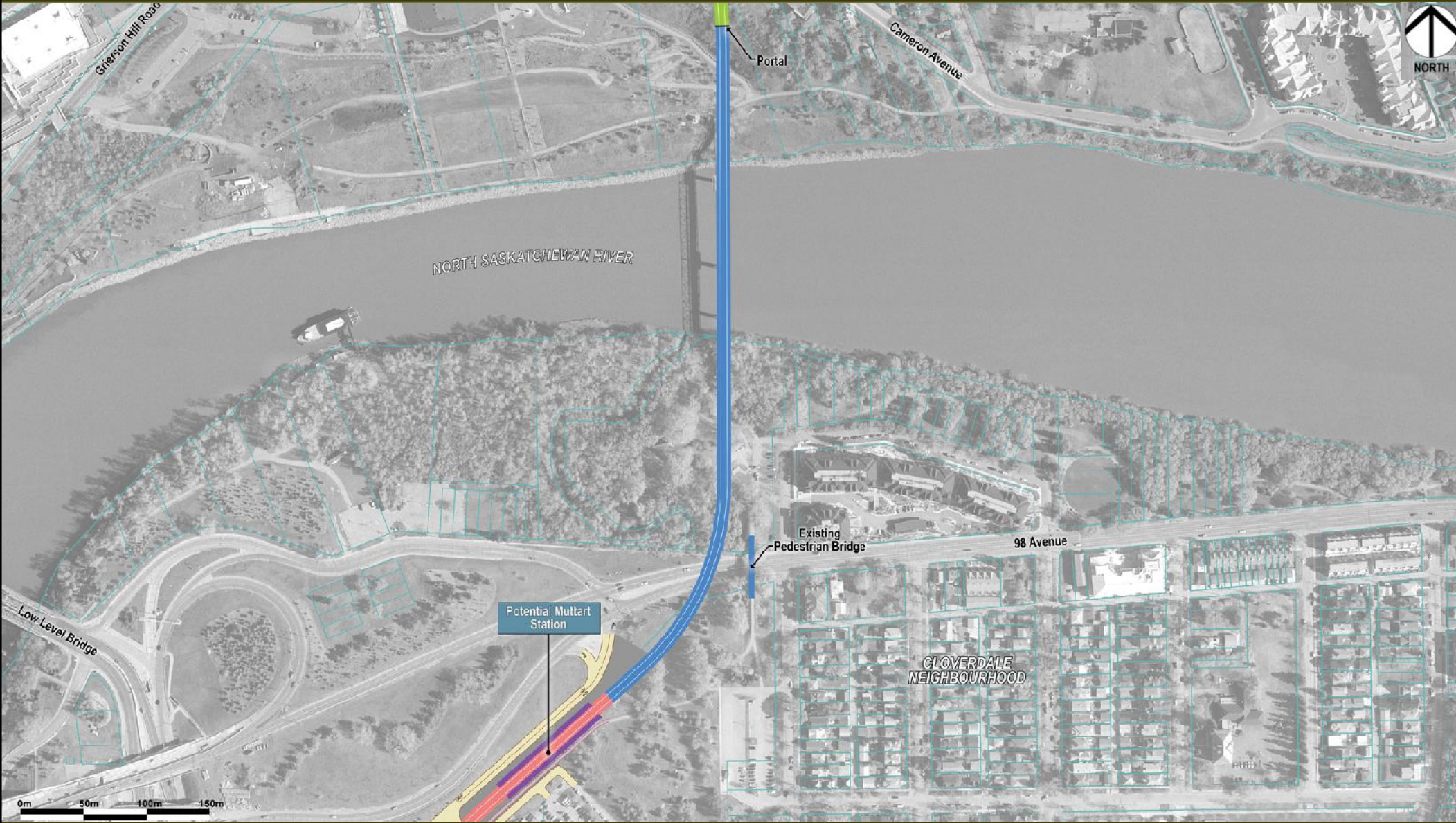
www.edmonton.ca/LRTProjects



Access – North Saskatchewan River

www.edmonton.ca/LRTProjects

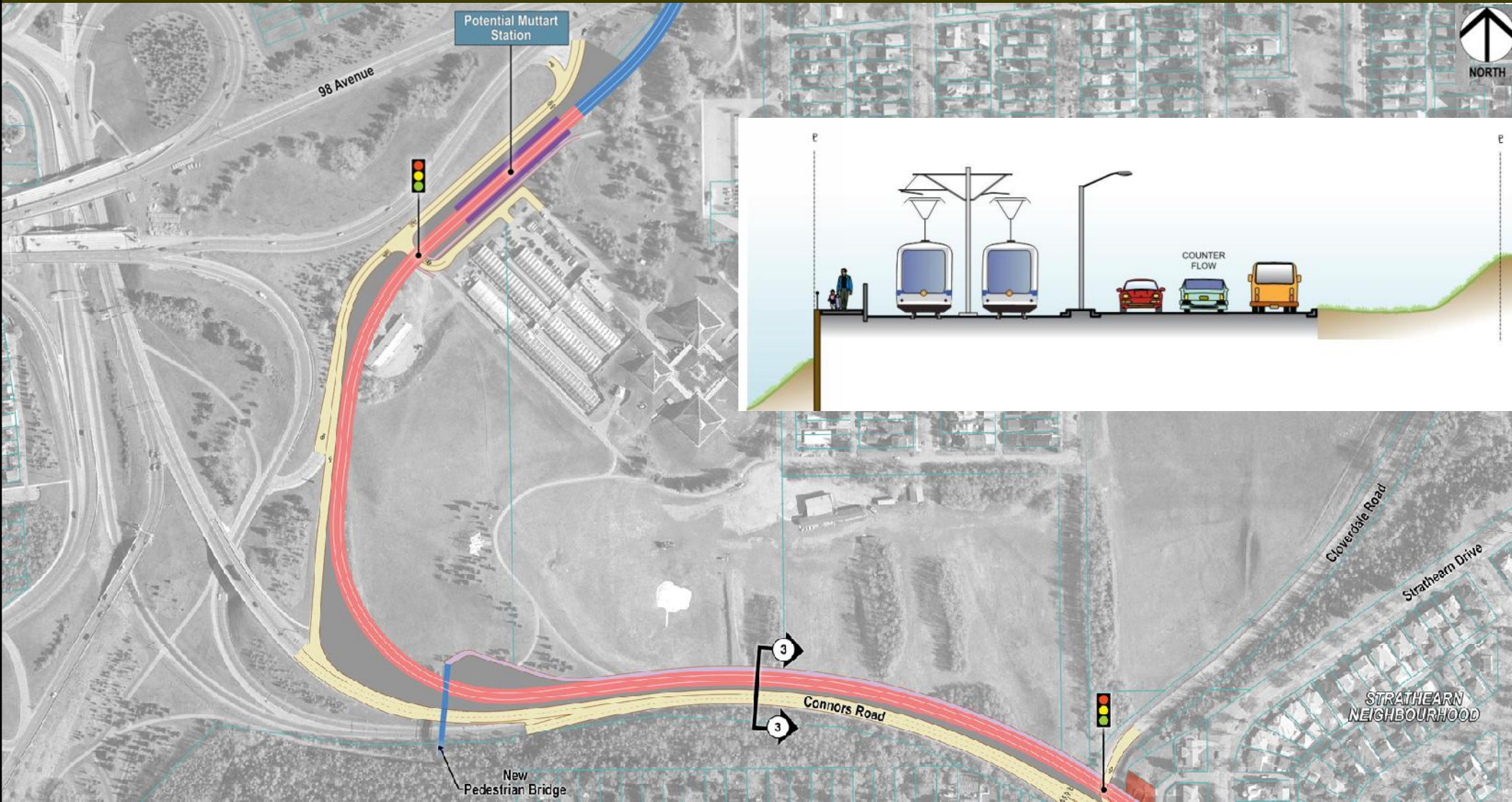
subject to change



Alignment / Stations – Cloverdale

www.edmonton.ca/LRTProjects

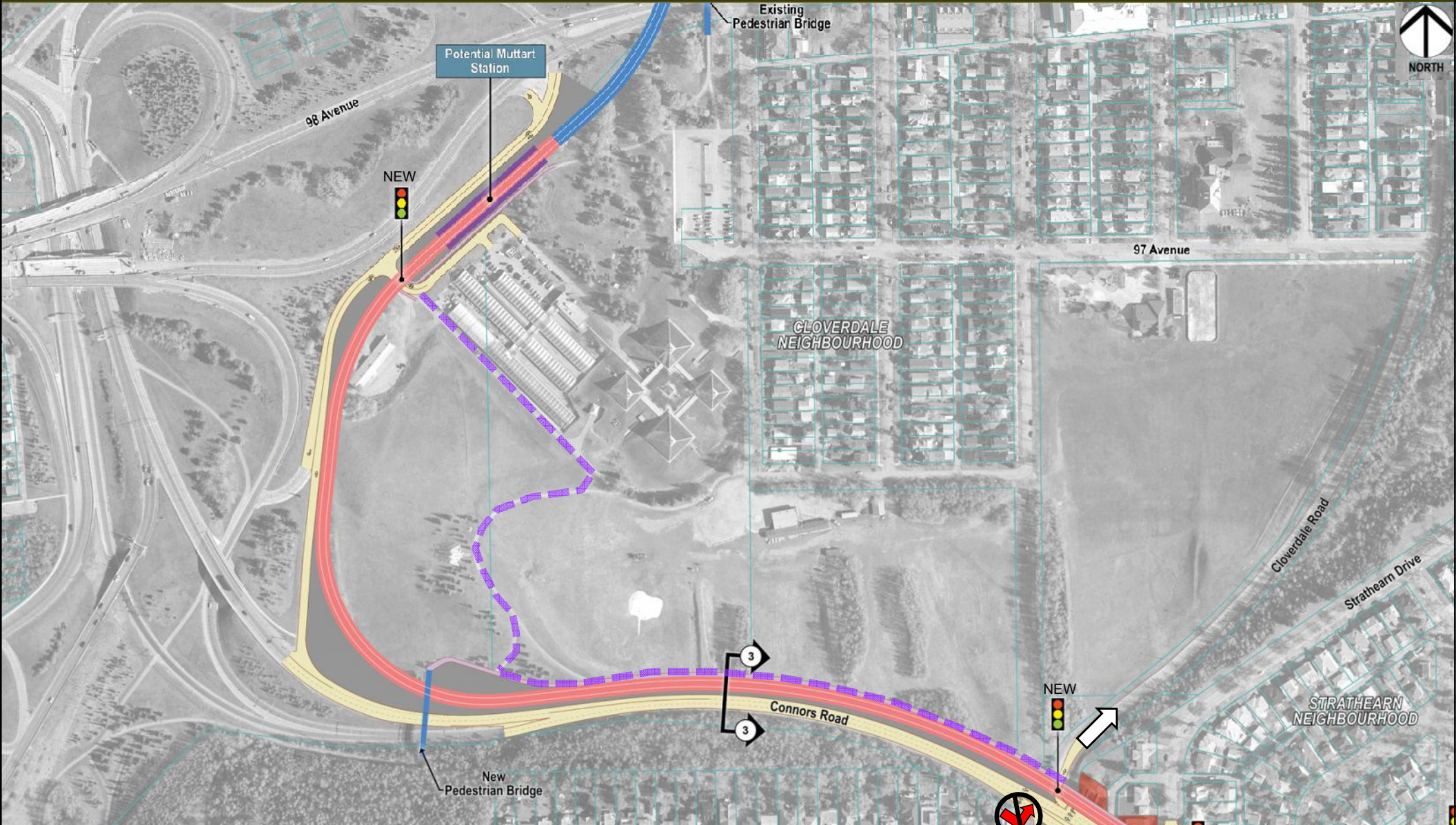
subject to change



North Running LRT

Access – Cloverdale

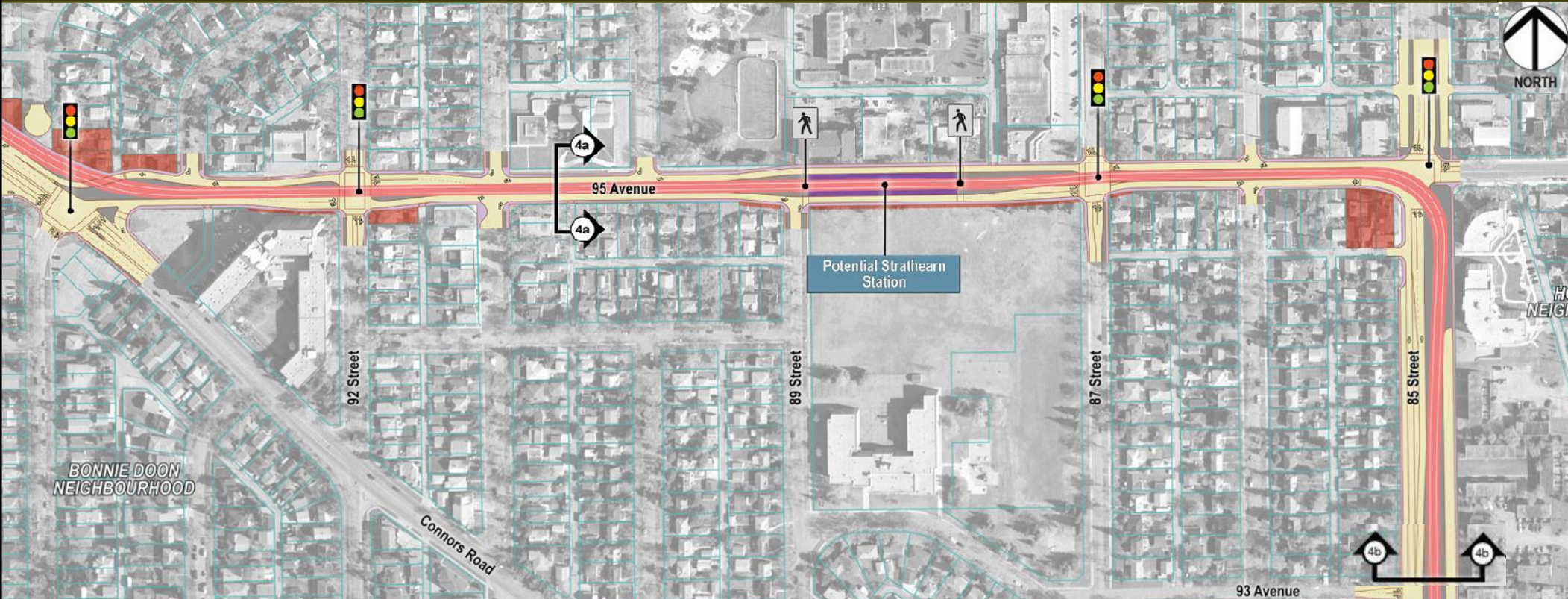
www.edmonton.ca/LRTProjects



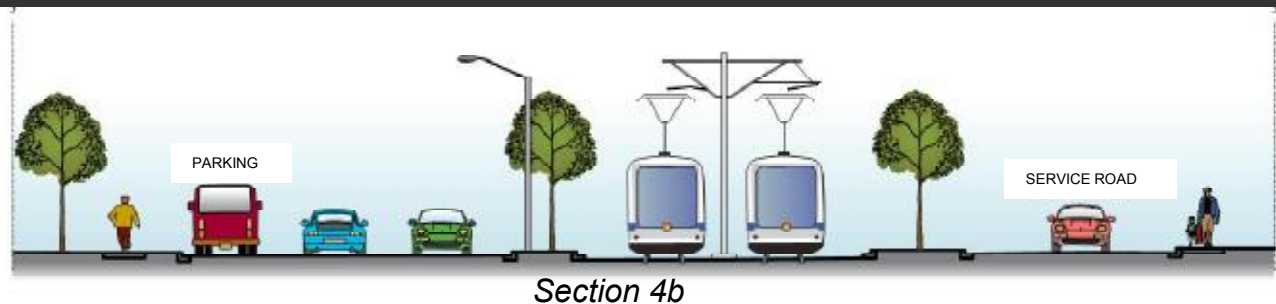
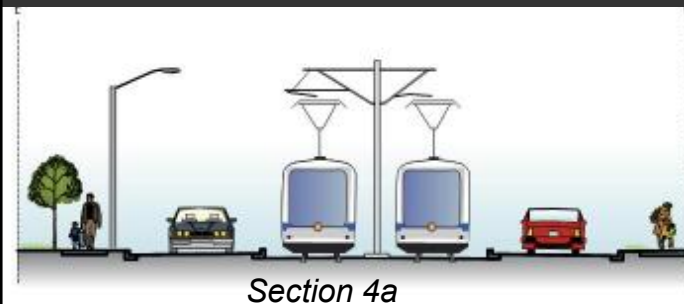
Alignment / Stations – Strathearn

www.edmonton.ca/LRTProjects

subject to change



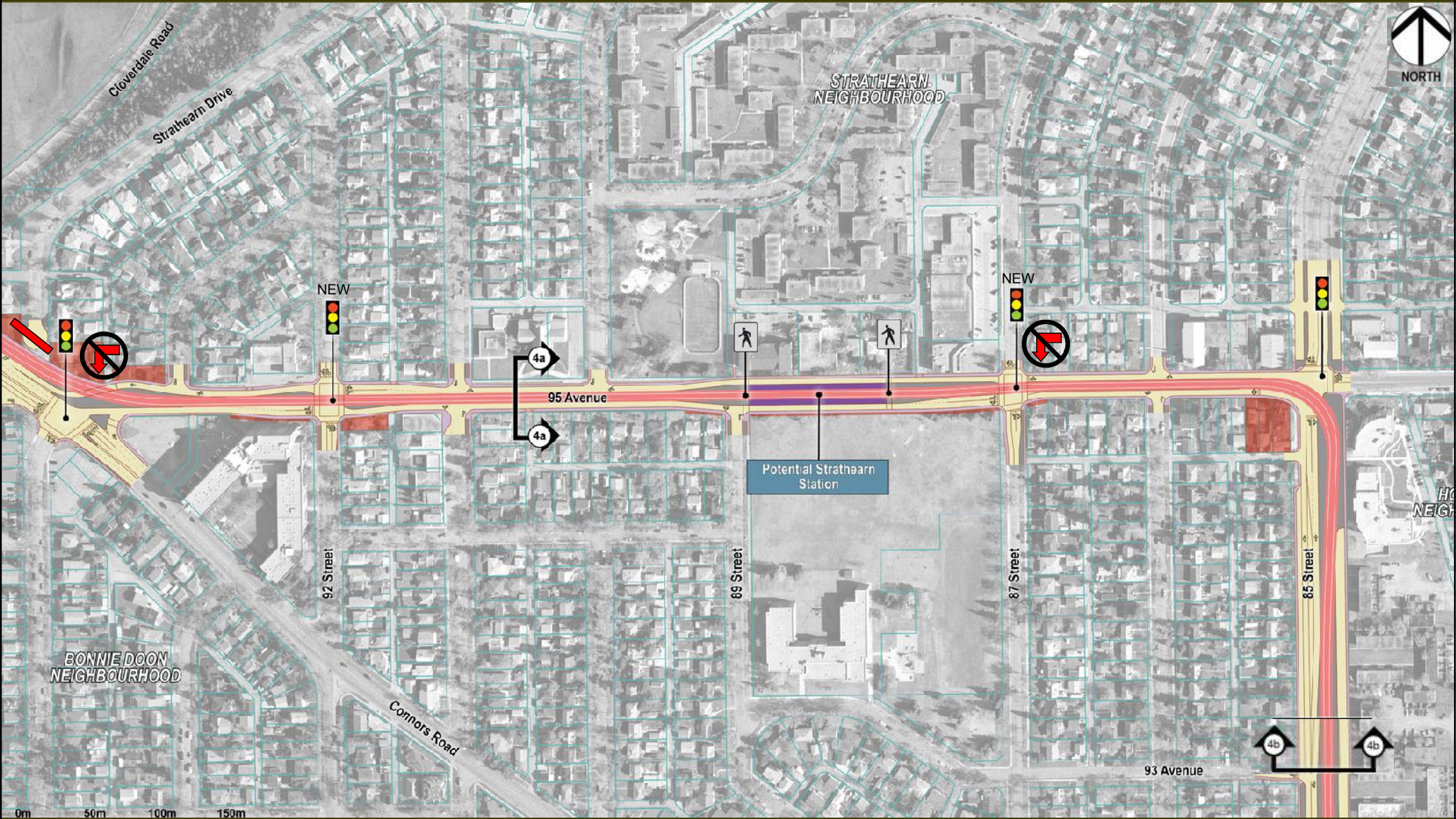
Centre Running LRT



Access – Strathearn

www.edmonton.ca/LRTProjects

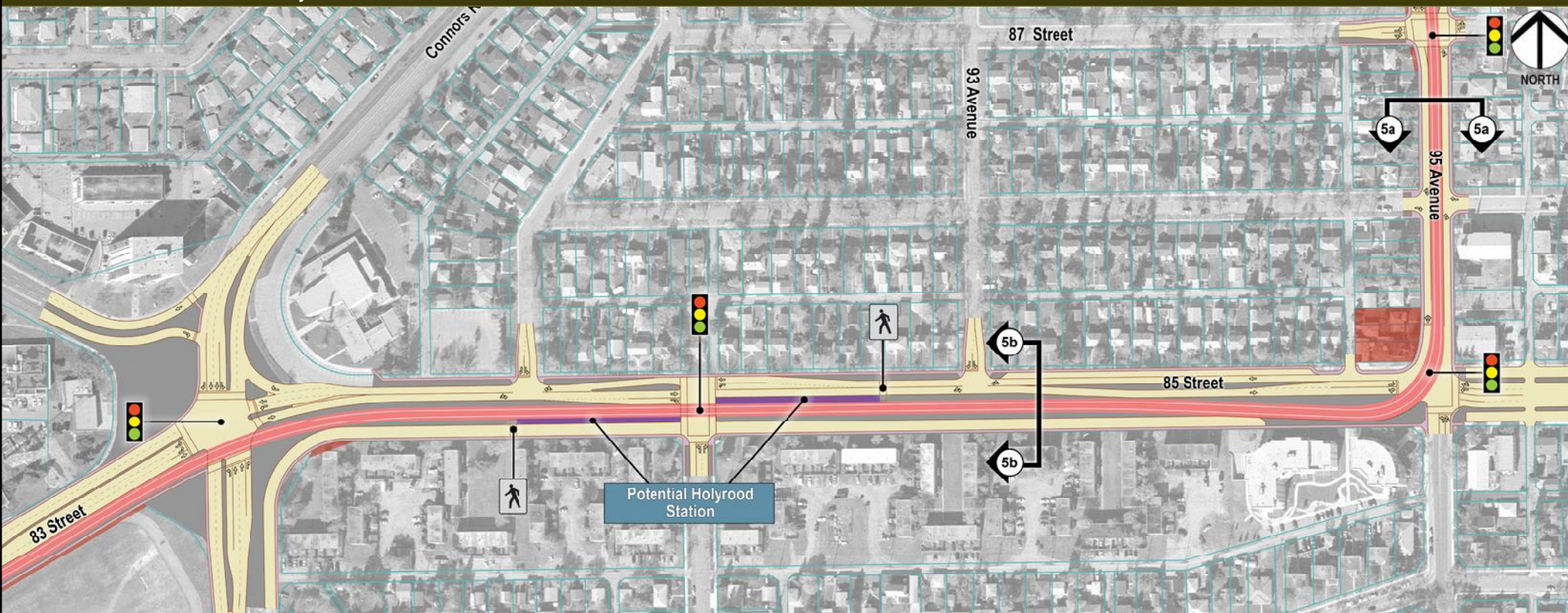
subject to change



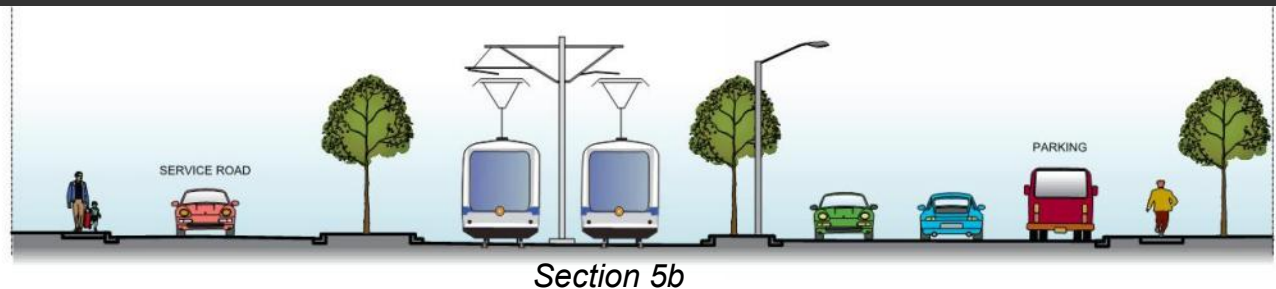
Alignment / Stations – Holyrood

www.edmonton.ca/LRTProjects

subject to change



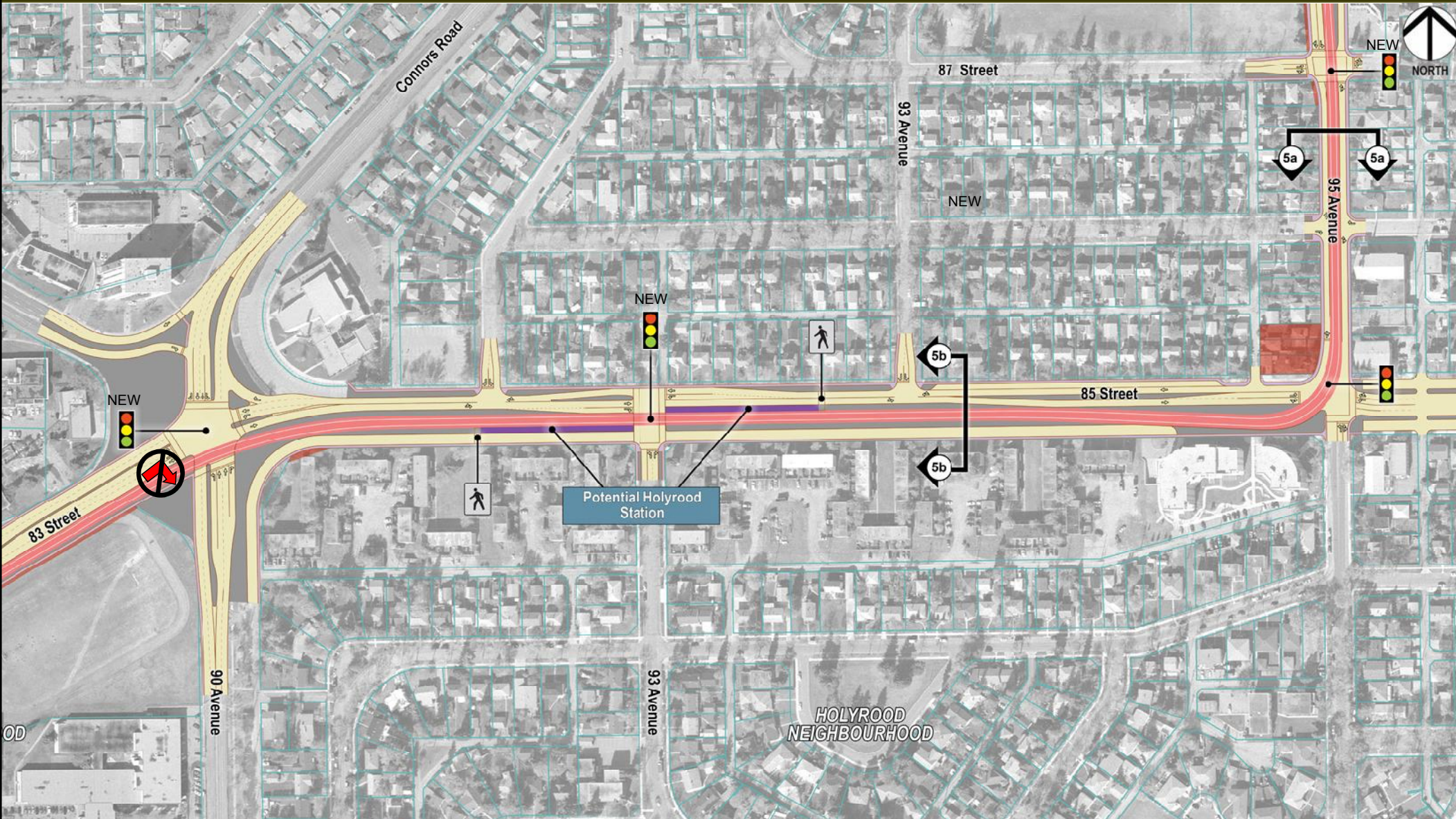
East Running LRT



Access – Holyrood

www.edmonton.ca/LRTProjects

subject to change



Access – Bonnie Doon Traffic Circle

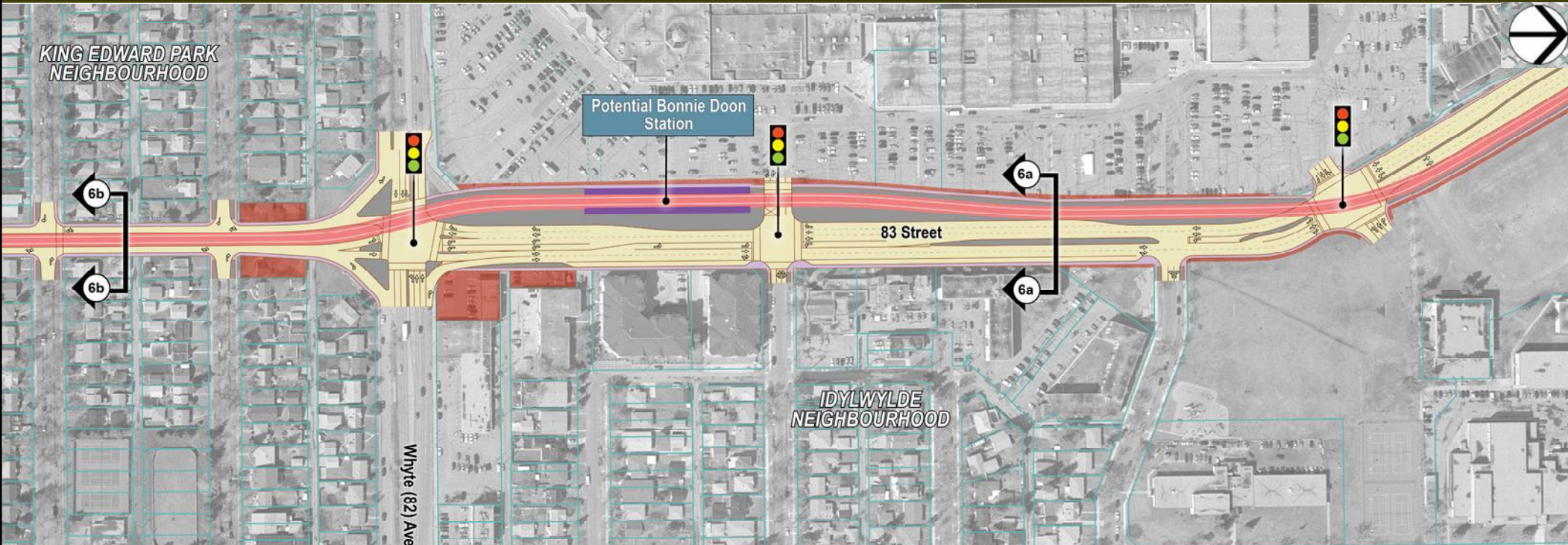
www.edmonton.ca/LRTPProjects



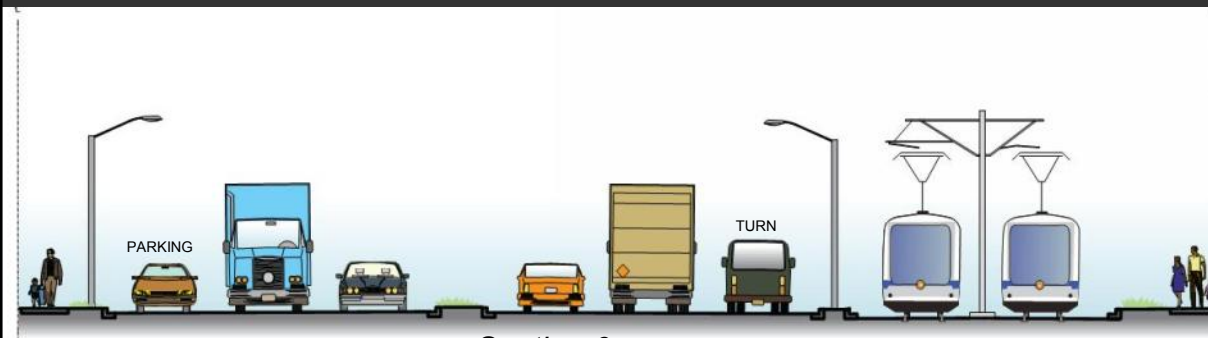
Alignment / Stations – Bonnie Doon

www.edmonton.ca/LRTProjects

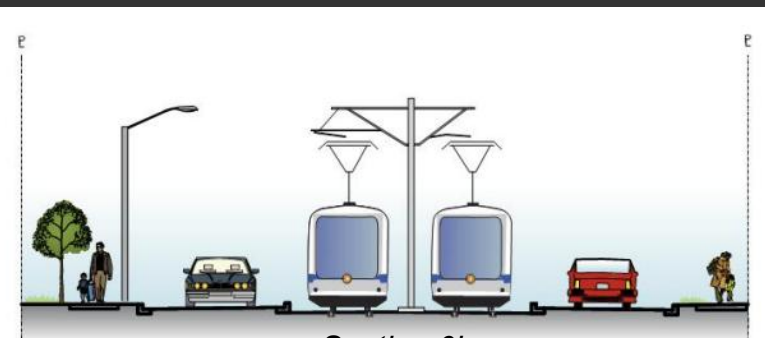
subject to change



West Running LRT



Section 6a

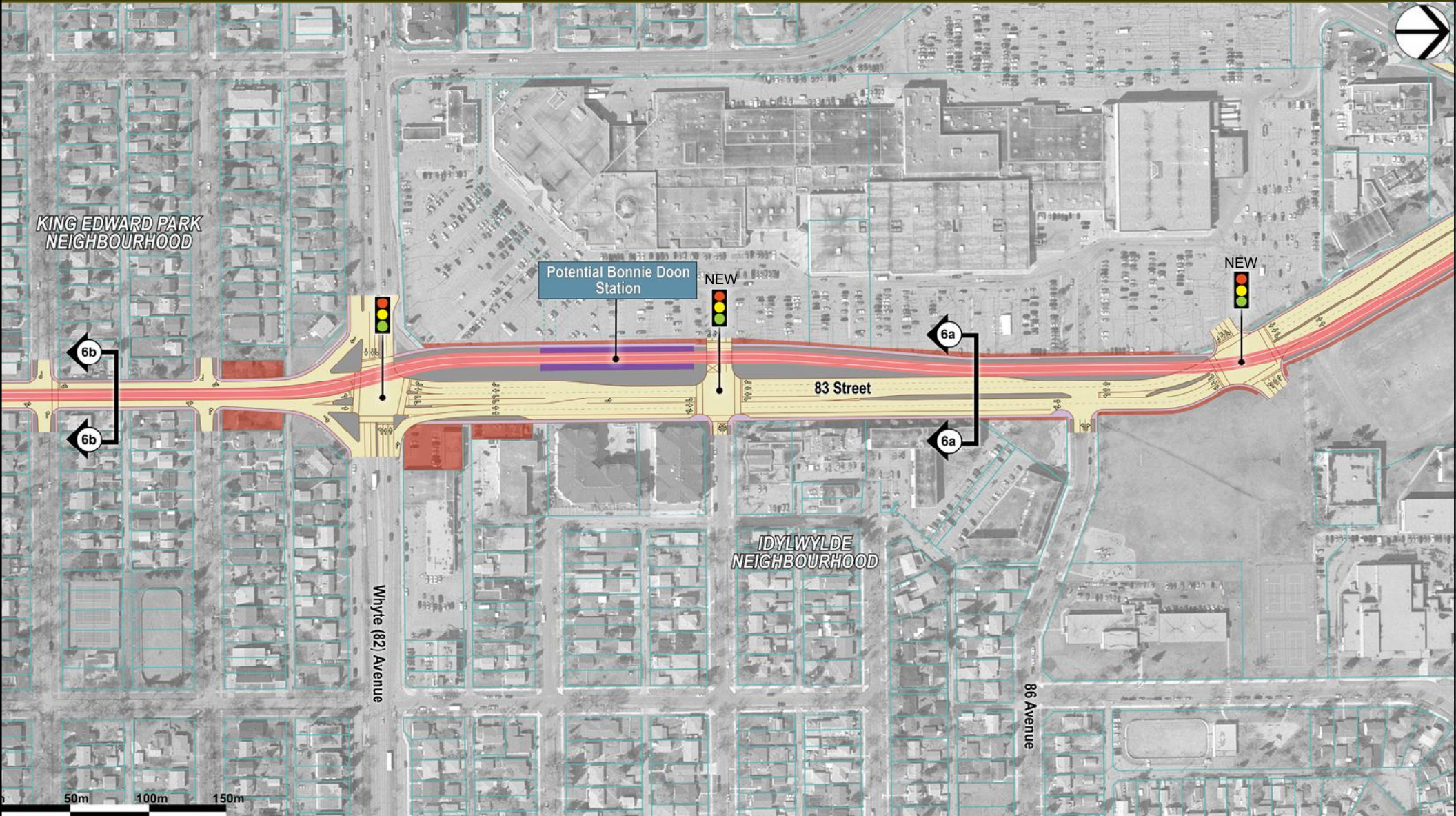


Section 6b

Access – Bonnie Doon

www.edmonton.ca/LRTProjects

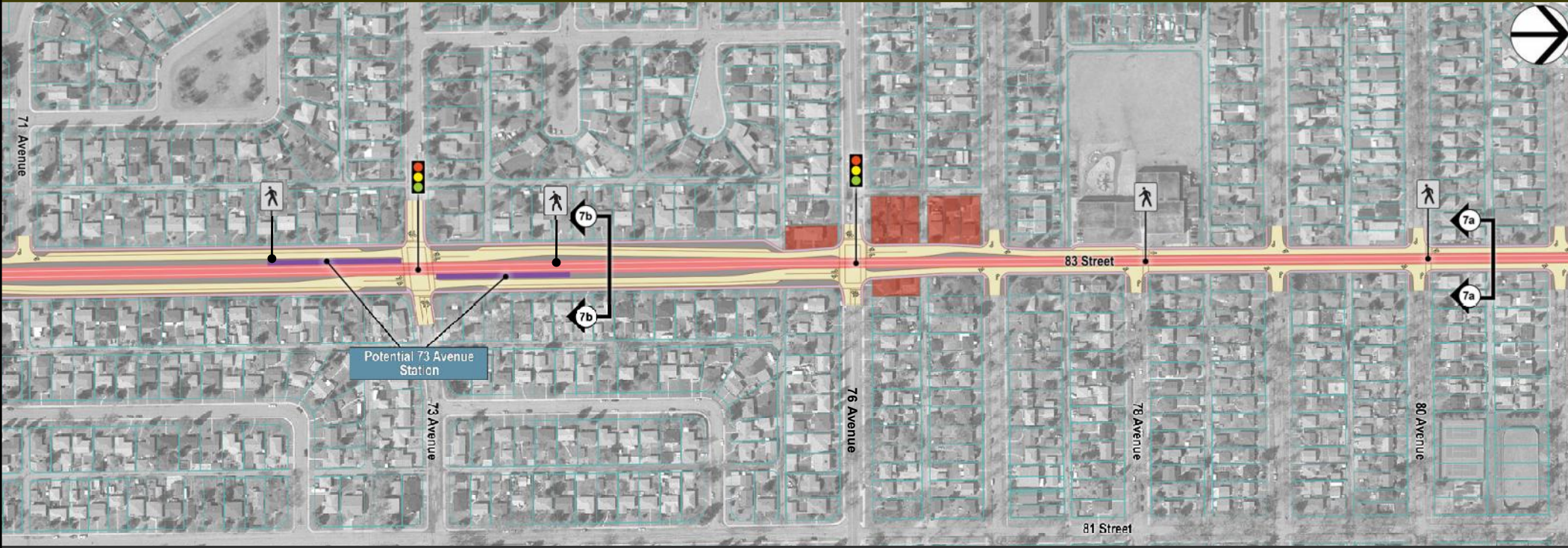
subject to change



Alignment / Stations – Avonmore / King Edward Park

www.edmonton.ca/LRTProjects

subject to change



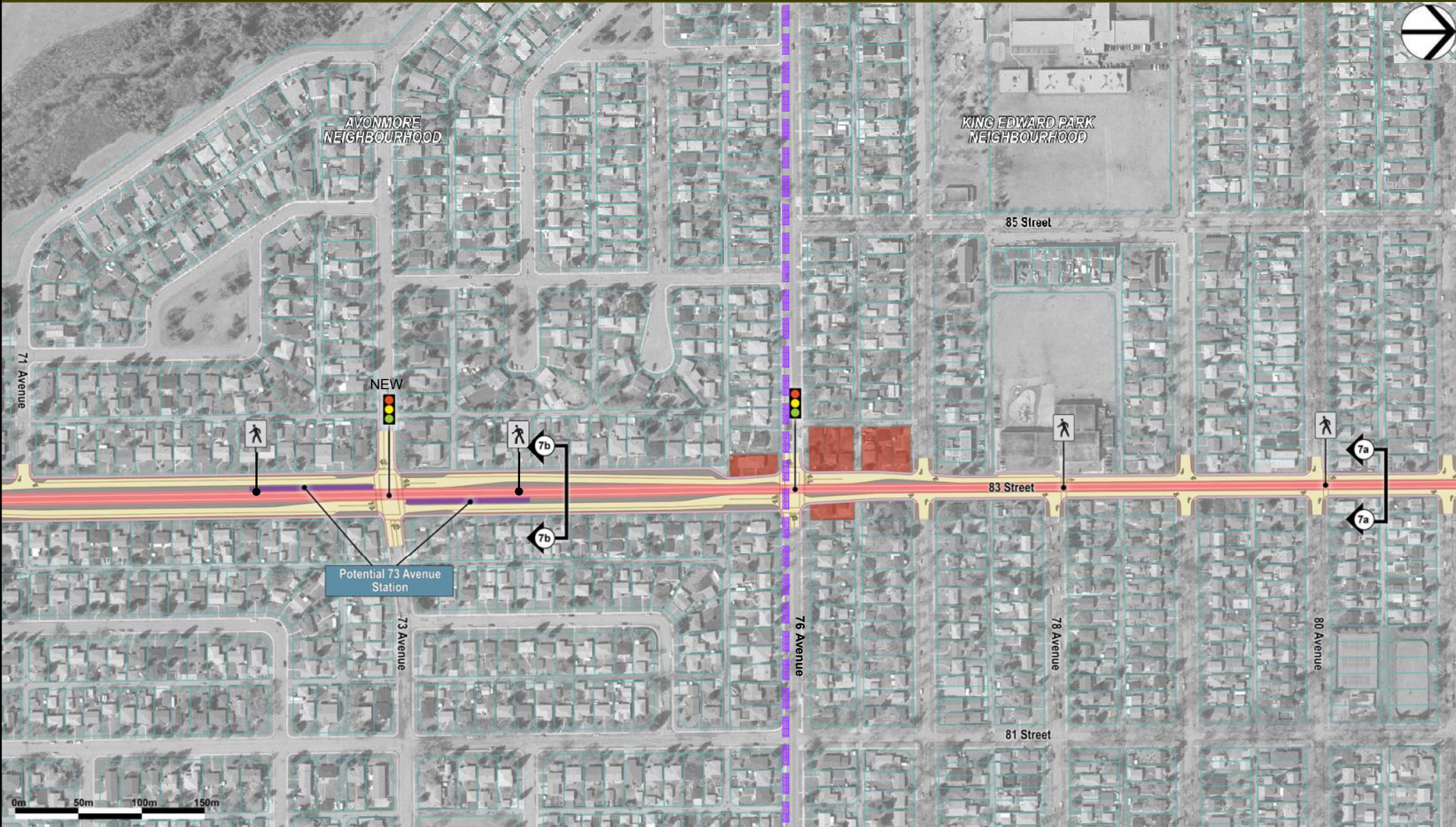
Centre Running LRT



Access – Avonmore / King Edward Park

www.edmonton.ca/LRTProjects

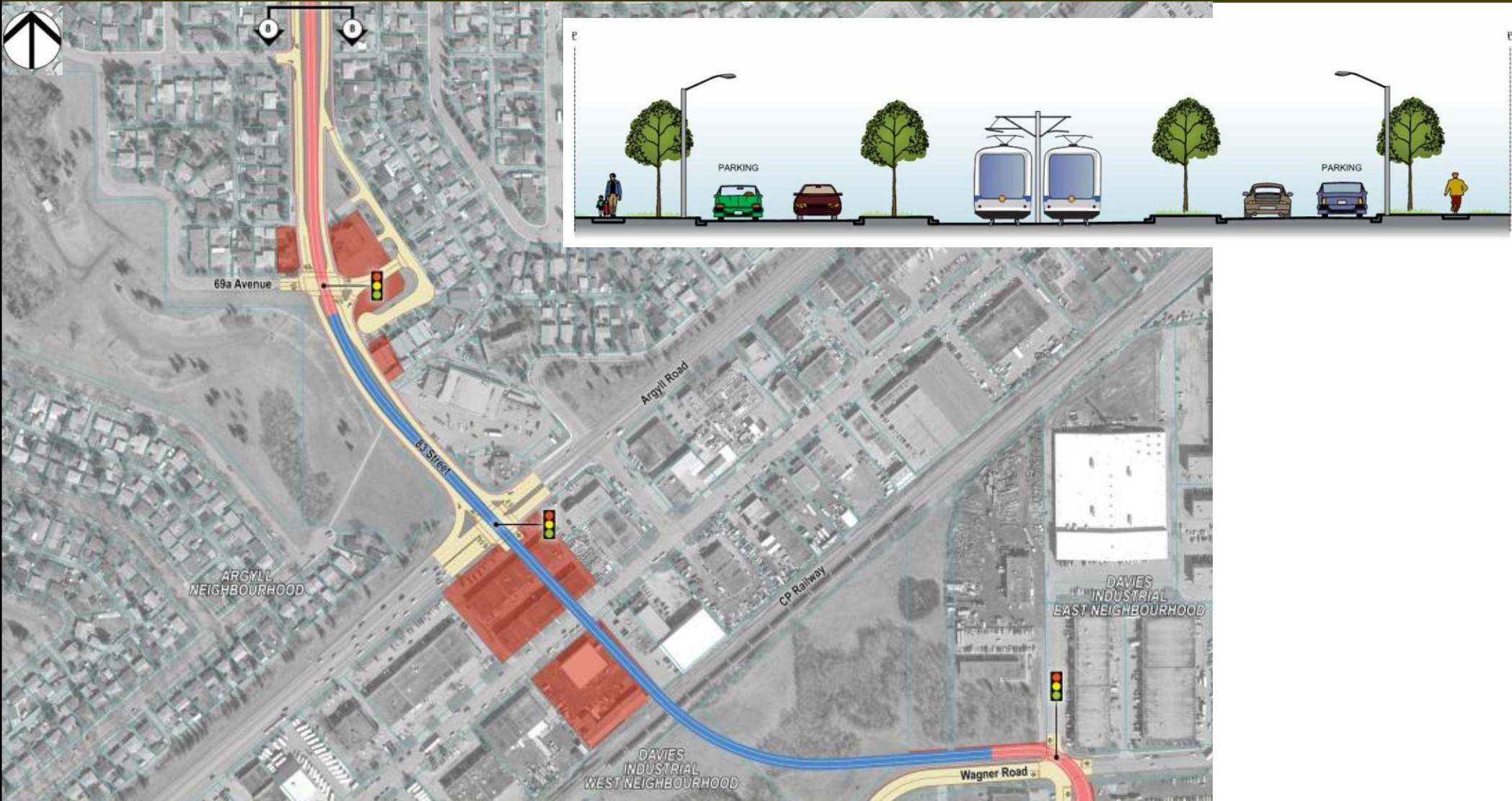
subject to change



Alignment / Stations – Argyll

www.edmonton.ca/LRTProjects

subject to change



Centre Running LRT

Elevated LRT

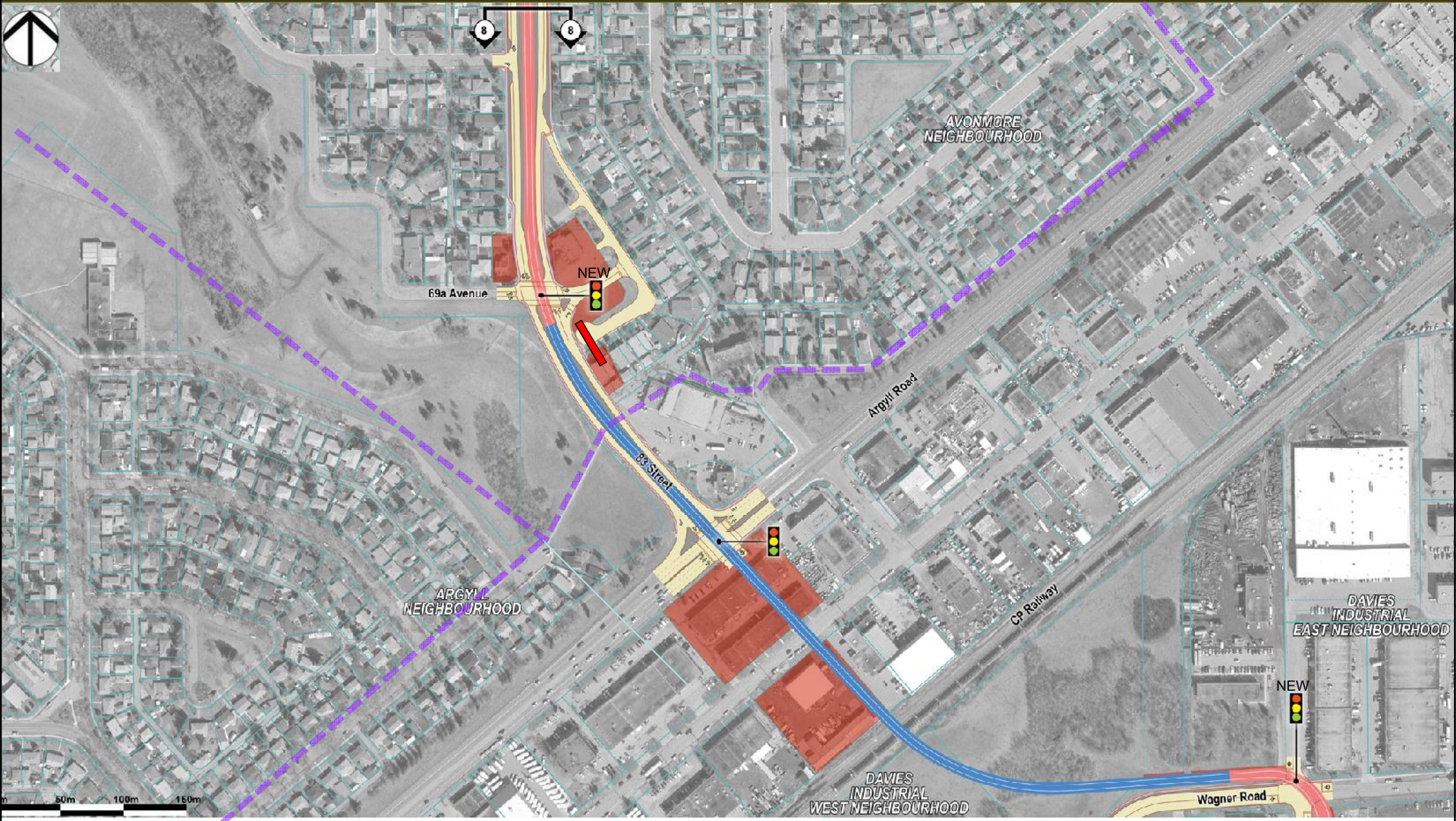
www.edmonton.ca/LRTProjects



Access – Argyll

www.edmonton.ca/LRTProjects

subject to change





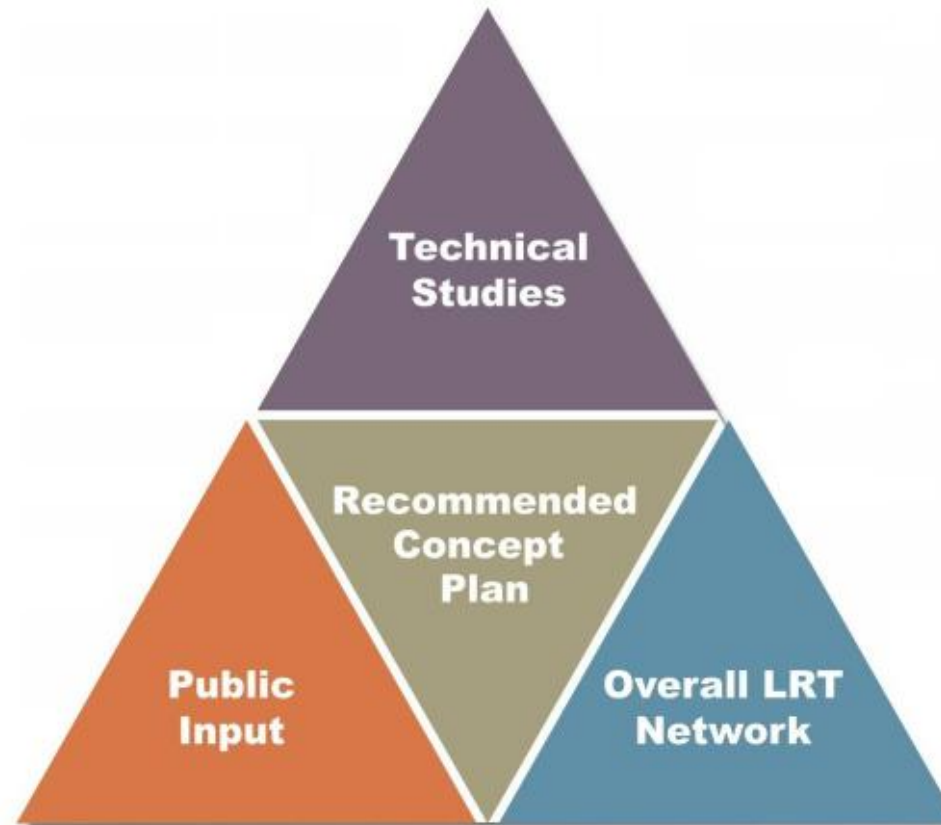
Southeast LRT Open House
Downtown to Argyll

www.edmonton.ca/LRTProjects

Next Steps

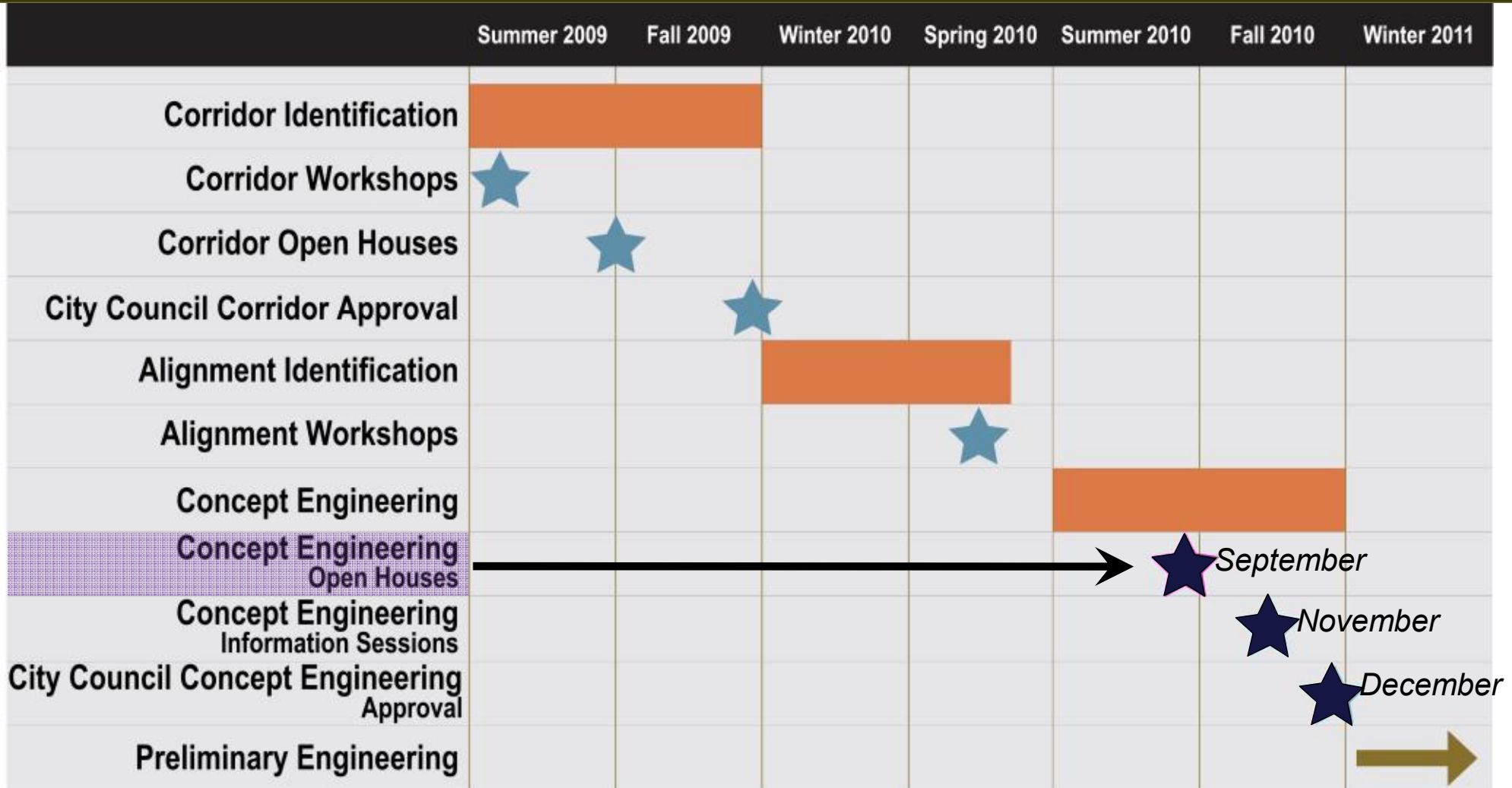
Overall Process

www.edmonton.ca/LRTProjects



Next Steps

www.edmonton.ca/LRTProjects



Other Items

www.edmonton.ca/LRTProjects

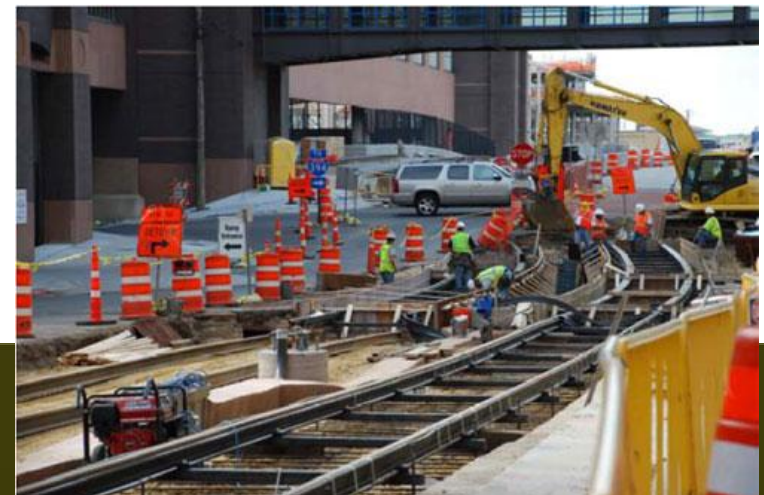
- Available parking programs
 - Commercial
(Bylaw 5590 signs, Private Parking Agency Enforcement)
 - Residential
(Residential Parking Programs, localized parking restrictions)
 - Additional engineering and study is required
- Noise study (on going)
- Safety/Security (preliminary engineering)
- Traffic circulation within neighbourhoods (on going)



Ongoing Considerations

www.edmonton.ca/LRTProjects

- Funding
- Traffic accommodation during construction
- Geotechnical / Environmental / Utilities
- Community/business impacts





Southeast LRT Open House
Downtown to Argyll

www.edmonton.ca/LRTProjects

Question and Answer

Question and Answer Session “Ground Rules”

www.edmonton.ca/LRTPProjects

- 2 minutes for each participant to ask a question or make a comment
- One follow-up question (1 minute)
- Will recognize 3 people for each round of questions; persons with microphones will go to those participants to ask their questions
- 3 rounds of questions
- Additional questions from same person not recognized until no new participants are wanting to ask questions
- Questions and responses will be recorded; please use microphones

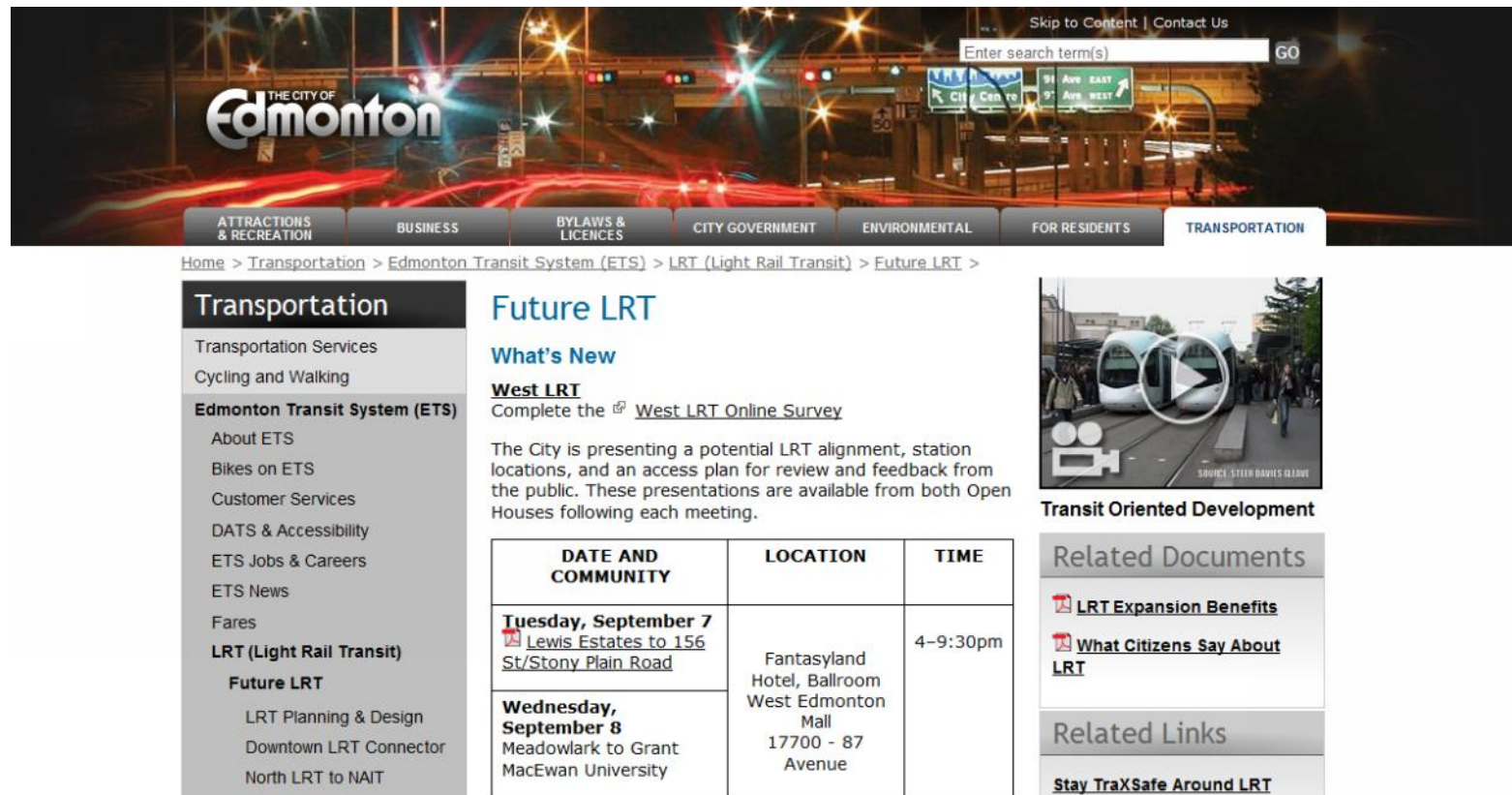


Conclusion

www.edmonton.ca/LRTProjects

- Fill out Questionnaires
- Presentation available on website:

www.edmonton.ca/LRTProjects



The screenshot shows the City of Edmonton website's 'Future LRT' page. The navigation menu includes: ATTRactions & RECREATION, BUSINESS, BYLAWS & LICENCES, CITY GOVERNMENT, ENVIRONMENTAL, FOR RESIDENTS, and TRANSPORTATION. The breadcrumb trail is: Home > Transportation > Edmonton Transit System (ETS) > LRT (Light Rail Transit) > Future LRT >. The page title is 'Future LRT' and the sub-header is 'What's New'. A link to 'West LRT Online Survey' is provided. A paragraph states: 'The City is presenting a potential LRT alignment, station locations, and an access plan for review and feedback from the public. These presentations are available from both Open Houses following each meeting.' A table lists the dates, locations, and times for community meetings.

DATE AND COMMUNITY	LOCATION	TIME
Tuesday, September 7 Lewis Estates to 156 St/Stony Plain Road	Fantasyland Hotel, Ballroom West Edmonton Mall 17700 - 87 Avenue	4-9:30pm
Wednesday, September 8 Meadowlark to Grant MacEwan University		

Related Documents:

- LRT Expansion Benefits
- What Citizens Say About LRT

Related Links:

- Stay TraXSafe Around LRT



Southeast LRT Open House
Downtown to Argyll

www.edmonton.ca/LRTProjects

Thank you!