



# Southeast LRT Open House

[www.edmonton.ca/LRTProjects](http://www.edmonton.ca/LRTProjects)

## Welcome

### Argyll to Mill Woods

September 15, 2010

CH2MHILL

THE CITY OF  
Edmonton



# Tonight's Meeting Purpose

[www.edmonton.ca/LRTProjects](http://www.edmonton.ca/LRTProjects)

- To present a *DRAFT* recommended alignment for the LRT within the approved corridor and obtain feedback
- To provide specific details on:
  - *recommended alignment*
  - *station location and configurations*
  - *neighborhood and pedestrian access*

CH2MHILL

THE CITY OF  
Edmonton

# Proposed Agenda

[www.edmonton.ca/LRTProjects](http://www.edmonton.ca/LRTProjects)

- Welcome and Introductions
- Project Background
- Overall Southeast LRT Alignment
- Segment walkthrough of alignment, station, access and pedestrian recommendations
- Question and Answer

CH2MHILL

THE CITY OF  
Edmonton

# LRT Open House Schedule

[www.edmonton.ca/LRTProjects](http://www.edmonton.ca/LRTProjects)

West LRT	
September 7, 2010	Lewis Estates to Stony Plain Road/ 156 Street
September 8, 2010	Meadowlark to Downtown

Southeast LRT	
September 14, 2010	Downtown to Argyll Road
September 15, 2010	Argyll Road to Mill Woods Town Centre

[www.edmonton.ca/LRTProjects](http://www.edmonton.ca/LRTProjects)

CH2MHILL

THE CITY OF  
Edmonton



**Southeast LRT Open House**  
*Argyll to Mill Woods*

[www.edmonton.ca/LRTProjects](http://www.edmonton.ca/LRTProjects)

# Project Background


**CH2MHILL** 




**Council Approvals to Date**

[www.edmonton.ca/LRTProjects](http://www.edmonton.ca/LRTProjects)

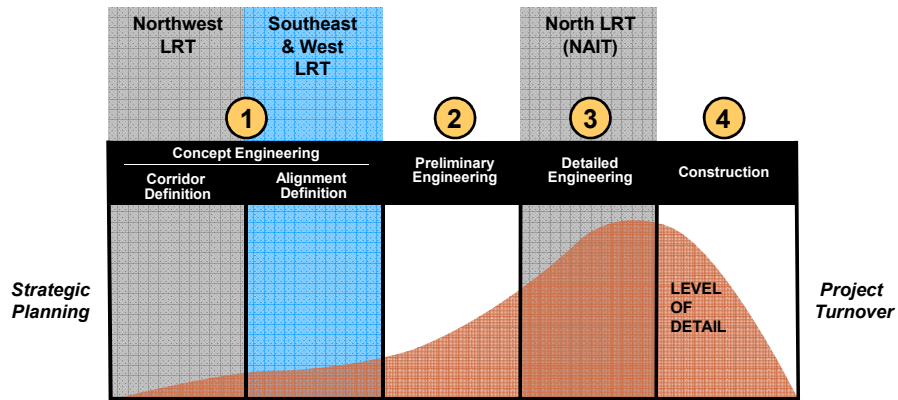
- LRT Network Plan (*June 2009*)
- Southeast and West LRT Corridor  
(*December 2009*)
- Downtown Corridor  
(*June 2010*)



**CH2MHILL** 

# LRT Development

[www.edmonton.ca/LRTProjects](http://www.edmonton.ca/LRTProjects)



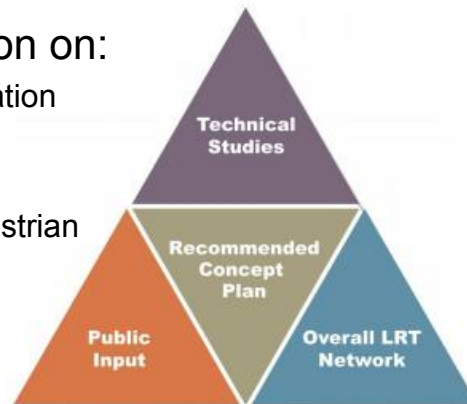
CH2MHILL

THE CITY OF  
Edmonton

## Where we are in the process today

[www.edmonton.ca/LRTProjects](http://www.edmonton.ca/LRTProjects)

- Presenting information on:
  - Alignment Recommendation
  - Station Location and Configuration
  - Neighborhood and Pedestrian Access
  - Parking Programs

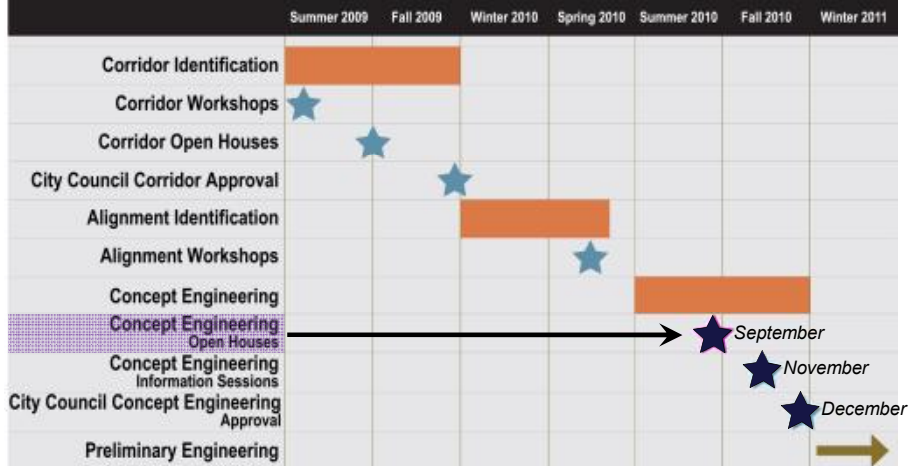


CH2MHILL

THE CITY OF  
Edmonton

# Where We Are Going

www.edmonton.ca/LRTPProjects



CH2MHILL

Edmonton

# LRT Network

www.edmonton.ca/LRTPProjects



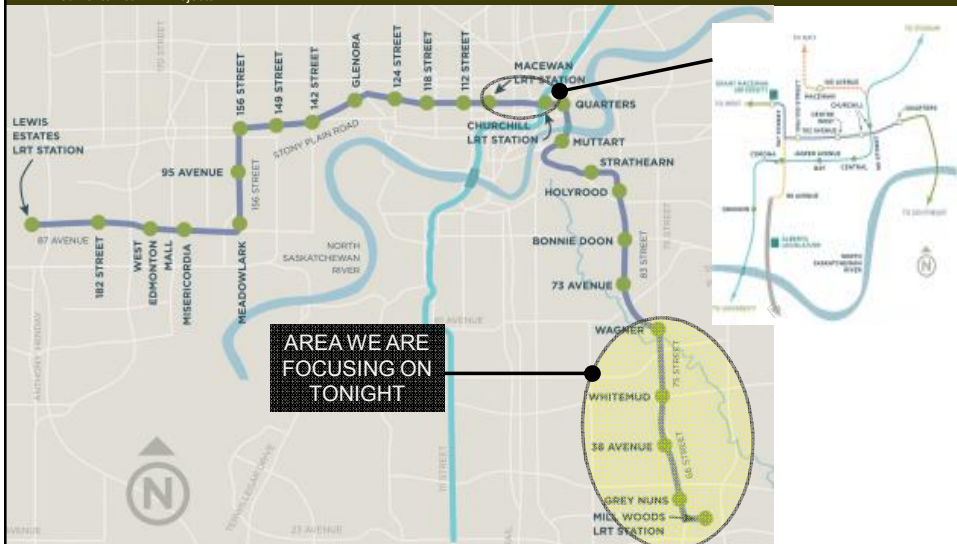
# Urban Style LRT

[www.edmonton.ca/LRTPProjects](http://www.edmonton.ca/LRTPProjects)



# Southeast and West LRT Corridors

[www.edmonton.ca/LRTPProjects](http://www.edmonton.ca/LRTPProjects)






# Southeast LRT Open House

## Argyll to Mill Woods

[www.edmonton.ca/LRTProjects](http://www.edmonton.ca/LRTProjects)

# Public Involvement Process & Update





# Public Involvement Process

[www.edmonton.ca/LRTProjects](http://www.edmonton.ca/LRTProjects)

## May/June 2010

- Process built on LRT corridor public involvement process
- 4 location specific workshops to get input on alignment options, station locations, and access management
- Additional meetings held with:
  - community leagues
  - major institutions
  - property owners
  - business owners



**Southeast and West LRT Open Houses**


West LRT – September 7-8 | Southeast LRT – September 14-15


Concept
Design
Build
Operate

In May 2010, Edmontonians came together at a series of public workshops to learn about West and Southeast LRT options. They shared their thoughts, ideas, and concerns on possible corridors for track locations, LRT stations and vehicle, pedestrian and cyclist access.

**We're moving forward.**  
Considering public input and further technical review, the City is ready to present a potential LRT alignment, station locations, and an access plan for review and feedback.

**Get involved.**  
Attend one of our Open Houses to learn more and share your thoughts. Feedback from this round of consultation will be used in our presentation to City Council in November 2010.



# What We Heard

www.edmonton.ca/LRTProjects

## Competing Themes:

ensure easy access into neighborhoods	↔	reducing travel lanes
station location	↔	intersection operations
pedestrian access across the roadways	↔	vehicle travel times
neighborhood access	↔	neighborhood short-cutting

# What We Heard – Next Steps

www.edmonton.ca/LRTProjects



- Minimize construction costs
- Bus system integration - ensure destinations off the LRT corridor are accessible by bus
- Concerned about noise and impact on residential life
- Emergency vehicle access
- Ensure snow removal can be managed
- Minimize potential for crime and risk to personal security

CH2MHILL

Edmonton



# Responding to Feedback

[www.edmonton.ca/LRTProjects](http://www.edmonton.ca/LRTProjects)

- When reviewing impacts for alignment, used philosophy to balance impact/benefit to communities on both sides of LRT corridor.
- Added signalized pedestrian crossings and intersections at key locations
- Recognizing multi-use trail and cyclist connections



CH2MHILL

THE CITY OF  
**Edmonton**

# Southeast LRT Open House

*Argyll to Mill Woods*

[www.edmonton.ca/LRTProjects](http://www.edmonton.ca/LRTProjects)

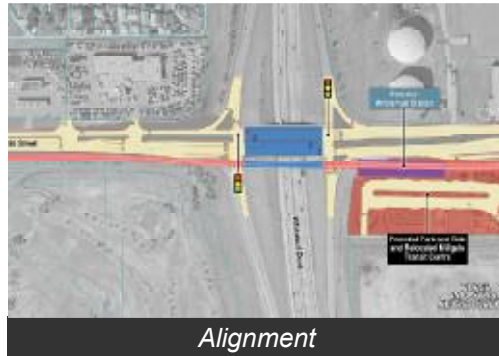
## Recommended Alignment

CH2MHILL

THE CITY OF  
**Edmonton**

# Alignment versus Corridor

www.edmonton.ca/LRTPProjects



Alignment



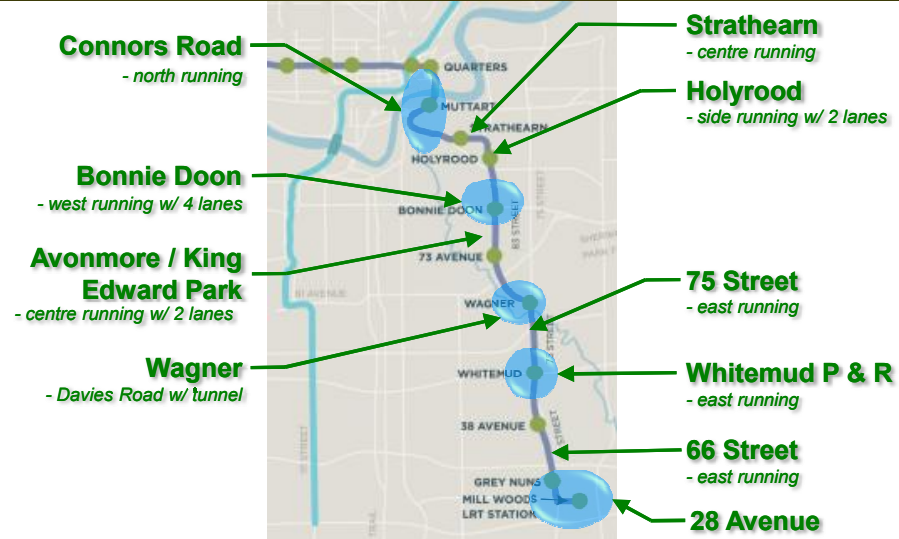
Corridor

CH2MHILL

THE CITY OF Edmonton

# Recommended Alignment Overview

www.edmonton.ca/LRTPProjects



## Right-of-Way

[www.edmonton.ca/LRTPProjects](http://www.edmonton.ca/LRTPProjects)

- There are impacts
- Constrained Right-of-Way
- Minimize property requirements by removing:
  - service roads
  - traffic lanes
  - on-street parking



CH2MHILL

THE CITY OF  
**Edmonton**

## Simple Stop Design

[www.edmonton.ca/LRTPProjects](http://www.edmonton.ca/LRTPProjects)

- Low floor vehicles and platforms provide:
- Simple infrastructure
  - Best fits into surrounding areas
  - Improved neighbourhood connections



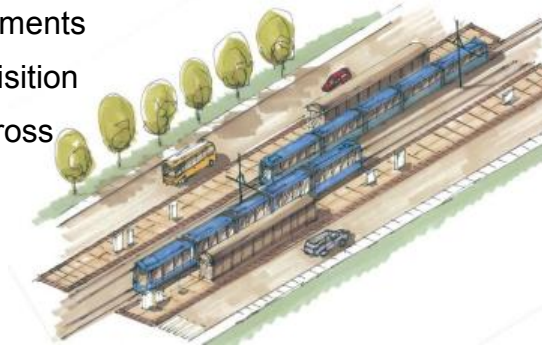
THE CITY OF  
**Edmonton**

# Station Configurations

[www.edmonton.ca/LRTProjects](http://www.edmonton.ca/LRTProjects)

Stations located to:

- Balance access requirements
- Minimize property acquisition
- Provide consistency across the system
- Serve activity centres



CH2MHILL

THE CITY OF  
Edmonton

# Neighbourhood and Business Access

[www.edmonton.ca/LRTProjects](http://www.edmonton.ca/LRTProjects)

Basic Principles:

- Turns across LRT tracks will be at signalized intersections
- Traffic signals will be located on major roads to balance access needs and train movement
- Access will be maintained using the supporting street and circulation system



CH2MHILL

# Pedestrian Access

www.edmonton.ca/LRTProjects



Portland Ground - Pictures of Portland Oregon



Google Earth

- Pedestrian movements provided at certain locations to maintain existing connectivity where feasible
- Pedestrian only crossings could have various methods of warning and control



Google Earth



CH2MHILL

THE CITY OF  
**Edmonton**

# Southeast LRT Open House

## Argyll to Mill Woods

www.edmonton.ca/LRTProjects

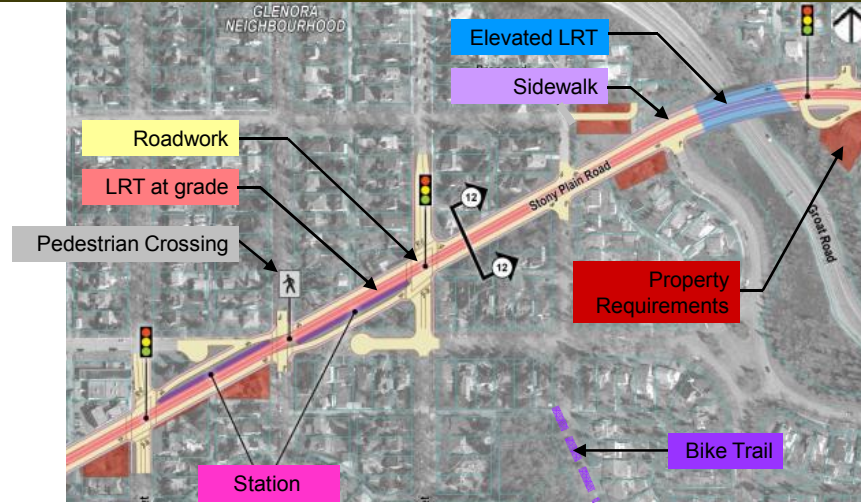
# Segment Walkthrough

CH2MHILL

THE CITY OF  
**Edmonton**

# Legend / Key

www.edmonton.ca/LRTProjects



LRT Below Grade (not shown)

# Alignment / Stations – Argyll

www.edmonton.ca/LRTProjects

subject to change



Centre Running LRT

# Elevated LRT

[www.edmonton.ca/LRTProjects](http://www.edmonton.ca/LRTProjects)



THE CITY OF  
**Edmonton**

# Access – Argyll

[www.edmonton.ca/LRTProjects](http://www.edmonton.ca/LRTProjects)

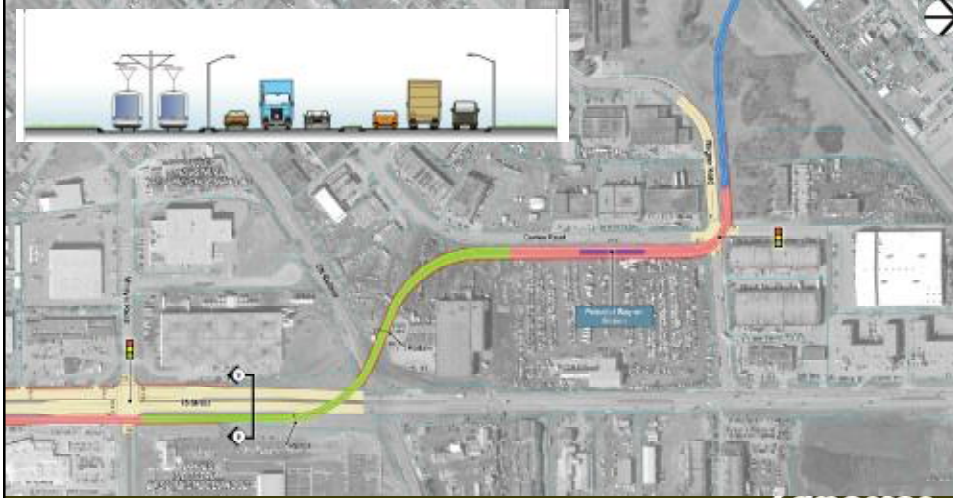
*subject to change*



# Alignment / Stations – Wagner

[www.edmonton.ca/LRTProjects](http://www.edmonton.ca/LRTProjects)

subject to change



LRT Below Grade

# Access – Wagner

[www.edmonton.ca/LRTProjects](http://www.edmonton.ca/LRTProjects)

subject to change





# Alignment / Stations – 75 Street

[www.edmonton.ca/LRTProjects](http://www.edmonton.ca/LRTProjects)

subject to change



East Running LRT



# Access – 75 Street

[www.edmonton.ca/LRTProjects](http://www.edmonton.ca/LRTProjects)

subject to change



# Alignment / Stations – Whitemud

[www.edmonton.ca/LRTProjects](http://www.edmonton.ca/LRTProjects)

subject to change



East Running LRT



# Access – Whitemud

[www.edmonton.ca/LRTProjects](http://www.edmonton.ca/LRTProjects)

subject to change



# Alignment / Stations – 66 Street

[www.edmonton.ca/LRTProjects](http://www.edmonton.ca/LRTProjects)

subject to change



East Running LRT



# Access – 66 Street

[www.edmonton.ca/LRTProjects](http://www.edmonton.ca/LRTProjects)

subject to change



# Alignment / Stations – Grey Nuns

[www.edmonton.ca/LRTProjects](http://www.edmonton.ca/LRTProjects)

subject to change



East Running LRT



# Access – Grey Nuns

[www.edmonton.ca/LRTProjects](http://www.edmonton.ca/LRTProjects)

subject to change



# Alignment / Stations – Mill Woods

www.edmonton.ca/LRTProjects

subject to change

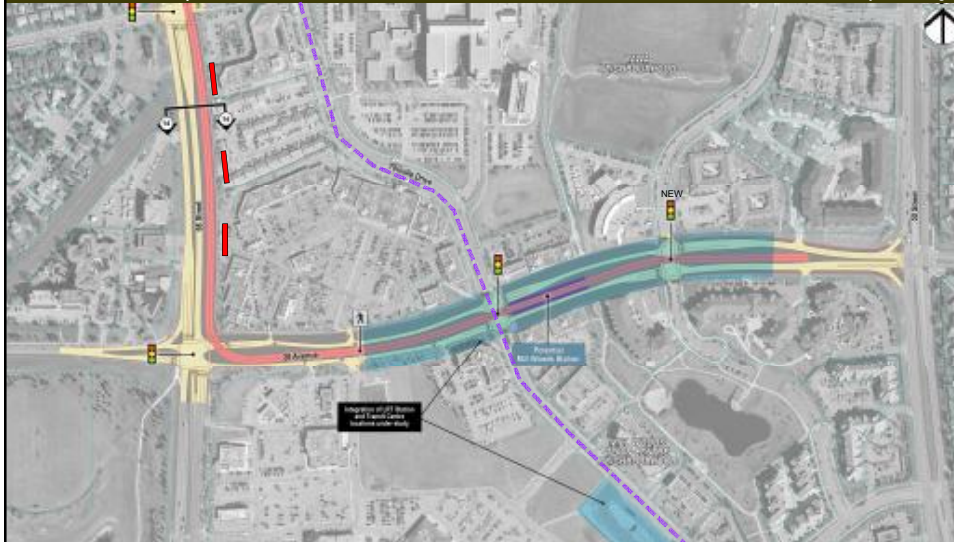



East Running LRT

# Access – Mill Woods

www.edmonton.ca/LRTProjects

subject to change







**Southeast LRT Open House**  
*Argyll to Mill Woods*

[www.edmonton.ca/LRTProjects](http://www.edmonton.ca/LRTProjects)

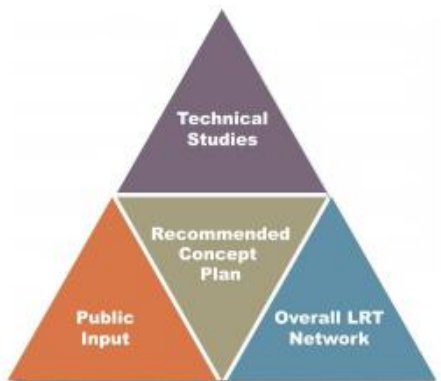
# Next Steps


**CH2MHILL** 



**Overall Process**

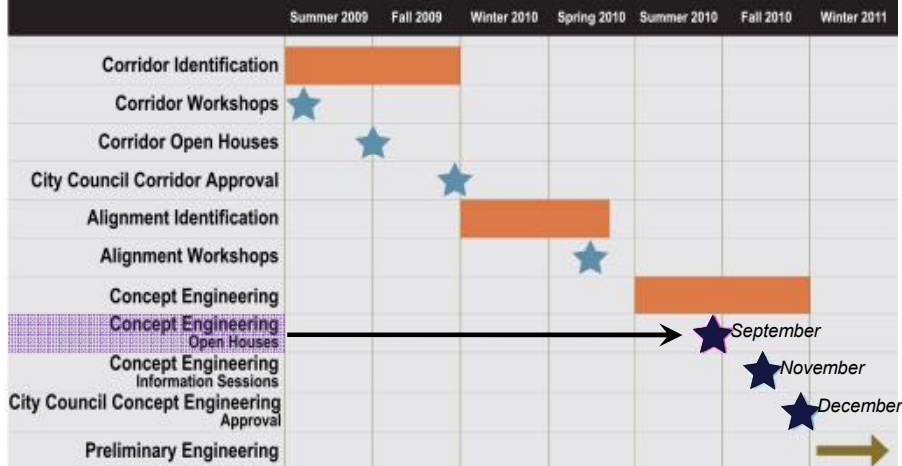
[www.edmonton.ca/LRTProjects](http://www.edmonton.ca/LRTProjects)



**CH2MHILL** 

# Next Steps

www.edmonton.ca/LRTProjects



CH2MHILL

Edmonton

# Other Items

www.edmonton.ca/LRTProjects



- Available parking programs
  - Commercial  
*(Bylaw 5590 signs, Private Parking Agency Enforcement)*
  - Residential  
*(Residential Parking Programs, localized parking restrictions)*
  - Additional engineering and study is required
- Noise study (on going)
- Safety/Security (preliminary engineering)
- Traffic circulation within neighborhoods (on going)

CH2MHILL

Edmonton

# Ongoing Considerations

[www.edmonton.ca/LRTProjects](http://www.edmonton.ca/LRTProjects)



- Funding
- Traffic accommodation during construction
- Geotechnical / Environmental / Utilities
- Community/business impacts



**CH2MHILL**

# Southeast LRT Open House

*Argyll to Mill Woods*

[www.edmonton.ca/LRTProjects](http://www.edmonton.ca/LRTProjects)

## Question and Answer

**CH2MHILL**

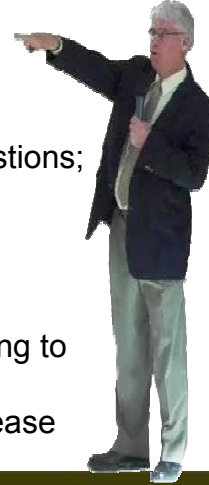
**Edmonton**



## Question and Answer Session “Ground Rules”

[www.edmonton.ca/LRTPProjects](http://www.edmonton.ca/LRTPProjects)

- 2 minutes for each participant to ask a question or make a comment
- One follow-up question (1 minute)
- Will recognize 3 people for each round of questions; persons with microphones will go to those participants to ask their questions
- 3 rounds of questions
- Additional questions from same person not recognized until no new participants are wanting to ask questions
- Questions and responses will be recorded; please use microphones



CH2MHILL

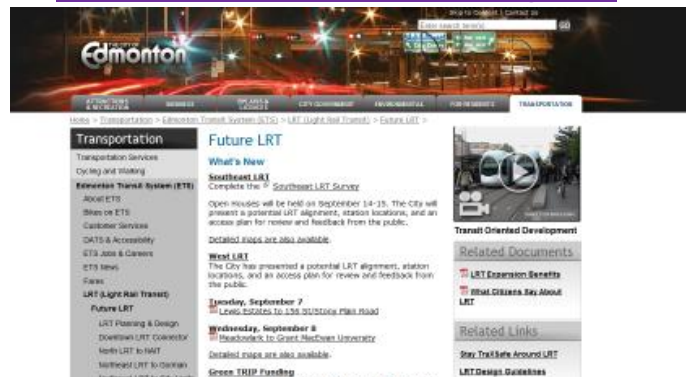
THE CITY OF  
**Edmonton**

## Conclusion


[www.edmonton.ca/LRTPProjects](http://www.edmonton.ca/LRTPProjects)

- Fill out Questionnaires
- Presentation available on website:

[www.edmonton.ca/LRTPProjects](http://www.edmonton.ca/LRTPProjects)



The screenshot shows the City of Edmonton website with a navigation menu on the left and a main content area. The main content area is titled "Future LRT" and includes a "What's New" section with a "Southwest LRT" update. Below this, there are sections for "Next LRT" and "Opening, September 7". The left sidebar contains a "Transportation" menu with various options like "About ETS", "Bikes on ETS", and "Future LRT".



**Southeast LRT Open House**  
*Argyll to Mill Woods*

[www.edmonton.ca/LRTProjects](http://www.edmonton.ca/LRTProjects)

**Thank you!**

**CH2MHILL** 