



West LRT Workshop Session

www.edmonton.ca/LRTProjects

Welcome

Lewis Estates to Meadowlark

May 4, 2010



Tonight's Meeting Purpose

www.edmonton.ca/LRTProjects

- To provide more detailed information on West LRT concept engineering
- To provide specific detail on alignment alternatives for the Lewis Estates to Meadowlark Mall segment
- To collect comments from participants

LRT Workshop Session Schedule

www.edmonton.ca/LRTProjects

West LRT	
May 4, 2010	Lewis Estates to Meadowlark
May 6, 2010	Meadowlark to SPR/142 St.
May 12, 2010	SPR/149 St. to SPR/124 St.
May 13, 2010	Groat Road to Downtown

Southeast LRT	
May 18, 2010	Downtown to 95 Ave/83 St
May 19, 2010	Strathearn to Whyte Ave
May 20, 2010	Wagner Industrial Area
May 26, 2010	Bonnie Doon to Wagner
May 27, 2010	Wagner to Mill Woods

www.edmonton.ca/LRTProjects



Proposed Agenda

www.edmonton.ca/LRTProjects

- Project Background
- Session #1: Right-of-way Alignment
- Session #2: Station Location and Configuration
- Session #3: Neighborhood Access
- Conclusion



West LRT Lewis Estates to Meadowlark

www.edmonton.ca/LRTProjects

Project Background



Where we are in the process?

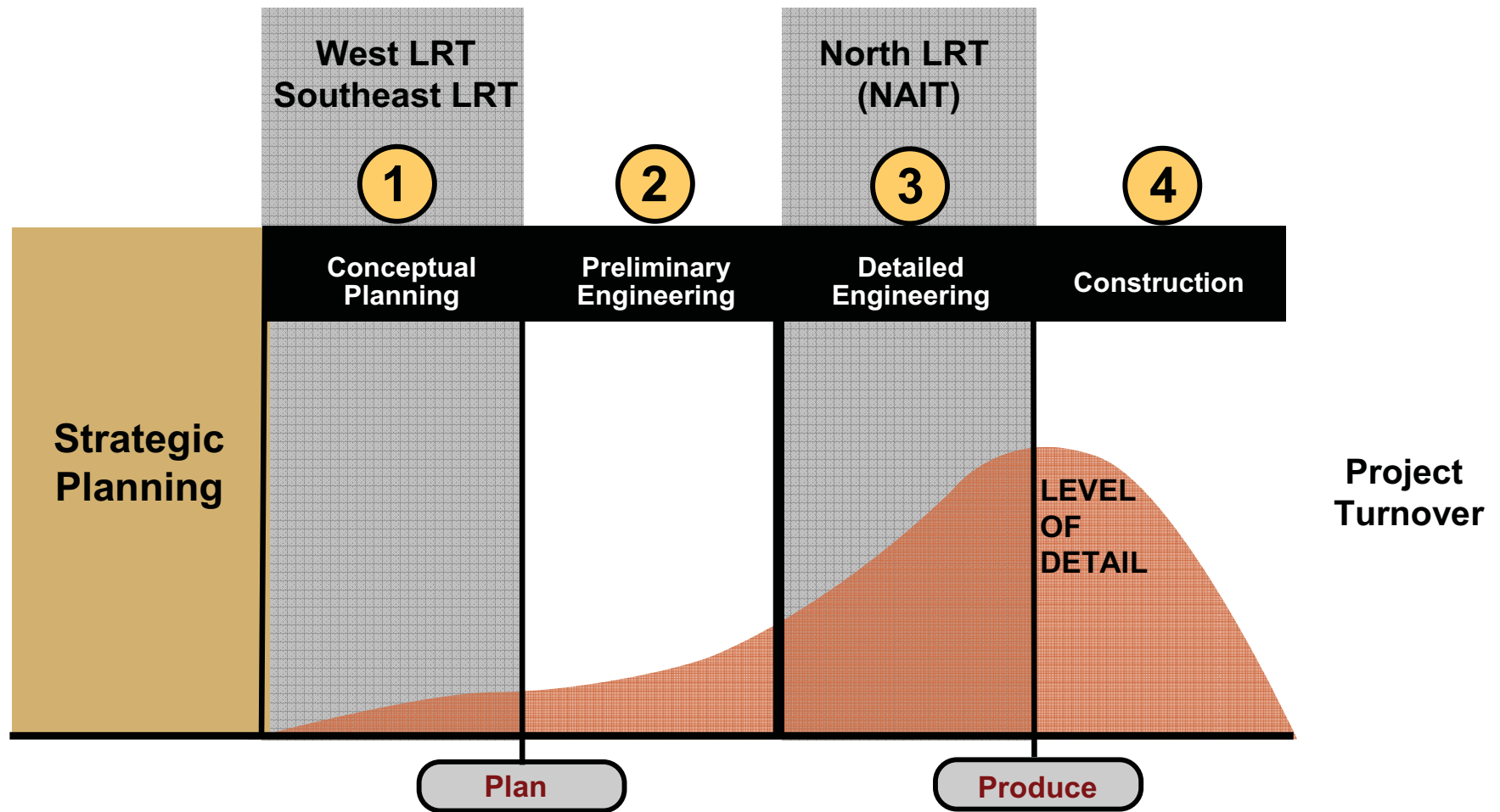
www.edmonton.ca/LRTProjects

Council approvals to date:

- LRT Network Plan (*June 2009*)
- Southeast LRT Corridor (*December 2009*)
- West LRT Corridor (*December 2009*)

Where we are in the process?

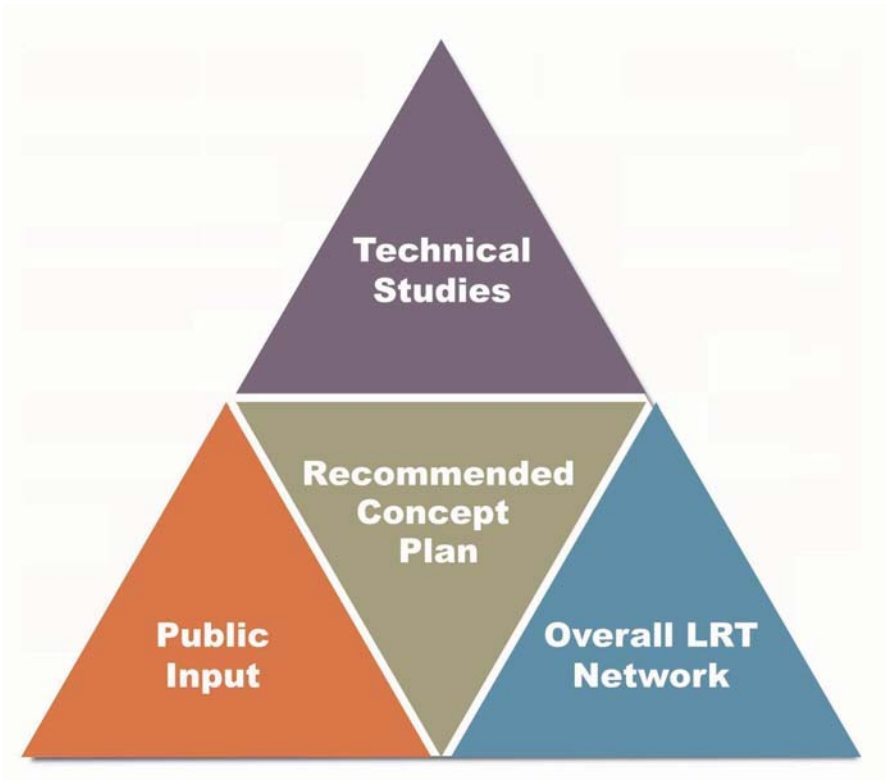
www.edmonton.ca/LRTProjects



Where we are in the process today?

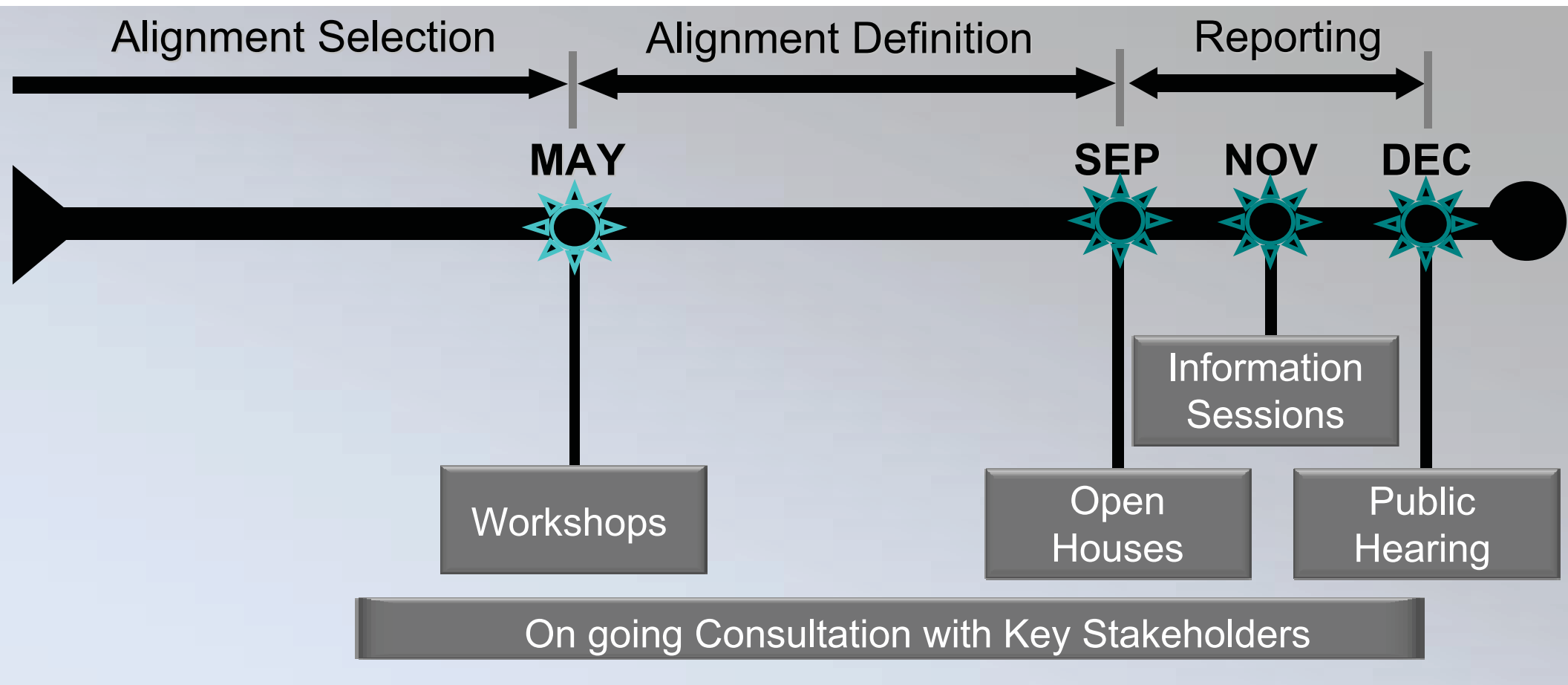
www.edmonton.ca/LRTProjects

- Presenting information (givens):
 - Grade Separations
 - Noise Study
 - Roadway Network
 - Safety
- Collecting participant comment/input (testing ideas):
 - Right-of-way Alignment
 - Station Location
 - Neighborhood Access



Where are we going?

www.edmonton.ca/LRTProjects



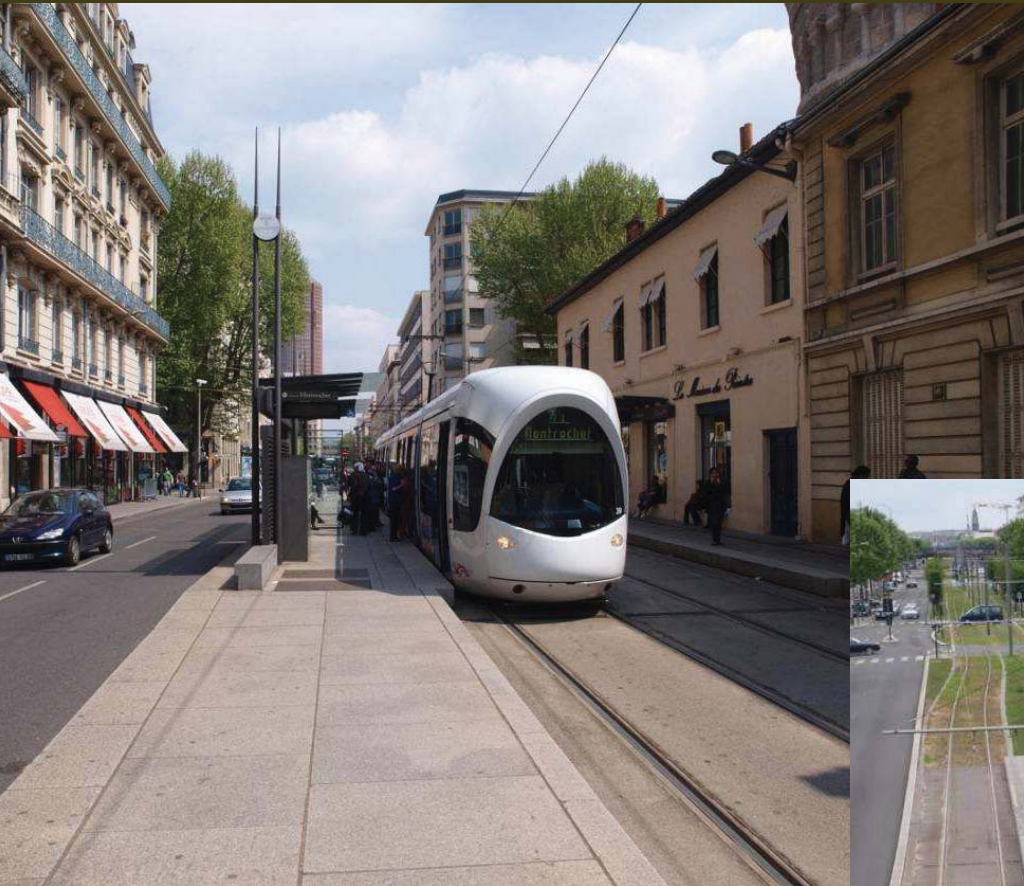
LRT Network

www.edmonton.ca/LRTProjects



Urban Style LRT

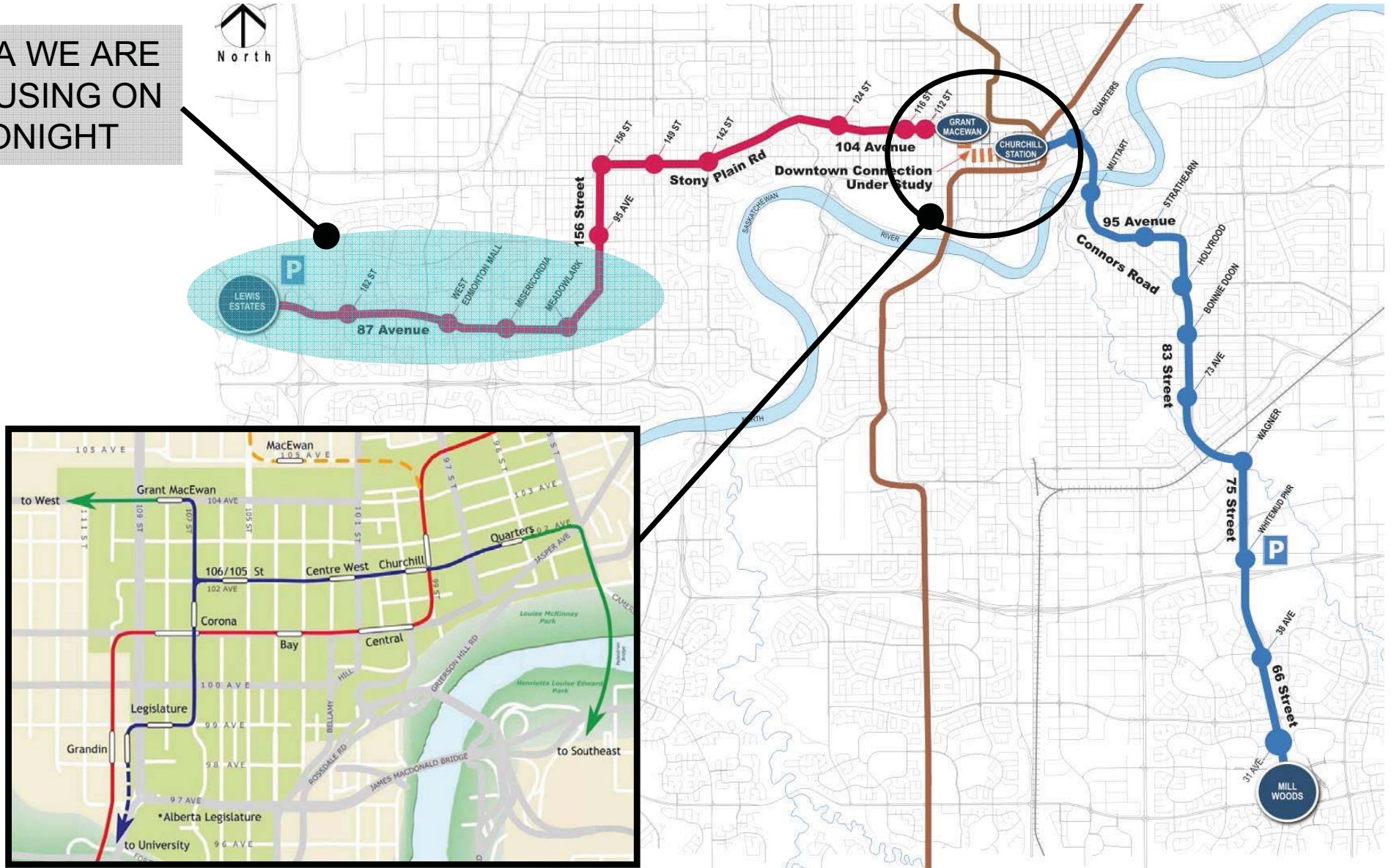
www.edmonton.ca/LRTProjects



Southeast and West LRT Corridors

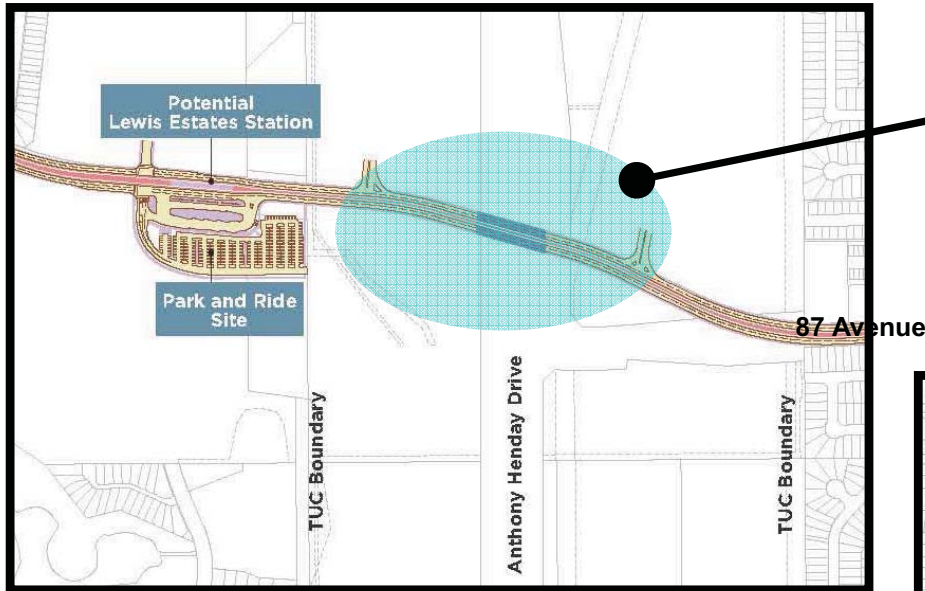
www.edmonton.ca/LRTProjects

AREA WE ARE FOCUSING ON TONIGHT



Bridges/Overpasses

www.edmonton.ca/LRTPProjects



Over Anthony Henday Drive

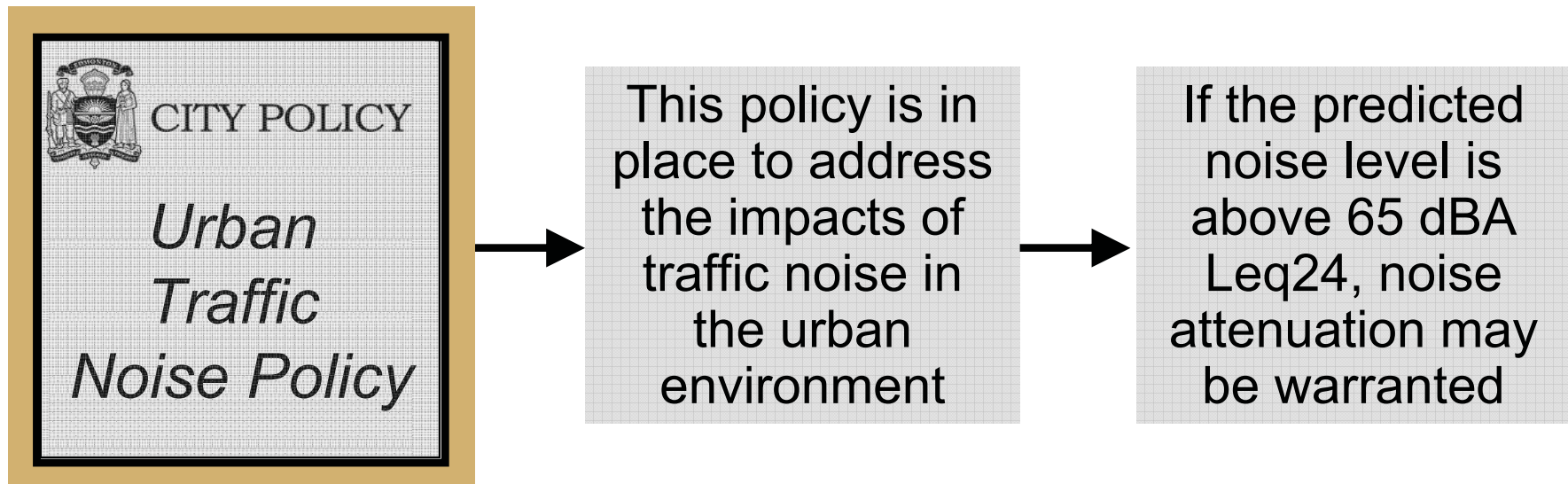


Over 170th Street

LRT Noise Impact

www.edmonton.ca/LRTProjects

- LRT Noise Impact Study underway



Roadway Network

www.edmonton.ca/LRTProjects

On going analysis includes:

- Maintaining Anthony Henday Drive and 170 Street
- Reviewing key intersections
- Park and Ride at Lewis Estates



87 Avenue / 178 Street



Anthony Henday Drive Ramps



87 Avenue / 170 Street



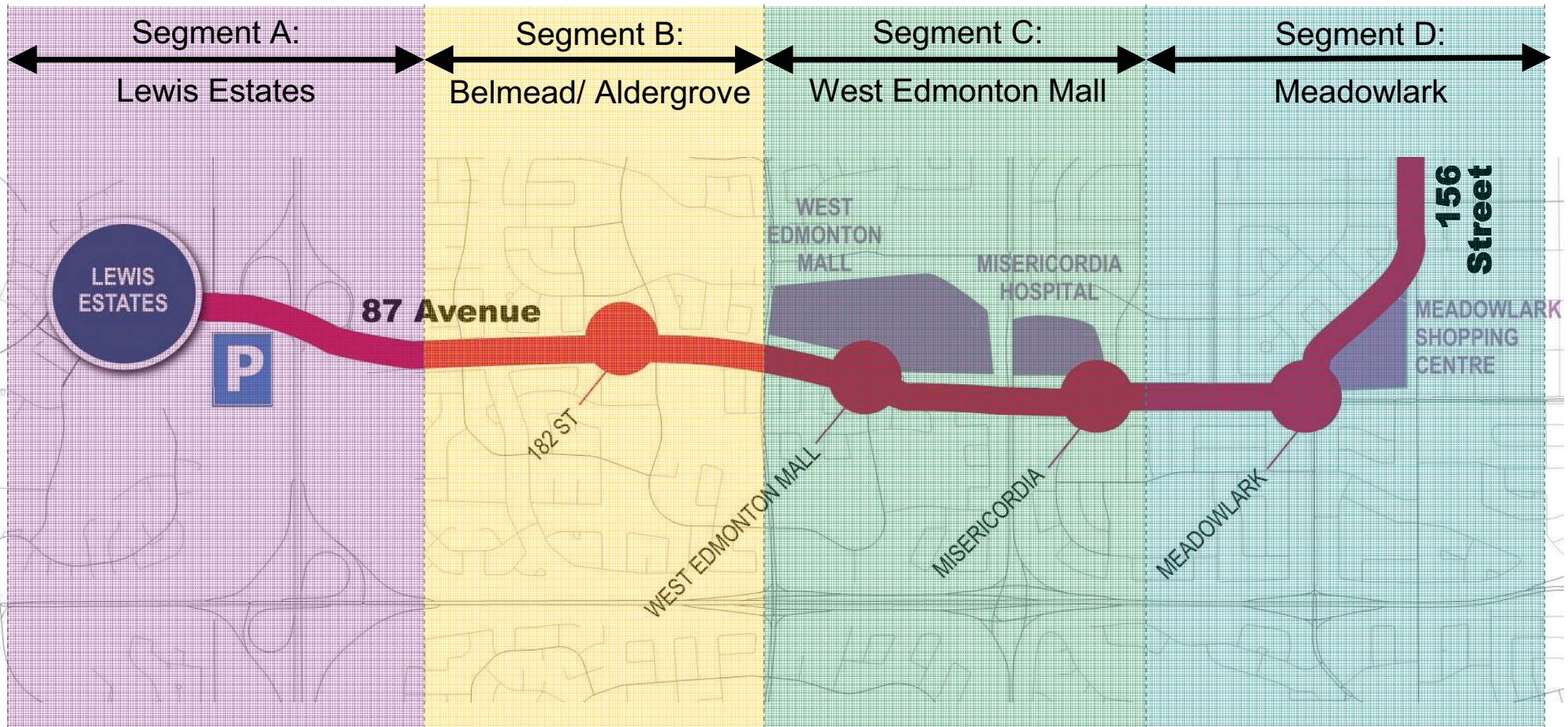
Workshop Session Overview

www.edmonton.ca/LRTProjects

- **Session #1:**
 - Right-of-way Alignment Presentation and Workshop
- **Session #2:**
 - Station Location Presentation and Workshop
- **Session #3:**
 - Neighborhood Access Presentation and Workshop

Neighborhood Groupings

www.edmonton.ca/LRTPProjects





West LRT
Lewis Estates to Meadowlark

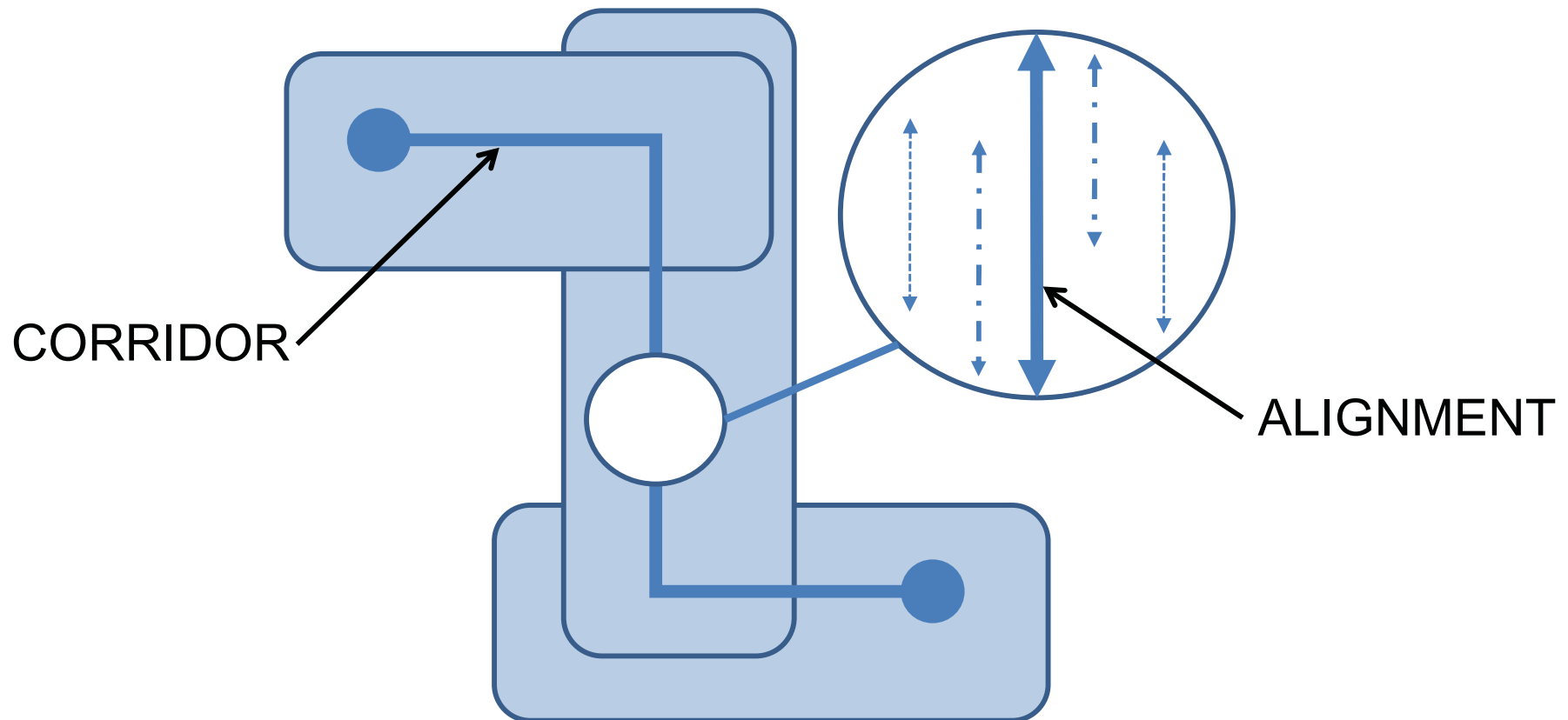
www.edmonton.ca/LRTProjects

Session #1

**Right-of-way (ROW)
Alignment Alternatives**

Corridor vs. Alignment

www.edmonton.ca/LRTProjects



Right-of-Way

www.edmonton.ca/LRTProjects

- There are impacts
- Constrained Rights-of-Way
- Minimize property requirements by removing:
 - service roads
 - traffic lanes
 - on-street parking





ROW Alignment Options

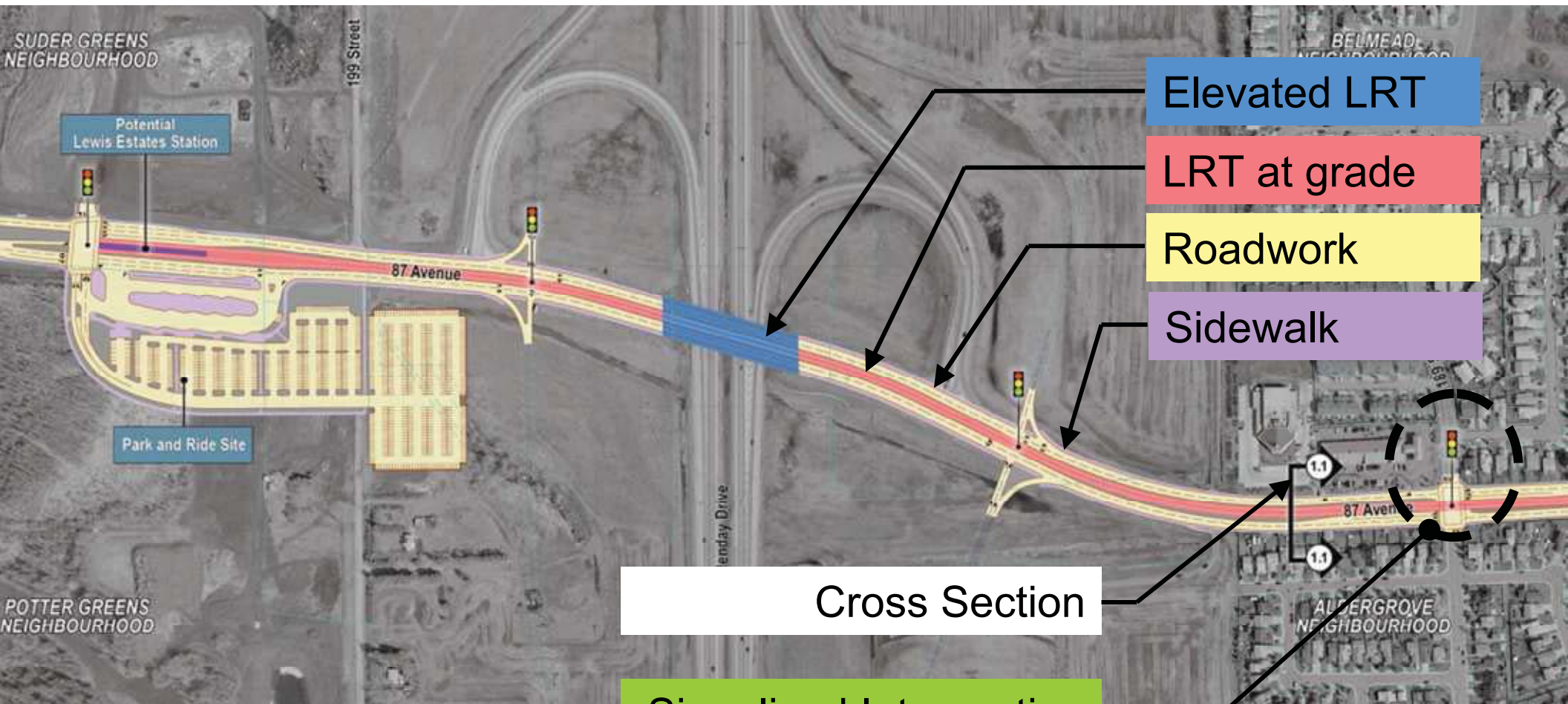
www.edmonton.ca/LRTProjects

Comment on your chosen section

– *What needs to be considered for each alternative?*

Legend

www.edmonton.ca/LRTProjects



- Elevated LRT
- LRT at grade
- Roadwork
- Sidewalk

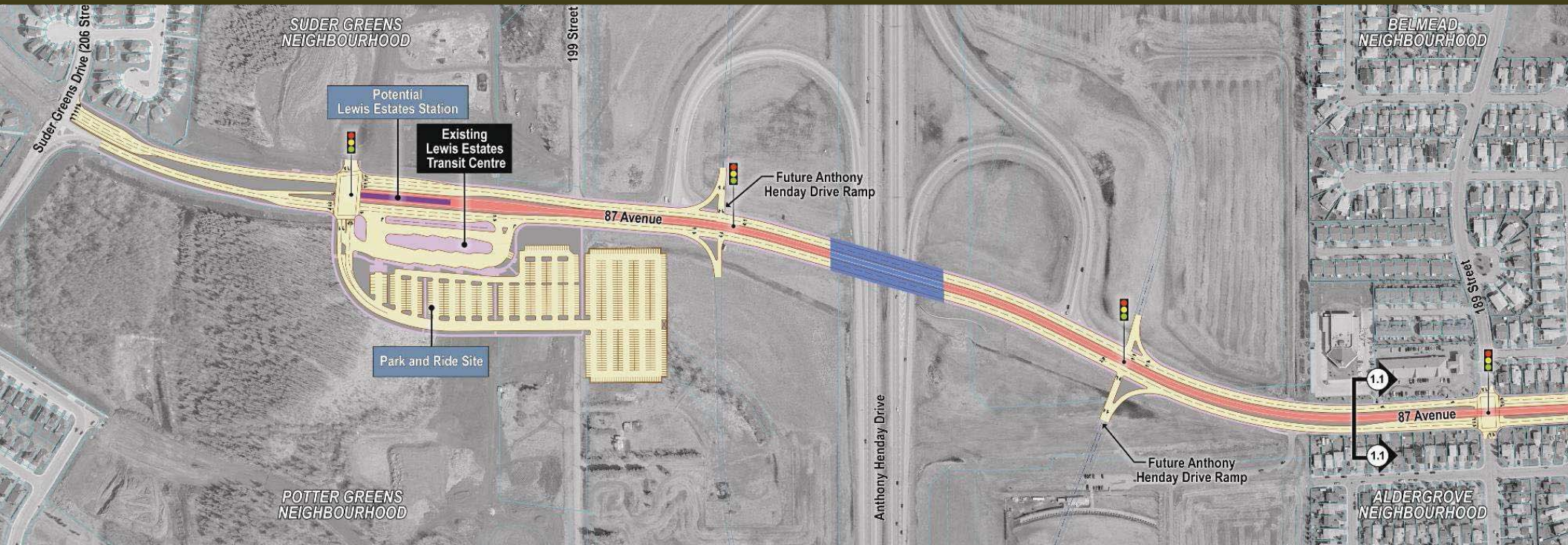
Cross Section

Signalized Intersection

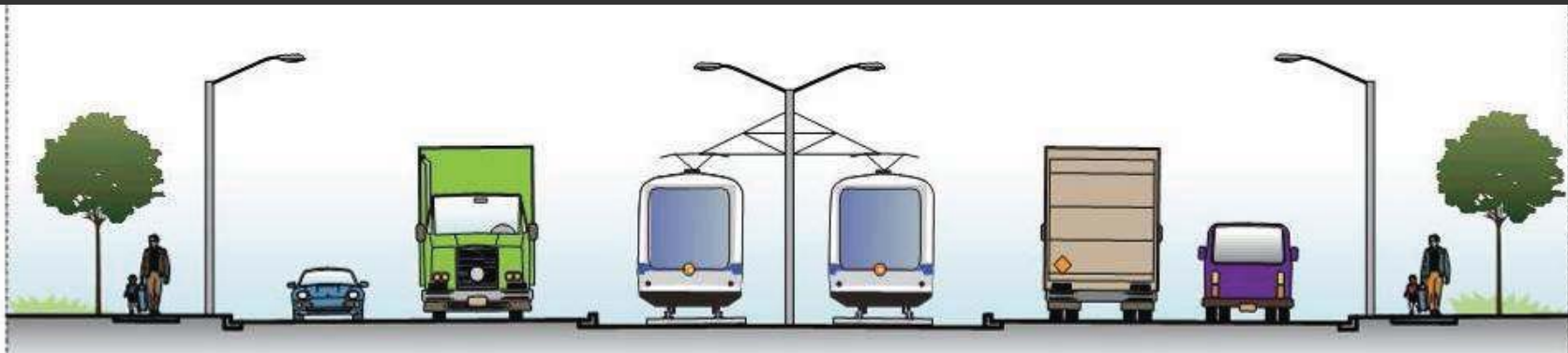
Property Requirements
(not shown on this segment)

ROW Alignment - Segment A

www.edmonton.ca/LRTProjects



ALTERNATIVE 1 – Centre Running LRT

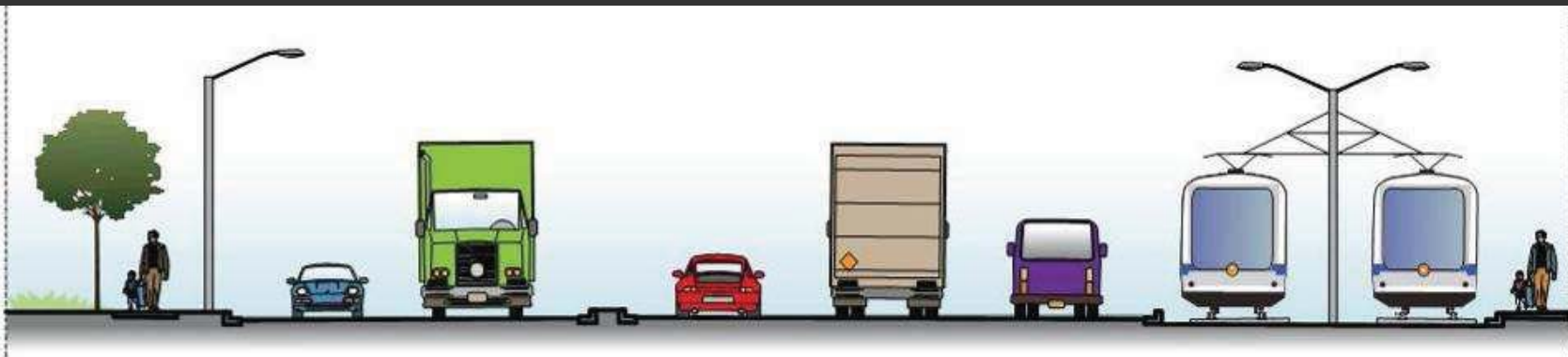


ROW Alignment - Segment A

www.edmonton.ca/LRTPProjects

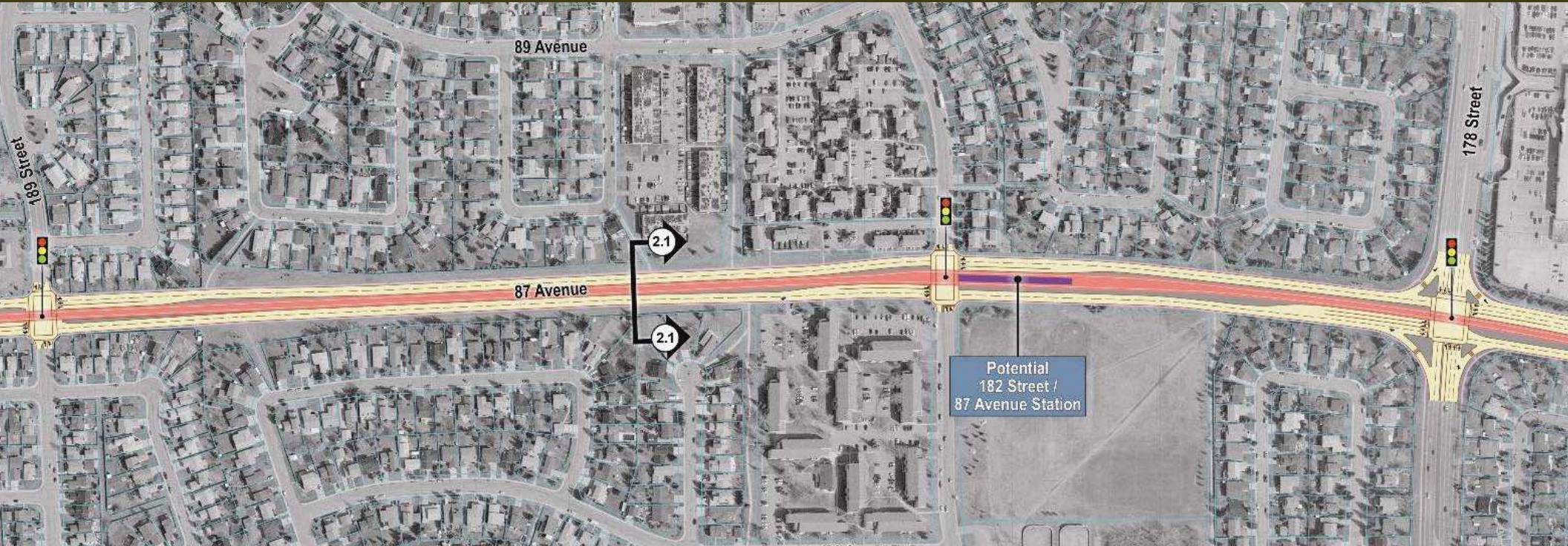


ALTERNATIVE 2 – South Running LRT

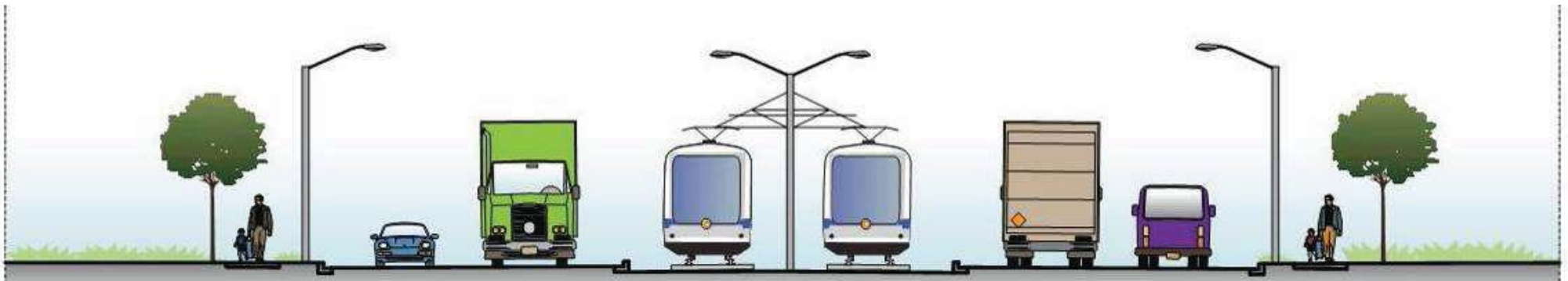


ROW Alignment - Segment B

www.edmonton.ca/LRTPProjects



ALTERNATIVE 1 – Centre Running LRT



ROW Alignment - Segment B

www.edmonton.ca/LRTProjects

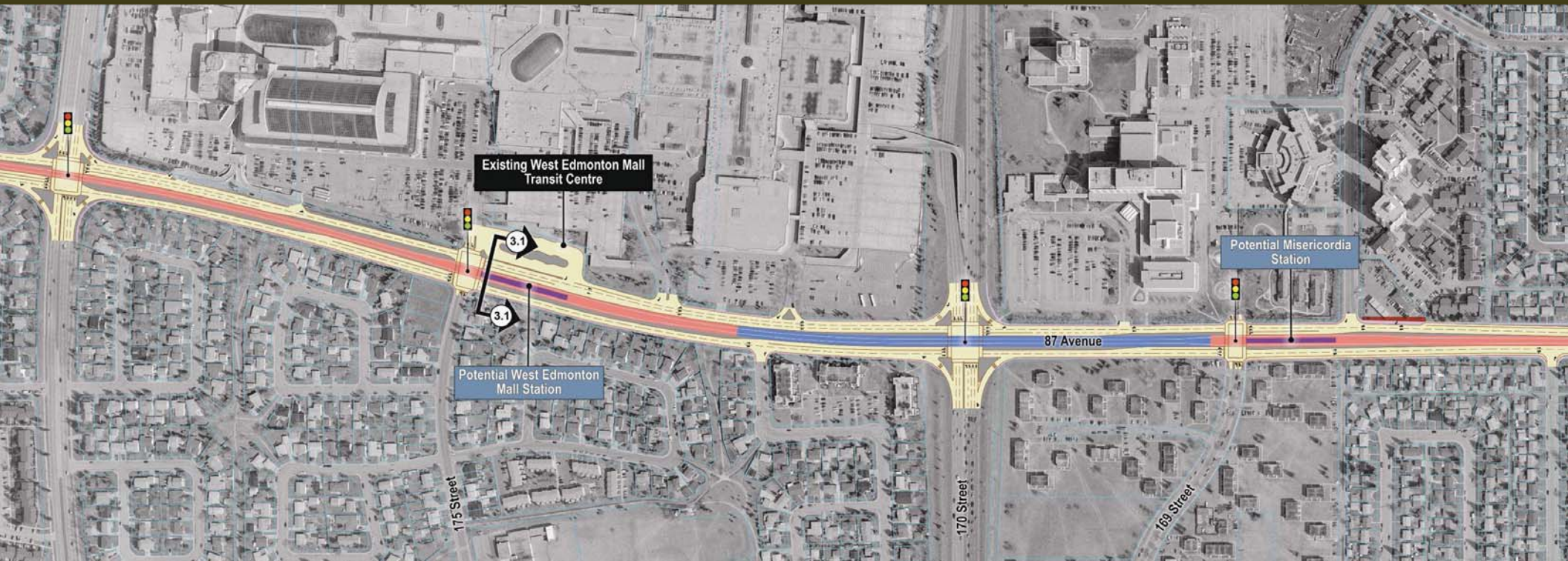


ALTERNATIVE 2 – South Running LRT

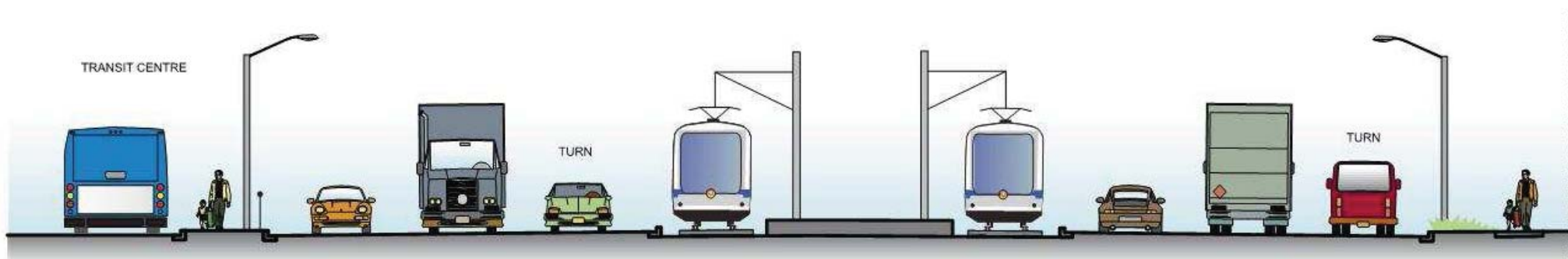


ROW Alignment - Segment C

www.edmonton.ca/LRTProjects

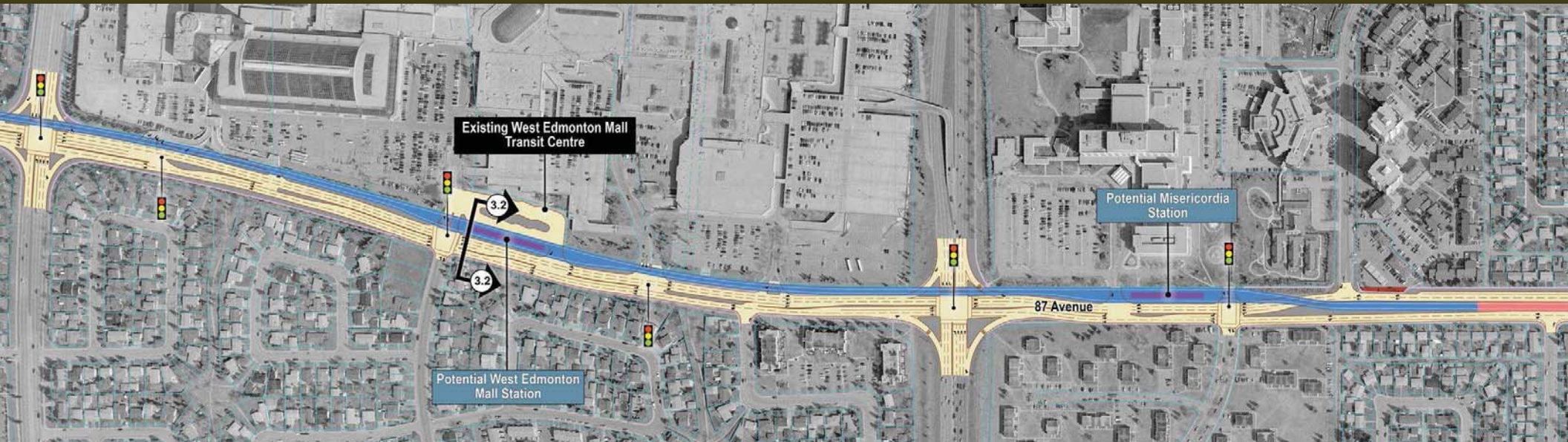


ALTERNATIVE 1 – Centre Running LRT

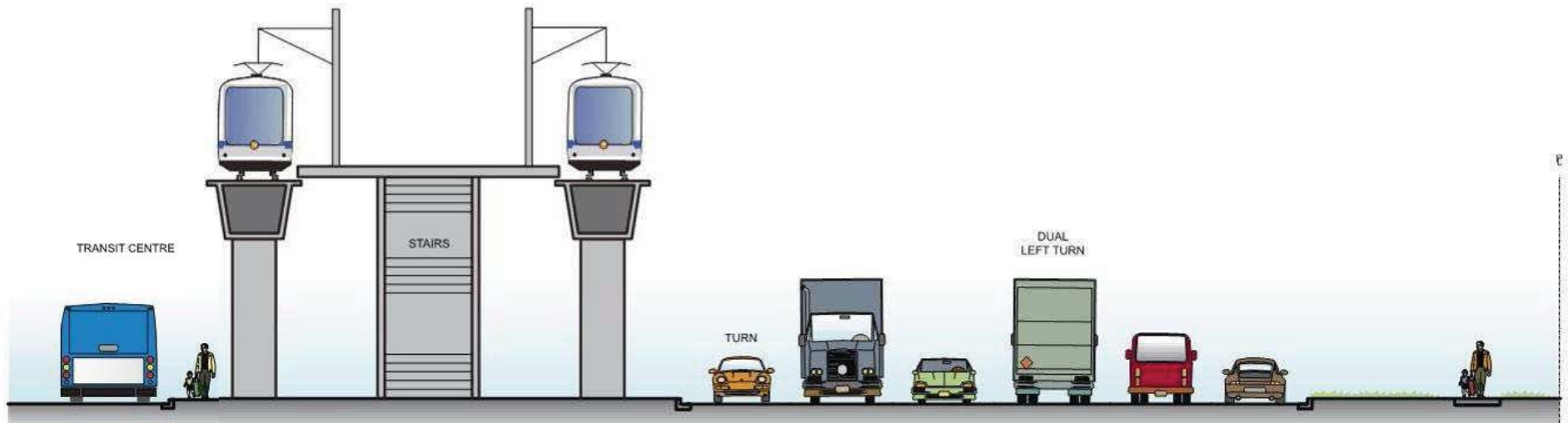


ROW Alignment - Segment C

www.edmonton.ca/LRTProjects

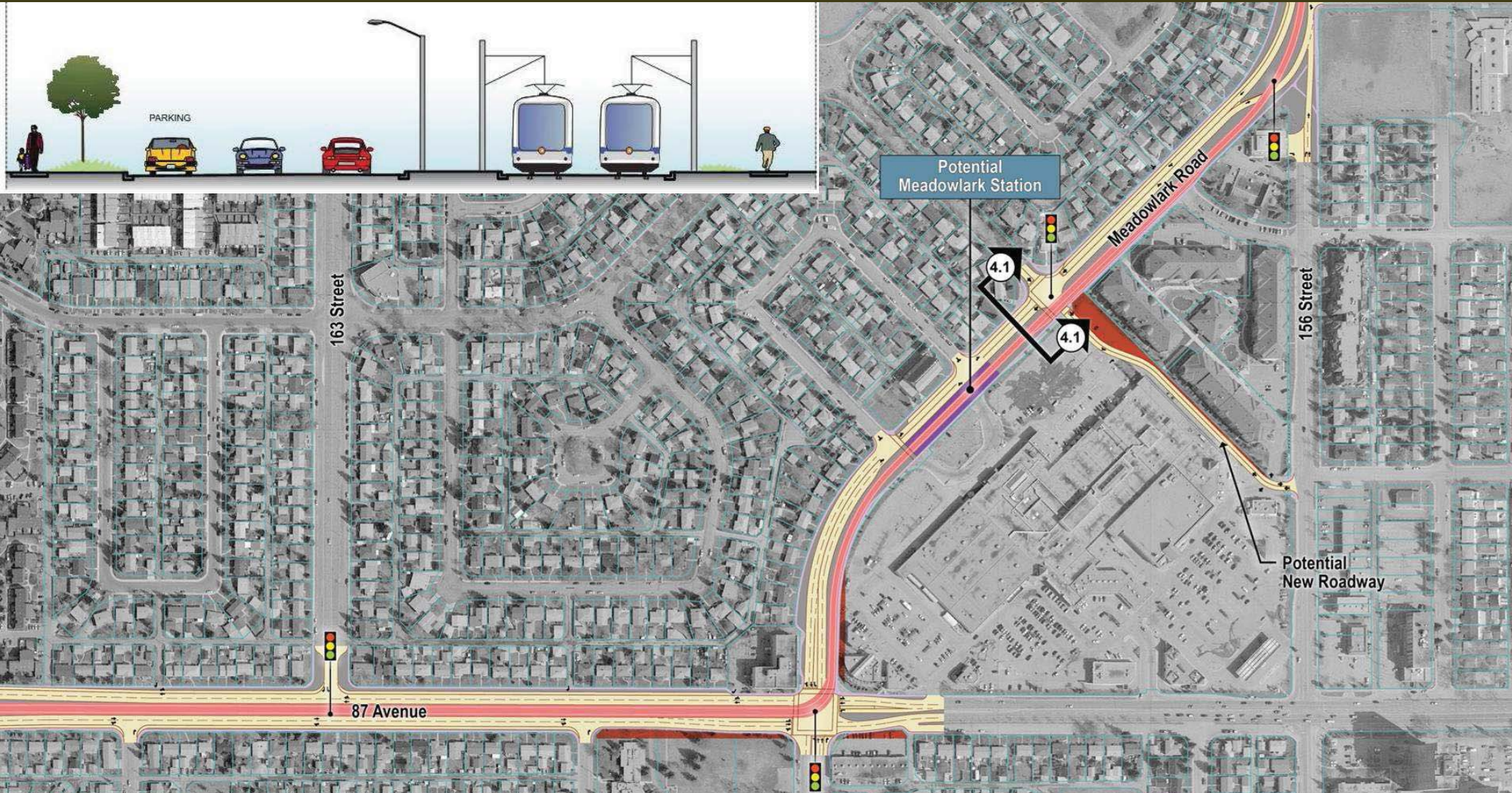
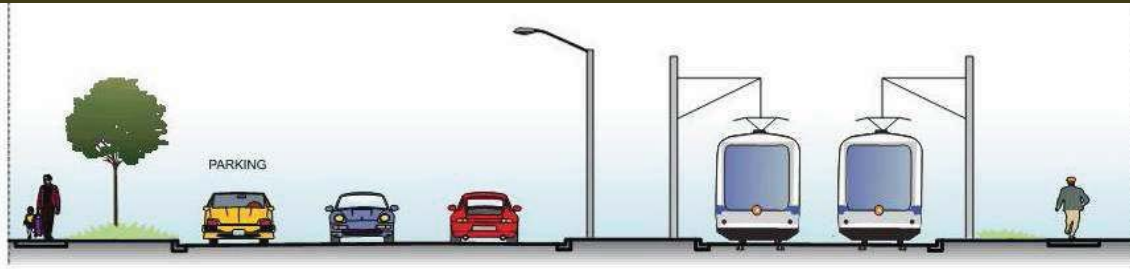


ALTERNATIVE 2 – North Running LRT



ROW Alignment - Segment D

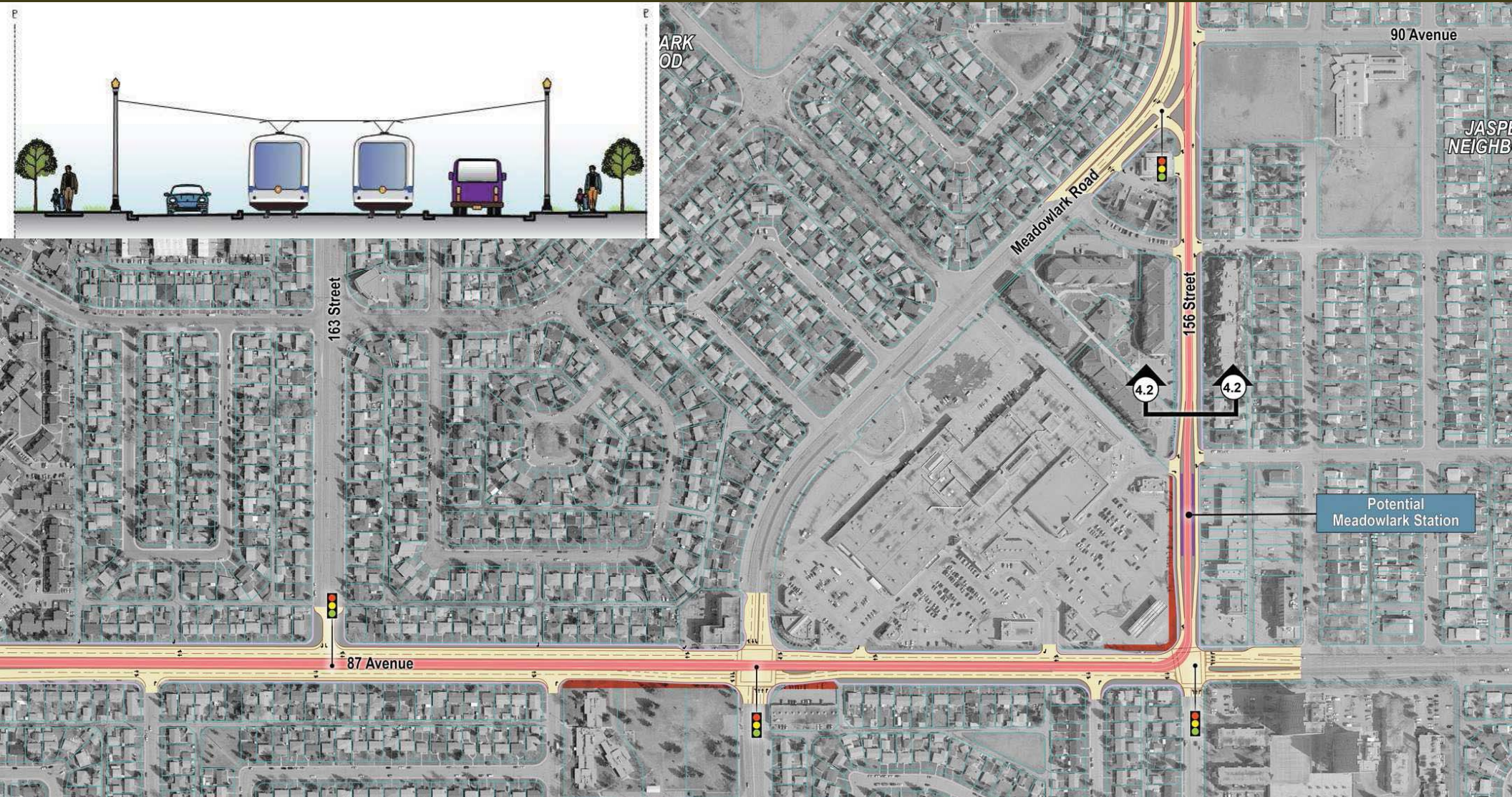
www.edmonton.ca/LRTProjects



ALTERNATIVE 1 – Meadowlark Road

ROW Alignment - Segment D

www.edmonton.ca/LRTPProjects



ALTERNATIVE 2 – 156 Street



ROW Alignment – Workshop

www.edmonton.ca/LRTProjects

Workshop #1

- Givens
 - Technical work is on going
 - Corridors are approved by City Council
 - LRT grade separated where technically required



ROW Alignment – Workshop Question

www.edmonton.ca/LRTProjects

Comment on your chosen section

Given that the corridor has been defined and that we are only talking about the ROW alignment alternatives,

– What needs to be considered for each alternative?



West LRT
Lewis Estates to Meadowlark

www.edmonton.ca/LRTProjects

Session #2

Station Location and Configuration



Station Location and Configuration Options

www.edmonton.ca/LRTProjects

Comment on your chosen section

- *How does this station fit into your neighborhood?*
- *What else do we need to consider?*

Simple Stop Design

www.edmonton.ca/LRTPProjects

Low floor vehicles and platforms provide:

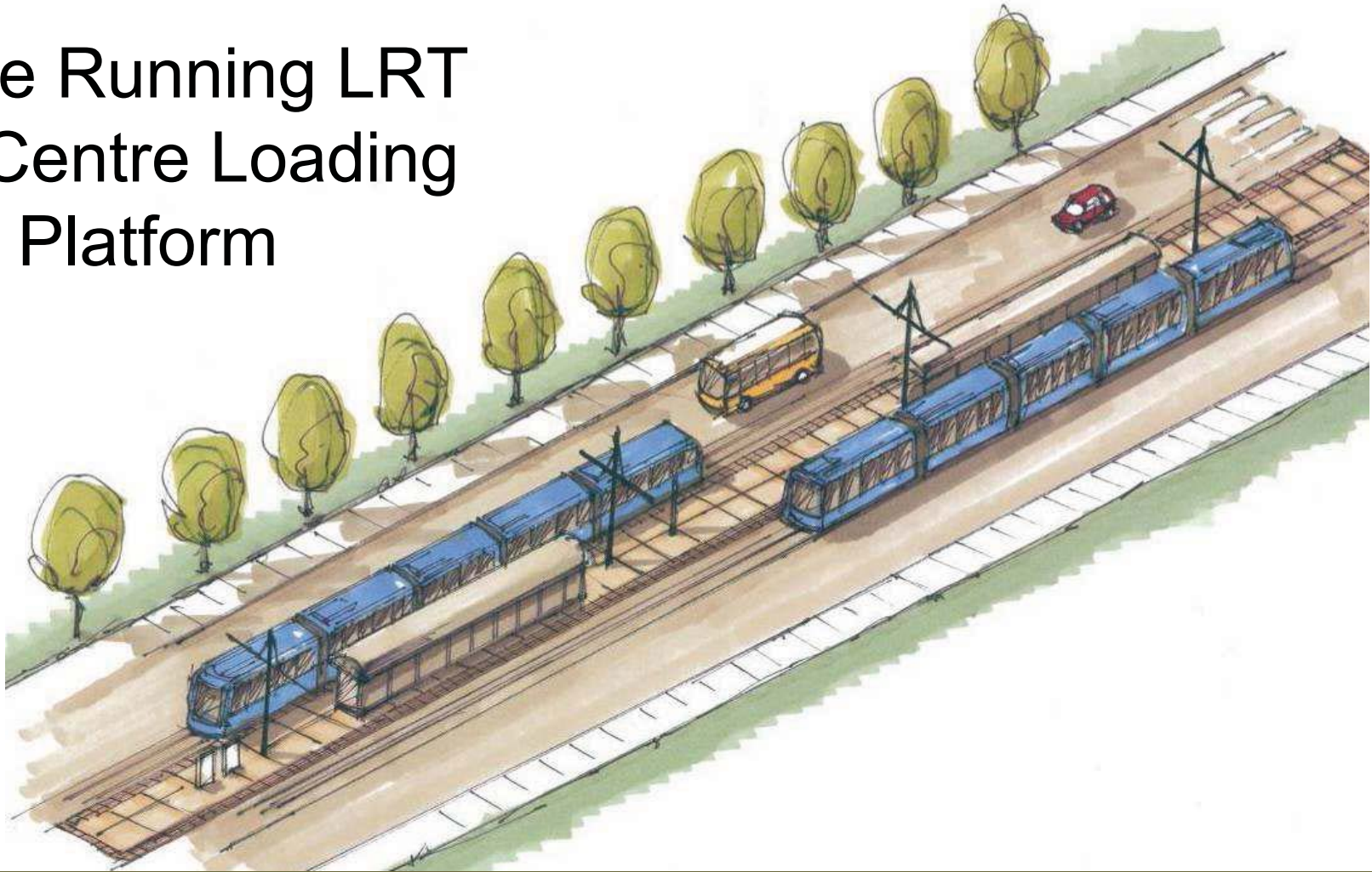
- Simple Infrastructure
- Fits into surrounding areas
- Improved neighbourhood connections



Station Configuration

www.edmonton.ca/LRTProjects

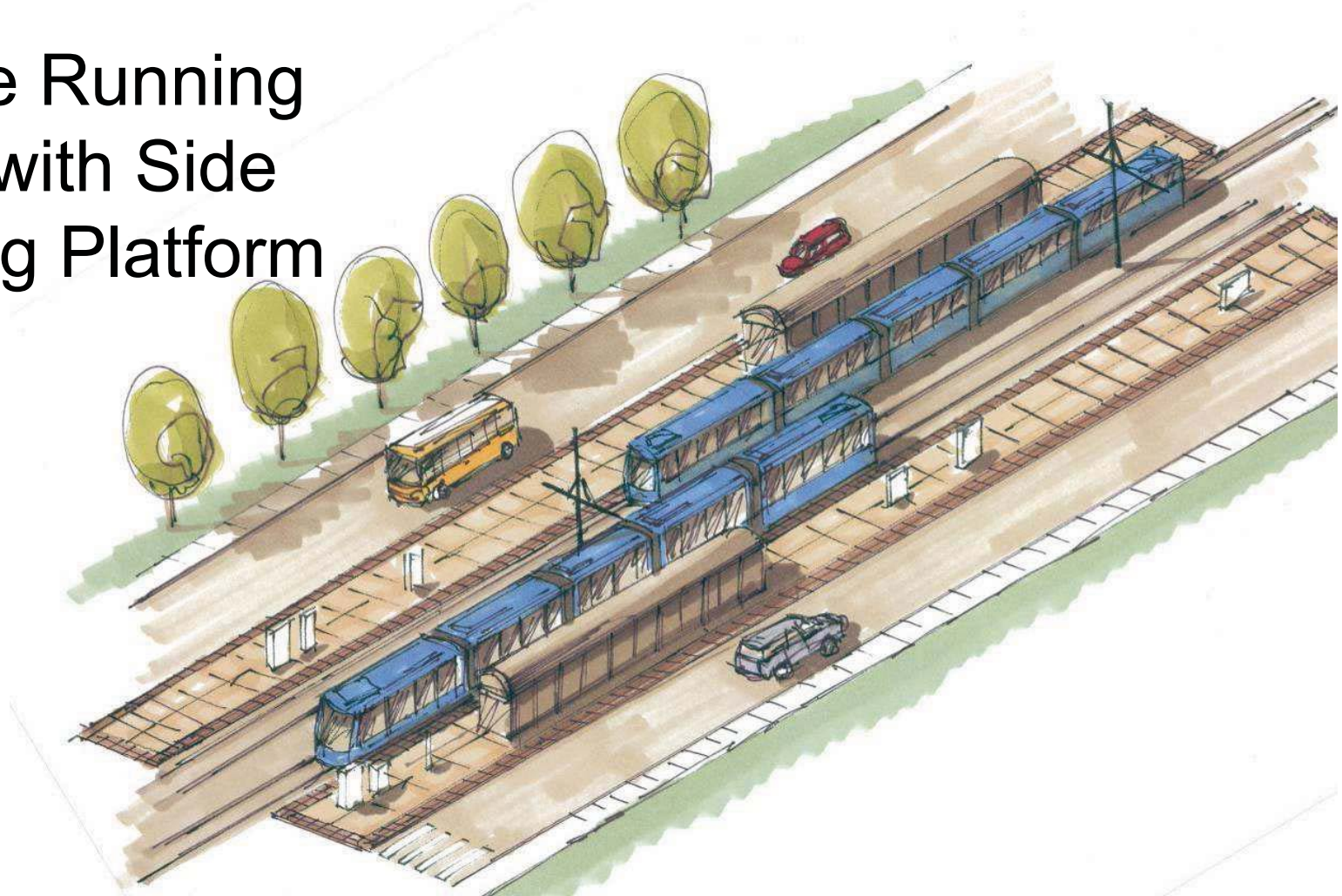
Centre Running LRT with Centre Loading Platform



Station Configuration

www.edmonton.ca/LRTProjects

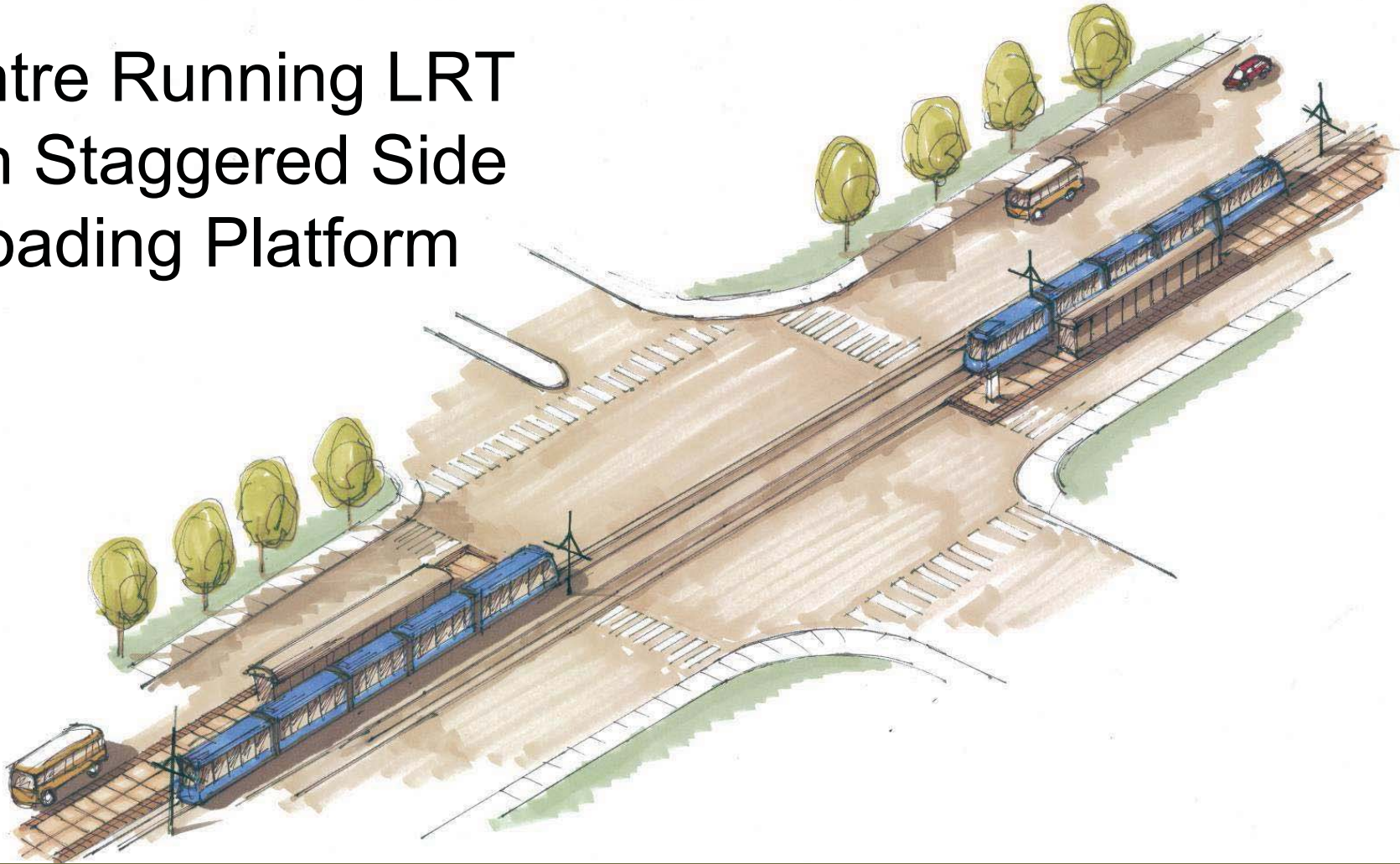
Centre Running
LRT with Side
Loading Platform



Station Configuration

www.edmonton.ca/LRTProjects

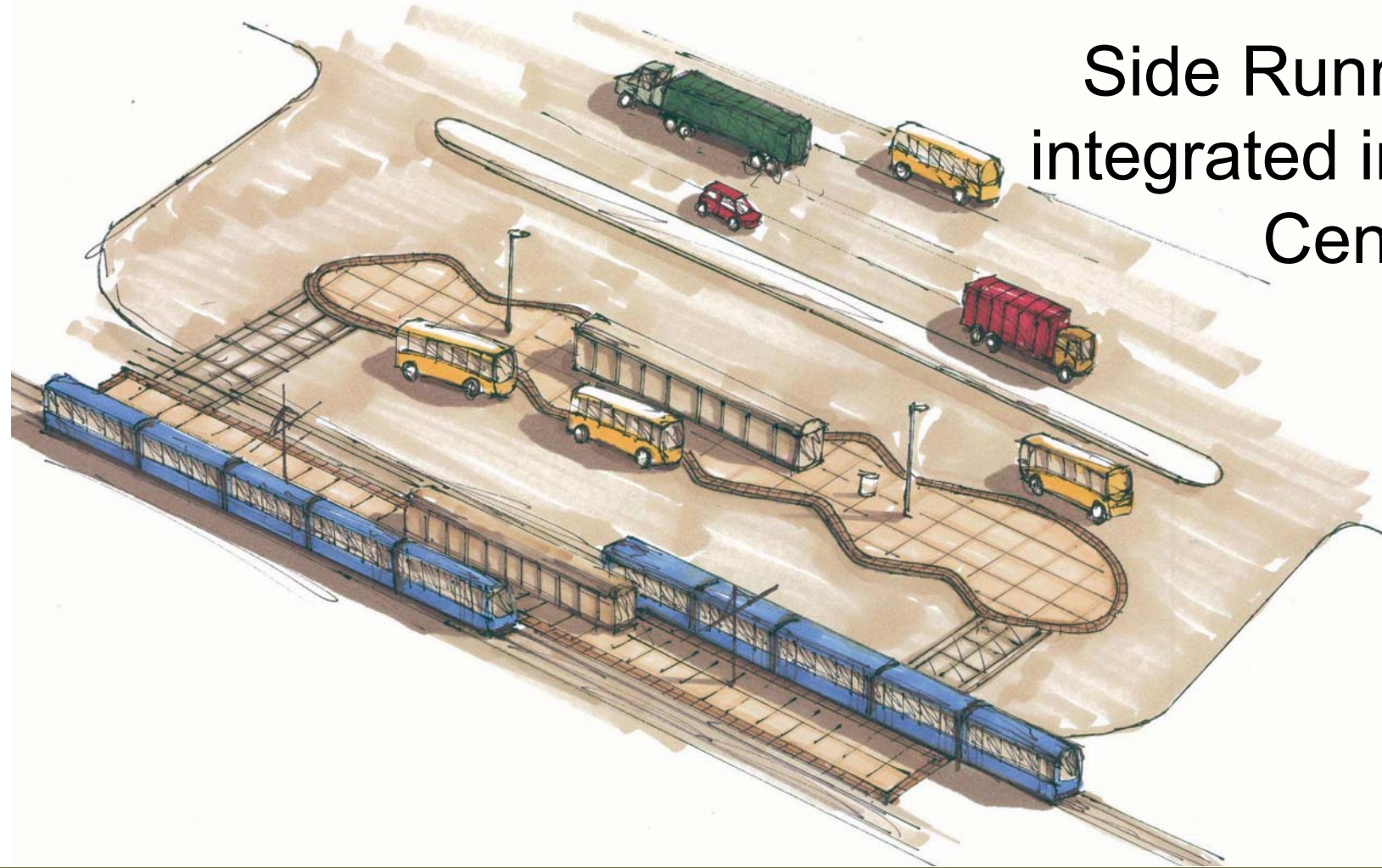
Centre Running LRT
with Staggered Side
Loading Platform



Station Configuration

www.edmonton.ca/LRTPProjects

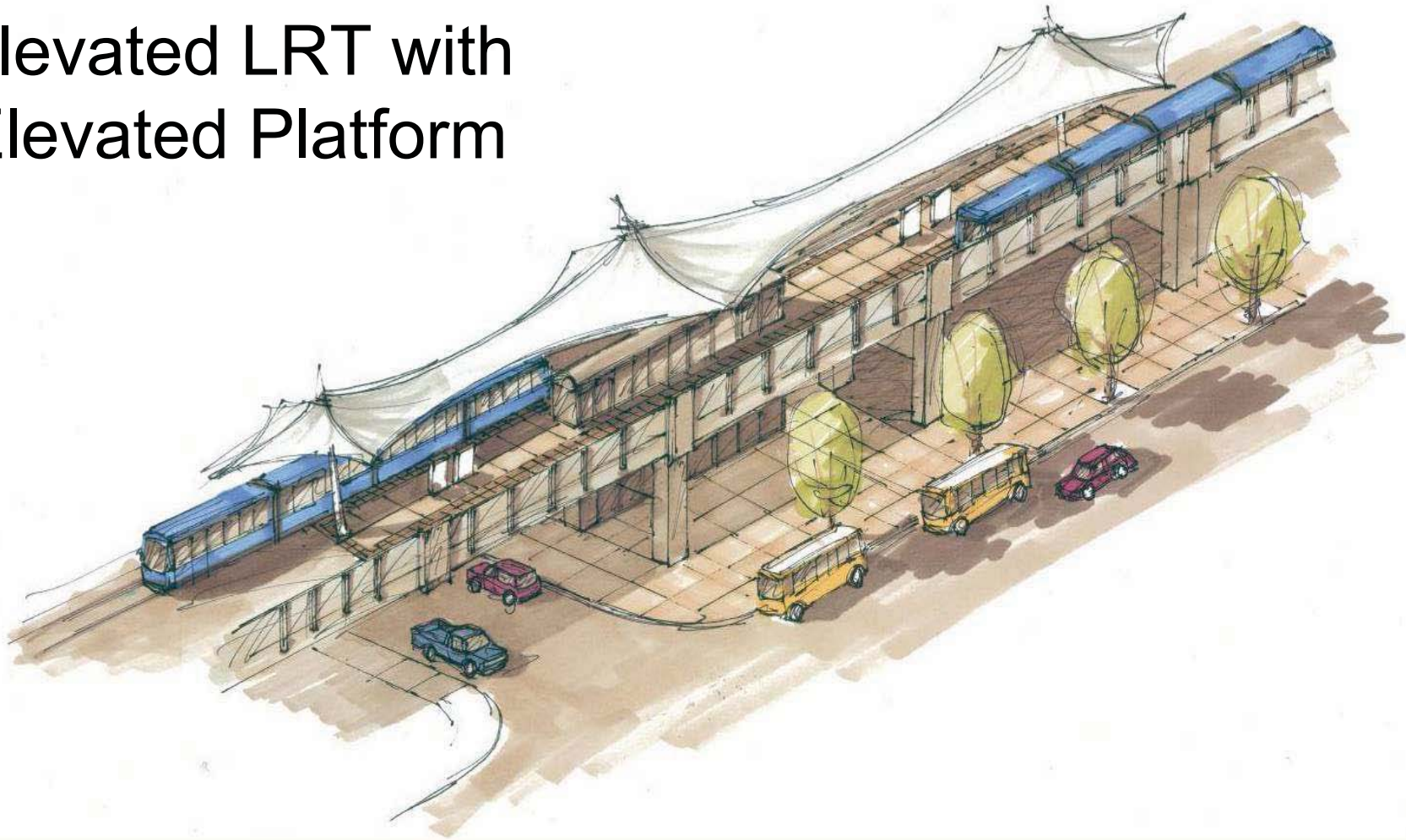
Side Running LRT
integrated into Transit
Centre



Station Configuration

www.edmonton.ca/LRTProjects

Elevated LRT with Elevated Platform





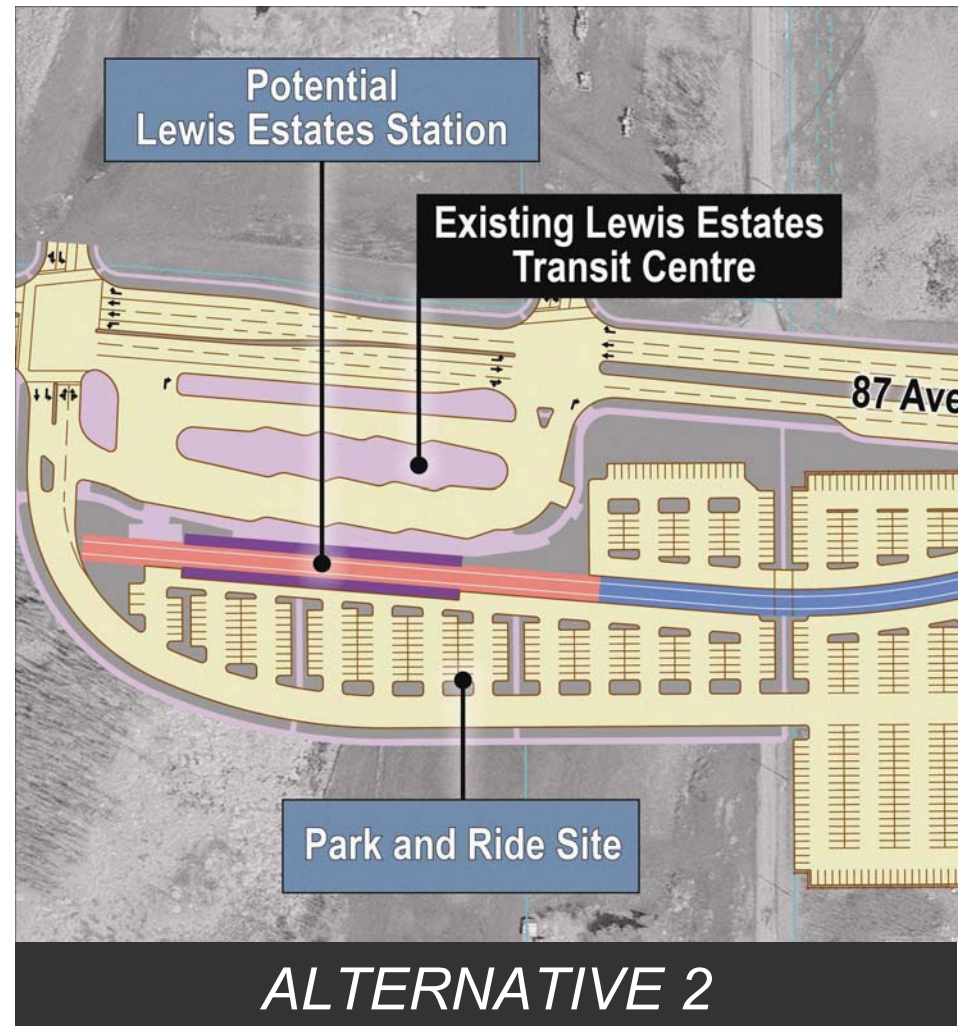
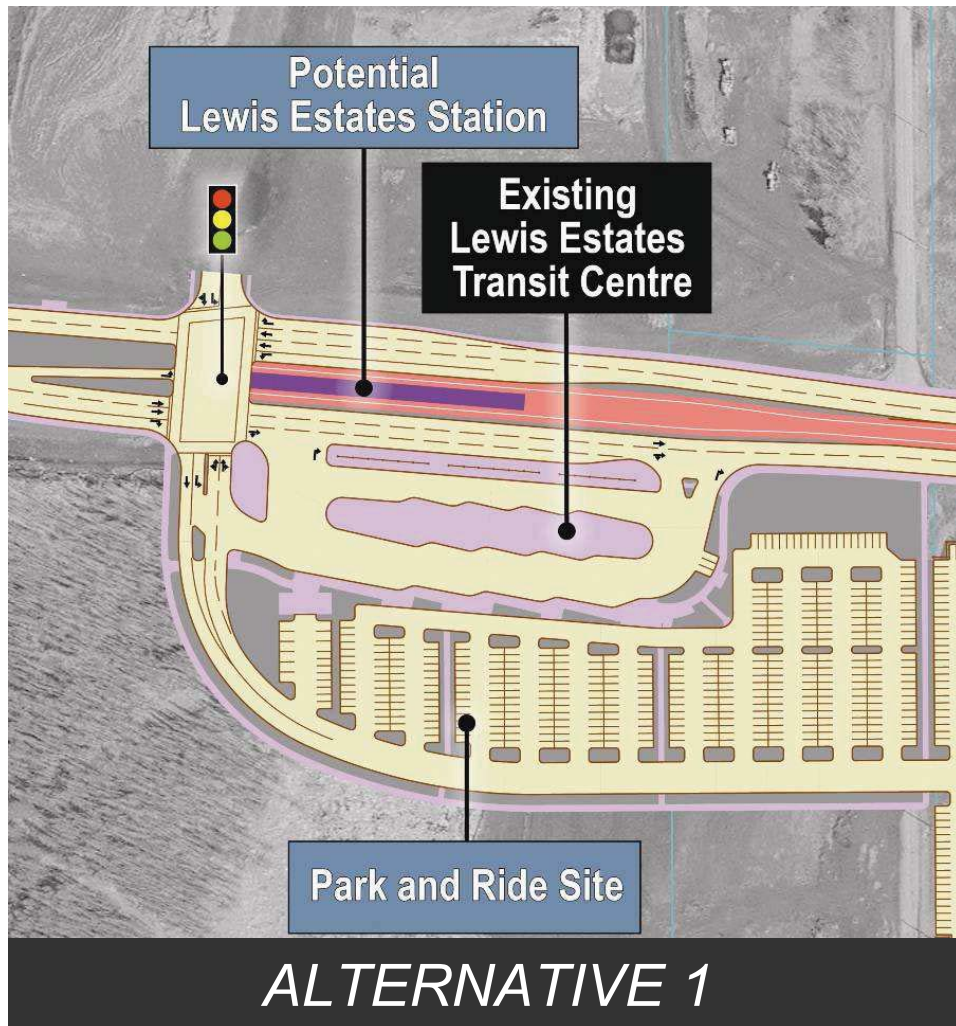
Overview Station Alternatives

www.edmonton.ca/LRTProjects

- Overview of station alternatives at:
 - Lewis Estates Station
 - 182 Street Station
 - West Edmonton Mall Station
 - Misericordia Station
 - Meadowlark Station

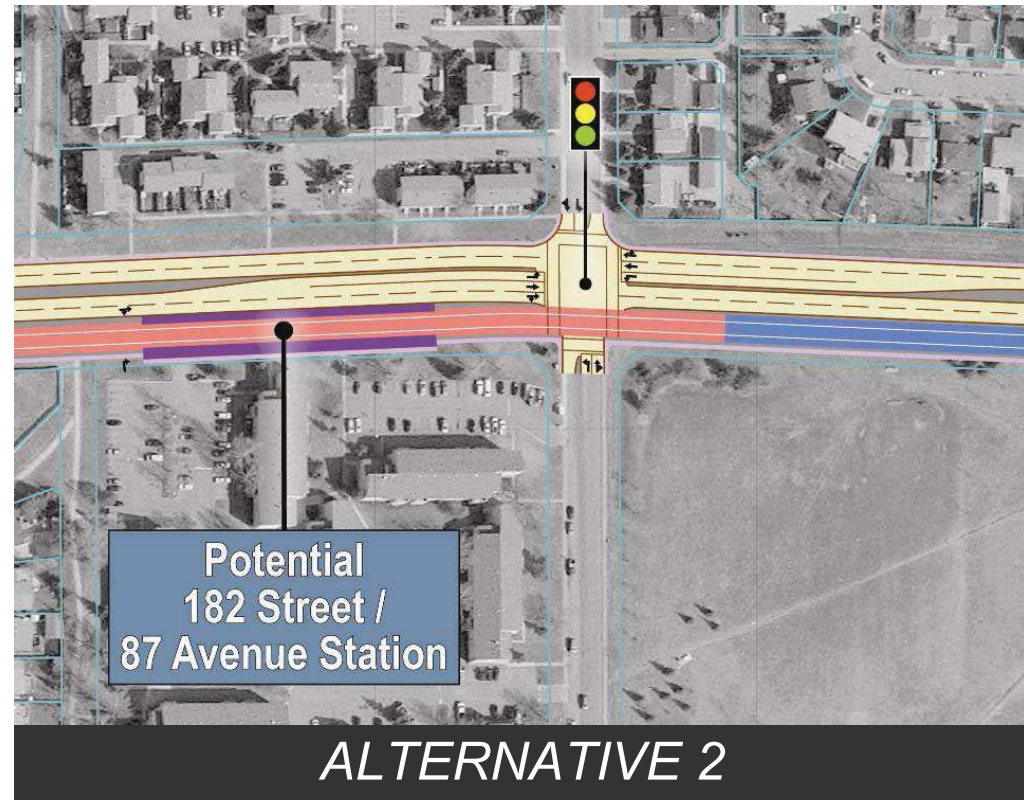
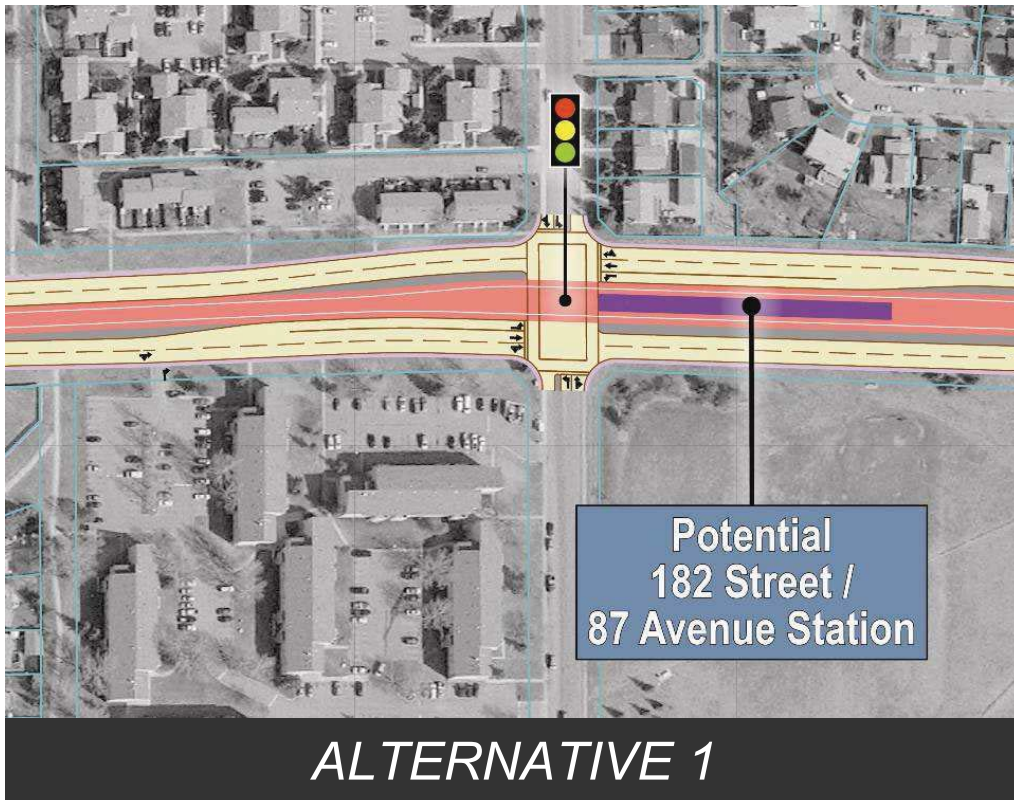
Lewis Estates Station

www.edmonton.ca/LRTPProjects



182 Street Station

www.edmonton.ca/LRTPProjects



West Edmonton Mall Station

www.edmonton.ca/LRTPProjects

Existing West Edmonton Mall
Transit Centre



3.1

3.1

Potential West Edmonton
Mall Station

ALTERNATIVE 1

Existing West Edmonton Mall
Transit Centre



3.2

3.2

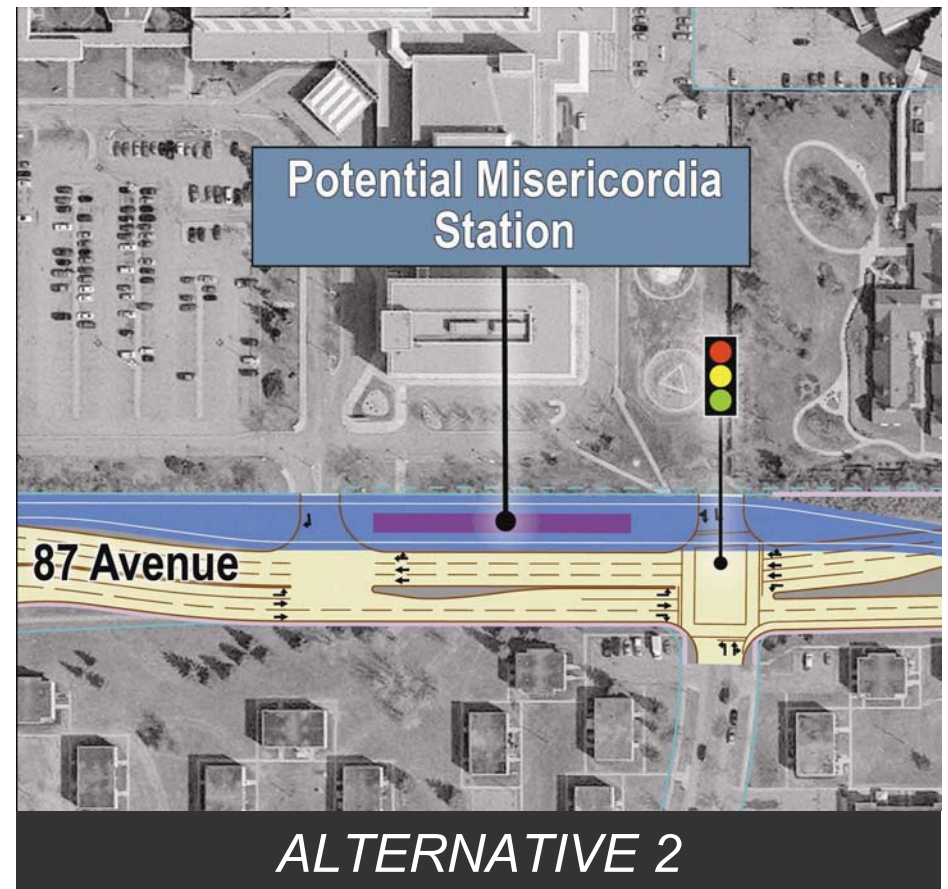
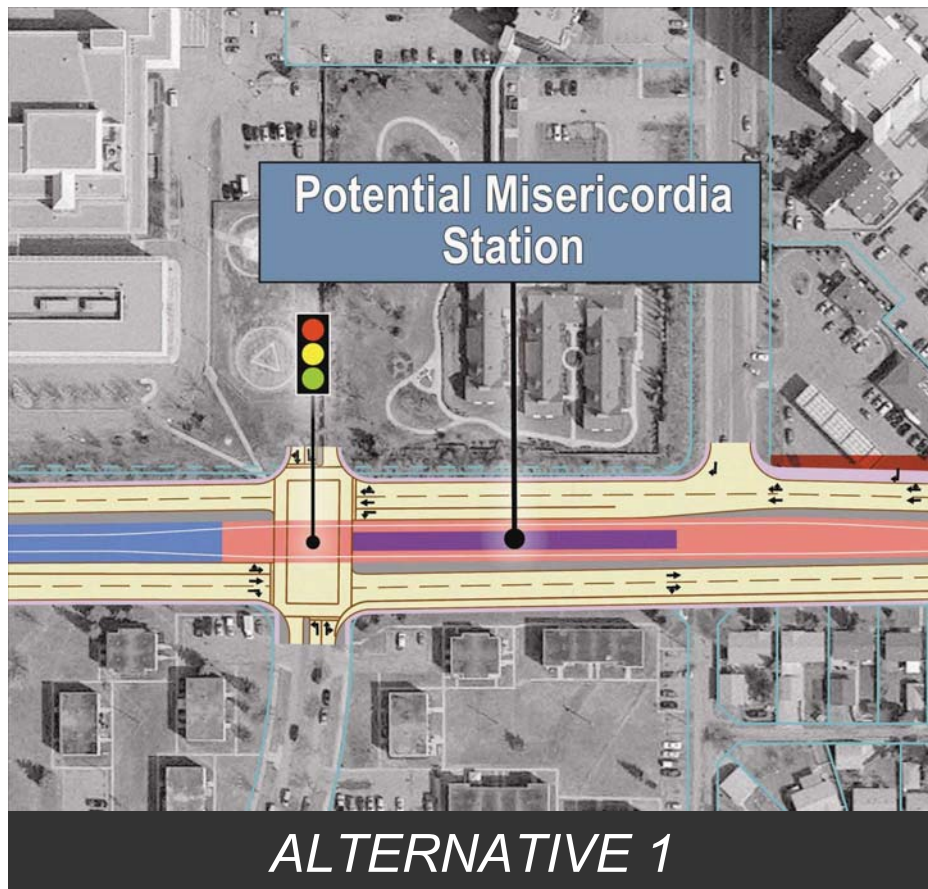
Potential West Edmonton
Mall Station

ALTERNATIVE 2



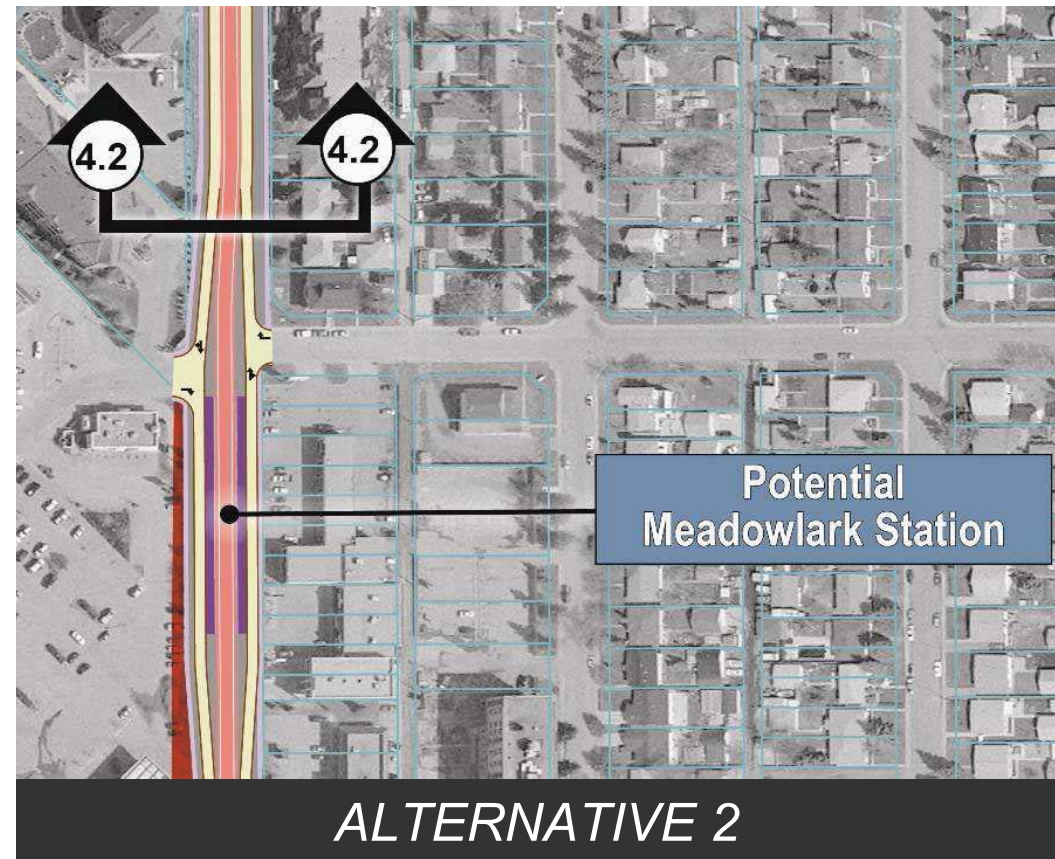
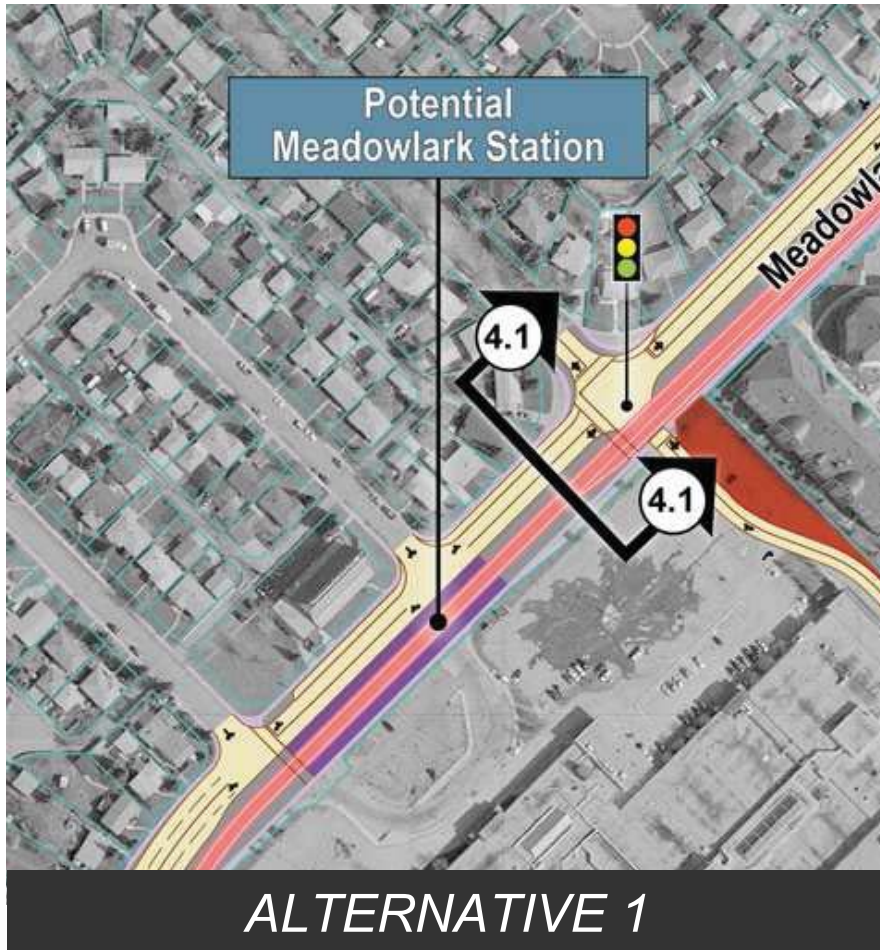
Misericordia Station

www.edmonton.ca/LRTPProjects



Meadowlark Station

www.edmonton.ca/LRTProjects





Stations - Workshop Questions

www.edmonton.ca/LRTProjects

Comment on the station in your neighborhood

- How does this station fit into your neighborhood?*
- What else do we need to consider?*



West LRT

Lewis Estates to Meadowlark

www.edmonton.ca/LRTProjects

Break



West LRT
Lewis Estates to Meadowlark

www.edmonton.ca/LRTProjects

Session #3

Neighbourhood Access



Neighbourhood Access

www.edmonton.ca/LRTProjects

Comment on your chosen section

- *How does LRT affect the way you get around and in/out of your neighborhood?*

Neighbourhood Access

www.edmonton.ca/LRTProjects

Basic Principles of Neighbourhood Access:

- Different roads serve different purposes
- LRT will change direct access to roads within its corridor (like 87 avenue)
- Traffic signals will be located on major roads to facilitate LRT movement



Neighbourhood Access

www.edmonton.ca/LRTProjects

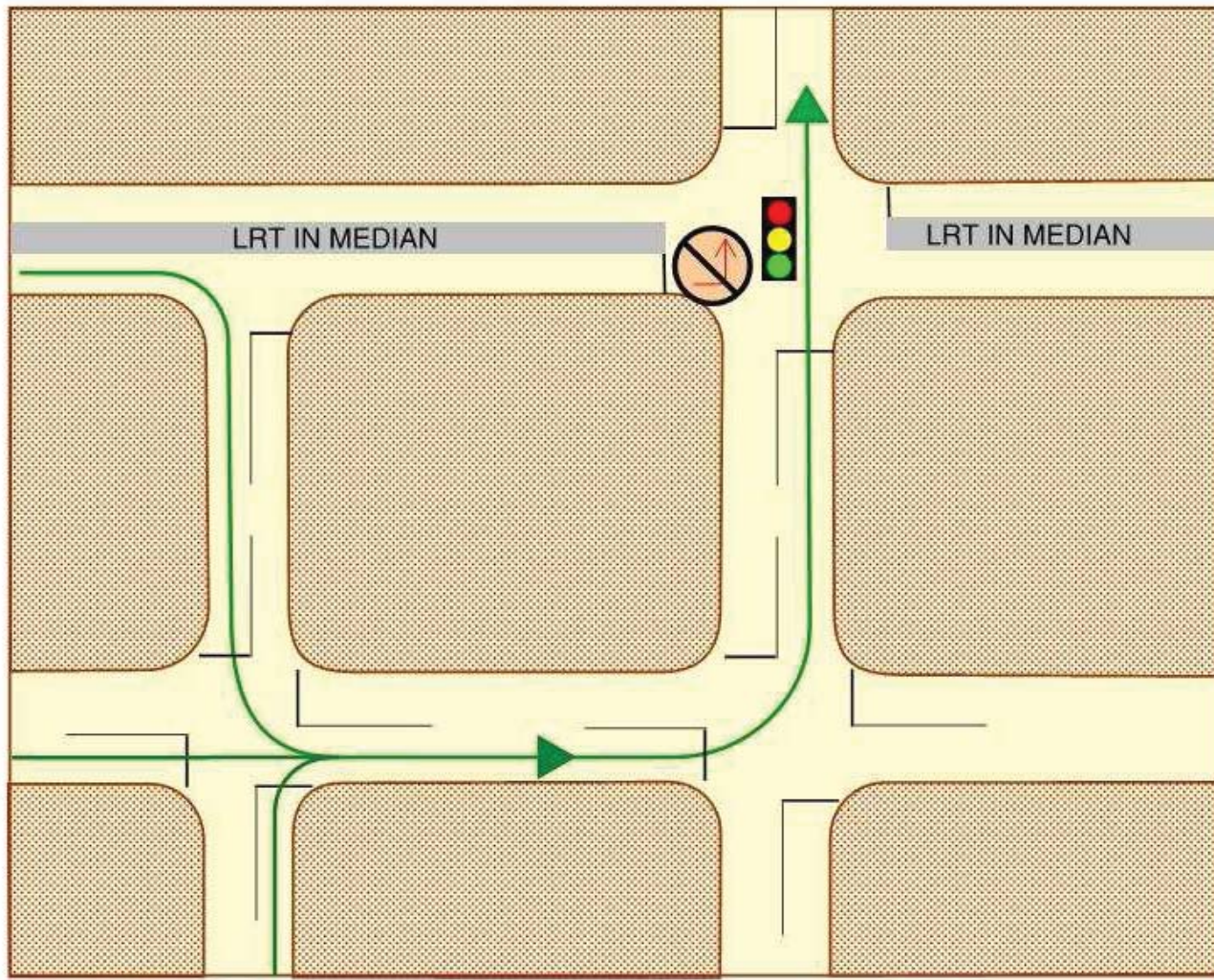
Basic Principles of Neighbourhood Access:

- Turns across LRT tracks will be at signalized intersections
- A supporting street and circulation system will be provided



Neighbourhood Access

www.edmonton.ca/LRTPProjects



JUG-HANDLE ACCESS

- Existing left turn movement at intersection removed
- Future jug-handle movements provided

Neighbourhood Access – Segment A

www.edmonton.ca/LRTPProjects



ALTERNATIVE 1 – Centre Running LRT



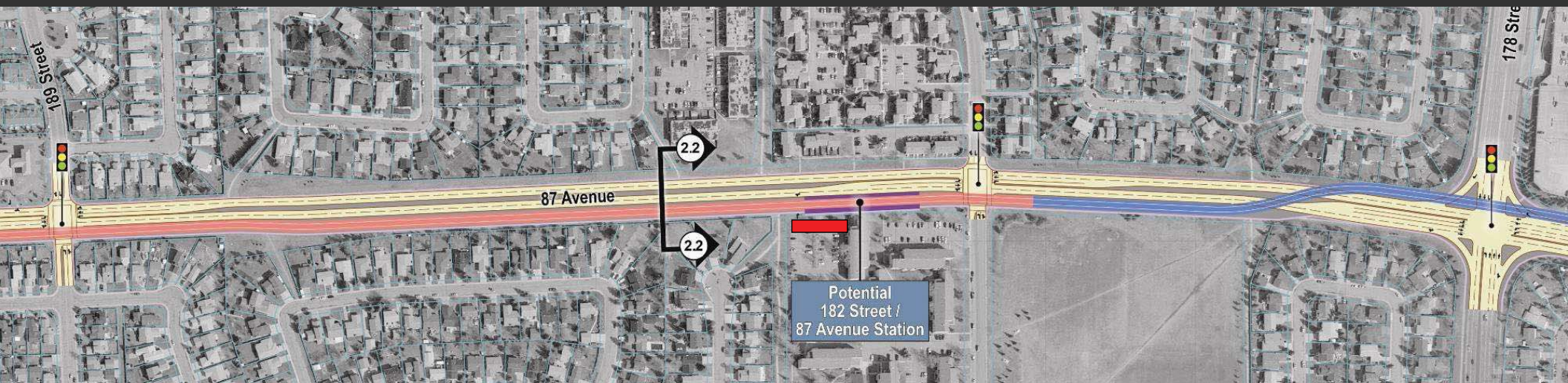
ALTERNATIVE 2 – South Running LRT

Neighbourhood Access – Segment B

www.edmonton.ca/LRTPProjects



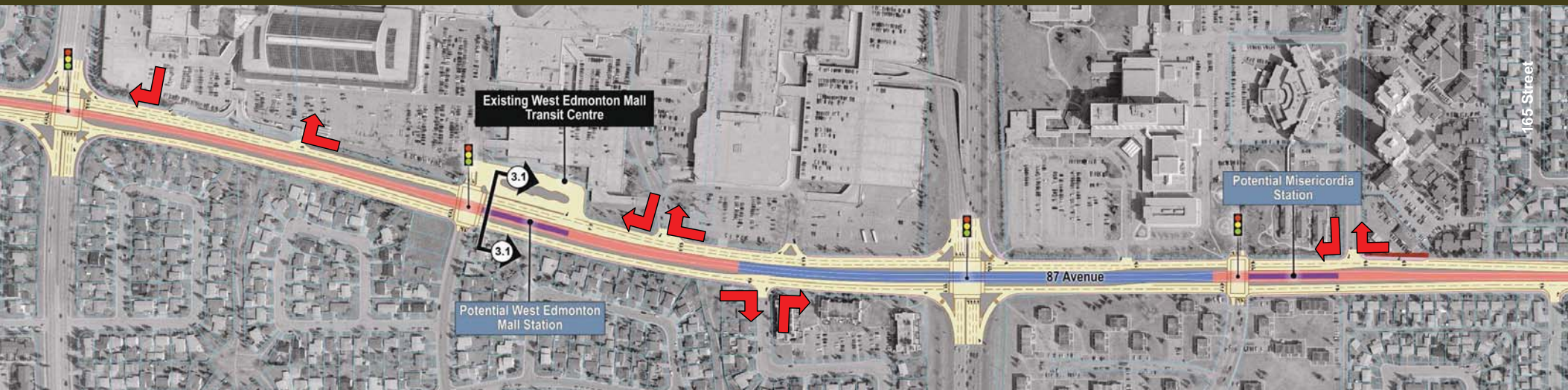
ALTERNATIVE 1 – Centre Running LRT



ALTERNATIVE 2 – South Running LRT

Neighbourhood Access – Segment C

www.edmonton.ca/LRTPProjects



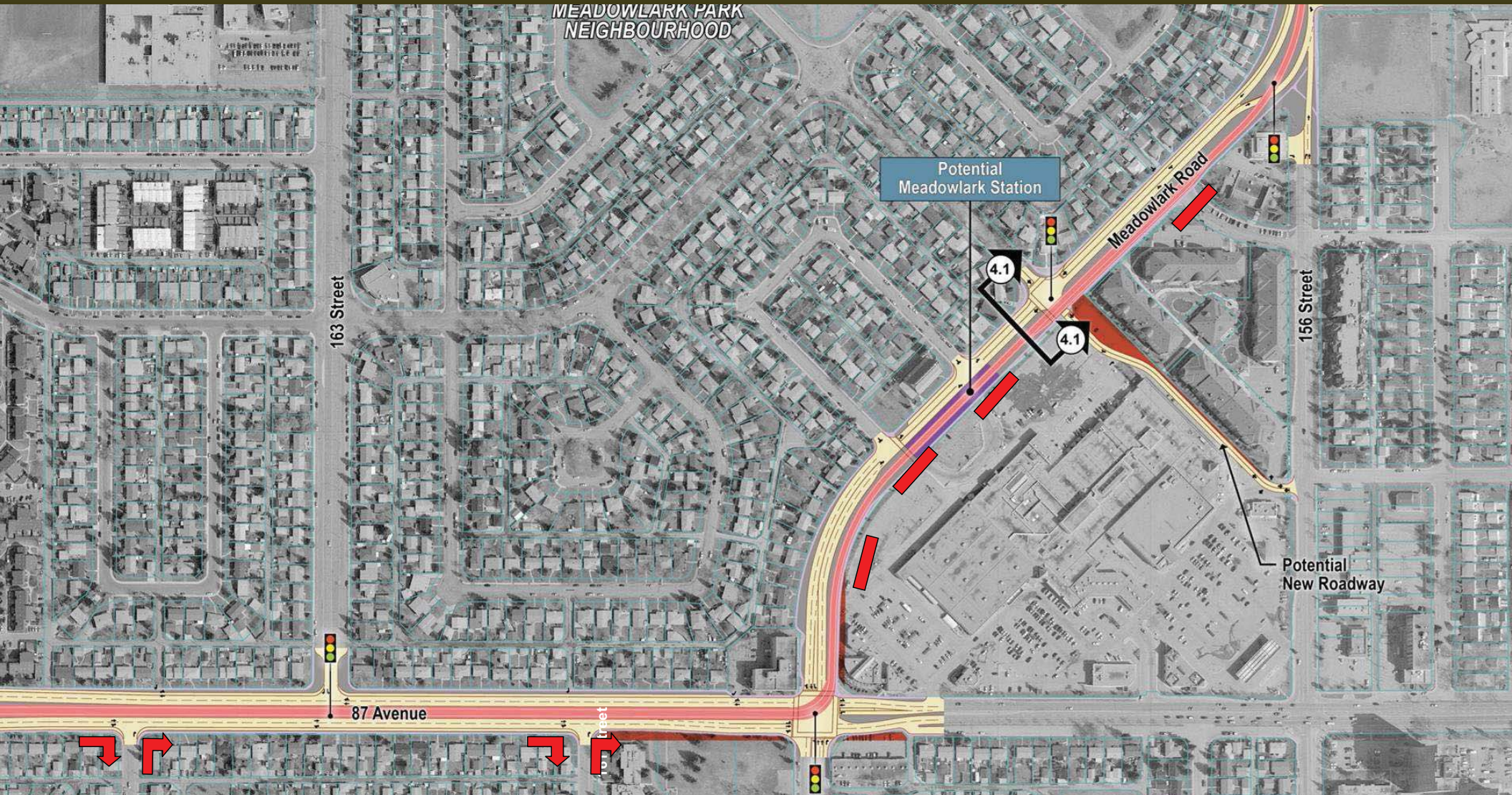
ALTERNATIVE 1 – Centre Running LRT



ALTERNATIVE 2 – North Running LRT

Neighbourhood Access – Segment D

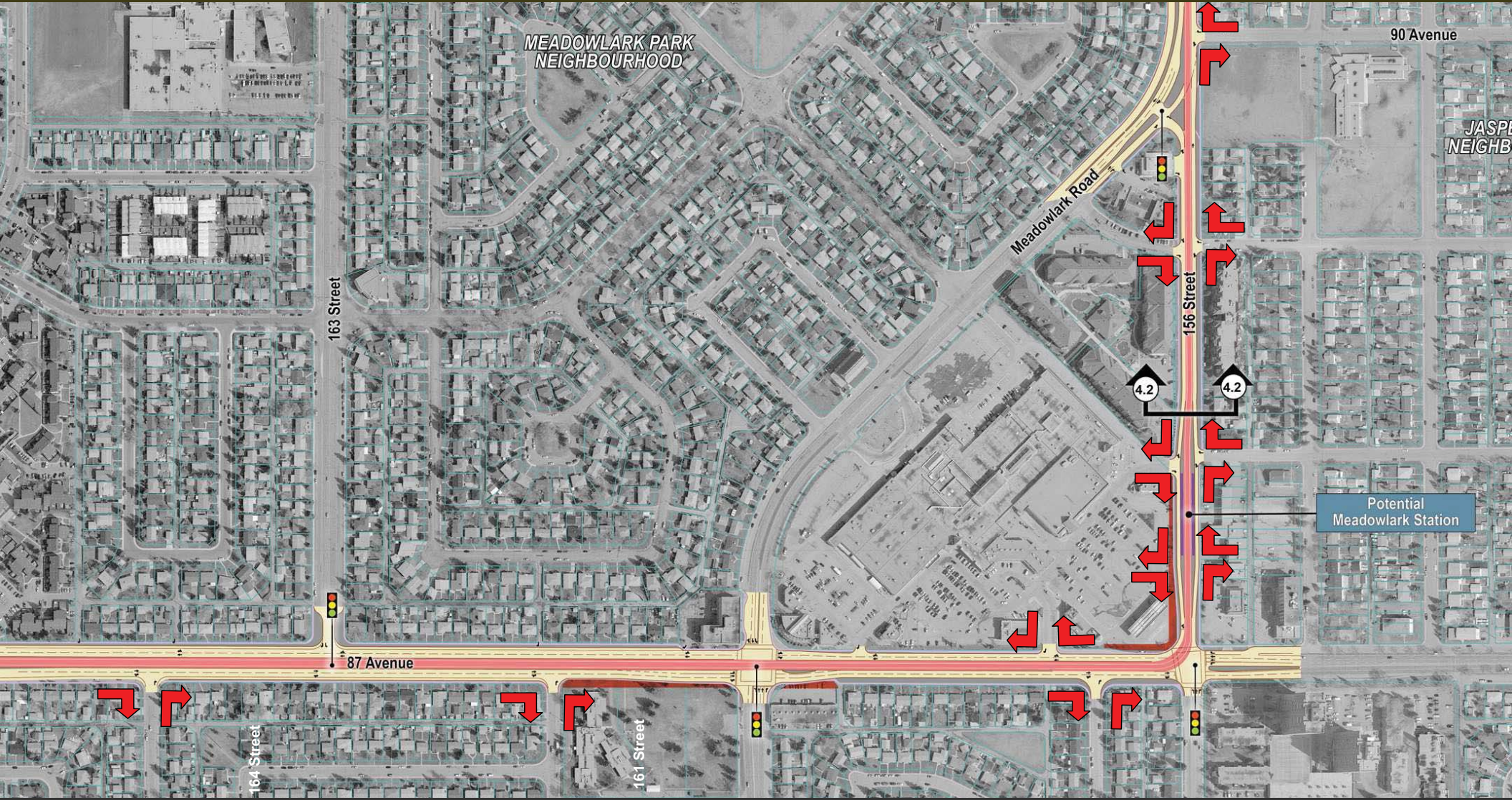
www.edmonton.ca/LRTPProjects



ALTERNATIVE 1 – Meadowlark Road

Neighbourhood Access – Segment D

www.edmonton.ca/LRTPProjects



ALTERNATIVE 2 – 156 Street



Neighbourhood Access - Workshop

www.edmonton.ca/LRTProjects

Workshop #3

- Givens

- Crossing of LRT tracks will be at signalized intersections
- Not ALL signalized intersections will allow left hand turns



Neighbourhood Access – Workshop Questions

www.edmonton.ca/LRTProjects

First comment on your chosen section

– How does the LRT affect the way you get around and in/out of your neighborhood?



Wrap Up

www.edmonton.ca/LRTProjects

- Fill out Questionnaires
- Attend other workshops
- Presentation available on website

www.edmonton.ca/LRT

LRT Workshop Session Schedule

www.edmonton.ca/LRTProjects

West LRT	
May 4, 2010	Lewis Estates to Meadowlark
May 6, 2010	Meadowlark to SPR/142 St.
May 12, 2010	SPR/149 St. to SPR/124 St.
May 13, 2010	Groat Road to Downtown

Southeast LRT	
May 18, 2010	Downtown to 95 Ave/83 St
May 19, 2010	Strathearn to Whyte Ave
May 20, 2010	Wagner Industrial Area
May 26, 2010	Bonnie Doon to Wagner
May 27, 2010	Wagner to Mill Woods

www.edmonton.ca/LRTProjects

Next Steps

www.edmonton.ca/LRTProjects

