



West LRT Workshop Session

www.edmonton.ca/LRTProjects

Welcome

Meadowlark to Stony Plain Road/142 Street

May 6, 2010

CH2MHILL

THE CITY OF
Edmonton



Tonight's Meeting Purpose

www.edmonton.ca/LRTProjects

- To provide more detailed information on West LRT concept engineering
- To provide specific detail on alignment alternatives for the Meadowlark Mall to Stony Plain Road/142 Street segment
- To collect comments from participants



LRT Workshop Session Schedule

www.edmonton.ca/LRTProjects

West LRT	
May 4, 2010	Lewis Estates to Meadowlark
May 6, 2010	Meadowlark to SPR/142 St.
May 12, 2010	SPR/149 St. to SPR/124 St.
May 13, 2010	Groat Road to Downtown

Southeast LRT	
May 18, 2010	Downtown to 95 Ave/83 St
May 19, 2010	Strathearn to Whyte Ave
May 26, 2010	Bonnie Doon to Wagner
May 27, 2010	Wagner to Mill Woods

www.edmonton.ca/LRTProjects



Proposed Agenda

www.edmonton.ca/LRTProjects

- Welcome and Introductions
- Project Background
- Session #1: Right-of-way Alignment
- Session #2: Station Location and Configuration
- Session #3: Neighbourhood and Business Access
- Conclusion



West LRT

Meadowlark to Stony Plain Road / 142 Street

www.edmonton.ca/LRTProjects

Project Background



Where we are in the process?

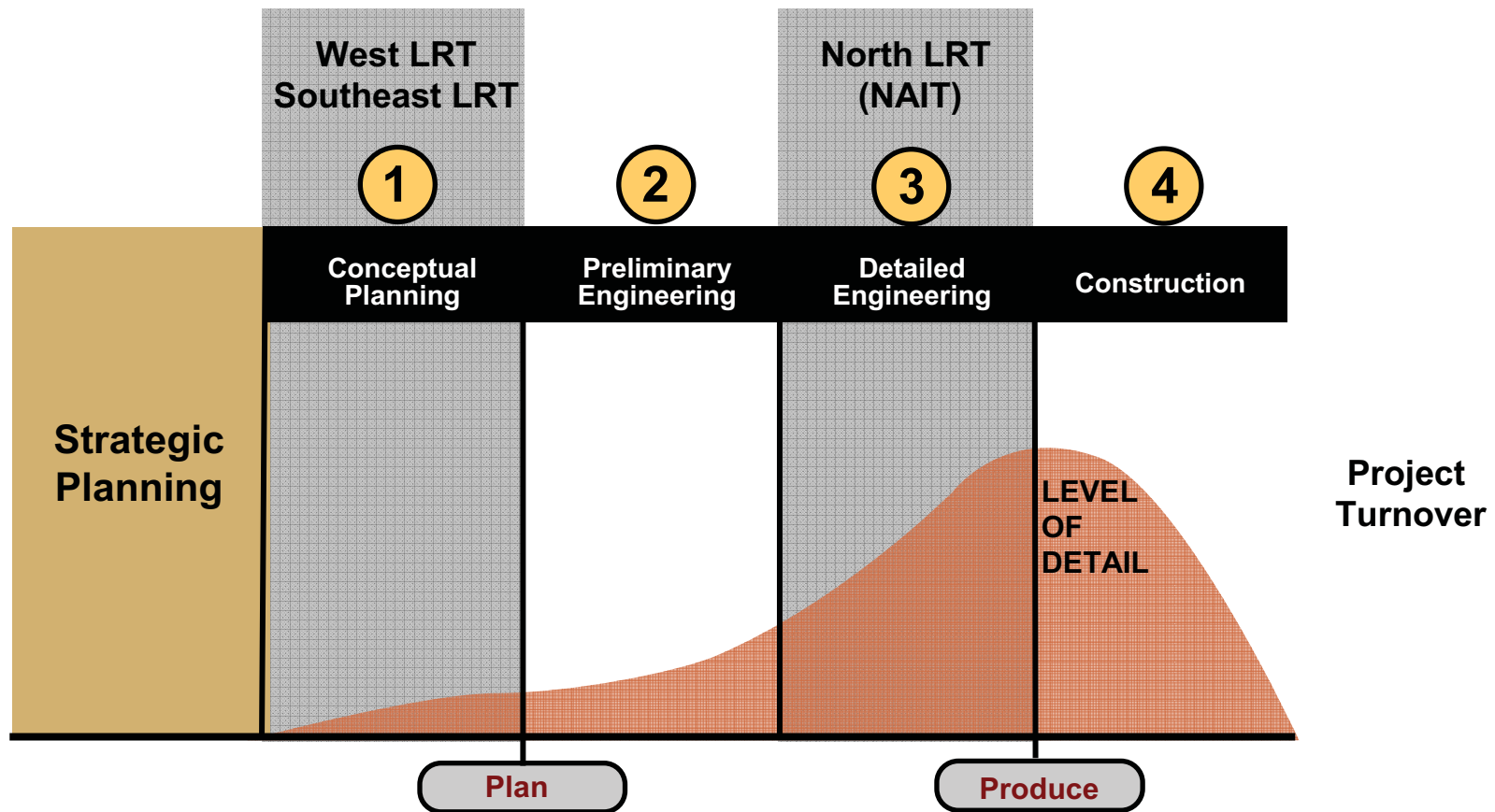
www.edmonton.ca/LRTProjects

Council approvals to date:

- LRT Network Plan (*June 2009*)
- Southeast LRT Corridor (*December 2009*)
- West LRT Corridor (*December 2009*)

Where we are in the process?

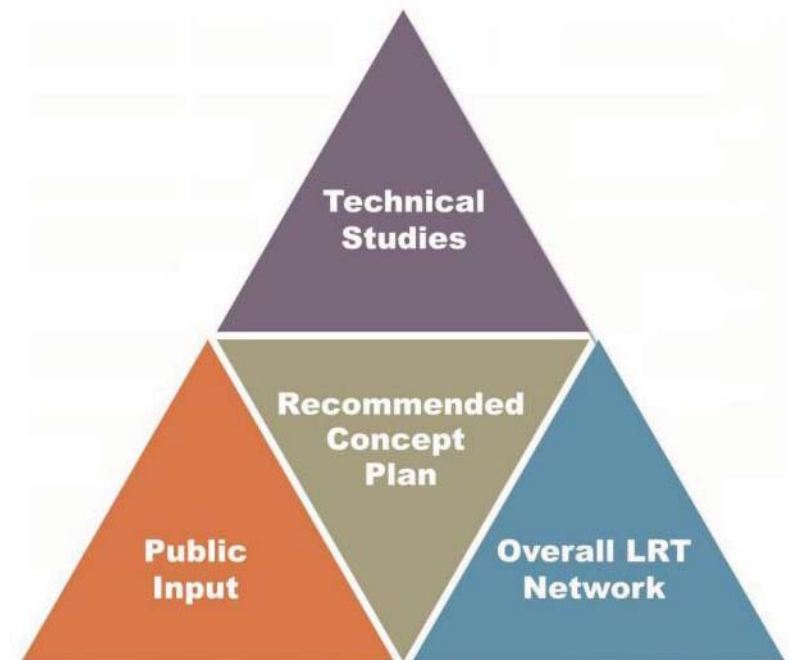
www.edmonton.ca/LRTProjects



Where we are in the process today?

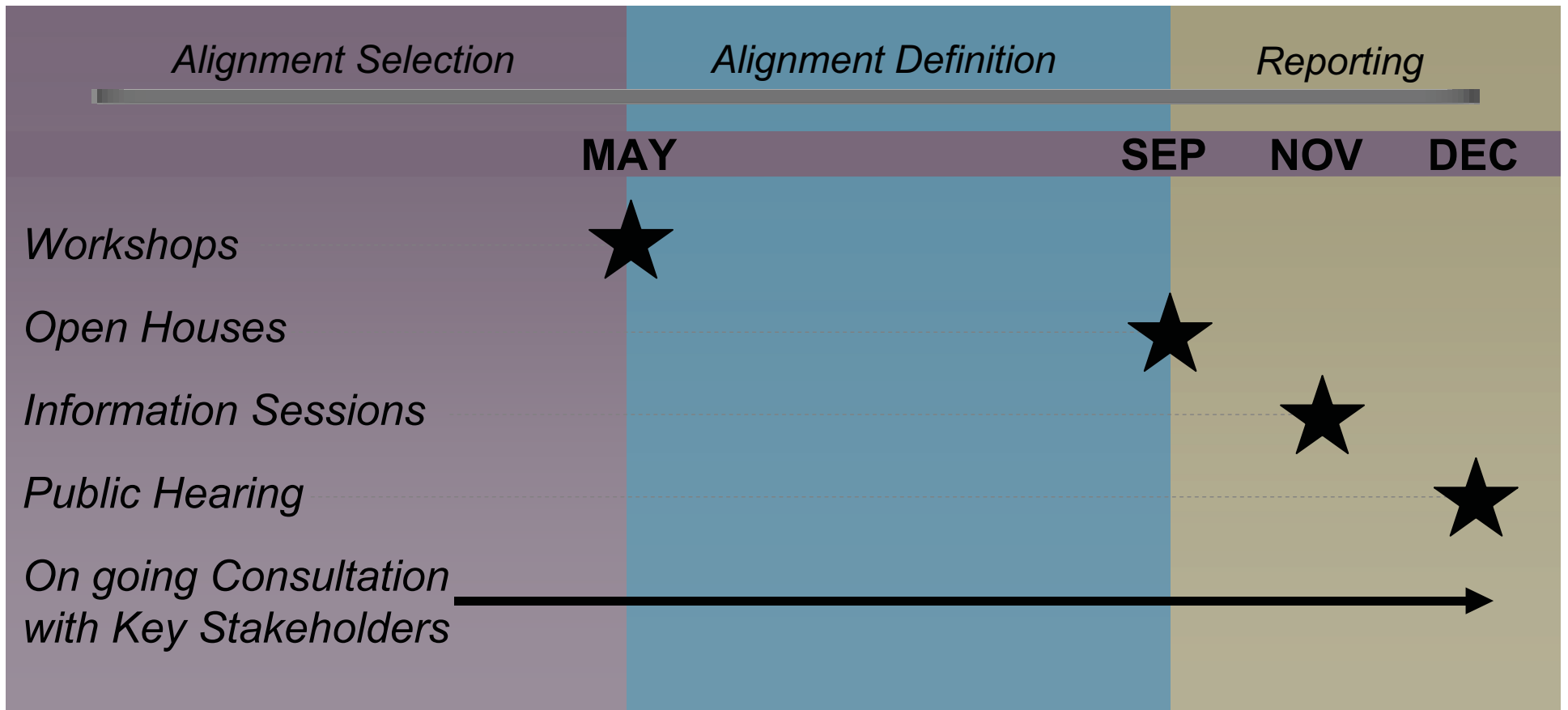
www.edmonton.ca/LRTProjects

- Presenting information (givens):
 - Grade Separations
 - Noise Study
 - Roadway Network
 - Safety
- Collecting participant comment/input (testing ideas):
 - Right-of-Way Alignment
 - Station Location
 - Neighbourhood and Business Access



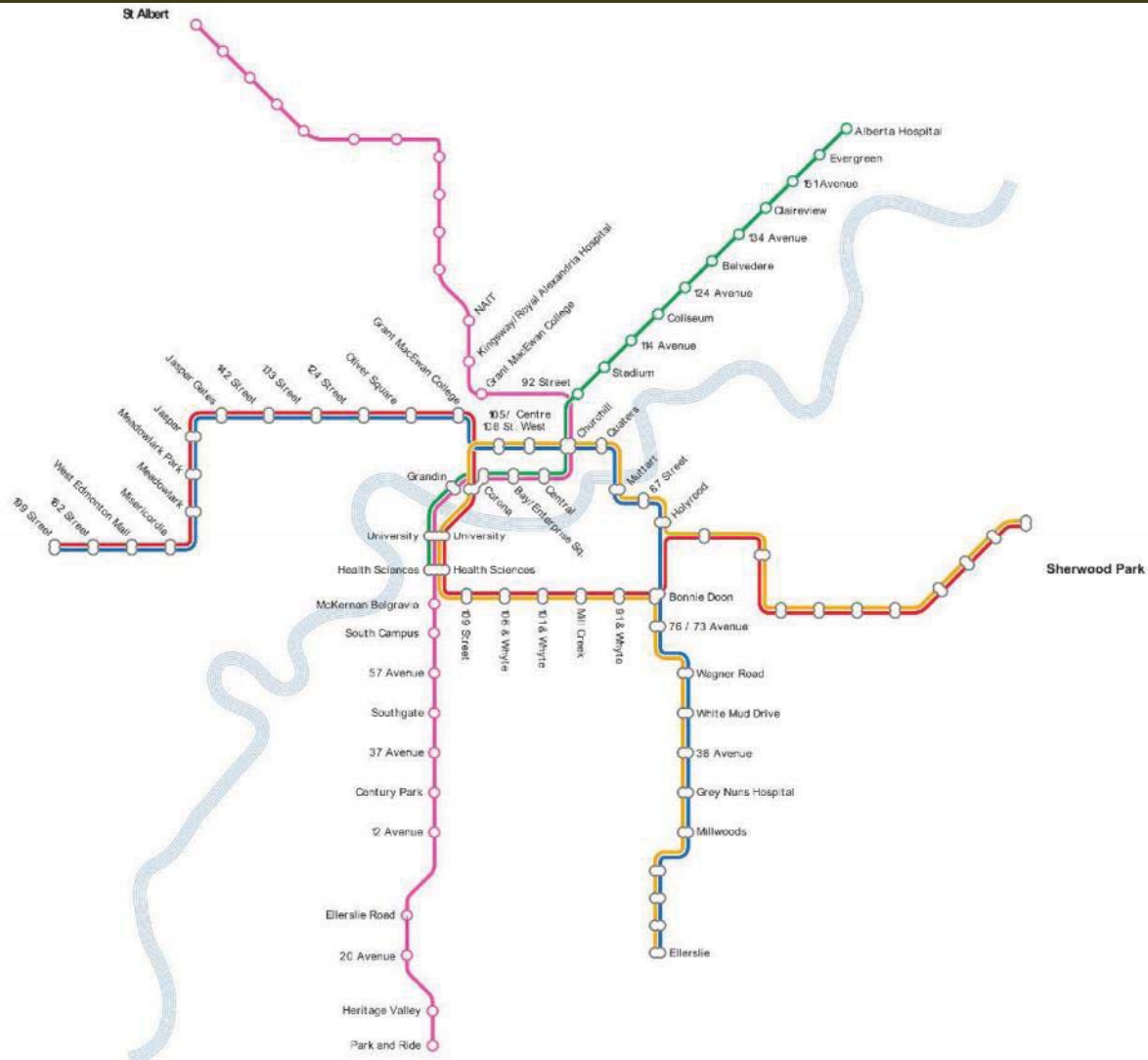
Where are we going?

www.edmonton.ca/LRTProjects



LRT Network

www.edmonton.ca/LRTProjects



Urban Style LRT

www.edmonton.ca/LRTProjects

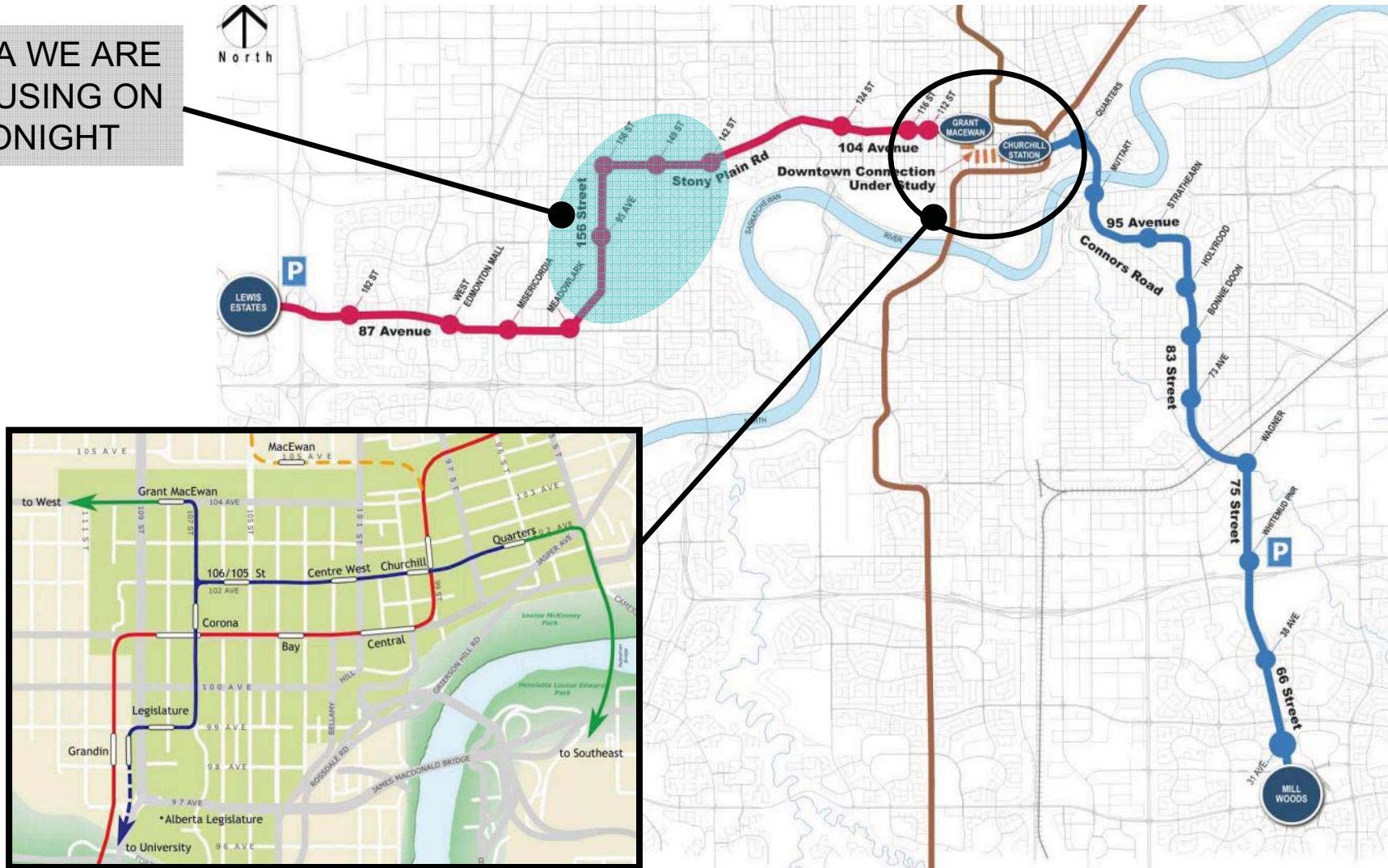


CH2MHILL

Southeast and West LRT Corridors

www.edmonton.ca/LRTProjects

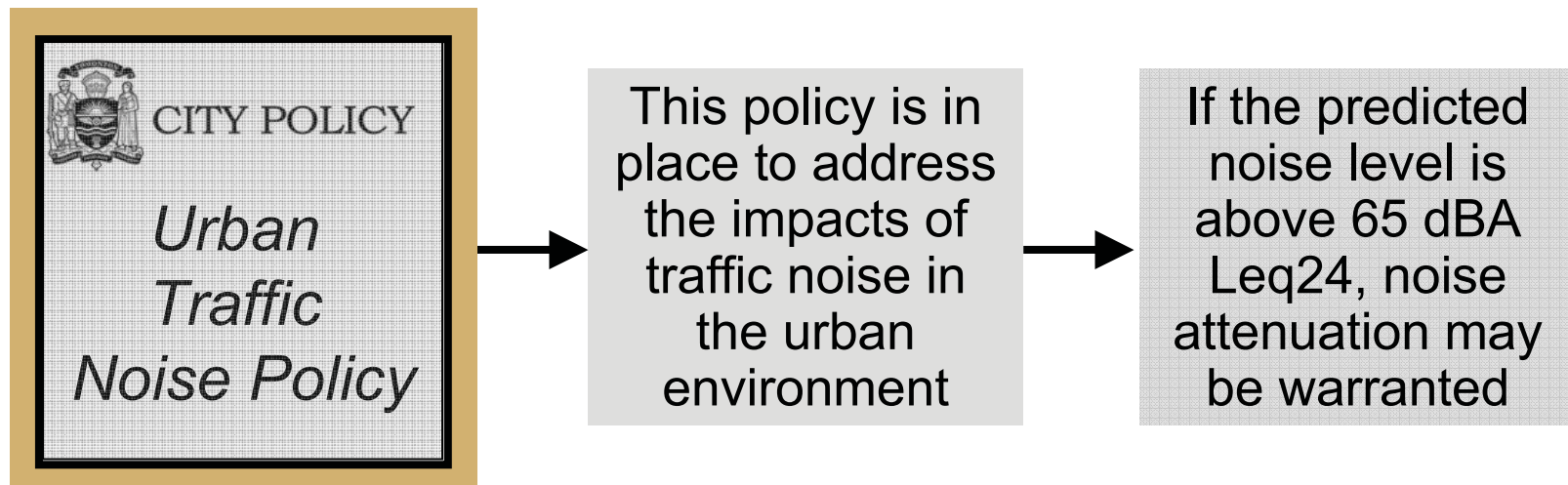
AREA WE ARE FOCUSING ON TONIGHT



LRT Noise Impact

www.edmonton.ca/LRTProjects

- LRT Noise Impact Study under way



Roadway Network

www.edmonton.ca/LRTPProjects

- Removing 2 existing travel lanes along 156 Street and Stony Plain Road
- Reviewing key intersections



Stony Plain Road / 149 Street



156 Street / Stony Plain Road



Stony Plain Road / 142 Street

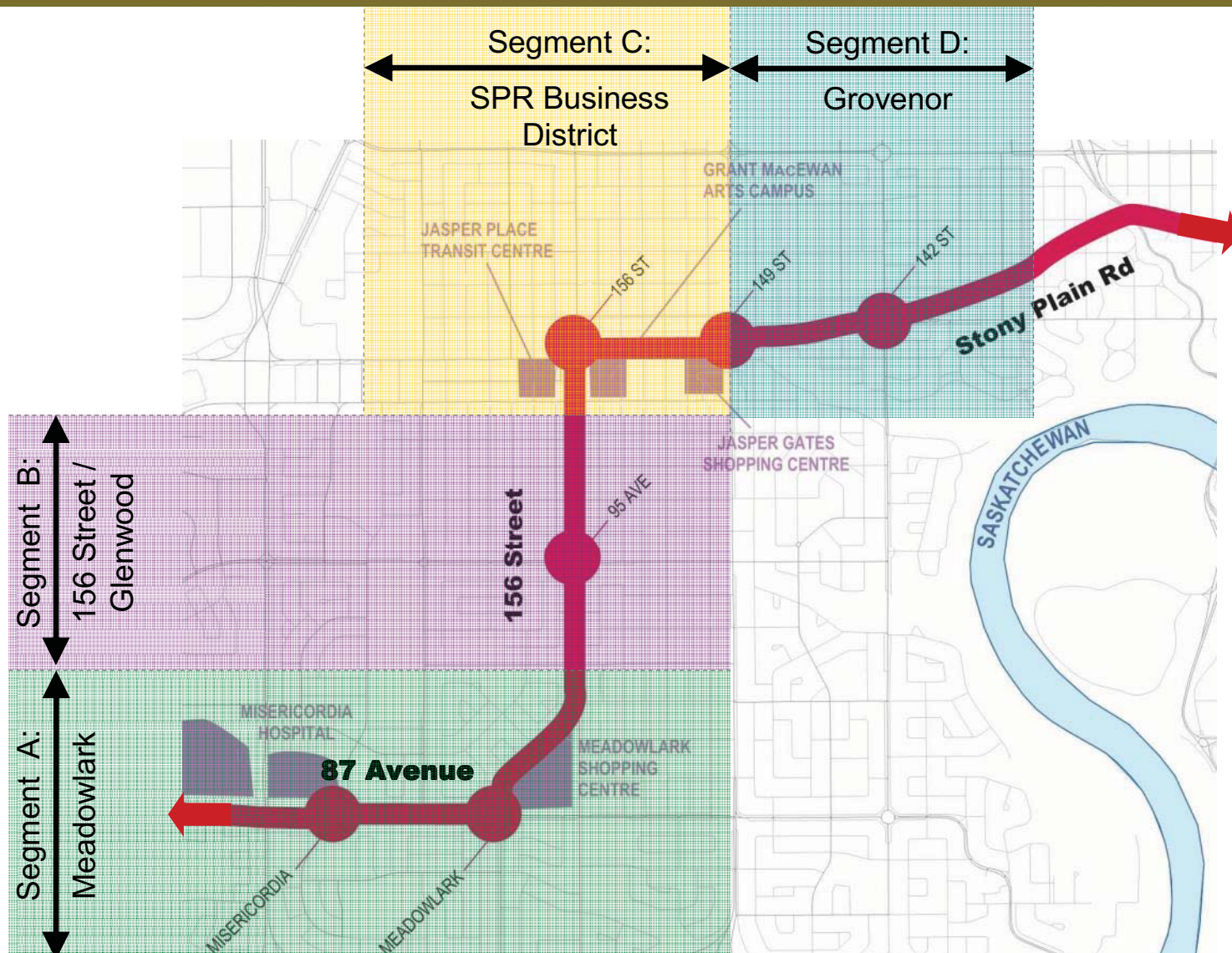


Workshop Session Overview

www.edmonton.ca/LRTProjects

- Session #1:
 - Right-of-way Alignment
- Session #2:
 - Station Location
- Session #3:
 - Neighbourhood and Business Access

Neighbourhood Groupings





West LRT

Meadowlark to Stony Plain Road / 142 Street

www.edmonton.ca/LRTProjects

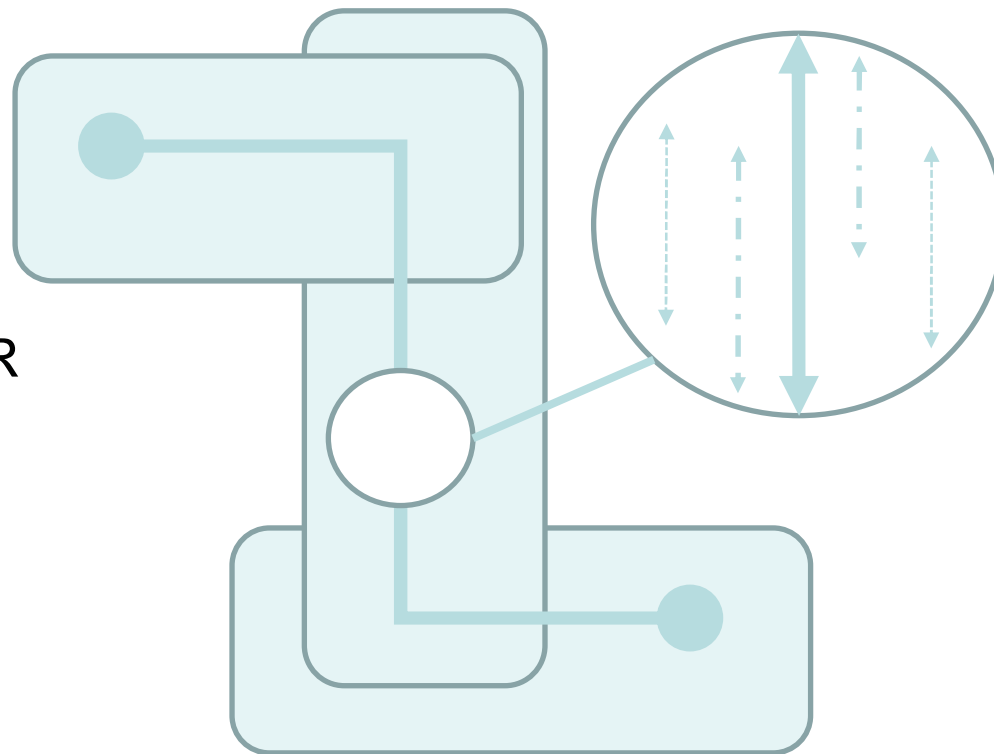
Session #1

Right-of-Way (ROW) Alignment Alternatives

Corridor vs. Alignment

www.edmonton.ca/LRTProjects

CORRIDOR



ALIGNMENT

Right-of-Way

www.edmonton.ca/LRTPProjects

- There are impacts
- Constrained Right-of-Way
- Minimize property requirements by removing:
 - service roads
 - traffic lanes
 - on-street parking





ROW Alignment Options

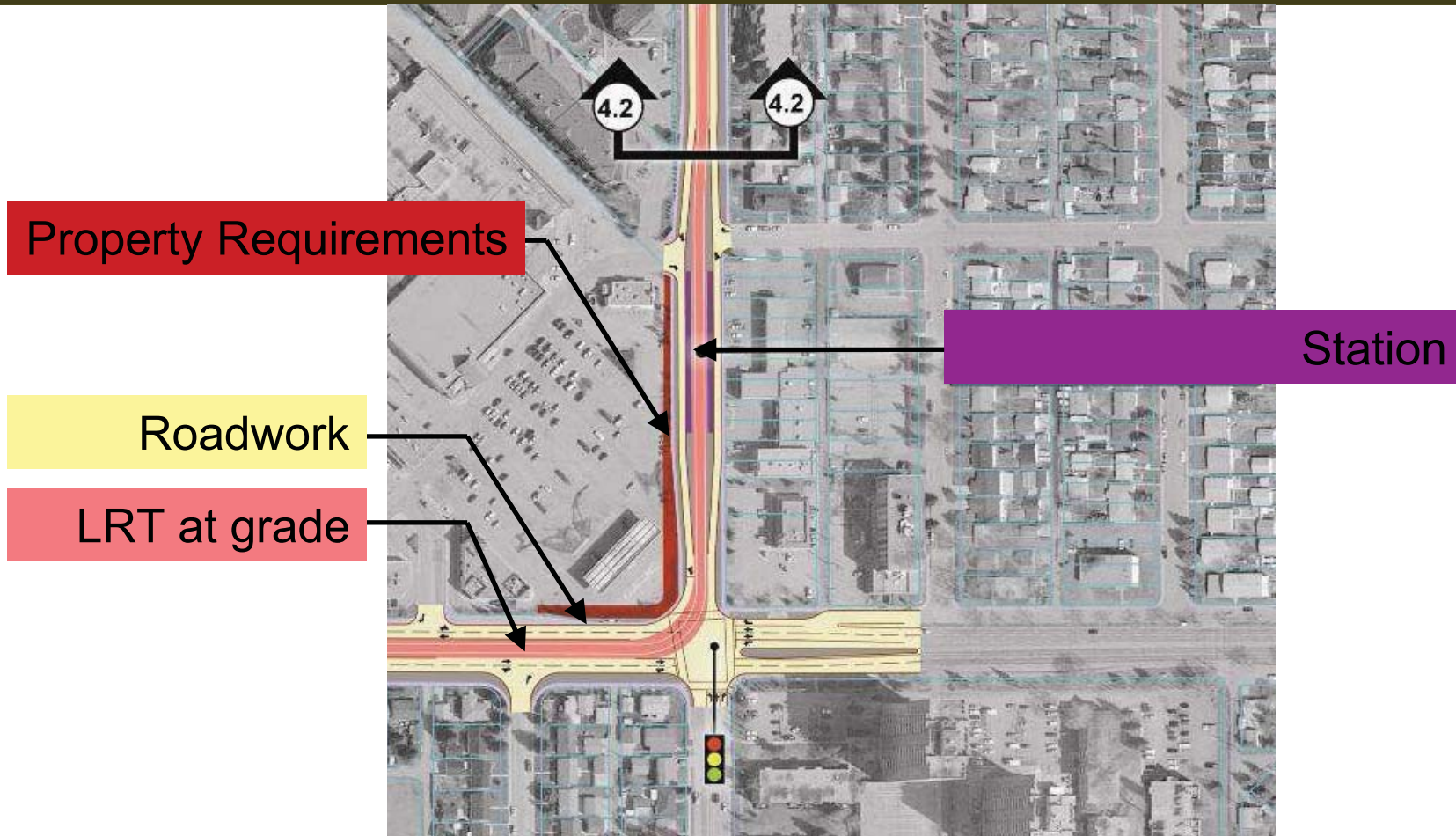
www.edmonton.ca/LRTPProjects

Comment on your chosen section

– *What needs to be considered for each alternative?*

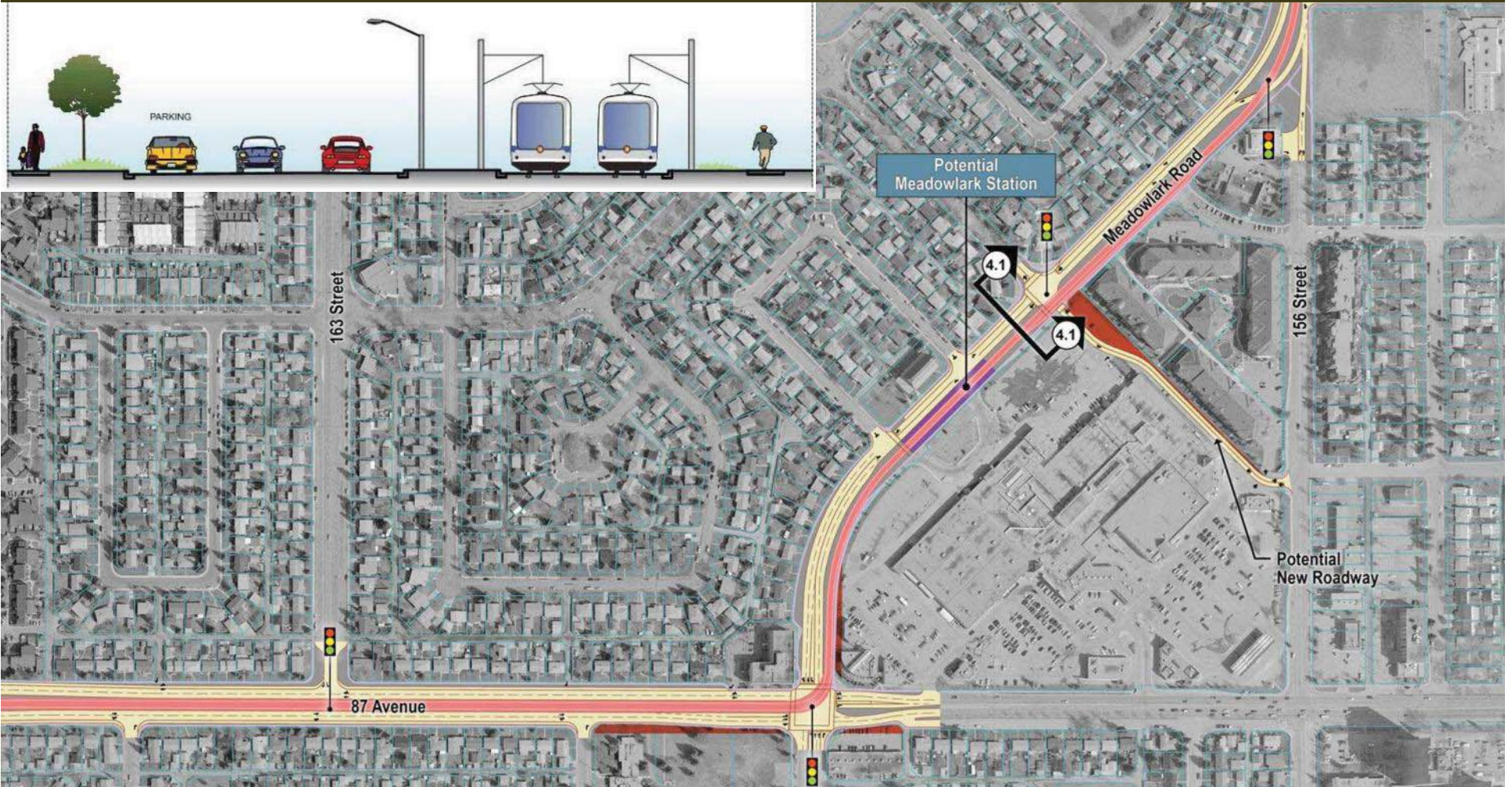
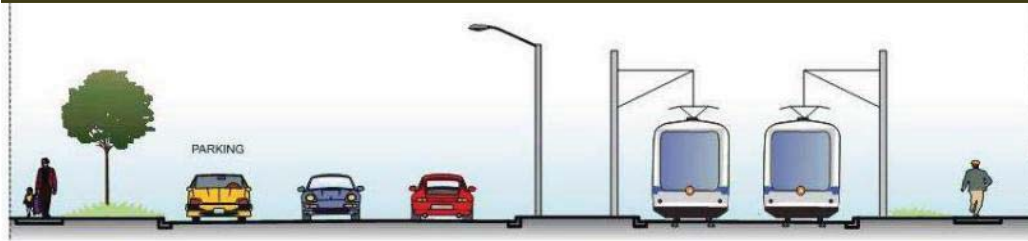
Legend

www.edmonton.ca/LRTProjects



ROW Alignment - Segment D

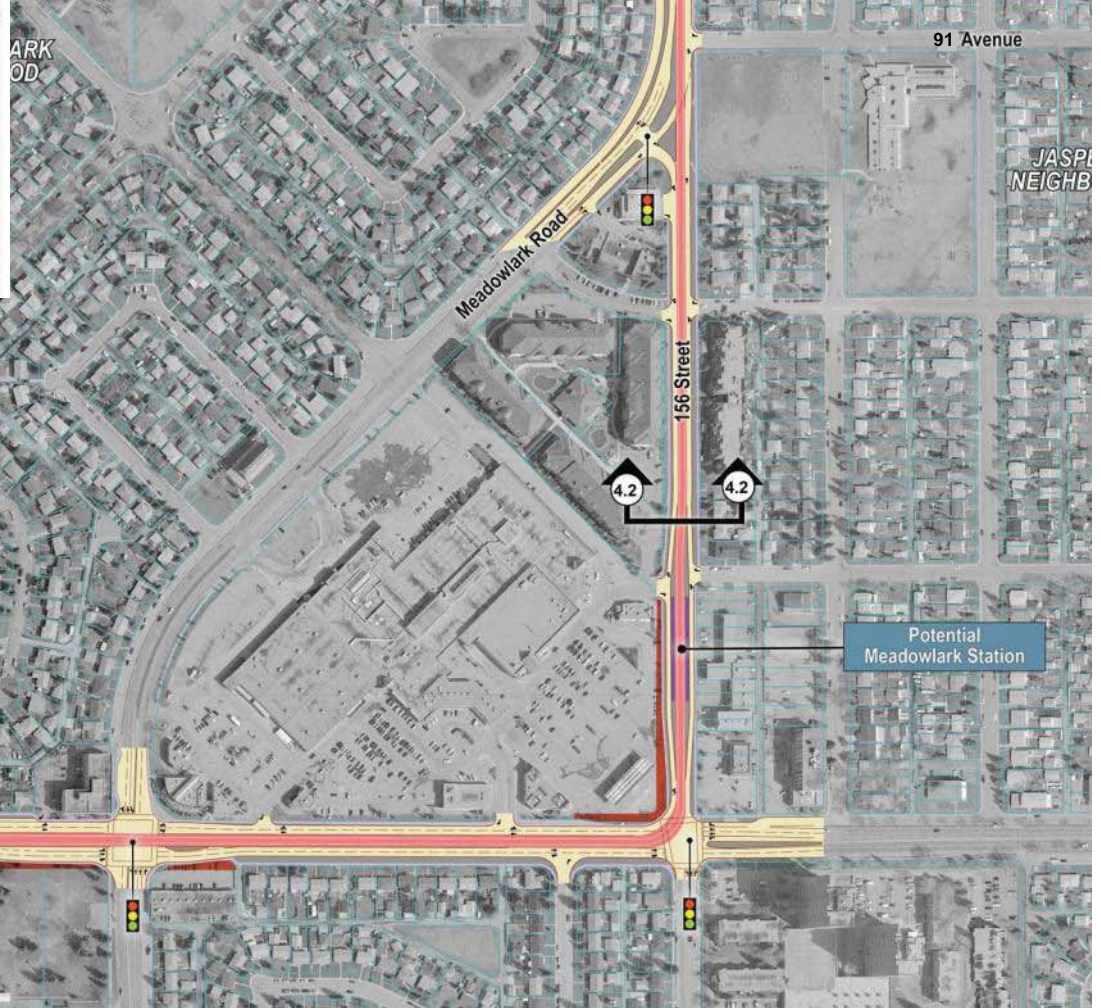
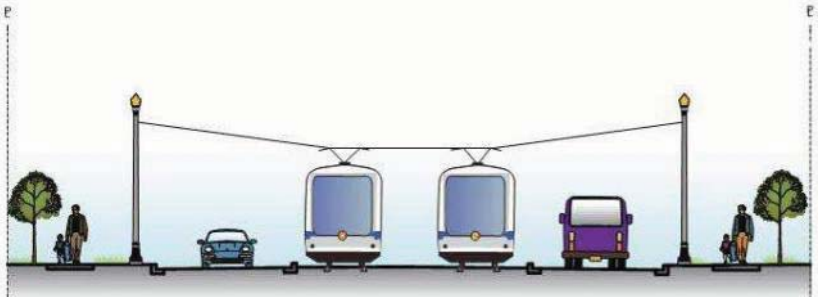
www.edmonton.ca/LRTPProjects



ALTERNATIVE 1 – Meadowlark Road

ROW Alignment - Segment D

www.edmonton.ca/LRTPProjects



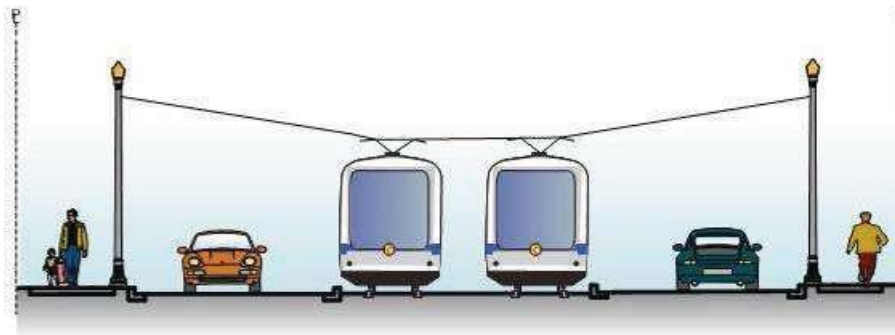
ALTERNATIVE 2 – 156 Street

ROW Alignment - Segment B

www.edmonton.ca/LRTProjects



156 Street

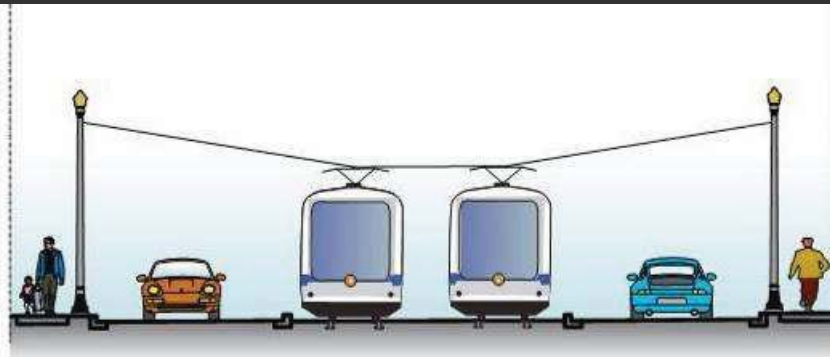


ROW Alignment - Segment C

www.edmonton.ca/LRTPProjects



ALTERNATIVE 1 – Centre Running LRT

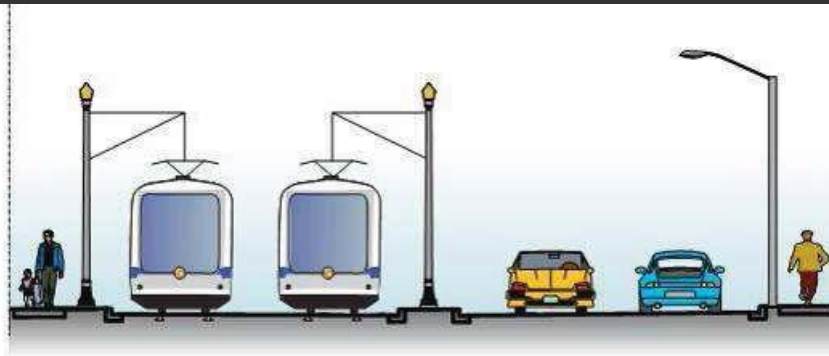


ROW Alignment - Segment C

www.edmonton.ca/LRTPProjects



ALTERNATIVE 2 – North Running LRT



ROW Alignment - Segment C

www.edmonton.ca/LRTPProjects

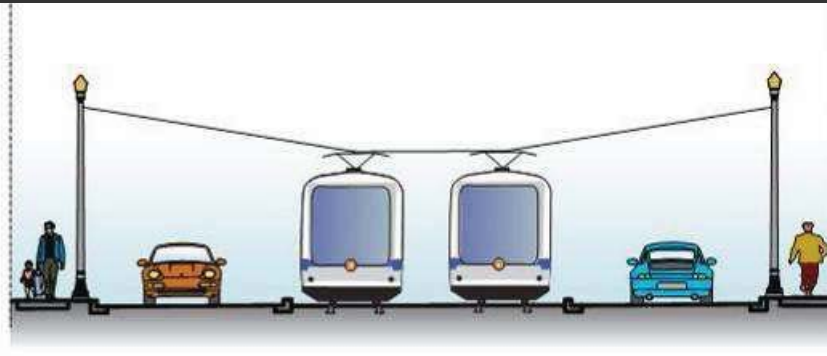


ROW Alignment - Segment D

www.edmonton.ca/LRTProjects



ALTERNATIVE 1 – Centre Running LRT – 2 traffic lanes



ROW Alignment - Segment D

www.edmonton.ca/LRTProjects



ALTERNATIVE 2 – Centre Running LRT – 4 traffic lanes

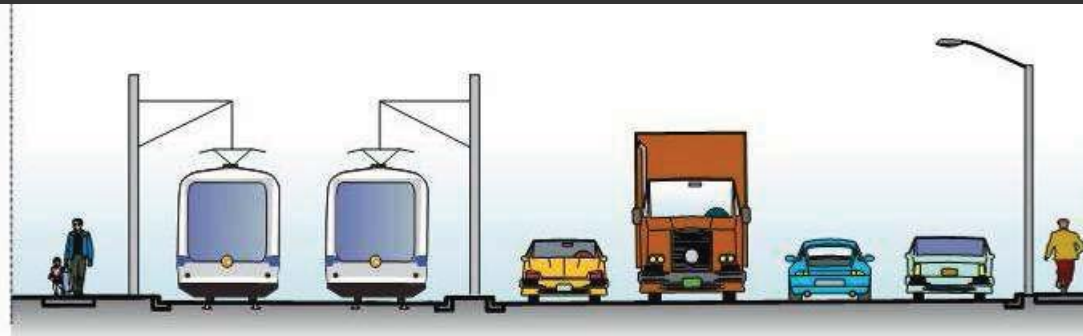


ROW Alignment - Segment D

www.edmonton.ca/LRTPProjects



ALTERNATIVE 3 – North Running LRT – 3 or 4 traffic lanes





ROW Alignment – Workshop Question

www.edmonton.ca/LRTPProjects

Comment on your chosen section

Given that the corridor has been defined and that we are only talking about the ROW alignment alternatives,

– What needs to be considered for each alternative?



West LRT

Meadowlark to Stony Plain Road / 142 Street

www.edmonton.ca/LRTProjects

Session #2

Station Location and Configuration



Station Location and Configuration Options

www.edmonton.ca/LRTProjects

Comment on your chosen section

– How does this station fit into your neighbourhood?

*How does it affect your travel patterns?
(pedestrian, cyclist, or driver)*

Simple Stop Design

www.edmonton.ca/LRTPProjects

Low floor vehicles and platforms provide:

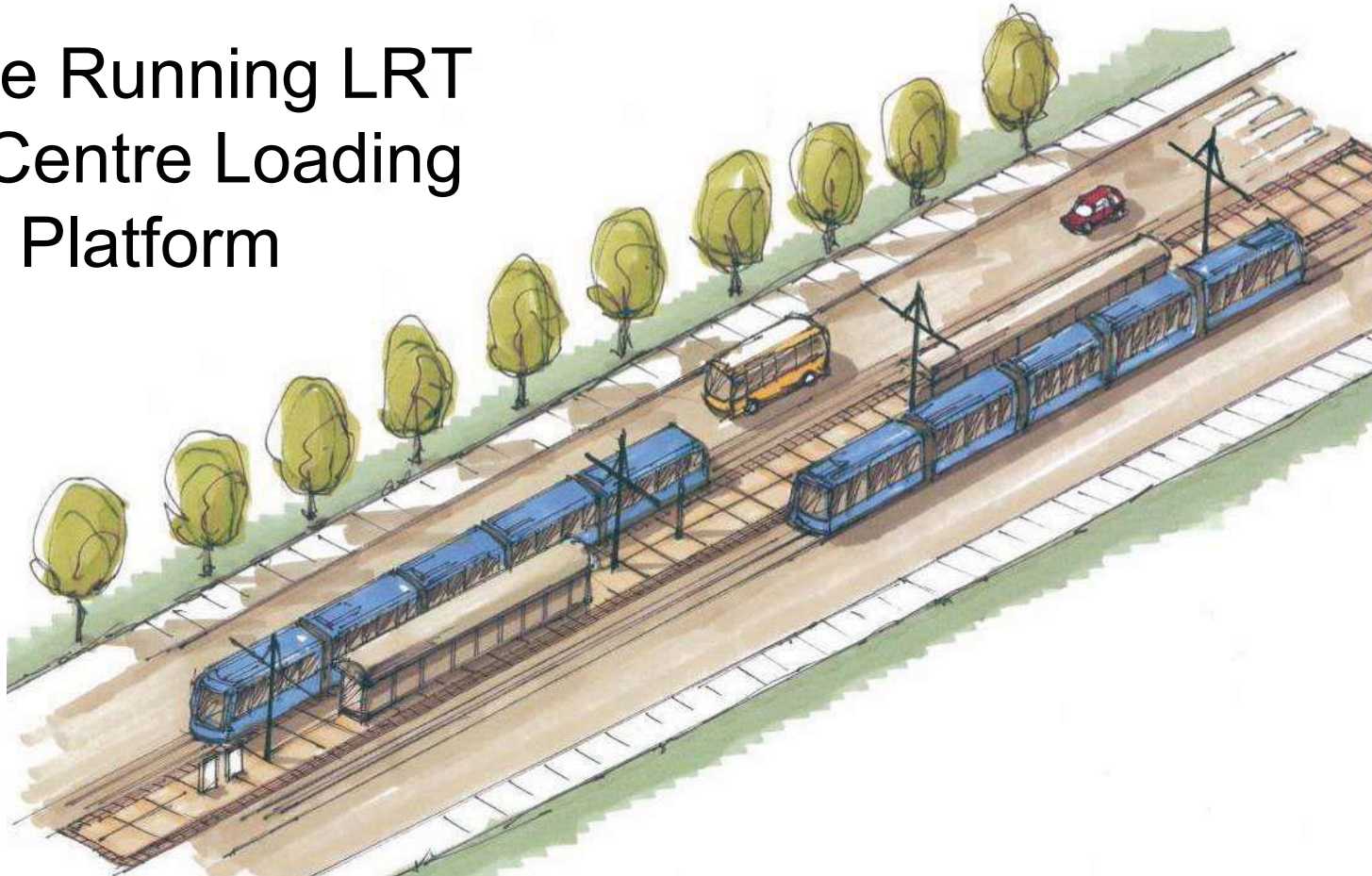
- Simple Infrastructure
- Fits into surrounding areas
- Improved neighbourhood connections



Station Configuration

www.edmonton.ca/LRTProjects

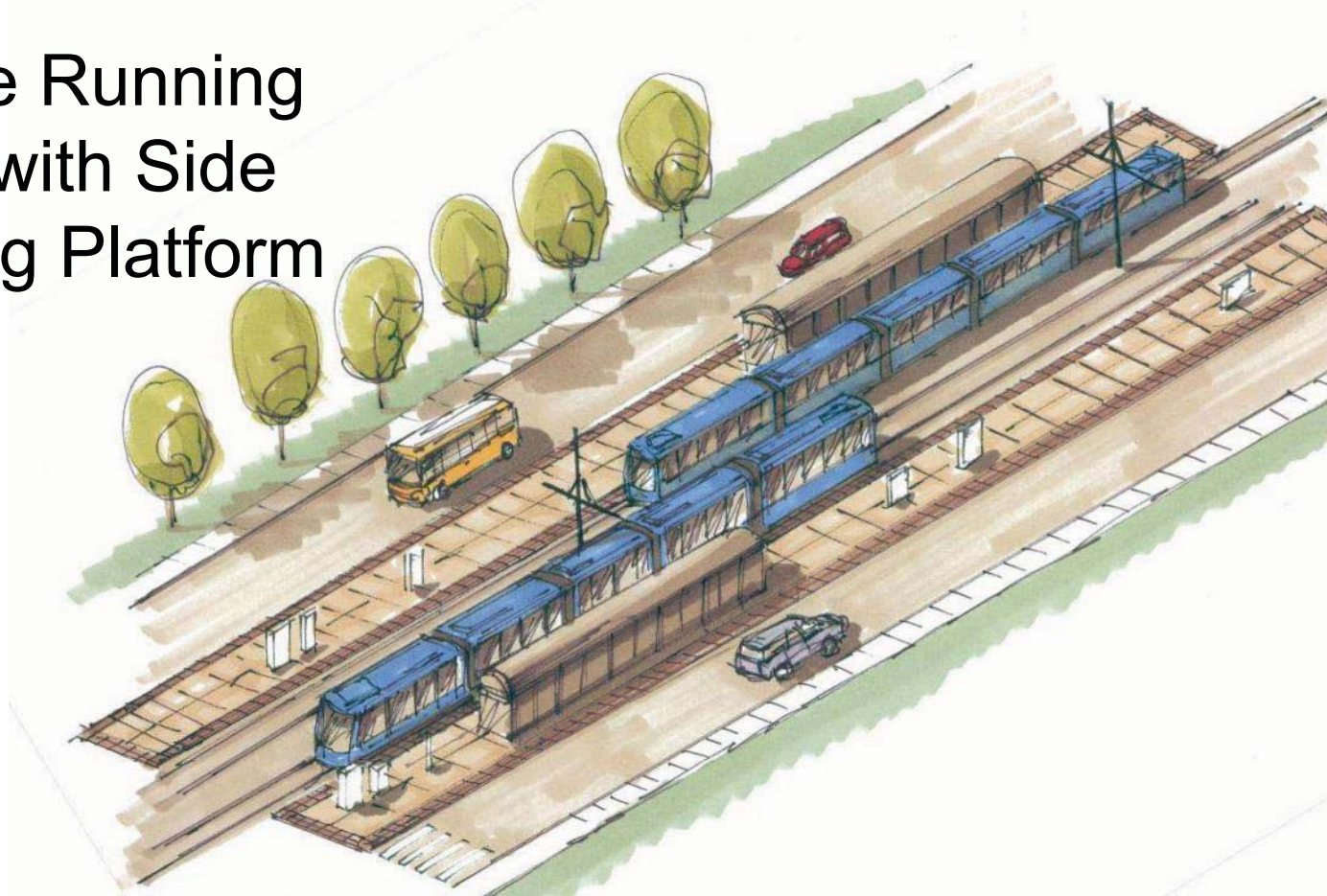
Centre Running LRT
with Centre Loading
Platform



Station Configuration

www.edmonton.ca/LRTProjects

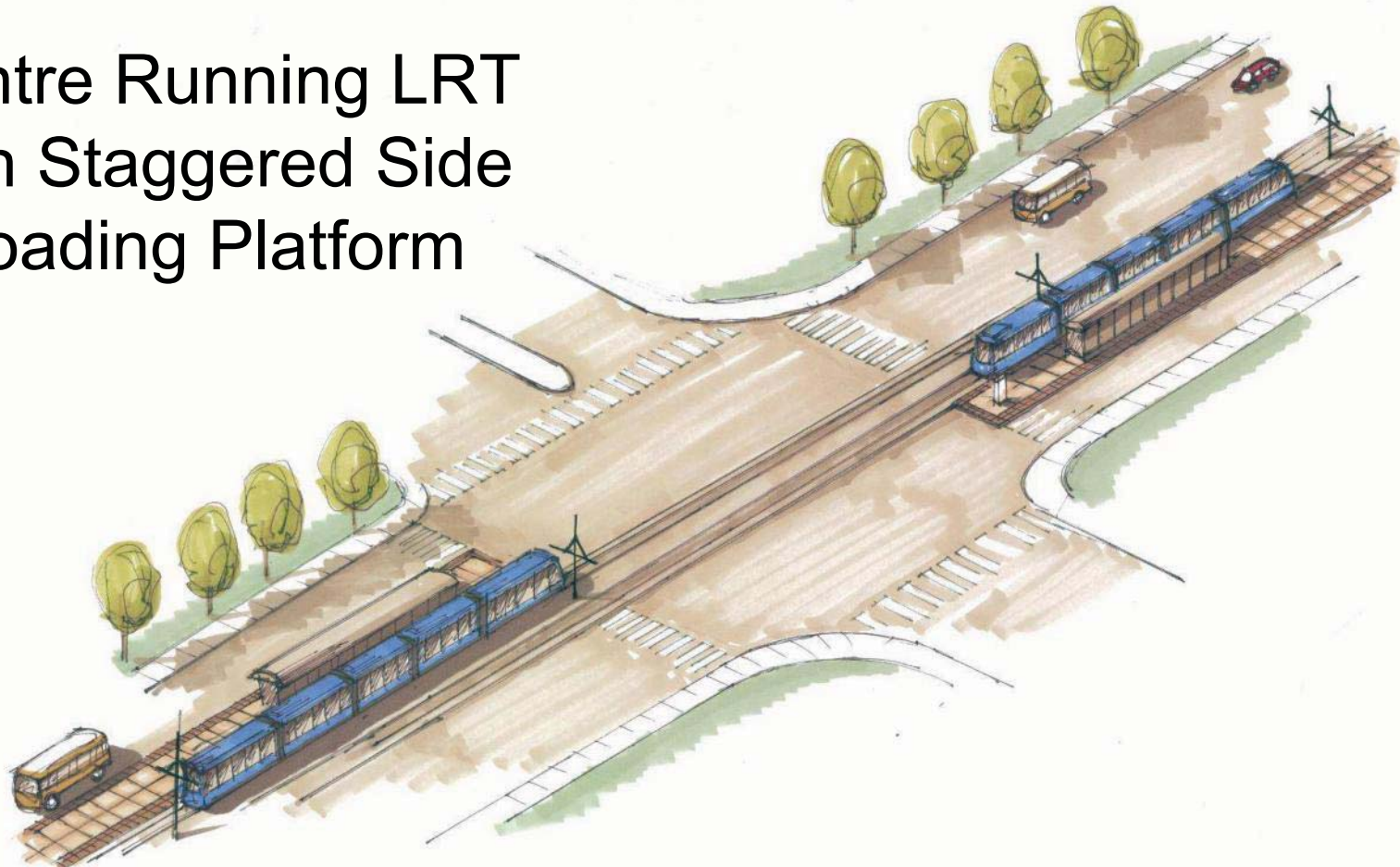
Centre Running
LRT with Side
Loading Platform



Station Configuration

www.edmonton.ca/LRTPProjects

Centre Running LRT
with Staggered Side
Loading Platform





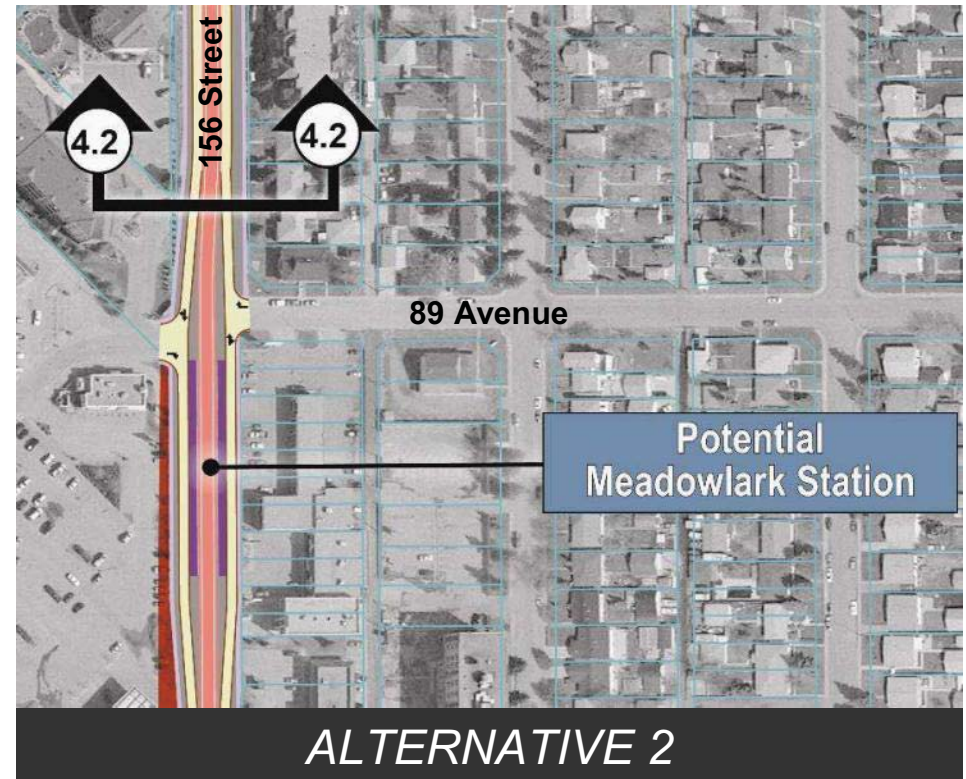
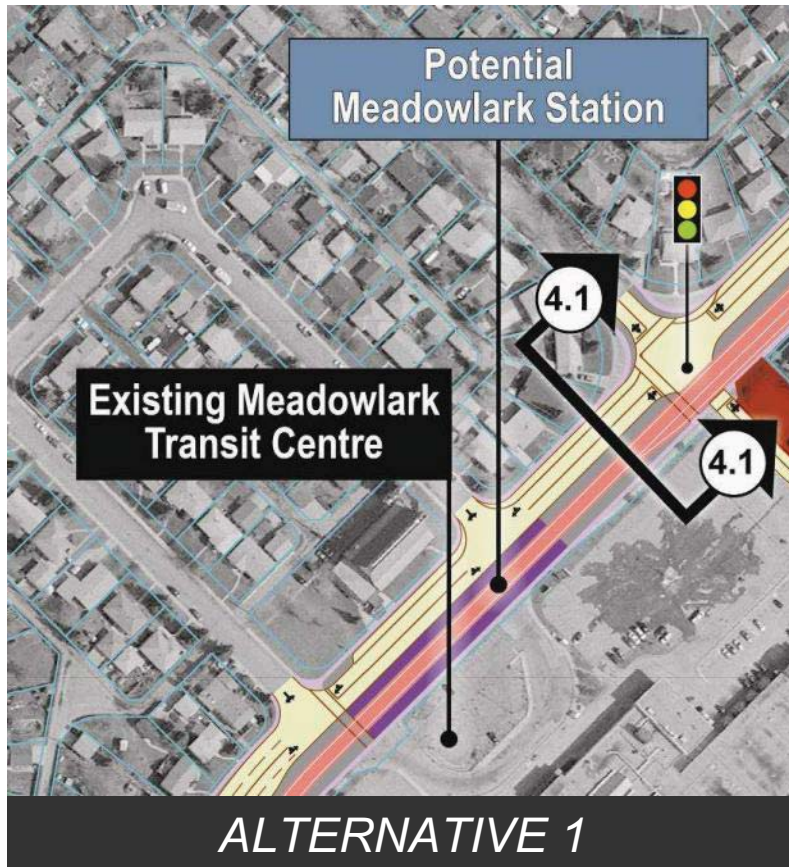
Overview Station Alternatives

www.edmonton.ca/LRTProjects

- Overview of station alternatives at:
 - Meadowlark Station
 - 95 Avenue/156 Street Station
 - Jasper Place Station
 - Stony Plain Road/149 Street Station
 - Stony Plain Road/142 Street Station

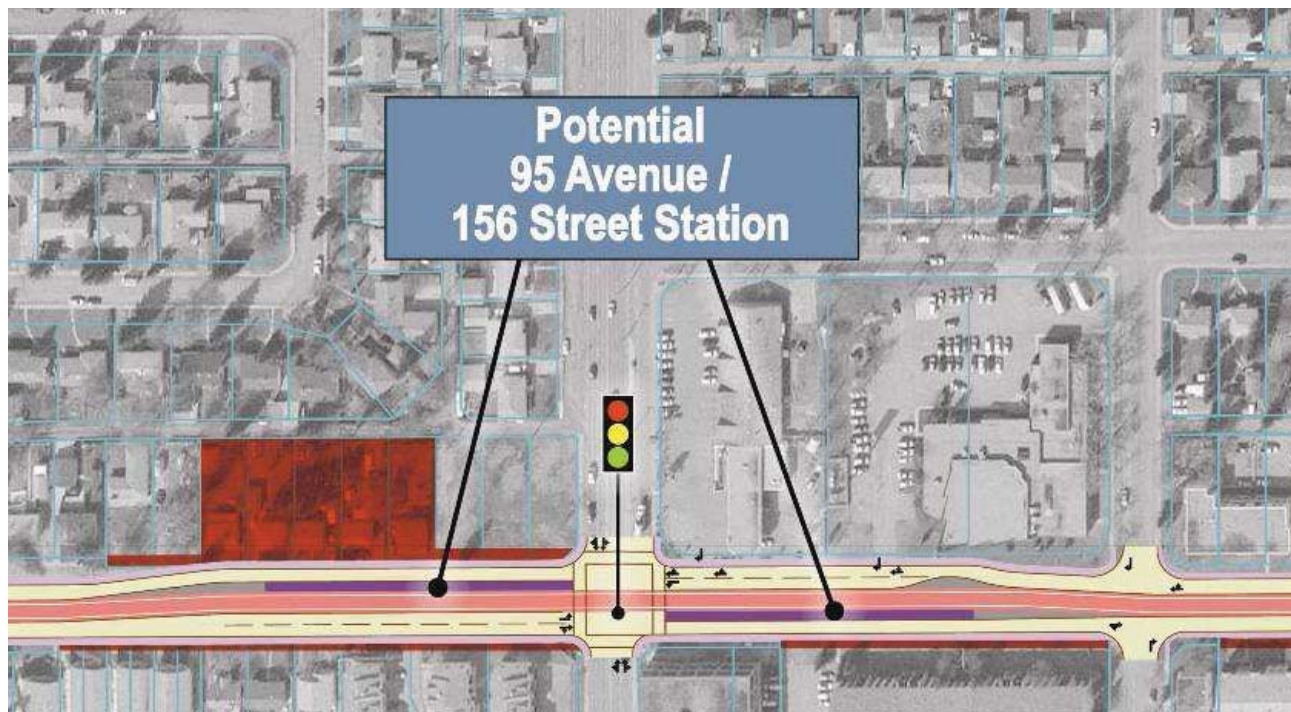
Meadowlark Station

www.edmonton.ca/LRTPProjects



95 Avenue/156 Street Station

www.edmonton.ca/LRTPProjects



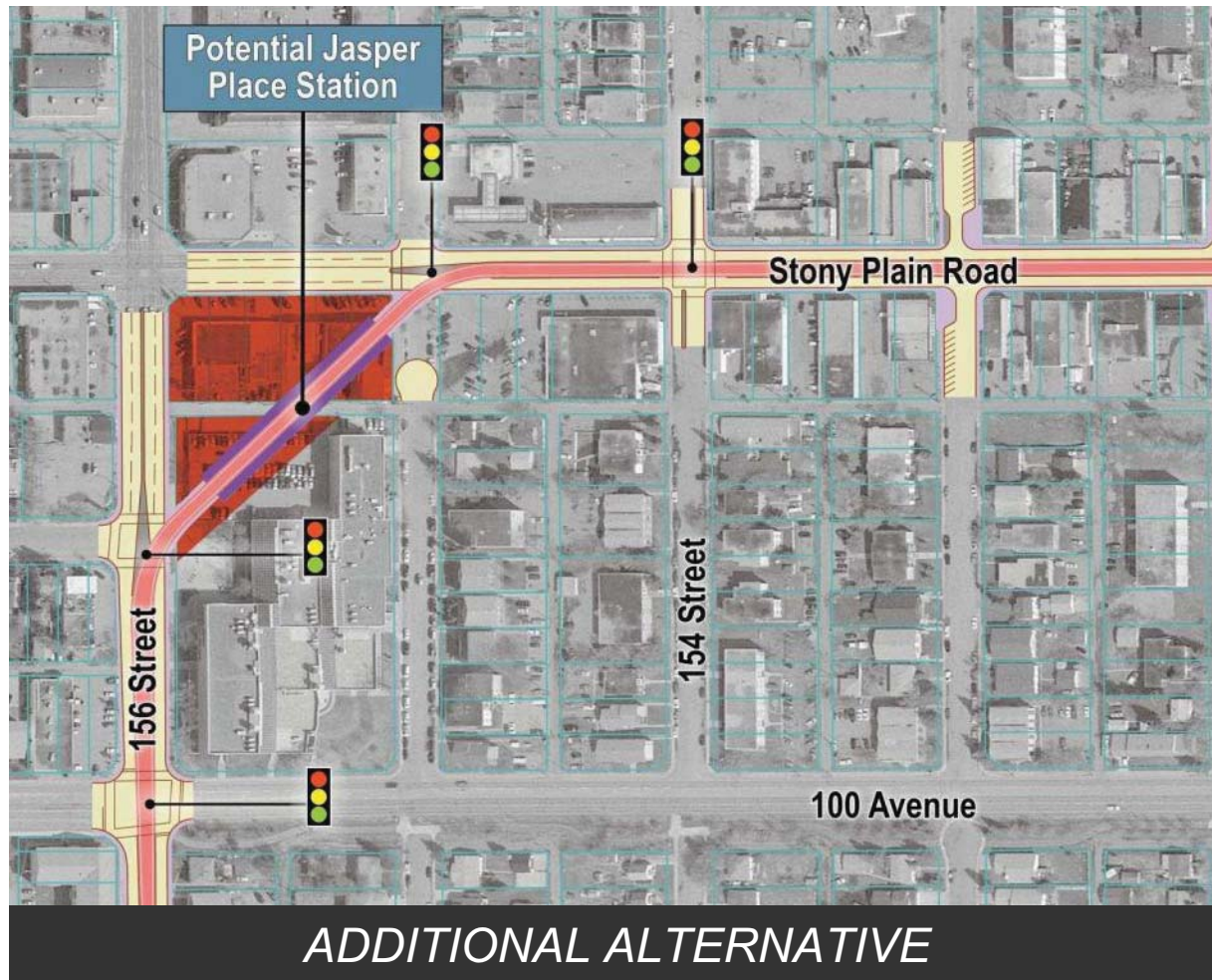
Jasper Place Station

www.edmonton.ca/LRTPProjects



Jasper Place Station

www.edmonton.ca/LRTPProjects



Stony Plain Road / 149 Street Station

www.edmonton.ca/LRTPProjects

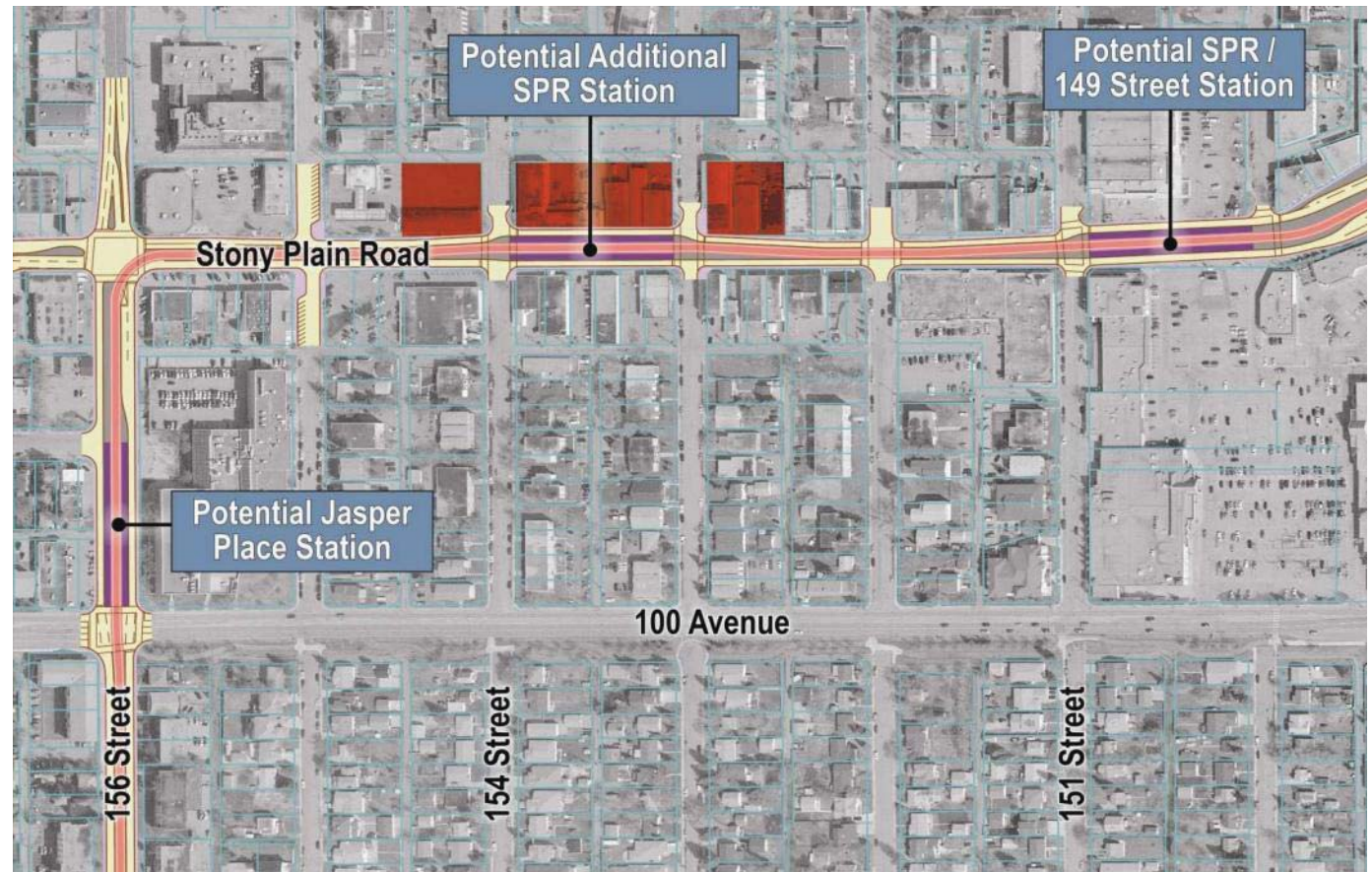


Additional Stony Plain Road Station

www.edmonton.ca/LRTPProjects

Additional station examined but not recommended due to

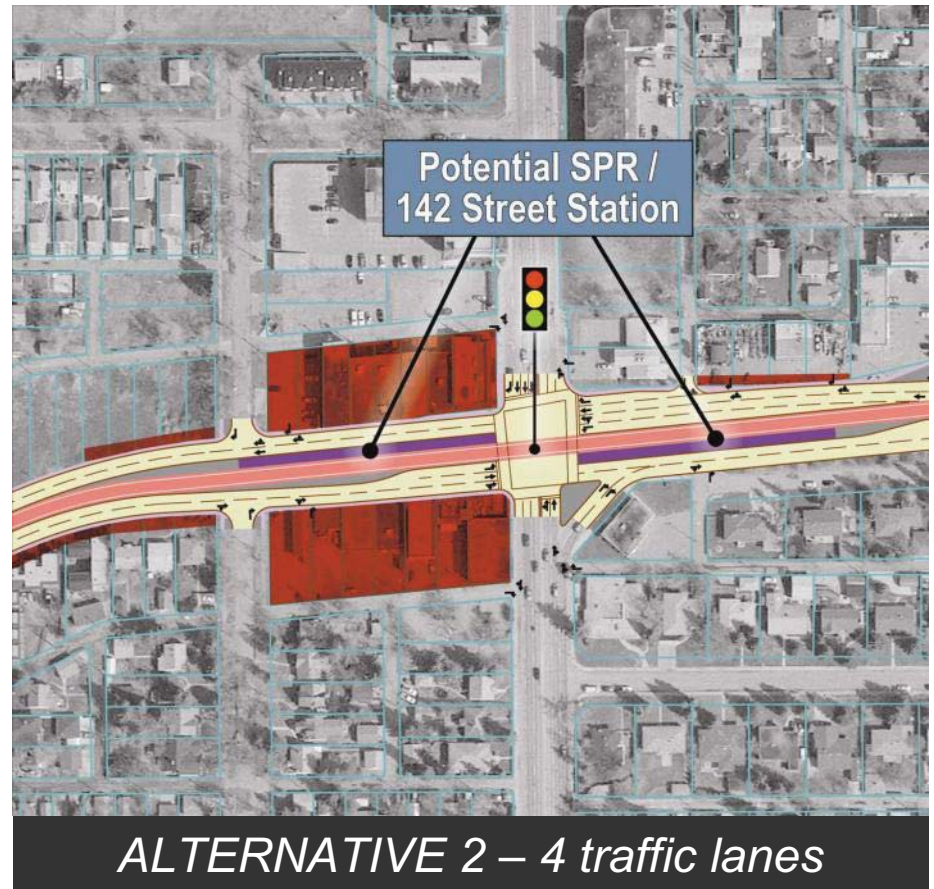
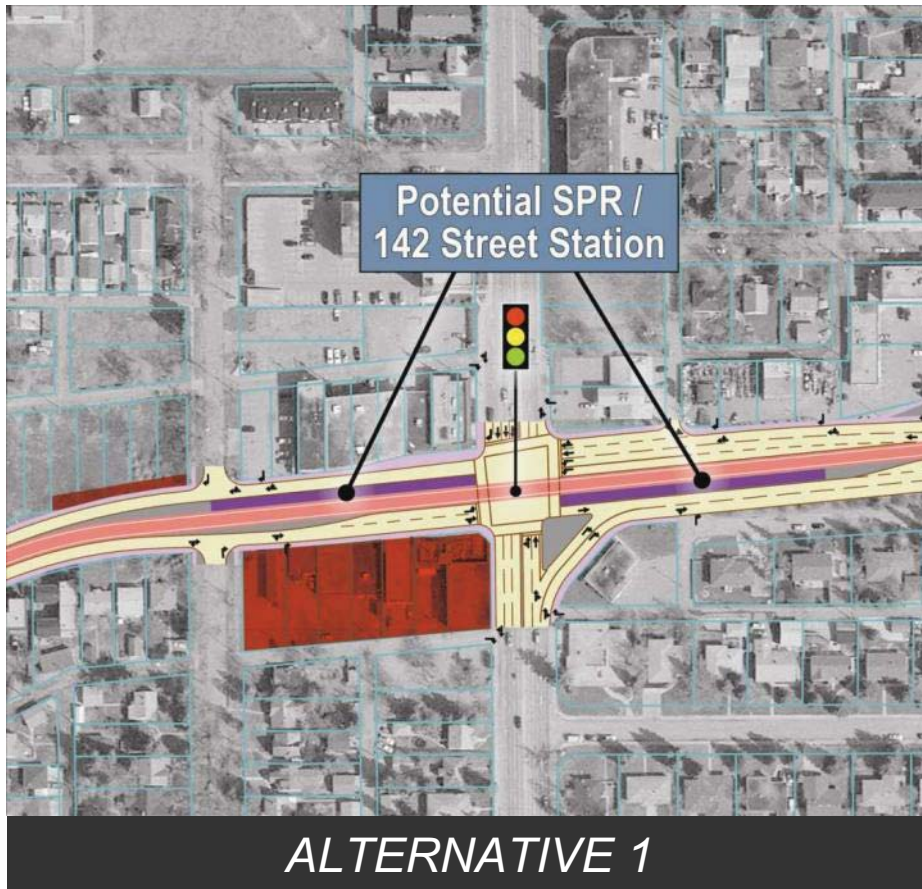
- close proximity to other stations
- property impacts



Additional Station on Stony Plain Road

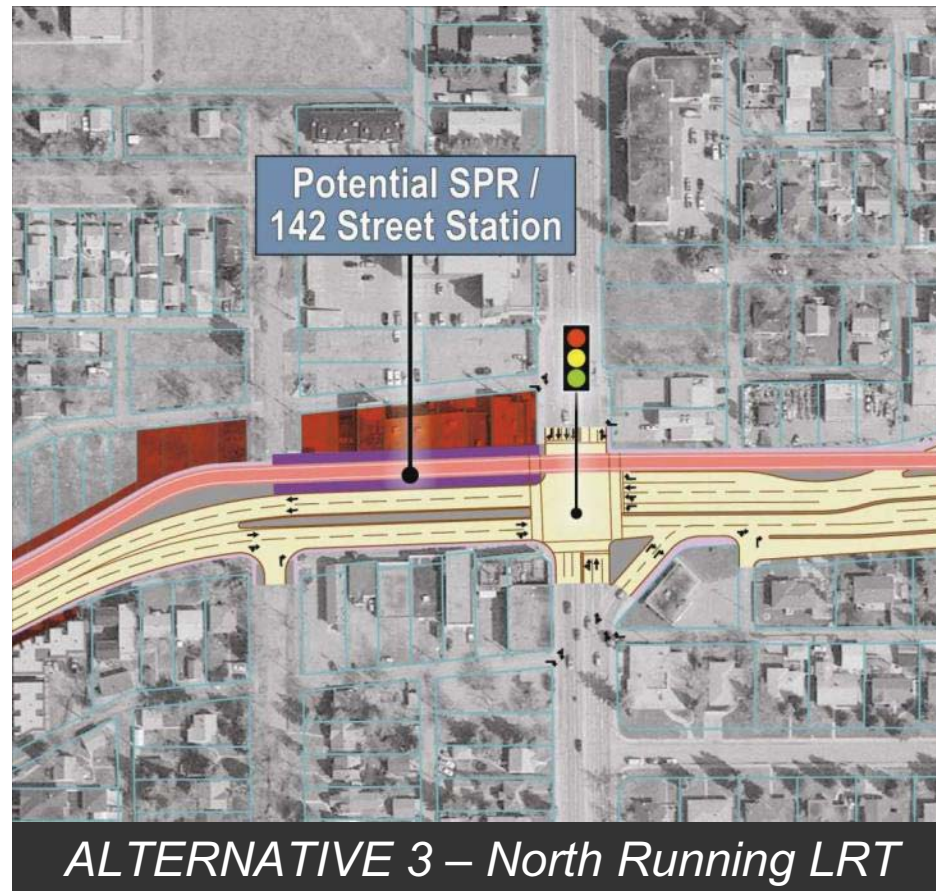
Stony Plain Road / 142 Street Station

www.edmonton.ca/LRTPProjects



Stony Plain Road / 142 Street Station

www.edmonton.ca/LRTPProjects





Stations - Workshop Questions

www.edmonton.ca/LRTProjects

Comment on the station in your neighbourhood

– How does this station fit into your neighbourhood?

*How does it affect your travel patterns?
(pedestrian, cyclist, or driver)*



West LRT

Meadowlark to Stony Plain Road / 142 Street

www.edmonton.ca/LRTProjects

Break



West LRT

Meadowlark to Stony Plain Road / 142 Street

www.edmonton.ca/LRTProjects

Session #3

Neighbourhood and Business Access



Neighbourhood and Business Access

www.edmonton.ca/LRTPProjects

Comment on your chosen section

- *How do the alternatives affect the way you get around and in/out of your neighbourhood and access businesses?*

Neighbourhood and Business Access

www.edmonton.ca/LRTProjects

Basic Principles of Neighbourhood Access:

- Different roads serve different purposes
- LRT will change direct access to roads within its corridor (like 87 avenue)
- Traffic signals will be located on major roads to facilitate LRT movement



Neighbourhood and Business Access

www.edmonton.ca/LRTProjects

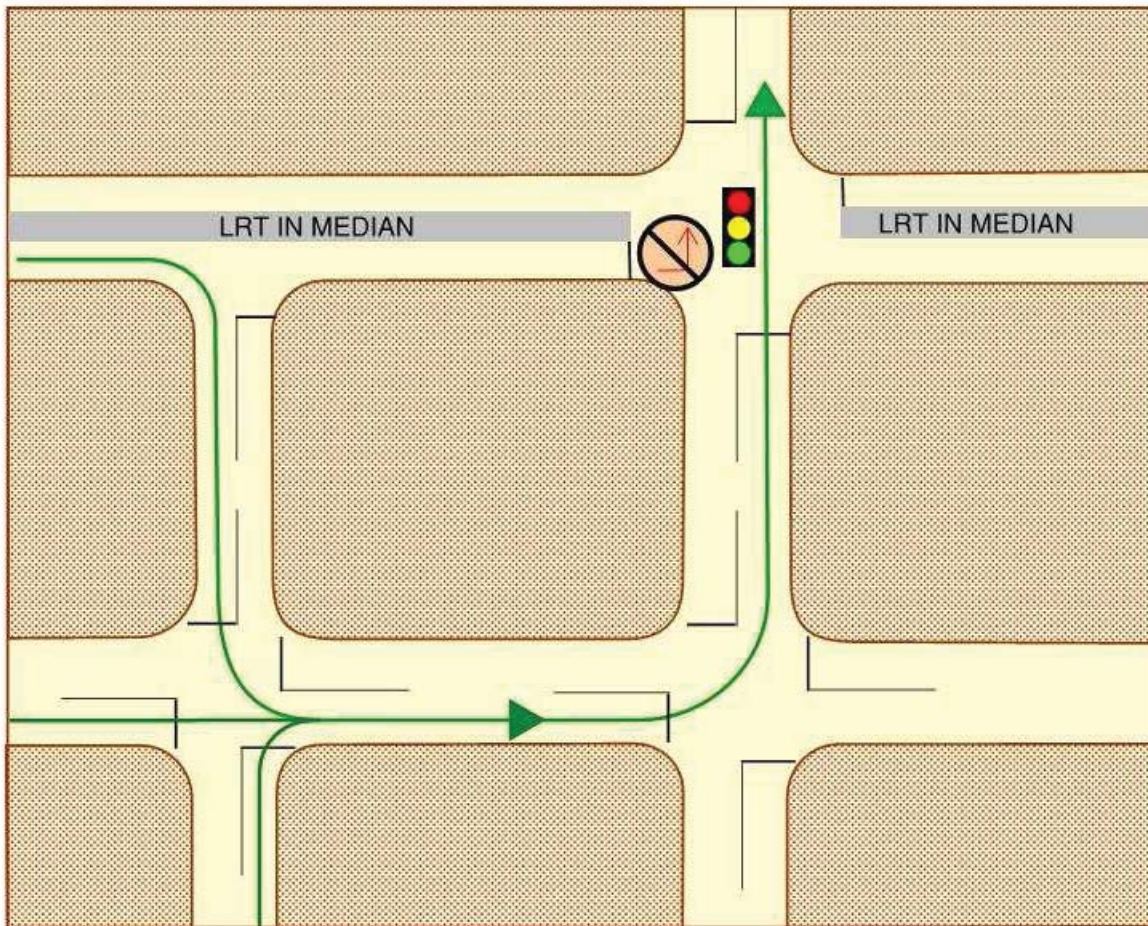
Basic Principles of Neighbourhood Access:

- Turns across LRT tracks will be at signalized intersections
- Not ALL signalized intersections will allow left hand turns
- A supporting street and circulation system will be provided



Neighbourhood and Business Access

www.edmonton.ca/LRTProjects



ACCESS

- Existing left turn movement at intersection removed
- Future jug-handle movements provided



Parking Definitions

www.edmonton.ca/LRTProjects

- **On-Street Parking:**
 - Space for parking cars within the street right-of-way
- **Service Road:**
 - A local road that runs parallel to a higher speed road
 - Often accommodates on-street parking

Parking

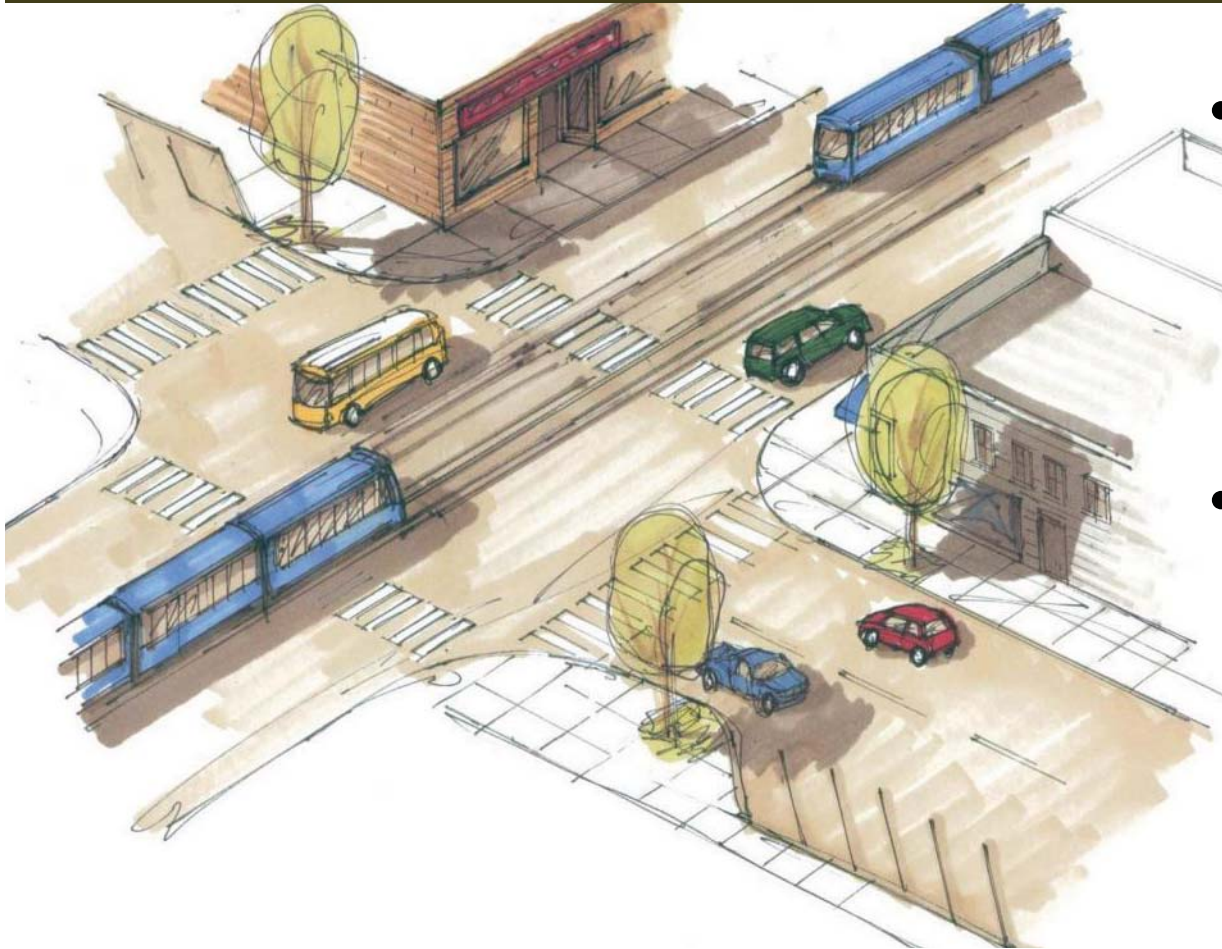
www.edmonton.ca/LRTPProjects

- Existing service road removed along 156 Street
- Existing on-street parking removed along Stony Plain Road



Other Parking Opportunities

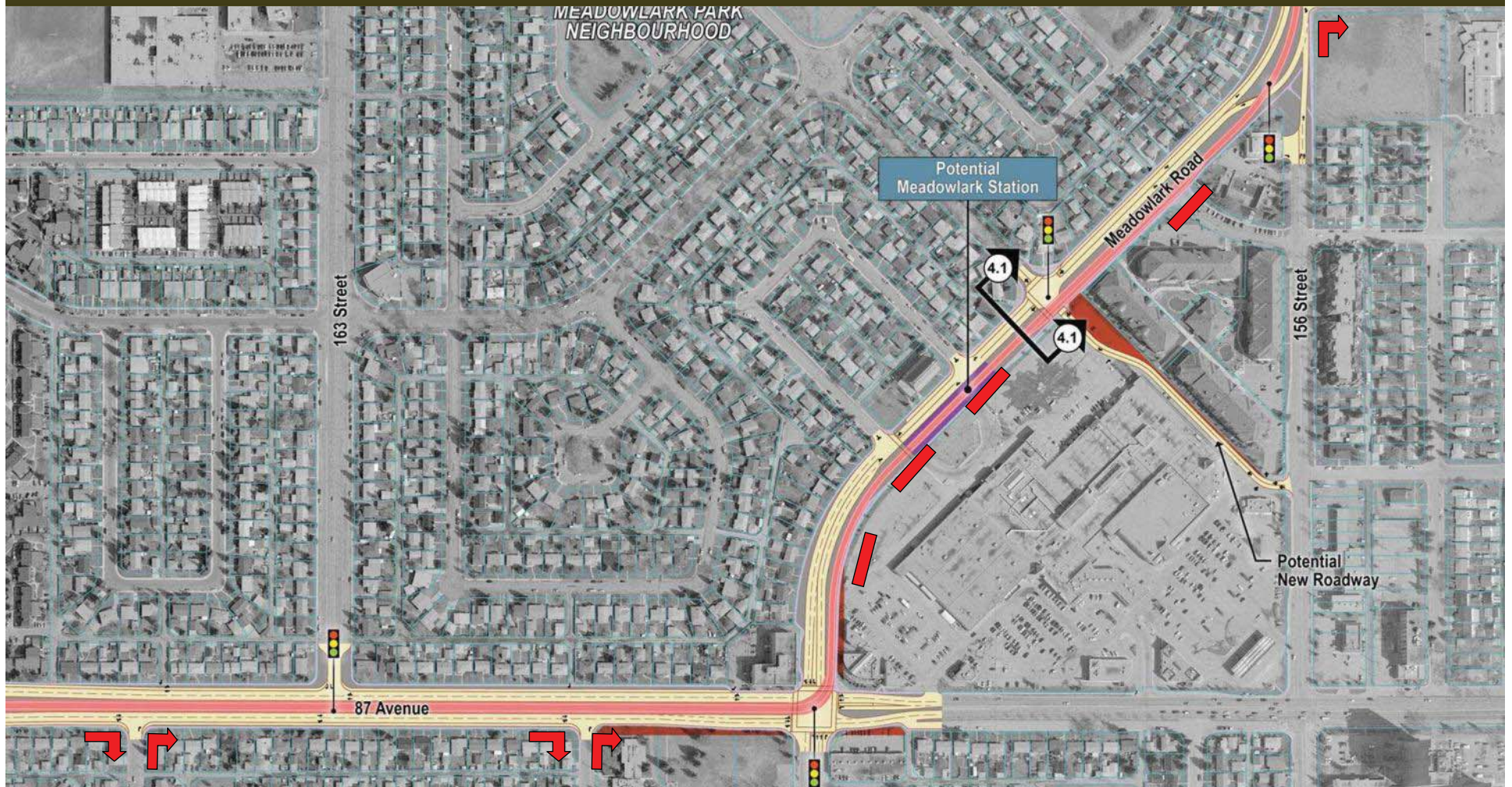
www.edmonton.ca/LRTPProjects



- Angle parking on side streets provides customer access
- Utilize back alleyways to provide parking and promote traffic circulation

Neighbourhood and Business Access – Segment A

www.edmonton.ca/LRTPProjects



ALTERNATIVE 1 – Meadowlark Road

Neighbourhood and Business Access – Segment A

www.edmonton.ca/LRTPProjects



ALTERNATIVE 2 – 156 Street

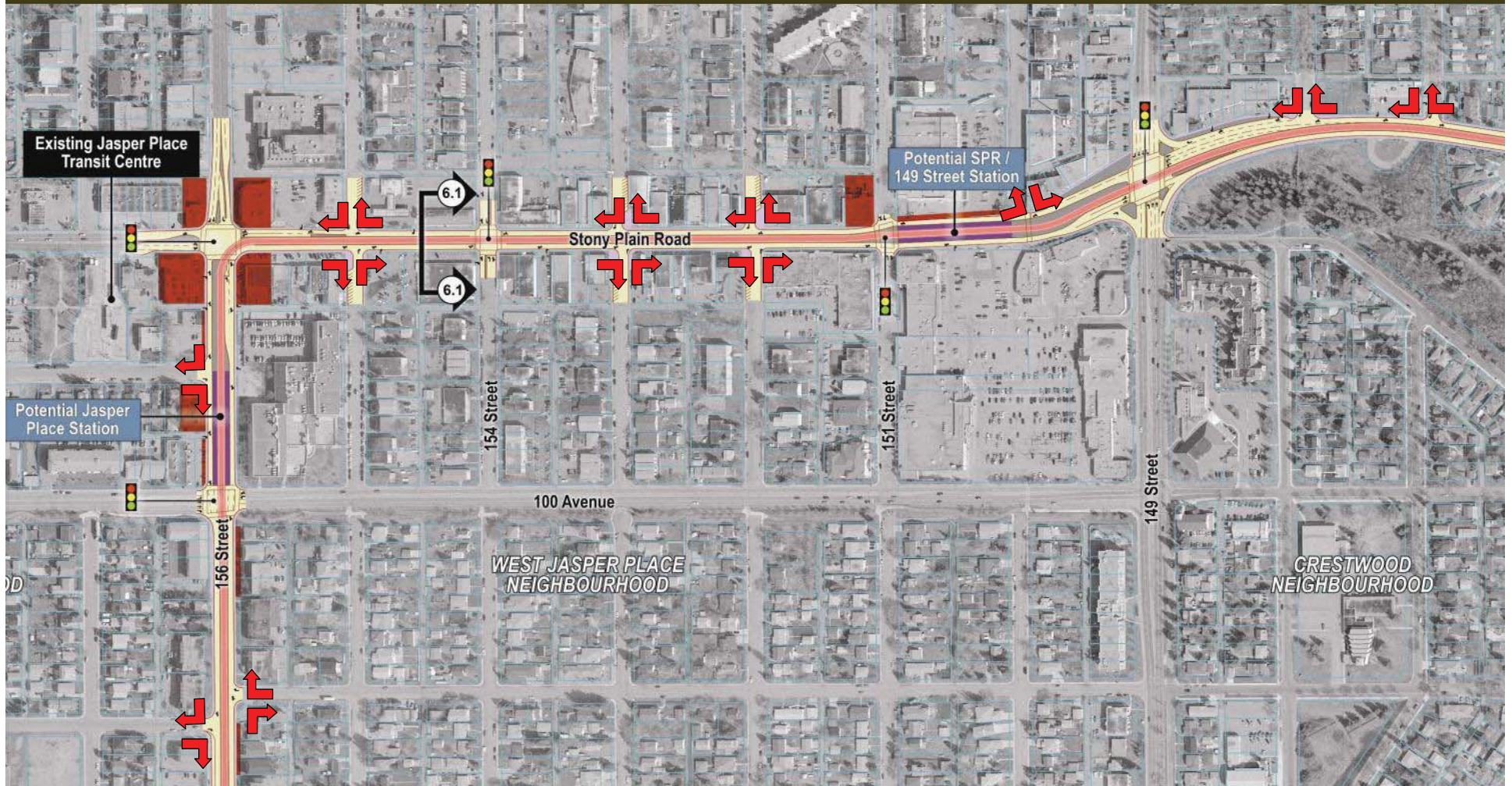
Neighbourhood and Business Access – Segment B

www.edmonton.ca/LRTPProjects



Neighbourhood and Business Access – Segment C

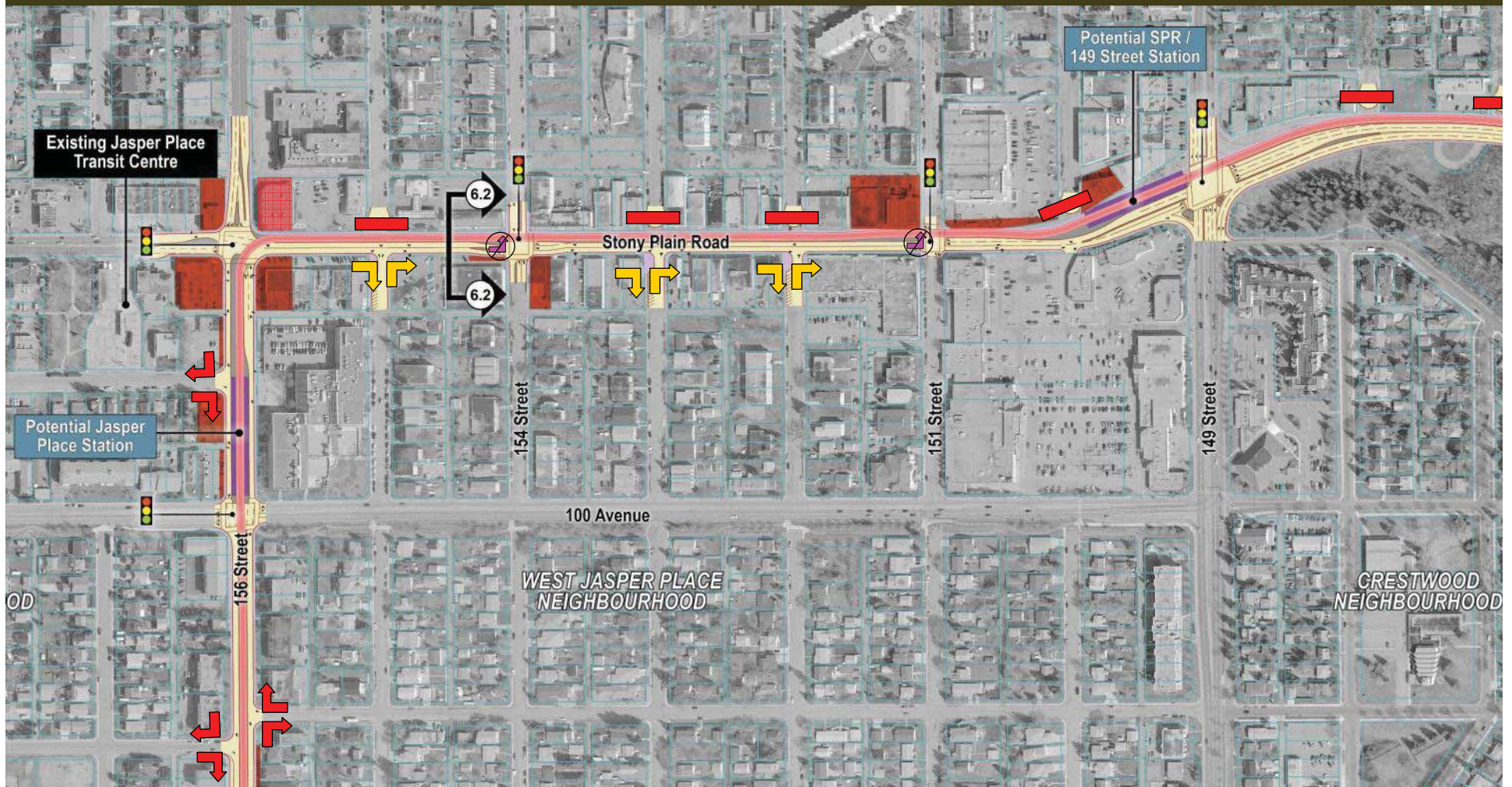
www.edmonton.ca/LRTProjects



ALTERNATIVE 1 – Centre Running LRT

Neighbourhood and Business Access – Segment C

www.edmonton.ca/LRTProjects



ALTERNATIVE 2 – North Running LRT

Neighbourhood and Business Access – Segment D

www.edmonton.ca/LRTPProjects



ALTERNATIVE 1 – Centre Running LRT - 2 traffic lanes

Neighbourhood and Business Access – Segment D

www.edmonton.ca/LRTPProjects



ALTERNATIVE 2 – Centre Running LRT – 4 traffic lanes

Neighbourhood and Business Access – Segment D

www.edmonton.ca/LRTPProjects



ALTERNATIVE 3 – North Running LRT – 3 or 4 traffic lanes



Neighbourhood and Business Access – Workshop Questions

www.edmonton.ca/LRTProjects

Comment on your chosen section

– How do the alternatives affect the way you get around and in/out of your neighbourhood and access businesses?



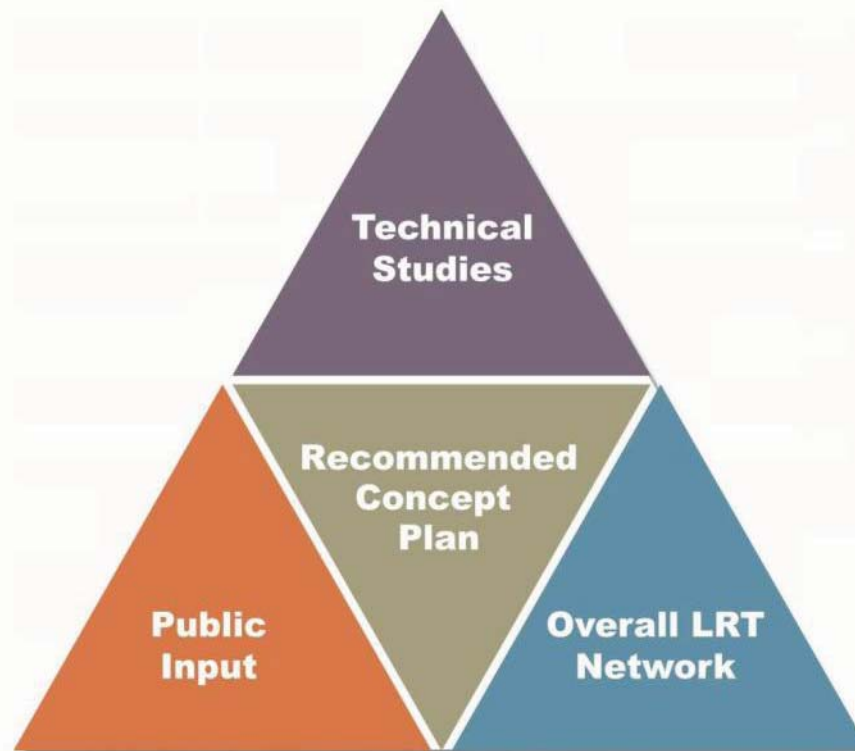
Wrap Up

www.edmonton.ca/LRTProjects

- Fill out Questionnaires
- Attend other workshops
- Presentation available on website
www.edmonton.ca/LRTProjects

Wrap Up

www.edmonton.ca/LRTProjects





LRT Workshop Session Schedule

www.edmonton.ca/LRTProjects

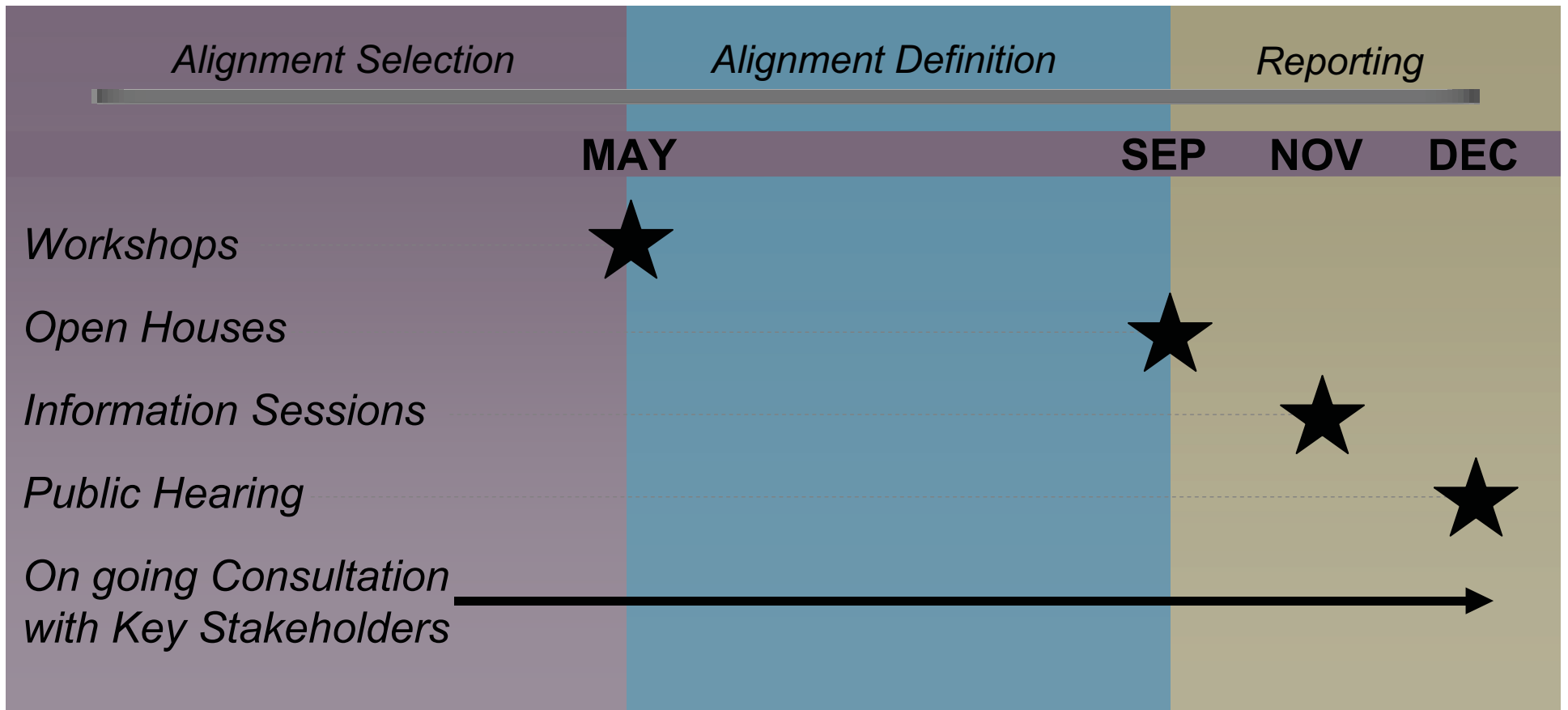
West LRT	
May 4, 2010	Lewis Estates to Meadowlark
May 6, 2010	Meadowlark to SPR/142 St.
May 12, 2010	SPR/149 St. to SPR/124 St.
May 13, 2010	Groat Road to Downtown

Southeast LRT	
May 18, 2010	Downtown to 95 Ave/83 St
May 19, 2010	Strathearn to Whyte Ave
May 26, 2010	Bonnie Doon to Wagner
May 27, 2010	Wagner to Mill Woods

www.edmonton.ca/LRTProjects

Next Steps

www.edmonton.ca/LRTProjects





West LRT

Meadowlark to Stony Plain Road / 142 Street

www.edmonton.ca/LRTProjects

Thank you!