

WALTERDALE BRIDGE REPLACEMENT

PROJECT UPDATE

(April 2014)

After nearly 100 years, the Walterdale Bridge has reached the end of its service life. A \$155 million replacement project is under construction, with the new bridge expected to open in late 2015. The current bridge will be removed in 2016.

CONSTRUCTION

Thrust block construction is ongoing in all four cofferdams on both sides of the river. The thrust blocks will serve as the foundation of the bridge and will anchor the arches that carry the bridge load.

Work on the north and south bridge abutment is also underway.

DECORATIVE STREETLIGHTS

Those driving down Queen Elizabeth Park Road in the past few weeks may have noticed new curved decorative streetlights along the roadway. These new streetlights are unique to the Walterdale Bridge reconstruction project. They will also be placed along Walterdale Hill Road and continue across the signature bridge structure once it is complete.



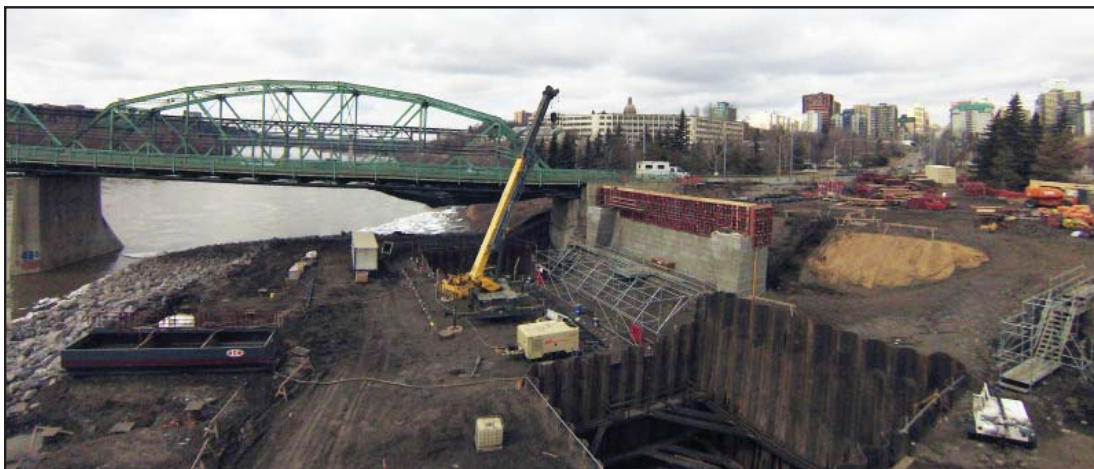
Decorative streetlights

WALTERDALE HILL ROAD CLOSURE

Starting **Monday, May 5**, Walterdale Hill Road will be closed for two to three months for road realignment.

Those who use Walterdale Hill Road for commuting to downtown can expect significant delays on 109 Street and Saskatchewan Drive.

Suggested detour routes are Queen Elizabeth Park Road, 99 Street/Scona Road and Groat Road.



North abutment and cofferdam

The Walterdale Bridge will remain open to traffic and access to the Kinsmen Sports Centre and John Walter Museum will be available via Queen Elizabeth Park Road.

WALTERDALE BRIDGE REPLACEMENT

HISTORICAL RESOURCES

In 2013, crews removed the Interpretive Belvedere from within the Traditional Burial Grounds/Fort Edmonton Cemetery north of the bridge to accommodate construction. The panels from the Interpretive Belvedere have been refurbished and will be installed at a temporary location just north of the Traditional Burial Grounds/Fort Edmonton Cemetery in June.

TRANSIT DETOURS

During the closure of Walterdale Hill Road, Edmonton Transit Routes 9 and 197 will detour via Saskatchewan Drive and Queen Elizabeth Park Road.

A temporary bus stop will also be available at the bottom of Queen Elizabeth Park Road.

More information on transit impacts is available at www.takeets.com

PEDESTRIAN/CYCLIST DETOURS

Multi-use trails affected by construction remain closed, however new trail detours will be in effect to accommodate work on Walterdale Hill Road.

New detour information signs will be posted along the multi-use trail and are also available on the project website.

CONSTRUCTION TIMELINE

2013	<p>Completed</p> <ul style="list-style-type: none"> Majority of tree clearing. Access roads and in-river berms. Park trails rerouted. Interpretive belvedere removed. Utilities relocated and drainage system updated. Realignment of Queen Elizabeth Park Road. Installation of pilings and construction of cofferdams needed for thrust blocks.
2014	<p>Ongoing/Upcoming</p> <ul style="list-style-type: none"> Move interpretive belvedere panels to temporary location. Construct thrust blocks. Construct and erect bridge arches. Realign Walterdale Hill Road. Construct new access roads for Kinsmen Sports Centre. Construct new south side trails.
2015	<ul style="list-style-type: none"> Construct bridge deck. Connect roads to new bridge alignment. New bridge open to traffic.
2016	<ul style="list-style-type: none"> Landscaping/trail connections. Demolition of old bridge.



NEW SITE PHOTOS

New aerial photos of thrust block and abutment construction on the north side are available at <http://photos.edmonton.ca>