



Neighbourhood Renewal: What it's about

The City of Edmonton's Neighbourhood Renewal program will build new roads, curbs, gutters and sidewalks and install new street lights in the neighbourhood. The program will explore other neighbourhood improvements such as street crossings, additional bike connections and improvements to City-owned parks and open spaces.

Project update

Over the last several months, guided by learnings from City policies, technical data and public engagement, the Project Team has been preparing proposed design options. These options intend to update Wihkwëntōwin ᐃᓪᓱᓄᓄᓄᓄᓄᓄ (Oliver) infrastructure to meet current City standards and guidelines, and shape the neighbourhood for the next 30 to 50 years.

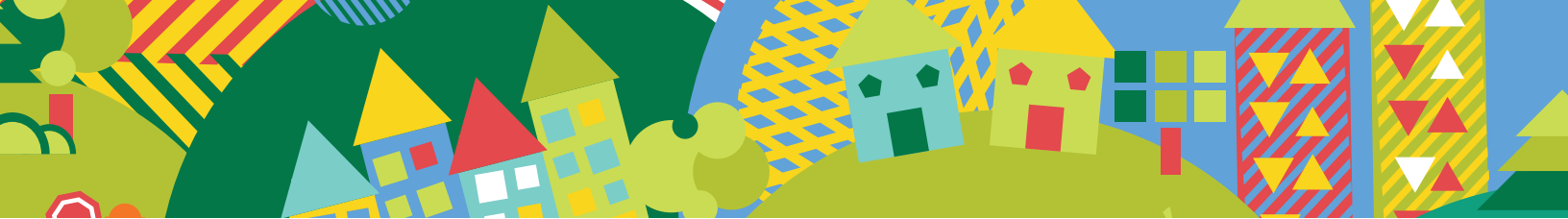
During the **Exploring Options and Tradeoffs** stage, these design options are being shared for your feedback as we work towards the final neighbourhood design.

With the large number of opportunity areas, there are many proposed design options. Therefore, options are being presented in two rounds. We are currently in Round 1. Watch for details on Round 2 later this year. We encourage you to share your thoughts during both rounds!

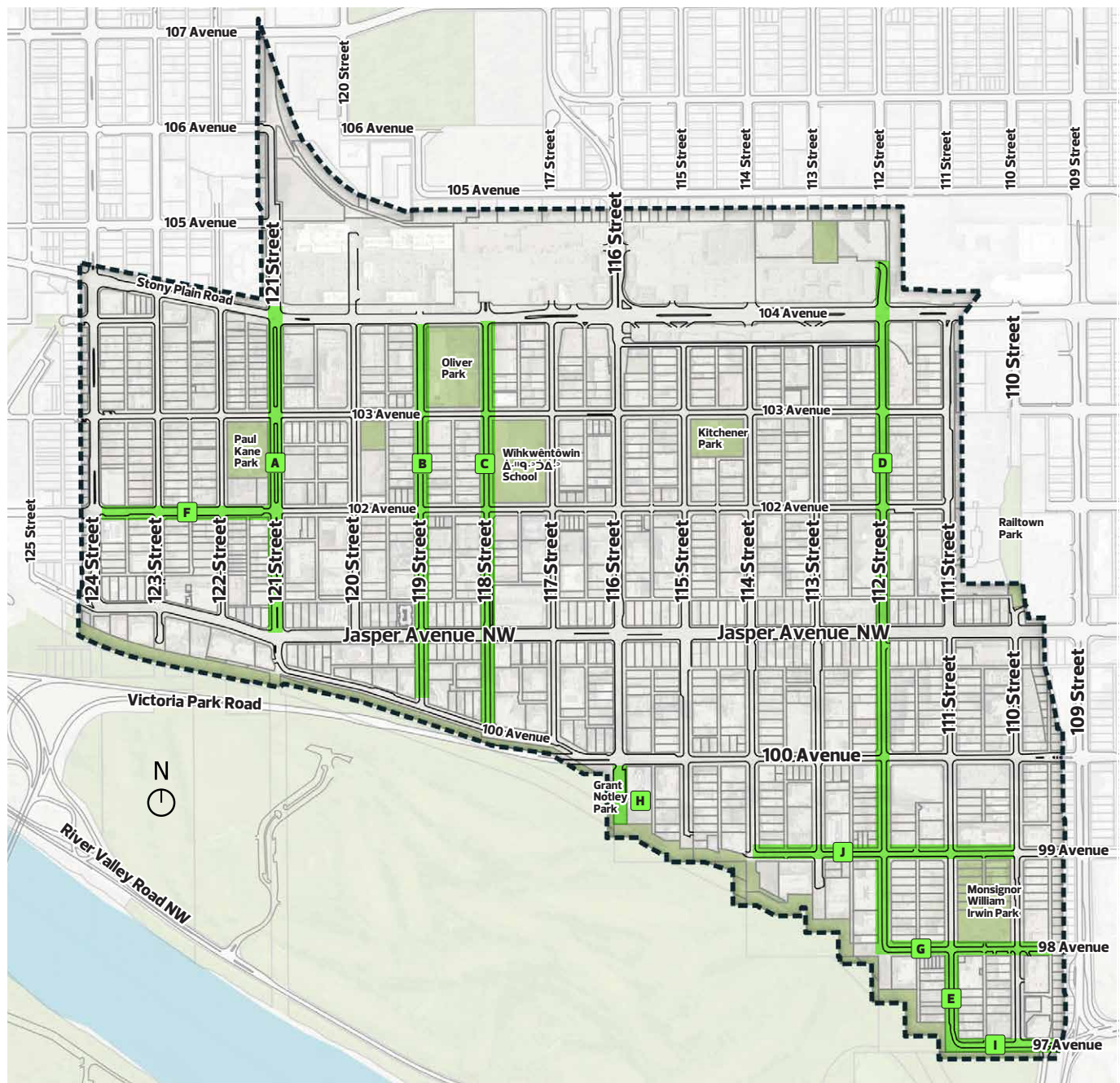
We are also sharing the draft project Vision and Guiding Principles for feedback during Round 1. These summarize the voice of neighbourhood residents and stakeholders and will help guide project decisions. See drafts on Page 5 and 6 of this newsletter and share your thoughts in our online survey.



Review the **What We Heard** report for the previous stage at edmonton.ca/BuildingWihkwentowin



Areas with Round 1 design options



No.	Location
A	121 Street: 104 Avenue to Jasper Avenue
B	119 Street: 104 Avenue to 100 Avenue
C	118 Street: 104 Avenue to 100 Avenue
D	112 Street: North of 104 Avenue to 98 Avenue

No.	Location
E	111 Street: 98 Avenue to 97 Avenue
F	102 Avenue: 124 Street to 121 Street
G	98 Avenue: 112 Street to Alley East of 110 Street
H	116 Street: South of 100 Avenue

No.	Location
I	97 Avenue: 111 Street to 109 Street
J	99 Avenue: 114 Street to 110 Street



Exploring Options and Tradeoffs Round 1 Options

Below is a list of the design options we are sharing for your feedback. Visit edmonton.ca/BuildingWihkwentowin to review our design booklet, complete with images and details.

98 Avenue: 111 Street to alley east of 110 Street

Option 1: Local street bikeway*, increased public space

Option 2: Shared pathway, increased public space

99 Avenue: 114 Street to 110 Street

Option 1: Traffic calming measures

Option 2: Road closure / parklet

102 Avenue: 124 Street to 121 Street

Option 1: Improved public space, two-way traffic

Option 2: Increased and improved public space, one-way traffic

Active transportation connection:
112 Street/98 Avenue/111 Street

Option 1: Two-way bike lane / one-way streets

Option 2: Local street bikeway*, road closures

116 Street: South of 100 Avenue

Option 1: Increased and improved public space, parallel parking

Option 2: Improved public space, perpendicular parking

Active transportation connection: 118 Street or 119 Street

Option 1: 118 Street: 104 Avenue to 100 Avenue – Two-way bike lane / one-way traffic

Option 2: 118 Street: 104 Avenue to 100 Avenue – Shared pathway / two-way traffic

Option 3: 119 Street: 104 Avenue to 100 Avenue – Local street bikeway* / two-way traffic

121 Street: 104 Avenue to Jasper Avenue

104 Avenue to 103 Avenue

103 Avenue to 102 Avenue

Option 1: Linear park, partial road closure with one-way traffic

Option 2: Linear park, full road closure

102 Avenue to Jasper Avenue

*Local street bikeway: A street where people who bike and people who drive share the street without separated bike infrastructure. Modifications such as traffic calming and diversion elements to reduce vehicle volumes and speed maximize the safety and comfort for people who bike to appeal to users of all ages and abilities. The bikeway typically includes pavement markings and signage.





Draft Vision and Guiding Principles

The Wihkwêntôwin ᐃᓐᓴᓐᓴᓐ (Oliver) Neighbourhood Renewal Vision and Guiding Principles were developed based on input received from the public and stakeholders during engagement in fall 2023. They are intended to be the voice of the neighbourhood and help guide project decisions. **We invite you to review the draft below and provide your feedback in the online survey.**

Draft Vision

Wihkwêntôwin ᐃᓐᓴᓐᓴᓐ (Oliver) provides spaces and opportunities for residents and visitors to come together to meet, gather and build community. Walking, rolling and biking are prioritized and are safe and convenient for all ages and abilities. Active transportation connections link key destinations both within and outside the neighbourhood. Trees and greenery beautify the neighbourhood and support environmental sustainability. The neighbourhood's location, design and walkability are celebrated and make it unique in the Edmonton context.

Draft Guiding Principles



- 1. **Provide for both casual and commuter oriented walking, rolling and biking connections that are clean, smooth, comfortable, convenient, safe and link to key destinations in and out of the neighbourhood for all users**

Supporting design principles:

Along with replacing all sidewalks, adding curb ramps and upgrading street lights, the Project Team will explore ways to:

- + Provide walking, rolling and biking connections to key destinations, including transit stops
- + Prioritize City-owned spaces for those who walk, bike and roll
- + Improve crossing safety
- + Meet the active transportation needs of all ages, abilities and identities
- + Improve wayfinding signage
- + Design infrastructure that is usable in all seasons
- + Include comfortable seating areas along highly used walking, rolling and biking routes
- + Enhance the urban tree canopy
- + Provide safe and convenient bike parking





2. Ensure parks and open spaces are green, welcoming, vibrant, accessible and provide an inviting and thriving extension of living spaces where residents and their visitors feel safe to relax, gather, socialize and play year round

Supporting design principles:

The Project Team will explore ways to:

- + Improve the visibility of users
- + Improve connections to and through public spaces
- + Enhance the urban tree canopy and naturalization
- + Create welcoming gathering areas
- + Incorporate active and passive recreation and activity areas
- + Explore opportunities to add additional green space within road right-of-way

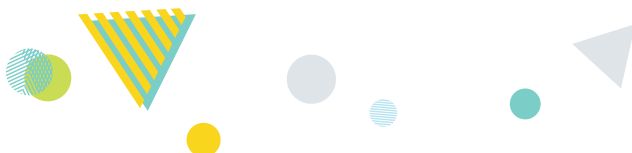
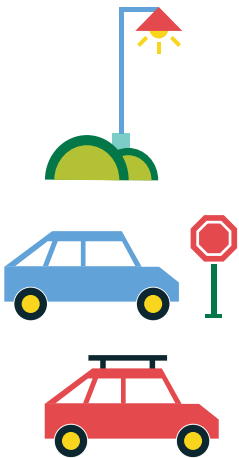


3. Provide people driving with smooth, navigation-friendly roads that focus on taking them slowly and safely to destinations within the community, rather than through it

Supporting design principles:

Along with replacing roads and upgrading street lights, the Project Team will explore ways to:

- + Enhance safety at intersections and reduce conflicts between people walking, rolling, biking and driving
- + Design roadways that encourage slow speeds
- + Improve wayfinding and traffic signage
- + Provide on-street public parking in priority areas





City policies

Multiple City policies and guidelines provide specific direction to the Neighbourhood Renewal Project Team to inform the development of the new neighbourhood design. In this newsletter we highlight the following:

Community Traffic Management Policy – supports liveable, safe communities by providing guidance on addressing community traffic issues. This may include installing physical measures that minimize traffic shortcutting and speeding to enhance safety for residents and all road users.

Corporate Tree Policy – A strategy for sustainably managing and enhancing our diverse urban forest. If any trees are removed by the project, the equivalent value will be replaced with new tree plantings in the neighbourhood.

Climate Resilience Edmonton: Adaptation Strategy and Action Plan – The plan focuses on understanding the climate impacts due to ongoing climate change, and provides insight into how the City can build resilience around those impacts. Neighbourhood Renewal can help implement this by using urban design to decrease urban heat islands, enhancing the tree canopy and installing Low Impact Development (LID)* systems.

**Low Impact Development (LID) infrastructure uses natural features to protect water quality and lessen the impact to our drainage system, resulting in reduced local flooding.*

Did you know?

- ✦ The City has a commitment to protect and conserve our urban forest by planting two million new trees as the population grows. The target is to reach 20 per cent forest canopy coverage by 2071
- ✦ Reaching two million trees involves locating viable sites for planting boulevard and open space trees
- ✦ The Neighbourhood Renewal Project Team works with Urban Forestry to conserve trees, while meeting the project objectives. This involves tree protection during the construction stage
- ✦ Trees that must be removed are replaced by new plantings where possible, with improved growing conditions for new plantings

The Wìkwèntowìn ᐃᓐᓇᓐᓇᓐ (formerly Oliver) Community League is also doing some renewal and change related to the new neighbourhood name. Be on the lookout at olivercommunity.com and in future newsletters about opportunities to engage with the new name and new branding for the league.

City projects

Many City projects are underway in Wìkwèntowìn ᐃᓐᓇᓐᓇᓐ (Oliver) and the Neighbourhood Renewal Project Team continues to work closely with their project teams to ensure designs work together and construction schedules are coordinated to minimize impacts.

For updates on projects including Valley Line LRT, Imagine Jasper Avenue and High Level Bridge Rehabilitation, visit edmonton.ca.





Neighbourhood name change

In February 2024, City Council voted to approve the Wihkwêntôwin ᐃᓄᓄᓄᓄᓄᓄ (Oliver) Community League's recommendation to change the neighbourhood name to Wihkwêntôwin ᐃᓄᓄᓄᓄᓄᓄ (pronounced We-Kwen-To-Win), which means circle of friends in Cree. We are pleased to phase in exclusive use of it in all Neighbourhood Renewal materials.

Next steps

Watch for details later this year for Exploring Options and Tradeoffs Round 2!

Areas not included in Round 1 are being explored. Stay tuned for more information.

Stay informed

For more information and to sign up for project updates, visit edmonton.ca/BuildingWihkwentowin*

**Residents who signed up for updates at edmonton.ca/BuildingOliver do not need to sign up again.*

For more information:

Web: edmonton.ca/BuildingWihkwentowin

Email: BuildingGreatNeighbourhoods@edmonton.ca

Call: 311



**SHARE YOUR VOICE
SHAPE OUR CITY**

