



Downtown LRT Connector Draft Concept Plan

www.edmonton.ca/LRTProjects

**Welcome
Open House
November 2, 2010**



Meeting Purpose

www.edmonton.ca/LRTProjects

- Our Team's commitment to you:
 - To provide you with information about the LRT planning process and corridor alignment definition
 - Answer questions and clarify information, so you are as informed as possible
 - Gather your feedback for report to City Council



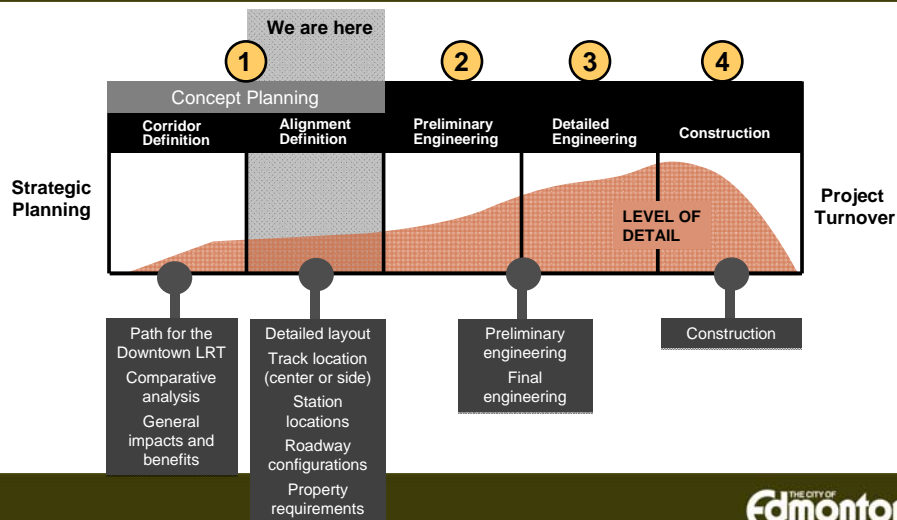
Agenda

www.edmonton.ca/LRTProjects

- Meeting purpose
- LRT planning
- Edmonton LRT network
- The potential of LRT (video)
- Stakeholder & Public involvement process & update
- Draft Concept Plans
- Next steps
- Comments & questions

LRT Planning

www.edmonton.ca/LRTProjects





Downtown LRT Connector Draft Concept Plan

www.edmonton.ca/LRTProjects

Edmonton LRT Network



Edmonton's Planning Hierarchy

www.edmonton.ca/LRTProjects

- The Way Ahead
(Strategic Plan) City Vision
- The Way We Grow
(Municipal Development Plan)
- The Way We Move
(Transportation Master Plan)
- Transit-Oriented Development
(TOD) Guidelines
- Capital City Downtown Plan



Public Transportation - Strategic Objective 5.1

www.edmonton.ca/LRTProjects

“The City will pursue expansion of the LRT to all sectors of the city with a goal to increase transit ridership and transit mode split, and spur the development of compact, urban communities.”

- Transportation Master Plan



THE CITY OF
Edmonton

Capital City Downtown Plan

www.edmonton.ca/LRTProjects



- Integrates new and emerging City policy
- Guides development of the downtown
 - Vibrant
 - Attractive
 - Higher-density
 - Mixed-use
 - Walkable
- Supports the integration of at-grade LRT as a catalyst for mixed-used

THE CITY OF
Edmonton

Transit-Oriented Development (TOD) Guidelines

www.edmonton.ca/LRTProjects

- Outlines land use and community investment recommendations near LRT nodes and along major bus corridors.



THE CITY OF
Edmonton

Urban-Style Low-Floor LRT

www.edmonton.ca/LRTProjects



- Operates on the surface
- Electrically powered from overhead lines.
- Low-floor vehicles
- Low-level platforms
- Integrated LRT stops in the Downtown streetscape
- Integrated facilities for pedestrians and bikes
- Urban design, redevelopment, TOD opportunities
- Encourage higher density and mixed use

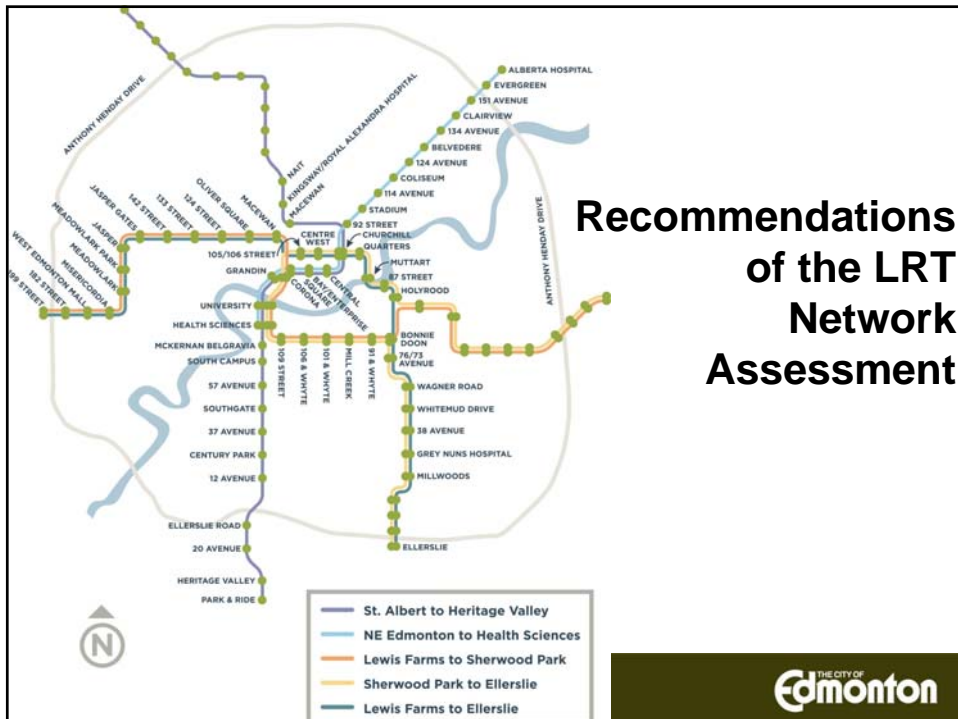
THE CITY OF
Edmonton

Urban-Style Low-Floor LRT

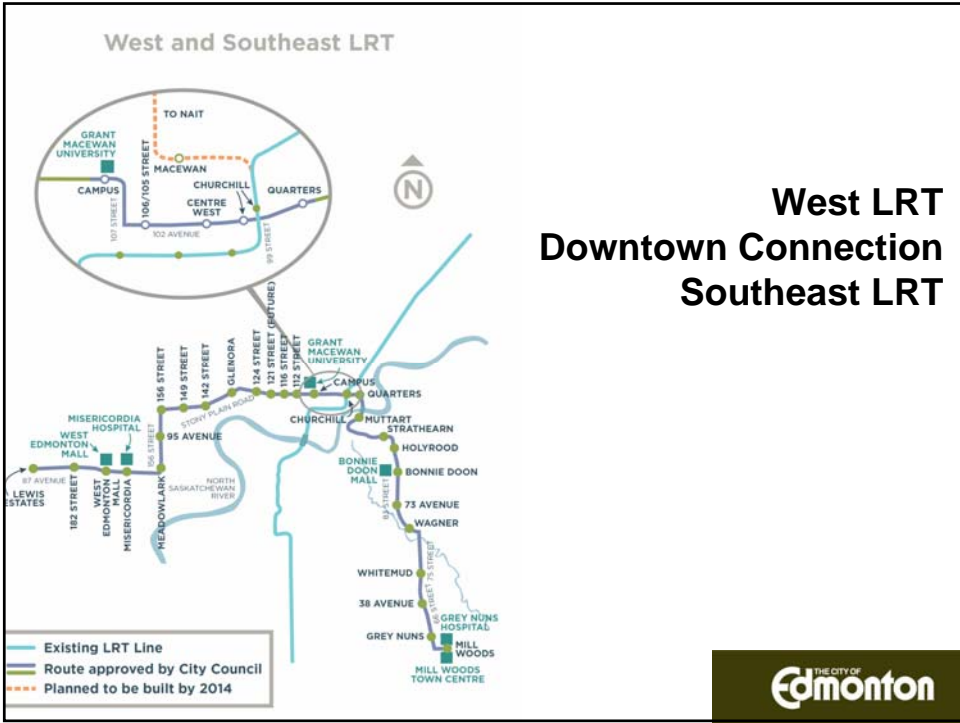
www.edmonton.ca/LRTProjects



THE CITY OF
Edmonton



THE CITY OF
Edmonton



Downtown LRT Connector Draft Concept Plan

www.edmonton.ca/LRTProjects

Public Involvement

**THE CITY OF
Edmonton**



Process

www.edmonton.ca/LRTProjects

- Fall 2010 stakeholder involvement on design options
 - Meetings, presentations, and interviews (120 participants)
 - Involved groups representing residential, commercial, active transportation, transit users and institutions.
 - Booklet with options published online at www.edmonton.ca/LRTProjects



What we heard

www.edmonton.ca/LRTProjects

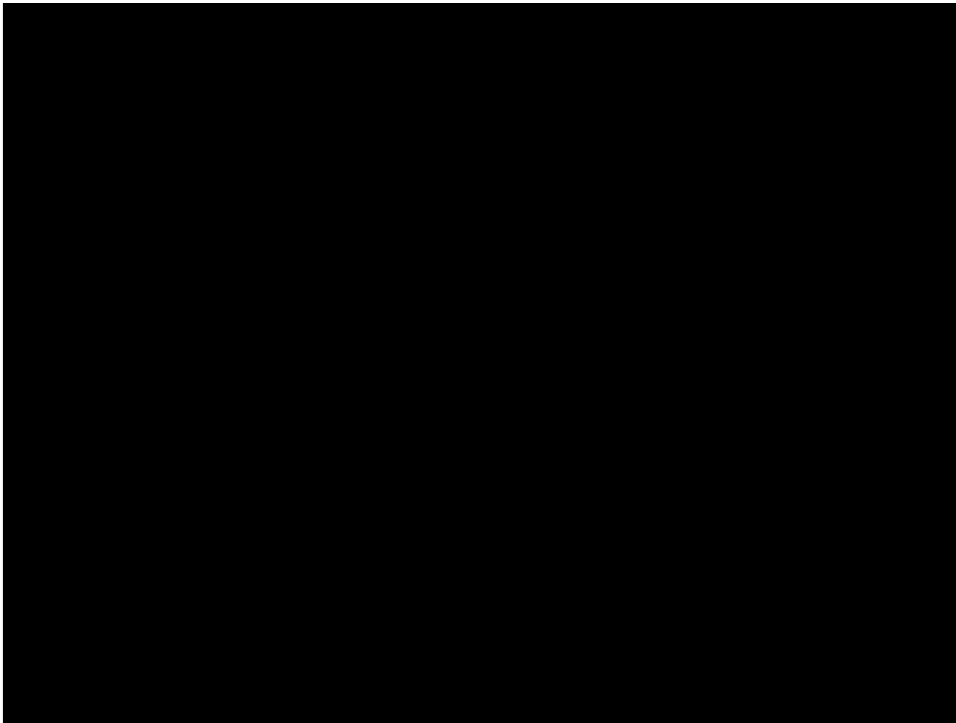
- LRT is a benefit - Downtown should be a focal point
- Competing theme:
 - Desire for transit and pedestrian focused environment vs preserving vehicle access
- Safety and security – enhance at LRT stops and in adjacent areas
- LRT stop locations – balance interests when selecting the specific location



**Downtown LRT Connector
Draft Concept Plan**

www.edmonton.ca/LRTProjects

The Potential of LRT
[Transit Oriented Development Video](#)





Downtown LRT Connector Draft Concept Plan

www.edmonton.ca/LRTProjects

Evaluation & Corridor Details

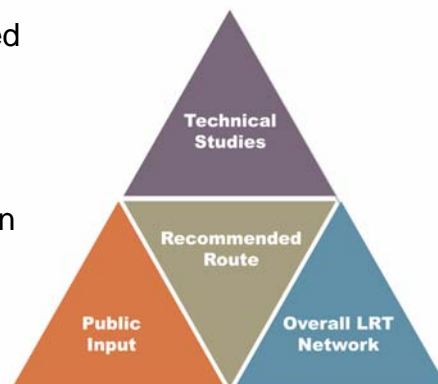


Critical Components

www.edmonton.ca/LRTProjects

Three components that impacted
the decisions about the
Downtown LRT Connection

- The overall LRT Network Plan
- Technical Analysis
- Public Input






Downtown LRT Connector

www.edmonton.ca/LRTProjects


Draft Concept Plan

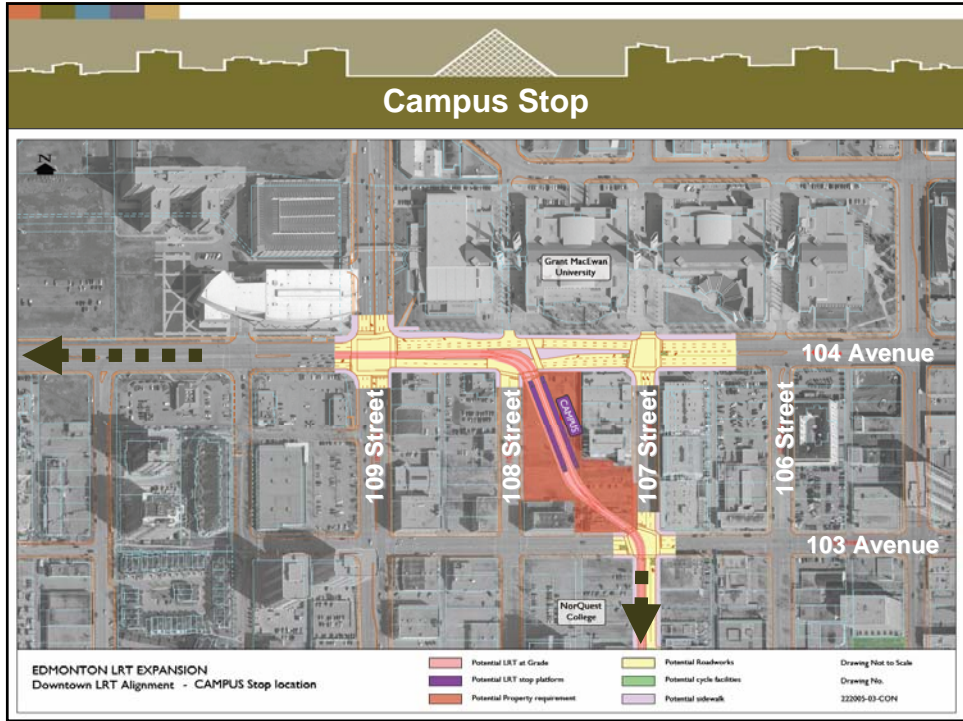


Benefits & Trade Offs

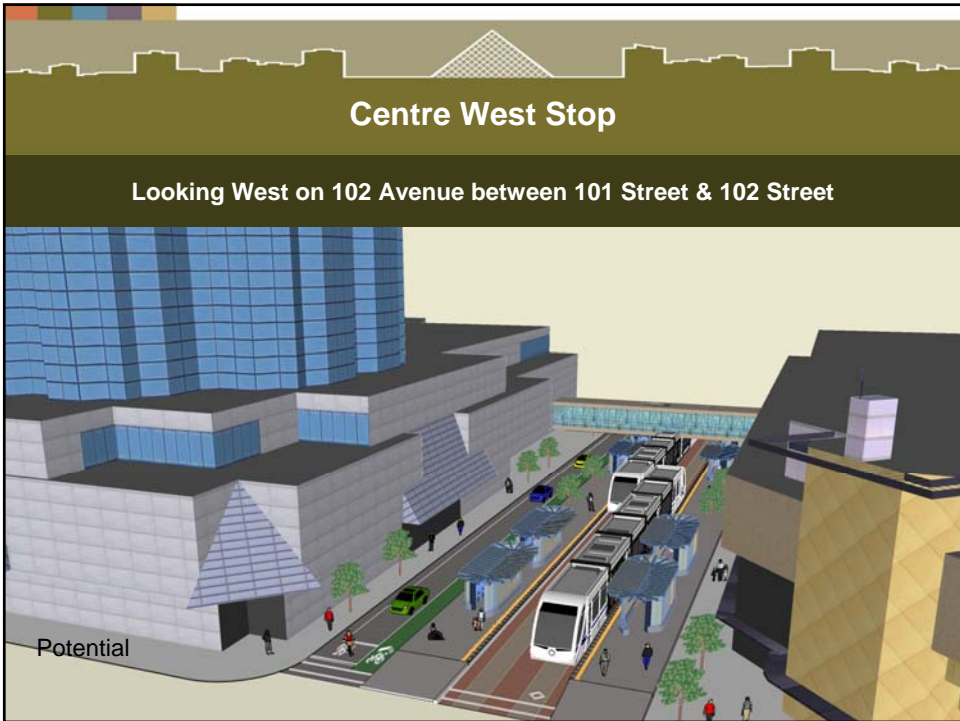
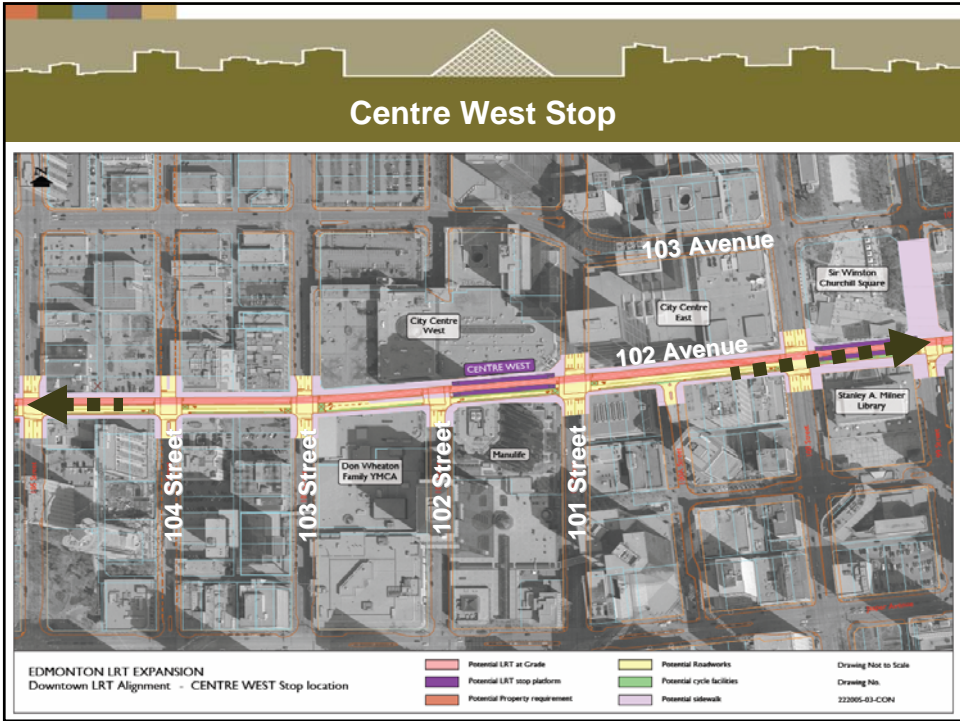
www.edmonton.ca/LRTProjects

- **Benefits and impacts exist**
- **Potential positive transportation and land use effects:**
 - Creating improved mobility options
 - Encouraging density and redevelopment
 - Creating active streets
 - Supporting pedestrian/bike connections and network
 - Implementing the vision of Capital City Downtown Plan
- **Minimize property acquisition by utilizing:**
 - Traffic lanes
 - On-street parking
 - Transit only corridors
- **Constrained Rights-of-Way**









Churchill Square Stop



EDMONTON LRT EXPANSION
Downtown LRT Alignment - CHURCHILL SQUARE Stop location

- Potential LRT at Grade
- Potential LRT stop platform
- Potential Property requirement

- Potential Roadworks
- Potential cycle facilities
- Potential sidewalk

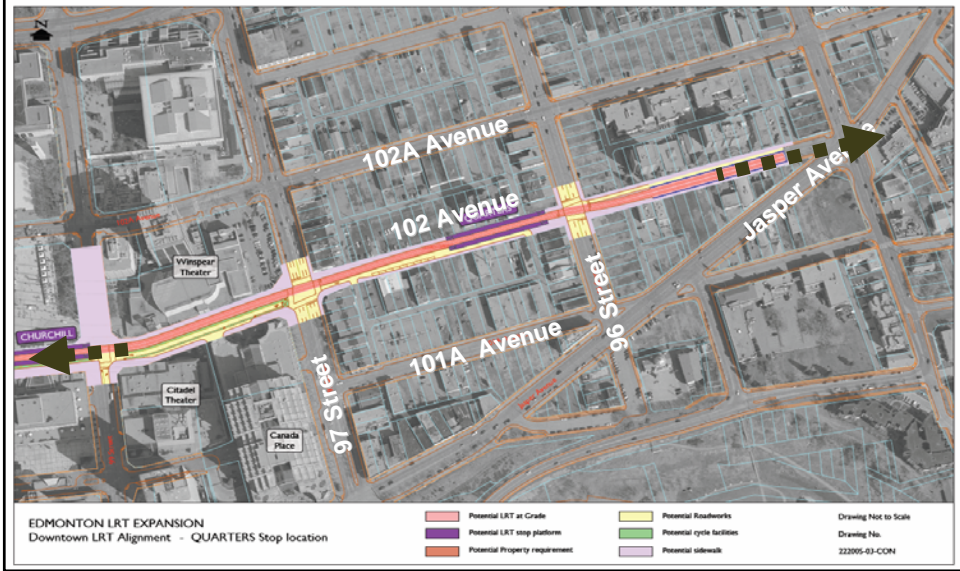
Drawing Not to Scale
Drawing No.
222005-03-CON

Churchill Square Stop

Looking West on 102 Avenue between 99 Street & 100 Street



Quarters Stop



Quarters Stop

Looking West on 102 Avenue between 96 Street & 97 Street



The Quarters Stop

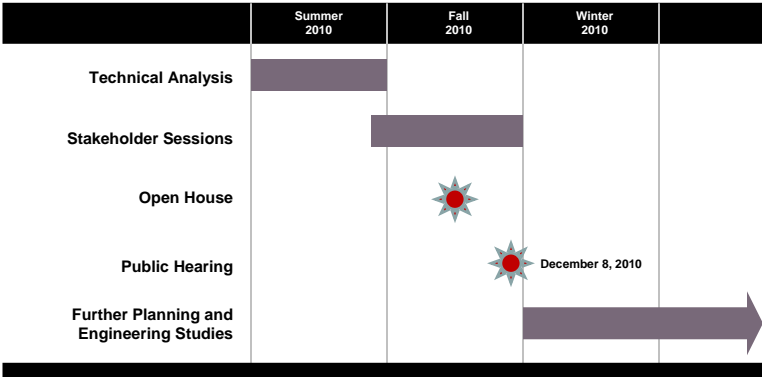


The Quarters Stop



Next Steps

www.edmonton.ca/LRTProjects



Downtown LRT Connector Draft Concept Plan

www.edmonton.ca/LRTProjects

Question and Answer Session





“Ground Rules”

www.edmonton.ca/LRTProjects

- 2 minutes for each participant to ask a question or make a comment. One follow-up question (1 minute)
- Will recognize 3 people for each round of questions; persons with microphones will go to those participants to ask their questions
- 3 rounds of questions
- Additional questions from same person not recognized until no new participants are wanting to ask questions
- Questions and responses will be recorded; please use microphones

THE CITY OF
Edmonton



Downtown LRT Draft Concept Plan

www.edmonton.ca/LRTProjects

THANK YOU

THE CITY OF
Edmonton