



RIBBON *of* GREEN

WHAT WE HEARD REPORT

Phase 4: Confirm Our Ribbon | February 2019

Prepared for	BACKGROUND	2
City of Edmonton	INTRODUCTION	3
	ENGAGEMENT TACTICS	5
	COMMUNICATION TACTICS	6
Prepared by	INDIGENOUS ENGAGEMENT	8
O2 Planning + Design Inc.	INDIGENOUS ENGAGEMENT	9
	PUBLIC ENGAGEMENT RESULTS	10
	FEEDBACK OVERVIEW	11
	SECTION 1: INTRODUCTION	12
	SECTION 2: SYSTEM-WIDE POLICIES	14
	SECTION 3: LAND MANAGEMENT CLASSIFICATIONS	22
	SECTION 4: PROGRAM GUIDANCE	26
	SECTION 5: IMPLEMENTATION	34
	SUMMARY	37
	NEXT STEPS	37
	APPENDIX A	38

Ribbon of Green SW + NE Plan Project Overview

The North Saskatchewan River Valley and Ravine System is the Edmonton region's greatest natural asset and a significant contributor to the quality of life of Edmontonians. Long established as a gathering place for Indigenous Nations and then fur traders, Edmontonians continue to value the conservation and celebration of the natural and cultural heritage of the River Valley.

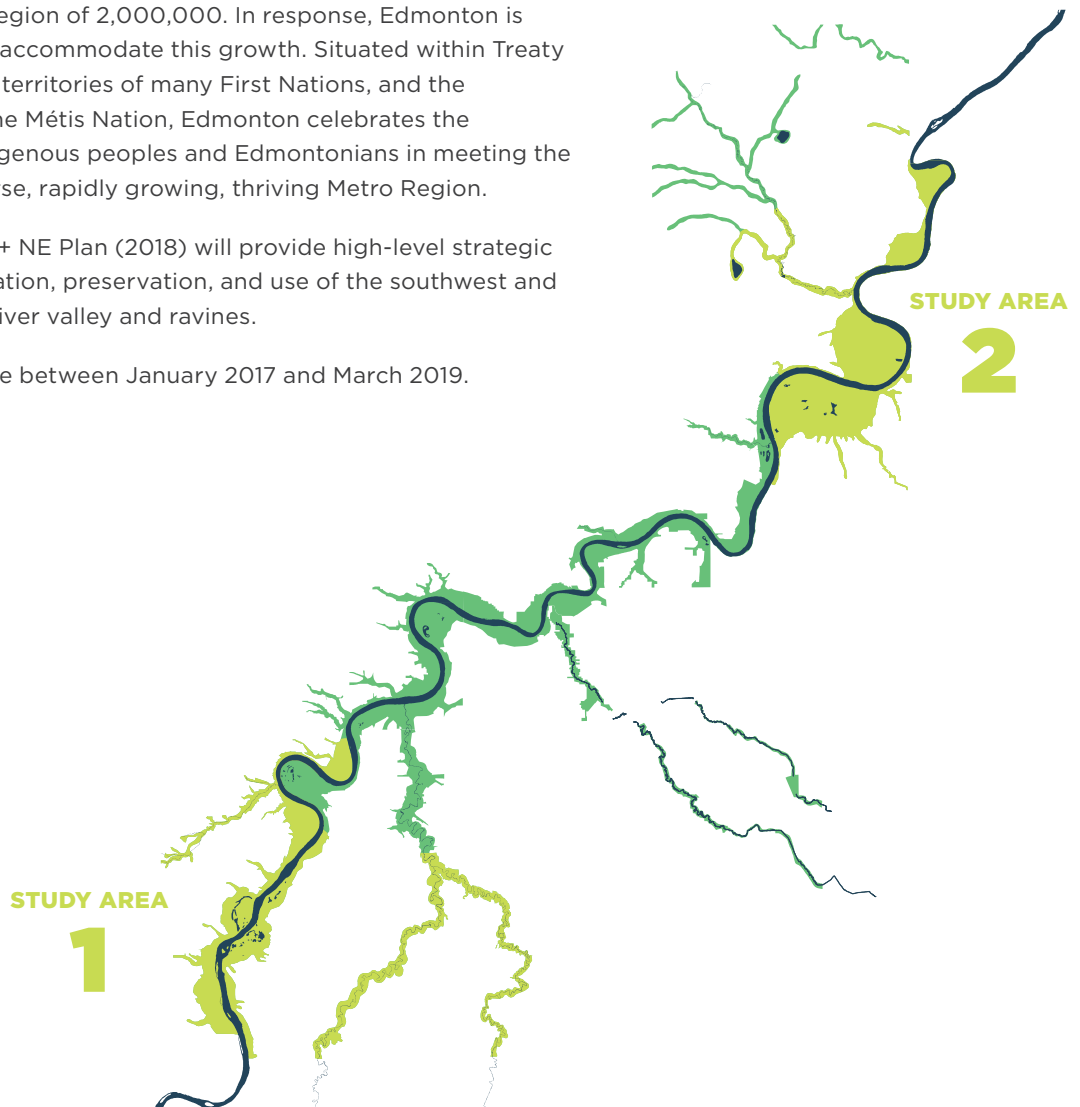
In 1990, The Ribbon of Green Concept Plan provided a foundation for the planning, management and prioritization of park development within the North Saskatchewan River Valley and Ravine System.

In 1992, The Ribbon of Green Master Plan divided the system into three different areas based on their priority for planning and infrastructure (identified as Priority 1, Priority 2 or Priority 3 areas). It laid out a decision-making framework for Priority 1 and 2 areas and guided the completion of master plans.

Since the completion of the original 1990 and 1992 Ribbon of Green plans, the city has grown dramatically. What was then a city of just over 600,000 is projected to service a region of 2,000,000. In response, Edmonton is building up, in and out to accommodate this growth. Situated within Treaty 6 territory, the traditional territories of many First Nations, and the traditional homeland of the Métis Nation, Edmonton celebrates the relationship between Indigenous peoples and Edmontonians in meeting the needs of a culturally diverse, rapidly growing, thriving Metro Region.

The Ribbon of Green SW + NE Plan (2018) will provide high-level strategic guidance for the conservation, preservation, and use of the southwest and northeast portion of the river valley and ravines.

This project is taking place between January 2017 and March 2019.



BACKGROUND



INTRODUCTION

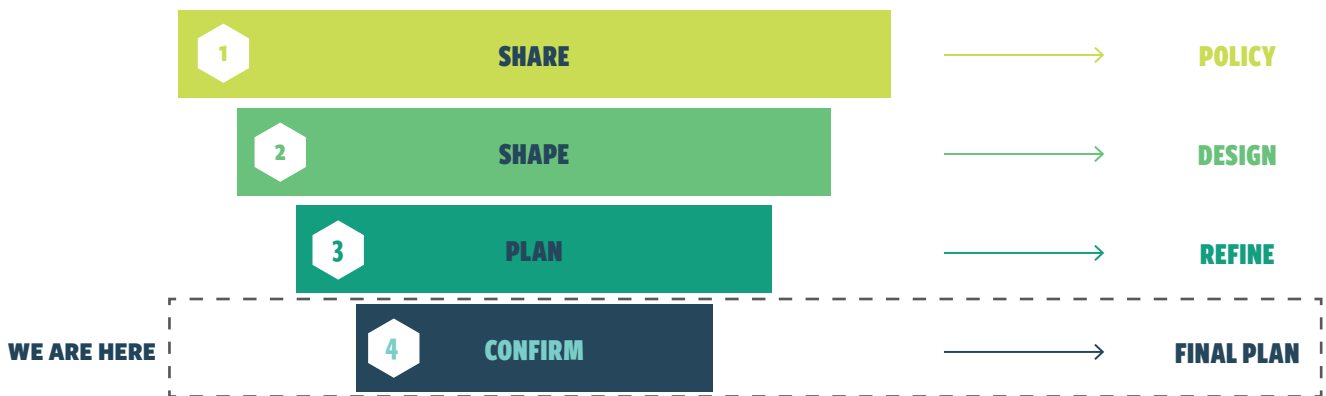
A robust public engagement results in stronger, better-informed projects. The City of Edmonton is committed to excellence in public engagement.

Due to the city-wide scale, regional impacts, and time frame of this project, setting up a network of interlinking engagement activities from the project start was fundamental to the project's success. Specifically, there were four audience streams of engagement: stakeholders, public (online and in-person), and Indigenous. These different groups have been engaged at various times throughout the four active engagement phases of the project.

The engagement process for Ribbon of Green SW + NE has taken place throughout 2017 and 2018, and was implemented through four distinct engagement phases, as shown below.

The fourth phase of public engagement for the Ribbon of Green SW + NE project took place in November 2018 to review the Draft Plan and collect final comments from stakeholders and the public. Feedback gathered during this phase will inform the final revisions made to the Ribbon of Green SW + NE Plan.

This report is intended to be a high-level summary of the ideas and comments that were collected during the fourth phase of engagement. While detailed comments and meeting minutes have not been included in this document, they have been recorded and will be used by the project team throughout the final revisions of the Plan.



ENGAGEMENT VALUES

The values below guide the engagement process for the public, stakeholders, and Indigenous communities.

Respect
Honesty
Openness
Inclusion
Cooperation
Learning

ENGAGEMENT PRINCIPLES

These principles will anchor our actions and thinking as we engage with the public, stakeholders, and Indigenous Peoples:

- > Be open, timely, and responsive
- > Listen and share stories to understand
- > Support informed engagement
- > Follow through on commitments

The Ribbon of Green SW + NE Public Engagement Plan is available at edmonton.ca/ribbonofgreen

The City of Edmonton Engagement Policy is available at edmonton.ca/documents/policiesdirectives/c593.pdf

PHASE 4 ENGAGEMENT GOALS

- > Present the Draft Ribbon of Green SW + NE Plan for feedback.
- > Gather feedback from stakeholders and the public that will guide the final revisions to the draft plan and fine tune the final document.

PHASE 4 ENGAGEMENT APPROACH

The public and stakeholder engagement events and activities were structured around the draft Plan's sections to share information about the work to date and to collect feedback to inform the final phase of the Ribbon of Green SW + NE process:

- > **Vision + Principles:** A vision statement and set of principles to guide the planning of each study area.
- > **System-wide Policies:** A collection of policies that will direct the planning, design, and management of the River Valley and Ravine System.
- > **Land Management Classifications:** Classification descriptions to define the physical site conditions, operations, activities, and amenities throughout the entire River Valley and Ravine System and policies associated with each classification.
- > **Program Guidance:** An initial spatial direction for each reach within the study areas to function as a starting point for future site specific planning.
- > **Implementation:** Outlines the principles and actions that direct Ribbon of Green SW + NE implementation.

PHASE 4 ENGAGEMENT RESULTS

Stakeholders and the public (both in-person and online) were asked to respond to the open-ended comment prompts of "I support this because..." and/or "I have concerns with...". This survey structure was designed to give participants the opportunity to provide unrestricted feedback on the Plan sections or sub-sections of their choice.

This feedback, summarized by Plan section and sub-section, has been organized in this report as:

- > **Common Findings:** Recurring comments, ideas, and feedback; and
- > **Tensions:** Identified contrasting comments or opinions between participants.

The feedback received will be incorporated into the final Ribbon of Green SW + NE Plan.

ENGAGEMENT TACTICS

OPEN HOUSES

Two open houses were held at community recreation centres in close proximity to each study area and one open house was held at Edmonton Tower as part of the Engage Edmonton event.

Downtown Public Drop-In Session

November 15 | 3-7pm

Edmonton Tower - Main Floor Lobby



Northeast Public Drop-in Session

November 21 | 3-7pm

Clareview Recreation Centre - Lobby
3804 139 Avenue



Southeast Public Drop-in Session

November 22 | 3-7pm

Terwillegar Community Recreation Centre - Amphitheatre
2051 Leger Road NW



PUBLIC ONLINE SURVEY

An online survey link was posted on the Ribbon of Green SW + NE project website and provided through the Insight Community for the public to provide their feedback.



STAKEHOLDER APPRECIATION EVENT

Continuing on from their involvement in the first three phases of engagement, representatives from multiple organizations were invited to a stakeholder appreciation event. The goal of the event was to thank stakeholders for the time and energy they dedicated to the project, share a presentation of the revised Draft Ribbon of Green SW + NE Plan, and provide an opportunity for stakeholder input through the same format as the open houses. In total, representatives from 14 diverse organizations attended this event, for the list of organizations that were in attendance, please see Appendix A.

November 14 | 5:30-8pm

Edmonton Valley Zoo - Otter Room



Total Participants

COMMUNICATION TACTICS

The City of Edmonton employed various communication methods, both in print and online, to reach and inform as many residents as possible about the Ribbon of Green SW + NE engagement events and opportunities to provide feedback on the Draft Plan. The engagement was advertised through traditional methods and social media as outlined below:



Newsletters

- > Ribbon of Green SW + NE
- > Edmonton Federation of Community Leagues
- > Change for Climate
- > Food in the City
- > Park Bench
- > Great City News (Internal Newsletter)



Twitter

- > @CityofEdmonton — 4 tweets



Facebook

- > City of Edmonton — 4 posts



City of Edmonton Website

- > Ribbon of Green SW + NE Project Website
- > Communications and Engagement Events Calendar



Road Signs

- > 7 total
 - > 2 North
 - > 2 Central
 - > 3 South



Media

- > Public service announcement
- > 1 ad in the Edmonton Journal
- > 1 ad in the Edmonton Metro



Posters

- > Posted in all City of Edmonton Recreation Centres and Public Libraries



Postcards

- > Distributed at Public Libraries



Landowner Mail-Outs

- > 3,469 mail-outs were sent, inviting landowners in, and adjacent to the study areas to the stakeholder open houses.



INDIGENOUS ENGAGEMENT



INDIGENOUS ENGAGEMENT

INDIGENOUS WORKSHOPS

Beginning in October 2016, the City reached out to Indigenous communities for initial engagement. These meetings revealed five main topics of consideration, summarized in the first *Indigenous Bulletin* that was sent to all participating and non-participating Indigenous communities in January 2017.

Indigenous Workshops were held in Summer 2017, the results of which were summarized in the second *Indigenous Bulletin*, and sent to all participating and non-participating Indigenous communities in January 2018. This information was also distributed to organizations and interested attendees at Edmonton's Indigenous Peoples Festival.

The project team continued to provide opportunities throughout the project to collaborate, understand how issues and concerns could be addressed, and to incorporate input into the policies and recommendations. The third *Indigenous Bulletin*, outlining policies relevant to the seven themes identified through Indigenous engagement (see below), was sent out to communities in October 2018.

THEMES IDENTIFIED THROUGH WORKSHOPS

The seven main themes identified through these engagements greatly influenced the development of the Ribbon of Green SW + NE Plan.

Recognition of Indigenous Peoples: Indigenous history, culture and traditional knowledge contributes to the diversity of Edmonton and helps improve the quality of life for all Edmontonians.

Significant Cultural/Historical Sites: Future park development and construction should plan for the possibility of finding cultural sites, such as burial sites, archaeological remains, and modified/marked trees.

Gathering Places: Edmonton needs Indigenous gathering places to practice ceremonies, celebrate, teach and promote culture.

Protection of Natural Areas: Rivers, streams, wetlands and natural areas are environmentally/culturally significant to Indigenous people.

Environmental Stewardship: Care of the environment (e.g. monitoring, management, restoration, environmental awareness and education) is important and should involve Indigenous peoples.

Traditional Plants: There are many natural and undeveloped areas throughout Edmonton that contain traditional plants that are important and sacred to Indigenous peoples and should be protected.

Engagement: Indigenous communities are interested in early, meaningful in-person and on-site engagement, to share traditional knowledge, identify issues and concerns and collaborate on possible recommendations.

The City of Edmonton is committed to keeping Indigenous communities informed and engaged when projects intersect with Indigenous interests and concerns.

PUBLIC ENGAGEMENT RESULTS



FEEDBACK OVERVIEW

Phase 4: Confirm Our Ribbon Structure:

This phase of engagement was structured to give participants the opportunity to provide feedback on Sections 2-5 of the Draft Ribbon of Green SW + NE Plan. Section 1: Introduction, was not included in the online survey, as the Vision and Principles had already been confirmed through the previous phases of engagement.

The open-ended comment prompts of “I support this because...” and “I have concerns with...” were designed to allow participants the give unrestricted feedback on the Plan sections or sub-sections of their choice. The opportunity to provide general Draft Plan comments, or comments on Section 1: Introduction, were not included in the online survey, however if participants wished to submit a comment, these were collected at the in-person engagement sessions and via email.

Overall Summary of Feedback:

Over 60% of all comments received per section were in response to the “I support this because...” prompt, indicating an overall positive level of support for the Draft

Plan. The comments provided for the sections and sub-sections of the Draft Plan were summarized into **Common Findings** and **Tensions**.

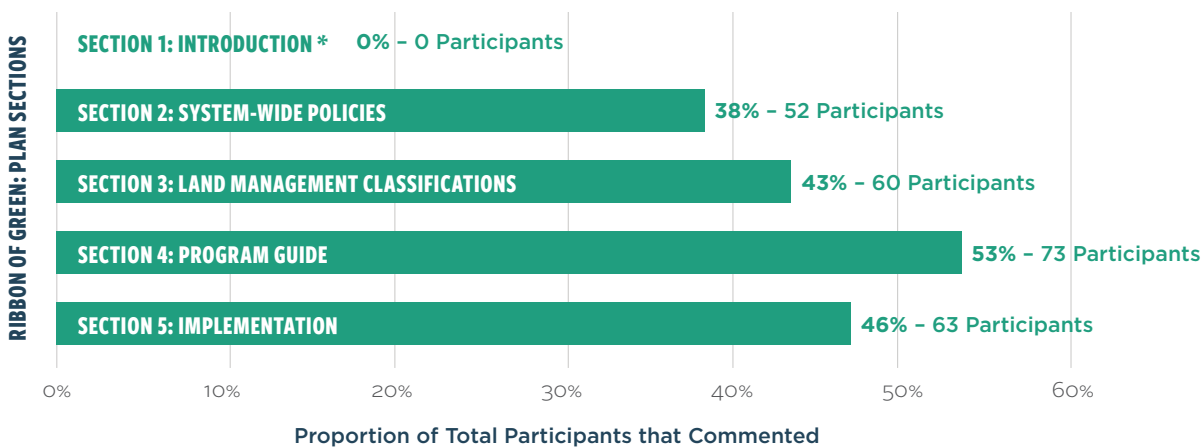
Recurring **Common Findings** include the desire to:

- › Prioritize ecological integrity and naturalization.
- › Promote connectivity and accessibility.
- › Provide a variety of low-impact recreational uses, supported by a range of trail types.

Recurring **Tensions** include:

- › Prioritizing ecological integrity throughout the System versus enabling recreational use.
- › Upgrading and expanding the trail network throughout the System to provide greater access versus restricting access and limiting trail network expansion to ensure ecologically sensitive areas are protected.
- › The level of access permitted throughout the System, with emphasis on restricting motor vehicle access, including restricting motorized boats on the river.

Online Survey Participation by Plan Section:



The graph above illustrates the number of participants who responded to each Plan section. **Section 4: Program Guidance**, received the highest level of participation with 53% of the survey participants commenting on this section. **Section 5: Implementation** received the second highest levels of participation with 46%, followed by **Section 3: Land Management Classifications** with 43%.

Section 2: System-wide Policies, received the lowest level of participation with only 38% of survey participants providing commentary.

***Section 1: Introduction**, was not included in the online survey as the Vision and Principles were confirmed in the previous phases of engagement.

SECTION 1: INTRODUCTION

The Introduction provides background information and outlines the Vision and Principles for the Ribbon of Green SW + NE. The Vision and Principles were shaped and confirmed through previous phases of engagement, and informed the development of the remaining plan sections. For this reason, participants were presented with Section 1: Introduction for background information only and were not asked to provide any additional feedback during this phase of engagement. However, comments that were received at the open house, at the stakeholder event and through email, are summarized in this report. The feedback received in Phase 4 will be incorporated into the refinement of the final Ribbon of Green SW + NE Plan.

VISION + PRINCIPLES

VISION

The North Saskatchewan River Valley and Ravine System is a protected, connected landscape that supports ecological resilience and promotes healthy living through opportunities for recreation, active transportation, and gathering in the tranquility of nature.

PRINCIPLES

- » The **ecological system** will be protected, connected, restored, and managed to preserve its integrity and resilience, and to minimize the impact of human use.
- » New and/or expanded **facilities, infrastructure, and programming** will provide opportunities for users to gather and recreate in nature, or provide essential urban services, and will be located and designed to minimize the environmental impact.
- » A **continuous trail system** and access points will connect neighbourhoods, the city, and the region to the River Valley and Ravine System and provide safe and accessible opportunities for recreation and active transportation.
- » Through **engagement and partnerships**, meaningful opportunities will be provided to contribute to the planning, design, and management of the River Valley and Ravine System.
- » The **natural and cultural heritage** of the River Valley and Ravine System will shape the places, experiences, and connections within it. Natural and historical sites, features and landscapes will be protected and, where appropriate, interpreted.
- » **Traditional uses** will be recognized and supported throughout the River Valley and Ravine System, and Communities will be meaningfully engaged in the planning, management, and use of the system.

INTRODUCTION: FEEDBACK OVERVIEW

The vast majority of the comments received related to this section were supportive. In particular, participants liked the Vision and Principles, reaffirming this section of the Plan.

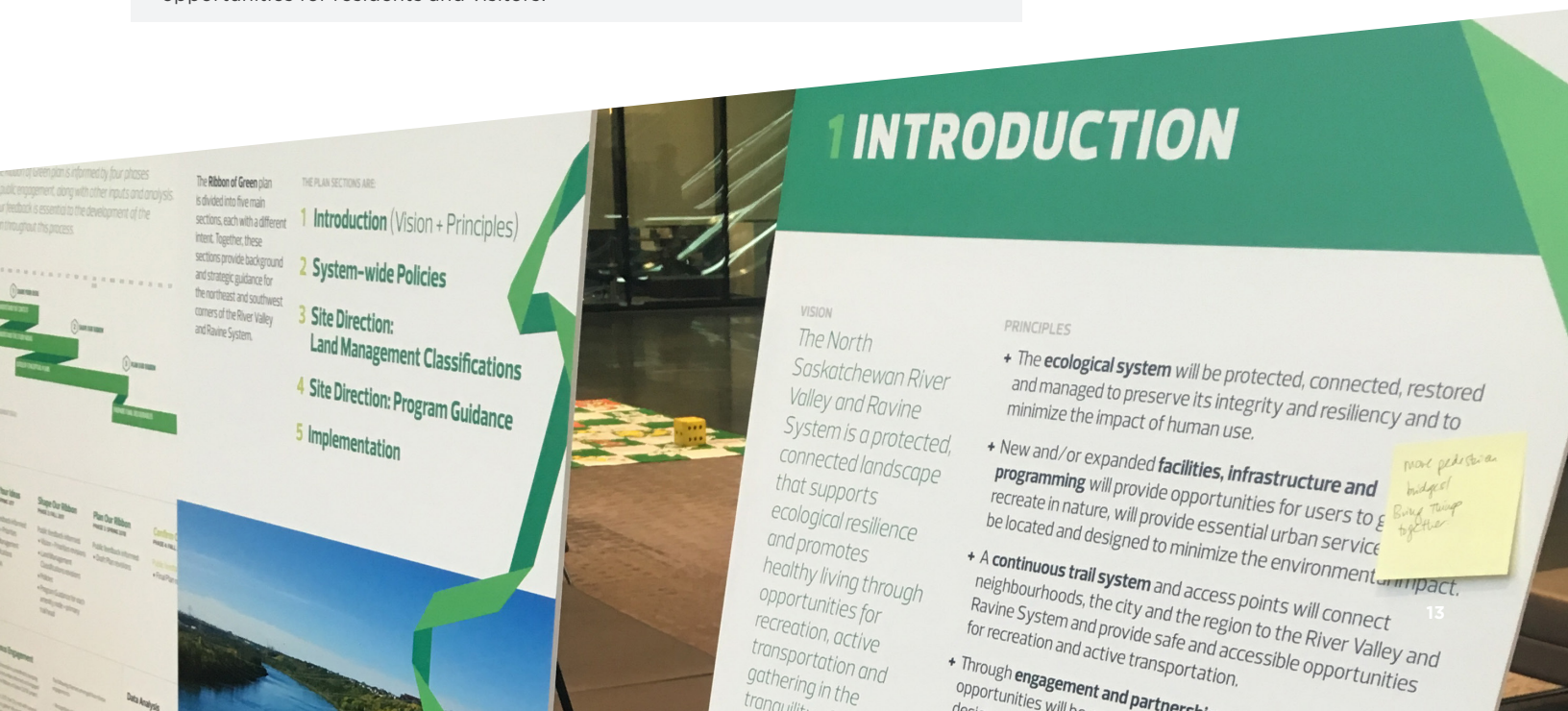
Common Findings:

- 1 Variety of Trails + Connectivity:** The most frequent comments discussed the proposed trail system, focusing on the variety of trail types the system would include, and the increased connectivity they would provide to surrounding communities.
- 2 Naturalize + Preserve Ecological Integrity:** The second common finding focused on the need for the preservation of the ecological integrity of the River Valley and Ravine System, maintaining natural biodiversity, and naturalization of the landscape as much as possible. Participants expressed that the maintenance of the Ribbon of Green SW + NE as a natural system should be a top priority for the Plan.
- 3 River Access + "River as a Trail":** The third common finding highlighted the desire to increase river access and use. Many participants wanted an increased focus to be placed on the potential "river as a trail," for both recreational purposes and as a means of improving connectivity in the North Saskatchewan River Valley.

“Culturally the river was the ‘trail system.’ Maybe we need to enhance the use of the river.”

Tensions:

Some stakeholders and the public prefer ecological preservation to be the highest priority of the Plan with little or no new recreational development, while others view the SW+NE areas of the System as an opportunity to expand recreational opportunities for residents and visitors.



SECTION 2: SYSTEM-WIDE POLICIES

System-wide Policies contain policies to guide decision making and direct the planning, design, and management of the northeast and southwest areas within the River Valley and Ravine System. These System-wide Policies and key directions respect and implement the Strategic Directions outlined in Breathe: Edmonton's Green Network Strategy for these portions of the River Valley and Ravine System. The direction here ensures a consistent approach is applied throughout the system.

During this phase of engagement participants were asked to provide feedback on the ten System-wide policy sub-sections. The common findings and tensions per policy sub-section are outlined in this report. The feedback received in Phase 4 will be incorporated into the refinement of the Final Plan policies.



SYSTEM-WIDE POLICIES OVERVIEW

General Feedback:

Overall, participants were supportive of the System-wide Policies. This section had the highest number of total comments among the four Plan sections.

Common themes that arose from the comments include:

- › Naturalization and preservation of ecological integrity as a top priority.
- › Promote accessibility and connectivity, including the provision and clarity of wayfinding.
- › Include a variety of recreational uses.
- › Enhance Indigenous cultural representation through engagement and educational opportunities.
- › Increase the provision of public washroom facilities.

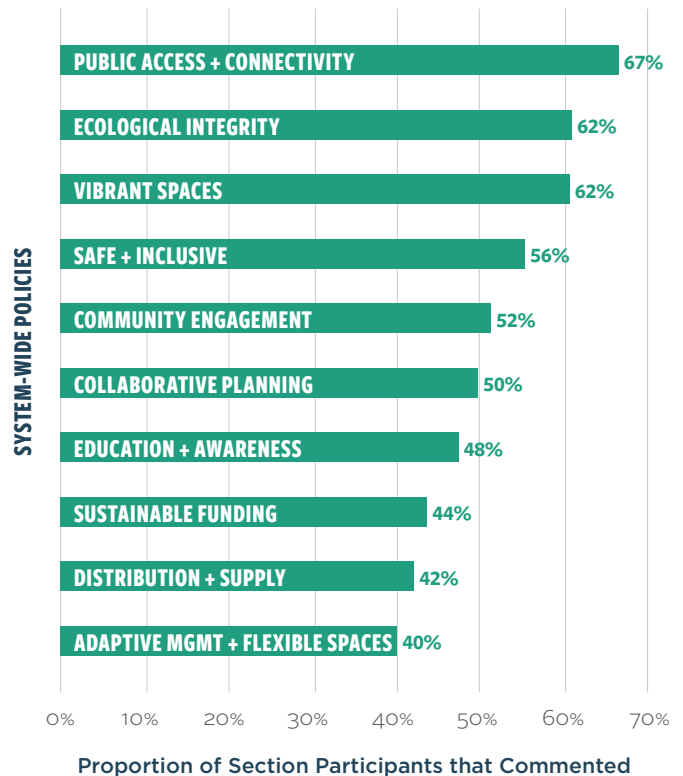
Tensions:

- › The most frequent tension that arose from the System-wide policies comments was between support for recreational use and access in areas, and restricting access and activities - including new trails, infrastructure, commercial activity and industrial/urban service uses - to maintain ecological integrity

System-wide Policies - Online Participation:

The graph to the right shows the percentage of Section 2 participants that left a comment under each sub-section. Public Access and Connectivity received the most attention from online survey participants, with 67% providing commentary on these policies. Ecological Integrity and Vibrant Spaces were the second most popular policies, with 62% participation, and the Safe and Inclusive sub-section received the third highest level of participation at 56%.

”
“The river valley should be accessible for everyone, there are many places that can be accessed by all! I love how the trails are maintained for cyclists, even in the winter.”
“I appreciate the effort to make the entire valley a network. It would be neat to emphasize this as a part of education on the valley as wildlife corridor.”



PUBLIC ACCESS + CONNECTIVITY

Public Access + Connectivity received the highest amount of online participation of all the System-wide Policies, and tied with Ecological Integrity for the highest number of comments, indicating that this set of policies is a top priority. Participants agreed public access and connectivity are necessary, however, the majority of the concerned comments highlighted that public access and connectivity should be established in a manner that is as low-impact as possible, prioritizing the maintenance of ecological integrity.

Common Findings:

1	Accessibility Strengthen Ecological Integrity + Naturalize: Comments suggested a desire for an accessible network that supports ecological integrity, emphasizing that areas should be kept as natural as possible to support a healthy ecosystem.
2	Connectivity + Trail Type Variety: Participants supported the establishment of a connected trail network comprised of a variety of trail types to allow the network to be as strong and as accessible as possible, without being dominated by pavement.
3	River Access + River as Trail: Comments highlighted the importance of increased river access and support for the pursuance of the “river as a trail.”

Tensions:

The level of public access and connectivity throughout the System emerged as a tension. Some participants indicated that improved accessibility (including greater vehicle access) will enable a much larger group of people to access the River Valley and Ravine System, while others provided feedback that there should be tougher restrictions on public access to protect ecological integrity, such as limiting or restricting motorized vehicle and boat access.

ECOLOGICAL INTEGRITY

In general, participants support the Ecological Integrity policies. This set of policies received the second highest proportion of online participation of the System-wide Policies, and tied with Public Access + Connectivity for the highest number of comments, indicating that Ecological Integrity is a top priority for Edmontonians. The results suggest that maintaining ecological integrity and the inclusion of low-impact recreational uses are important considerations for the Ribbon of Green SW + NE Plan.

Common Findings:

1	Strengthen Ecological Integrity + Naturalize: The recognition that the preservation and naturalization of the study areas should be a top priority for the Ribbon of Green SW + NE Plan.
2	Overall Support: Included comments such as “I like all aspects” and “I appreciate the goal of keeping natural spaces natural and avoiding development in the area.”
3	Low Impact Recreational Activities: Participants acknowledged the need to include low-impact recreational uses, while recognizing the need to balance use with ecological integrity.

Tensions:

Ensuring the maintenance of ecological integrity while also enabling the inclusion of some recreational uses within the System is a tension that emerged during all four phases of public engagement. While the majority of participants agree that ecological integrity is important, there is disagreement on how environmental protection should impact public access, connectivity, and compatible uses, facilities, and infrastructure within the System.

VIBRANT SPACES

Vibrant Spaces received the second highest number of comments, and the second highest levels of participation of the System-wide Policies. Comments were fairly evenly split between “I support this because...” and “I have concerns with...” Overall, the establishment of vibrant spaces was supported, but concerns were raised about how it would be implemented. These comments indicated a need to ensure the balance between increased programming and development while maintaining ecological integrity.

Common Findings:

1	Balance Ecological Integrity with Recreational Growth: Participants expressed a need to balance the promotion of ecological integrity and increased naturalization with recreational growth and the provision of a variety of recreational activities and amenities within the System.
2	Increased Programming: Comments expressed support for the promotion of increased programming within the System, and cautioned that increased programming should not be provided at the expense of ecological integrity.
3	Light Commercial Development: Comments indicated support for the inclusion of low-impact/light commercial development that does not negatively impact ecological integrity.

Tensions:

Feedback on the policies indicated that there are tensions regarding the type, amount, and location of development that should be permitted within the River Valley and Ravine System. However, most comments emphasized that any development should not negatively impact environmentally sensitive areas or wildlife corridor pinchpoints.

SAFE + INCLUSIVE

With the third highest level of online participation of the System-wide Policies, the comments indicate contrasting opinions. This contrast results in the need to balance increased accessibility and safety measures, with the maintenance of ecological integrity.

Common Findings:

1	Increase Accessibility: Increase the provision of accessible trails, amenity nodes, and river access for individuals of all ages and abilities.
2	Overcautious: In contrast, some comments indicated that many of the policies were overcautious. Participants demonstrated their understanding that natural areas have inherent risks and not all of these risks can or should be removed from a natural setting.
3	Maintain Naturalization: Along those lines, the preservation of ecological integrity and the naturalization of the river system was another top priority. Participants acknowledged that while accessibility was important, it should not be prioritized over ecological integrity.

Tensions:

Contrasting opinions arose regarding the appropriate level of accessibility and the required safety measures in natural settings, reiterating the need to consider ecological integrity during future site-specific planning.

COMMUNITY ENGAGEMENT

Overall, participants believe that the Community Engagement System-wide Policies are important considerations for the Ribbon of Green SW + NE Plan, and the majority of comments were in response to the “I support this because...” prompt. Comments of support emphasized techniques for engagement, and that community involvement would increase feelings of stewardship, which, in turn, would help support the other policies of the Plan. Comments of concern highlighted the importance of the inclusion and representation of Indigenous and marginalized groups in ongoing community engagement.

Common Findings:

1	Stewardship + Community Involvement: Community involvement, stewardship, inclusion, and education were the most common themes among comments. Many participants indicated that community and stakeholder involvement would increase a sense of ownership through stewardship, which would in turn increase the care and protection of environment.
2	Representation of Indigenous + Marginalized Groups: Participants appreciated the emphasis on Indigenous representation and encouraged the additional inclusion and representation of all marginalized groups and communities.
3	Increase Education + Awareness: Comments indicated that education and awareness were seen as important tools to grow understanding and stewardship of the River Valley and Ravine System.

Tensions:

To prevent future tension, participants highlighted the importance of ensuring the inclusion and representation from Indigenous communities, neighbours, stakeholders, and marginalized groups in future planning processes.

COLLABORATIVE PLANNING

The Collaborative Planning policies received no specific in-person or email commentary, and received the least total number of online comments of all the System-wide Policies. However, the online comments that were received did showcase a high level of support for this set of policies. The general support and low level of participation indicates an overall support for the policies, and potentially a more neutral stance on this direction for Edmontonians.

Common Findings:

1	Inclusion: The most prevalent finding highlighted an appreciation for the inclusion of the public and stakeholders in future planning processes. Overall, participants indicated that they valued being included in the process and felt that collaboration will produce the best results for the plan.
2	Promote Stewardship: Participants supported a collaborative approach to future planning in the River Valley and Ravine System. Comments indicated that collaboration can support stewardship.
3	Multiple Partnerships: Participants also highlighted the importance of establishing strategic alliances and partnerships to promote the Principles of the Plan (e.g. a continuous trail system, ecological system protection, and new or expanded facilities) and ensure that diverse perspectives are represented during implementation processes.

Tensions:

There was some disagreement between comments regarding the level and intent of collaboration. However, most people indicated that partnerships were advantageous if they aided in the betterment of the ecological health, enjoyment, and sustainability of the System overall.

EDUCATION + AWARENESS

Education and Awareness received the third highest level of support of all the System-wide policies, and the comments indicated an overall appreciation for these policies. Many of the supportive comments indicated that increased education and awareness is important, and will help support a healthy ecosystem. Concerns generally centred on the content of the education, emphasizing that these policies should be used to support the Ecological Integrity and Community Engagement policies.

Common Findings:

1	Overall Support: General comments of support included “Helps to create a connection to the park and nature from a young age” and “I support guided walks-to learn about plants and animals, indigenous traditions, geology...”
2	Indigenous Cultural Representation: The recognition of Indigenous culture, traditions, lands, and history was identified as a priority.
3	Ecological Integrity + Biodiversity: There was a desire that the educational content should focus on the importance of biodiversity and maintenance of ecological integrity.
4	Wayfinding + Signage: Context-appropriate wayfinding and signage was indicated as an important feature of these policies.

Tensions:

Feedback differed on the content of education and awareness messages, and the method of knowledge distribution - for example, through signage or QR codes on wayfinding.

SUSTAINABLE FUNDING

Sustainable Funding feedback resulted in a narrow majority of comments that responded to the “I have concerns with...” prompt. Many concerns centered on the need to establish a budget that clearly delineates the responsibility of roles and funding. Both supportive and comments of concern highlighted the importance of making use of and improving existing infrastructure before building new infrastructure and assets. Participants also highlighted that if this plan is a priority for the City, funds should be allocated to reflect that.

Common Findings:

1	Budget Development: Develop a transparent and logical budget with clearly defined roles and responsibilities
2	Multiple Funding Opportunities: Explore multiple unbiased funding opportunities to help alleviate concerns about who would be funding what projects.
3	Fees + Taxes: Create a clear delineation of expenses, responsibilities, fees, and taxes. Participants were especially concerned about potential incorporation of user fees and the impact of budget cuts on the allocation of funds, the project, and public taxes.

Tensions:

While no specific tensions emerged, comments highlighted the economic incentive to upgrade existing infrastructure before building new amenities, enabling the interim improvement of the System before expansion, as well as ensuring that no inappropriate incentives were included in the funding strategy.

DISTRIBUTION + SUPPLY

Distribution + Supply policies were well received by participants, and the comments indicated a general level of support. Some concerns regarding the concentration and location of park amenity spaces were brought up, emphasizing the placement of these spaces should be an important consideration in the development of a connected open space network.

Common Findings:

1	Overall Support: General comments of support included “Will help to prevent ‘deserts’ from occurring within the city” and “The criteria for selection of lands is reasonable and includes an aim to connect portions of the Ribbon of Green [SW + NE].”
2	Strengthen Ecological Integrity + Connectivity: Participants highlighted the need to naturalize and protect biodiversity, with the establishment of a well-connected open space network for both natural processes and human use.
3	Land Acquisition: Participants identified the importance of land acquisition to establish maximum network connectivity and ecological integrity.

Tensions:

Some participants noted the lack of public access and recreational uses in the SW compared to the NE, while others felt it was appropriate that the SW had more Preservation areas, given the ecological sensitivity of lands in that area.

ADAPTIVE MANAGEMENT + FLEXIBLE SPACES

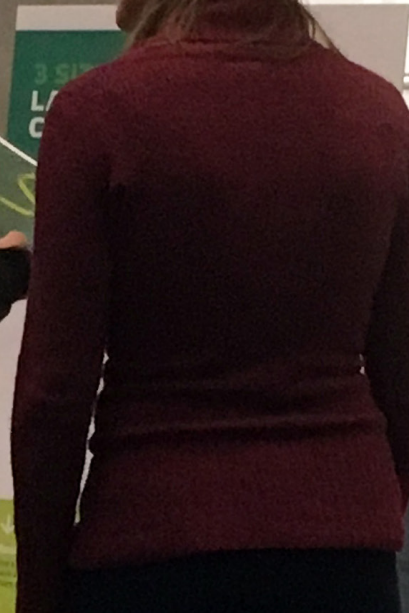
Adaptive Management + Flexible Spaces received the highest proportion of supportive comments, yet also received the lowest level of online participation for the System-wide Policies. This high proportion of support and low participation may indicate a general level of support or neutrality for the direction of these policies among Edmontonians.

Common Findings:

1	Overall Support: General comments of support included “There are so many possibilities, and such potential!”
2	Flexibility: Participants indicated a need for increased flexibility in management practices, as both the climate and the needs of Edmontonians change over time.
3	Monitoring, Evaluation + Long Term Use: An appreciation for the integration of monitoring and evaluation was noted, as well as the importance of maintaining a focus on long term use.

Tensions:

Some participants highlighted the need for the Plan to be more ambitious and impose higher environmental standards within the System, and therefore suggested the implementation of only carbon neutral or restorative infrastructure in the System.



2 SYSTEM-WIDE POLICIES

Section 2: System-wide Policies continue to guide the planning, design and management of the northeast and southeast waters within the River Valley watershed system. The following have emerged as consistent approaches to apply throughout the system.

Ecological Integrity

- Respecting the Range of Values
- Restoring the Balance of Stream
- Allowing Seasonal Flow
- Allowing Natural Impact
- Restoring and Maintaining
- Low-impact Harvesting
- Connecting Unconnected Waters
- Maintaining Ecological Health

Safe + Inclusive

- Improving Safety through Education
- Improving Safety through Design
- Improving Public Safety
- Lighting
- Improving Accessibility for All

Vibrant Spaces

- Expanding on River Safety and Public Spaces
- Connecting to the World System
- Contributing to the System
- Allowing Seasonal Flow
- Facilitating Non-motorized
- Incorporating Public Art
- Encouraging Recreational Uses

Education + Awareness

- Encouraging Collaborative, Traditional Use
- Promoting the River Valley Watershed System through Interpretation
- Public Awareness of Agricultural Resources in the System
- Promoting the Collaborative Approach
- Interpreting
- Interpreting Signs

Distribution + Supply

- Encouraging the Efficient Use
- Promoting the Efficient System
- Managing Heritage Cultural + Traditional Resources
- Encouraging Additional Urban Services + Services

Public Access + Connectivity

- Encouraging the System
- Encouraging + Encouraging
- Creating Trails
- Facilitating Trail Establishment
- Planning Trails
- Designing Trails
- Maintaining Trails
- Monitoring Trails
- Improving Trails + Planning
- Planning Promotional Design
- Parking

Adaptive Management + Flexible Spaces

- Management Practices
- Maintenance Standards
- Creating Flexible Systems

Community Engagement

- Encouraging the Public
- Collaborating with Interdisciplinary Commission

Collaborative Planning

- Planning
- Collaborative Planning

Sustainable Funding

- Sustainable Funding

Read Section 2
Use a consistent set of the following that applies to the entire River Valley System.

www.rivervalleywatershed.com

SECTION 3: LAND MANAGEMENT CLASSIFICATIONS

Land Management Classifications define the physical site conditions, operations, activities and amenities appropriate to locations within the River Valley and Ravine System. The River Valley and Ravine System is divided into three main Land Management Classifications to indicate the level of ecological protection and type of activities that are appropriate in each area.

In this phase of engagement, participants were asked to provide feedback on each of the three Land Management Classifications. The common findings and tensions per classification are summarized in this report.

PRESERVATION	CONSERVATION	ACTIVE/WORKING LANDSCAPES
<p>Protect the integrity of the natural environment and restore natural functioning with limited access and recreational opportunities.</p>	<p>Connect people to nature by allowing people to enjoy and appreciate the System while minimizing environmental impact and restoring ecological functioning, when possible.</p> <p>Trail-based Recreation: Facilitate a variety of trail experiences in harmony with the natural environment through a connected trail network.</p> <p>Natural Recreation: Rest, linger and enjoy nature.</p>	<p>Facilitate gathering and recreation within the System, recognize existing uses and encourage restoration.</p> <p>Intensive Recreation: Provide a wide-range of recreational opportunities tailored to the river valley and raving setting.</p> <p>Agriculture + Horticulture: Recognizing existing agricultural and horticultural uses.</p> <p>Urban Services + City-wide Attractions: Support city-wide attractions while acknowledging the importance of urban services to accommodate a growing city.</p>

LAND MANAGEMENT CLASSIFICATIONS OVERVIEW

General Feedback:

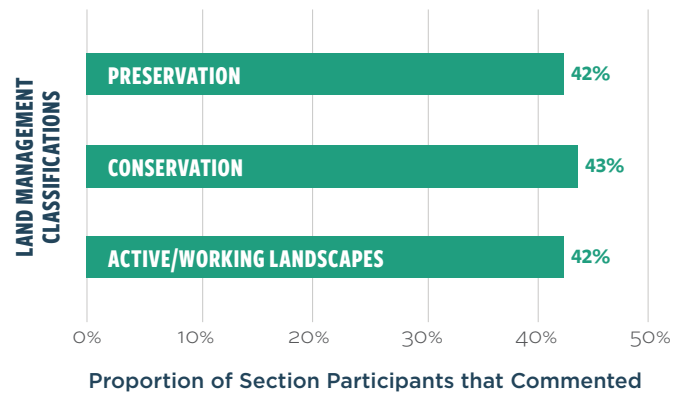
The majority of comments received for the Land Management Classifications section were in response to the “I support this because...” prompt. Common themes that arose for each classification included:

- › The need for preservation of natural integrity and natural rehabilitation of disturbed areas as a high priority.
- › The requirement for improved access to and throughout the System.
- › The desire for intentional placement of large facilities and amenities.
- › The wish for increased recreational uses, including using the river as a trail.

Common tensions arose regarding the level, type, and location of permitted access, and development within the System, and the impact this could have on the maintenance of ecological integrity.

Land Management Classification Online Participation:

The graph to the right shows the percentage of Land Management Classification participants that left a comment under each classification. The three Land Management Classifications were balanced in their levels of online survey participants.



”
“This is incredibly important to preserve biodiversity in the river valley and its ecological functions.”
“I understand that we would like to create areas where people can enjoy being in nature in a unique way, but again, ecological integrity needs to be the main priority.”



PRESERVATION

Overall, there is general support for the intent of the Preservation classification. The distinct separation of Preservation and Conservation into two classifications was appreciated by participants. However, some participants had concerns about the amount of land dedicated to Preservation and the resulting limited access to many areas of the River Valley and Ravine System.

Common Findings:

- 1 Restricted Access:** Participants expressed concerns about the limited access and recreation opportunities in many areas of the System, and how the dedication of land to preservation would restrict access even further.
- 2 Preserve + Maintain Ecological Integrity for Future Use:** Comments suggest that the public supports the need for dedicated Preservation areas and acknowledged the importance of preserving the ecological integrity of the River Valley and Ravine System now, and into the future.

Tensions:

Tensions arose regarding the level of access permitted within Preservation areas. Some participants indicated that too much access was permitted, threatening the ecological integrity of the area, while others thought access was too restrictive, reducing people's ability to enjoy the area.

CONSERVATION

The majority of participants expressed support for the Conservation classification. Participants supported the need for Conservation areas, appreciated the inclusion of low-impact recreational uses into these areas, and believed that education and awareness are important tools for consideration. Comments of both support and concern focused on the need to ensure that a healthy, natural, and ecologically intact River and Ravine System is a top priority.

Common Findings:

- 1 Naturalize + Strengthen Ecological Integrity:** Naturalizing areas and supporting ecological integrity is a top priority.
- 2 Education + Awareness:** Many participants recognized that low-impact recreational uses (Natural Recreation and Trail Based Recreation) presented good opportunities to incorporate education and increase awareness of the importance of Conservation in the System through methods such as appropriate signage and walking tours.
- 3 Trail Based Recreation:** Trail based recreation comments focused on the provision of a variety of trail types to facilitate accessibility. Comments also stressed the need to provide and maintain natural pathways throughout the Conservation areas, restricting the use of pavement where possible.

Tensions:

The Plan will need to address people's desire to promote and maintain ecological integrity while also increasing the provision of trail-based recreation opportunities. Additional tension arose regarding the question of restricting motorized vehicle access within Conservation areas and whether motorized boats should be permitted on the river or not.

ACTIVE / WORKING LANDSCAPES

Participants were generally supportive of the Active/Working Landscapes Classification. The idea that development could occur in these areas was both embraced and cautioned, indicating that clusters of low-impact development, with a recreational or environmental focus could be explored.

Common Findings:

- 1** **Location of “Large Impact” Facilities:** Most comments indicated the need to consolidate the location of large impact facilities (e.g. recreation facilities and greenhouses). Participants suggested concentrating these facility types as much as possible in order to minimize ecological impact.
- 2** **Recreational Uses:** Participants appreciated the variety of recreational uses permitted in this classification.
- 3** **Increased Public Access + River Access:** There is a desire for increased river access and overall public access, including the use of the river as a water trail.

Tensions:

Comments from the public and stakeholders reflected diverse views on the extent of land classified Active/Working Landscapes, the uses identified as compatible, and the development that may be permitted in the future within the Active/Working Landscapes classification. Some individuals emphasized that the Plan should be clear on intentions regarding development and emphasized that future development located in the System should not be permitted unless it is deemed “essential.”

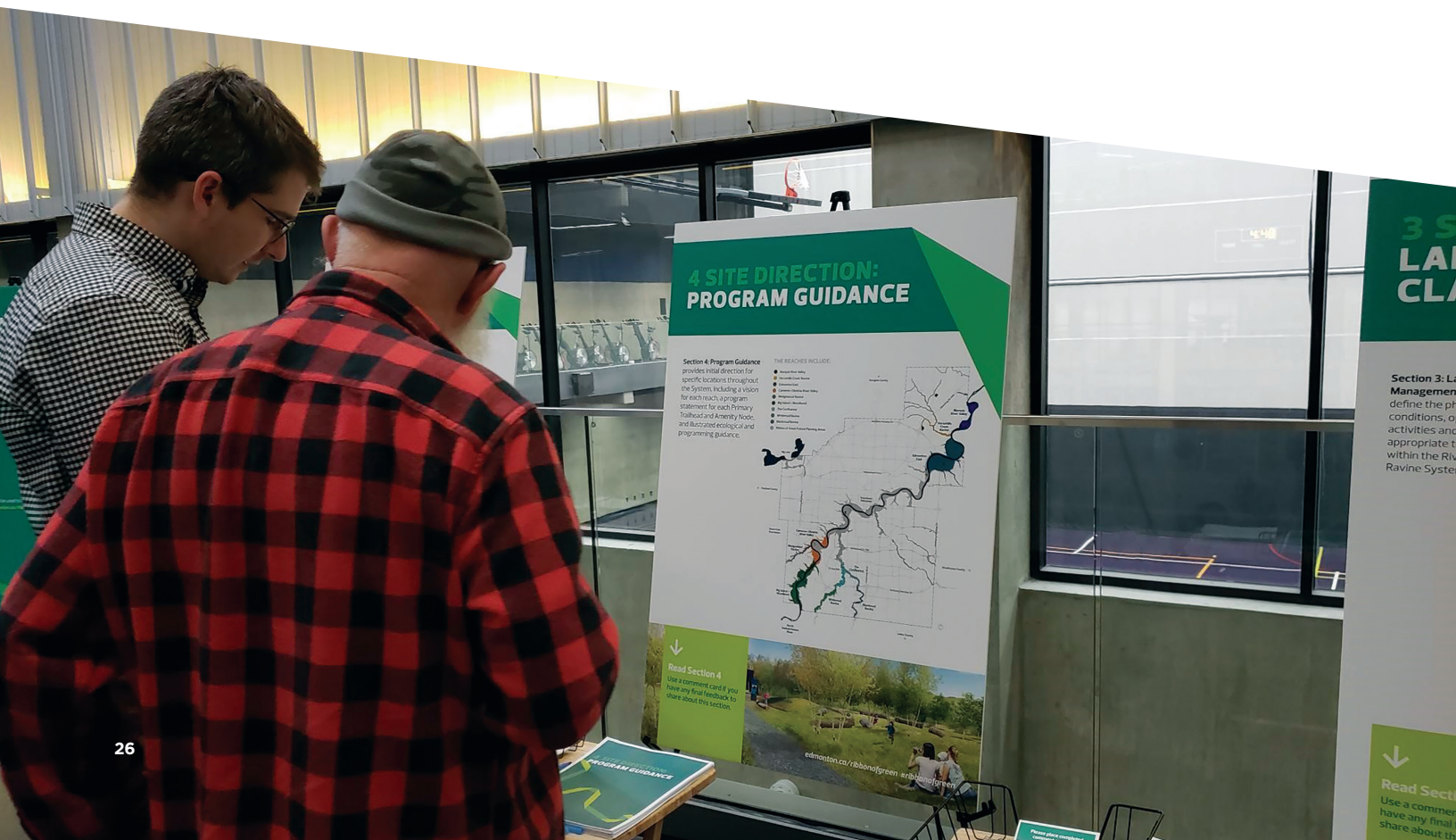


SECTION 4: PROGRAM GUIDANCE

Program Guidance is the starting point for future site-specific planning and design work at key locations. The guidance includes strategic direction on the current ecological network, areas for restoration, the trail network and access points, and programming areas and amenities. Phase 4 engagement participants were asked to provide feedback on the following reaches:

1. Cameron-Oleskiw River Valley Reach
2. Wedgewood Ravine Reach
3. Big Island + Woodbend Reach
4. The Confluence Reach
5. Whitemud Ravine Reach
6. Blackmud Ravine Reach
7. Marquis River Valley Reach
8. Horsehills Creek Ravine Reach
9. Edmonton East Reach

Common themes and tensions per each Reach are summarized in this report.



PROGRAM GUIDANCE OVERVIEW

General Feedback:

Overall, the majority of comments indicated support for the Program Guidance outlined in the Draft Ribbon of Green Plan SW + NE.

Common themes that arose included:

- › Naturalize and preserve ecological integrity, including the protection of wildlife.
- › Establish a connected and accessible trail network, that is comprised of a variety of trail types.
- › Establish and/or maintain river access and use.
- › Improve existing infrastructure.
- › Caution towards over development or commercialization.

Tensions included:

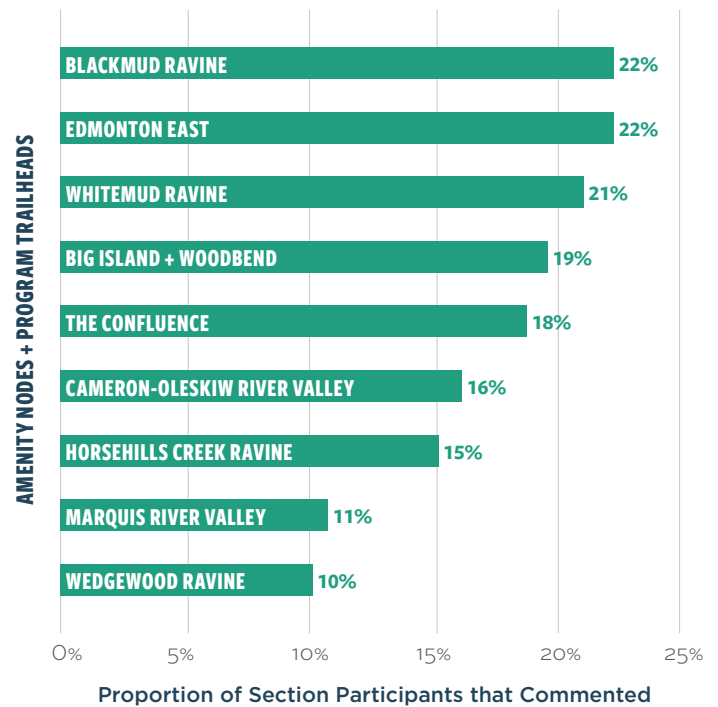
- › Ensuring ecological integrity is a priority versus accommodating the recreational goals of the reaches.
- › Disagreement regarding trail placement throughout the reaches, the density or prevalence of trails in an area, and whether the priority should be to first upgrade the existing network before expansion or vice versa.
- › Questions also arose in regard to whether motorized vehicles, including boats, should be permitted in certain areas of the System.

Online Engagement by Reach:

The graph to the right shows the percentage of Program Guidance participants that left a comment under each classification.

This section received the highest level of total participation in the online survey (53% of total survey participants commented on Section 4), however, the lower proportions of participation per amenity node and trailhead (10-22% of section participants), indicates that participants may have only commented on the reach that they were most interested in.

”The preservation of existing wetlands, waterways and habitats appears to be a priority- it is wonderful to have natural areas with some amenities to go to in our city, but it’s so important to make sure that preservation is top of mind.”



The Blackmud Ravine Reach and Edmonton East Reach had the highest levels of participation with 22%, followed closely by the Whitemud Ravine Reach with 21%. The Big Island and Woodbend Reach received the third highest level of participation at 19%, followed by the Confluence Reach at 18%.

BLACKMUD RAVINE REACH

Vision Statement:

Blackmud Ravine will become a restored ravine system, providing ecological services as well as opportunities for passive recreation and nature appreciation for the surrounding neighbourhoods. The previous histories of the site will be recognized through interpretive elements and community stewardship of the landscape.

The majority of the Blackmud Ravine Reach comments were supportive, and focused on the establishment of an expanded, connected trail network.

Common Findings:

1	Trail Network Expansion: The findings focused on support for the expansion, connection and variety of trails within the network.
2	Connectivity, Ravine Access + Trail Based Recreational Uses: Participants highlighted the importance of connectivity in the trail network expansion process. This expansion included increasing ravine access and the inclusion of multiple trail types to enable a variety of trail-based recreational uses to occur.

Tensions:

Tensions arose regarding expansion of the trail network, with the desire for thoughtful trail placement to reduce the development of surplus trails.

EDMONTON EAST REACH

Vision Statement:

Edmonton East will become an all-season regional destination, building upon the altered sites and conserving ecologically rich places to create opportunities for new activities and experiences in the River Valley. The area will be reclaimed as an ecological asset for the city, establishing wildlife habitat, productive landscapes, and a variety of educational and recreational opportunities unique to Edmonton's River Valley.

The Edmonton East Reach received supportive comments from the engagement, and tied with the Blackmud Ravine Reach for the highest participation levels for all the reaches.

Common Findings:

1	Increased Connectivity: Participants indicated a desire to increase trail network connectivity into and throughout Edmonton East.
2	Naturalize + Preserve Ecological Integrity: Participants emphasized their support for the preservation of ecological integrity and increased naturalization of the area.
3	Trail Based Recreation + Trail Type Variety: Participants expressed a desire for trail-based recreational opportunities, with a variety of trail types (paved to natural) for these recreational purposes.

Tensions:

No clear tensions emerged from the comments regarding the Edmonton East Reach.

WHITEMUD RAVINE REACH

Vision Statement:

Whitemud Ravine will be protected from future environmental disturbance and will remain an important wildlife corridor. The ravine will be restored wherever possible and ecological connections to the River Valley will be promoted in the surrounding landscape. Improved trail connections will immerse visitors in nature and provide access to trail-based interpretation of the surrounding land use history.

Participants were supportive of the direction of the vision and plan for the Whitemud Ravine and indicated that the proposed interventions are appropriate.

Common Findings:

1	General Comments of Support: The most common comments were of general support including: "I love it because it's in my backyard."
2	Trail Based Recreation: Participants were supportive of and excited by the trail-based recreational uses and opportunities proposed in the area.
3	Increase Connectivity + Access: Participants indicated a desire to promote the expansion of trail network connectivity and access.

Tensions:

Like the Blackmud Ravine Reach, people had different opinions about future trail placement and the desire for thoughtful trail placement to reduce the development of surplus trails.

BIG ISLAND + WOODBEND REACH

Vision Statement:

As a connected and accessible green network, Big Island + Woodbend will remain an essential link to regional ecological systems, including the Devon Dune Field. It will incorporate nature-focused recreation and river access for Edmonton's growing population. The integrity of this ecologically and culturally significant landscape will be protected and restored through design with nature, creating a sense of place and opportunities to celebrate the River Valley.

This reach received the highest total number of comments among all the reaches. Many participants were supportive of the direction of this reach, and the motivation to restore the area as a connected, natural amenity.

Common Findings:

1	Increase Variety of Recreational Uses + Access: Participants were enthusiastic about providing access to spaces for a variety of recreational uses, both passive and active, including the use of and access to the river.
2	Low Impact Recreation: Many participants were concerned that permissible recreational uses should be limited to low-impact recreation, to ensure the protection of ecological integrity and reduce the negative impacts associated with increased use.
3	Pedestrian Bridge: Participants also indicated their support for a pedestrian bridge to increase connection and access to the area.

Tensions:

Tensions arose in regard to the potential negative impact that increased human use and access might have on the ecological integrity of the area, versus the desire by others to have greater access to the area for recreational uses such as picnicking.

THE CONFLUENCE REACH

Vision Statement:

The Confluence will remain an essential area of protected wildlife habitat with improved trail connections from adjacent communities. As a culturally significant place, the confluence of Whitemud and Blackmud Creek will incorporate trail-based interpretive and recreational opportunities for visitors to enjoy the ravine system and learn about their layered history.

Participants support the development of natural recreational areas that protect the natural ecosystems of the Confluence. Participants would like to see a balance between increased trail connectivity that is respectful of maintaining ecological integrity within the reach.

Common Findings:

1	Naturalize + Preserve Ecological Integrity: Comments highlighted the desire to preserve the ecological integrity of the area, and maintain it in its original, natural state as much as possible.
2	Balance Increased Connectivity, Development + Ecological Integrity: Participants support increased trail connectivity, however some are concerned about the potential impacts of increased pedestrian traffic on the ecological integrity of the area. Therefore, some participants suggested limiting recreational development in sensitive natural environments.

Tensions:

Participants expressed the desire to ensure a preservation focus within the Reach; however, tensions arose about how to accommodate the desire for increased access and activity while maintaining ecological integrity. Some people indicated that tougher restrictions should be considered regarding the level, type, and location of development permitted in the Confluence Reach.

Section 4: Program Guidance

provides initial direction for specific locations throughout the System, including a vision for each reach, a program statement for each Primary Trailhead and Amenity Node, and illustrated ecological and programming guidance.

THE REACHES INCLUDE:

- Marquis River Valley
- Horsehills Creek Ravine
- Edmonton East
- Cameron-Oleskiw River Valley
- Wedgwood Ravine
- Big Island + Woodbend
- The Confluence
- Whitemud Ravine
- Blackmud Ravine
- Ribbon of Green Future Planning Areas



Build out trails all the way (Devonport Park) then develop parks based on use.

Expropriate and re-naturalize gate crossings via valleys!

Wants to see more wildlife.

Wants so that people don't have to live in homeless camps in the river valley!

Don't want to over-commercialize it.

Keep people away from areas of the river valley (natural)

CAMERON-OLESKIW RIVER VALLEY REACH

Vision Statement:

Cameron-Oleskiw River Valley is an essential wildlife corridor through the restoration of native ecological communities along the river edge. Trailheads will connect residents to natural, trail-based recreation opportunities while interpretative elements, enhanced viewpoints, and places to gather will offer opportunities to teach and learn about the history of the River Valley.

This reach received the lowest level of support of all the activity nodes and trailheads reported in this phase of engagement.

Common Findings:

1	E.L. Smith Water Treatment Plant Expansion: Many individuals expressed concerns regarding the proposed development - in particular, the proposed placement of the parking lot and the solar farm. Many did not agree that this expansion was necessary or appropriate at this location within the System.
2	Improve Access: Participants expressed concerns about the need to provide improved access to the River Valley through the existing golf courses, which they perceive as a barrier to ecological and recreational connectivity .
3	Provide a Variety of Trail Types: Participants appreciated the inclusion of a variety of trail types and would like to limit paving throughout natural areas.

Tensions:

Some people identified that they would like to see greater access (e.g. parking and associated trailhead facilities) in the valley bottom at the E.L. Smith Water Treatment Plant, while others wished for the area to remain as undisturbed as possible. There were a number of comments that disagreed with the proposed Water Treatment Plant solar farm, and expressed views that the area should be redesignated from Active/Working Landscapes to Preservation or Conservation.

HORSEHILLS CREEK RAVINE REACH

Vision Statement:

Horsehills Creek Ravine will be a restored wildlife corridor connecting to the northern reaches of the North Saskatchewan River in Edmonton. The ravine's unique ecological features will be protected from disturbance and will be appreciated by visitors using the interconnected trail system for passive, trail-based recreation. Minor amenities will support greater access into the ravine system. Interpretive elements will educate trail users on the history of the river, including its role in transportation and trade.

The majority of comments were supportive of the direction for this reach. Participants indicated a desire for an expanded trail network that builds from existing infrastructure, that is well connected, and that provides a choice of trail types.

Common Findings:

1	Increase Connectivity + Access: Participants support the increased connectivity and access to the ravine gained by the expansion of the trail network.
2	Provide a Variety of Trail Types: Participants emphasized the need for a variety of trail types to be included in the network, from paved to naturalized trails.
3	Infrastructure Improvements: Participants would also like to see infrastructure improvements take precedence over new expansion.

Tensions:

Tensions arose in response to the proposed trail placement and the perceived potential redundancy of new trails, specifically the potential negative impacts a proposed trail along the southern side of the ravine might impose on existing agricultural operations.

MARQUIS RIVER VALLEY REACH

Vision Statement:

The Marquis River Valley will become a place for community-building, nature preservation, and the re-establishment of ecological systems. The restoration of natural areas will improve wildlife connectivity in the northern reaches of Edmonton's River Valley, while the continued operations of agricultural land will support social enterprises and cultural programming. New trail connections to surrounding neighbourhoods will provide future residents with access to the River Valley and Ravine System for the passive enjoyment of nature.

Overall, participants are supportive of the direction of the Marquis River Valley Program Guide.

Common Findings:

1	Connection to Fort Saskatchewan: Participants support the connection to Fort Saskatchewan.
2	Trail Based Recreation: Participants emphasized their support for trail-based recreational opportunities.
3	Infrastructure Improvements + Variety of Trail Types: Comments indicated that improving the existing infrastructure and trail network to incorporate a variety of trail types into an improved network, are important considerations for this reach.

Tensions:

Comments for this Reach varied on either increasing trail access or restricting it. Some people indicated that a top-of-bank trail would impact private property, and others questioned the proposed location of an access trail and pedestrian bridge crossing the North Saskatchewan River, voicing concerns about potential impacts to the existing old growth forest.

WEDGEWOOD RAVINE REACH

Vision Statement:

Wedgewood Ravine is a protected ravine system providing a top-of-bank active transportation link to adjacent communities. Existing ecosystems, wildlife corridors, and geological features will be preserved, contributing to a unique nature experience.

This reach received the lowest number of comments from this phase of engagement. Comments were supportive of the direction and identified the importance of the expansion of the trail network.

Common Findings:

1	Increase Connectivity + Variety of Trail Types: Comments indicated support for the improvement and expansion of the trail network to include a variety of trail types (from natural to paved), resulting in increased connectivity throughout the reach.
2	Infrastructure Improvements First: Participants would like to see trail infrastructure upgraded before network expansion takes place.
3	Balance Access + Naturalization: Comments indicated a desire to balance the need to increase access with maintaining the area as naturally as possible.

Tensions:

Comments for this Reach differed on whether to prioritize upgrading the existing trail infrastructure first or to expand the network with new trails. New trail placement brought forward questions about whether trails along both sides of the ravine were necessary.



SECTION 5: IMPLEMENTATION

The Draft Plan concludes with an Implementation section that provides the City with direction to create an implementation plan to expand, monitor, evaluate, and realize the Ribbon of Green SW + NE over time. The Implementation Program addresses:

- › Implementation Actions
- › Program Guidance Implementation Principles
- › Plan Monitoring, Evaluation + Review

In this phase of engagement participants were asked to provide feedback on this section of the plan. The common findings and tensions are summarized in this report .



IMPLEMENTATION OVERVIEW

General Feedback

This section received the second highest level of participation of the four sections of the plan. Participants appreciated the long term lens of the Implementation plan, as well as the incorporation of monitoring and evaluation. Concerns tended to focus on clarifying the land acquisition strategy and establishing a realistic and firm timeline. Overall, participants were supportive of the direction of this section.



“Intelligent approach to development with regular review, evaluation and inclusion of feedback.”

“A specific timeline on completion of certain projects in this plan would be helpful.”

Common Findings:

1

Overall Support: Comments of general support included “Covers all areas of implementation I can think of,” and “I am glad to see there is a plan and that the Ribbon of Green [SW + NE] is not just some vision to do someday.”

2

Develop a Specific Timeline: The development of a specific, realistic, and carefully considered timeline was the second most common finding.

3

Monitoring + Evaluation: Participants also expressed their support for the monitoring and evaluation policies outlined in this section, however they would also like to see more specific commitments to periodic reporting, to help secure a commitment to public accountability for implementation actions taken.

Tensions:

Some participants noted concern regarding a proposed Land Acquisition Strategy, and how it would impact private landowners in the area.

Quotes from Phase 4 Public Engagement:

“Edmonton is a big, urban city. The many people living there need real nature close by, for balancing out their often stressful life. Being in undisturbed nature is a basic human need.”

“I always, always, always, think education and communication is the most important- community engagement in decision making will also provide a sense of ownership for the public, provide answers that may not have been heard before, and hopefully create lasting relationships of people who care deeply about preserving natural areas.”

“Only in preserving Ecological Integrity can we have the resource to provide education for generations- and also allow for the intrinsic value of each part of nature.”

“Recognizing and honouring indigenous groups is paramount to Reconciliation and the realization of a modern city.”

“It provides an opportunity for education...leading to awareness and appreciation of nature...this leads to people taking more care of the nature which they interact with. On an anthropocentric level, it's also great for humans to experience nature!”



SUMMARY

During this fourth and final phase of engagement the public and stakeholders provided feedback on the System-wide Policies, Land Management Classifications, Program Guidance, and Implementation sections of the Ribbon of Green SW + NE Draft Plan.

Participants expressed that low-impact recreational uses, river access, and water activities, along with supporting amenities are highly desired. Additionally, participants indicated overwhelming support for a trail network that is well connected to surrounding neighbourhoods, accessible whenever feasible, and comprised of a variety of trail types (from non-paved to paved trails). Tension arose in regard to how the trail network would take shape, including the location of the trails, and the level of access permitted throughout the System. While access to the Ribbon of Green SW + NE areas is highly desired, similar to previous engagements, the recurring message received throughout this phase of engagement identified the preservation of ecological integrity as the highest priority for the River Valley and Ravine System.

These findings will be incorporated into the refinement of the final Ribbon of Green SW + NE Plan.

Thank you for your participation!

NEXT STEPS

The feedback from Phase 4: Confirm our Ribbon will be used to revise and finalize the Plan. The final Ribbon of Green SW + NE Plan will be presented to Council in 2019.

Sign up for the newsletter at edmonton.ca/ribbonofgreen to receive project updates, including:

- › Final Ribbon of Green Plan SW + NE
- › Technical Report
- › Presentation of the plan to Council in 2019

APPENDIX A

LIST OF STAKEHOLDERS ENGAGED IN PHASE 4

The following organizations were formally engaged throughout the course of the fourth phase of engagement.

Stakeholder Appreciation Event:

- › Alberta Recreation & Parks Association
- › Canadian Federation of University Women
- › Canadian Parks & Wilderness Society
- › Ceyana Canoe Club
- › Edmonton Heritage Council
- › Edmonton Mountain Bike Alliance
- › Edmonton Native Plant Group
- › Edmonton Nature Club
- › Horse Hill Berry Farm
- › North Saskatchewan River Valley Conservation Society
- › River Valley Conservation Coalition
- › Sierra Club of Canada
- › Twin Brooks Community League

Stakeholder Meetings:

- › North Saskatchewan River Valley Conservation Society
- › Various Private Landowners
- › Government of Alberta
- › River Valley Conservation Coalition
- › Edmonton Heritage Council
- › Edmonton Mountain Bike Alliance
- › Edmonton and Area Land Trust
- › University of Alberta

