

101 Avenue **Streetscape**

Welcome!

You are invited to learn about the 101 Avenue Streetscape project, share your feedback on the vision for the corridor and help us understand issues and opportunities in the project area. Your ideas and input will help shape the development of the concept plan for the 101 Avenue Streetscape project.

Learn more by going to: edmonton.ca/101AvenueStreetscape

SHARE YOUR VOICE
SHAPE OUR CITY

Edmonton

ADVISE

Project Overview

The 101 Avenue Streetscape aims to enhance the public space along the corridor, between 50 Street and 84 Street, providing a vibrant area that is accessible and a destination for the surrounding communities. Building on the work done for the Corridor Study completed in 2017, concept planning is the next step towards implementing the 101 Avenue Streetscape.

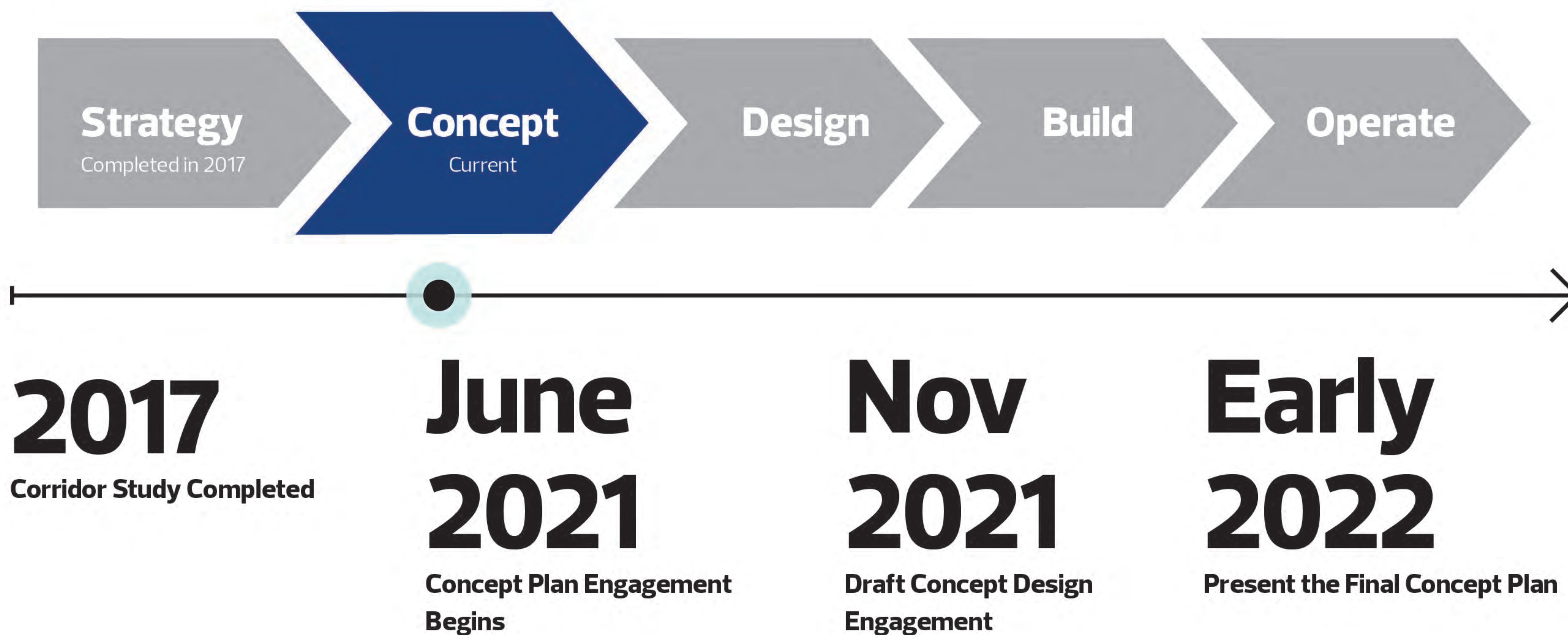


ADVISE

SHARE YOUR VOICE
SHAPE OUR CITY

Edmonton

Project **Timeline**



ADVISE

We are in the Concept Phase, the next phases are not currently funded.

Learn more by going to: edmonton.ca/101AvenueStreetscape

SHARE YOUR VOICE
SHAPE OUR CITY

Edmonton

Public Engagement **Spectrum**



The public engagement spectrum is a tool that explains the level of influence the public has when they participate in City of Edmonton public engagement activities. The level of influence for this phase of the project is **ADVISE**.

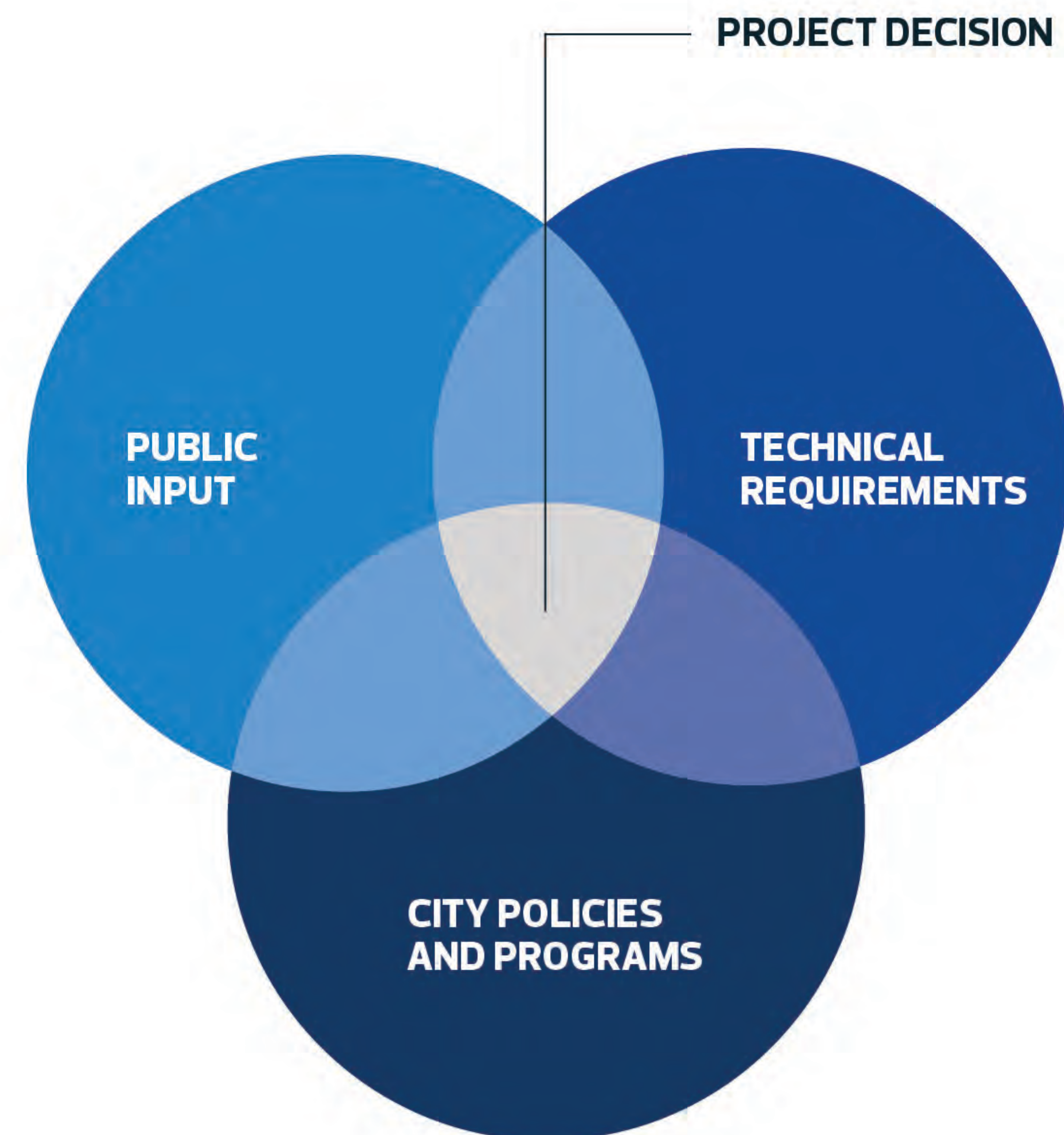
SHARE YOUR VOICE
SHAPE OUR CITY

Edmonton

How Decisions Are Made

As part of the decision-making process decisions are made based on three components:

- + **Technical requirements** – what infrastructure best meets the area's needs, where it can fit and what impacts it will have to the immediate and surrounding area
- + **City policies and programs** – how City initiatives and activities are implemented
- + **Public input** – local knowledge of the community



ADVISE

SHARE YOUR VOICE
SHAPE OUR CITY

Edmonton

Moving from **Corridor Study** to **Concept Plan**

Corridor Study

Defined the vision for an active, vibrant and unique sense of place. Identified connections to network of transportation options and destinations.

Concept Plan

Refines themes from the Corridor Study vision to set alignments and locations for roadway, bikeway, landscaping, and accesses. Provides groundwork to secure funding for preliminary design, detailed design and construction.

Corridor Study (2017)

- + Defined the vision for the project
- + Identified development options for land use, street design and community programming
- + Identified infrastructure changes including reduced vehicle lanes, improved pedestrian crossings and sidewalks, physically separated bicycle lanes, and improved lighting focused on people who walk and bike

Concept Plan (Current)

- + More technical in nature
- + Explores how existing planned arterial road renewal can deliver desired community outcomes and broader City strategic goals
- + Sets alignments for vehicle travel lanes, accesses, bikeway route and connection points, pedestrian sidewalks and crossings, and spaces for landscaping

ADVISE

SHARE YOUR VOICE
SHAPE OUR CITY

Edmonton

Vision for **101 Avenue**

From the 101 Avenue Corridor Study:

101 Avenue:



is a cherished community space



connects people and destinations



has a vibrant street life, a variety of businesses, beautiful public spaces, and great transit options



is where people safely walk and bike to explore, shop and visit

ADVISE

SHARE YOUR VOICE
SHAPE OUR CITY

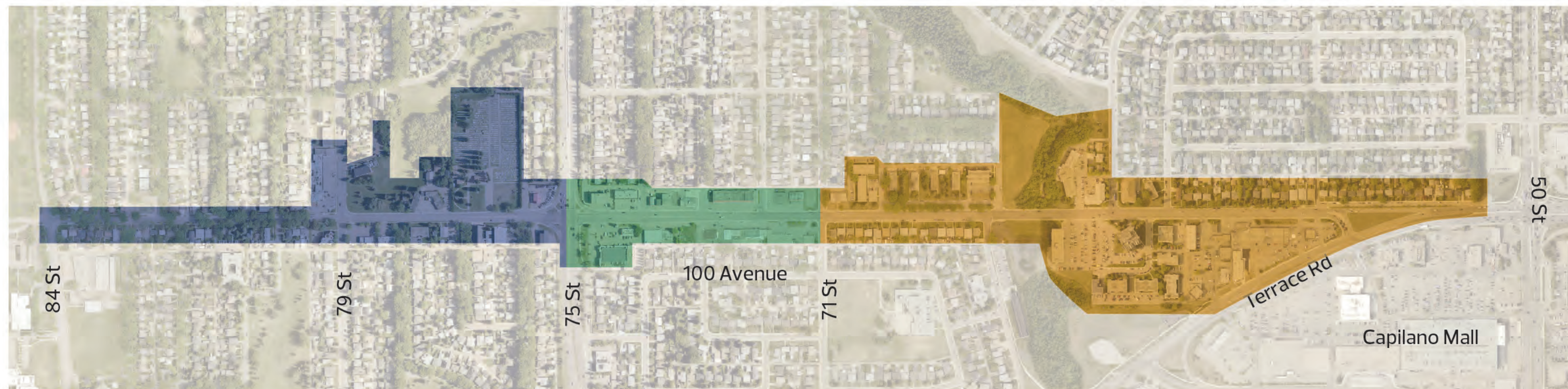
Edmonton

Existing Conditions

101 Avenue is characterized by vehicle-oriented design, with parking lots in front of residential and commercial properties and a mix of land-uses set back from the street.

The 101 Avenue project area can be organized into three sections:

1. **West:** 84 Street to 75 Street
2. **Central:** 75 Street to 71 Street
3. **East:** 71 Street to 50 Street

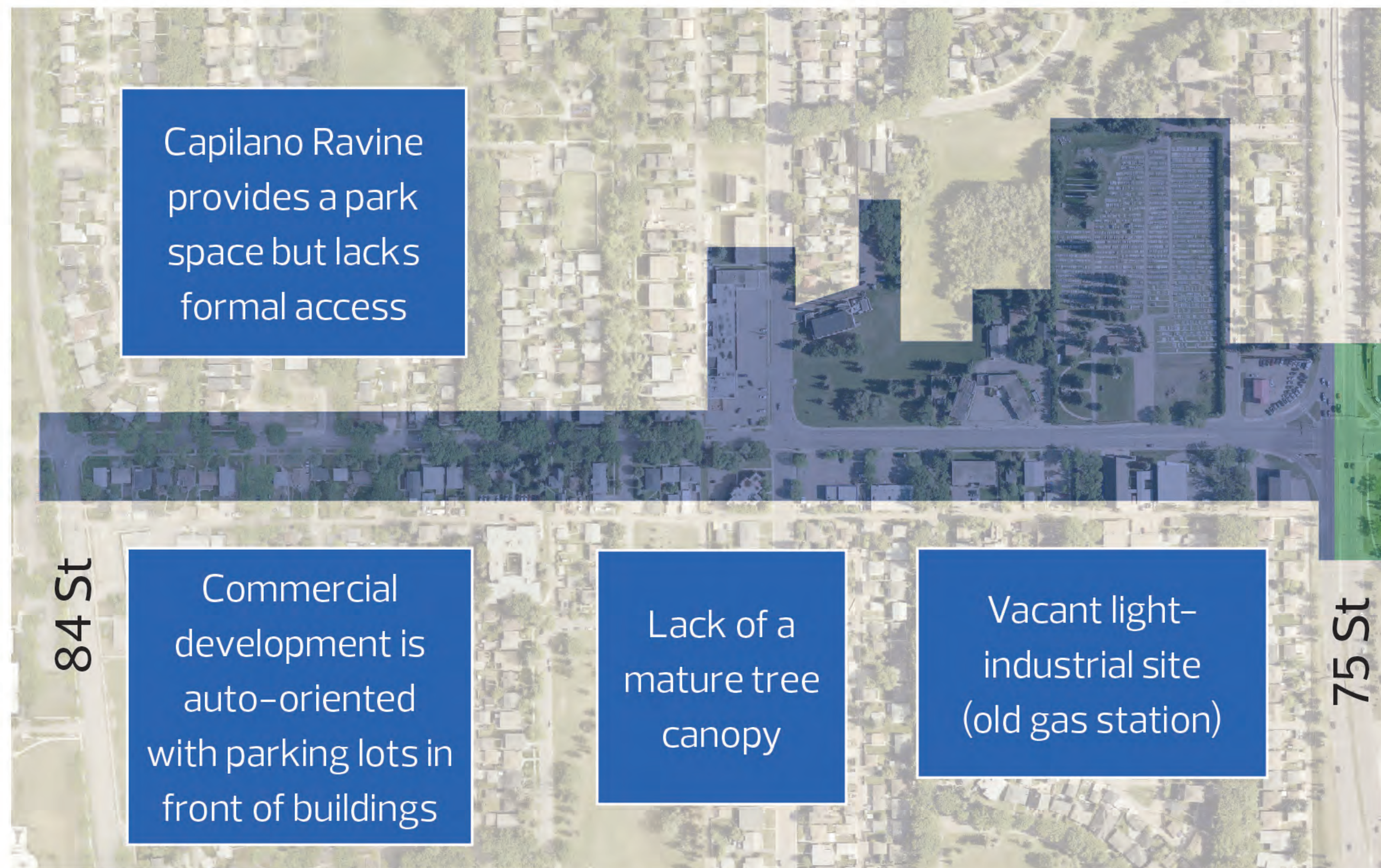


ADVISE

SHARE YOUR VOICE
SHAPE OUR CITY

Edmonton

West 101 Avenue Characteristics



Recommendations from Corridor Study

- + Use curb ramps at intersections, enhanced markings or crossing lights at cross walks, reduce crossing distances and provide a direct and clear path of travel for people who walk
- + Provide pedestrian lighting
- + Provide protected bike lanes on 101 Avenue, and connect bike lanes to bicycle network
- + Provide a buffer where existing parking lots are beside sidewalks

ADVISE

SHARE YOUR VOICE
SHAPE OUR CITY

Edmonton

Central 101 Avenue Characteristics



Recommendations from Corridor Study

- + Reduced vehicle lanes
- + Use curb ramps at intersections, enhanced markings or crossing lights at cross walks, reduce crossing distances and provide a direct and clear path of travel for people who walk
- + Provide pedestrian lighting
- + Provide protected bike lanes on 101 Avenue and increased bike parking as part of new developments
- + Ensure parking supports area businesses and residential development, add angle parking where possible, include parking underground or in the rear with redevelopment
- + Minimize the number of driveways crossing the sidewalks

ADVISE

SHARE YOUR VOICE
SHAPE OUR CITY

Edmonton

East 101 Avenue Characteristics



ADVISE

Recommendations from Corridor Study

- + Use curb ramps at intersections, enhanced markings or crossing lights at cross walks, reduce crossing distances and provide a direct and clear path of travel for people who walk
- + Provide protected bike lanes on 101 Avenue and active mode connections to Fulton and Capilano Ravines
- + Provide pedestrian lighting
- + Reduced vehicle lanes
- + Close westbound access to 101 Avenue from Terrace Road/50 Street

SHARE YOUR VOICE
SHAPE OUR CITY

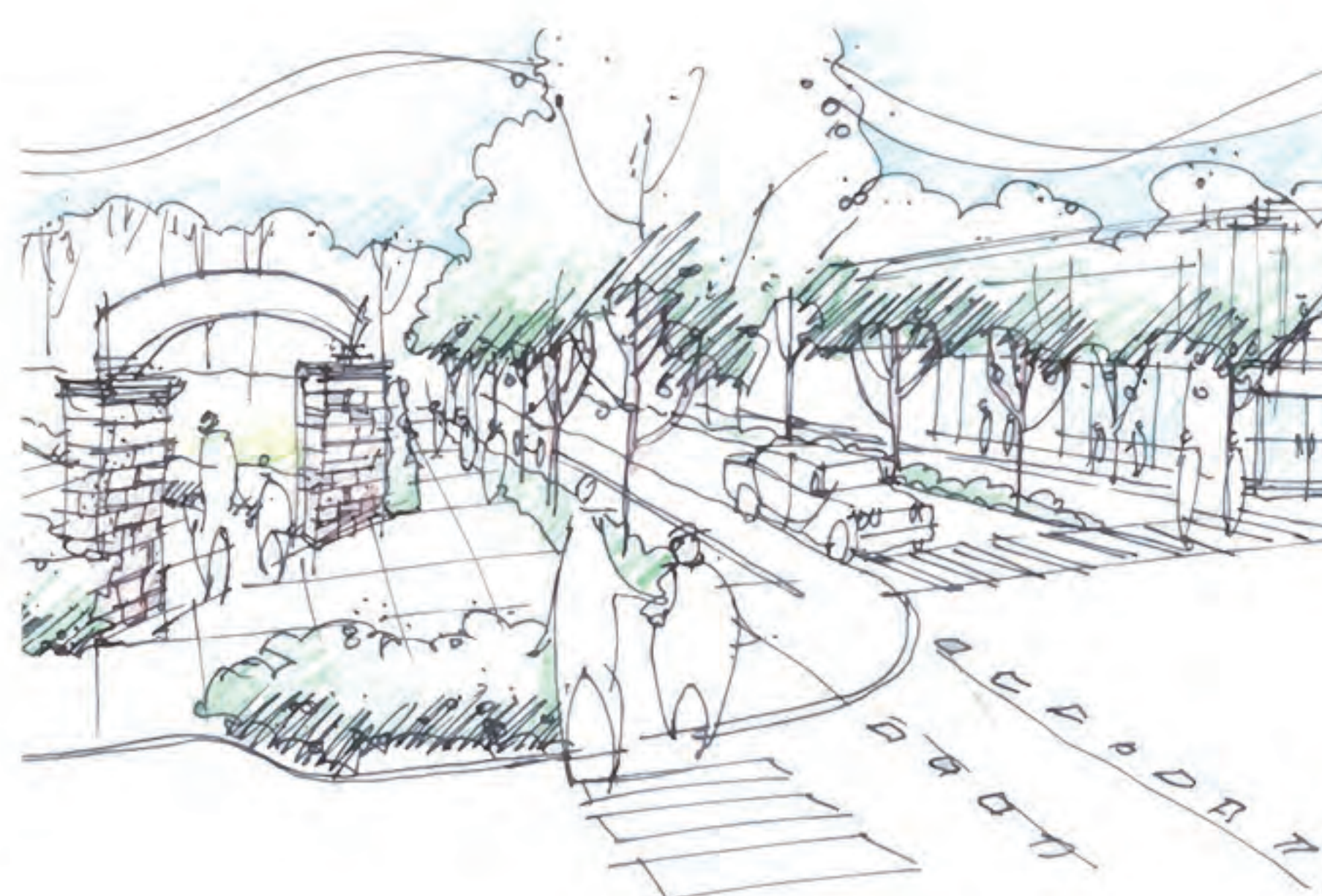
Edmonton

Greenspace Recommendations

During the Corridor Study completed in 2017, the following recommendations were identified for greenspaces:

- + Naturalize the landscape adjacent to the Fulton and Capilano Ravines with native and/or adaptive species
- + Install a gateway feature at the east end of 101 Avenue that enhances the landscaped area within the road right of way
- + Bring more green to the street trees and vegetation can be included in the design of the streetscape

Greenspace examples:



ADVISE

SHARE YOUR VOICE
SHAPE OUR CITY

Edmonton

How you can **participate**

The City is completing public engagement events online for all projects due to public health measures as a result of COVID-19.

Online Survey

- + Complete the online survey to share your feedback to validate the corridor study vision and help us understand issues and opportunities in the project area.

Open from June 9 to 23

Engaged Edmonton

- + Share your feedback about the project area using our online Ideas tool.

Your feedback will be used, along with technical requirements and City policies and programs, to create the draft concept plan for 101 Avenue Streetscape.

To learn more and provide feedback:
edmonton.ca/101AvenueStreetscape

SHARE YOUR VOICE
SHAPE OUR CITY

Edmonton

ADVISE

What's **Next**



Your input will be used to develop the draft design concept. The project team expects to share the draft concept for your review and feedback in November 2021.

Thank you!

To learn more and provide feedback:
edmonton.ca/101AvenueStreetscape

Or contact the project team at
101AvenueStreetscape@edmonton.ca

ADVISE

SHARE YOUR VOICE
SHAPE OUR CITY

Edmonton