

BULLETIN

September 24, 2021

170 Street Pedestrian Bridge: Tree Removal and Start of Construction

Construction for the new 170 Street Pedestrian Bridge is anticipated to begin in late October. Prior to construction starting, selected trees will be removed to allow for the construction of a new pedestrian bridge and access ramp. The tree removal is anticipated to begin the first week of October and will take approximately 7-8 days to complete. This work will occur on both sides of 170 Street, between 90 Avenue and 87 Avenue. Construction for the new pedestrian bridge will begin later in October and is anticipated to be complete by Fall, 2022. For more information, please visit edmonton.ca/170StreetPedBridge.

Scope of Work

The project will construct a new pedestrian bridge over 170 Street, including removing the existing structure, and constructing the new bridge, including the access ramp, shared-use path and retaining wall. Prior to construction starting, selected trees will be removed that are in the alignment of the new pedestrian bridge and access ramp.

The City of Edmonton Noise Bylaw (#14600) will be followed, with construction taking place 7 am to 9 pm daily, except for Sundays, 9 am to 7 pm. Any debris from construction will be cleaned and managed on a regular basis. There will be minimal overnight road closures and daytime path closures. Information will be provided in advance of any closures.

Tree Removal

To accommodate the construction of the bridge and ramps, approximately 42 trees will be removed. Tree preservation is an important part of this project; every effort will be made to keep as many trees as possible and new trees will be planted where possible in the project area.

Access

During construction, access to businesses and residential areas for both vehicles and pedestrians will be maintained, where possible, at all times. However, there will be minor lane closures throughout the project as needed to complete the construction aspects. Please watch for signage throughout the project area.

If you have special access requirements, such as DATS, please advise the contact person listed below, as soon as possible.

Please retain this bulletin for contact information and a diagram of the work located on the back

For further information, please contact:

City of Edmonton

311

City of Edmonton

Malika Ali
Engineering Program Manager
Transportation Infrastructure Delivery
Phone: 780-690-6055

EllisDon Construction Services Inc.

Dustin Sorenson
General Site Superintendent
Phone : 587-986-2331

BULLETIN

Figure 1 – East side of 170th Street - Red indicates where trees will be removed.

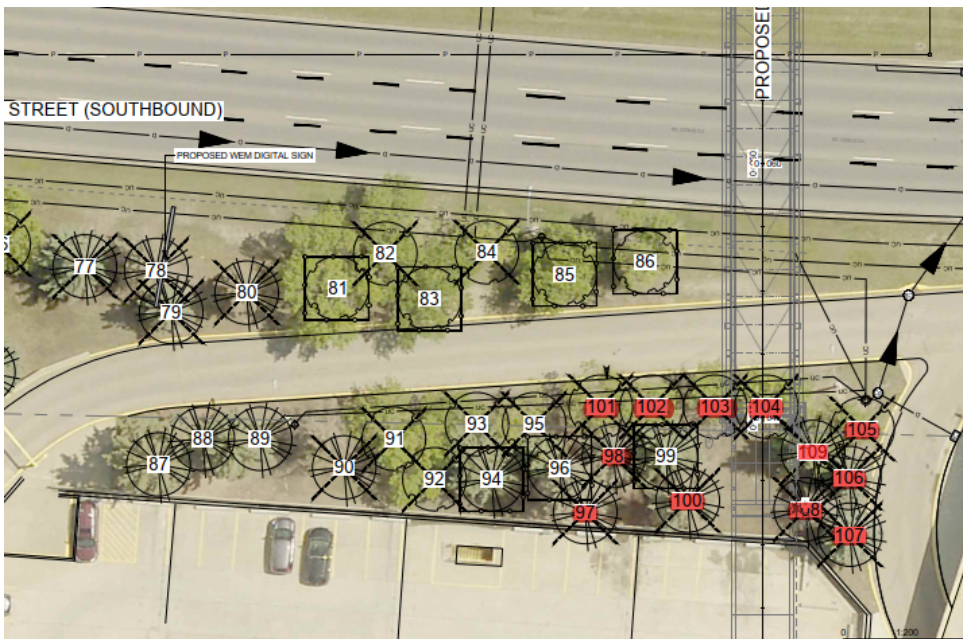
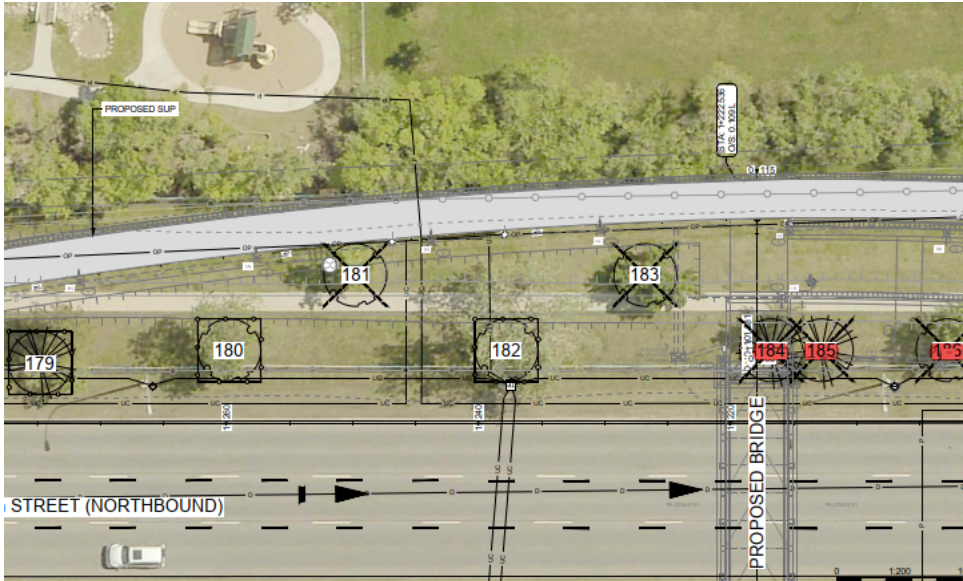


Figure 2 – West side of 170th Street - Red indicates where trees will be removed.

BULLETIN

Figure 3 - Project Site Map - construction will take place in the two black dotted box areas

