



WALTERDALE BRIDGE REPLACEMENT

PROJECT UPDATE

(August 2013)

After nearly 100 years, the Walterdale Bridge has reached the end of its service life. A \$151 million signature replacement bridge will be constructed from 2013-15. The current bridge will be removed in 2016.

CONSTRUCTION

Anyone travelling through the river valley will have noticed the drastically altered landscape on the south side where Queen Elizabeth Park Road once joined Saskatchewan Drive with the Walterdale Bridge.



Installing pilings Walterdale Bridge.

South side work also includes installation of new drainage pipes and utility relocations.

Temporary sheet piling is being driven 20 m below the surface to support deep excavation on the river bank needed to build

Queen Elizabeth Park Road, which closed to traffic July 15, is completely gone and the surrounding area is nearly unrecognizable. Heavy equipment is being used to create a new slope grade, which will align the Queen Elizabeth Park Road with the new



Debris from north side excavation



South side river bank construction

the arch-supporting thrust blocks.

On the north side, excavation is continuing at a slower pace. The area was chosen for construction as it has been previously disturbed and therefore has the least potential to impact cultural resources. At the request of community partners, an archaeological team has been assembled to sort layers of industrial fill removed west of the EPCOR site. Aboriginal observers are overseeing this work, which has thus far recovered metal industrial debris, some animal bones and several shards of glass and pottery. No intact sediments have been found, signifying a lot of prior disturbance in the area. This in turn means a very low possibility of intact cultural features being found.

INTERPRETIVE BELVEDERE

The interpretive belvedere has been removed to accommodate excavation for the future bridge

alignment on the north side of the river. A temporary location will be found for the information panels for the duration of construction.



Sifting through infill on north side

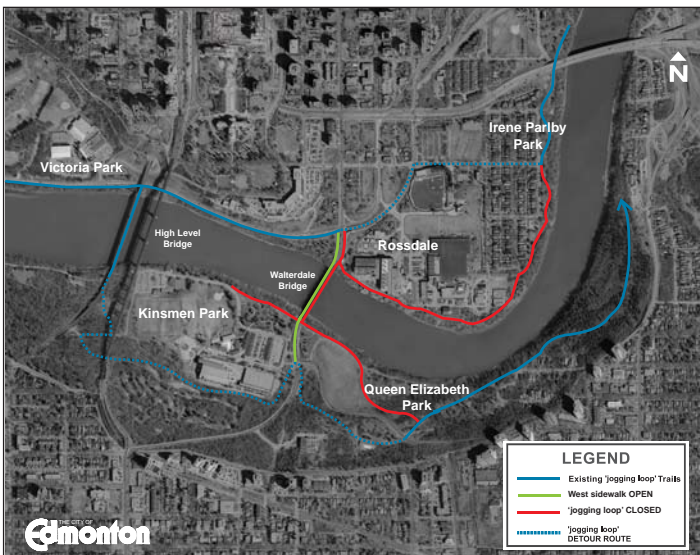


TRAFFIC IMPACTS

Queen Elizabeth Park Road will remain closed until November.

Walterdale Bridge, the Kinsmen Sports Centre and John Walter Museum are still accessible via Walterdale Hill Road. Detours to downtown include 99 Street/Scona Road to the Low Level Bridge or 98 Avenue/James MacDonald Bridge.

ETS Route 52 will detour using 99 Street/Scona Road.



Updated pedestrian/cyclist detour map

in this newsletter will be posted to the web on a monthly basis during construction. Go to edmonton.ca/photos to search for images.

CONSTRUCTION TIMELINE

2013	<p>Completed</p> <ul style="list-style-type: none"> • Tree clearing. • Access roads and in-river berms. • Park trails rerouted. • Interpretive belvedere moved to temporary location. <p>Ongoing/Upcoming</p> <ul style="list-style-type: none"> • Relocate utilities/construct drainage system. • Realign Queen Elizabeth Park Road. • Construct thrust blocks.
2014-15	<ul style="list-style-type: none"> • Construct and erect bridge arches. • Realign Walterdale Hill Road. • Construct bridge. • Connect roads to new bridge alignment. • Landscaping/trail connections.
2015-16	<ul style="list-style-type: none"> • Grand opening of new bridge. • Demolition of old bridge.

PEDESTRIAN IMPACTS

The east sidewalk on the bridge is permanently closed to pedestrians. A revised pedestrian/cyclist detour map has been created and is available on the project web page.

PUBLIC SAFETY/SITE SECURITY

Fencing around the construction areas has been erected for your safety and the safety of workers on site. Remember to avoid the closed areas during construction.

PHOTOS/VIDEOS

Photos such as the ones included



View of south side construction area from Queen Elizabeth Park