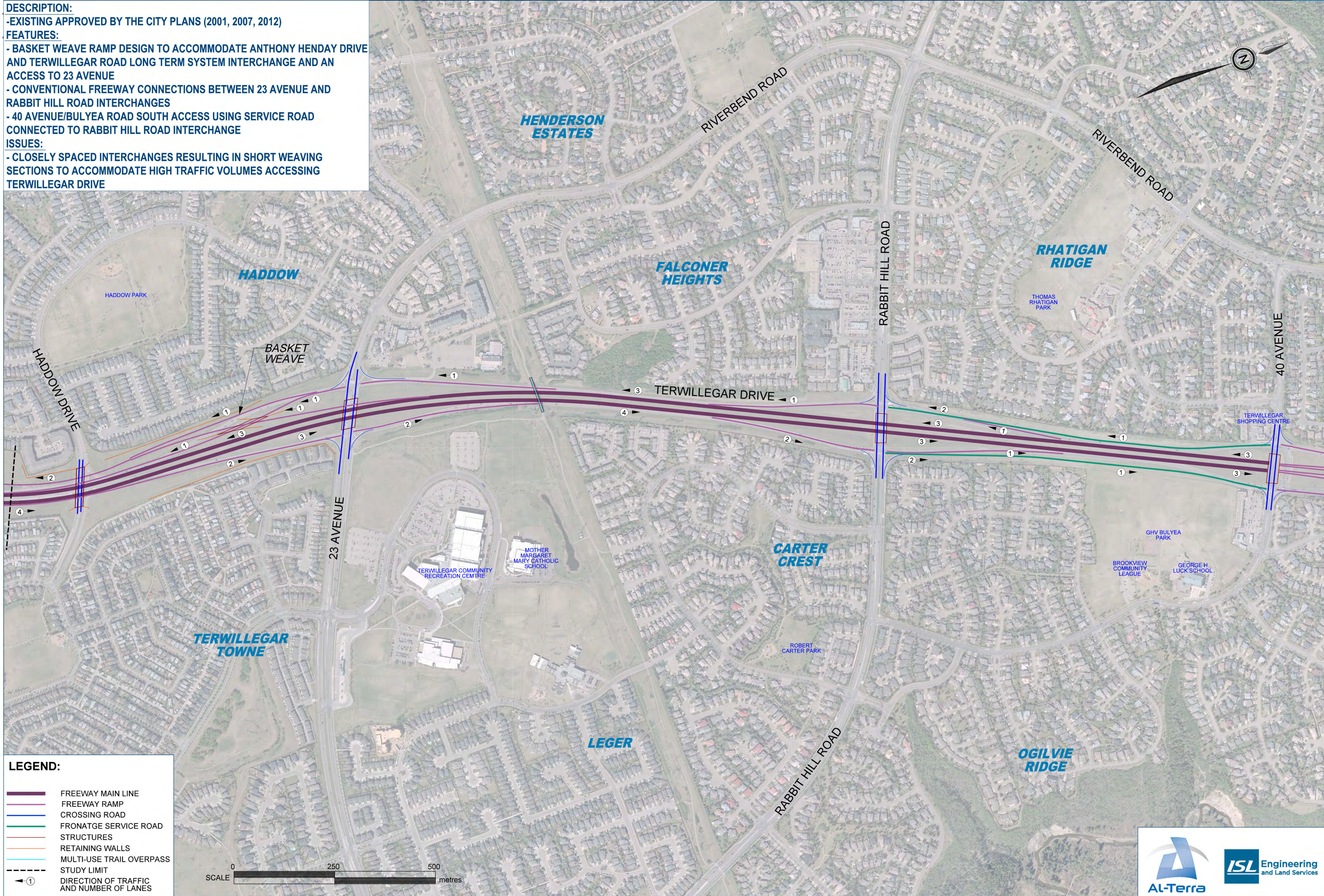


TERWILLEGAR DRIVE (TUC TO WHITEMUD DRIVE) CONCEPT PLANNING STUDY UPDATE CENTRAL SECTION OPTION A

DESCRIPTION:
- EXISTING APPROVED BY THE CITY PLANS (2001, 2007, 2012)

FEATURES:
- BASKET WEAVE RAMP DESIGN TO ACCOMMODATE ANTHONY HENDAY DRIVE AND TERWILLEGAR ROAD LONG TERM SYSTEM INTERCHANGE AND AN ACCESS TO 23 AVENUE
- CONVENTIONAL FREEWAY CONNECTIONS BETWEEN 23 AVENUE AND RABBIT HILL ROAD INTERCHANGES
- 40 AVENUE/BULYEA ROAD SOUTH ACCESS USING SERVICE ROAD CONNECTED TO RABBIT HILL ROAD INTERCHANGE

ISSUES:
- CLOSELY SPACED INTERCHANGES RESULTING IN SHORT WEAVING SECTIONS TO ACCOMMODATE HIGH TRAFFIC VOLUMES ACCESSING TERWILLEGAR DRIVE



LEGEND:

- FREEWAY MAIN LINE
- FREEWAY RAMP
- CROSSING ROAD
- FRONTAGE SERVICE ROAD
- STRUCTURES
- RETAINING WALLS
- MULTI-USE TRAIL OVERPASS
- STUDY LIMIT
- DIRECTION OF TRAFFIC AND NUMBER OF LANES