

TERWILLEGAR DRIVE (TUC TO WHITEMUD DRIVE) CONCEPT PLANNING STUDY UPDATE CENTRAL SECTION OPTION E

DESCRIPTION:

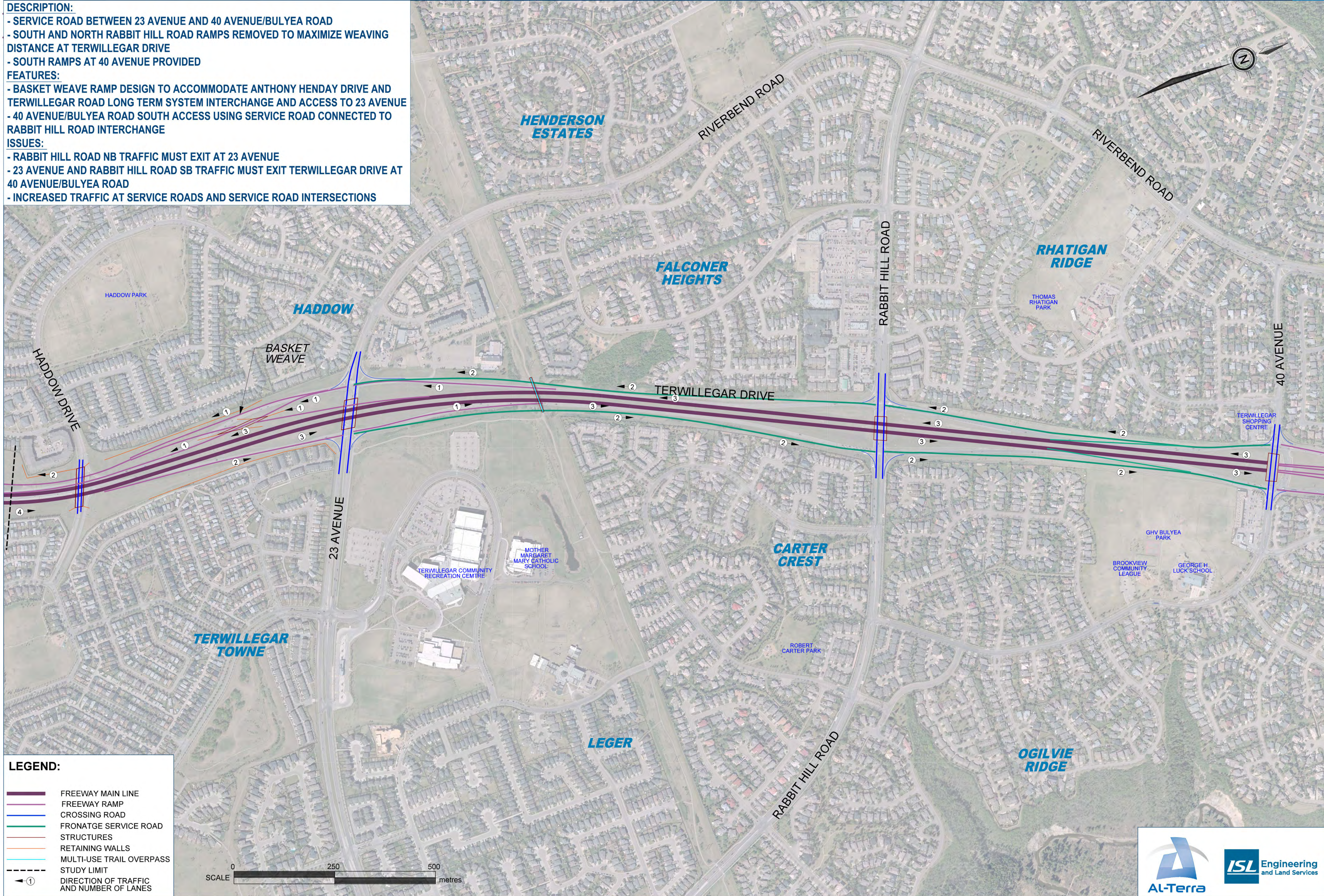
- SERVICE ROAD BETWEEN 23 AVENUE AND 40 AVENUE/BULYEA ROAD
- SOUTH AND NORTH RABBIT HILL ROAD RAMPS REMOVED TO MAXIMIZE WEAVING DISTANCE AT TERWILLEGAR DRIVE
- SOUTH RAMPS AT 40 AVENUE PROVIDED

FEATURES:

- BASKET WEAVE RAMP DESIGN TO ACCOMMODATE ANTHONY HENDAY DRIVE AND TERWILLEGAR ROAD LONG TERM SYSTEM INTERCHANGE AND ACCESS TO 23 AVENUE
- 40 AVENUE/BULYEA ROAD SOUTH ACCESS USING SERVICE ROAD CONNECTED TO RABBIT HILL ROAD INTERCHANGE

ISSUES:

- RABBIT HILL ROAD NB TRAFFIC MUST EXIT AT 23 AVENUE
- 23 AVENUE AND RABBIT HILL ROAD SB TRAFFIC MUST EXIT TERWILLEGAR DRIVE AT 40 AVENUE/BULYEA ROAD
- INCREASED TRAFFIC AT SERVICE ROADS AND SERVICE ROAD INTERSECTIONS



LEGEND:

- FREEWAY MAIN LINE
- FREEWAY RAMP
- CROSSING ROAD
- FRONTAGE SERVICE ROAD
- STRUCTURES
- RETAINING WALLS
- MULTI-USE TRAIL OVERPASS
- - - STUDY LIMIT
- ← ① DIRECTION OF TRAFFIC AND NUMBER OF LANES

