

N-B

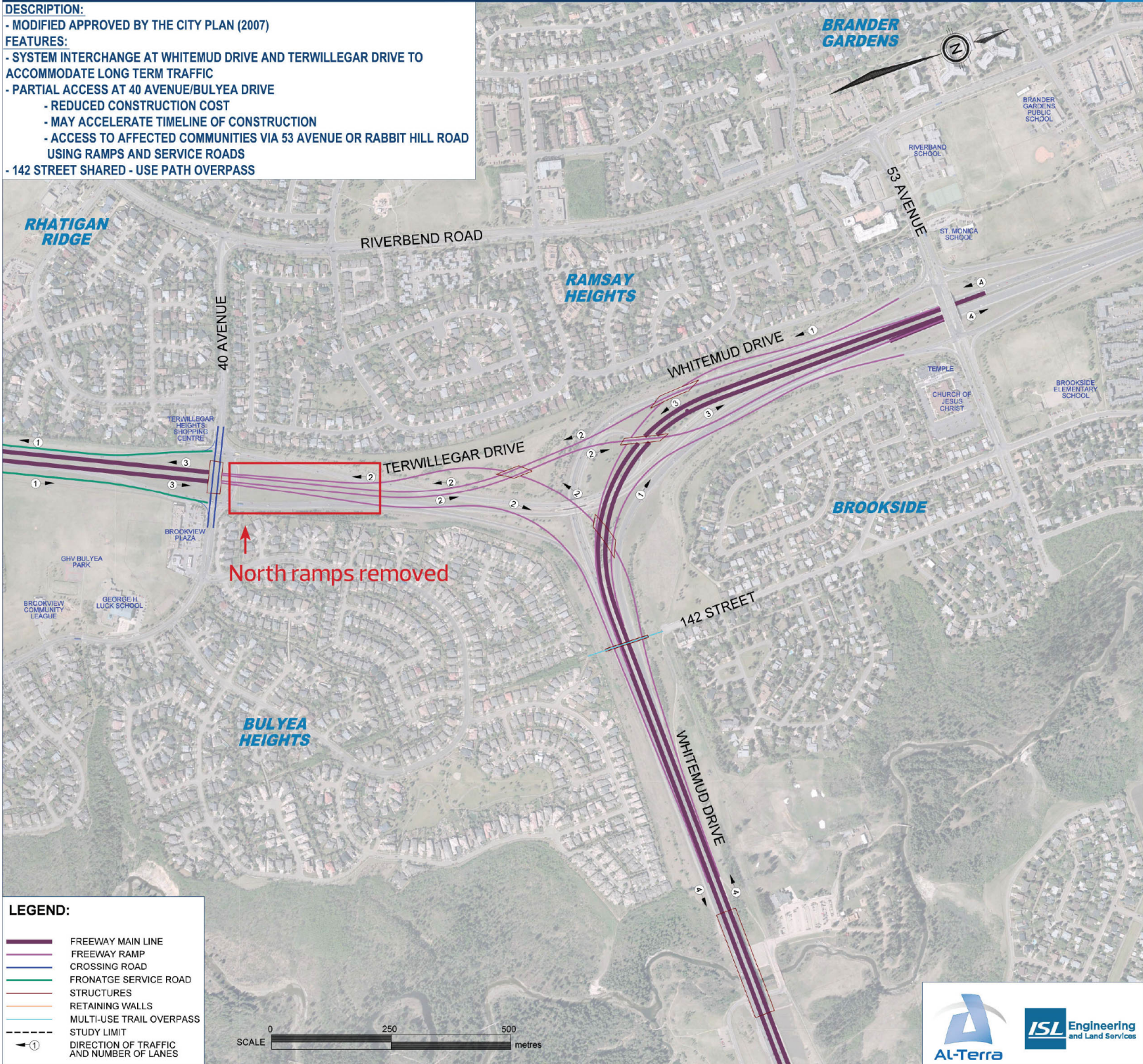
TERWILLEGAR DRIVE (TUC TO WHITEMUD DRIVE) CONCEPT PLANNING STUDY UPDATE NORTH SECTION OPTION B

DESCRIPTION:

- MODIFIED APPROVED BY THE CITY PLAN (2007)

FEATURES:

- SYSTEM INTERCHANGE AT WHITEMUD DRIVE AND TERWILLEGAR DRIVE TO ACCOMMODATE LONG TERM TRAFFIC
- PARTIAL ACCESS AT 40 AVENUE/BULYEA DRIVE
 - REDUCED CONSTRUCTION COST
 - MAY ACCELERATE TIMELINE OF CONSTRUCTION
 - ACCESS TO AFFECTED COMMUNITIES VIA 53 AVENUE OR RABBIT HILL ROAD USING RAMPS AND SERVICE ROADS
- 142 STREET SHARED - USE PATH OVERPASS



LEGEND:

- FREEWAY MAIN LINE
- FREEWAY RAMP
- CROSSING ROAD
- FRONTAGE SERVICE ROAD
- STRUCTURES
- RETAINING WALLS
- MULTI-USE TRAIL OVERPASS
- STUDY LIMIT
- ← ① DIRECTION OF TRAFFIC AND NUMBER OF LANES

