

# Thank you for choosing to be here today.

Share your views on how you use Yellowhead Trail between 50 Street and North Saskatchewan River.

| SHARE YOUR VOICE  
SHAPE YOUR CITY

Edmonton



# Yellowhead Trail Freeway Conversion Program



\*Subject to Planning and Design

## Legend

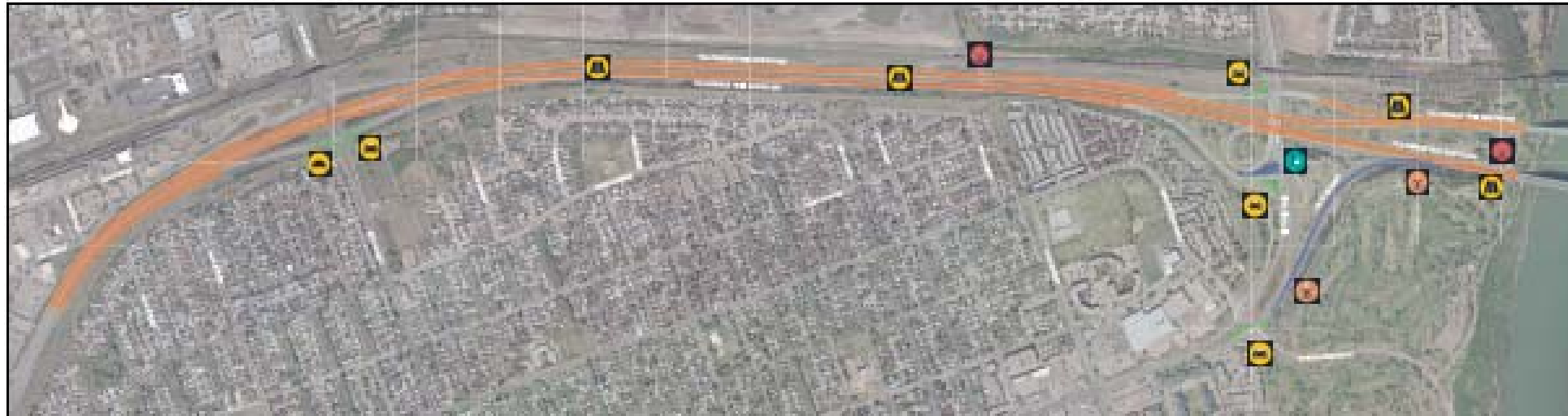
- Highway 16/  
Yellowhead Trail
- Intersection Closure
- Existing Interchange
- Future Interchanges
- Existing Interchange  
To Be Modified
- Fort Road Widening
- Yellowhead Trail Widening








SHARE YOUR VOICE  
SHAPE YOUR CITY



# Project Scope



-  Yellowhead Trail from 50 Street to the North Saskatchewan River will be widened from two to three lanes in each direction.
-  Existing northbound to eastbound ramp at Yellowhead Trail and Victoria Trail interchange will be closed until the North Saskatchewan River bridges are widened.
-  A new ramp connection will be provided for the northbound to eastbound movement at Yellowhead Trail and Victoria Trail Interchange.
-  Ramp changes will be made on an as-needed basis to provide safer conditions for drivers.
-  Median openings and accesses will be reviewed to provide safer conditions for drivers.



# Project Phases



**Strategy:** In 2011, the City explored the technical changes needed between 61 Street and the North Saskatchewan River to support the conversion of Yellowhead Trail into a freeway.

**Concept Phase:** The concept plan was created in August 2016.

## **Design Phase:**

- The public is invited to share their views on how this segment of Yellowhead Trail is used.
- The City will develop a final design that will consider the input gathered. The public will be invited to learn about the final design and provide feedback in fall 2019.

**Build:** Construction will begin in 2020. The final design will be applied to the area.

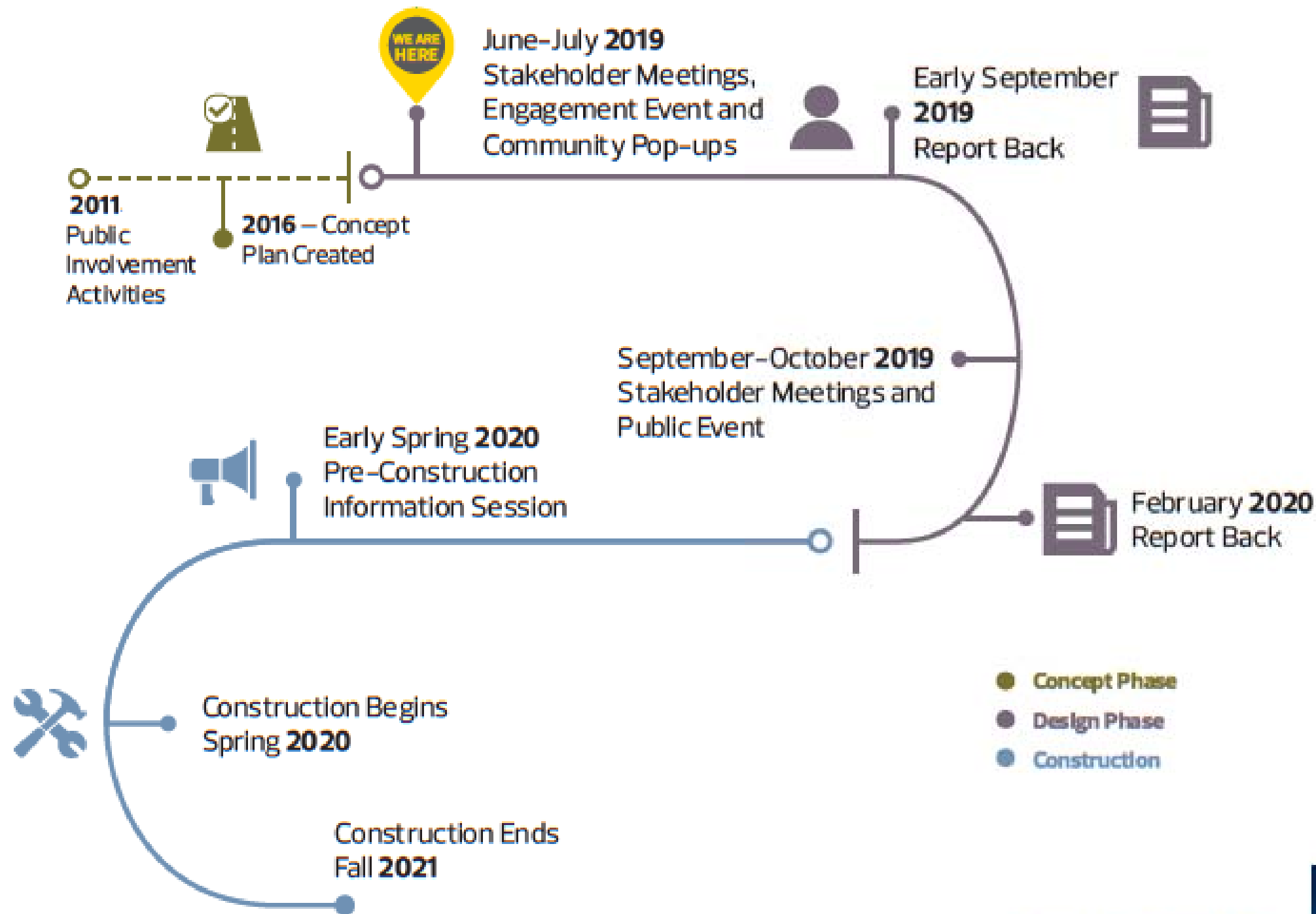
**Operate:** Construction will be completed by the end of 2021. The area will be fully open for use in its new form.

SHARE YOUR VOICE  
SHAPE YOUR CITY

Edmonton



# Project Timeline



**SHARE YOUR VOICE  
SHAPE YOUR CITY**

**Edmonton**



# Engagement Spectrum and Decisions

The public is consulted by the City to share feedback and perspectives that are considered for policies, programs, projects, or services.

**ADVISE**

The public is involved by the City to adapt and adjust approaches to policies, programs, projects, or services.

**REFINE**

The public collaborates with the City to develop and build solutions regarding policies, programs, projects, or services. This can include community initiated engagement.

**CREATE**

The public is empowered to make decisions directly or on behalf of the City about policies, programs, projects, or services.

**DECIDE**

**SHARE YOUR VOICE  
SHAPE YOUR CITY**



# Engaging with the Community

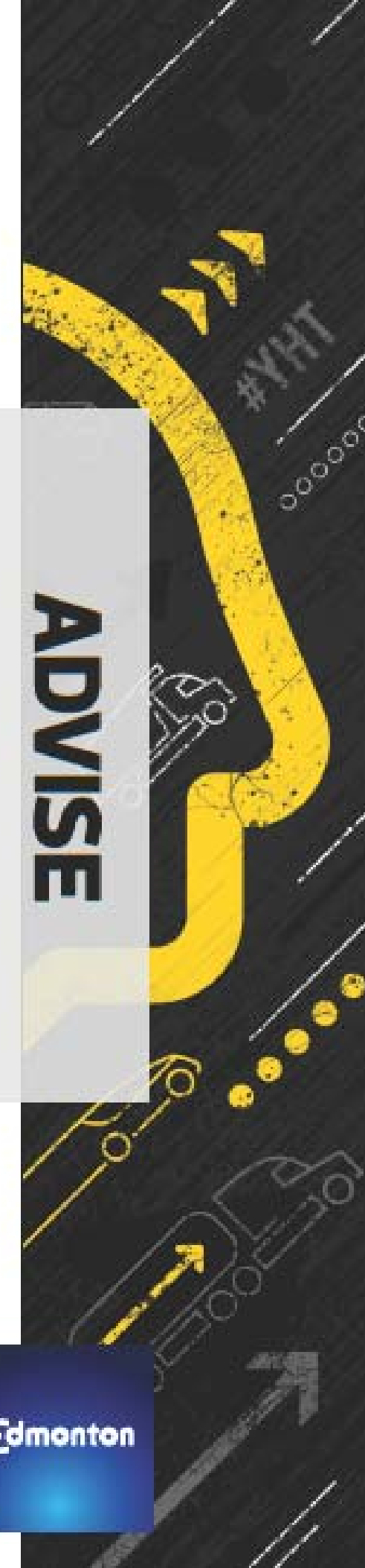
Knowing about your unique engagement needs helps us to be inclusive.

**Can you tell us where are the most convenient locations and times of day to host engagement opportunities?**

SHARE YOUR VOICE  
SHAPE YOUR CITY

Edmonton

ADVISE



# Communicating with the Community

Knowing about the unique communication needs of your area helps us improve and expand our outreach so the public can stay informed about the project and future events.

**Please tell us how you prefer to learn about the project and future events by placing a green sticker on the communications tools you like and by sharing comments with sticky notes about other tools or needs we should consider.**

FACEBOOK & TWITTER  
SOCIAL MEDIA  
PROMOTION

NEWSPAPER ADS

COMMUNITY LEAGUE  
NEWSLETTERS &  
SOCIAL MEDIA CHANNELS

POSTERS

SCHOOL FLYER  
INSERT

PROJECT WEBPAGE

EMAIL BLAST

POSTCARDS

ROADWAY SIGNS

PROPERTY OWNER  
LETTERS

OTHER



**ADVISE**

**SHARE YOUR VOICE  
SHAPE YOUR CITY**

**Edmonton**



# What mode of transportation do you use to travel the project corridor?

Place an icon sticker (heavy truck, vehicle, bicycle or pedestrian) on the maps to show us.

ADVISE

SHARE YOUR VOICE  
SHAPE YOUR CITY

Edmonton

**Please tell us how you use the area shown on the map by placing a sticker in the column(s) below:**

**DRIVING THROUGH**

**WORK IN THE AREA**

**LIVE IN THE AREA**

**USE SERVICES**  
BUSINESSES IN THE AREA (SCHOOL, SHOPPING)

**SERVICING BUSINESSES IN THE AREA**

**INFREQUENT USER OF THE CORRIDOR**

**ADVISE**

**SHARE YOUR VOICE  
SHAPE YOUR CITY**

**Edmonton**

# What are some of your positive and challenging experiences using the corridor?

Share your comments on the scrawl wall.

ADVISE

SHARE YOUR VOICE  
SHAPE YOUR CITY

Edmonton

# Thank you for coming.

Please take the time to tell us about your experience today by filling in one of the in-person evaluation forms.

Stay up-to-date on the project and sign up for updates at:  
[edmonton.ca/yellowheadeastwidening](https://edmonton.ca/yellowheadeastwidening)

SHARE YOUR VOICE  
SHAPE YOUR CITY

Edmonton

