

See the lights?
Hear the sound?
**LOOK
AROUND!**



Thank you...

...for following the rules of the road and helping emergency responders get to the scene as quickly as possible.

Time is the enemy in any emergency.

You can help emergency responders get to the scene quickly and safely.



Emergency Medical Services



ama.ab.ca/TrafficSafety



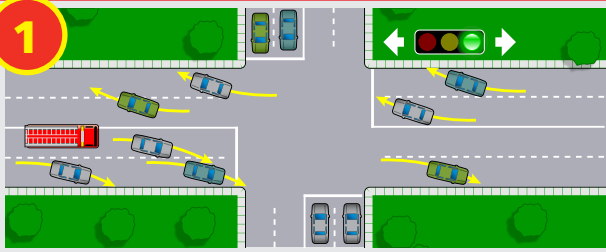
Emergency Medical Services



ama.ab.ca/TrafficSafety

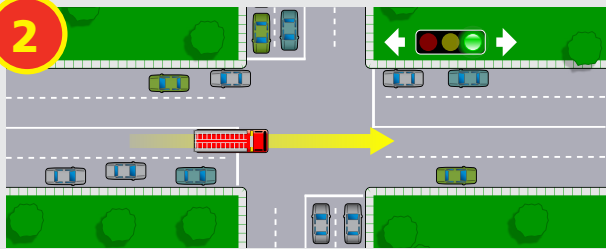
What to do when an emergency vehicle approaches...

1



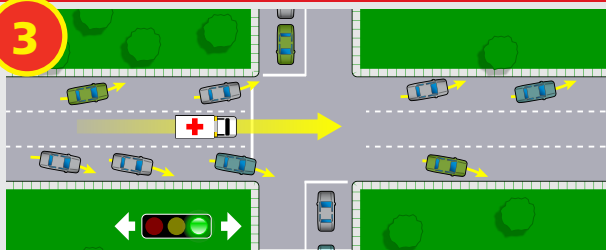
Safely clear the intersection when an emergency vehicle with their lights and siren activated is approaching you.

2



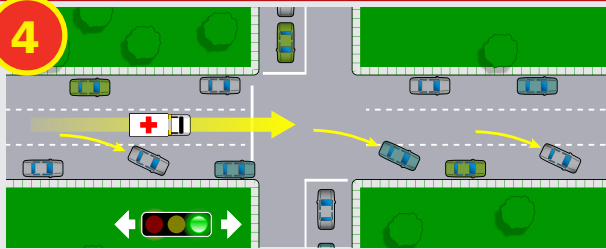
On a one or two lane road, move to the right side of the road. Remember to signal.

3



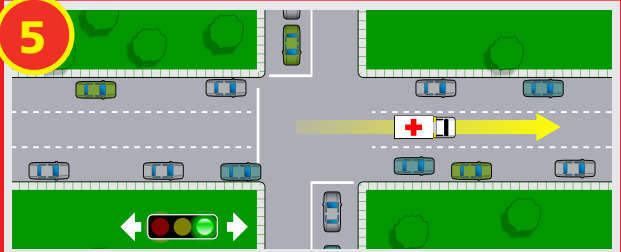
On a road with three or more lanes, clear the intersection and drive to the nearest side of the road. Remember to signal.

4



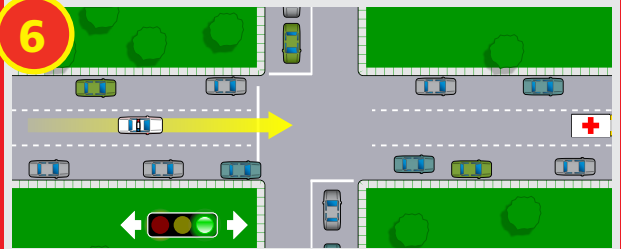
If you're driving in the centre lane, move to the right side of the road.

5



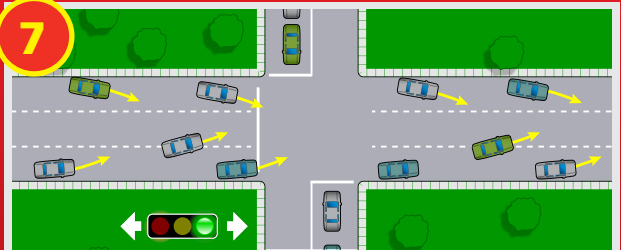
Safely come to a complete stop and wait for the emergency vehicle to pass.

6



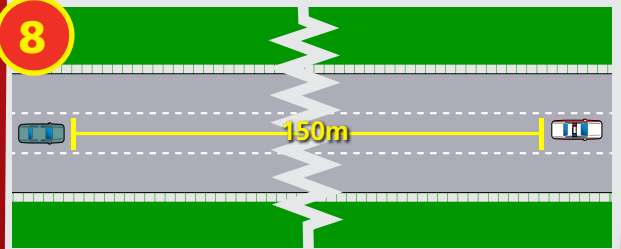
Shoulder check for more emergency vehicles or other drivers before you continue driving.

7



Be considerate of other drivers as you re-enter the traffic flow.

8



When following emergency vehicles, stay at least 150 metres (493 feet) back.