



**2009** Edmonton Urban Design Awards



2009 EDMONTON URBAN  
DESIGN AWARDS

RAIC Alberta Chapter  
Professional Advisor  
Basel Abdulaal , MRAIC

Advisory Committee Chair  
Dnyanesh Deshpande

Graphic Design  
Nathan Zuk

Poetry  
"Poems for a small park" by  
E. D. Blodgett.

Printing  
Pioneer Press

Published in March 2010  
Edmonton, Alberta  
Printed in Canada

NATIONAL LIBRARY OF  
CANADA CATALOGUING DATA

ISBN 978-0-919424-54-8  
(2010)

Funded by  
The City of Edmonton

Supported by  
Edmonton Design Committee

© Royal Architectural Institute  
of Canada  
All Rights Reserved. Published  
in March 2010



2009 Sponsors



2009 Edmonton Urban Design Awards

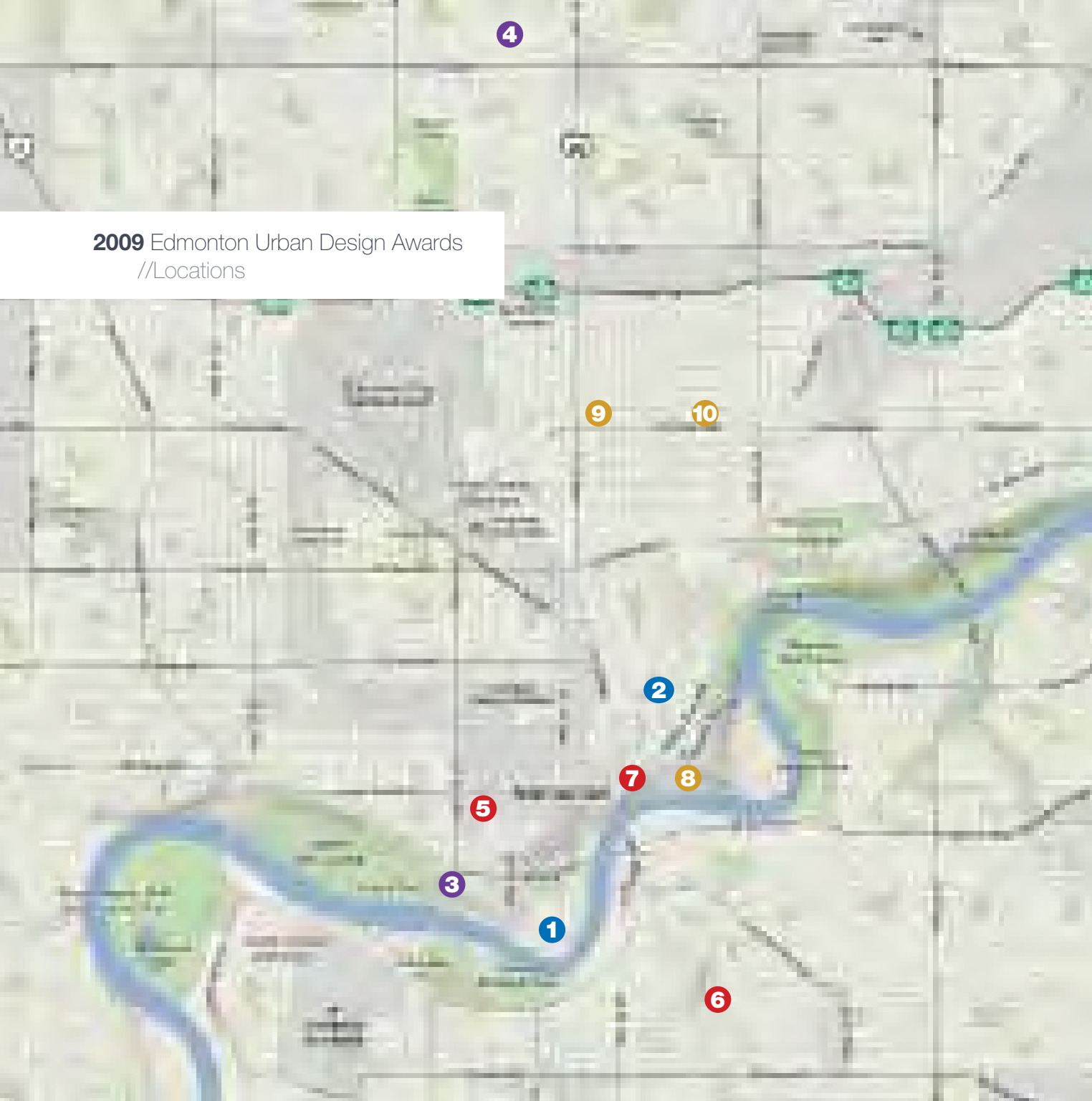


## 2009 Edmonton Urban Design Awards //Contents

Locations	4
Winners	5
Submissions	6
Foreword	9
Preface	10
Message	11
Award Categories	12
Unimplemented Urban Design Plans	14
Implemented Urban Design Plans	24
Urban Architecture	36
Urban Fragments	54
Jury	70
2009 EUDA Committee	72
2009 EUDA Gala Photos	74



**2009** Edmonton Urban Design Awards  
//Locations



**1**  
Unimplemented Urban Design Plans  
West Rosedale Urban Design Plan  
16



**2**  
Unimplemented Urban Design Plans  
The Quarters Urban Design Plan  
20



**3**  
Implemented Urban Design Plans  
Ribbon of Steel  
26



**4**  
Implemented Urban Design Plans  
Griesbach Neighbourhood  
30



**5**  
Urban Architecture  
Capital Health Centre  
38



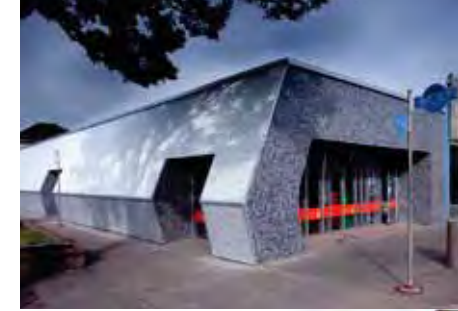
**6**  
Urban Architecture  
Mill Creek Flex Homes  
44



**7**  
Urban Architecture  
Ukrainian Canadian Archives & Museum of Alberta (UCAMA)  
48



**8**  
Urban Fragments  
Poetry Rings  
56



**9**  
Urban Fragments  
11805 - 94 Street Façade Improvement  
62



**10**  
Urban Fragments  
Myhre's Music Façade Improvement  
66





2009 Edmonton Urban Design Awards  
//Submissions





*Foreword From*  
**Stephen Mandel**

Mayor  
City of Edmonton

I'm thrilled that the City of Edmonton once again hosted its biennial urban design awards. It's important to celebrate the work of those who contribute to transforming Edmonton's urban form and improving our urban landscape.

Good urban design demands excellence in architecture, creation of vibrant public places, commitment to public art and a shift towards urban culture. It also has environmental, economic, social and cultural consequences.

How we live, move, and go about our daily lives is influenced by the design of buildings, places, spaces and networks that make up our city.

We're proud of the achievements we've made in recent times to improve the city's built environment and urban design. In 2005 and 2007, the urban design awards showed us wonderful examples of excellence in urban, architectural and landscape design.

Congratulations to this year's winners. You join an impressive list of others who have shown us that high quality urban design does exist in Edmonton. You are proving that we really can produce world-class architecture and urban design in this city.

Yours truly,





*Preface From*  
**Robert Stirling**  
President (2008-2010)  
RAIC Alberta Chapter



A core mission of the Royal Architecture Institute of Canada (RAIC) is to instil in the minds of all Canadians that architecture matters. Recognizing design excellence is but one way of putting these words into action.

As the leading voice of architecture in Canada, the RAIC vigorously promotes good urban design and the important role it plays in maintaining and enhancing the quality of life in Canadian cities. To this end, the RAIC, the Canadian Institute of Planners, the Canadian Society of Landscape Architects, and several Canadian municipalities have joined together to help foster a greater awareness and appreciation of this role through a biennial National Awards program.

In 2005, along with the City of Edmonton, the RAIC established the Edmonton Urban Design Awards to recognize the efforts of individuals, organizations, and firms aimed at enhancing the quality of life in and sustainability of our provincial capital. This year the program attracted over 50 entries covering a wide-range of local projects and plans at a multitude of scales. Congratulations to this year's award recipients!

Many thanks are due to all the Alberta designers, developers, architects, planners and artists that this year submitted their work for critical review by the acclaimed and accomplished members of our awards jury. Special recognition is also reserved for Principal Urban Designer for the City of Edmonton, Dnyanesh Deshpande and RAIC Alberta Chapter executive member, Basel Abdulaal. Their energy and enthusiasm, along with those of their fellow awards steering committee members, have made the entire awards program, including a stellar awards gala, such a memorable success.

Robert Stirling, Architect, AAA, MRAIC



*Message From*  
**Dnyanesh Deshpande**  
EUDA 2009 Chair  
City of Edmonton



The 2009 Edmonton Urban Design Awards program was a great success. We received an overwhelming response from the design community, which reflects the number of quality urban design projects being implemented in Alberta's capital city in the last few years.

The success of the awards program truly belongs to the collective effort of our Advisory Committee, the insightful jury members, the City of Edmonton staff, the Royal Architectural Institute of Canada (RAIC) staff and our design community.

This year's advisory committee was composed of representatives from RAIC's Alberta Chapter, the City of Edmonton, Alberta Association of the Canadian Institute of Planners (AACIP), Alberta Association of Architects (AAA), Alberta Association of Landscape Architects (AALA) and the Edmonton Design Committee (EDC).

We were fortunate to have an esteemed jury panel of some leading North American design professionals. I would like to thank the jury members for their remarkable contribution to the awards program.

I was particularly impressed by the high quality and diversity of projects entered in all categories. This truly emphasizes the collective role of various design and planning disciplines in improving the quality of life in our city. This publication strives to provide a snapshot of Edmonton's award winning urban design projects and serves as an information manual for all design professionals.

With warmest regards,

*Dnyanesh Deshpande*



## Award Categories

The City of Edmonton accepted entries in six major categories for the 2009 Urban Design Awards, in accordance with the RAIC Urban Design award guidelines.

### Un-Implemented Urban Design Plans

This category is for a plan or a study of a significant area within the municipality that provides a development or redevelopment strategy for urban transformation in the mid-term to long-term timeline. The plans or studies have no official status, or are approved by the authority having jurisdiction but are not implemented. Submissions may be made for plans of high inspirational value with the potential for significant impact on the city's development, such as: urban design studies, urban design charrette proposals, site specific zoning bylaws (DC1, DC2), urban design guidelines, master plans, redevelopment strategies and community plans (ARP, NSP).

### Implemented Urban Design Plans

This category is for an urban design plan or study that has already been approved and physical changes have already started to occur.

### Urban Architecture

This category is for a building or group of buildings that contribute and support an urban design initiative. This includes an individual building or group of buildings of high architectural standard, which achieves urban design excellence through its unique relationship with its immediate surroundings because of its site, massing and pedestrian amenities. The building will also contribute to defining a special relationship with the neighbouring urban fabric.

### Civic Design Projects

This category is for civic improvement projects such as a park, a public space, civil engineering infrastructure, etc, which have been implemented as the result of an urban design plan or initiative.

### Urban Fragments

This will involve a single, small-scale piece of a building or landscape that contribute significantly to the quality of the public realm. This category includes small and modest elements such as street furniture, lighting elements, interpretation media, memorials, public art or other forms that contribute to the beautification, enjoyment, and/or appreciation of the urban environment. Projects can be of a temporary (but not ephemeral) or permanent nature.

### Community Improvement Projects

This category is for any built project, however modest, initiated and implemented by a community-based organization that enhances the public realm. Streetscape, public art, special installations, environmental initiatives, or a banner program are examples.





*nothing lay so clear  
before **those** who stood  
on these **banks** than the **great**  
canopy of **sky**  
that spread **above them** and  
poured forth its **endless** light  
and **everything** it seemed  
stood eternal here  
all **that** was laid bare*

**1**  
Award Of Excellence



West Rosedale Urban Design Plan

**2**  
Award Of Merit



The Quarters Urban Design Plan





**Award of Excellence** | Unimplemented Urban Design Plans

### West Rossdale Urban Design Plan

Prime Consultant and Landscape Architect: Carlyle and Associates

Planners: Armin A. Preksaitis and Associates Ltd.

Architects: Sturgess Architecture

Transportation: Bunt and Associates

Engineers: Associated Engineering

Historian: Catherine C. Cole and Associates

Project Owner: City of Edmonton

*Location: The West Rossdale area boundaries are 97 Avenue to the north, Rossdale Road to the south (excluding the EPCOR lands south of Telus Field), 106 Street to the west and 101 Street to the east.*





## Project Description

The West Rosedale area is currently mostly vacant or recreational land with its main feature being Telus field. Immediately east of this plan area is the residential component of the Rosedale neighbourhood, made up of a mix of older homes (60-85 years old) and newer or rebuilt homes.

The West Rosedale area boundaries are 97 Avenue to the north, Rosedale Road to the south (excluding the EPCOR lands south of Telus Field), 106 Street to the west and 101 Street to the east.

The plan calls for the transformation of this historic area into a diverse, sustainable neighbourhood with a broad range of residential, commercial retail, public parks and other amenities. It will have an enriched pedestrian-friendly grid of streets, lanes, and multi-modal promenades to connect to the river, the legislature and the downtown.



The streetscape will reflect the area's history, complemented by the placement of public art and interpretive displays, tree-lined streets, public gardens and mews. Transit into the area will be improved and the major roadways will be transformed into signature gateways and grand avenues, in order to better welcome visitors and residents.

The West Rosedale Urban Design Plan is being developed in coordination with the joint City of Edmonton – Alberta Government agreement: “Edmonton – Alberta’s Capital City Integrated Planning and Design Initiative” (April 2009).

## Jury comments

- The superior graphics of the submission boards gave the feeling of a real, living place.
- The project does not try to entertain the viewer with extraordinary forms, rather it connects streets and sightlines in a logical and effective manner.
- The plan integrates the urban pattern of the public streets into private courtyards and emphasizes ceremonial boulevards through double rows of trees.
- The scale of intervention in this project is excellent, with a focus on the area from one to fifteen feet from the ground. This human connection is reinforced by proposed retail at grade, as well as architectural and landscape detail at the pedestrian level.
- Overall, this plan is logical, legible and represents a place where the jury would be happy to live and work.





## Award of Merit | Unimplemented Urban Design Plans

### The Quarters Urban Design Plan

Architect: ONPA Architects

Landscape Architect: EIDOS Consultants Inc.

Designer: Jessica Roder, Dana Bao, Daryl Procinsky, Darren Radbourne, Ernst von Meijenfeldt

Artist: Darren Radbourne

Project owner: City of Edmonton

*Location: The Quarters area extends east from 97 Street to 92 Street, and south from 103A Avenue to the top of the river valley (approximately 40 hectares or 100 acres).*



## Project Description

The Quarters Downtown will be made up of five distinct districts or precincts. There will be four “quarters” each having their own unique character and design; at the centre of The Quarters will be a linear park corridor known as The Armature.

The City of Edmonton’s vision for The Quarters is a neighbourhood that is well-connected to the downtown core and river valley, yet has a distinct image that identifies it as a unique place in the city. Streets are improved with limited through traffic, making the streets safe and inviting for pedestrians and bicyclists. Large city blocks are broken into smaller, more inviting and walkable pieces. Activity abounds.

Open space is surrounded by businesses and housing, creating a safe and inviting amenity year round. The Quarters is a place where community is important and pride and investment in the neighbourhood is evident.

Community density is the key to success in the Quarters for small service business longevity, with lively, safe streets.

Innovative strategies to initiate development include: density enhancement, building and streetscape greening development, energy solutions, source resource use reduction, accelerated permitting, infrastructure improvement, community enhancement, rezoning, and carefully integrated landscape inspirations.



## Jury’s Comments

- The project is compelling in its scale, vision and use of green space as a connector. This is a huge step forward for Edmonton’s Downtown East.
- Green spaces are used as a connector on a traditional grid. Nicely done.
- This is a visionary plan. As the redevelopment proceeds, it may be helpful to specifically identify heritage properties and areas on a plan.
- The awkward intersection with Jasper Avenue is dealt with nicely in this project.
- Better illustrations for the existing context and the proposed interventions could have helped the jury review process.





*late* in the **afternoon**  
deer **drift** toward the bank  
gazing with *wakeful* eyes  
at **houses** that throughout  
the *day* start to **rise**  
as if the wind among the **leaves**  
the river *flowing* past  
had **strangely** come to rest  
no *farther* place to **reach**

3

Award Of Excellence



Ribbon of Steel

4

Award Of Merit



Griesbach Neighbourhood





**Award of Excellence** | Implemented Urban Design Plans

### Ribbon of Steel

Landscape Architect: EDA Collaborative Inc.  
Project Owner: City of Edmonton

*Location: The Ribbon of Steel corridor extends from 97 Avenue to Jasper Avenue between 109 and 110 streets. At each end, it connects with walkways on the High Level Bridge and through the Railtown community.*



## Project Description

The Ribbon of Steel is a trail for walkers, cyclists, joggers and inline skaters along the former Canadian Pacific Rail lands north of the High Level Bridge. It has new landscaping, lighting, rest areas and interpretative features.

The goal of this project was the development of a multi-use trail within an abandoned railway corridor known as the Ribbon of Steel. The corridor was previously recognized as an important link between Edmonton's downtown core, adjacent communities and the North Saskatchewan River Valley. The corridor passes through three communities and is surrounded by a variety of land uses including residential, commercial and vacant lands.

From an aesthetic perspective, the driving idea behind the multi-use corridor was the Ribbon of Steel name. This concept drew upon the historic significance of the CP rail spur and its contribution to downtown.

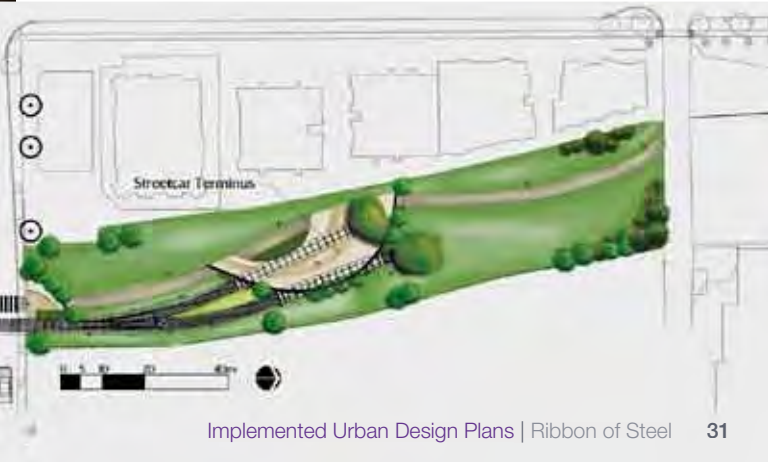
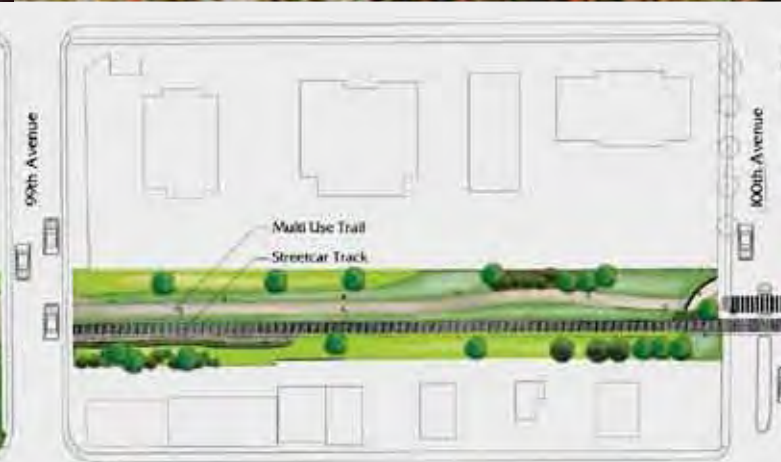
This theme created a unique and memorable character by encouraging the expansion of the High Level Streetcar rail line and the addition of interpretive features and art into the landscape. The corridor's function extends beyond traditional cyclist and pedestrian needs to add the rail line necessary for streetcar operation.

For the majority of the corridor's length, the streetcar rail line and multi-use trail function adjacent to one another, an homage to typical European scenes of pedestrian-oriented transit. Most importantly, the Ribbon of Steel's enhancements promote increased physical activity and a strong link between the river valley and Jasper Avenue.



## Jury's comments

- A very interesting concept following the old rail line.
- The project connects various areas from the Legislature building to the Jasper Avenue that are not connected at the street level.
- Although there are some issues related to the pedestrian links below street level and character and height of surrounding buildings, overall the project demonstrates some key urban design principles such as improving linkages and human scale design.







**Award of Merit | Implemented Urban Design Plans**

### Griesbach Neighbourhood

Lead Planner: John Steil, Stantec Consulting Ltd.  
Engineer: AECOM, Scheffer Andrew Planners and Engineers  
Landscape Architect: AECOM, IBI Group  
Project owner: Canada Lands CLC Ltd.

*Location: This project is on a former Canadian Forces Base located between 97 and 113 streets and 137 and 153 avenues in north Edmonton.*







## Project Description

Redevelopment of the 620-acre former Canadian Forces army base, designed for 13,000 people, is now 25% built and will be completed over 10-15 years. Given its context, it is primarily residential, but includes a village centre and transit-oriented mixed-use centre.

Tree-lined roadways focus on a central man-made hill. Paths integrated into the overall green system and adjacent neighbourhoods accompany a waterway system. This design, combined with traffic calming, heritage interpretation, and the dispersal of parks makes it very people-friendly.

Griesbach's guidelines promote diversity, with an eclectic mix of housing forms and styles from garage suites to apartments; homes for families, seniors, and a veterans' centre. Subdivisions have been designed around existing housing; some were relocated on new foundations.

Saving and relocating existing vegetation creates the feel of an established community; plans are to integrate evergreen rows into 'green streets.'

Various design elements pay homage to the Griesbach neighbourhood's military heritage. William Griesbach, Edmonton's second mayor, First World War hero, MP and Senator, is honoured with an equestrian statue. A pedestrian crossing of Patricia Lake replicates a Bailey Bridge, a prefabricated bridge used by combat engineers.

The neighbourhood names program is based on regimental history, peacekeepers, famous battles, war heroes, military nurses, and Victoria Cross winners, etc.



## Jury's comments

- This proposal shows a real improvement over what was originally there. The site visit emphasized that neighbourhood plan demonstrates a better urban design model for Edmonton's suburban areas.
- The levels of urban design thought compared to a basic suburb is like night and day with the town centre, historic pathways, mixed housing forms, etc. The introduction of lanes, distinct signage and sidewalk patterns is creditable.



et tous qui ont *suivi*  
sont entrés dans la *lumière*  
comme si *c'étaient* une mer  
qui les *engloutissait*  
*une* mer *pleine*  
de *grands oiseaux*  
*qui les menaient*  
plus profondément  
*vers* la *source* des *étoiles*

**5**  
Award Of Excellence



Capital Health Centre

**6**  
Award Of Merit



Mill Creek Flex Homes

**7**  
Award Of Merit



Ukrainian Canadian  
Archives & Museum of  
Alberta (UCAMA)





**Award of Excellence** | Urban Architecture

Capital Health Centre

Architect: Dub Architects Ltd.

Project owner: Alberta Health Services

*Location: 10030-107 Street Northwest*





The new entry provides users with an open, all-seasons gathering space to be used as an exhibition and event space. The thoroughly shaded space provides ample natural light during the winter, without harsh direct sun and its heat during the summer, creating a naturally-lit refuge from the low ceilings in the towers.



## Project Description

Capital Health Centre involved a redesign of the ground floors of twin office towers built in the 1970's, previously connected by a cramped, hidden and uninviting entryway, as well as a new entry space in between. The challenge was to make the complex worthy of its new role as the Edmonton headquarters of Alberta's largest employer.

In addition to the transparency of street-level uses, the new entry has a strong presence from 107th Street, as well as visibility from Jasper Avenue, serving as a useful way-finding device for the building. After dark, the structure is lit up to animate the streetscape and give it a greater sense of security.

The large sloped roof offers a simple design strategy that adopts a civic scale from the exterior, yet recedes to an intimate human scale inside—drawing the street into a gathering space that is both urban and intimate.

The design maintains the original entry's footprint, to minimize interruption of the underground parkade, but does so with a single span, "rod-stayed" structure. The desired effect is a welcoming roof that appears simultaneously substantial and weightless, giving the impression of an open, "floating" raft that complements the existing towers.



## Jury's comments

- Stunning architecture.
- This project brought the building's entry forward to the sidewalk. The white colour of the new structure brings light into the dark void that was between the buildings.
- Forgotten space between two existing buildings is well-expressed and well-utilized in this project. Nicely executed street interface.
- The project addresses Edmonton's cold climate well. It is a solution reminiscent of various Scandinavian countries.
- Overall, a great public space has been created in Edmonton's downtown.





**Award of Merit** | Urban Architecture

Mill Creek Flex Homes

Project Designers: Battle Lake Design Group, Inc.  
Structural Engineer: Acius Engineering  
Project owner: The Warehouse Loft Company Ltd.

*Location: 8803 95 St NW*



## Project Description

The Mill Creek Flex Homes' project purpose was to develop sustainable residential infill within the inner city. This three-unit, 2-storey row housing fits into the City of Edmonton's vision of higher urban density in the "core," while complementing the existing neighbourhood's built form. The development's location and proximity to local amenities increases the desirability and livability of the project.

The building design creates open, functional public and private interior spaces on a small footprint. It is designed and constructed to showcase a contemporary, modern straw bale building in an urban setting. Collaborative design solutions using straw bale technology were developed for the challenges of the Alberta climate.

Cement-lime stucco and vertical cedar siding create a contemporary exterior that embraces traditional building materials and techniques. Organic, textured straw bale walls, exposed structural wood and concrete, as well as extensive window use, form the basis of a design that includes simple yet functional finishes and emphasizes locally-produced materials.

The project incorporates many "green" technologies and ideas, including passive and active solar systems, roof-top patios, and green roofs. Zero and low volatile organic compound (VOC) finishes, and a breathable exterior envelope, contribute to a healthier interior environment.

Mill Creek Flex Homes provides pleasing, meaningful and sustainable alternatives to single-family homes while enhancing the existing character of Edmonton's mature neighbourhoods.

## Jury's comments

- Very sensitive architecture and the most sustainable project submitted.
- A good example of sensitive infill in Edmonton's mature neighbourhoods.
- The project could have been even better had the applicant challenged the existing zoning and sited the building envelope closer to the public streets. Moving the buildings forward would create an active urban edge.
- We always encourage green roofs and are happy to see them included in this project.
- Notwithstanding that this project didn't meet the eligibility criteria of being designed by an architect, it is worthy of recognition in the "urban architecture" category. The project provides an alarming signal to architects.







**Award of Merit** | Urban Architecture

Ukrainian Canadian Archives & Museum of  
Alberta (UCAMA)

Architect: HIP Architects and David Murray Architect  
Project owner: Ukrainian Canadian Archives and Museum of Alberta

*Location: 9660-9664 Jasper Avenue*



This project involves the transformation of a historic hotel, the former Pendennis (later renamed the Lodge) Hotel, into a multi-faceted contemporary museum and archives.





## Project Description

The Pendennis/Lodge Hotel has been an Edmonton landmark for a century and is designated as a historical municipal resource. The building has undergone a number of alterations and renovations during its lifetime, all of which have contributed to the character and quality of the existing structure.

However, the existing building is not suited for its intended revitalization into the UCAMA facility and major renovations are required to transform the building and create a facility that will last UCAMA another 100 years.

The design centres on integrating three component parts (exhibition, library and archive) within the remnants of the retained structure. The design process differed from creating an entirely new museum as the physical constraints of the existing building and approach to revitalization have driven the design.

The facility design is organized around these spaces in an open plan arrangement where possible. The main floor design contains a temporary gallery, book/coffee shop and an area for deliveries and cleaning and cataloguing of acquisitions. The second floor contains the main exhibition spaces, the third floor the library and archive and the fourth floor offices, boardroom and activity room.

The open atrium design, which will include a two-storey foyer, will help visitors move through the Ukrainian Canadian Archives & Museum of Alberta with access to the various exhibit and display areas.

A roof garden, planned to overlook Jasper Avenue, the river valley, the Muttart Conservatory and Gallagher Park, will offer visitors a unique panoramic view.



## Jury's Comments

- The design is a modern and unique redevelopment of a historic property.
- The project maintains the fine grain and consistent rhythm of the existing street front, by creating a series of interconnected spaces behind an urban façade.
- The project is respectful of other adjacent spaces even though space is not at a premium in that area (yet).
- This project would have been awarded an Award of Excellence if it were finished.





*winter falls at length*  
through *darkness* and the snow  
*unable* to *go* on  
*unable* on the still  
*river* to *return*  
making *this* the last home  
all *elsewhere* now  
the *dream that* is to *come*  
*unable* to take *shape*

**8**  
Award Of Merit



Poetry Rings

**9**  
Award Of Merit



11805 - 94 Street Façade Improvement

**10**  
Award Of Merit



Myhre's Music Façade Improvement





## Award of Merit | Urban Fragments

### Poetry Rings

Landscape Architect: Carlyle and Associates  
in Collaboration with Ted Blodgett  
Artist: Ted Blodgett (E.D. Blodgett)  
Project owner: City of Edmonton

*Location: Louise McKinney Riverfront Park occupies a commanding central location within the river valley parks, south and east of the Shaw Conference Centre and adjacent to Edmonton's downtown.*









The poems are part of the overall interpretive plan for the park that will include both interpretive displays and art works at key locations over the park site.

The poems are based on two themes. Those along the World Walk are based on the theme of Edmonton's place in the World and titled "Dreams of a City" while those along the River Promenade are about the North Saskatchewan River and titled "Gifts of a River."

There are 40 poems in total, in six languages that represent Edmonton's founding communities.

The poems are meant to both stand on their own and to be read as a group. They add a level of detailed thought-provoking experience complementing the vast panoramic experiences along the walks.

### Jury's Comments

- The project is very subtle in its expression.
- The poetry rings can easily be picked out, but they do not interfere with the landscape.
- This is almost a civic design project; using a utilitarian object as civic art.
- The project doesn't mar your expectations. It's a very creative attempt to incorporate poetry into the landscape.







**Award of Merit** | Urban Fragments

11805 - 94 Street Façade  
Improvement

Architect: Shelterbelt Architecture  
Project owner: Bernard and Helina Boisvert

*Location: 11805 94 St.*





**Project Description**

This project transformed a former government office building that had damaged masonry stucco and an unkempt appearance into an eye-catching modern structure.

This structure created a unique condition where the west façade needed to be perceived as a roof. The building was unfortunately clad in masonry stucco that was damaged from intentional abuse and water infiltration.

Security bars made the storefront and access doors inhospitable. The previous tenant's business was cluttered with inventory and advertising signage.



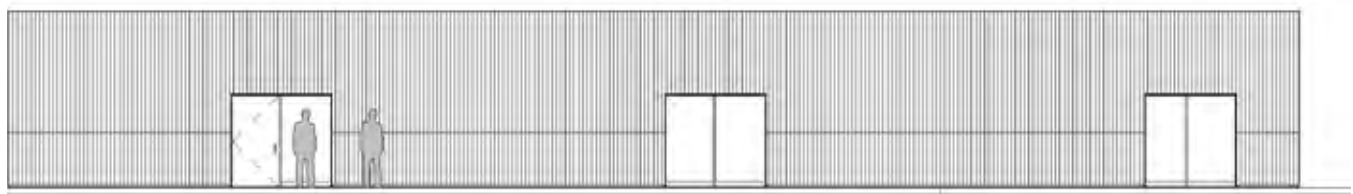
After an initial assessment, the scope of work increased beyond the facade improvement to include a building envelope improvement and new roofing, mechanical and electrical systems. The building was stripped to the structure and re-clad with membrane, rigid insulation and galvanized corrugated steel.

The front facade and deep entry recesses are finished with mosaic tile in a mix of greys and blacks. The cladding materials were selected with durability and respect for possible vandalism in mind. The materials' dynamic form and pattern also add movement and interest to the urban environment.

The north lane wall has been painted in anticipation of a future mural. New storefront glazing and lighting on 118th Avenue ensures a transparent frontage that contributes to the area's renewal and security.

**Jury's comments**

- Alberta Avenue is a tough neighbourhood and the project is a different/refreshing expression.
- It's a "cool-looking" building with a stronger, more cheerful presence on the street than what is currently in the neighbourhood.
- The understated context is very much appreciated.
- It's a reveal, not a creation. The form of the building makes it interesting no matter what is it inside of it.
- The project may be improved with the introduction of some selective landscaping.







**Award of Merit** | Urban Fragments

Myhre's Music Façade Improvement

Architect: Chris Idenouye, AAA, MRAIC  
Project owner: Myhre's Music

*Project location: 8735 – 118 Avenue*





## Project Description

Myhre's Music is a family-owned business that has been selling musical instruments since 1967. The owners wanted a façade that was more current and one that represented their business of selling musical instruments.

This project was initiated with funding from the City of Edmonton Facade Improvement program.

The old painted wood cladding was replaced with an acrylic stucco, changing the texture and colour of the façade. The front canopy shape was based on the imagery of a violin with the support rods evoking an image of strings. The long sign band was based on the imagery of the long neck of an instrument.

Lights were placed between the eyebrows for accent and to increase sidewalk lighting levels in an area of high vandalism.

The old steel security gate by the front door was replaced with a sidelight with multiple horizontal mullions to achieve the same security function without the use of the old steel grating. The old second floor windows were also replaced to change the appearance of the façade and improve thermal efficiency.



## Jury's Comments

- It is a modest project with a potent design that uses simple materials to carry out the concept.
- The project showcases very sensitive design skills than the other projects in the urban fragments category.
- It is light, friendly and beautiful.
- Adds to the urbanism of the area through the beauty of its façade.
- The façade design effectively expresses the craftsmanship needed to design a musical instrument.



## The Jury



**Douglas Cardinal**

Architect, Douglas Cardinal Architect Inc.  
Ottawa, Ontario

Douglas Cardinal is credited for creating an indigenous Canadian style of architecture. He is a recipient of the Order of Canada. He is probably best known for his design of the Canadian Museum of Civilization in Gatineau, Quebec. However, his career started here in the west. Douglas practiced architecture for 18 years in Edmonton, from the mid 60's to the mid 80's. He designed Edmonton's Space and Sciences Centre (now known as the Telus World of Science), St. Albert Place, Grande Prairie Regional College, St. Mary's Church in Red Deer and the Government Services Centre in Ponoka.



**Michael Hough**

Landscape Architect, Envision - The Hough Group  
Toronto, Ontario

Michael Hough is a distinguished landscape architect, scholar, teacher, author and community activist. He founded the School of Landscape Architecture at the University of Toronto, and has taught at the University of Manitoba, Harvard, Rhode Island and is currently an adjunct Professor at the Faculty of Environmental Studies at York University. He is the founder of the Toronto based office Envision -The Hough Group.



**Tim Jones**

President & CEO, Artscape  
Toronto, Ontario

Tim Jones is the President and CEO of Artscape in Toronto. Artscape has grown from a Toronto-based affordable studio provider to an internationally recognized leader in city-building through the arts. Tim is a champion for the role that the arts play in transforming cities and communities.



**Shannon Nichol**

Landscape Architect, Gustafson Guthrie Nichol Ltd.  
Seattle, Washington

Shannon Nichol is an accomplished landscape architect based in Seattle, Washington. Recent examples of Shannon's work may be found in such projects as the new Bill & Melinda Gates Foundation Campus, Boston's North End Parks and the McCaw Hall Opera House in Seattle. She is a founding partner of Gustafson Guthrie Nichol in Seattle.



**Brent Toderian**

Director of Planning, City of Vancouver  
Vancouver, British Columbia

Brent Toderian is Director of City Planning for the City of Vancouver. He is a passionate advocate for creative city building and is in the forefront in encouraging candid dialogue around sustainability, creativity, and architectural risk-taking. In Vancouver his mandate includes many projects related to the 2010 Winter Olympics and Vancouver's recently-approved "EcoDensity" city-wide initiative.





Christopher Dulaba  
AACIP

Nichol Howard  
AAA

Basel Abdullaal  
RAIC Alberta Chapter

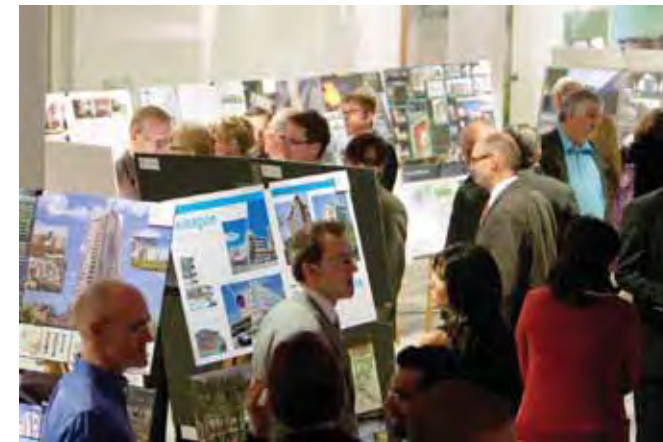
Katherine Kerr  
Edmonton Design Committee

Michael Evans  
AALA

Dnyanesh Deshpande  
City of Edmonton

Vivrel Pantelimon  
City of Edmonton





## The 2009 EUDA Awards Ceremony

November 18, 2009 at Edmonton City Hall

The 2009 Edmonton Urban Design Awards gala was a success for the winners and for everyone who attended; it was a moment for conveying prospects and ideas on how to enhance the quality of life in Edmonton through innovative and creative architecture and urban design.

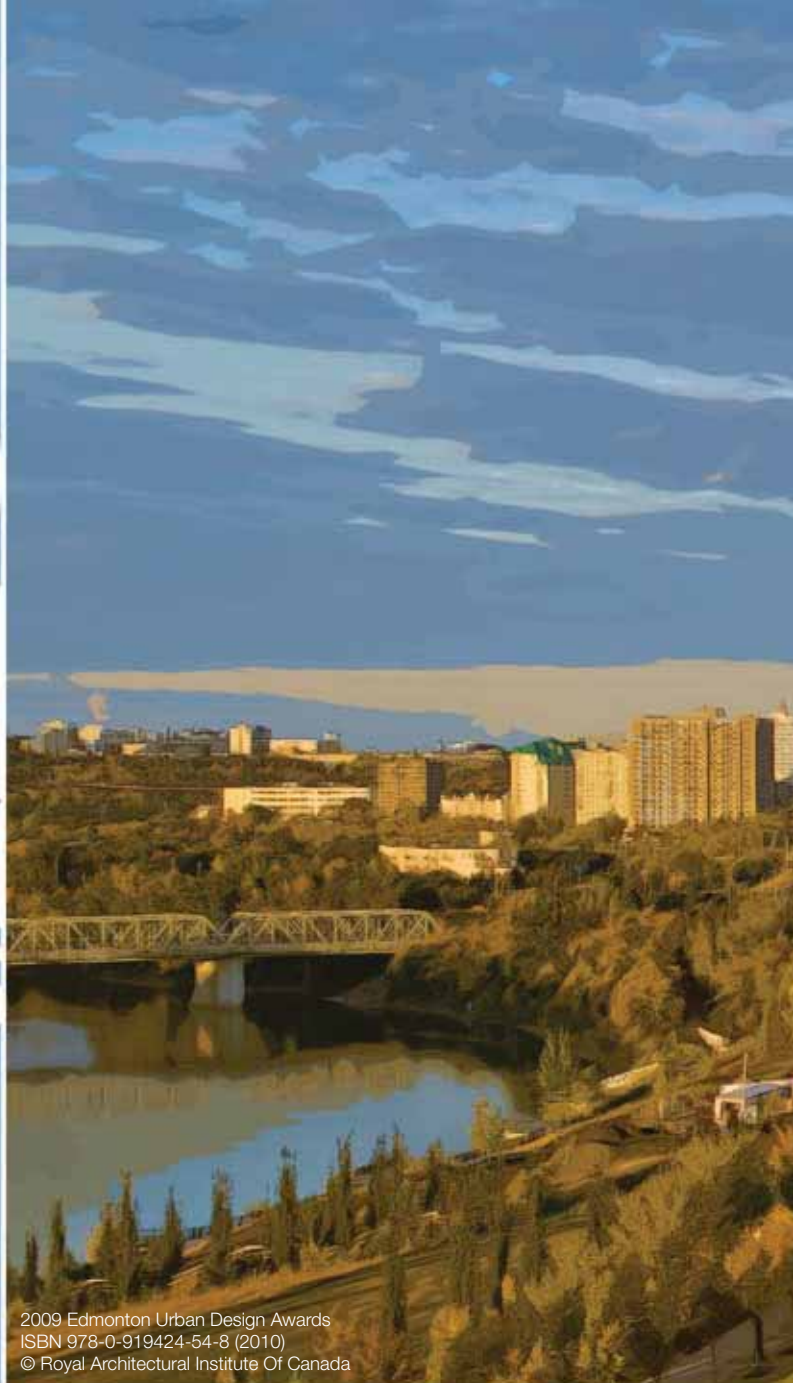




**beauty** from summer *falls*  
*unnoticed* through **ravines**  
that *from* the river reach  
**deeper** through the *earth*  
where *silence* unadorned  
rises in our **hands**

# 2009 EDMONTON URBAN DESIGN AWARDS

the **leaves** that now fall here  
have **fallen** here before  
**anyone** knew that leaves  
in such **infinities** fall  
and how the **heavens** exhale  
their *long* sighs of **stars**



2009 Edmonton Urban Design Awards  
ISBN 978-0-919424-54-8 (2010)  
© Royal Architectural Institute Of Canada

